

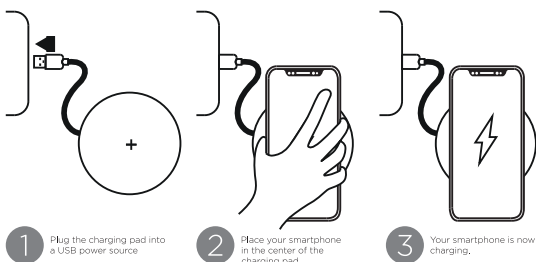
WIRELESS FAST CHARGER



Specification Parameter

Product model: CS5137	Implementation standards: QI
Standard input: DC5V-2A	Fast charge input: DC9V-1.67A
Standard output: 7.5W Max	Fast charge output: 10W Max
Product Size : 93mmX5.8mm	Working Frequency : 110-205KHz

Charger Sketch Map



1. Plug the power adapter into the socket
 2. One end of the USB power line is connected with an adapter, and one end is connected with a wireless charger
- *When power LED lights flash once extinguished, standby off, normal charging when LED lights lit

Be careful Matter



1. Do not crush or collide
2. Do not disassemble or put into the fire, water, to avoid short circuit leakage
3. Do not use wireless charger in severe high temperature, humidity or corrosive environment to avoid damage leakage phenomenon occurs in the circuit
4. Do not place too closely with magnetic cards or magnetic cards with chips (such as ID cards, bank cards, etc.) avoid the invalidation of magnetic card
5. Please keep the distance between implantable medical devices (pacemakers, cochlear implants, etc.) and wireless chargers at least 20cm to avoid potential interference to medical devices
6. Please take care of the children to make sure they don't play with the wireless charger as a toy, so as to avoid unnecessary accidents
7. Keep the charger and receiver away from water and other liquids
8. If you need to clean the charger, make sure to disconnect the power supply
9. Use ambient temperature at 0-45 °C

Applicable Equipment

1. Support fast wireless charging equipment (iPhone 8/8 Plus/iPhone X, Samsung Galaxy S8, Samsung Galaxy S8 Plus/S8+, Samsung Galaxy S7, Samsung Galaxy S7 Edge, Samsung Galaxy Note5, Samsung Galaxy S6 Edge Plus)
 2. Support standard wireless charging equipment (Samsung Galaxy S6, Samsung Galaxy S6 Edge, Samsung Galaxy Note4, LG Nexus 5, etc.)
 3. Equipment requiring additional wireless receiver: (Samsung Galaxy S5/S4/S3, Samsung Galaxy Note4, etc.)
- (Note: these receivers must be compatible with WPC QI standards)
- * Included: Wireless charger. Charging line. Instructions

Shenzhen Pingwang Technology Co., Ltd.
Address : 3G056, Hualijia Electronic Market, Pinghu,
Long gang district, Shenzhen
Designed by COTEEtCI in Shenzhen.
©2018 COTEEtCI • ALL RIGHT RESERVED • MADE IN CHINA

NOTE: This equipment has been tested and found to comply with the limits for a Class B digital device, pursuant to part 15 of the FCC Rules. These limits are designed to provide reasonable protection against harmful interference in a residential installation. This equipment generates uses and can radiate radio frequency energy and, if not installed and used in accordance with the instructions, may cause harmful interference to radio communications. However, there is no guarantee that interference will not occur in a particular installation. If this equipment does cause harmful interference to radio or television reception, which can be determined by turning the equipment off and on, the user is encouraged to try to correct the interference by one or more of the following measures:

- Reorient or relocate the receiving antenna.
- Increase the separation between the equipment and receiver.
- Connect the equipment into an outlet on a circuit different from that to which the receiver is connected.
- Consult the dealer or an experienced radio/TV technician for help

Changes or modifications not expressly approved by the party responsible for compliance could void the user's authority to operate the equipment.

This device complies with Part 15 of the FCC Rules. Operation is subject to the following two conditions:

- (1) this device may not cause harmful interference, and
- (2) this device must accept any interference received, including interference that may cause undesired operation.