



FCC SAR Measurement and Test Report

For

Hunan Greatwall Computer System CO., LTD

Hunan GreatWall Industrial Park, Tianyi Science and Technology

City, Xiangyun Middle Road, Tianyuan District, Zhuzhou, Hunan

Test Standards:	FCC Part 2.1093, ANSI / IEEE C95.1 :2005+A1:2010 <u>ANSI / IEEE C95.3 :2002(R2008)</u>
Product Description:	<u>10.1"Android Tablet</u>
Tested Model:	<u>100011886</u>
Report No.:	<u>WTD20X04022499W</u>
Sample Received Date:	<u>2020-04-29</u>
Tested Date:	<u>2020-04-29 to 2020-05-06</u>
Issued Date:	<u>2020-05-07</u>
Tested By:	<u>Jack Sun / Engineer</u>
Reviewed By:	<u>Lion Cai / RF Manager</u>
Approved & Authorized By:	<u>Silin Chen / Manager</u>
Prepared By:	

Jack Sun
Lion Cai
Silin Chen



Waltek Testing Group (Shenzhen) Co., Ltd.
1/F., Room 101, Building 1, Hongwei Industrial Park, Liuxian 2nd Road,
Block 70 Bao'an District, Shenzhen, Guangdong, China
Tel.: +86-755-33663308 Fax.: +86-755-33663309 Website: www.semtest.com.cn

Note: This test report is limited to the above client company and the product model only. It may not be duplicated without prior permitted by Waltek Testing Group (Shenzhen) Co., Ltd.



TABLE OF CONTENTS

1. General Information3
 1.1 Product Description for Equipment Under Test (EUT)3
 1.2 Test Standards5
 1.3 Test Methodology5
 1.4 Test Facility5

2. Summary of Test Results6

3. Specific Absorption Rate (SAR).....7
 3.1 Introduction.....7
 3.2 SAR Definition7

4. SAR Measurement System8
 4.1 The Measurement System8
 4.2 Probe8
 4.3 Probe Calibration Process10
 4.4 Phantom11
 4.5 Device Holder11
 4.6 Test Equipment List12

5. Tissue Simulating Liquids13
 5.1 Composition of Tissue Simulating Liquid13
 5.2 Tissue Dielectric Parameters for Head and Body Phantoms14
 5.3 Tissue Calibration Result15

6. SAR Measurement Evaluation16
 6.1 Purpose of System Performance Check16
 6.2 System Setup16
 6.3 Validation Results17

7. EUT Testing Position18
 7.1 EUT Antenna Position18

8. SAR Measurement Procedures20
 8.1 Measurement Procedures20
 8.2 Spatial Peak SAR Evaluation20
 8.3 Area & Zoom Scan Procedures21
 8.4 Volume Scan Procedures21
 8.5 SAR Averaged Methods21
 8.6 Power Drift Monitoring21

9. SAR Test Result22
 9.1 Conducted RF Output Power22
 9.2 Test Results for Standalone SAR Test26
 9.3 Simultaneous Multi-band Transmission SAR Analysis28
 10.1 Uncertainty for EUT SAR Test30
 10.2 Uncertainty for System Performance Check31

Annex A. Plots of System Performance Check33

Annex B. Plots of SAR Measurement43

Annex C. EUT Photos60

Annex D. Test Setup Photos69

Annex E. Calibration Certificate71

1. General Information

1.1 Product Description for Equipment Under Test (EUT)

Client Information

Applicant: Hunan Greatwall Computer System CO., LTD
Address of applicant: Hunan GreatWall Industrial Park, Tianyi Science and Technology City, Xiangyun Middle Road, Tianyuan District, Zhuzhou, Hunan

Manufacturer: Hunan Greatwall Computer System CO., LTD
Address of manufacturer: Hunan GreatWall Industrial Park, Tianyi Science and Technology City, Xiangyun Middle Road, Tianyuan District, Zhuzhou, Hunan

General Description of EUT:	
Product Name:	10.1"Android Tablet
Trade Name:	onn.
Model No.:	100011886
Adding Model:	/
Rated Voltage:	Battery DC 3.8V
Battery capacity:	5000mAh
Software Version:	F732U2.0
Hardware Version:	F732.Q0.V2.3.1.RC-V01_100011886
<i>Note: The test data is gathered from a production sample, provided by the manufacturer.</i>	

Technical Characteristics of EUT:	
WiFi(2.4G)	
Support Standards:	802.11b, 802.11g, 802.11n-HT20/ HT40
Frequency Range:	2412-2462MHz for 802.11b/g/n(HT20), 2422-2452MHz for 802.11n(HT40)
RF Output Power:	19.55dBm (EIRP)
Type of Modulation:	DBPSK,BPSK,DQPSK,QPSK,16QAM,64QAM
Data Rate:	1-11Mbps, 6-54Mbps, up to 150Mbps
Quantity of Channels:	11 for 802.11b/g/n-HT20, 7 for 802.11n-HT40
Channel Separation:	5MHz
Antenna Type:	Integral Antenna
Antenna Gain:	2.2dBi;
Bluetooth	
Bluetooth Version:	V5.0
Frequency Range:	2402-2480MHz
RF Output Power:	3.58dBm (EIRP)
Data Rate:	1Mbps, 2Mbps, 3Mbps
Modulation:	GFSK, Pi/4 QDPSK, 8DPSK
Quantity of Channels:	79/40
Channel Separation:	1MHz/2MHz
Antenna Type:	Integral Antenna
Antenna Gain:	2.2dBi;
Wi-Fi(5GHz)	
Support Standards:	802.11a, 802.11n-HT20/40, 802.11ac-HT20/40/80
Frequency Range:	Band 1: 5180-5240MHz,Band 2: 5260-5320MHz, Band 3: 5500-5700MHz,Band 4: 5745-5825MHz
RF Output Power:	14.90dBm (EIRP)
Type of Modulation:	BPSK,QPSK, 16QAM, 64QAM, 256-QAM
Type of Antenna:	Integral Antenna
Antenna Gain:	2.2dBi;

1.2 Test Standards

The following report is prepared on behalf of the Hunan Greatwall Computer System CO., LTD in accordance with FCC 47 CFR Part 2.1093, ANSI/IEEE C95.1-2005+A1:2010, ANSI / IEEE C95.3 :2002(R2008), IEEE 1528-2013, and KDB 865664 D01 v01r04 and KDB 865664 D02 v01r02 and KDB 616217 D04 v01r02 and 248227 D01 802 11 Wi-Fi SAR v02r02.

The objective is to determine compliance with FCC Part 2.1093 of the Federal Communication Commissions rules.

Maintenance of compliance is the responsibility of the manufacturer. Any modification of the product, which result in lowering the emission, should be checked to ensure compliance has been maintained.

1.3 Test Methodology

All measurements contained in this report were conducted with KDB 865664 D01 v01r04 and KDB 865664 D02 v01r02. The public notice KDB 447498 D01 v06 for Mobile and Portable Devices RF Exposure Procedure also.

1.4 Test Facility

Address of the test laboratory

Laboratory: Waltek Testing Group (Shenzhen) Co., Ltd.

Address: 1/F., Room 101, Building 1, Hongwei Industrial Park, Liuxian 2nd Road, Block 70 Bao'an District, Shenzhen, Guangdong, China

FCC – Registration No.: 125990

Waltek Testing Group (Shenzhen) Co., Ltd. EMC Laboratory has been registered and fully described in a report filed with the FCC (Federal Communications Commission). The acceptance letter from the FCC is maintained in our files. The Designation Number is CN5010. Test Firm Registration Number is 125990.

Industry Canada (IC) Registration No.: 11464A

The 3m Semi-anechoic chamber of Waltek Testing Group (Shenzhen) Co., Ltd. has been registered by Certification and Engineering Bureau of Industry Canada for radio equipment testing with Registration No.: 11464A.



2. Summary of Test Results

The maximum results of Specific Absorption Rate (SAR) have found during testing are as follows:

Frequency Band	Body (0mm Gap)	SAR _{1g} Limit (W/kg)
	Maximum SAR _{1g} (W/kg)	
WLAN 2.4GHz	1.386	1.6
WLAN 5.2GHz	0.545	1.6
WLAN 5.3GHz	1.253	1.6
WLAN 5.6GHz	0.407	1.6
WLAN 5.8GHz	0.360	1.6
Simultaneous Transmission	1.491	1.6

Remark:

*The highest reported SAR values for body and simultaneous transmission conditions are **1.386W/kg** and **1.491W/kg** respectively.*

The device is in compliance with Specific Absorption Rate (SAR) for general population/uncontrolled exposure limits (1.6 W/kg) specified in FCC 47 CFR Part 2.1093 and ANSI/IEEE C95.1-2005+A1:2010, and had been tested in accordance with the measurement methods and procedure specified in KDB 865664 D01 v01r04, KDB 865664 D02 v01r02 and IEC 62209-2:2010.

3. Specific Absorption Rate (SAR)

3.1 Introduction

SAR is related to the rate at which energy is absorbed per unit mass in an object exposed to a radio field. The SAR distribution in a biological body is complicated and is usually carried out by experimental techniques or numerical modeling. The standard recommends limits for two tiers of groups, occupational/controlled and general population/uncontrolled, based on a person's awareness and ability to exercise control over his or her exposure. In general, occupational/controlled exposure limits are higher than the limits for general population/uncontrolled.

3.2 SAR Definition

The SAR definition is the time derivative (rate) of the incremental energy (dW) absorbed by (dissipated in) an incremental mass (dm) contained in a volume element (dv) of a given density (ρ). The equation description is as below:

$$\text{SAR} = \frac{d}{dt} \left(\frac{dW}{dm} \right) = \frac{d}{dt} \left(\frac{dW}{\rho dv} \right)$$

SAR is expressed in units of Watts per kilogram (W/kg)

SAR measurement can be either related to the temperature elevation in tissue by

$$\text{SAR} = C \left(\frac{\delta T}{\delta t} \right)$$

Where: C is the specific heat capacity, δT is the temperature rise and δt is the exposure duration, or related to the electrical field in the tissue by

$$\text{SAR} = \frac{\sigma |E|^2}{\rho}$$

Where: σ is the conductivity of the tissue, ρ is the mass density of the tissue and E is the RMS electrical field strength.

However for evaluating SAR of low power transmitter, electrical field measurement is typically applied.

4. SAR Measurement System

4.1 The Measurement System

Comosar is a system that is able to determine the SAR distribution inside a phantom of human being according to different standards. The Comosar system consists of the following items:

- Main computer to control all the system
- 6 axis robot
- Data acquisition system
- Miniature E-field probe
- Phone holder
- Head simulating tissue

The following figure shows the system.



The EUT under test operating at the maximum power level is placed in the phone holder, under the phantom, which is filled with head simulating liquid. The E-Field probe measures the electric field inside the phantom. The OpenSAR software computes the results to give a SAR value in a 1g or 10g mass.

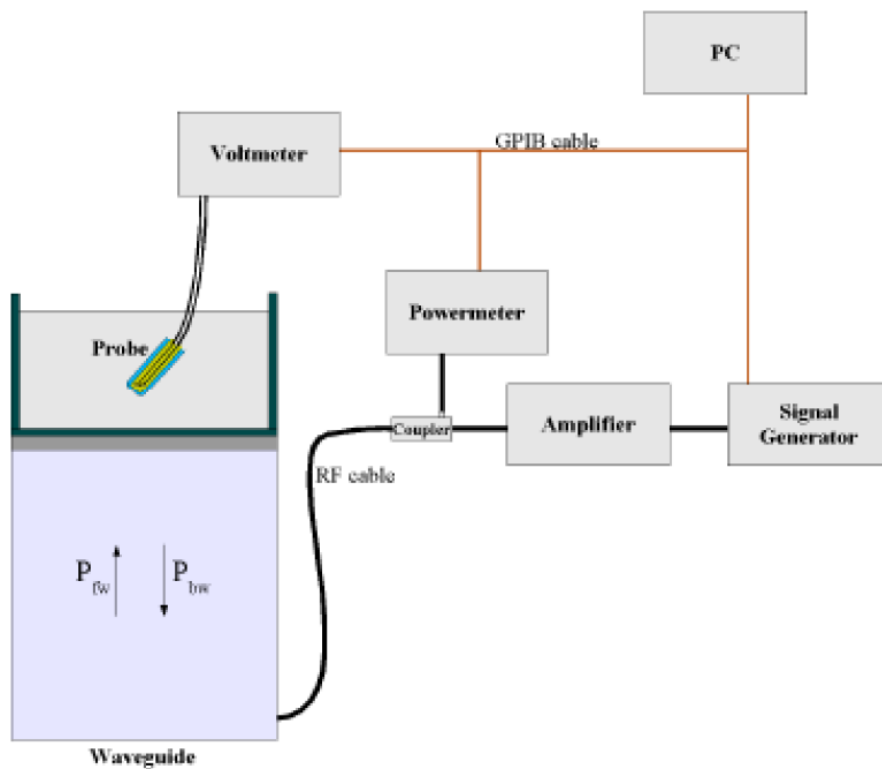
4.2 Probe

For the measurements the Specific Dosimetric E-Field Probe SSE2 SN 45/15 EPGO280 with following specifications is used

- Dynamic range: 0.01-100 W/kg
- Probe Length: 330 mm
- Length of Individual Dipoles: 4.5 mm
- Maximum external diameter: 8 mm
- Probe Tip External Diameter : 5 mm
- Distance between dipoles / probe extremity: 2.7mm

- Probe linearity: <0.25 dB
 - Axial Isotropy: <0.25 dB
 - Spherical Isotropy: <0.50 dB
 - Calibration range: 700 to 3000MHz for head & body simulating liquid.
- Angle between probe axis (evaluation axis) and surface normal line: less than 30°

Probe calibration is realized, in compliance with EN 62209-1 and IEEE 1528 STD, with CALISAR, Antenna proprietary calibration system. The calibration is performed with the EN 62209-1 annexe technique using reference guide at the five frequencies.



$$SAR = \frac{4(P_{fw} - P_{bw})}{ab\delta} \cos^2\left(\pi \frac{y}{a}\right) e^{-2z/\delta}$$

Where :

P_{fw} = Forward Power

P_{bw} = Backward Power

a and b = Waveguide dimensions

l = Skin depth

Keithley configuration:

Rate = Medium; Filter = ON; RDGS = 10; Filter type = Moving Average; Range auto after each calibration, a SAR measurement is performed on a validation dipole and compared with a NPL calibrated probe, to verify it.

The calibration factors, CF(N), for the 3 sensors corresponding to dipole 1, dipole 2 and dipole 3 are:

$$CF(N)=SAR(N)/V_{lin}(N) \quad (N=1,2,3)$$

The linearised output voltage $V_{lin}(N)$ is obtained from the displayed output voltage $V(N)$ using

$$V_{lin}(N)=V(N)*(1+V(N)/DCP(N)) \quad (N=1,2,3)$$

where DCP is the diode compression point in mV.

4.3 Probe Calibration Process

Dosimetric Assessment Procedure

Each E-Probe/Probe Amplifier combination has unique calibration parameters. SATIMO Probe calibration procedure is conducted to determine the proper amplifier settings to enter in the probe parameters. The amplifier settings are determined for a given frequency by subjecting the probe to a known E-field density (1 mW/cm²) using an with CALISAR, Antenna proprietary calibration system.

Free Space Assessment Procedure

The free space E-field from amplified probe outputs is determined in a test chamber. This calibration can be performed in a TEM cell if the frequency is below 1 GHz and in a waveguide or other methodologies above 1 GHz for free space. For the free space calibration, the probe is placed in the volumetric center of the cavity and at the proper orientation with the field. The probe is rotated 360 degrees until the three channels show the maximum reading. The power density readings equates to 1mW/cm².

Temperature Assessment Procedure

E-field temperature correlation calibration is performed in a flat phantom filled with the appropriate simulated head tissue. The E-field in the medium correlates with the temperature rise in the dielectric medium. For temperature correlation calibration a RF transparent thermistor-based temperature probe is used in conjunction with the E-field probe.

Where:

$$SAR = C \frac{\Delta T}{\Delta t}$$

Δt = exposure time (30 seconds),

C = heat capacity of tissue (brain or muscle),

ΔT = temperature increase due to RF exposure.

SAR is proportional to $\Delta T/\Delta t$, the initial rate of tissue heating, before thermal diffusion takes place. The electric field in the simulated tissue can be used to estimate SAR by equating the thermally derived SAR to that with the E- field component.

$$SAR = \frac{|E|^2 \cdot \sigma}{\rho}$$

Where:

σ = simulated tissue conductivity,

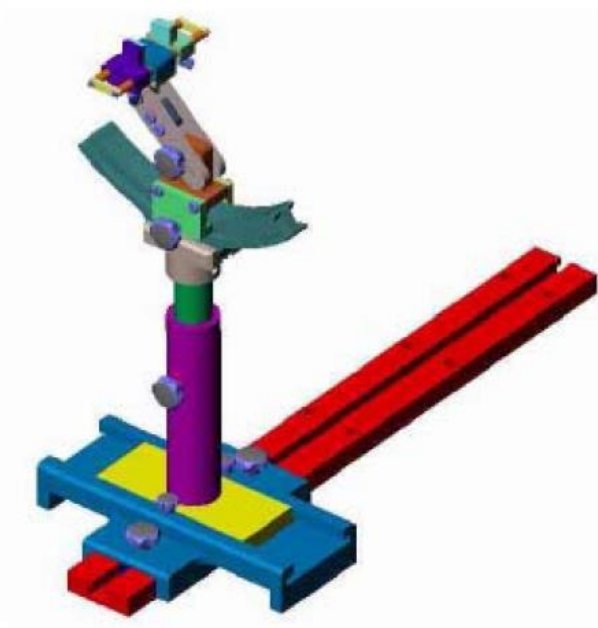
ρ = Tissue density (1.25 g/cm³ for brain tissue)

4.4 Phantom

For the measurements the Specific Anthropomorphic Mannequin (SAM) defined by the IEEE SCC-34/SC2 group is used. The phantom is a polyurethane shell integrated in a wooden table. The thickness of the phantom amounts to 2mm +/- 0.2mm. It enables the dosimetric evaluation of left and right phone usage and includes an additional flat phantom part for the simplified performance check. The phantom set-up includes a cover, which prevents the evaporation of the liquid.

4.5 Device Holder

The positioning system allows obtaining cheek and tilting position with a very good accuracy. In compliance with CENELEC, the tilt angle uncertainty is lower than 1 °.



System Material	Permittivity	Loss Tangent
Delrin	3.7	0.005



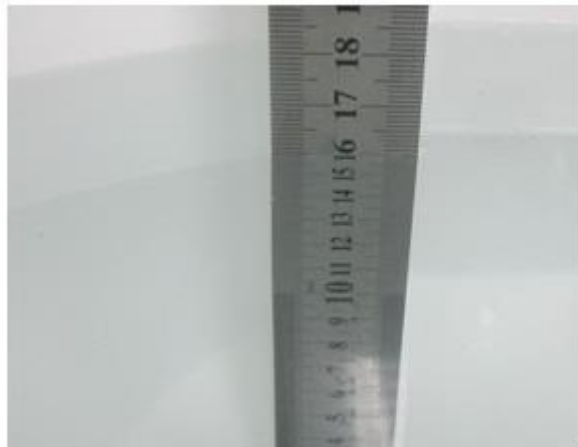
4.6 Test Equipment List

Description	Manufacturer	Model	Serial Number	Cal. Date	Due. Date
E-Field Probe	MVG	SSE2	SN 45/15 EPGO280	2019-07-08	2020-07-07
2450MHz Dipole	MVG	SID2450	SN 13/15 DIP 2G450-364	2020-03-11	2021-03-10
5 GHz Waveguide	MVG	SWG5500	SN 49/16 WGA45	2019-07-15	2020-07-14
Dielectric Probe Kit	SATIMO	SCLMP	SN 47/12 OCPG49	2020-03-11	2021-03-10
SAM Phantom	SATIMO	SAM	SN/ 47/12 SAM95	N/A	N/A
MULTIMETER	KEITHLEY	Keithley 2000	4006367	2020-04-28	2021-04-27
Power meter	Keithley	3500	JC-2017-09-001	2020-04-28	2021-04-27
Power meter	Keithley	3500	JC-2017-09-001	2020-04-28	2021-04-27
Power Sensor	Agilent	11636B	JC-2017-10-002	2020-04-28	2021-04-27
Signal Generator	Rohde & Schwarz	SMR20	100047	2020-04-28	2021-04-27
Spectrum Analyzer	Agilent	E4407B	MY41440400	2020-04-28	2021-04-27
Universal Tester	Rohde & Schwarz	CMU200	112012	2020-04-28	2021-04-27
Network Analyzer	HP	8753C	SEMT-1064	2020-04-28	2021-04-27
Directional Couplers	Agilent	778D	20160	2020-04-28	2021-04-27

5. Tissue Simulating Liquids

5.1 Composition of Tissue Simulating Liquid

For the measurement of the field distribution inside the SAM phantom with SMTIMO, the phantom must be filled with around 25 liters of homogeneous body tissue simulating liquid. For head SAR testing, the liquid height from the ear reference point (ERP) of the phantom to the liquid top surface is larger than 15 cm. For body SAR testing, the liquid height from the center of the flat phantom to the liquid top surface is larger than 15 cm. Please see the following photos for the liquid height.



Liquid Height for Body SAR

The Composition of Tissue Simulating Liquid

Frequency (MHz)	Water (%)	Salt (%)	Sugar (%)	HEC (%)	Preventol (%)	DGBE (%)
Body						
2450	68.6	0.1	0	0	0	31.3

Frequency (MHz)	Water (%)	Hexyl Carbitol (%)	Triton X-100 (%)
Body			
5200-5800	78.6	10.7	10.7



5.2 Tissue Dielectric Parameters for Head and Body Phantoms

The IEEE Std. 1528, FCC KDBs and CEI/IEC 62209 standards state that the system validation measurements must be performed using a reference dipole meeting the fore mentioned return loss and mechanical dimension requirements. The validation measurement must be performed against a liquid filled flat phantom, with the phantom constructed as outlined in the fore mentioned standards. Per the standards, the dipole shall be positioned below the bottom of the phantom, with the dipole length centered and parallel to the longest dimension of the flat phantom, with the top surface of the dipole at the described distance from the bottom surface of the phantom.

Target Frequency (MHz)	Head		Body	
	Conductivity (σ)	Permittivity (ϵ_r)	Conductivity (σ)	Permittivity (ϵ_r)
150	0.76	52.3	0.80	61.9
300	0.87	45.3	0.92	58.2
450	0.87	43.5	0.94	56.7
750	0.89	41.9	0.96	55.5
835	0.90	41.5	0.97	55.2
900	0.97	41.5	1.05	55.0
915	0.98	41.5	1.06	55.0
1450	1.20	40.5	1.30	54.0
1610	1.29	40.3	1.40	53.8
1800-2000	1.40	40.0	1.52	53.3
2450	1.80	39.2	1.95	52.7
3000	2.40	38.5	2.73	52.0
5200	4.66	36.0	5.30	49.0
5300	35.9	4.76	5.42	48.9
5600	5.07	35.5	5.77	48.5
5800	5.27	35.3	6.00	48.2



5.3 Tissue Calibration Result

The dielectric parameters of the liquids were verified prior to the SAR evaluation using COMOSAR Dielectric Probe Kit and an Agilent Network Analyzer.

Calibration Result for Dielectric Parameters of Tissue Simulating Liquid

Body Tissue Simulating Liquid									
Freq. MHz.	Temp. (°C)	Conductivity			Permittivity			Limit (%)	Date
		Reading (σ)	Target (σ)	Delta (%)	Reading (ϵ_r)	Target (ϵ_r)	Delta (%)		
2450	21.3	1.91	1.95	-2.05	52.01	52.70	-1.31	±5	2020-04-30
5200	21.3	5.16	5.30	-2.64	48.50	49.0	-1.02	±5	2020-05-06
5400	21.3	5.26	5.42	-2.95	48.50	48.9	-0.82	±5	2020-05-06
5600	21.3	5.52	5.77	-4.33	48.30	48.5	-0.41	±5	2020-05-08
5800	21.3	5.76	6.00	-4.00	48.50	48.2	0.62	±5	2020-05-08

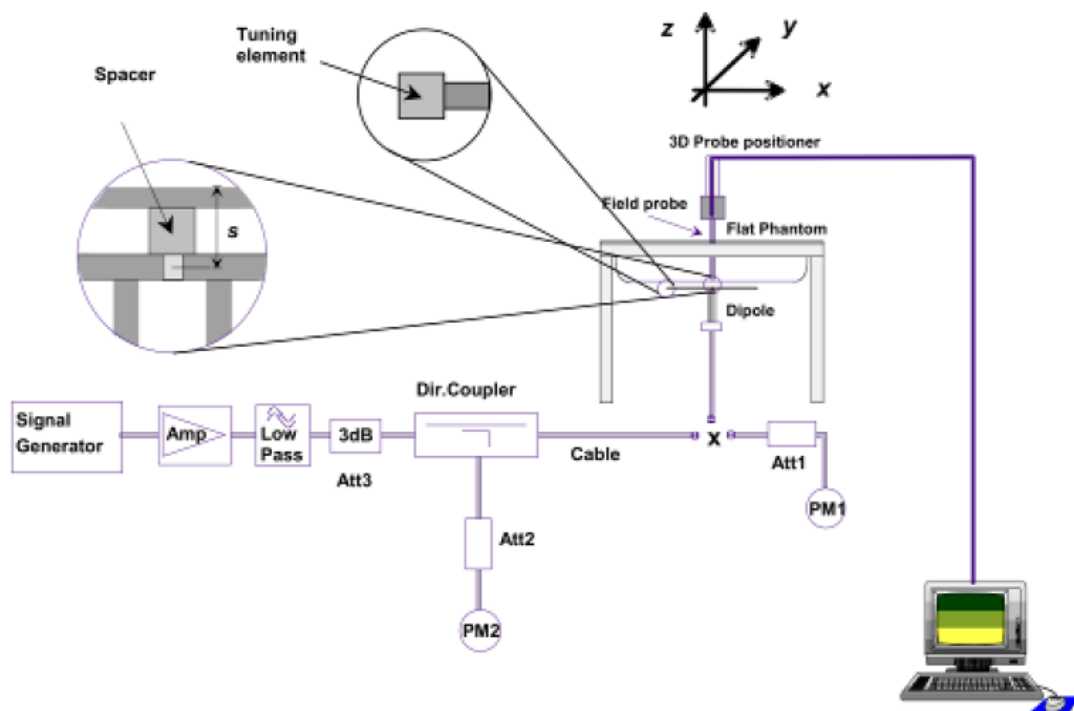
6. SAR Measurement Evaluation

6.1 Purpose of System Performance Check

The system performance check verifies that the system operates within its specifications. System and operator errors can be detected and corrected. It is recommended that the system performance check be performed prior to any usage of the system in order to guarantee reproducible results. The system performance check uses normal SAR measurements in a simplified setup with a well characterized source. This setup was selected to give a high sensitivity to all parameters that might fail or vary over time. The system check does not intend to replace the calibration of the components, but indicates situations where the system uncertainty is exceeded due to drift or failure.

6.2 System Setup

In the simplified setup for system evaluation, the EUT is replaced by a calibrated dipole and the power source is replaced by a continuous wave which comes from a signal generator at frequency 2450MHz and 5000MHz. The calibrated dipole must be placed beneath the flat phantom section of the SAM twin phantom with the correct distance holder. The distance holder should touch the phantom surface with a light pressure at the reference marking and be oriented parallel to the long side of the phantom.



System Verification Setup Block Diagram



Setup Photo of Dipole Antenna

The output power on dipole port must be calibrated to 24 dBm(250 mW) before dipole is connected.
The output power on 5 GHz Waveguide must be calibrated to 20 dBm (100mW) before 5 GHz Waveguide is connected.

6.3 Validation Results

Comparing to the original SAR value provided by SATIMO, the validation data should be within its specification of 10 %. Table 6.1 shows the target SAR and measured SAR after normalized to 1W input power. The table below indicates the system performance check can meet the variation criterion.

Frequency MHz	Targeted SAR _{1g} (W/kg)	Measured SAR _{1g} (W/kg)	Normalized SAR _{1g} (W/kg)	Tolerance (%)
Body				
2450	50.41	12.59	50.36	-0.10
5200	154.45	16.681	166.81	8.00
5800	170.71	16.681	166.81	-2.28

Targeted and Measurement SAR

Please refer to Annex A for the plots of system performance check.

7. EUT Testing Position

7.1 EUT Antenna Position

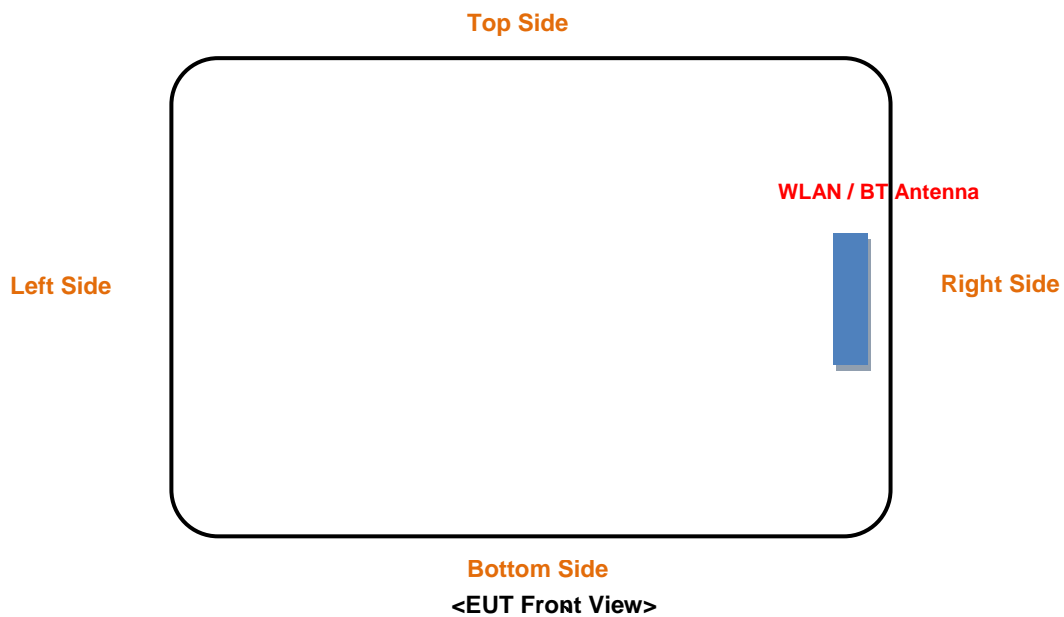


Fig 7.1 Block Diagram for EUT Antenna Position

Distance of EUT antenna-to-edge/surface(mm), Test distance:0mm						
Antennas	Back side	Front side	Left Edge	Right Edge	Top Edge	Bottom Edge
WLAN(2.4G)	<25	<25	225	<25	60	60
WLAN(5G)	<25	<25	225	<25	60	60

Exclusion Distance Calculation				
Frequency Bands	Service	Maximum Tune-up Power	Average Power	Exclusion Distance
WLAN(2.4G)	802.11b	19.0dBm	19.0dBm	45mm
WLAN(2.4G)	802.11n(40MHz)	20.0dBm	20.0dBm	60mm
WLAN(5.3G)	802.11a	15.0dBm	15.0dBm	40mm
WLAN(5.6G)	802.11a	13.5dBm	13.5dBm	20mm
WLAN(5.8G)	802.11a	12.0dBm	12.0dBm	15mm

Note: Refer to Chapter 9.1 Conducted RF Output Power



Remark:

1. Referring to KDB 447498 D01v06, the distance of the antennas to all adjacent edges SAR test exclusion for adjacent edges.
2. For tablet with overall diagonal dimension >20cm, SAR testing for front surface of the display section is exempted according to KDB616217 D04.

Body mode SAR assessments are required for this device. This EUT was tested in different positions for different SAR test modes, more information as below:

Body SAR tests, Test distance: 0mm						
Antennas	Front	Back	Right Side	Left Side	Top Side	Bottom
WLAN(2.4G)	No	Yes	Yes	No	No	No
WLAN(5.3G)	No	Yes	Yes	No	No	No
WLAN(5.6G)	No	Yes	Yes	No	No	No
WLAN(5.8G)	No	Yes	Yes	No	No	No

Remark:

1. Referring to KDB 616217 D04 v01r02, KDB 248227 D01 v02r02 and KDB 447498 D01 v06, this device is overall diagonal dimension(>20cm) tablet, tested in direct contact (no gap) with flat phantom.
2. Referring to KDB 616217 D04 v01r02, Exposures from antennas through the front (top) surface of the display section of a full-size tablet, away from the edges, are generally limited to the user's hands. Exposures to hands for typical consumer transmitters used in tablets are not expected to exceed the extremity SAR limit; therefore, SAR evaluation for the front surface of tablet display screens are generally not necessary.

Please refer to Annex D for the EUT test setup photos.

8. SAR Measurement Procedures

8.1 Measurement Procedures

The measurement procedures are as follows:

- (a) Use base station simulator (if applicable) or engineering software to transmit RF power continuously (continuous Tx) in the highest power channel.
- (b) Keep EUT to radiate maximum output power or 100% factor (if applicable)
- (c) Measure output power through RF cable and power meter.
- (d) Place the EUT in the positions as Annex D demonstrates.
- (e) Set scan area, grid size and other setting on the SATIMO software.
- (f) Measure SAR results for the highest power channel on each testing position.
- (g) Find out the largest SAR result on these testing positions of each band
- (h) Measure SAR results for other channels in worst SAR testing position if the SAR of highest power channel is larger than 0.8 W/kg

According to the test standard, the recommended procedure for assessing the peak spatial-average SAR value consists of the following steps:

- (a) Power reference measurement
- (b) Area scan
- (c) Zoom scan
- (d) Power drift measurement

8.2 Spatial Peak SAR Evaluation

The procedure for spatial peak SAR evaluation has been implemented according to the test standard. It can be conducted for 1g and 10g, as well as for user-specific masses. The SATIMO software includes all numerical procedures necessary to evaluate the spatial peak SAR value.

The base for the evaluation is a "cube" measurement. The measured volume must include the 1g and 10g cubes with the highest averaged SAR values. For that purpose, the center of the measured volume is aligned to the interpolated peak SAR value of a previously performed area scan.

The entire evaluation of the spatial peak values is performed within the post-processing engine. The system always gives the maximum values for the 1g and 10g cubes. The algorithm to find the cube with highest averaged SAR is divided into the following stages:

- (a) Extraction of the measured data (grid and values) from the Zoom Scan
- (b) Calculation of the SAR value at every measurement point based on all stored data
- (c) Generation of a high-resolution mesh within the measured volume
- (d) Interpolation of all measured values from the measurement grid to the high-resolution grid
- (e) Extrapolation of the entire 3D field distribution to the phantom surface over the distance from sensor to surface
- (f) Calculation of the averaged SAR within masses of 1g and 10g

8.3 Area & Zoom Scan Procedures

First Area Scan is used to locate the approximate location(s) of the local peak SAR value(s). The measurement grid within an Area Scan is defined by the grid extent, grid step size and grid offset. Next, in order to determine the EM field distribution in a three-dimensional spatial extension, Zoom Scan is required. The Zoom Scan measures 5x5x7 points with step size 8, 8 and 5 mm for 300 MHz to 3 GHz, and 8x8x8 points with step size 4, 4 and 2.5 mm for 3 GHz to 6 GHz. The Zoom Scan is performed around the highest E-field value to determine the averaged SAR-distribution over 10 g.

8.4 Volume Scan Procedures

The volume scan is used for assess overlapping SAR distributions for antennas transmitting in different frequency bands. It is equivalent to an oversized zoom scan used in standalone measurements. The measurement volume will be used to enclose all the simultaneous transmitting antennas. For antennas transmitting simultaneously in different frequency bands, the volume scan is measured separately in each frequency band. In order to sum correctly to compute the 1g aggregate SAR, the EUT remain in the same test position for all measurements and all volume scan use the same spatial resolution and grid spacing (step-size is 4, 4 and 2.5 mm). When all volume scan were completed, the software can combine and subsequently superpose these measurement data to calculating the multiband SAR.

8.5 SAR Averaged Methods

The local SAR inside the phantom is measured using small dipole sensing elements inside a probe body. The probe tip must not be in contact with the phantom surface in order to minimize measurements errors, but the highest local SAR will occur at the surface of the phantom.

An extrapolation is using to determinate this highest local SAR values. The extrapolation is based on a fourth-order least-square polynomial fit of measured data. The local SAR value is then extrapolated from the liquid surface with a 1mm step.

The measurements have to be performed over a limited time (due to the duration of the battery) so the step of measurement is high. It could vary between 5 and 8 mm. To obtain an accurate assessment of the maximum SAR averaged over 10g and 1 g requires a very fine resolution in the three dimensional scanned data array.

8.6 Power Drift Monitoring

All SAR testing is under the EUT install full charged battery and transmit maximum output power. In SATIMO measurement software, the power reference measurement and power drift measurement procedures are used for monitoring the power drift of EUT during SAR test. Both these procedures measure the field at a specified reference position before and after the SAR testing. The software will calculate the field difference in dB. If the power drift more than 5%, the SAR will be retested.



9. SAR Test Result

9.1 Conducted RF Output Power

WLAN(2.4G) – Conducted Power				
Test Mode	Data Rate	Channel	Frequency (MHz)	Average Power (dBm)
802.11b	1Mbps	CH 01	2412	18.45
		CH 06	2437	18.64
		CH 11	2462	18.86
802.11g	6Mbps	CH 01	2412	18.96
		CH 06	2437	18.70
		CH 11	2462	18.78
802.11n (20MHz)	MCS0	CH 01	2412	18.59
		CH 06	2437	18.60
		CH 11	2462	18.74
802.11n (40MHz)	MCS0	CH 03	2422	19.55
		CH 06	2437	19.20
		CH 09	2452	19.06

WLAN(5.2G) – Conducted Power			
Test Mode	Channel	Frequency (MHz)	Average Power (dBm)
802.11a	CH 36	5180	14.90
	CH 40	5200	14.10
	CH 48	5240	14.40
802.11n (HT20)	CH 36	5180	14.00
	CH 40	5200	13.60
	CH 48	5240	13.60
802.11n (HT40)	CH 38	5190	13.50
	CH 46	5230	13.40
802.11ac(VHT20)	CH 36	5180	14.00
	CH 40	5200	13.40
	CH 48	5240	13.70
802.11ac (VHT40)	CH 38	5190	13.50
	CH 46	5230	13.40
802.11ac (VHT80)	CH 42	5210	13.50



WLAN(5.3G) – Conducted Power			
Test Mode	Channel	Frequency (MHz)	Average Power (dBm)
802.11a	CH 52	5260	13.90
	CH 56	5280	13.60
	CH 64	5320	13.70
802.11n (HT20)	CH 52	5260	13.80
	CH 56	5280	13.60
	CH 64	5320	13.60
802.11n (HT40)	CH 54	5270	13.70
	CH62	5310	13.50
802.11ac(VHT20)	CH 52	5260	13.80
	CH 56	5280	13.50
	CH 64	5320	13.80
802.11ac (VHT40)	CH 54	5270	13.60
	CH 62	5310	13.50
802.11ac (VHT80)	CH 58	5290	13.60

WLAN(5.6G) – Conducted Power			
Test Mode	Channel	Frequency (MHz)	Average Power (dBm)
802.11a	CH 100	5500	13.00
	CH 120	5600	13.00
	CH 140	5700	11.60
802.11n (HT20)	CH 100	5500	12.90
	CH 120	5600	12.90
	CH 140	5700	11.50
802.11n (HT40)	CH 102	5510	12.60
	CH118	5590	12.20
	CH134	5670	13.00
802.11ac(VHT20)	CH 100	5500	12.80
	CH 120	5600	11.50
	CH 140	5700	12.80
802.11ac (VHT40)	CH 102	5510	12.20
	CH 118	5590	12.30
	CH 134	5670	12.30
802.11ac (VHT80)	CH106	5530	13.00
	CH122	5610	13.00

WLAN(5.8G) – Conducted Power			
Test Mode	Channel	Frequency (MHz)	Average Power (dBm)
802.11a	CH 149	5745	11.80



	CH 157	5785	10.90
	CH 165	5825	11.40
802.11n (HT20)	CH 149	5745	11.70
	CH 157	5785	10.70
	CH 165	5825	11.30
802.11n (HT40)	CH 151	5755	11.30
	CH159	5795	10.90
802.11ac(VHT20)	CH 149	5745	11.60
	CH 157	5785	10.70
	CH 165	5825	11.30
802.11ac (VHT40)	CH 151	5755	11.30
	CH159	5795	11.00
802.11ac (VHT80)	CH155	5775	10.90

Remark:

1. Per KDB 248227 D01 v02r02, For 802.11b DSSS SAR measurements, DSSS SAR procedure applies to fixed exposure test position and initial test position procedure applies to multiple exposure test positions.
2. Per KDB 248227 D01 v02r02, For 802.11b DSSS SAR measurements ,when the reported SAR of the highest measured maximum output power channel (see 3.1) for the exposure configuration is ≤ 0.8 W/kg, no further SAR testing is required for 802.11b DSSS in that exposure configuration. When the reported SAR is > 0.8 W/kg, SAR is required for that exposure configuration using the next highest measured output power channel. When any reported SAR is > 1.2 W/kg, SAR is required for the third channel; i.e., all channels require testing.
- 3 .For OFDM modes (802.11g/n), SAR is not required when the highest reported SAR for DSSS is adjusted by the ratio of OFDM to DSSS specified maximum output power and it is ≤ 1.2 W/kg.

Bluetooth - Maximum Average Power			
Test Mode	Data Rate	Average Power(dBm)	Tune-up power (dBm)
GFSK	1Mbps	3.58	4.0
4* π 4DQPSK	2Mbps	/	/
8DPSK	3Mbps	3.01	3.5

Bluetooth - EIRP				
Test Mode	Data Rate	Channel	Frequency (MHz)	Average Power (dBm)
BLE	1Mbps	CH 00	2402	-6.81
		CH 19	2440	-4.98
		CH 39	2480	-4.73
	2Mbps	CH 00	2402	-6.91
		CH 19	2440	-5.03
		CH 39	2480	-4.75



Remark:

Bluetooth maximum output power is 3.58dBm, Maximum Tune-Up output power is 4.0dBm. Per KDB 447498 D01 V06, the 1-g and 10-g SAR test exclusion thresholds for 100 MHz to 6 GHz at test separation distances ≤ 50 mm are determined by:

$[(\text{max. power of channel, including tune-up tolerance, mW}) / (\text{min. test separation distance, mm})] \cdot [\sqrt{f(\text{GHz})}] \leq 3.0$ for 1-g SAR and ≤ 7.5 for 10-g extremity SAR, where

- f(GHz) is the RF channel transmit frequency in GHz
- Power and distance are rounded to the nearest mW and mm before calculation
- The result is rounded to one decimal place for comparison

Tune-Up Power (dBm)	Max. Power (mW)	Distance (mm)	Frequency (GHz)	Result	Limit
4.0	2.51	5	2.480	0.791	3

The exclusion threshold is $0.791 < 3$, therefore, the RF exposure evaluation is not required.



9.2 Test Results for Standalone SAR Test

Body SAR

WLAN 2.4GHz– Body SAR Test									
Plot No.	Mode	Test Position Body	Frequency		Output Power (dBm)	Rated Limit (dBm)	Scaling Factor	SAR1g (W/kg)	Scaled SAR1g (W/kg)
			CH.	MHz					
1.	802.11b	Back Side	06	2412	18.64	19.0	1.086	0.831	0.903
2.	802.11b	Right Side	06	2412	18.64	19.0	1.086	0.354	0.385
3.	802.11b	Back Side	01	2437	18.45	19.0	1.135	1.047	1.188
4.	802.11b	Back Side	11	2462	18.86	19.0	1.033	0.59	0.609

WLAN 2.4GHz– Body SAR Test									
Plot No.	Mode	Test Position Body	Frequency		Output Power (dBm)	Rated Limit (dBm)	Scaling Factor	SAR1g (W/kg)	Scaled SAR1g (W/kg)
			CH.	MHz					
5.	802.11n (40MHz)	Back Side	03	2422	19.55	20.0	1.109	1.250	1.386
6.	802.11n (40MHz)	Right Side	03	2422	19.55	20.0	1.109	0.446	0.495
7.	802.11n (40MHz)	Back Side	06	2437	19.20	20.0	1.202	0.786	0.945
8.	802.11n (40MHz)	Back Side	09	2452	19.06	20.0	1.242	0.968	1.202

WLAN 5.2GHz– Body SAR Test									
Plot No.	Mode	Test Position Body	Frequency		Output Power (dBm)	Rated Limit (dBm)	Scaling Factor	SAR1g (W/kg)	Scaled SAR1g (W/kg)
			CH.	MHz					
9.	802.11a	Back Side	36	5180	14.90	15.0	1.023	0.533	0.545
10.	802.11a	Right Side	36	5180	14.90	15.0	1.023	0.292	0.299

WLAN 5.3GHz– Body SAR Test									
Plot No.	Mode	Test Position Body	Frequency		Output Power (dBm)	Rated Limit (dBm)	Scaling Factor	SAR1g (W/kg)	Scaled SAR1g (W/kg)
			CH.	MHz					
11.	802.11a	Back Side	52	5260	13.90	14.0	1.023	1.224	1.253
12.	802.11a	Right Side	52	5260	13.90	14.0	1.023	0.775	0.793
13.	802.11a	Back Side	56	5280	13.60	14.0	1.096	0.993	1.089
14.	802.11a	Back Side	64	5320	13.70	14.0	1.072	0.880	0.943



WLAN 5.6GHz– Body SAR Test									
Plot No.	Mode	Test Position Body	Frequency		Output Power (dBm)	Rated Limit (dBm)	Scaling Factor	SAR1g (W/kg)	Scaled SAR1g (W/kg)
			CH.	MHz					
15.	802.11a	Back Side	100	5500	13.00	13.5	1.122	0.363	0.407
16.	802.11a	Right Side	100	5500	13.00	13.5	1.122	0.221	0.248

WLAN 5.8GHz– Body SAR Test									
Plot No.	Mode	Test Position Body	Frequency		Output Power (dBm)	Rated Limit (dBm)	Scaling Factor	SAR1g (W/kg)	Scaled SAR1g (W/kg)
			CH.	MHz					
17.	802.11a	Back Side	149	5745	11.80	12.0	1.047	0.371	0.388
18.	802.11a	Right Side	149	5745	11.80	12.0	1.047	0.126	0.132

Remark: Per KDB 447498 D01 v06, if the highest output channel SAR for each exposure position ≤ 0.8 W/kg other channels SAR tests are not necessary.

Repeated SAR

WLAN 2.4GHz– Body SAR Test									
Plot No.	Mode	Test Position Body	Frequency		Output Power (dBm)	Rated Limit (dBm)	Scaling Factor	SAR1g (W/kg)	Scaled SAR1g (W/kg)
			CH.	MHz					
19.	802.11n (40MHz)	Back Side	03	2422	19.55	20.0	1.109	1.098	1.218

WLAN 5.3GHz– Body SAR Test									
Plot No.	Mode	Test Position Body	Frequency		Output Power (dBm)	Rated Limit (dBm)	Scaling Factor	SAR1g (W/kg)	Scaled SAR1g (W/kg)
			CH.	MHz					
20.	802.11a	Back Side	52	5260	13.90	14.0	1.023	1.248	1.277



9.3 Simultaneous Multi-band Transmission SAR Analysis

List of Mode for Simultaneous Multi-band Transmission

No.	Configurations	Body SAR
1	WLAN(Data) + Bluetooth(Data)	Yes

Remark:

1. According to the KDB 447498 D01 v06, when standalone SAR test exclusion applies to an antenna that transmits simultaneously with other antennas, the standalone SAR must be estimated according to following to determine simultaneous transmission SAR test exclusion:

$(\text{max. power of channel, including tune-up tolerance, mW}) / (\text{min. test separation distance, mm}) \cdot [\sqrt{f(\text{GHz})} / x]$ W/kg for test separation distances ≤ 50 mm;

where $x = 7.5$ for 1-g SAR, and $x = 18.75$ for 10-g SAR.

For simultaneous transmission analysis, SAR is estimated per KDB 447498 D01 v06 as below:

Bluetooth:

Tune-Up Power (dBm)	Max. Power (mW)	Distance (mm)	Frequency (GHz)	X	SAR(1g) 5mm
4	2.51	5	2.480	7.5	0.105

2. The maximum SAR summation is calculated based on the same configuration and test position.



Body SAR

WLAN and Bluetooth

	WLAN(2.4G)	Bluetooth	Summed SAR (W/kg)
Position	Scaled SAR (W/kg)	Scaled SAR (W/kg)	
Back	1.386	0.105	1.491
Top side	--	0.105	0.105
Bottom side	--	0.105	0.105
Right side	0.495	0.105	0.600
Left side	--	0.105	0.105

	WLAN(5G)	Bluetooth	Summed SAR (W/kg)
Position	Scaled SAR (W/kg)	Scaled SAR (W/kg)	
Back	1.277	0.105	1.382
Top side	--	0.105	0.105
Bottom side	--	0.105	0.105
Right side	0.793	0.105	0.898
Left side	--	0.105	0.105

10. Measurement Uncertainty

10.1 Uncertainty for EUT SAR Test

a	b	c	d	e= f(d,k)	f	g	h= c*f/e	i= c*g/e	k
Uncertainty Component	Sec.	Tol (+- %)	Prob. Dist.	Div.	Ci (1g)	Ci (10g)	1g Ui (+-%)	10g Ui (+-%)	Vi
Measurement System									
Probe calibration	E.2.1	7.0	N	1	1	1	7.00	7.00	∞
Axial Isotropy	E.2.2	2.5	R	√3	(1_Cp)^1/2	(1_Cp)^1/2	1.02	1.02	∞
Hemispherical Isotropy	E.2.2	4.0	R	√3	(Cp)^1/2	(Cp)^1/2	1.63	1.63	∞
Boundary effect	E.2.3	1.0	R	√3	1	1	0.58	0.58	∞
Linearity	E.2.4	5.0	R	√3	1	1	2.89	2.89	∞
System detection limits	E.2.5	1.0	R	√3	1	1	0.58	0.58	∞
Readout Electronics	E.2.6	0.02	N	1	1	1	0.02	0.02	∞
Reponse Time	E.2.7	3.0	R	√3	1	1	1.73	1.73	∞
Integration Time	E.2.8	2.0	R	√3	1	1	1.15	1.15	∞
RF ambient Conditions – Noise	E.6.1	3.0	R	√3	1	1	1.73	1.73	∞
RF ambient Conditions - Reflections	E.6.1	3.0	R	√3	1	1	1.73	1.73	∞
Probe positioner Mechanical Tolerance	E.6.2	2.0	R	√3	1	1	1.15	1.15	∞
Probe positioning with respect to Phantom Shell	E.6.3	0.05	R	√3	1	1	0.03	0.03	∞
Extrapolation, interpolation and integration Algorithms for Max. SAR Evaluation	E.5	5.0	R	√3	1	1	2.89	2.89	∞
Test Sample Related									
Test sample positioning	E.4.2	0.03	N	1	1	1	0.03	0.03	N-1
Device Holder Uncertainty	E.4.1	5.00	N	1	1	1	5.00	5.00	
Output power Variation - SAR drift measurement	E.2.9	12.02	R	√3	1	1	6.94	6.94	∞
SAR scaling	E6.5	0.0	R	√3	1	1	0.0	0.0	∞
Phantom and Tissue Parameters									
Phantom Uncertainty (Shape and thickness tolerances)	E.3.1	0.05	R	√3	1	1	0.03	0.03	∞
Uncertainty in SAR correction for deviations in permittivity and conductivity	E3.2	1.9	R	√3	1	0.84	1.10	0.90	∞
Liquid conductivity - deviation from target value	E.3.2	5.00	R	√3	0.64	0.43	1.85	1.24	∞



Liquid conductivity measurement uncertainty	E.3.3	5.00	N	1	0.64	0.43	3.20	2.15	∞
Liquid permittivity - deviation from target value	E.3.2	0.37	R	√3	0.6	0.49	0.13	0.10	∞
Liquid permittivity measurement uncertainty	E.3.3	10.00	N	1	0.6	0.49	6.00	4.90	∞
Combined Standard Uncertainty			RSS				12.98	12.53	
Expanded Uncertainty (95% Confidence interval)			K=2				25.32	24.43	

10.2 Uncertainty for System Performance Check

a	b	c	d	e= f(d,k)	f	g	h= c*f/e	i= c*g/e	k
Uncertainty Component	Sec.	Tol (+- %)	Prob. Dist.	Div.	Ci (1g)	Ci (10g)	1g Ui (+-%)	10g Ui (+-%)	Vi
Measurement System									
Probe calibration	E.2.1	7.0	N	1	1	1	7.00	7.00	∞
Axial Isotropy	E.2.2	2.5	R	√3	(1_Cp)^1/2	(1_Cp)^1/2	1.02	1.02	∞
Hemispherical Isotropy	E.2.2	4.0	R	√3	(Cp)^1/2	(Cp)^1/2	1.63	1.63	∞
Boundary effect	E.2.3	1.0	R	√3	1	1	0.58	0.58	∞
Linearity	E.2.4	5.0	R	√3	1	1	2.89	2.89	∞
System detection limits	E.2.5	1.0	R	√3	1	1	0.58	0.58	∞
Modulation response	E.2.5	0	R	√3	0	0	0.0	0.0	∞
Readout Electronics	E.2.6	0.02	N	1	1	1	0.02	0.02	∞
Reponse Time	E.2.7	3.0	R	√3	1	1	1.73	1.73	∞
Integration Time	E.2.8	2.0	R	√3	1	1	1.15	1.15	∞
RF ambient Conditions – Noise	E.6.1	3.0	R	√3	1	1	1.73	1.73	∞
RF ambient Conditions - Reflections	E.6.1	3.0	R	√3	1	1	1.73	1.73	∞
Probe positioner Mechanical Tolerance	E.6.2	2.0	R	√3	1	1	1.15	1.15	∞
Probe positioning with respect to Phantom Shell	E.6.3	0.05	R	√3	1	1	0.03	0.03	∞
Extrapolation, interpolation and integration Algorithms for Max. SAR Evaluation	E.5.2	5.0	R	√3	1	1	2.89	2.89	∞



Dipole									
Dipole axis to liquid Distance	8,E.4.2	1.00	N	$\sqrt{3}$	1	1	0.58	0.58	N-1
Input power and SAR drift measurement	8,6.6.2	12.02	R	$\sqrt{3}$	1	1	6.94	6.94	∞
Deviation of experimental dipole from numerical dipole	E.6.4	5.5	R	$\sqrt{3}$	1	1	3.20	3.20	∞
Phantom and Tissue Parameters									
Phantom Uncertainty (Shape and thickness tolerances)	E.3.1	0.05	R	$\sqrt{3}$	1	1	0.03	0.03	∞
Uncertainty in SAR correction for deviations in permittivity and conductivity	E3.2	2.0	R	$\sqrt{3}$	1	0.84	1.10	1.10	∞
Liquid conductivity - deviation from target value	E.3.2	5.00	R	$\sqrt{3}$	0.64	0.43	1.85	1.24	
Liquid conductivity - measurement uncertainty	E.3.3	5.00	N	1	0.64	0.43	3.20	2.15	
Liquid permittivity - deviation from target value	E.3.2	0.37	R	$\sqrt{3}$	0.6	0.49	0.13	0.10	
Liquid permittivity - measurement uncertainty	E.3.3	10.00	N	1	0.6	0.49	6.00	4.90	M
Combined Standard Uncertainty			RSS				12.00	11.50	
Expanded Uncertainty (95% Confidence interval)			K=2				23.39	22.43	

Annex A. Plots of System Performance Check

MEASUREMENT 1

For Body Liquid

Type: Validation measurement (Fast, 75.00 %)

Measurement duration: 12 minutes 21 seconds

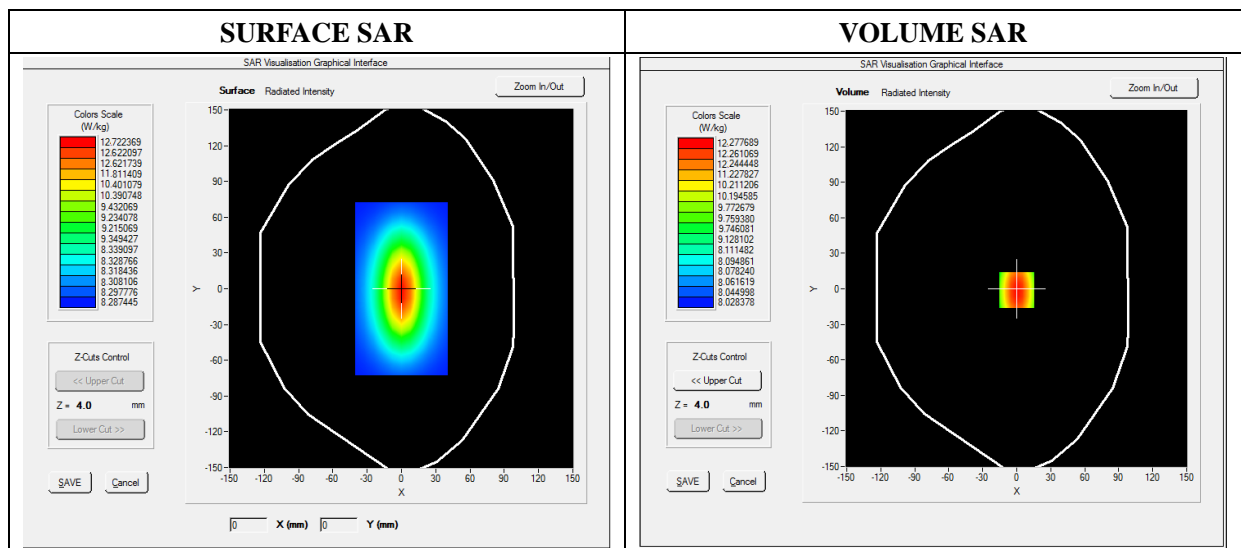
E-field Probe: SN 45/15 EPGO280; ConvF: 5.64; Calibrated: 2019-07-08

A. Experimental conditions

Area Scan	dx=8mm dy=8mm
Zoom Scan	dx=8mm dy=8mm dz=5mm
Phantom	Validation plane
Device Position	Dipole
Band	CW2450
Signal	Duty Cycle 1:1

B. SAR Measurement Results

Frequency (MHz)	2450.000000
Relative Permittivity (real part)	52.010212
Conductivity (S/m)	1.910255
Power Variation (%)	1.369745
Ambient Temperature	21.1
Liquid Temperature	21.2

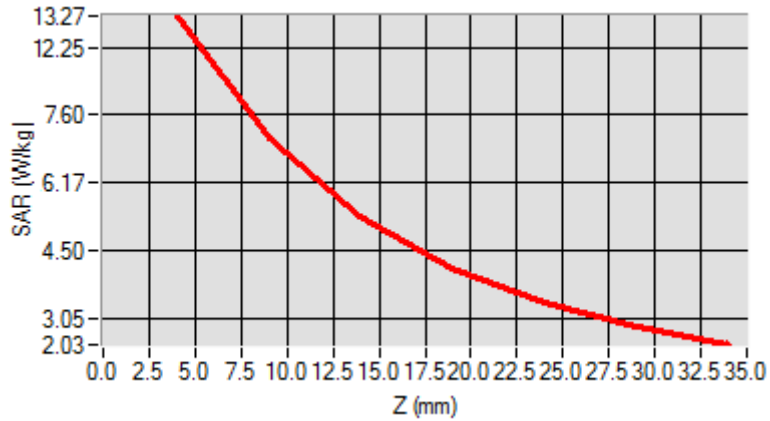


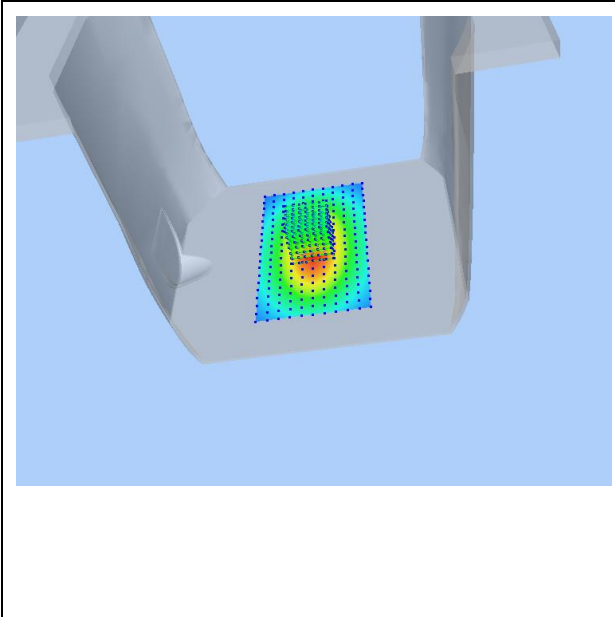
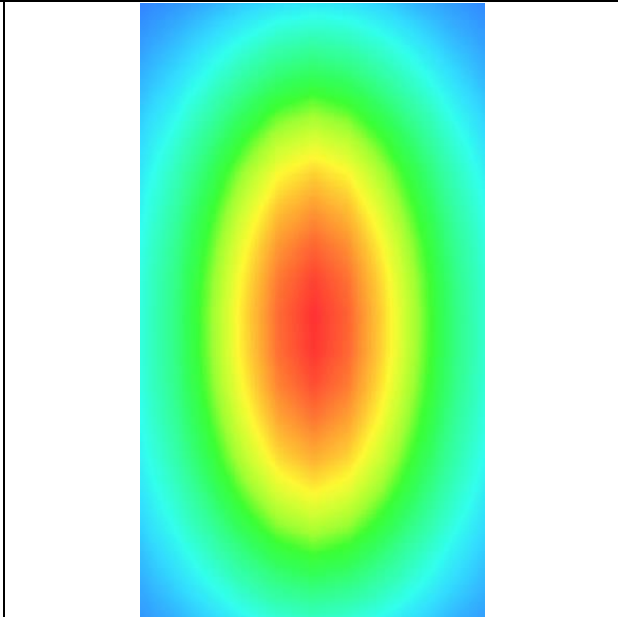
Maximum location: X=0.00, Y=0.00

SAR 10g (W/Kg)	6.119522
SAR 1g (W/Kg)	12.592360

Z Axis Scan

Z (mm)	0.00	4.00	9.00	14.00	19.00	24.00	29.00
SAR (W/Kg)	0.0000	13.1911	11.7951	9.2945	8.5400	6.3712	4.6225



3D screen shot	Hot spot position
	

MEASUREMENT 2

Type: Validation measurement (Fast, 75.00 %)

Measurement duration: 12 minutes 21 seconds

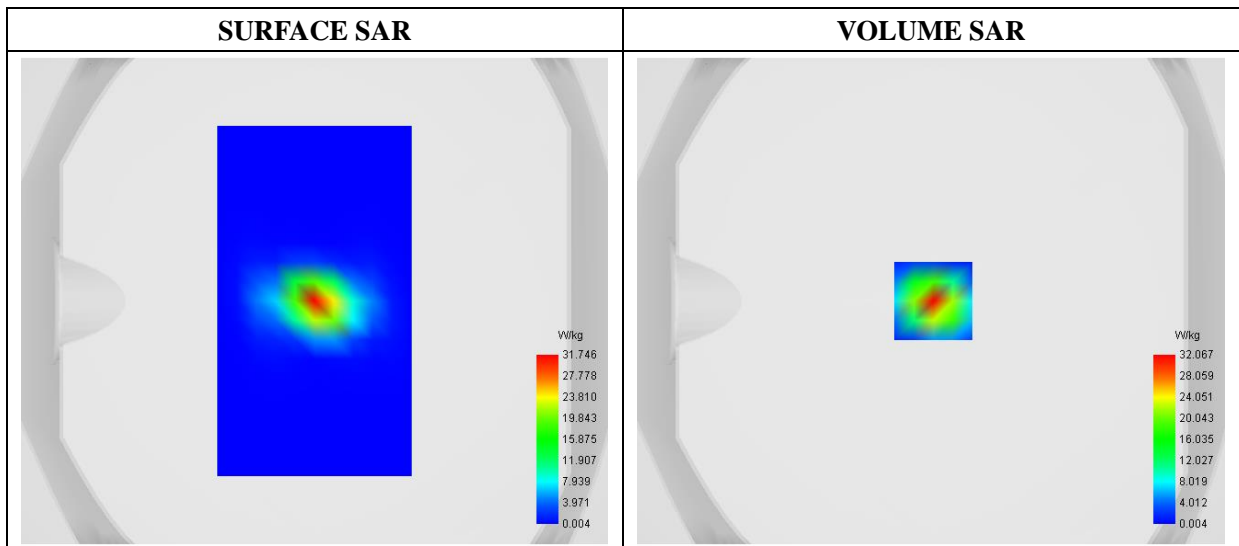
E-field Probe: SSE2 - SN 45/15 EPGO280; ConvF: Refer to the Calibration Certificate; Calibrated: 2019/07/08

A. Experimental conditions

Area Scan	dx=8mm dy=8mm
Phantom	Validation plane
Device Position	Dipole
Band	CW5200
Signal	Duty Cycle 1:1

B. SAR Measurement Results

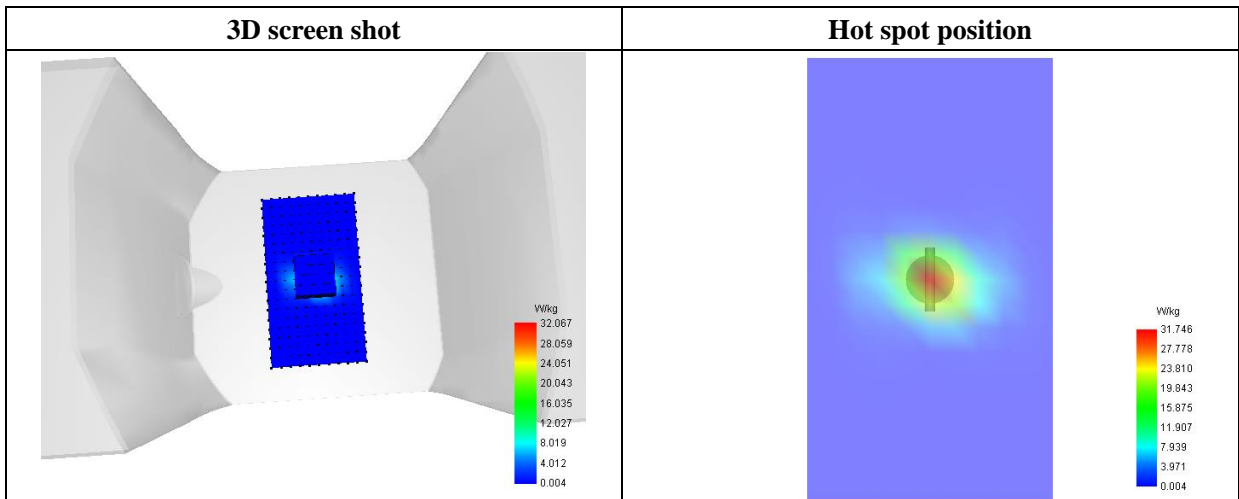
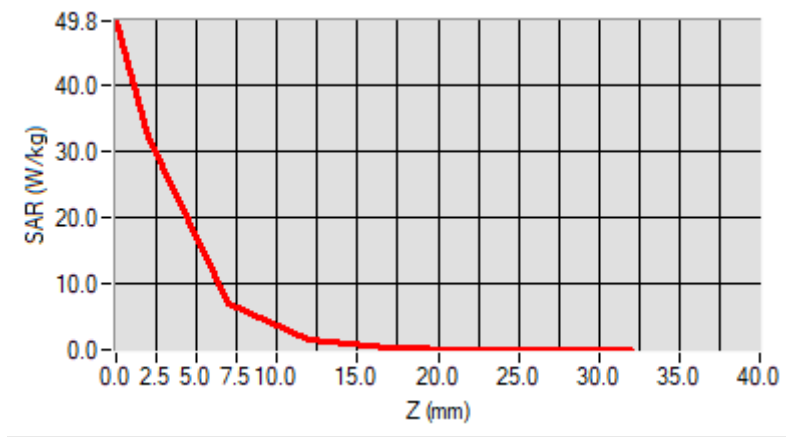
Frequency (MHz)	5200.000000
Relative Permittivity (real part)	48.501241
Conductivity (S/m)	5.160213
Power Variation (%)	0.749201
Ambient Temperature	21.1
Liquid Temperature	21.2



Maximum location: X=1.00, Y=0.00

SAR 10g (W/Kg)	6.047588
SAR 1g (W/Kg)	16.681175

Z (mm)	0.00	2.00	7.00	12.00	17.00	22.00	27.00
SAR (W/Kg)	49.8193	32.0669	7.0244	1.5969	0.3410	0.0635	0.0070



MEASUREMENT 3

Type: Validation measurement (Fast, 75.00 %)

Measurement duration: 12 minutes 21 seconds

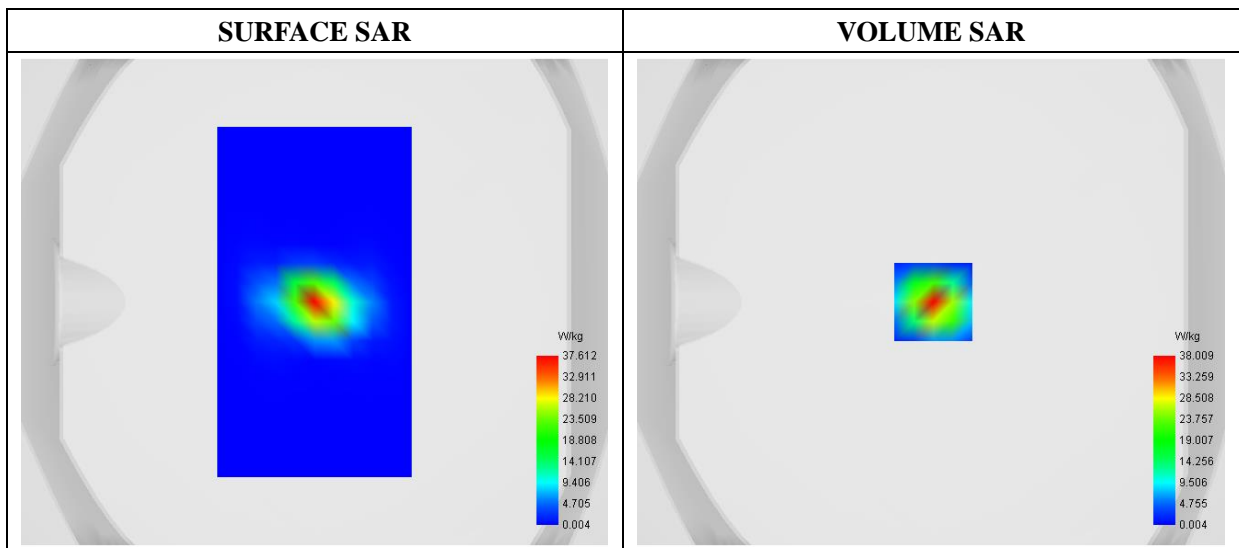
E-field Probe: SSE2 - SN 45/15 EPGO280; ConvF: Refer to the Calibration Certificate; Calibrated: 2019/07/08

A. Experimental conditions

Area Scan	dx=8mm dy=8mm
Zoom Scan	dx=4mm dy=4mm dz=2mm
Phantom	Validation plane
Device Position	Dipole
Band	CW5400
Signal	CW (Crest factor: 1.0)

B. SAR Measurement Results

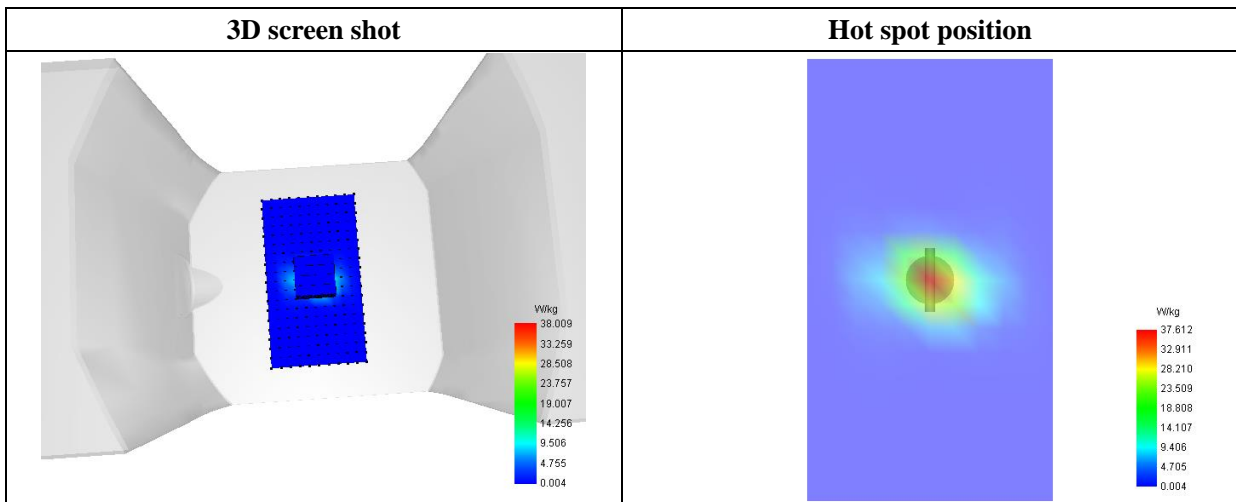
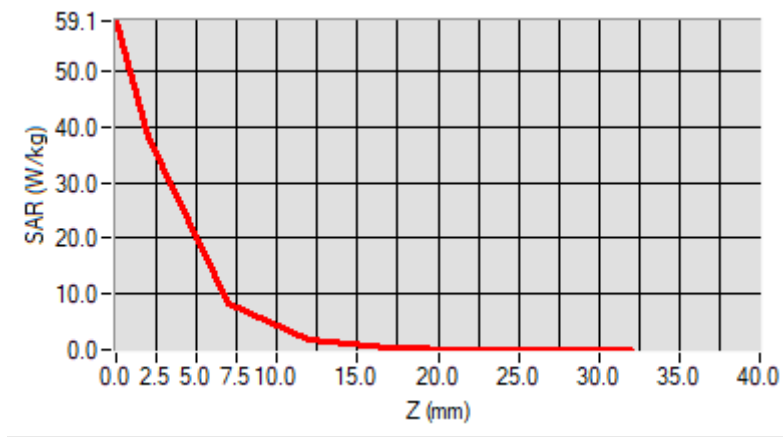
Frequency (MHz)	5400.000000
Relative Permittivity (real part)	48.502911
Conductivity (S/m)	5.261483
Power Variation (%)	0.943782
Ambient Temperature	21.1
Liquid Temperature	21.2



Maximum location: X=1.00, Y=0.00

SAR 10g (W/Kg)	5.872241
SAR 1g (W/Kg)	17.329716

Z (mm)	0.00	2.00	7.00	12.00	17.00	22.00	27.00
SAR (W/Kg)	59.0521	38.0093	8.3284	1.8732	0.3993	0.0816	0.0132



MEASUREMENT 4

Type: Validation measurement (Fast, 75.00 %)

Measurement duration: 12 minutes 21 seconds

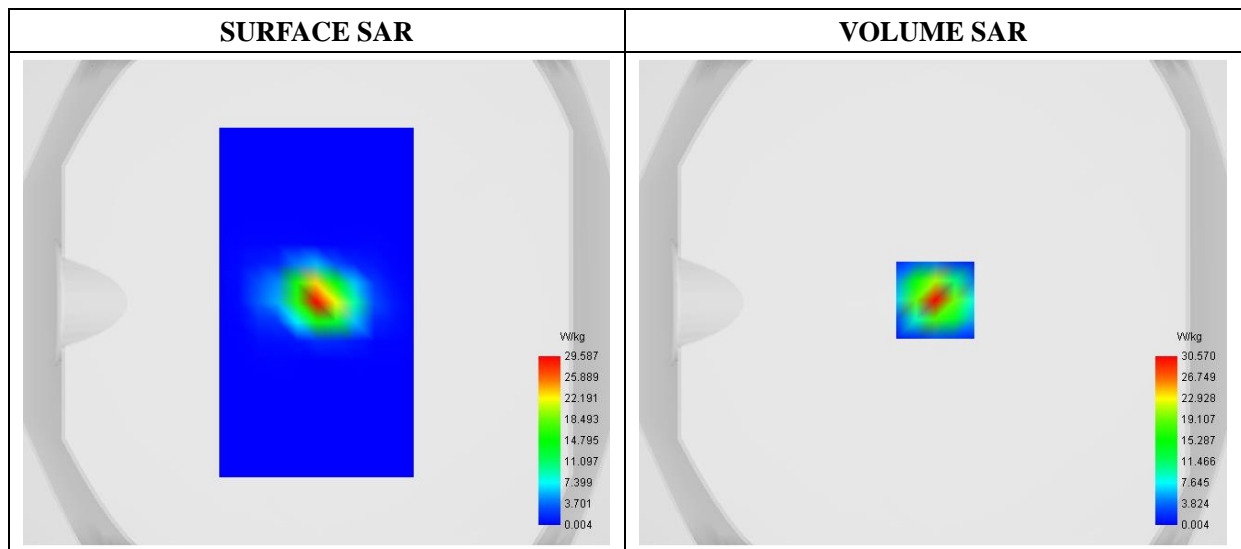
E-field Probe: SSE2 - SN 45/15 EPGO280; ConvF: Refer to the Calibration Certificate; Calibrated: 2019/07/08

A. Experimental conditions

Area Scan	dx=8mm dy=8mm
Zoom Scan	dx=4mm dy=4mm dz=2mm
Phantom	Validation plane
Device Position	Dipole
Band	CW5600
Signal	Duty Cycle 1:1

B. SAR Measurement Results

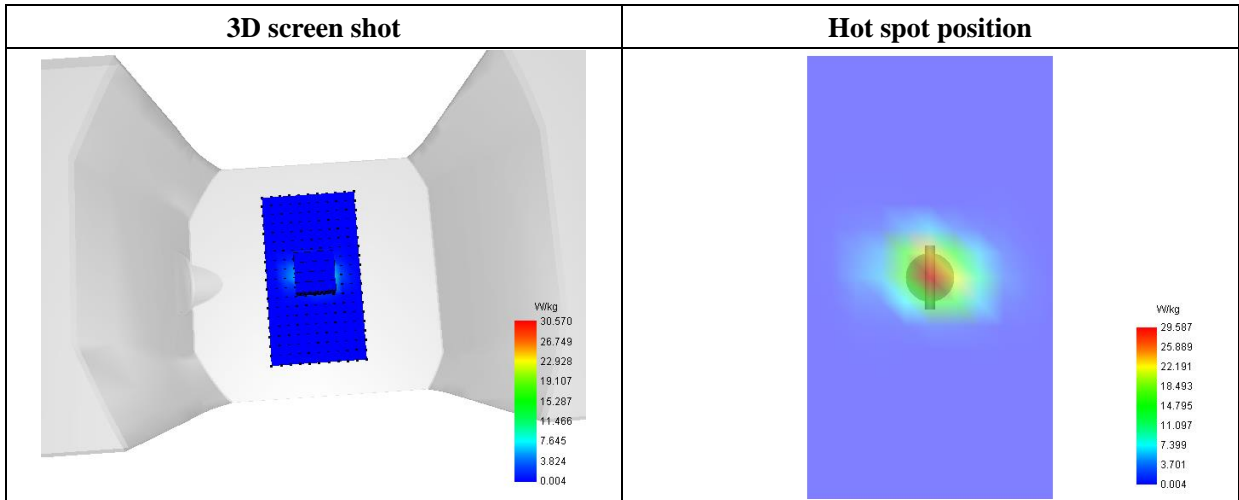
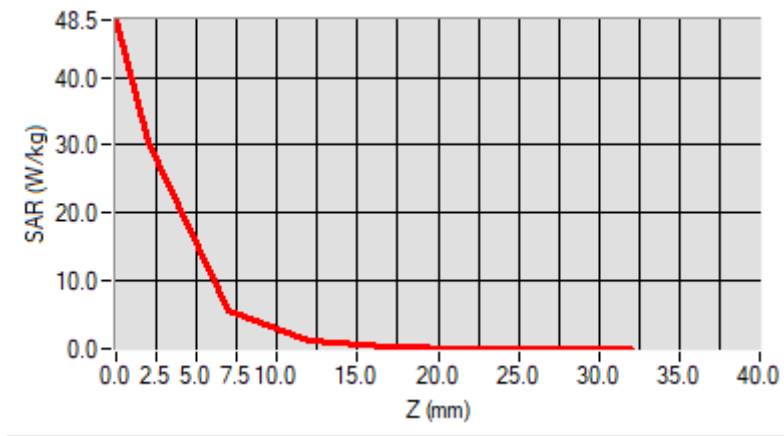
Frequency (MHz)	5600.000000
Relative Permittivity (real part)	48.302143
Conductivity (S/m)	5.521688
Power Variation (%)	0.749201
Ambient Temperature	21.1
Liquid Temperature	21.2



Maximum location: X=1.00, Y=1.00

SAR 10g (W/Kg)	5.912341
SAR 1g (W/Kg)	17.110732

Z (mm)	0.00	2.00	7.00	12.00	17.00	22.00	27.00
SAR (W/Kg)	48.4695	30.5699	5.7100	1.0698	0.1906	0.0364	0.0052



MEASUREMENT 5

Type: Validation measurement (Fast, 75.00 %)

Measurement duration: 12 minutes 21 seconds

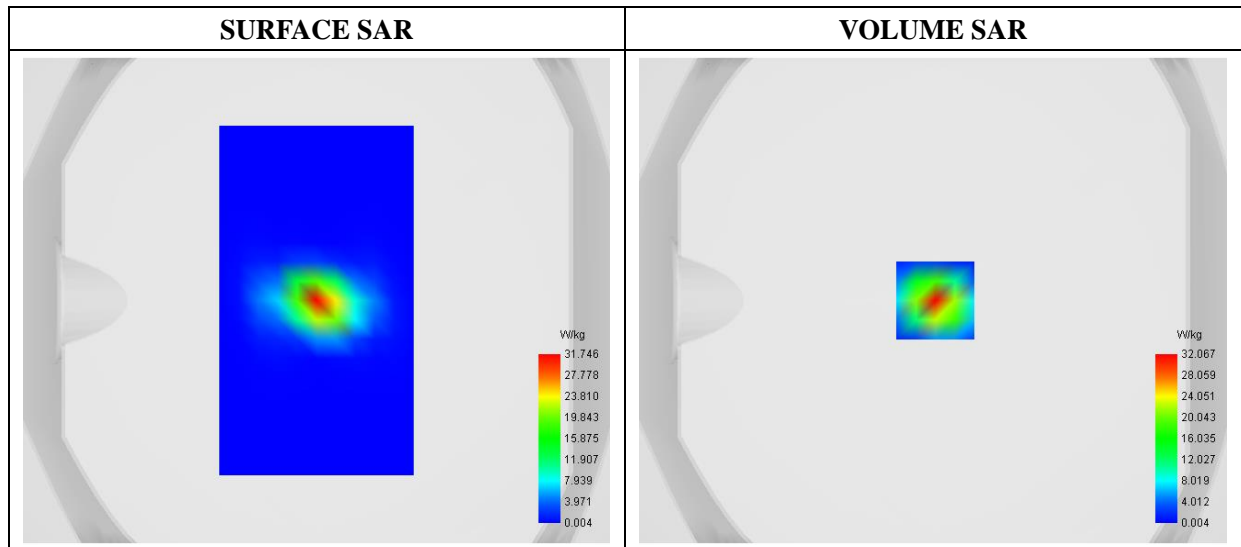
E-field Probe: SSE2 - SN 45/15 EPGO280; ConvF: Refer to the Calibration Certificate; Calibrated: 2019/07/08

A. Experimental conditions

Area Scan	dx=8mm dy=8mm
Phantom	Validation plane
Device Position	Dipole
Band	CW5800
Signal	Duty Cycle 1:1

B. SAR Measurement Results

Frequency (MHz)	5800.000000
Relative Permittivity (real part)	48.501939
Conductivity (S/m)	5.761487
Power Variation (%)	0.749201
Ambient Temperature	21.1
Liquid Temperature	21.2

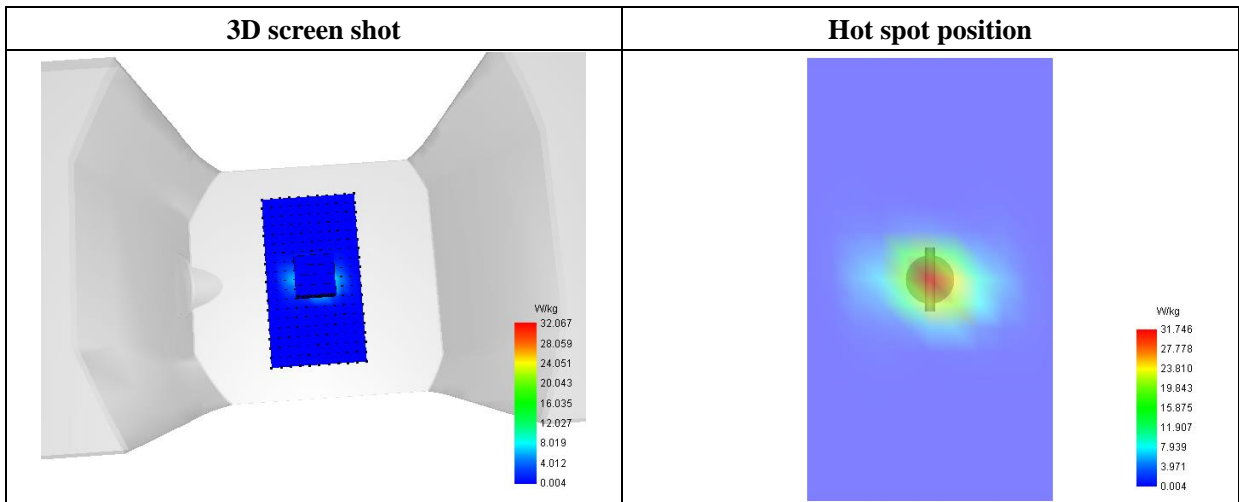
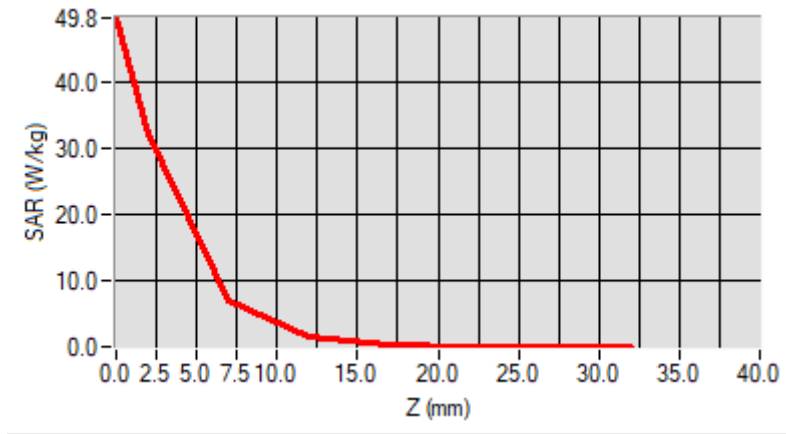


Maximum location: X=1.00, Y=0.00

SAR 10g (W/Kg)	6.047588
-----------------------	-----------------

SAR 1g (W/Kg)	16.681175
----------------------	------------------

Z (mm)	0.00	2.00	7.00	12.00	17.00	22.00	27.00
SAR (W/Kg)	49.8193	32.0669	7.0244	1.5969	0.3410	0.0635	0.0070





Annex B. Plots of SAR Measurement

<u>BAND</u>	<u>PARAMETERS</u>
WIFI(2.4G)_ 802.11b	<u>Measurement 3:</u> Flat Plane with Back side device position on Low Channel in 802.11b mode
WIFI(2.4G)_ 802.11n (40MHz)	<u>Measurement 5:</u> Flat Plane with Back side device position on Low Channel in 802.11n mode
WIFI(5.2G)_ 802.11a	<u>Measurement 9:</u> Flat Plane with Back side device position on Low Channel in 802.11a mode
WIFI(5.3G)_ 802.11a	<u>Measurement 11:</u> Flat Plane with Back side device position on Low Channel in 802.11a mode
WIFI(5.6G)_ 802.11a	<u>Measurement 15:</u> Flat Plane with Back side device position on Low Channel in 802.11a mode
WIFI(5.8G)_ 802.11a	<u>Measurement 17:</u> Flat Plane with Back side device position on Low Channel in 802.11a mode
WIFI(2.4G)_ 802.11n (40MHz)	<u>Measurement 19:</u> Flat Plane with Back side device position on Back Channel in 802.11n mode
WIFI(5.3G)_ 802.11a	<u>Measurement 20:</u> Flat Plane with Back side device position on Low Channel in 802.11a mode
<i>Remark: SAR plot is showed the highest measured SAR in each exposure configuration, wireless mode and frequency band combination.</i>	

MEASUREMENT 3

Type: Phone measurement (Complete)

Date of measurement: 2020-04-30

Measurement duration: 12 minutes 3 seconds

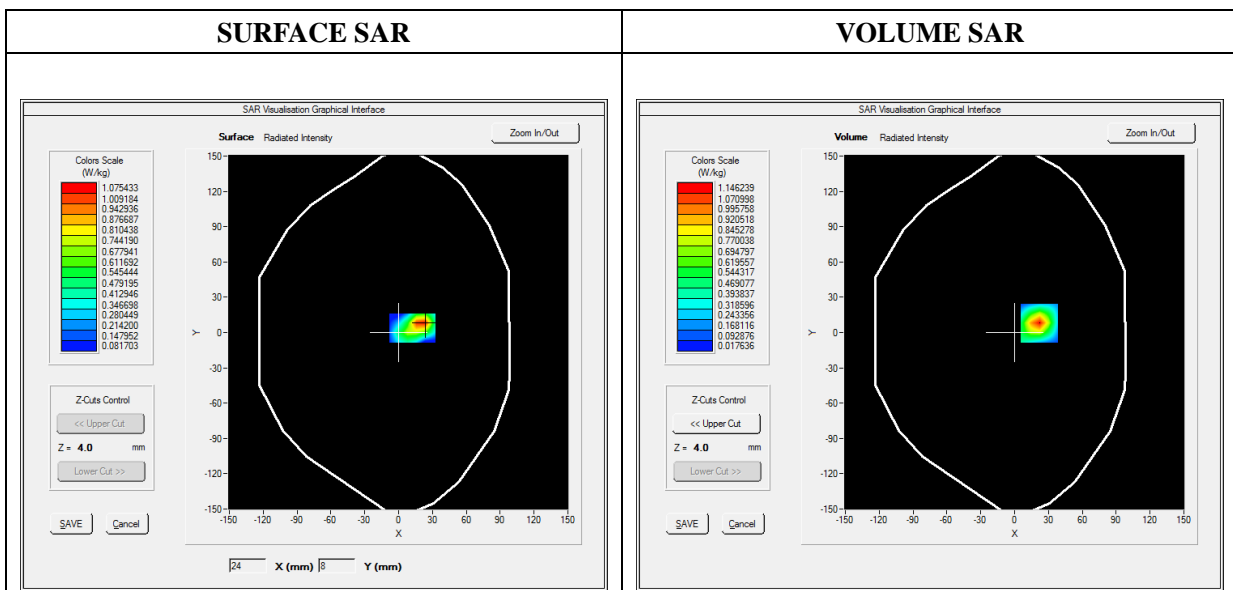
E-field Probe: SN 45/15 EPGO280; ConvF: 5.64; Calibrated: 2019-07-08

A. Experimental conditions

Area Scan	dx=8mm dy=8mm
Zoom Scan	dx=8mm dy=8mm dz=5mm
Phantom	Flat Plane
Device Position	Back
Band	WiFi_802.11b
Channels	Low
Signal	Duty Cycle 1:1

B. SAR Measurement Results

Frequency (MHz)	2412.000000
Relative Permittivity (real part)	52.010212
Conductivity (S/m)	1.910255
Power Variation (%)	2.403721
Ambient Temperature	21.1
Liquid Temperature	21.2

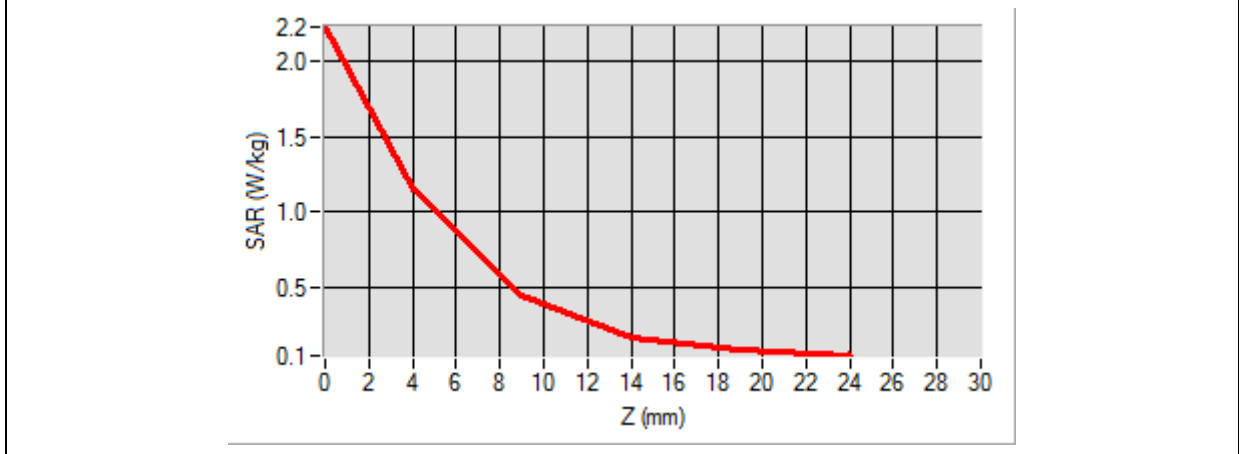


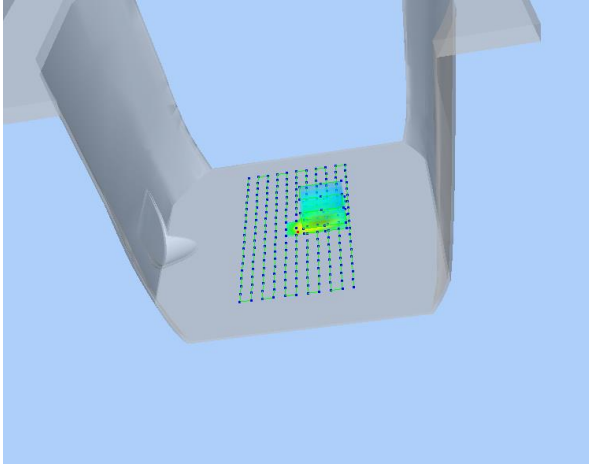
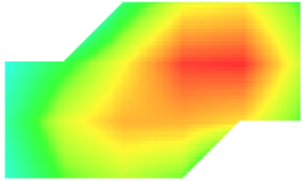
Maximum location: X=22.00, Y=8.00

SAR Peak: 2.23 W/kg

SAR 10g (W/Kg)	0.440526
SAR 1g (W/Kg)	1.046940

Z (mm)	0.00	4.00	9.00	14.00	19.00
SAR (W/Kg)	2.2231	1.1462	0.4539	0.1784	0.0875



3D screen shot	Hot spot position
	

MEASUREMENT 5

Type: Phone measurement (Complete)

Date of measurement: 2020-04-30

Measurement duration: 12 minutes 3 seconds

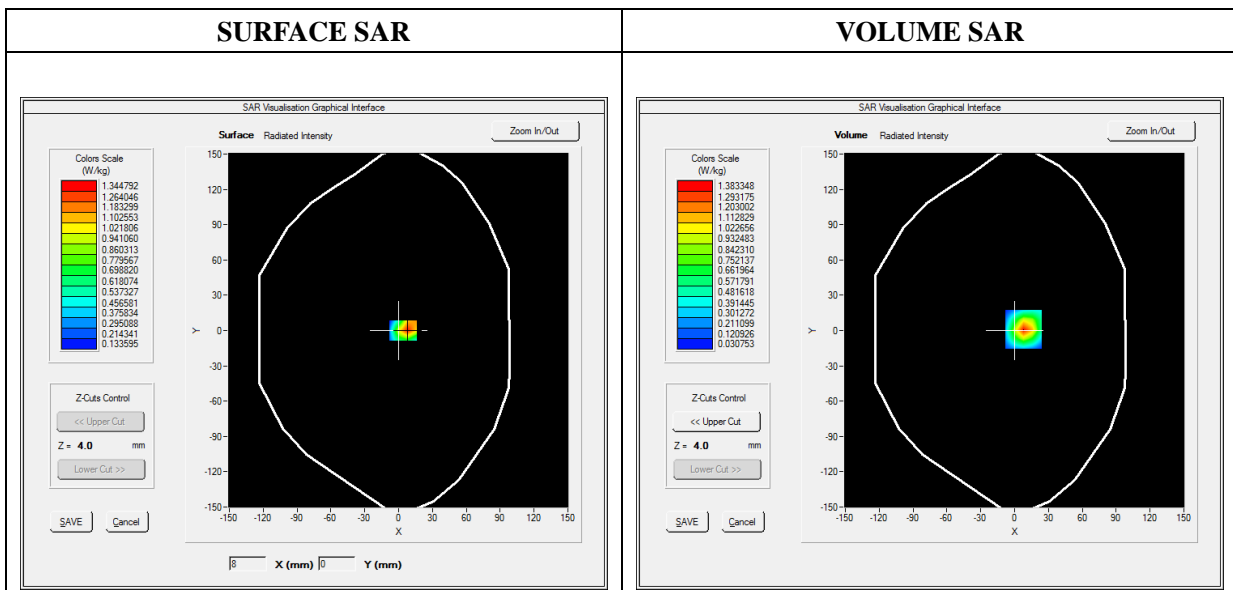
E-field Probe: SN 45/15 EPGO280; ConvF: 5.64; Calibrated: 2019-07-08

A. Experimental conditions

Area Scan	dx=8mm dy=8mm
Zoom Scan	dx=8mm dy=8mm dz=5mm
Phantom	Flat Plane
Device Position	Back
Band	WiFi_802.11n
Channels	Low
Signal	Duty Cycle 1:1

B. SAR Measurement Results

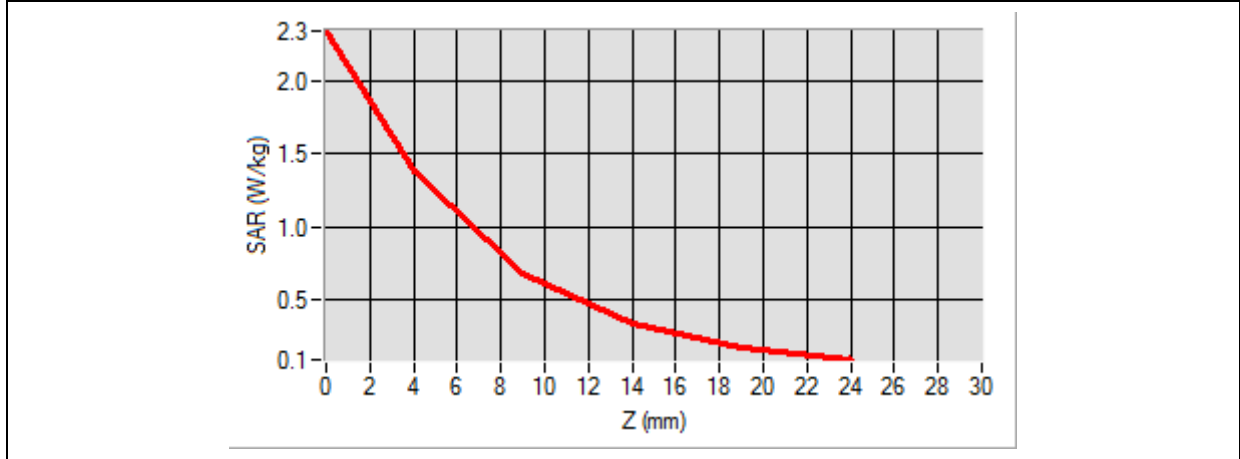
Frequency (MHz)	2422.000000
Relative Permittivity (real part)	52.010212
Conductivity (S/m)	1.910255
Power Variation (%)	2.403721
Ambient Temperature	21.1
Liquid Temperature	21.2

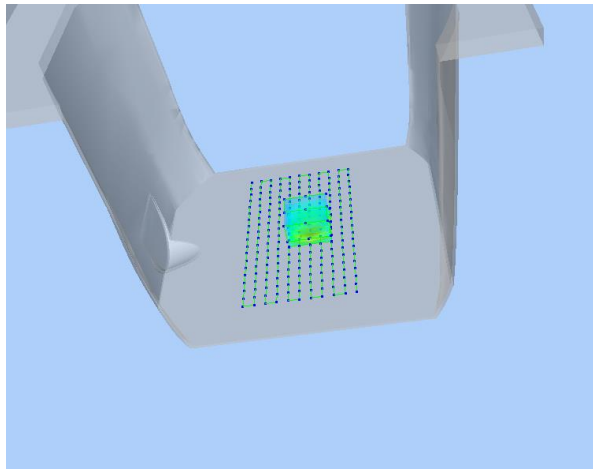
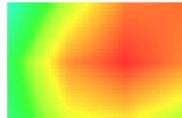


Maximum location: X=8.00, Y=1.00
SAR Peak: 2.36 W/kg

SAR 10g (W/Kg)	0.552528
SAR 1g (W/Kg)	1.250078

Z (mm)	0.00	4.00	9.00	14.00	19.00
SAR (W/Kg)	2.3429	1.3833	0.6807	0.3311	0.1703



3D screen shot	Hot spot position
	

MEASUREMENT 9

Type: Phone measurement (Complete)

Date of measurement: 2020-05-06

Measurement duration: 12 minutes 3 seconds

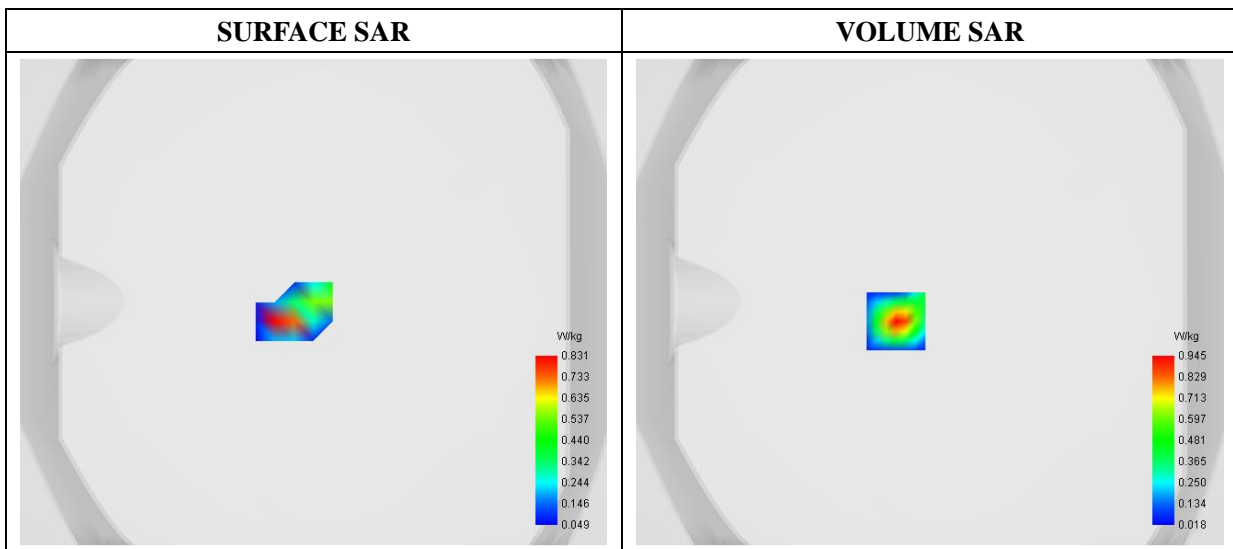
E-field Probe: SSE2 - SN 45/15 EPGO280; ConvF: Refer to the Calibration Certificate; Calibrated: 2019/07/08

A. Experimental conditions

Area Scan	dx=8mm dy=8mm
Zoom Scan	dx=4mm dy=4mm dz=2mm
Phantom	Flat Plane
Device Position	Back
Band	WiFi(5.2GHz)_802.11a
Channels	Low
Signal	Duty Cycle: 1:1

B. SAR Measurement Results

Frequency (MHz)	5180.000000
Relative Permittivity (real part)	35.612911
Conductivity (S/m)	4.871483
Power Variation (%)	0.542660
Ambient Temperature	22.0
Liquid Temperature	22.3



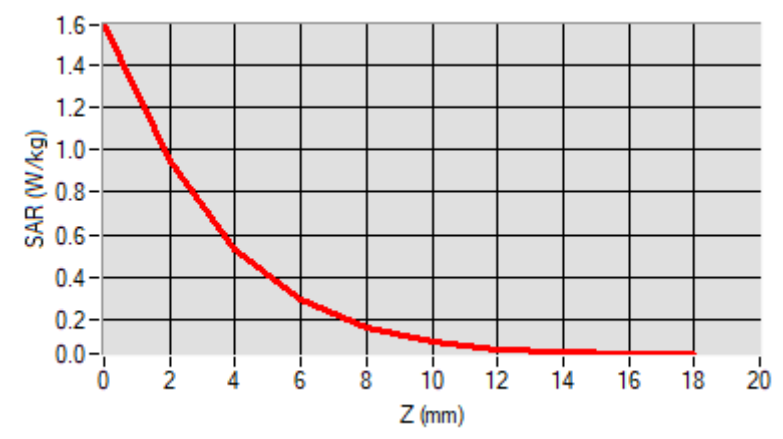
Maximum location: X=-14.00, Y=-8.00

D. SAR 1g & 10g

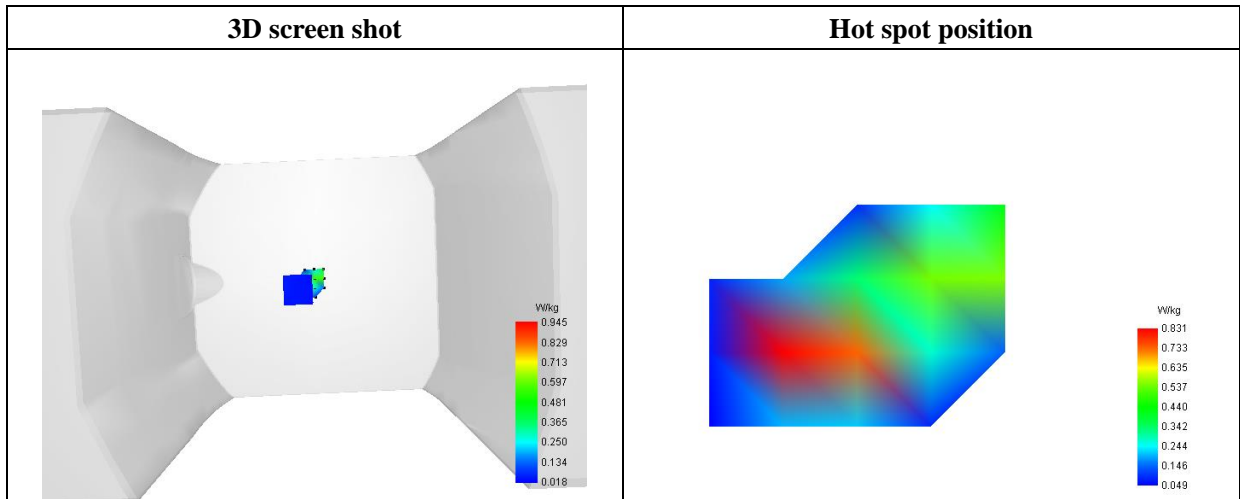
SAR 10g (W/Kg)	0.167341
SAR 1g (W/Kg)	0.532698

E. Z Axis Scan

Z (mm)	0.00	2.00	4.00	6.00	8.00	10.00	12.00	14.00	16.00	18.00
SAR (W/Kg)	1.5854	0.9446	0.5349	0.2926	0.1628	0.0963	0.0637	0.0489	0.0430	0.0430



F. 3D Image



MEASUREMENT 11

Type: Phone measurement (Complete)

Date of measurement: 2020-05-06

Measurement duration: 12 minutes 3 seconds

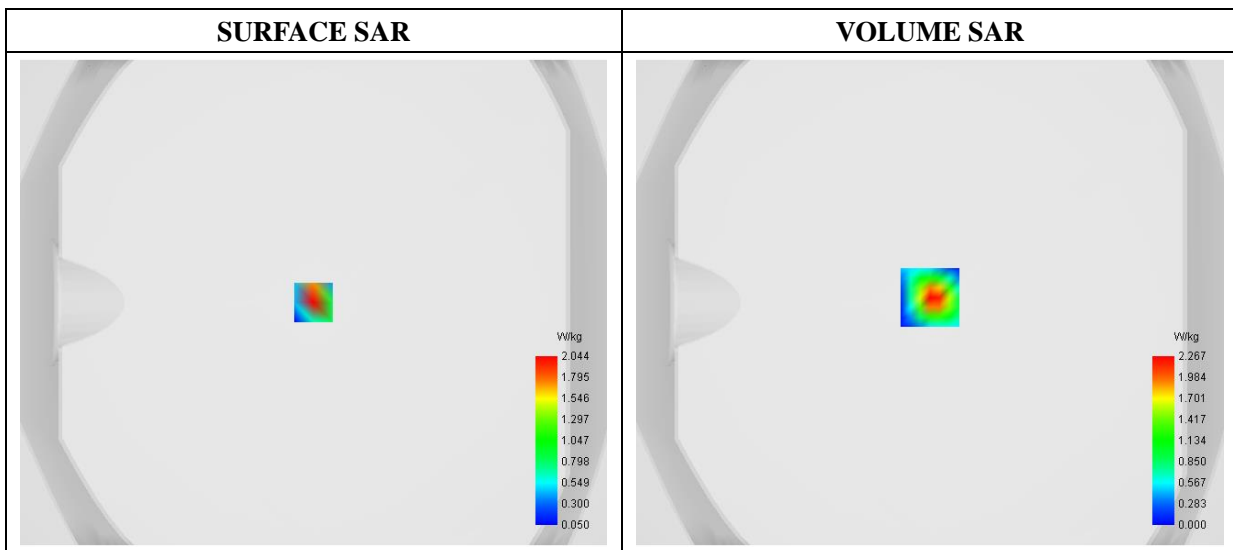
E-field Probe: SSE2 - SN 45/15 EPGO280; ConvF: Refer to the Calibration Certificate; Calibrated: 2019/07/08

A. Experimental conditions

Area Scan	sam_direct_droit2_surf8mm.txt
Phantom	Flat Plane
Device Position	Back
Band	WiFi(5.3GHz)_802.11a
Channels	Low
Signal	Duty Cycle: 1:1

B. SAR Measurement Results

Frequency (MHz)	5260.000000
Relative Permittivity (real part)	35.620839
Conductivity (S/m)	4.740192
Power Variation (%)	0.463782
Ambient Temperature	22.0
Liquid Temperature	22.3



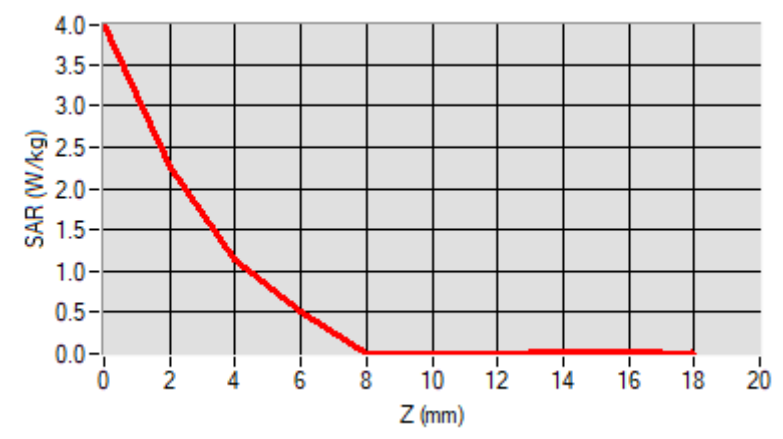
Maximum location: X=0.00, Y=2.00

D. SAR 1g & 10g

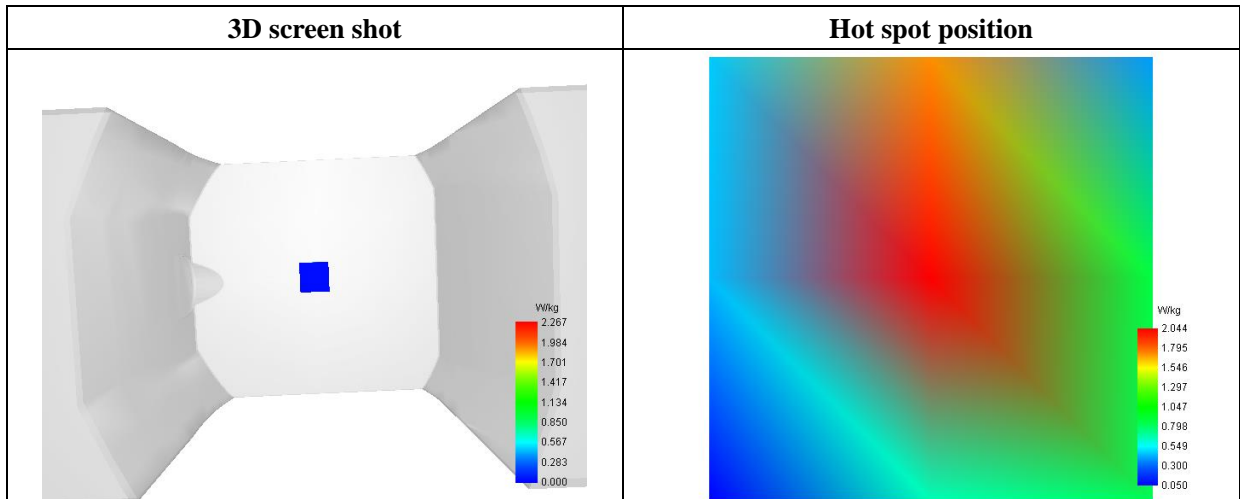
SAR 10g (W/Kg)	0.316181
SAR 1g (W/Kg)	1.224198

E. Z Axis Scan

Z (mm)	0.00	2.00	4.00	6.00	8.00	10.00	12.00	14.00	16.00	18.00
SAR (W/Kg)	3.9801	2.2675	1.1335	0.5187	0.0045	0.0100	0.0091	0.0182	0.0326	



F. 3D Image



MEASUREMENT 15

Type: Phone measurement (Complete)

Date of measurement: 2020-05-08

Measurement duration: 12 minutes 3 seconds

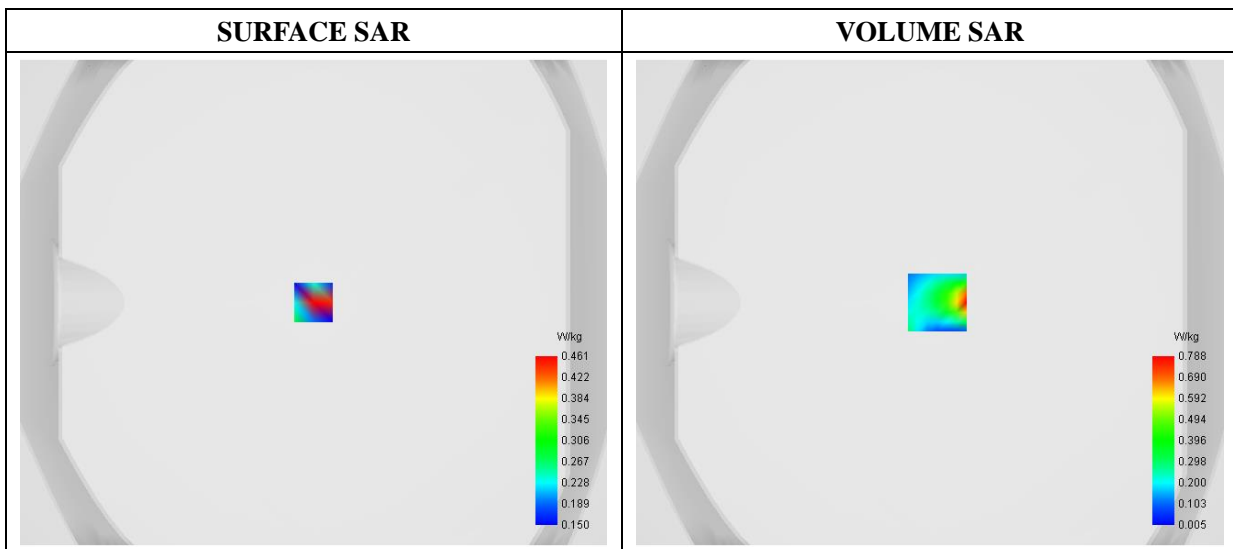
E-field Probe: SSE2 - SN 45/15 EPGO280; ConvF: Refer to the Calibration Certificate; Calibrated: 2019/07/08

A. Experimental conditions

Area Scan	sam_direct_droit2_surf8mm.txt
Phantom	Flat Plane
Device Position	Back
Band	WiFi(5.6GHz)_802.11a
Channels	Low
Signal	Duty Cycle: 1:1

B. SAR Measurement Results

Frequency (MHz)	5500.000000
Relative Permittivity (real part)	35.301254
Conductivity (S/m)	5.210512
Power Variation (%)	0.848732
Ambient Temperature	22.0
Liquid Temperature	22.3



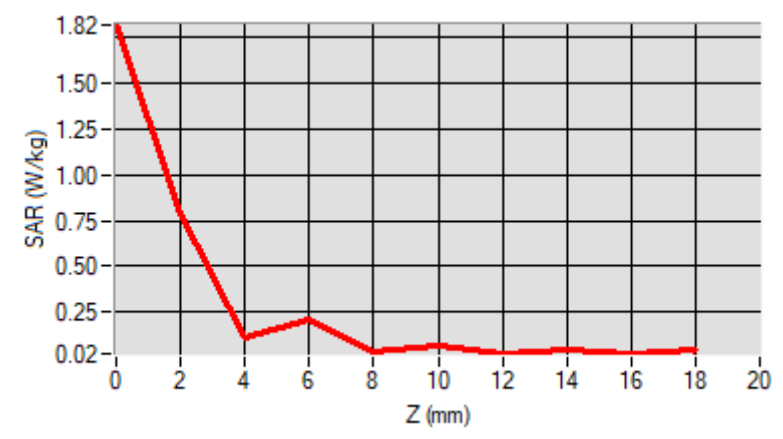
Maximum location: X=3.00, Y=0.00

D. SAR 1g & 10g

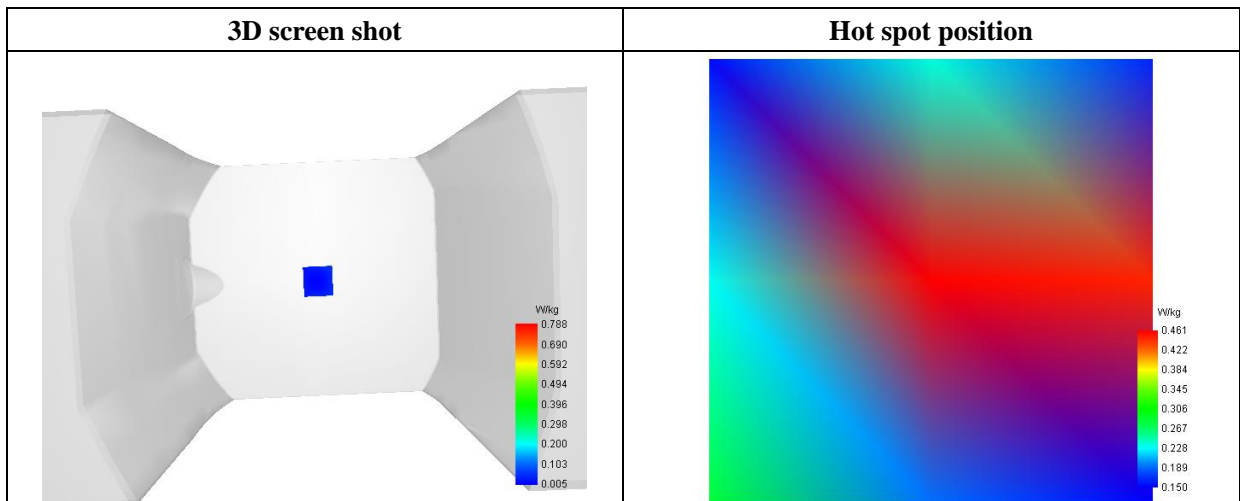
SAR 10g (W/Kg)	0.101645
SAR 1g (W/Kg)	0.363104

E. Z Axis Scan

Z (mm)	0.00	2.00	4.00	6.00	8.00	10.00	12.00	14.00	16.00	18.00
SAR (W/Kg)	1.8181	0.7883	0.1071	0.2125	0.0382	0.0639	0.0223	0.0395	0.0240	0.0240



F. 3D Image



MEASUREMENT 17

Type: Phone measurement (Complete)

Date of measurement: 2020-05-08

Measurement duration: 12 minutes 3 seconds

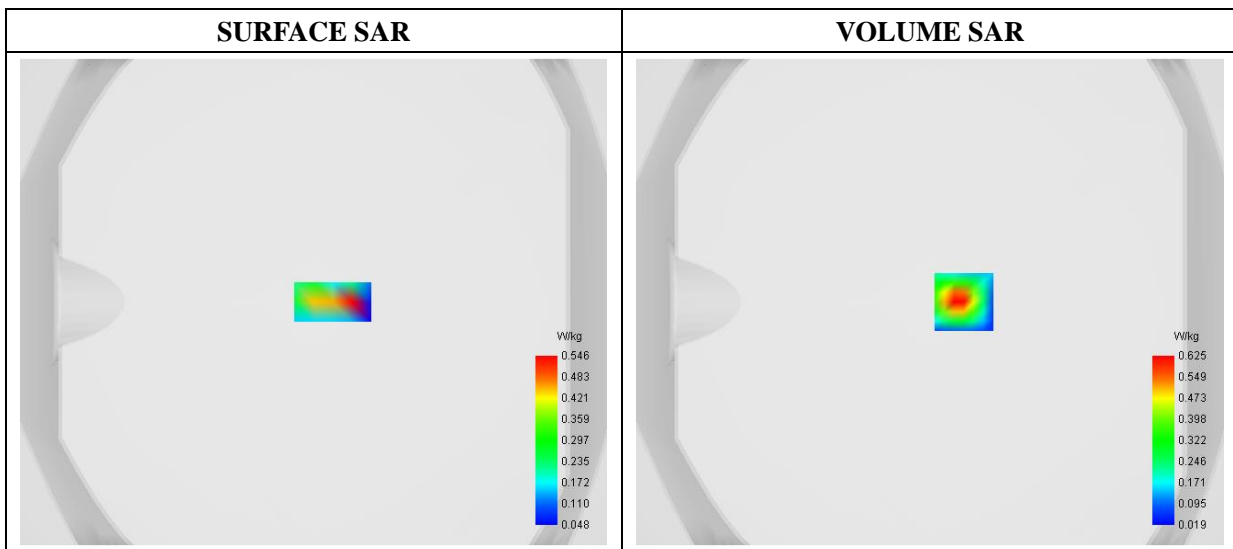
E-field Probe: SSE2 - SN 45/15 EPGO280; ConvF: Refer to the Calibration Certificate; Calibrated: 2019/07/08

A. Experimental conditions

Area Scan	dx=8mm dy=8mm
Zoom Scan	dx=4mm dy=4mm dz=2mm
Phantom	Flat Plane
Device Position	Back
Band	WiFi(5.8GHz)_802.11a
Channels	Low
Signal	Duty Cycle: 1:1

B. SAR Measurement Results

Frequency (MHz)	5745.000000
Relative Permittivity (real part)	35.620839
Conductivity (S/m)	35.301254
Power Variation (%)	5.210512
Ambient Temperature	22.0
Liquid Temperature	22.3



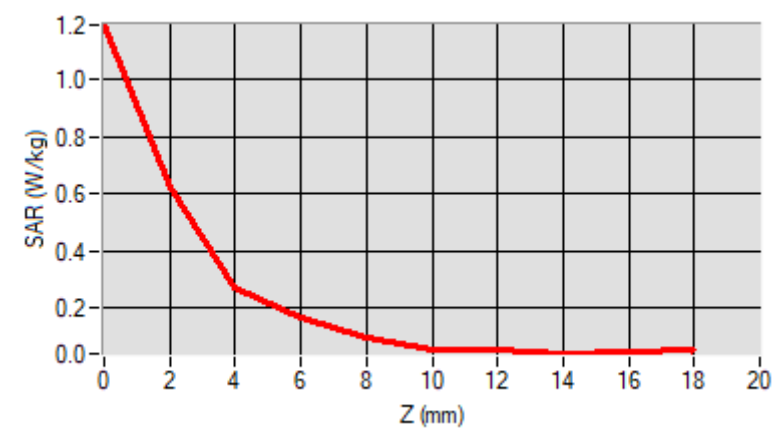
Maximum location: X=14.00, Y=0.00

D. SAR 1g & 10g

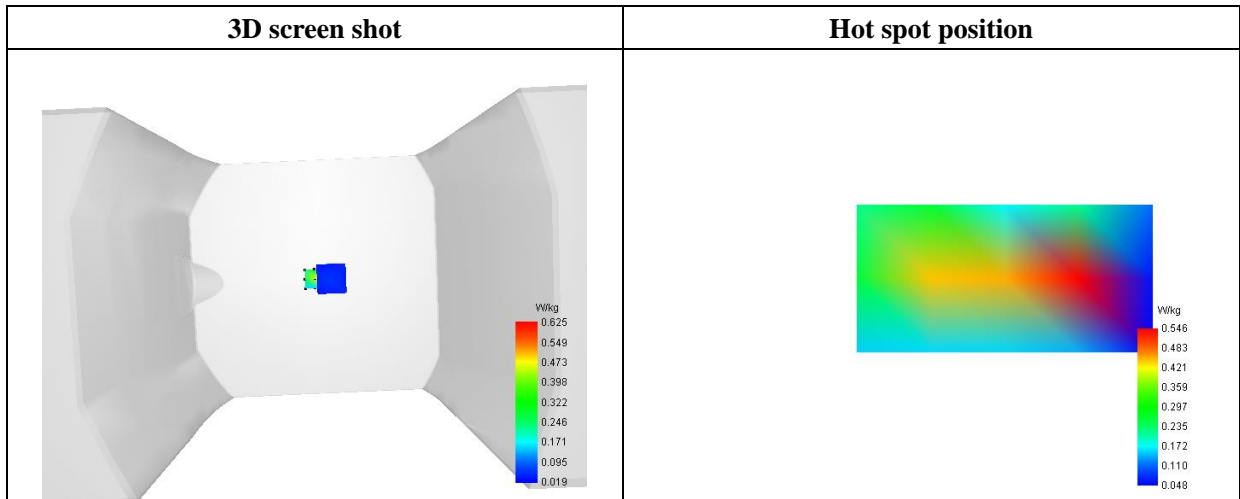
SAR 10g (W/Kg)	0.132231
SAR 1g (W/Kg)	0.371032

E. Z Axis Scan

Z (mm)	0.00	2.00	4.00	6.00	8.00	10.00	12.00	14.00	16.00	18.00
SAR (W/Kg)	1.1905	0.6246	0.2693	0.1684	0.0947	0.0548	0.0512	0.0406	0.0495	



F. 3D Image



MEASUREMENT 19

Type: Phone measurement (Complete)

Date of measurement: 2020-04-30

Measurement duration: 12 minutes 3 seconds

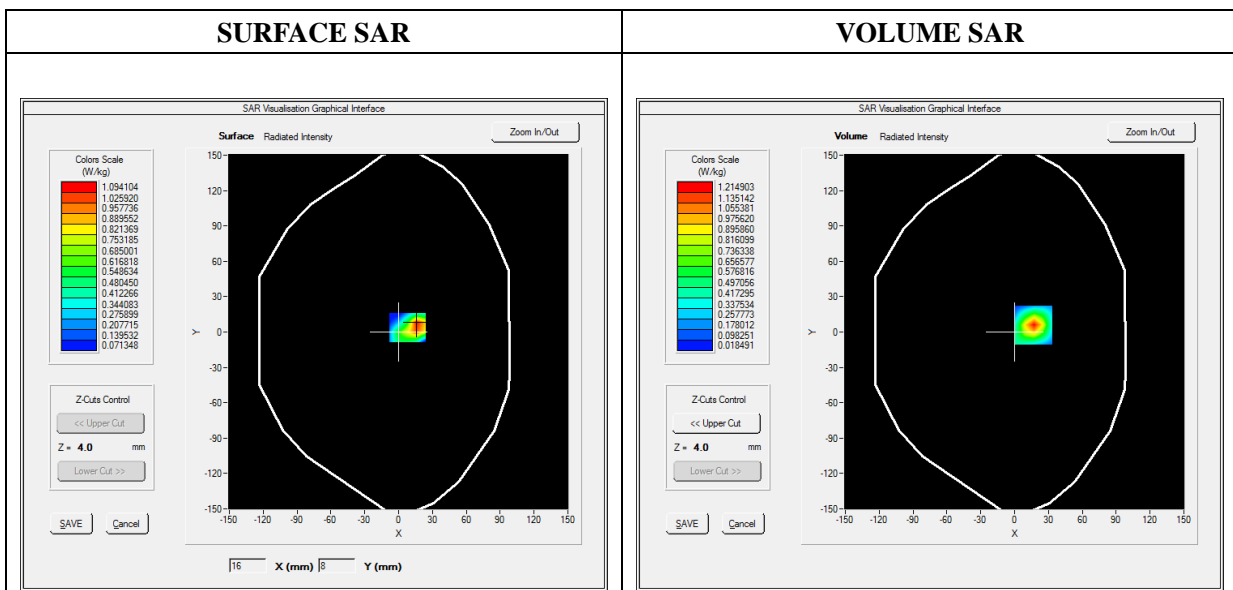
E-field Probe: SN 45/15 EPGO280; ConvF: 5.64; Calibrated: 2019-07-08

A. Experimental conditions

Area Scan	dx=8mm dy=8mm
Zoom Scan	dx=8mm dy=8mm dz=5mm
Phantom	Flat Plane
Device Position	Back
Band	WiFi_802.11n
Channels	Low
Signal	Duty Cycle 1:1

B. SAR Measurement Results

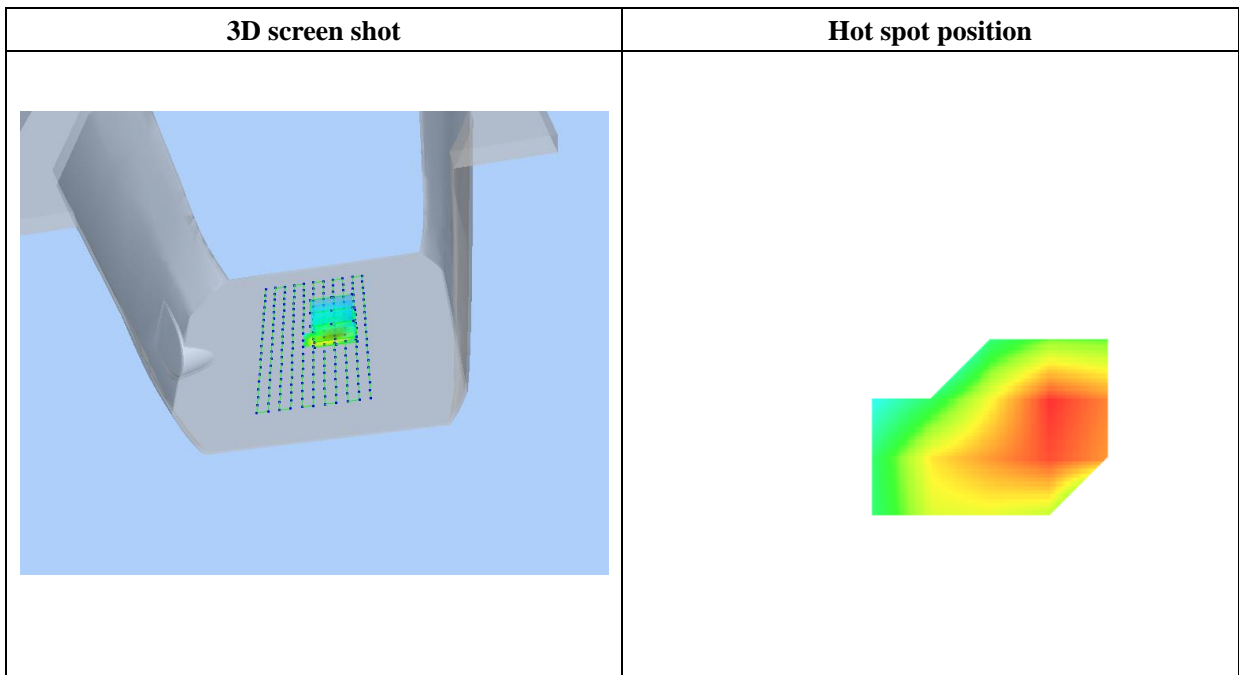
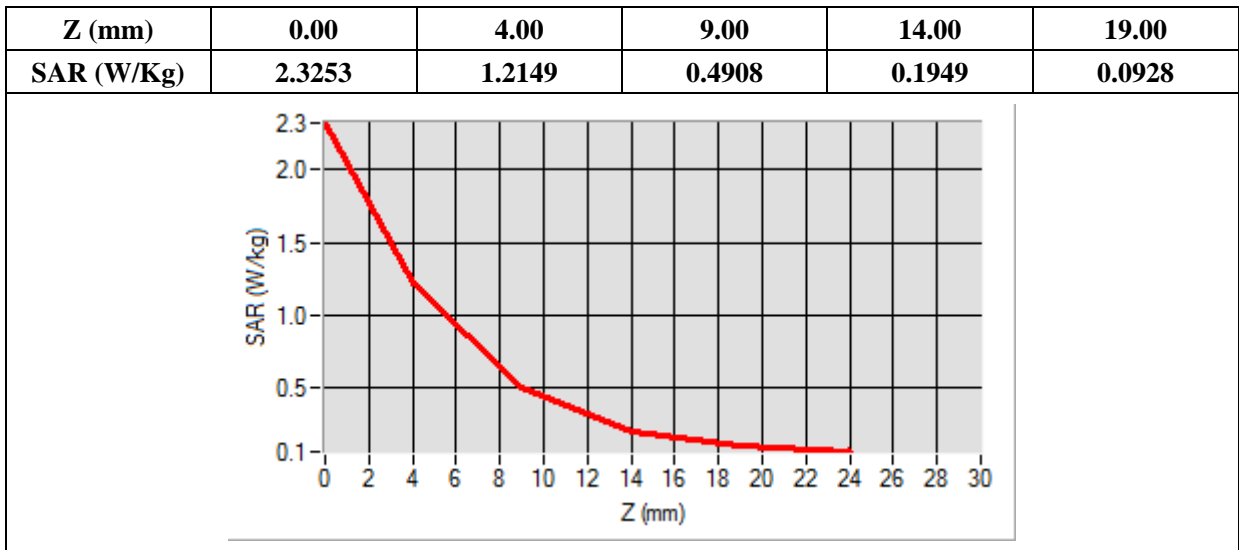
Frequency (MHz)	2422.000000
Relative Permittivity (real part)	52.010212
Conductivity (S/m)	1.910255
Power Variation (%)	2.403721
Ambient Temperature	21.1
Liquid Temperature	21.2



Maximum location: X=17.00, Y=6.00

SAR Peak: 2.32 W/kg

SAR 10g (W/Kg)	0.461382
SAR 1g (W/Kg)	1.098313



MEASUREMENT 20

Type: Phone measurement (Complete)

Date of measurement: 2020-05-06

Measurement duration: 12 minutes 3 seconds

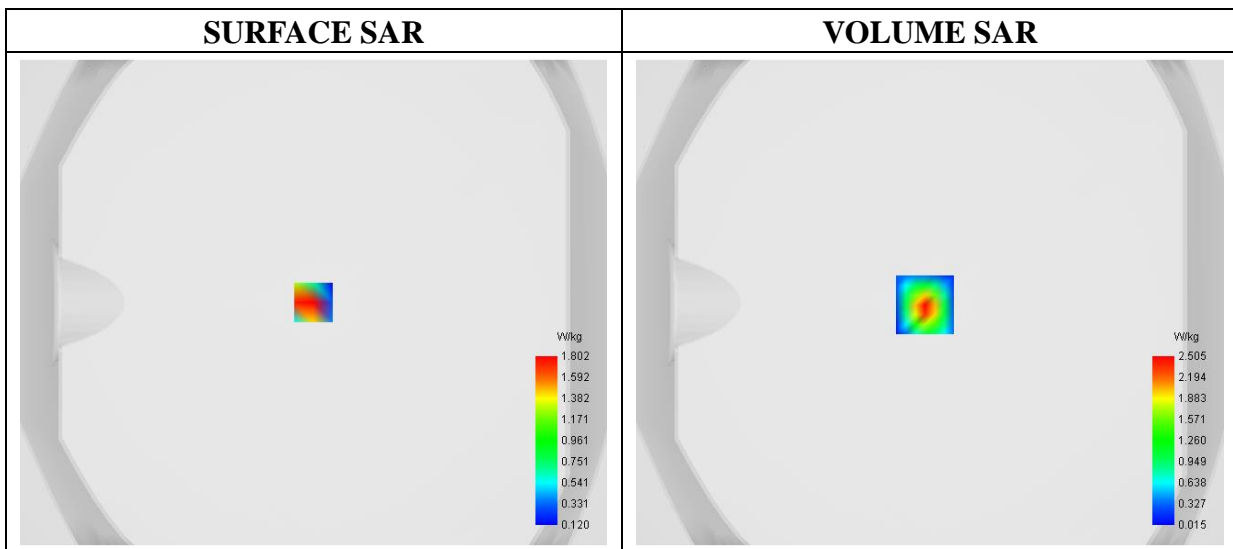
E-field Probe: SSE2 - SN 45/15 EPGO280; ConvF: Refer to the Calibration Certificate; Calibrated: 2019/07/08

A. Experimental conditions

Area Scan	sam_direct_droit2_surf8mm.txt
Phantom	Flat Plane
Device Position	Back
Band	WiFi(5.3GHz)_802.11a
Channels	Low
Signal	Duty Cycle: 1:1

B. SAR Measurement Results

Frequency (MHz)	5260.000000
Relative Permittivity (real part)	35.620839
Conductivity (S/m)	4.740192
Power Variation (%)	0.463782
Ambient Temperature	22.0
Liquid Temperature	22.3



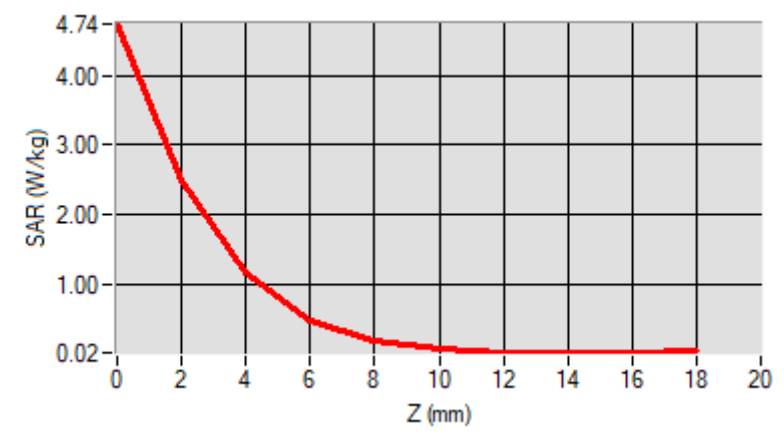
Maximum location: X=-2.00, Y=-1.00

D. SAR 1g & 10g

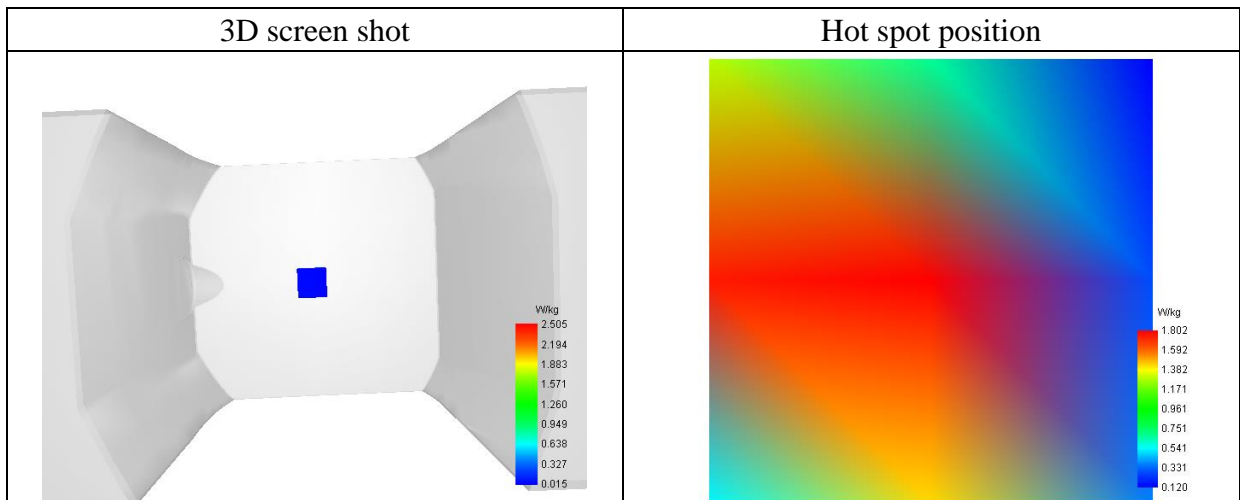
SAR 10g (W/Kg)	0.302219
SAR 1g (W/Kg)	1.248482

E. Z Axis Scan

Z (mm)	0.00	2.00	4.00	6.00	8.00	10.00	12.00	14.00	16.00
SAR (W/Kg)	4.7366	2.5050	1.1730	0.4858	0.1859	0.0705	0.0325	0.0240	0.0288



F. 3D Image

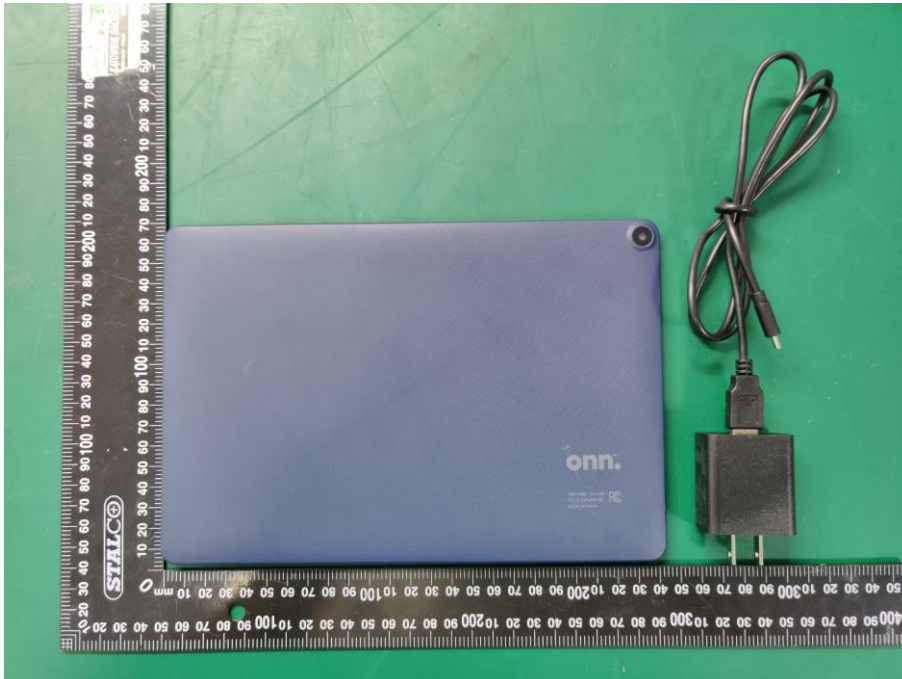


Annex C. EUT Photos

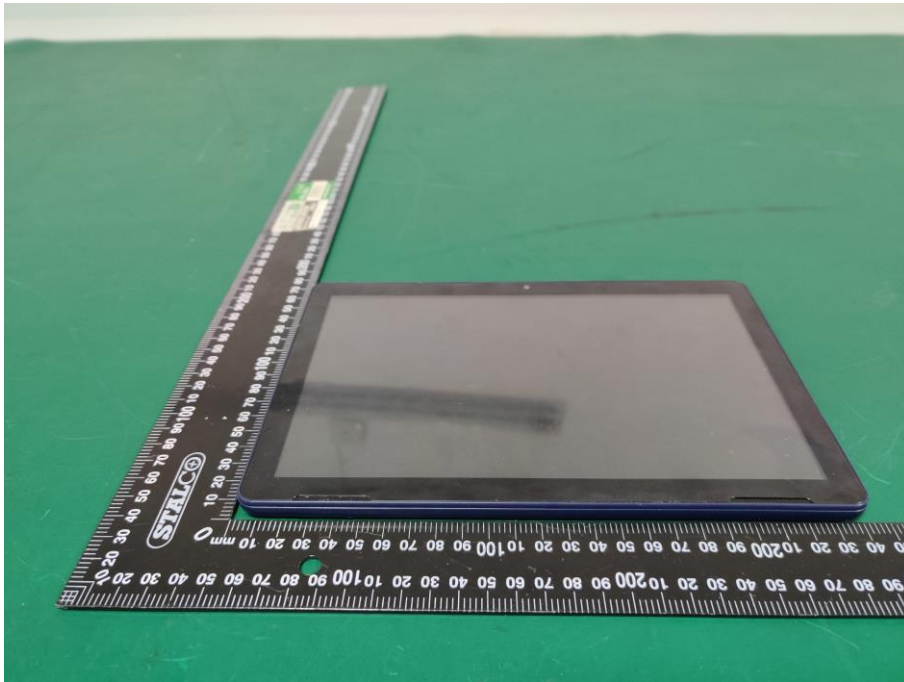
EUT View_1



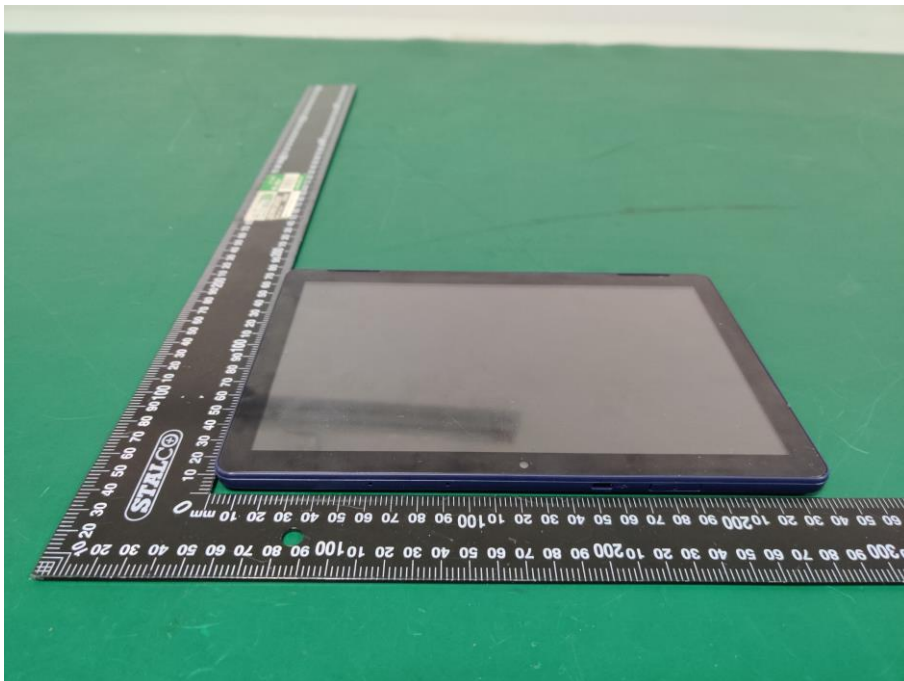
EUT View_2



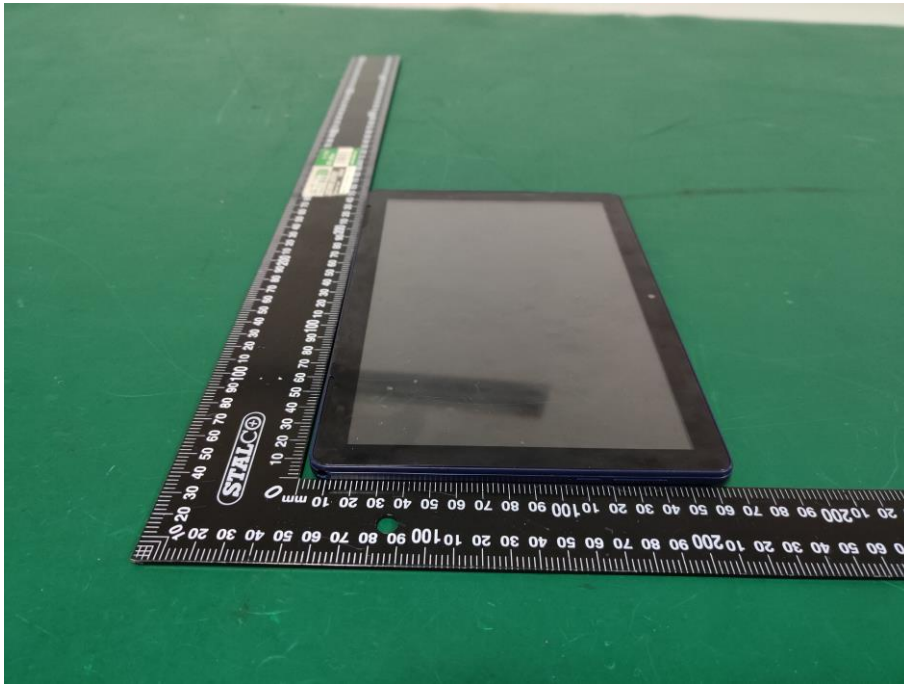
EUT View_3



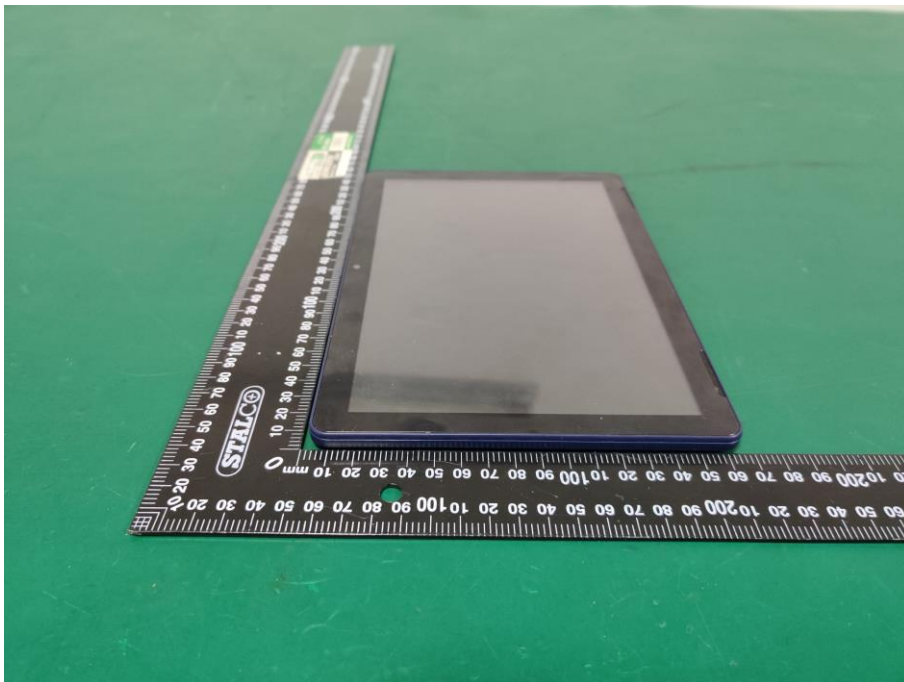
EUT View_4



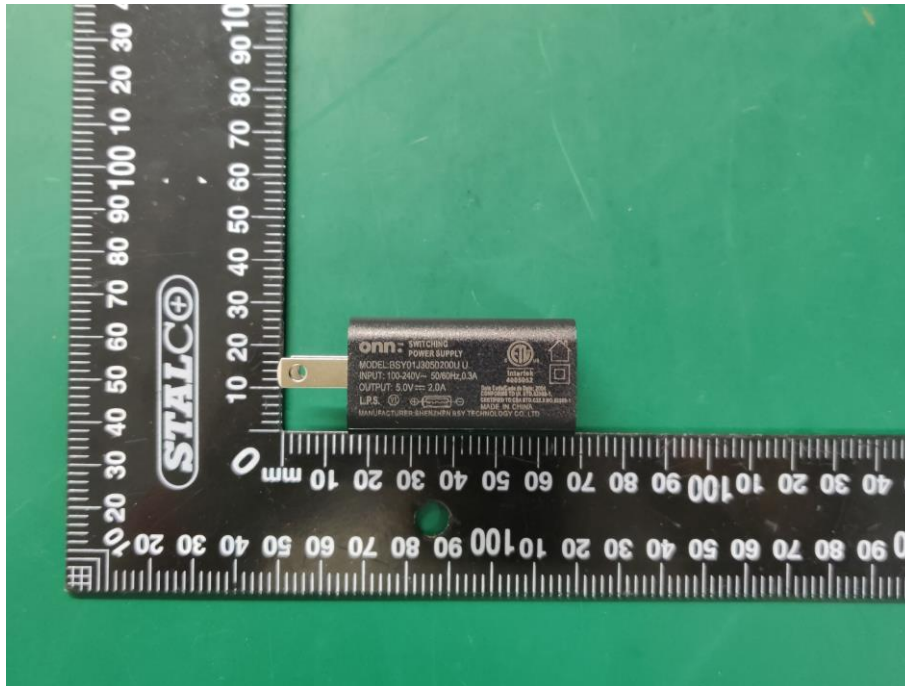
EUT View_5



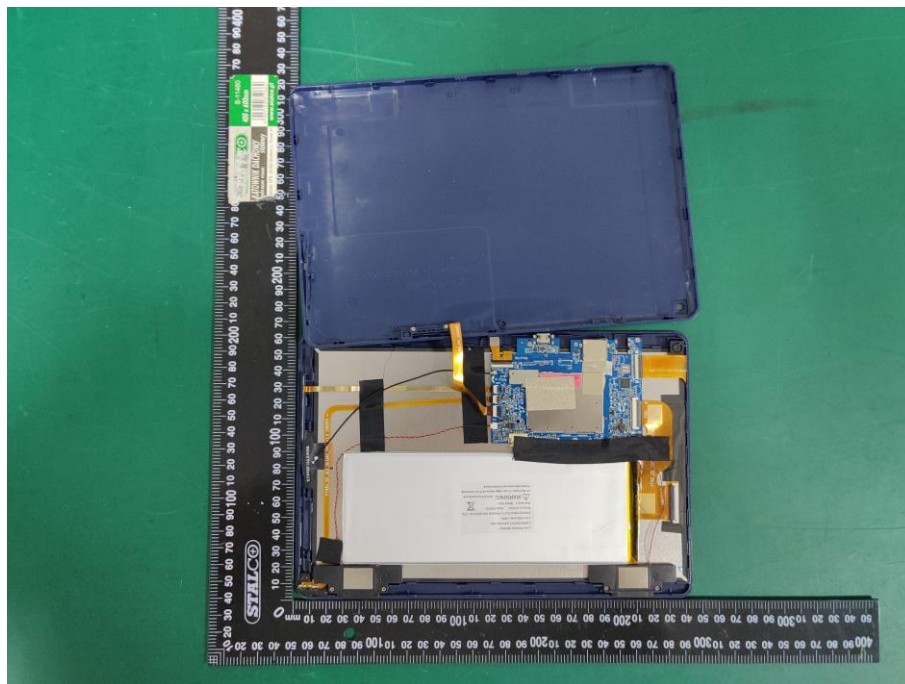
EUT View_6



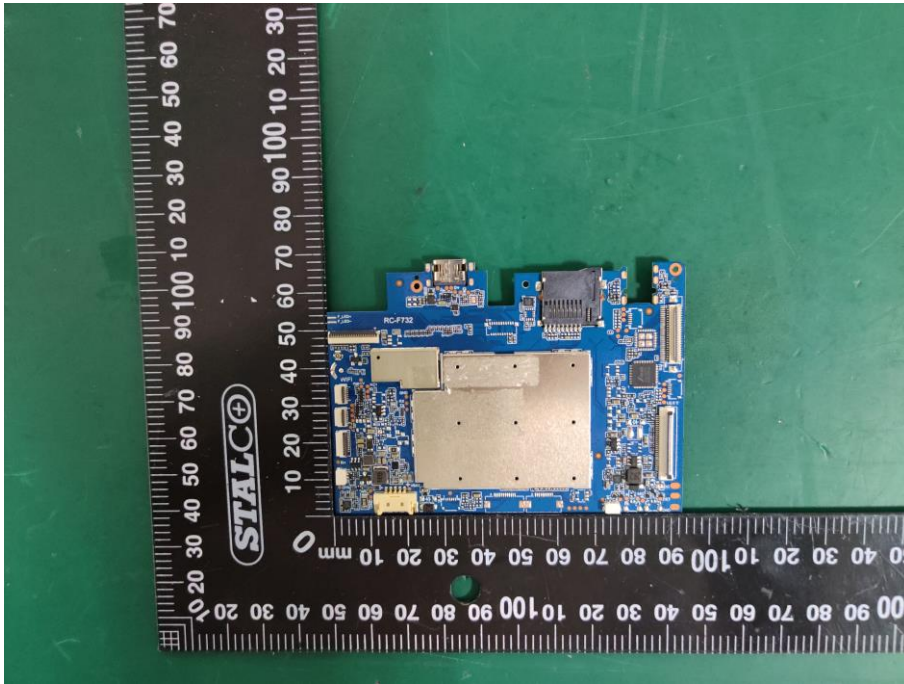
EUT View_7



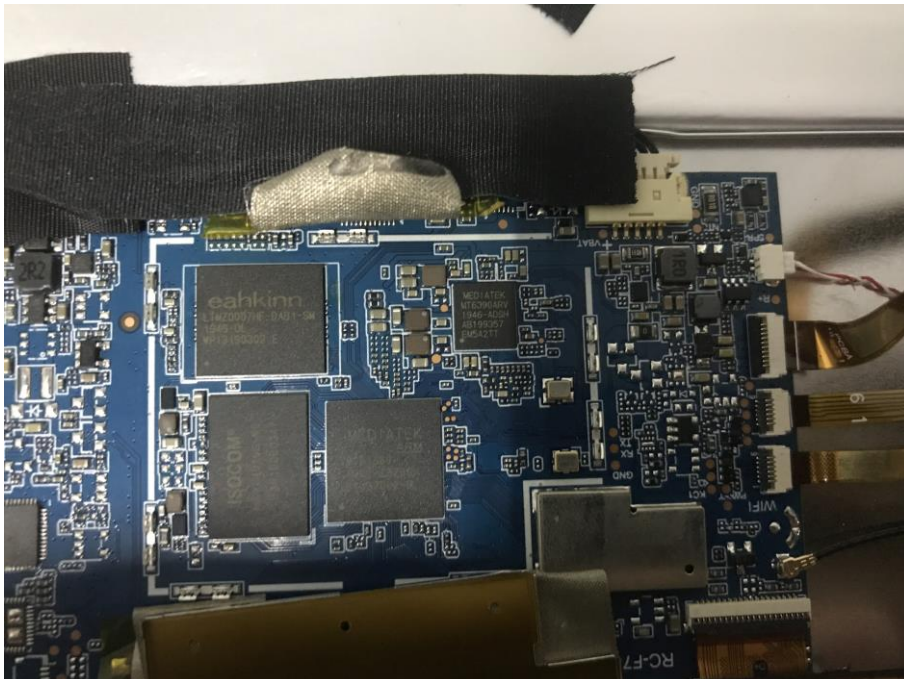
EUT Housing and Board View 1



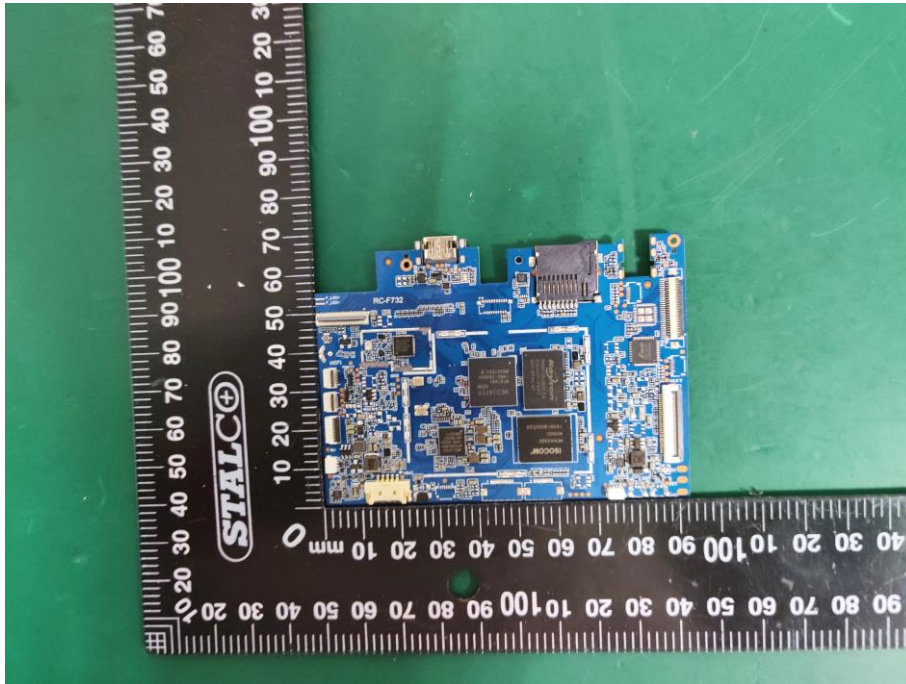
Solder Board-Component View 1



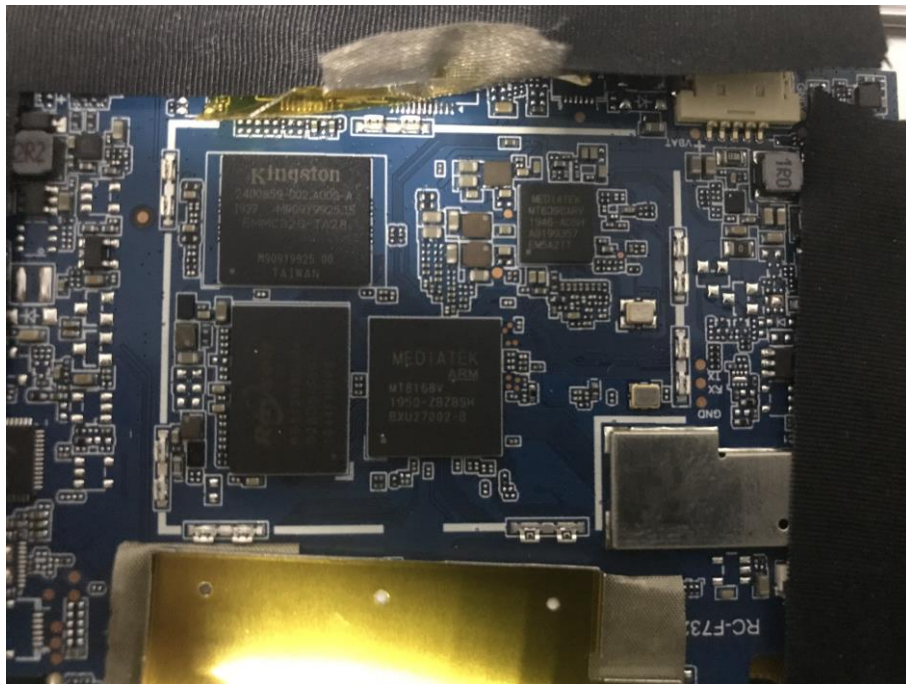
Solder Board-Component View 2



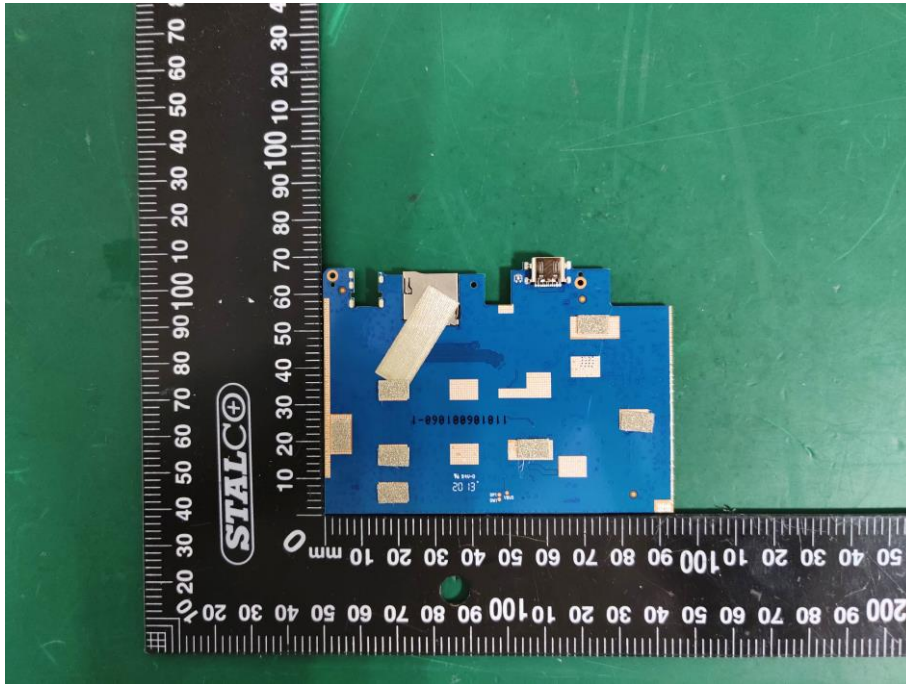
Solder Board-Component View 3



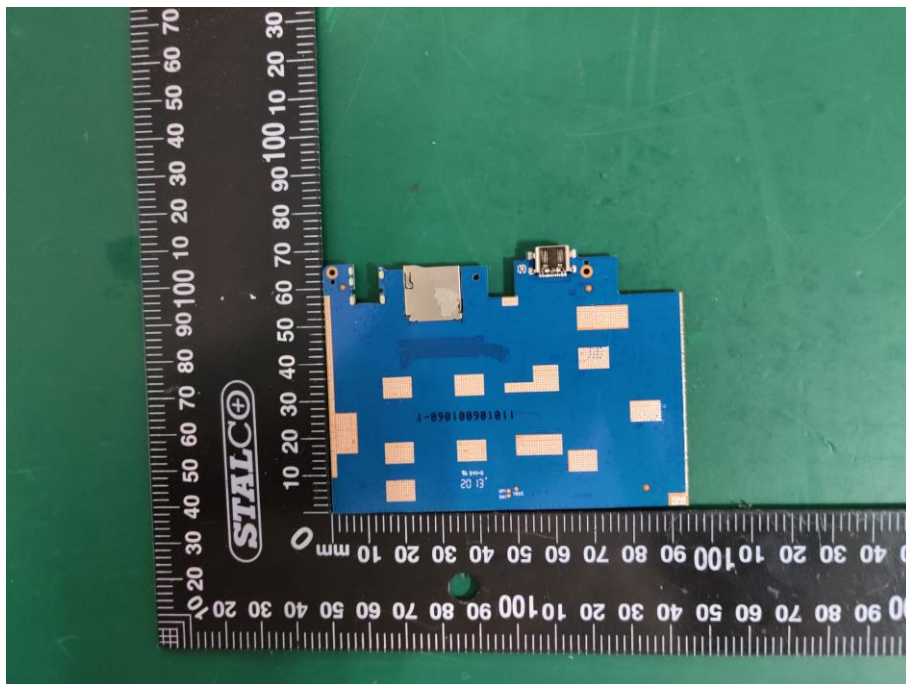
Solder Board-Component View 4



Solder Board-Component View 5



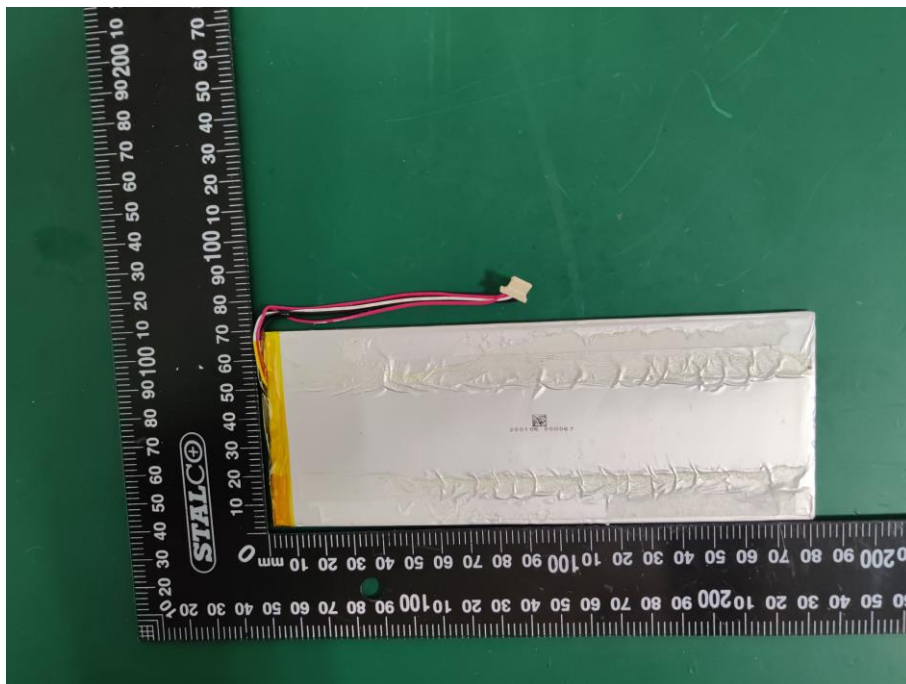
Solder Board-Component View 6



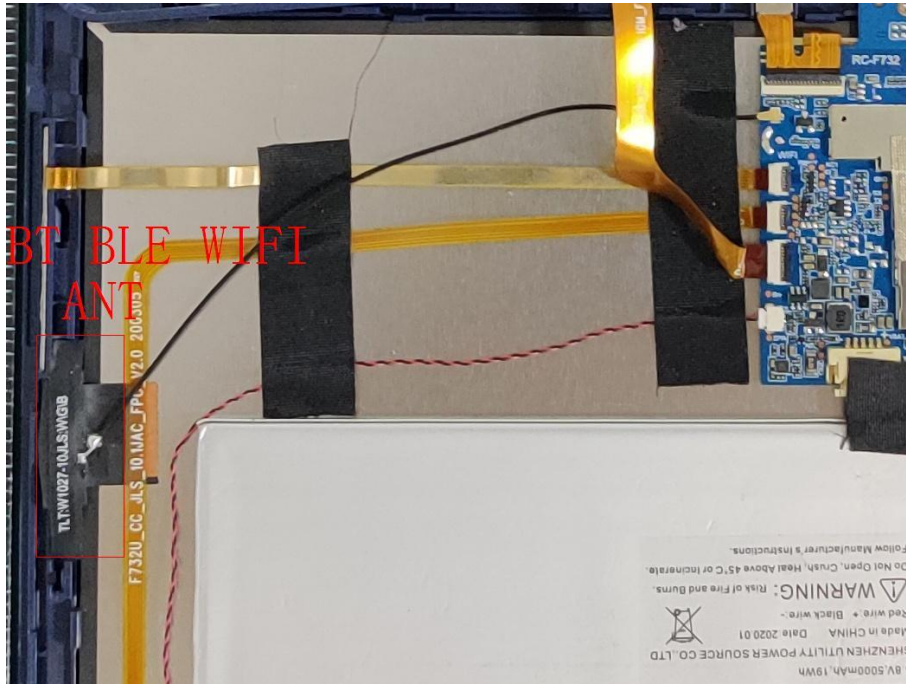
Solder Board-Component View 7



Solder Board-Component View 8



Antenna View 1



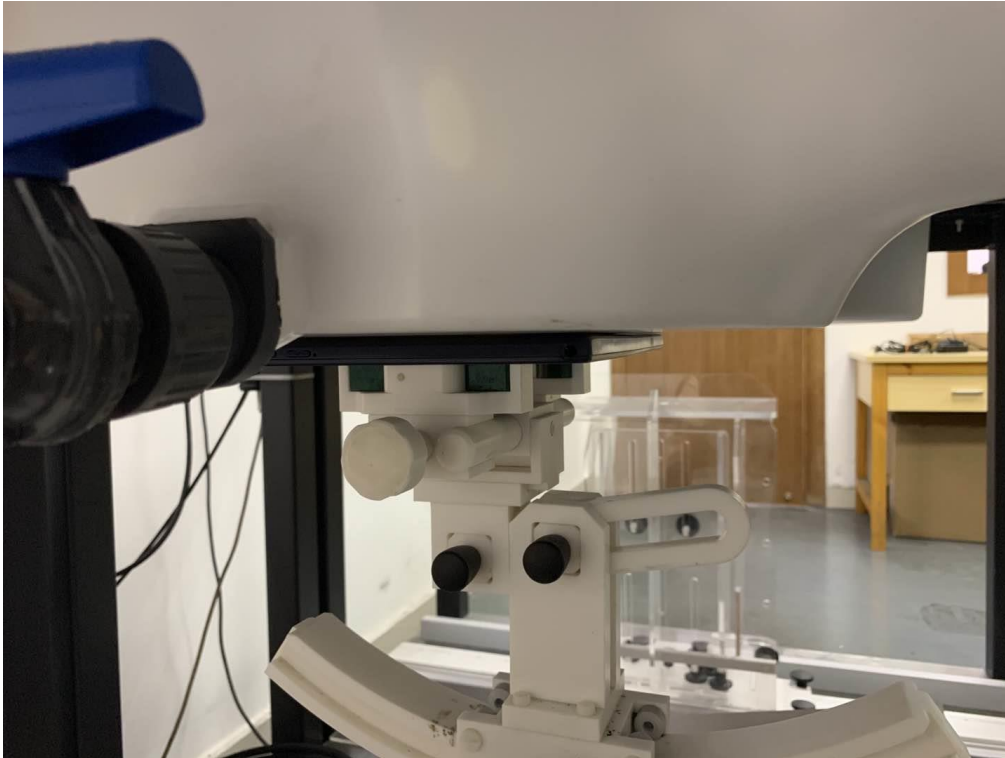
Antenna View 2



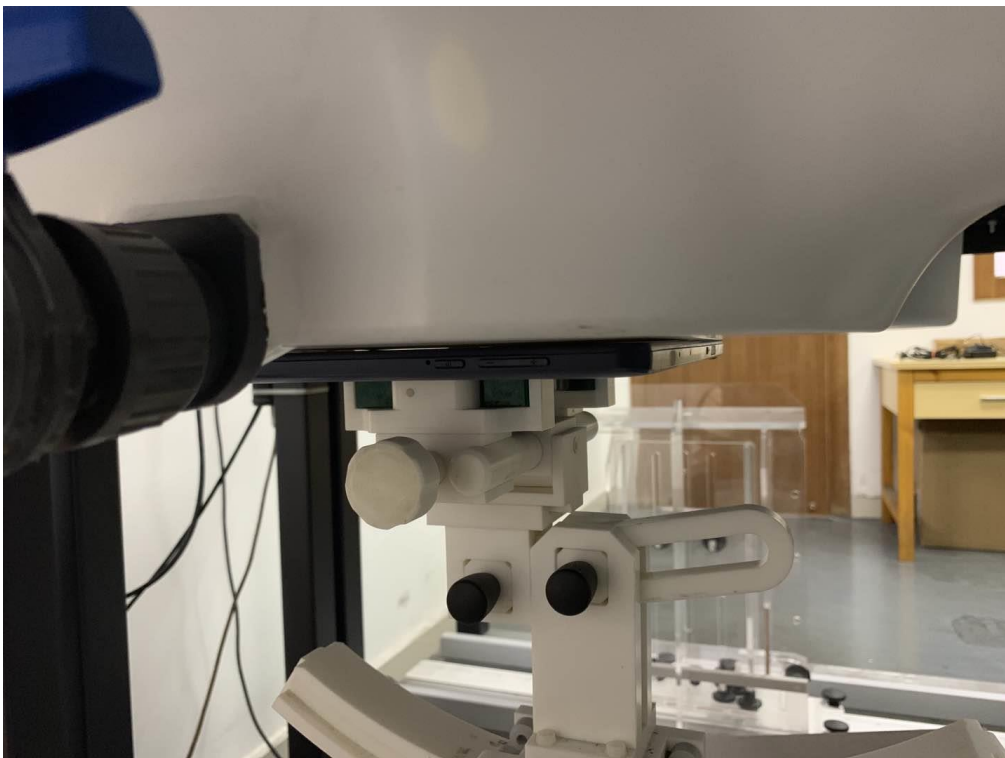
Annex D. Test Setup Photos

Test View

Body Back



Body Front



Body Right





Annex E. Calibration Certificate

Please refer to the exhibit for the calibration certificate

******* END OF REPORT *******