

# HyTronic® User Guide Installation Instructions

For single supply and dual supply HyTronic faucets

## Overview

Chicago Faucets deck mounted faucets feature cast brass bodies and precision cartridges for years of reliable operation. Metering models with adjustable cycle time offer true water savings.

## Notice to the Installer

- Make sure there is enough space and lighting available during installation and service
- Do not modify or convert this Chicago Faucets product yourself. All warranties will be voided.

Pressurized plumbing fixtures shall be installed in accordance with manufacturer's recommendations. The supply piping to these devices shall be securely anchored to the building structure to prevent installed device from unnecessary movement when operated by the user. Care shall be exercised when installing the device to prevent marring the exposed surface.

NOTE: The information in this manual is subject to change without notice.

Please leave this manual with the facility manager after completing the faucet installation. This document contains information necessary for routine maintenance and servicing.

NOTE: Before installation, turn off water supplies to existing faucet and remove faucet if replacing. Clean faucet basin and clear away debris. Flush all supply lines before connecting to faucet. Failure to do so can result in debris clogging the inlets and/or cartridges.

NOTE: Before installing a new ceramic cartridge flush lines completely.

## Safety Information

Read this entire user guide to ensure proper installation. Compliance and conformity to local codes and ordinances is the responsibility of the installer.

The following safety notes must always be complied with during handling of this product:

- FCC Caution: Any changes or modifications not expressly approved by the party responsible for compliance could void the user's authority to operate this equipment.
- Make sure there is enough space and lighting available during installation and service.
- Do not modify or convert this Chicago Faucets product yourself. All warranties will be voided.

## Internal Antenna Specifications

- Peak Gain of the antenna: -5.47 dBi
- Frequency range: 2400-2500 MHz
- FCC ID: 2APT-X-CFC01

## Important

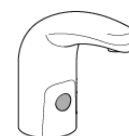
- Installation may be performed at different times of construction by different individuals. For this reason, these instructions should be left on-site with the facility or maintenance manager.
- Pressurized plumbing fixtures shall be installed in accordance with manufacturer's recommendations. The supply piping to these devices shall be securely anchored to the building structure to prevent installed device from unnecessary movement when operated by the user. Care shall be exercised when installing the device to prevent marring the exposed significant surface.
- Do not use pipe dope.
- Flush all the water supply lines before making connections.

This faucet comes with all the components needed for installation, however, some tools and supplies are not included.

- |                             |                          |
|-----------------------------|--------------------------|
| • Basin Wrench              | • Plumber's Putty        |
| • Adjustable Wrench         | • Hex Key (supplied)     |
| • Adjustable Locking Pliers | • Aerator Key (supplied) |

NOTE: Do not use pipe dope on faucet and supply connections.

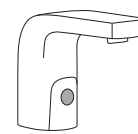
Possible solenoid contamination could occur and will void any warranty.



Traditional  
Lavatory



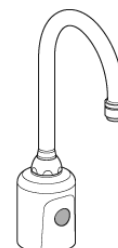
Contemporary  
Lavatory



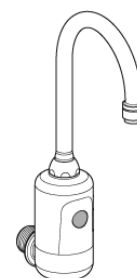
Edge



Curve



Gooseneck



Wall Mount

This equipment has been tested and found to comply with the limits for a Class B digital device, pursuant to Part 15 of the FCC Rules. These limits are designed to provide reasonable protection against harmful interference in a residential installation. This equipment generates uses and can radiate radio frequency energy and, if not installed and used in accordance with the instructions, may cause harmful interference to radio communications. However, there is no guarantee that interference will not occur in a particular installation. If this equipment does cause harmful interference to radio or television reception, which can be determined by turning the equipment off and on, the user is encouraged to try to correct the interference by one of the following measures:

- Reorient or relocate the receiving antenna.
- Increase the separation between the equipment and receiver.
- Connect the equipment into an outlet on a circuit different from that to which the receiver is connected.
- Consult the dealer or an experienced radio/TV technician for help.

This device complies with Part 15 of the FCC Rules. Operation is subject to the following two conditions: (1) This device may not cause harmful interference, and (2) this device must accept any interference received, including interference that may cause undesired operation.

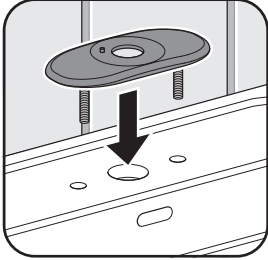
## Mounting of Lavatory and Gooseneck Faucet

### Prerequisites

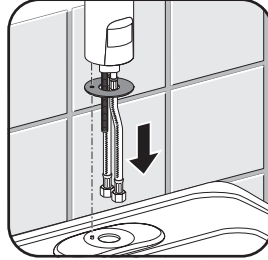
- Supply valve is installed
- Water supply lines are flushed properly
- For AC and faucets with EBPS, power outlet is installed

### Important

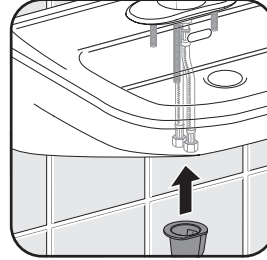
- It is not necessary to unscrew the connection between braided hose and housing to install the product.
- Do not remove protective covering from sensor until starting up faucet operation.
- Do not tighten locknut before step 4 is completed.



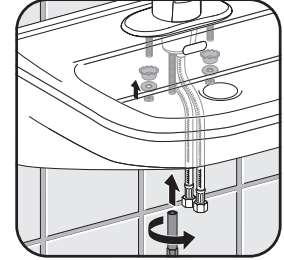
1. Mount cover plate if required. Plumber's putty is recommended to seal cover plate to the sink. Security pin must be located on the left side.



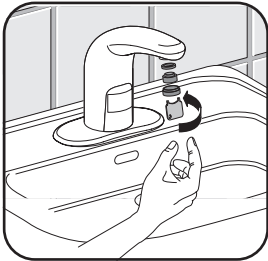
2. Mount gasket and put faucet into sink.



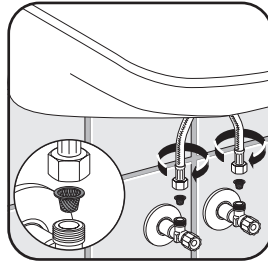
3. Mount bracket from underneath. Place hoses through large opening and mounting rod through small opening. Make sure flange sits securely against surface.



4. Place nut onto mounting rod and tighten with wrench.  
5. If faucet was installed with cover plate, secure with basin washer, flat washer and locknut.



6. Install aerator and tighten with aerator key (supplied).



8. Connect braided hose with filter to supply valve.

9. Connect to power supply.

The faucet is now mounted.

7. For Gooseneck faucets, tighten spout with wrench.

Cold water > white label  
Hot water > no label

Note: For AC faucets and faucets with EBPS, please refer to the plugin or hardwired transformer installation instructions.

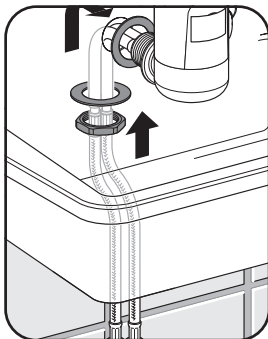
## Mounting of Wall Mount Faucet

### Prerequisites

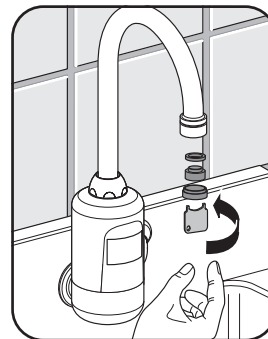
- Supply valve is installed
- Water supply lines are flushed properly
- For AC faucets and faucets with EBPS power outlet is installed

### Important

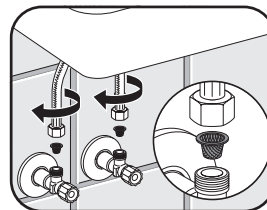
- It is not necessary to unscrew the connection between braided hose and housing to install the product.
- Do not remove protective covering from sensor until starting up faucet operation.



1. Mount gasket, put faucet into opening and tighten



3. For gooseneck faucets, tighten spout with wrench



4. Connect braided hose with filter to supply valve

Cold water > white label  
Hot water > no label

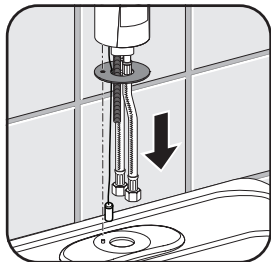
For AC faucets and faucets with EBPS, please refer to the plugin or hardwired transformer installation instructions.

5. Connect to power supply

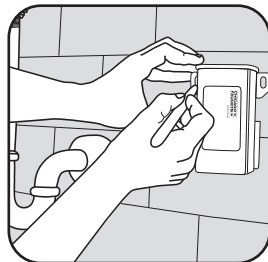
The Wall Mount faucet is now mounted.

### Mounting of Long Term Power System (LTPS) Pack (LTPS Models Only)

The LTPS Power Pack comes with mounting hardware (screws and anchors). You will need a drill and Phillips screwdriver to complete the installation.



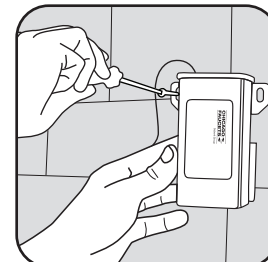
1. Mount faucet by following the standard mounting instructions on page 2.



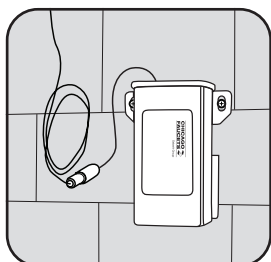
2. Position LTPS unit on wall and mark mounting holes on mounting surface.



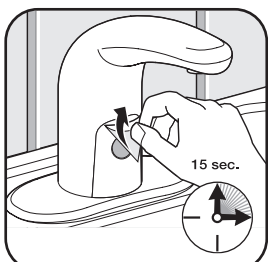
3. Drill holes for screw anchors.



4. Insert anchors into holes and mount LTPS unit to wall with supplied screws.



5. Connect spout wire to LTPS connector wire, making sure connectors are oriented correctly.



6. Remove protective covering from sensor.  
Wait 15 seconds for faucet to calibrate to its environment.

#### **LTPS End of Life Directives:**

In an effort to produce environmentally conscious products, the LTPS contains materials that are required be recycled by specialized companies. Please ensure you dispose of your LTPS according to local regulations. Follow applicable laws and regulations for transport, shipping, and disposal of batteries. For details on, and locations for recycling lithium-based batteries, please contact a government recycling agency, your waste-disposal service, or visit reputable online recycling sources such as [www.call2recycle.org](http://www.call2recycle.org).

# HyTronic® User Guide Installation Instructions

(continued)

**CHICAGO  
FAUCETS®**

Geberit Group

## Mounting of SSPS Generator

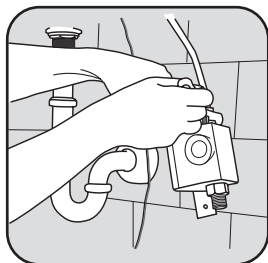
The SSPS Generator comes with all the components needed for installation, however, some tools and supplies are not included.

- Basin Wrench
- Adjustable Wrench
- Hand Drill
- Adjustable Locking Pliers

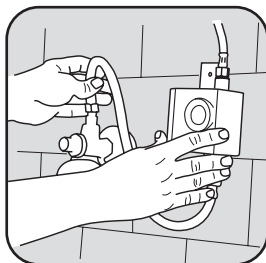
### Includes

- SSPS Generator Unit
- Electronics Module and Holder
- Green Power Adapter
- Hose

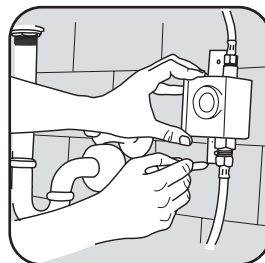
**IMPORTANT:** Do not use pipe dope on faucet and supply connections. Possible solenoid contamination could occur and will void any warranty.



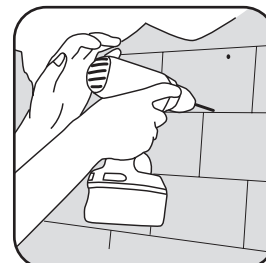
1. Connect SSPS unit. Attach to faucet and install water supply line.



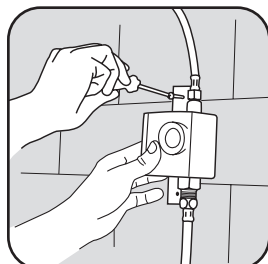
2. Position SSPS under sink. Carefully position to allow connection of water lines and wiring.



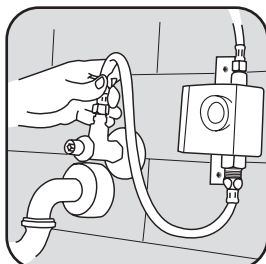
3. Mark holes. Position mounting bracket and mark mounting holes.



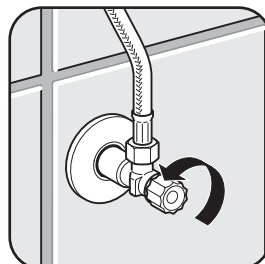
4. Drill holes. Drill holes for screw anchors.



5. Secure SSPS to wall. Insert anchors into holes and mount SSPS unit to wall with supplied screws.



6. Attach inlet hose to supply and turn on water. With water on, check system for leaks.\*

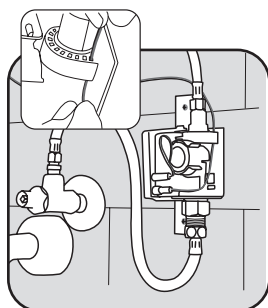


7. Fully open supply valve.

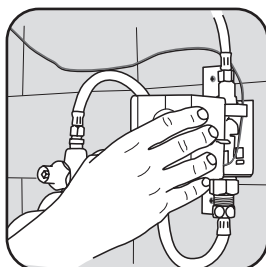


8. Remove all items from sink.

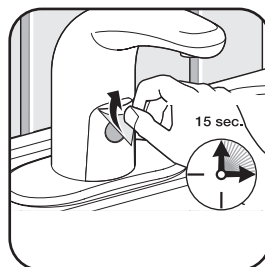
\*For dual-supply SSPS models, connect the hot water supply line to the SSPS unit and the cold water supply line directly to the faucet.



9. Remove cover and connect faucet wire to SSPS and secure into wire harness.



10. Attach the cover. Faucet is ready to run through programming sequence.



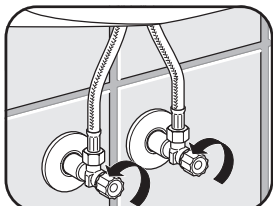
11. Remove protective covering from sensor.  
Wait for 15 seconds for faucet to calibrate to its environment.

### Start-up Operation

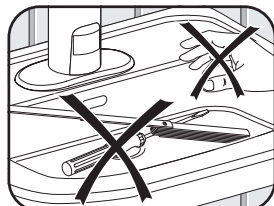
A traditional lavatory faucet is shown as an example. The start-up operation applies to all models.

#### Prerequisites

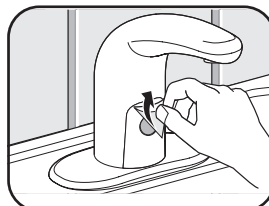
- Faucet is mounted
- Water supply is on
- Water supply lines are flushed properly
- For AC faucets and faucets with EBPS, power outlet is installed



1. Fully open supply valves



2. Remove all items from sink



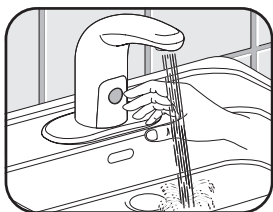
3. Remove protective covering from sensor



4. Wait for 15 seconds for faucet to calibrate to its environment  
The faucet is now activated.

### Test Function

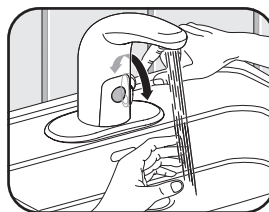
NOTE: If the faucet does not work as described below, see "Troubleshooting" section.



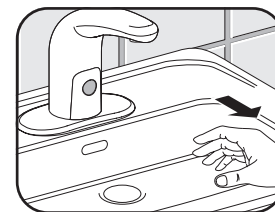
1. Hold hand in front of sensor until water begins to flow.



**WARNING:** Hot water may burn your skin. Avoid contact with the water stream until the water temperature has been properly adjusted. See page 5 for instructions on adjusting water temperature.



2. For faucets with external mixer, turn mixer handle from cold to warm. You should feel the water temperature increase.

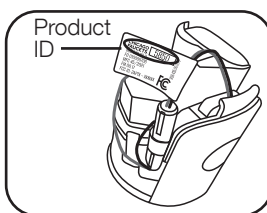


3. Move hand away from sensor until water flow stops.

### Adjustments and Mode Settings

Built-in Bluetooth® technology allows for easy adjustments and mode changes using a smartphone or tablet with our CF Connect App.

- Install the CF Connect App on your phone or tablet
- Once registered, follow the prompts to make adjustments to your faucet
- You will need the faucet ID number which can be found on the label included with the electronics module



Look for the product ID number on the label included with the electronics module.