

# VIVITAR®

CREATOR SERIES

## *Smartphone Stabilizer*

***Pan and Tilt Controls with 3-Axis Stabilization***



Bluetooth  
Shutter



Built-in  
Battery



Universal  
Cradle



Tripod  
Mount



***User's Manual***

Item: VGIMPRO3

## Safety Precautions

Before setting up and using smartphone stabilizer, basic safety precautions should always be followed including:

1. READ ALL INSTRUCTIONS BEFORE USING YOUR STABILIZER.
2. This product is not a toy, do not allow children to play with it. Adult supervision is advised.
3. This product should not be exposed to extreme heat or fire. Do not store in a location with temperatures above 104°F.
4. Do not expose this product to any water, liquids, or excessive humidity.
5. Do not crush, throw or subject this product to extreme physical force.
6. Do not use this product if it appears to be cracked or broken.
7. Do not use in wet or humid environments.
8. Always fold down your stabilizer when traveling or transporting it.
9. Make sure that there is no physical blockage of the motors before powering on and using.
10. If you detect that your stabilizer starts to become hot after extended use, power it off and wait until it cools before you continue using it.
11. Please recycle or dispose of the product properly based on the laws and rules of your municipality. Contact local recycling facilities and/or the manufacturer of the product for further information.
12. In order to avoid the risk of electric shock, never attempt to open your capture card or repair it without the assistance of certified professionals.

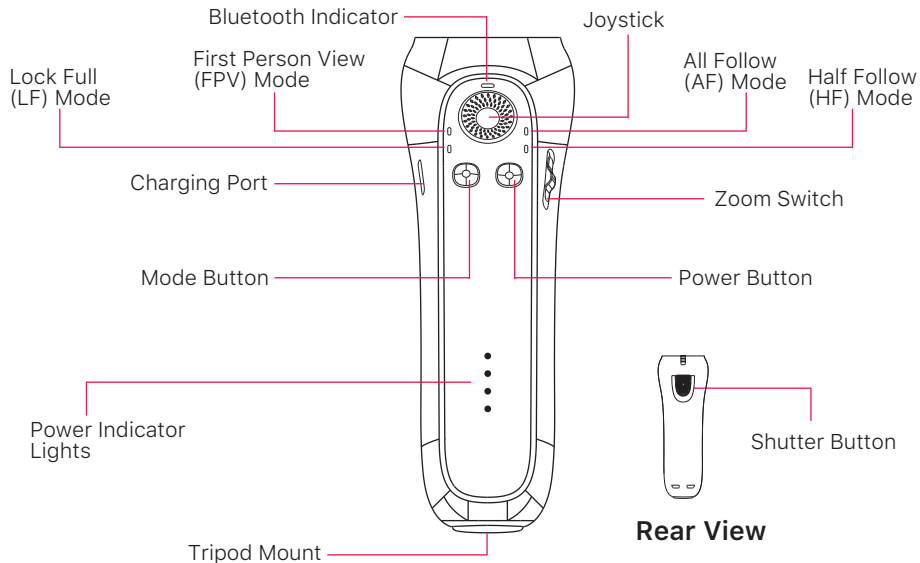
## Introduction

Thank you for purchasing the Vivitar Smartphone Stabilizer, item VGIMPRO3. Your stabilizer has pan and tilt controls with 3-axis stabilization. Please read this manual carefully before setting up and using the stabilizer.

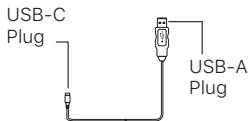
## Package Contents

- Smartphone Gimbal
- Mini Tripod
- USB-A to USB-C Cable
- Fabric Wrist Strap

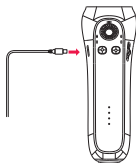
## A Quick Look



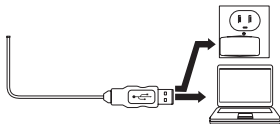
# Charging



1. The included USB-C charging cable has a USB-C plug and a standard USB-A plug.



2. Insert the USB charging cable's USB-C plug into the charging port on your stabilizer.



3. Insert the USB charging cable's standard USB-A plug into a suitable USB charging adapter. For best results, use a 2A/5V charging adapter.

- 25% Charged
- 50% Charged
- 75% Charged
- 100% Charged

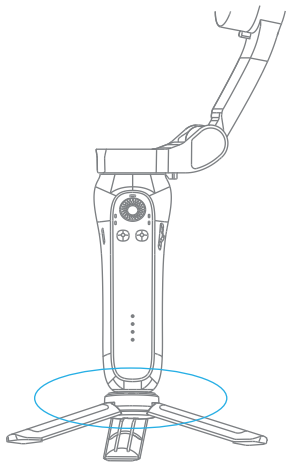


4. The Power Indicator Lights will illuminate to indicate the charging status. Each light will stay lit to indicate that the battery is approximately 25% closer to being fully charged. When the battery is fully charged, each of the LED Indicator Lights will remain illuminated. Unplug when charging is complete.

## Attaching a Tripod

Included with your stabilizer is a mini tripod.

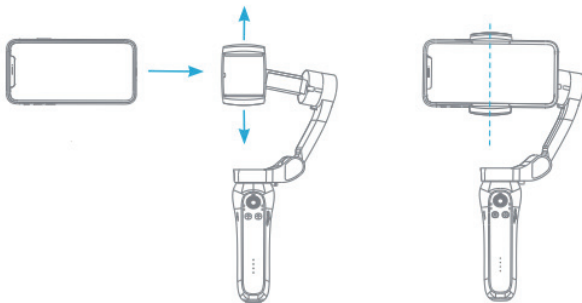
To attach your stabilizer to the tripod, simply screw the tripod into the stabilizer's tripod mount.



## Inserting a Phone

Before inserting a phone into the stabilizer's cradle, first take off your phone's case, specifically if your phone has a thicker case.

Extend the arms of the cradle and then insert your phone so that the screen is positioned horizontally with the phone's camera to the left. Try to have the phone in the center of the cradle, making sure that the arms hold it securely.



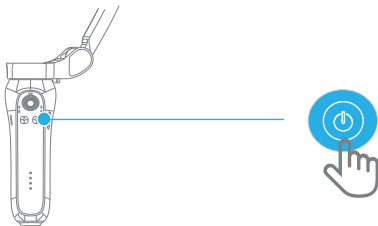
**NOTE:** Your stabilizer can be powered on and used even if your smartphone is not inserted. This allows you to remove your phone at anytime, for example when you receive a phone call.

## Power Button

To power on your stabilizer press and hold the power button for approximately 2-3 seconds.

Once powered on, tap the power button to switch between horizontal and vertical mode. If the stabilizer gets stuck at any time, you can press the power button as well.

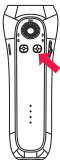
To power off your stabilizer, press and hold the power button for approximately 2-3 seconds.



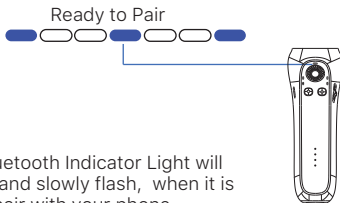


# Bluetooth Pairing

1. Press the power button for approximately 2-3 seconds to power on your stabilizer.



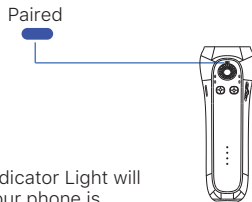
2. The Bluetooth Indicator Light will turn blue and slowly flash, when it is ready to pair with your phone.



3. Go to your phone's Bluetooth settings menu. Make sure that Bluetooth is turned on. Connect to the device listed as "GP7-XX".



4. The Bluetooth Indicator Light will remain blue once your phone is paired with your stabilizer.



## Taking Photos/Videos

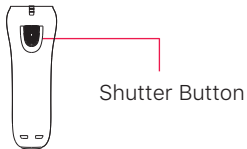
Once your stabilizer is paired with your phone, you can press the shutter button on your stabilizer and your phone will record videos or take pictures.

Make sure that your phone's camera application is open.

When your phone's camera is in photo mode, press the shutter button to take a photo. If you hold down the shutter button, results may vary depending on the type of phone you have. On some phones, video will record while the shutter is being held, and then stop recording when the shutter is released. On other phones, when you hold down the shutter button, the camera will continuously shoot photographs until the shutter button is released.

When your phone's camera is in video mode, press the shutter button to start recording video. Press it again to stop recording.

NOTE: Functionality may vary on different model phones.

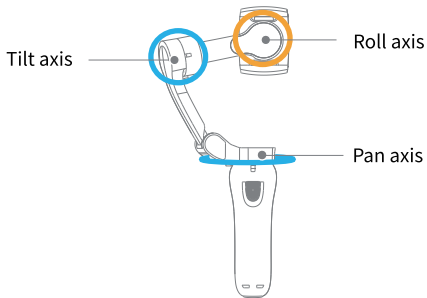


## Changing Modes

Your stabilizer has 4 different modes. Press the Mode button on your stabilizer to toggle between modes.

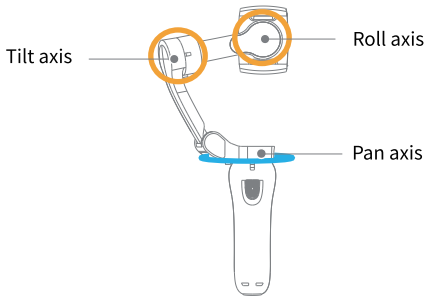
### *All Follow (AF) Mode*

In all follow mode, the roll axis is locked, while the pan (left/right) and tilt (up/down) axes will follow the movement of the handle.



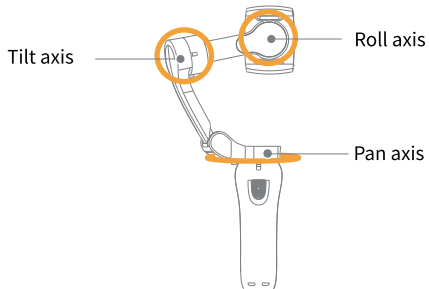
### *Half Follow (HF) Mode*

In half follow mode, the tilt and roll axes are locked. The pan axis rotates left and right smoothly with the handle. This is the default mode.



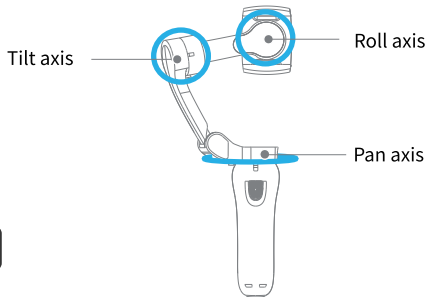
### ***Lock Full (LF) Mode***

In Lock Full Mode, the pan, tilt and roll axes are all locked. The phone remains stable and cannot follow the movement of the handle.



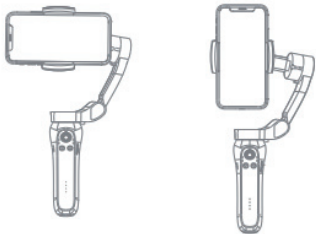
### ***First Person View (FPV) Mode***

The pan, tilt and roll axes follow the movement of the handle.



## Holding Your Stabilizer

When recording video or taking photos, there are different ways to hold your stabilizer.



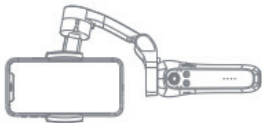
### ***Work Style***

A fairly standard way to hold your stabilizer, work style can be used with your phone in both landscape or portrait mode.



### ***Underslung Style***

Underslung style involves holding the stabilizer upside down in order to capture images from low angles.



### ***Side Grip Style***

Rotate the stabilizer to the right or left by 90 degrees. Side grip style can be used with your phone in both landscape or portrait mode.

## Additional Functions

### ***Reset***

Press and hold the shutter button and power button at the same time to reset the Bluetooth name, causing your stabilizer to disconnect any current Bluetooth connection so that you can connect with another device immediately.

### ***Joystick***

Slide the joystick in any direction to control the stabilizer's movement.

### ***Centering***

Press the mode button twice rapidly to center your phone instantly.

### ***Zoom***

Slide the zoom switch to control the camera's zoom. This feature is only accessible with a Bluetooth connection, and may not be available on some model phones.

## Gimbal Pro

Download the Gimbal Pro app for additional functionality (such as zoom, panoramic tracking and time lapse) when using your stabilizer.

The Gimbal Pro app is available on the Google Play store or Apple App store. Just search for "Gimbal Pro" or scan the QR code below.



Support iOS and Android

The Gimbal Pro app requires iOS 12.0 or Android 6.0 or greater. Before starting the app, make sure that you have a Bluetooth connection between your phone and stabilizer.



## Maintenance and Care

1. Please keep this product away from children and pets.
2. Please store this device in a cool, dry place.
3. Do not overcharge the battery. Unplug the charging cable once charging is complete.
4. Do not use in extreme temperatures.
5. Before using, inspect the ports and plugs to make sure that they are clear of dust and debris before charging a device or inserting a cable.
6. Use a soft cloth to clean. Never use any harsh chemicals or detergents.
7. Never tug or yank on any cables that are connected to your stabilizer. Connect and disconnect cables and plugs as carefully as possible.
8. Please recycle or dispose properly based on the laws and rules of your municipality. Contact local recycling facilities and/or the manufacturer for further information.

## Specifications

Tile Angle:	160°
Roll Angle:	325°
Pan Angle:	340°
Net Weight:	362g
Payload:	280g
Working Temperature:	0°-40° C

## Specifications

Controllable Tilt Angle:  $+30^{\circ}/-30^{\circ}$

Controllable Roll Angle:  $+90^{\circ}/-90^{\circ}$

Controllable Pan Angle:  $+240^{\circ}/-240^{\circ}$

## Specifications

Working Voltage:	3.4~4.2V (Standard 3.7V)
Working Current:	150~3000mA (Standard 1500mA)
Dimensions:	Unfolded--260mm x 130mm x 88mm   Folded--152mm x 110mm x 46.6mm
Charging Time:	Approximately 80 minutes (using a 5V 2A adapter)
Working Time:	4-5 hours
Input Voltage:	5V
Input Current:	2A

## FCC Statement

Changes or modifications not expressly approved by the party responsible for compliance could void the user's authority to operate the equipment.

This device complies with Part 15 of the FCC Rules. Operation is subject to the following two conditions: (1) this device may not cause harmful interference, and (2) this device must accept any interference received, including interference that may cause undesired operation.

This equipment has been tested and found to comply with the limits for a Class B digital device, pursuant to Part 15 of the FCC Rules. These limits are designed to provide reasonable protection against harmful interference in a residential installation. This equipment generates, uses and can radiate radio frequency energy and, if not installed and used in accordance with the instructions, may cause harmful interference to radio communications. However, there is no guarantee that interference will not occur in a particular installation.

If this equipment does cause harmful interference to radio or television reception, which can be determined by turning the equipment off and on, the user is encouraged to try to correct the interference by one or more of the following measures:

- Reorient or relocate the receiving antenna.
- Increase the separation between the equipment and receiver.
- Connect the equipment into an outlet on a circuit different from that to which the receiver is connected.
- Consult the dealer or an experienced radio/TV technician for help.

## Vivitar One Year Warranty

This warranty covers the original consumer purchaser only and is not transferable.

This warranty covers products that fail to function properly UNDER NORMAL USAGE, due to defects in material or workmanship. Your product will be repaired or replaced at no charge for parts or labor for a period of one year.

### What Is Not Covered by Warranty

Damages or malfunctions not resulting from defects in material or workmanship and damages or malfunctions from other than normal use, including but limited to, repair by unauthorized parties, tampering, modification or accident.

To Obtain Warranty Service and Troubleshooting Information:

Call 1-800-592-9541 or visit our website at [www.vivitar.com](http://www.vivitar.com).

To receive warranty service along with the name and address of an authorized product service center, the original consumer purchaser must contact us for problem determination and service procedures. Proof of purchase in the form of a bill of sale or receipted invoice, evidencing that the product is within the applicable warranty period(s), MUST be presented in order to obtain the requested service. It is your responsibility to properly package and send any defective products along with a dated copy of proof of purchase, a written explanation of the problem, and a valid return address to the authorized service center at your expense. Do not include any other items or accessories with the defective product. Any products received by the authorized service center that are not covered by warranty will be returned unrepaid.

## **Vivitar One Year Warranty (continued)**

NO WARRANTIES, WHETHER EXPRESS OR IMPLIED, INCLUDING, BUT NOT LIMITED TO, ANY IMPLIED WARRANTIES OF MERCHANTABILITY OR FITNESS FOR A PARTICULAR PURPOSE, OTHER THAN THOSE EXPRESSLY DESCRIBED ABOVE SHALL APPLY. DISTRIBUTOR FURTHER DISCLAIMS ALL WARRANTIES AFTER THE EXPRESS WARRANTY PERIOD STATED ABOVE. NO OTHER EXPRESS WARRANTY OR GUARANTY GIVEN BY ANY PERSON, FIRM OR ENTITY WITH RESPECT TO THE PRODUCT SHALL BE BINDING ON DISTRIBUTOR. REPAIR, REPLACEMENT, OR REFUND OF THE ORIGINAL PURCHASE PRICE - AT DISTRIBUTOR'S SOLE DISCRETION - ARE THE EXCLUSIVE REMEDIES OF THE CONSUMER. IN NO EVENT WILL DISTRIBUTOR, ITS MANUFACTURERS, OR SAKAR INT. BE LIABLE FOR ANY INCIDENTAL, DIRECT, INDIRECT, SPECIAL, PUNITIVE OR CONSEQUENTIAL DAMAGES (SUCH AS, BUT NOT LIMITED TO, DAMAGES FOR LOSS OF PROFITS, BUSINESS, SAVINGS, DATA OR RECORDS) CAUSED BY THE USE, MISUSE OR INABILITY TO USE THE PRODUCT. EXCEPT AS STATED HEREIN, NO OTHER WARRANTIES SHALL APPLY. NOTWITHSTANDING THE FOREGOING, CONSUMER'S RECOVERY AGAINST DISTRIBUTOR SHALL NOT EXCEED THE PURCHASE PRICE OF THE PRODUCT SOLD BY DISTRIBUTOR. THIS WARRANTY SHALL NOT EXTEND TO ANYONE OTHER THAN THE ORIGINAL CONSUMER WHO PURCHASED THE PRODUCT AND IS NOT TRANSFERABLE.

Some countries, states or provinces do not allow the exclusion or limitation of incidental or consequential damages or allow limitations on warranties, so limitation or exclusions may not apply to you. This warranty gives you specific legal rights, and you may have other rights that vary from state to state or province to province. Contact your authorized retailer to determine if another warranty applies.

# VIVITAR®

©2022 Sakar International  
195 Carter Drive  
Edison, NJ 08817  
Support: 800 592 9541  
[www.vivitar.com](http://www.vivitar.com)

The Bluetooth® word mark and logos are registered trademarks owned by the Bluetooth SIG, Inc. and any use of such marks by Sakar International is under license. Other trademarks and trade names are those of their respective owners.