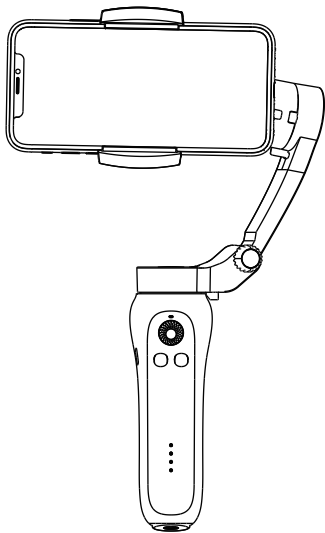


L7B Foldable 3 axis gimbal stabilizer

User Manual



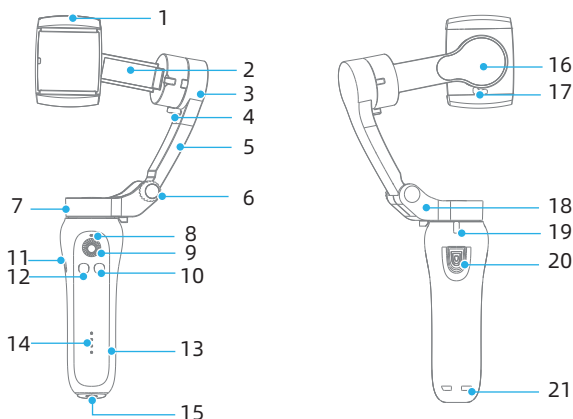
(Smartphone not included)

CONTENT

1. Get to know the Foldable 3 axis gimbal stabilizer	2
2. Operation	3
2.1 Folding&Unfolding	3
2.2 Charging	4
2.3 Install the smart phone	4
2.4 Power on/ Power off	5
2.5 Horizontal and vertical switching	5
2.6 Phone screen back to original	5
3. Download & Connect APP	6
3.1 Download APP	6
3.2 Connect APP	6
3.3 Use smart phone camera	6
3.4 Shutter button operation	7
4. Functional operation	7
4.1 Switching stabilizer modes	7
4.2 Operating modes	7
4.3 Power button operation	9
4.4 Mode Button operation	9
4.5 Indicator light instruction	9
5. Product specification	10
6. Caution	11
7. Storage and maintenance	12
8. FCC caution	13

Foldable 3 axis gimbal stabilizer is a 3-axis gimbal for smartphone with small size, foldable. It can be put in a pocket after folding. The foldable 3 axis gimbal stabilizer support horizontal and vertical shooting. After connected to bluetooth on smart phone, it can control the phone to shoot.

1. Get to know the Foldable 3 axis gimbal stabilizer



- | | | |
|-------------------------|-----------------------------|--------------------------|
| 1. Smartphone clamp | 8. Bluetooth indicator | 15. 1/4 Thread screw |
| 2. Cross arm | 9. Joystick | 16. Roll axis |
| 3. Tilt axis | 10. Power / Function button | 17. Roll axis limitation |
| 4. Tilt axis limitation | 11. Micro-USB Port | 18. Pan arm |
| 5. Vertical arm | 12. Mode button | 19. Pan axis limitation |
| 6. Folding knob | 13. Handle | 20. Shutter button |
| 7. Pan axis | 14. Battery level indicator | 21. Rope hole |

2. Operation

Notes:

- (1) Please charge the gimbal fully, when you first use of this product;
- (2) Please turn off the power when you are not using it;
- (3) Please unlock the three-axis limitation before power on and using;
- (4) Please install the phone horizontally;

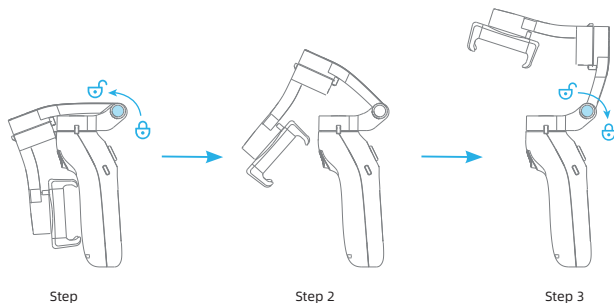
2.1 Folding&Unfolding

Unfolding: (1) Loosen the folding knob and tighten the knob after unfolding the vertical arm;

- (2) Unlock the three-axis limitation;

Folding: (1) Lock the three-axis limitation;

(2) Loosen the folding knob, and tighten the knob after folding the vertical arm;



2.2 Charging

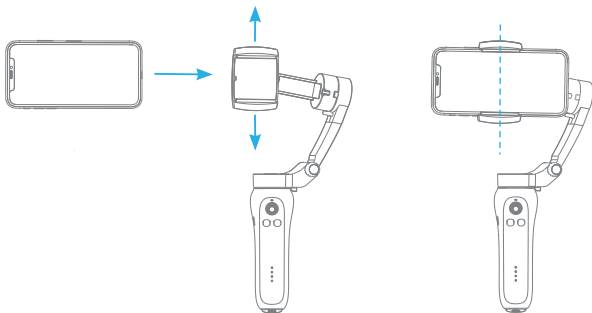
Use cable to charge

Charge state	Battery power
The first light flashes	0%-25%
The first light is on, the second light flashes	25%-50%
The first and second lights are on, the third light flashes	50%-75%
The first three lights are on, the fourth light flashes	75%-99%
Four lights are on	100%

2.3 Install the smart phone

Remove the phone case before installation, keep the phone screen horizontally and the phone camera face left.

Pull the smart phone clamp and put the phone into it, make sure the smart phone clamp in the middle of smart phone.



Install complete

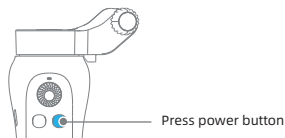
2.4 Power on/power off

Please unlock the limitation of gimbal before power on;

Install the smart phone then power on;

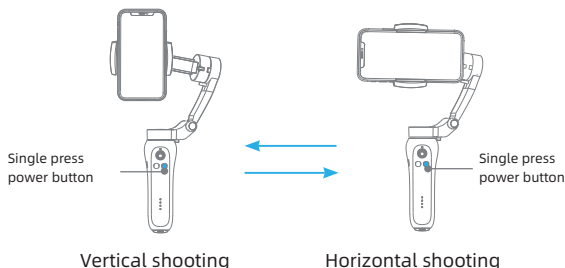
Power on: press the function/power button for 3-4 seconds until the indicator light flashes blue;

Power off: press the function/power button for 3-4 seconds until the indicator light is off;



2.5 Horizontal and Vertical switching

Single press power button to switch between horizontal and vertical shooting



2.6 Phone screen back to original

Press mode button two times to make the phone screen back to original position. It's working for both horizontal and vertical.

3. Download & connect APP

3.1 Download APP

(1) Scan QR Code (For Android +iOS) and download below APP for more functions;



Support both Android and IOS

(2) Find the “Gimbal Pro” App on Google Play & APP Store

Android: Search and download “Gimbal Pro” in Google Play.

iOS: Search and download “Gimbal Pro” in Apple store.



Gimbal Pro

3.2 Connect APP

Turn on bluetooth, get into the APP searching device, find the device name “STABILIZER-XXXXXX”, then click device name to enter the camera interface.

APP bluetooth name: STABILIZER-XXXXXX (Random six digits)

3.3 Using smart phone camera

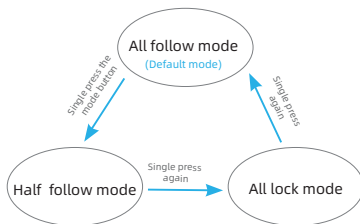
Smart phone camera also can work with gimbal, turn on bluetooth, find the bluetooth name “STABILIZER” in smart phone setting page to connect.

3.4 Shutter button operation

The shutter button can shoot video & photo when bluetooth is connected.

4. Functional Operation

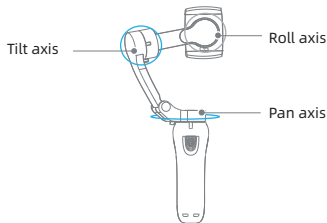
4.1 Switching stabilizer modes



4.2 Operating modes

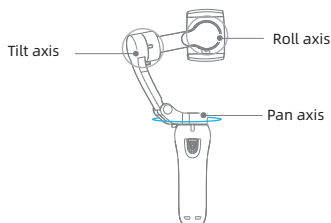
All follow mode(default mode when power on)

Definition: Roll axis is locked,the pan (left/right) and tilt(up/down) are following the movement of handle;



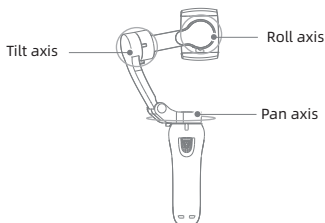
Half follow mode:

Definition: Tilt & Roll axis are locked. Pan axis rotates (left/right) smoothly with handle;



Lock mode:

Definition: Pan,Tilt, Roll axis are all locked. The camera keeps still and stable, which means the camera cannot follow movement of handle.



Flip to lock

Move the pan or tilt axis to certain direction then lock, which is convenient for fast and accurate position.

4.3 Power button operation

Power button operate	Function Description
Single press	Vertical&horizontal switch
Press two times	Camera direction switch
Press three times	Photo/Video shooting switch

4.4 Mode button operation

Mode Button operate	Function Description
Single press	Three modes switch
Press two times	Gimbal back to original

4.5 Indicator light instruction

Indicator light status	Instruction
Bluetooth light blinks long&short switch	Communication failure
Bluetooth light is on	Pressing the power button
Bluetooth light is fast flashing	In process of action (back to original, mode switch, calibration, overload protection)
Bluetooth light is on	Bluetooth connected
Bluetooth light is slow flashing	Bluetooth unconnected

Flicker of power indicator (from bottom to top)	Battery power
The first light is flashing	0%-25%
The first light is on, the second light is flashing	25%-50%
The first and second lights are on, the third light flashes	50%-75%
The first three lights are on, the fourth light is flashing	75%-99%
Four lights are on	100%

5. Product Specification

Tilt Angle	160°
Roll Angle	325°
Pan Angle	340°
Net Weight	348g
Max Payload	280g
Working Temperature	0C°-40C°
Controllable Tile Angle	+30°/-30°
Controllable Roll Angle	+90°/-90°
Controllable Pan Angle	+240°/-100°
Working Voltage	3.4~4.2V(Standard 3.7V)
Compatible Smartphone	Width: 55mm-90mm
Compatible Range	Diagonal: ≤180mm Thickness: 55-90mm Width: ≤9.5mm

Working Current	150~3000mA(Standard 1500mA)
Gimbal Dimension	Unfold: 260mm*130mm*88mm Folded: 152mm*110mm*46.6mm
Charging Time	3H
Working Time	4.5-5H
Face Tracking	yes
APP	yes
Input Voltage	5V
Input Current	1A

6. Cautions

- 1/ Ensure the motor rotation is not blocked by external force during and after the stabilizer is powered on;
- 2/ Please do not contact with sea water or corrosive liquid, if the stabilizer unmarked waterproof.
- 3/ Please do not disassemble the stabilizer (except for the detachable accessories in the manual);
- 4/ If the motor works continuously for a long time, the surface temperature of the motor may be too high.
- 5/ It is strictly forbidden to drop or collide with the stabilizer, which may damage it and cause abnormal operation;

7. Storage and maintenance

1/ Please keep this product and battery away from children and pets;

2/ It is forbidden to put the product and battery near the heat source (furnace or heater, etc.) and in the car at hot weather;

3/ Please store the product and battery in a dry environment;

4/ Do not overcharge or discharge the battery, otherwise the battery cell will be damaged;

5/ Do not use the product and battery in the environment with too high or too low temperature;

8. FCC caution

Any Changes or modifications not expressly approved by the party responsible for compliance could void the user's authority to operate the equipment.

This device complies with part 15 of the FCC Rules. Operation is subject to the following two conditions: (1) This device may not cause harmful interference, and (2) this device must accept any interference received, including interference that may cause undesired operation.

FCC RF Radiation Exposure Statement:

1. This Transmitter must not be co-located or operating in conjunction with any other antenna or transmitter.
2. This equipment complies with RF radiation exposure limits set forth for an uncontrolled environment.

The device has been evaluated to meet general RF exposure requirement. The device can be used in portable exposure condition without restriction.

Note: This equipment has been tested and found to comply with the limits for a Class B digital device, pursuant to part 15 of the FCC Rules. These limits are designed to provide reasonable protection against harmful interference in a residential installation. This equipment generates, uses and can radiate radio frequency energy and, if not installed and used in accordance with the instructions, may cause harmful interference to radio communications. However, there is no guarantee that interference will not occur in a particular installation. If this equipment does cause harmful interference to radio or television reception, which can be determined by turning the equipment off and on, the user is encouraged to try to correct the interference by one or more of the following measures:

the following measures:

- Reorient or relocate the receiving antenna.
- Increase the separation between the equipment and receiver.
- Connect the equipment into an outlet on a circuit different from that to which the receiver is connected.
- Consult the dealer or an experienced radio/TV technician for help.