



V78

Quick Installation Guide

① Precautions

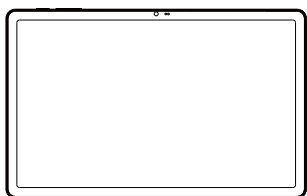
1. Please do not disconnect the power supply during the device's startup process or while the device is upgrading its software, as the aforementioned operations may cause damage to the device's program, leading to the device's inability to start.
2. Please use the power adapter included in the device packaging, as using other uncertified alternative power adapters may cause damage to the device.
3. Wireless handsets may be subject to interference from other wireless signals, including but not limited to Wi-Fi networks and nearby Bluetooth devices. Such interference can affect voice quality. To ensure optimal performance, it is recommended to use wireless handsets in an environment with minimal wireless signal interference. If you experience voice quality issues while using the wireless handset, please contact our technical support team for assistance.

② Overview

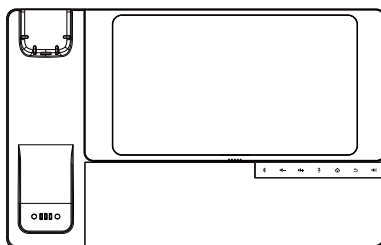
V78 is designed for enterprise and vertical markets, ideal for offices, health-care, hospitality, warehousing, and retail. With a 3-in-1 design integrating a tablet, magnetic base, and Bluetooth handset, they can be used independently or docked seamlessly.

With an original aesthetic design style, V78 features a 10.95-inch adjustable high-definition color touch screen, ultra-high-definition gorgeous sound quality. It provides users with excellent interaction and a comfortable real-time interconnected communication experience.

③ Packing List



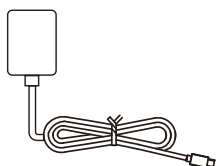
W638W(Tablet)



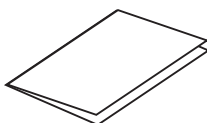
CH26(Base)



Bluetooth Handset



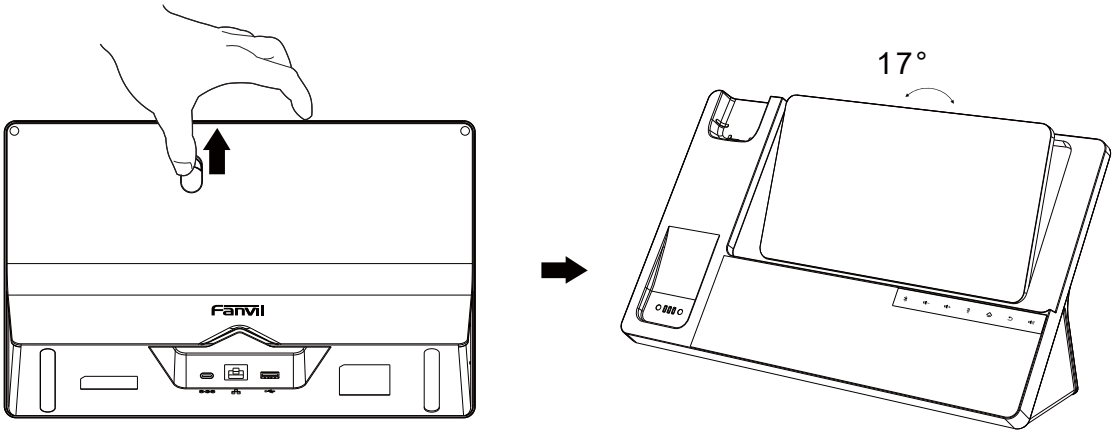
Power Adapter



Quick Installation Guide

4 Device Usage

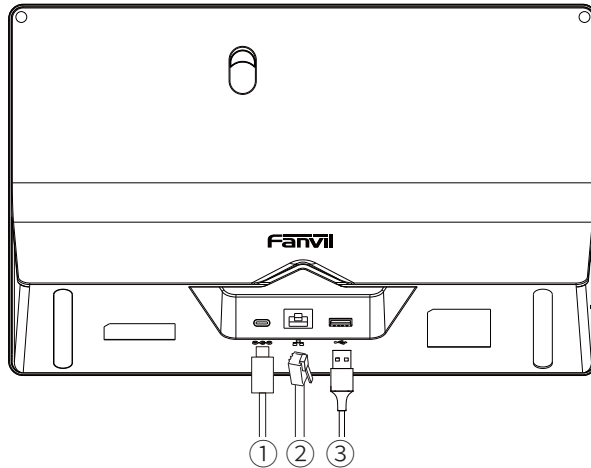
1. You can adjust the height of the stand to suit your preference by pressing the button on the back of the base, as shown in the image below.



Note: The tablet and base feature a magnetic design, ensuring the tablet remains secure even when the base is tilted.

2. Device Interface

- ① Power Port: Connects to the power adapter.
- ② Network Port: Connects to a local area network (LAN) or the internet.
- ③ USB Port: Connects to USB devices for charging or data transfer.



(1) Connect the power supply:

Use the included power adapter (5V/3A) to connect to the power port. Once powered on, the base speaker will emit a startup tone.

Note: Using a third-party power adapter may damage your device. Please ensure the base is properly connected to the power source before performing any operations.

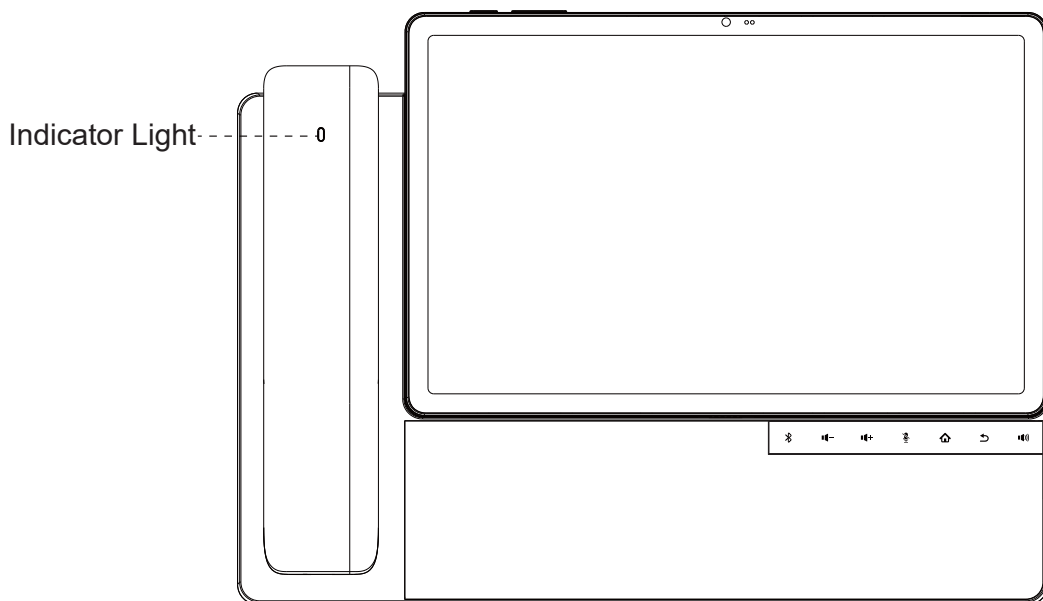
(2) You can connect the device using a wired network.

Note: Ensure the base is powered on before connecting to the switch. The switch supports network connectivity only and does not provide power.

(3) Base USB Function:

USB drives, controllers, and keyboards can be connected.

3. Connect and use the Bluetooth handset as shown below:
After the base is connected to power >> Place the handset in the handset slot >>
The handset indicator light will turn on.



4. How to connect to the network? You have two network connection options, and you can choose the most suitable one based on your current office environment.

① **Connect to wired network:**

Connect the Ethernet cable to the base's network port, then place the tablet on the base to use a wired network. Once connected, an icon will appear at the top right corner of the tablet screen.

Note: The Ethernet connection will be disconnected when the tablet is removed from the base.

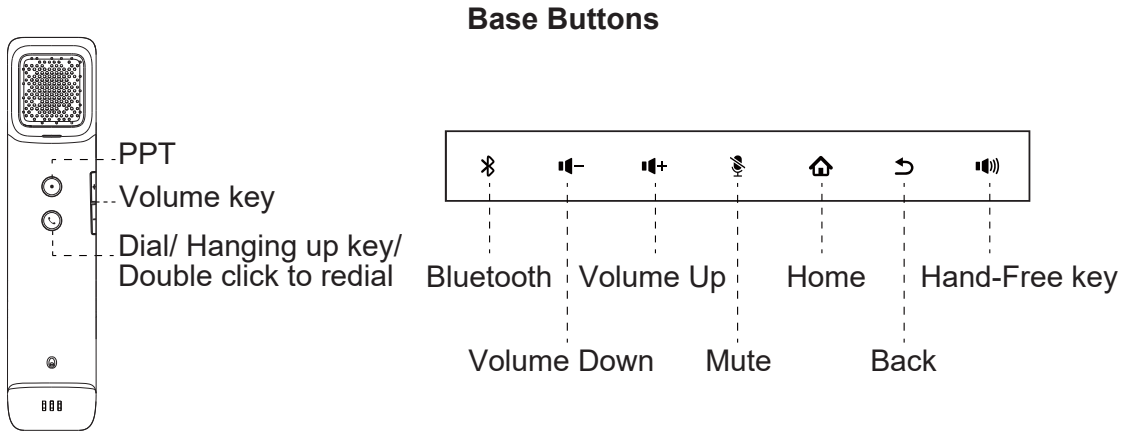
② **Connect to a wireless network:**

a) Press and hold the power button on the top-left corner of the tablet to turn it on and unlock. Swipe down from the top of the screen, tap [Internet], enable Wi-Fi, and select your desired wireless network from the list. If the network is secured, enter its password in the "Password" field and tap [Connect] to establish the connection.

b) Swipe up from the bottom of the screen, tap [Settings], navigate to [Network & Internet], and select [Internet]. Enable Wi-Fi, choose your desired wireless network from the list, and if required, enter the password in the "Password" field. Tap [Connect] to complete the connection.

Note: When both a wired network and Wi-Fi are connected, the device will prioritize using the wired network.

5 Physical Device Layout



PTT: The functionality (Mute/Open APP/Open URL) can be configured using Base Settings App.

Bluetooth: Quickly enable/disable Bluetooth, enter pairing mode, or switch connected device.

Volume Up/Down:
In standby or ringing state: Increase or decrease the ringtone volume.
During a call: Increase or decrease the handset or hands-free volume.

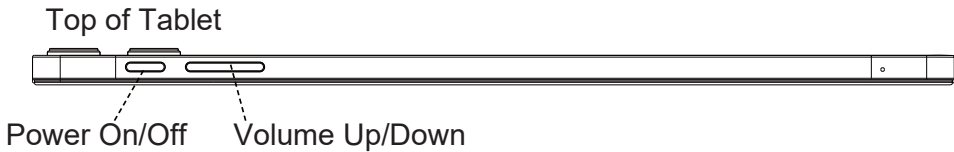
Mute: Mute/unmute the microphone.

Home: Instantly return to the home screen when pressed.

Back: Return to the previous screen when pressed.

Hand-Free key: enables speakerphone mode, allowing users to make or receive calls without holding the handset.

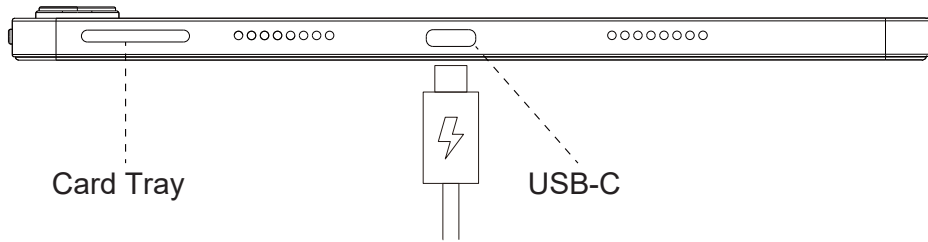
Tablet Interface



Power On/Off: Pressing the power button will turn off the screen and lock the tablet. Briefly press the power button again to turn the screen back on. Then, press and hold the power button at the top-left corner of the tablet for 2 seconds to display options such as “Emergency”, “Power Off”, and “Restart”.

Volume Up/Down: In standby or ringing mode: Increase or decrease the ringer volume. In call mode: Increase or decrease the handset or speakerphone volume.

Side of Tablet



Card Tray: You can install a Micro SD card up to 256GB in the card tray.

In the Model: V78, you can install.

- One Micro SD card

USB-C Port: The power port can connect to a power adaptor for charging or be used for data transfer.

⑥ Quick Installation Guide

1. Information Retrieval

MAC Address Information: Includes the MAC address of the base station and the Bluetooth handset.

Bluetooth Handset Battery Status: Displays battery status (Idle, Charging, Fully Charged, or Error).

Firmware Version: Shows the firmware version of the base station and the Bluetooth handset.

2. Power On

Press and hold the power button located at the top-left of the tablet for 3 seconds to power it on. The initialization process will begin automatically.

Note: If the tablet fails to power on due to insufficient battery, please refer to section.

3. Charging

Charging Via the Base:

After connecting the docking station to a power source, place the tablet on the dock. The tablet will charge through the metal contacts on the dock. While charging, the charging icon will appear at the top-right corner of the tablet's screen.

Charging Via Power Adapter:

Use a Type-C power adapter and connect it directly to the tablet's bottom port for charging. While charging, the charging icon will appear at the top-right corner of the tablet's screen.

Note: Place the tablet on the dock and connect it using the pogo pin.

4. Activation

After powering on the tablet, follow the on-screen instructions to complete the activation process, and the device will be ready for normal use.

5. Standby Screen

The standby screen appears when the device is idle, displaying the default home screen or background.



Status Bar: Displays function status.



The Google search bar is used for quickly searching information, accessing Google services, and more.



App icons: Shortcut icons for main applications. Click to open the corresponding application.



Back: Return to the previous page or exit the current application.

Home: Return to the standby home screen.

Task Manager: View and manage recently used applications.

6. Making a Call

Pick up the handset, and the tablet will automatically switch to the dialing interface. Enter the number to make an external call or click the dialer icon, then tap the dial keypad, and enter the number to make the external call.

Note: A SIM card must be inserted before making an external call.

7. Default Phone Application

Use the Base Setting app to configure the default phone application, base lighting effects, and function keys.

8. Answering Calls

When there is an incoming call, pick up the handset to answer immediately, or press the call button on the base to answer the call.

NOTE: This equipment has been tested and found to comply with the limits for a Class B digital device, pursuant to part 15 of the FCC Rules. These limits are designed to provide reasonable protection against harmful interference in a residential installation. This equipment generates, uses and can radiate radio frequency energy and, if not installed and used in accordance with the instructions, may cause harmful interference to radio communications. However, there is no guarantee that interference will not occur in a particular installation. If this equipment does cause harmful interference to radio or television reception, which can be determined by turning the equipment off and on, the user is encouraged to try to correct the interference by one or more of the following measures:

- Reorient or relocate the receiving antenna.
- Increase the separation between the equipment and receiver.
- Connect the equipment into an outlet on a circuit different from that to which the receiver is connected.
- Consult the dealer or an experienced radio/TV technician for help

Changes or modifications not expressly approved by the party responsible for compliance could void the user's authority to operate the equipment.

This device complies with Part 15 of the FCC Rules. Operation is subject to the following two conditions:

(1) this device may not cause harmful interference, and (2) this device must accept any interference received, including interference that may cause undesired operation.

FCC RF Exposure requirements: This equipment has been tested for SAR compliance. This equipment should be installed and operated with minimum distance 5 mm between the radiator and your body. This transmitter must not be collocated or operating in conjunction with any other antenna or transmitter.

Fanvil Technology Co., Ltd

Website: www.fanvil.com

EMail: sales@fanvil.com support@fanvil.com

Tel: +86-755-2640-2199 Fax: +86-755-2640-2618

Add: 10/F Block A, Dualshine Global Science Innovation Center,
Honglang North 2nd Road, Bao'an District, Shenzhen, China