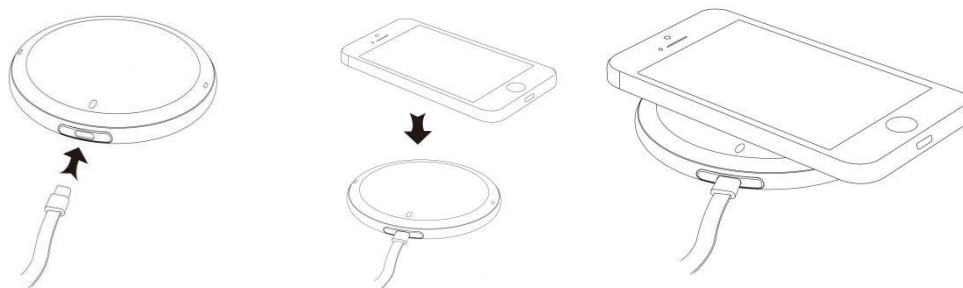


Wireless Charging Base

NSC019

USERS GUIDE

Instruction



- When the device is turned on, the indicator light flashes in blue, red, and purple and then goes out.
- The blue light will be on by putting the mobile phone in the induction zone to start charging.
- When a metal foreign object is sensed, the red light flashes and the charging protection is turned on.

Product Specifications

- Model: NSC019
- Input: 5V/2A; 9V/2A; 12V/1.5A
- Size: 92*92*10.9mm
- Output: 15W (max)
- Supporting overvoltage protection and over temperature protection
- Qi standard of iPhone, Samsung and other whole series will support the wireless charging models.

The power adapter with QC2.0 or QC3.0 can realize Apple 7.5W and Samsung 10 W quick charge.

Note: The actual parameters would be different because of products or other factors. The data shown here is indicative only.

Attentions

- Do not store device in high-temperature environment, excessively damp or corrosive environment.
- Do not place device in fire or water.
- Do not disassemble or modify this device.

- Do not put metal or metallic phone shell on the device.
- This device is not recommended to minors.

Caution: The user is cautioned that changes or modifications not expressly approved by the party responsible for compliance could void the user's authority to operate the equipment.

This device complies with Part 15 of the FCC Rules. Operation is subject to the following two conditions: (1) this device may not cause harmful interference, and (2) this device must accept any interference received, including interference that may cause undesired operation.

NOTE: This equipment has been tested and found to comply with the limits for a Class B digital device, pursuant to Part 15 of the FCC Rules. These limits are designed to provide reasonable protection against harmful interference in a residential installation. This equipment generates, uses and can radiate radio frequency energy and, if not installed and used in accordance with the instructions, may cause harmful interference to radio communications. However, there is no guarantee that interference will not occur in a particular installation. If this equipment does cause harmful interference to radio or television reception, which can be determined by turning the equipment off and on, the user is encouraged to try to correct the interference by one or more of the following measures:

- Reorient or relocate the receiving antenna.
- Increase the separation between the equipment and receiver.
- Connect the equipment into an outlet on a circuit different from that to which the receiver is connected.
- Consult the dealer or an experienced radio/TV technician for help.

FCC Radiation Exposure Statement:

This equipment complies with FCC radiation exposure limits set forth for an uncontrolled environment.

This equipment should be installed and operated with a minimum distance of 20cm between the radiator and your body.

This transmitter must not be co-located or operating in conjunction with any other antenna or transmitter.