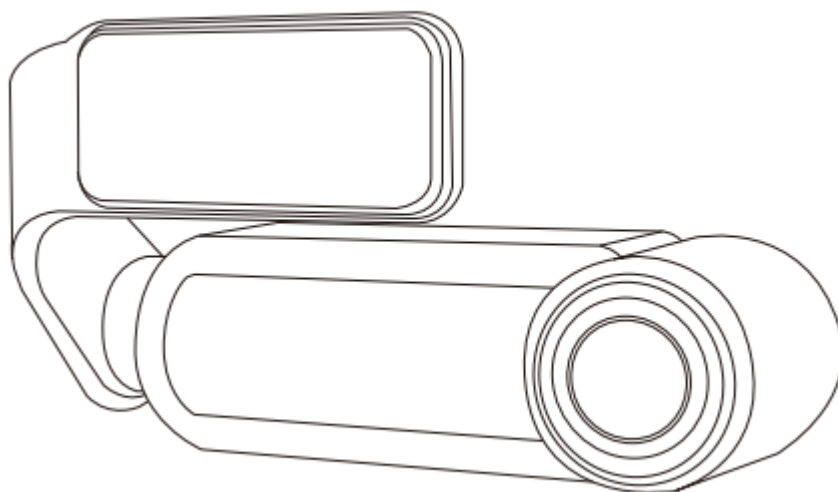


Herogogo PRO

HeroGoGo Smart Driving Assistant System

Operating manual



Forward

Thank you very much for purchasing & using HeroGoGo Pro (a life Aid Device), this product provides sufficient visibility for driving at night, rain and fog/smog. This is a Smart Active Driving Assistance devices which gives relaxation & provide fun while driving.

This manual will help in details how to install, operate the device and the corresponding product parameters and precautions. Please read device manual carefully before use and keep this manual in safe place. We hope that this product will meet and serve your night driving safety needs.

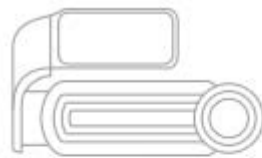
NOTE: there are many change in specifications due to online updating. Please refer to the actual upgrade, in order to improve your experiences. We will upgrade the product's firmware time to time, we reserve the right to upgrade the technology directly without prior notice.

Precautions

Please read and understand safety precautions before use.

1. Please follow the instruction to operate the device step by step, internal components of the product may be damage if the product will operate/handle in the incorrect way.
2. Handle with care, avoid to falling. The product can be damage by falling.
3. Do not place product near magnetic field. Such as magnetic, motor, and also avoid placing product near strong radio waves. Wireless video performance can be damage if place in the above environments.
4. Do not place the product under strong sun light or very high temperature (refer to specification about temperature)
5. Do not attempt to modify or disassemble the product.
6. Always use standard and certified charger to charge the battery, immediately remove charging cable in case of overhead or found smoke to avoid fire.
7. Keep the product out of the reach of kids to avoid accidental electric shock
8. Please keep / store the product in cool and dry place

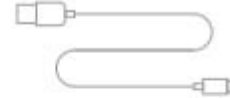
1. Standard Accessories



Pro1×1



CVBS cable×1



3.5M cable×1



Charger×1

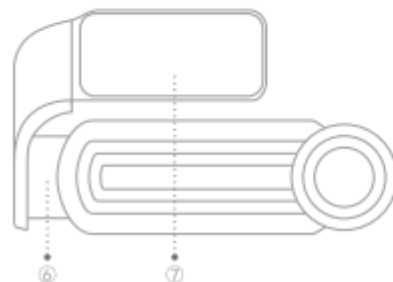
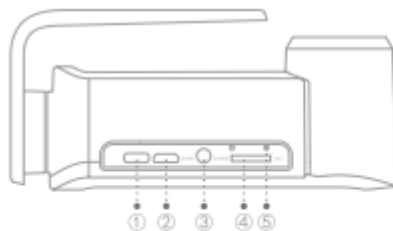


adhesives×2



user manual×1

2. Identification Marks



① Power button / power indicator(LED)

② USB charging port /
U disk using interface

③ CVBS interface

④ SD Slot

⑤ Microphone

⑥ Fixed bracket

⑦ Fixing surface (adhesive glue)

3. Night Vision Device basic instructions

a) Power On/Off

Power On method : Long press the power button (1) for 3 seconds, the power inductor (LED) (1) light will turn on and the device booting process will complete.

Boot method (by app): connect the device with APP via Bluetooth. Configure the mobile phone hotspot and the password (standard password of all devices are 12345678) as per the description which is mentioned in APP sliding menu in help interface tab & input the device password to boot and operate in real time. (mobile

phone system below android 8.8 will be automatically configure)

Shutdown: Press and hold the Power Button (1) for 3 seconds, remove figure when power inductor (LED) light is turned, or shutdown the device through APP feature by clicking "remote shutdown" or use voice command.

Caution: Voice command needs a noise-free environment to work correctly.

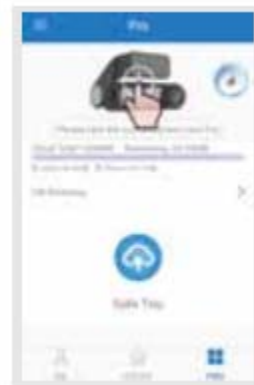
Force Shutdown: Press & Hold the power button (1) for 10 seconds to perform force shutdown.

b) Connect with APP:

Bluetooth connection: click the Herogogo Pro APP night vision interface icon to select the Bluetooth name of the pop-up night vision device and connect according to the prompt, the connection method of different operating systems may be different, please read Help in APP.

Android Phone Connection

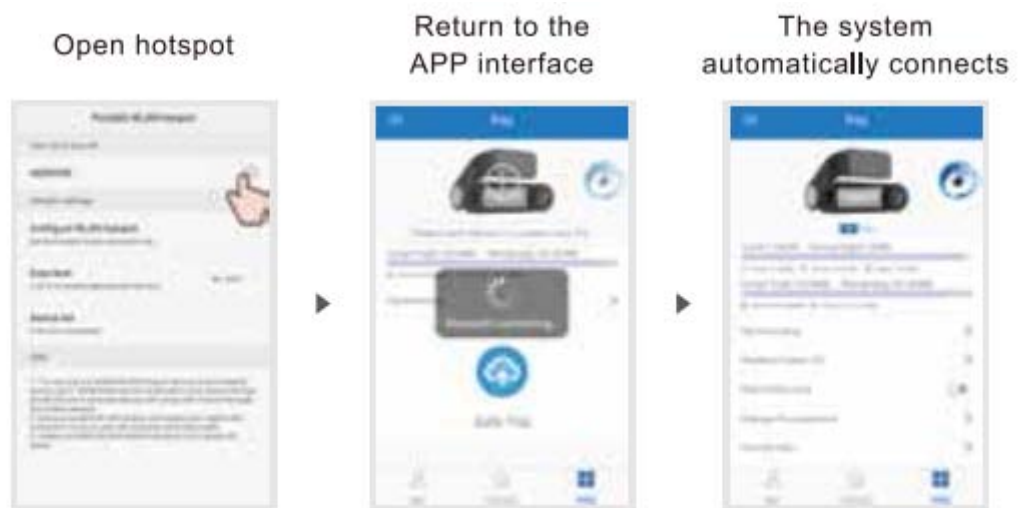
1. Click on PRO Icon which is located on bottom right in the APP.



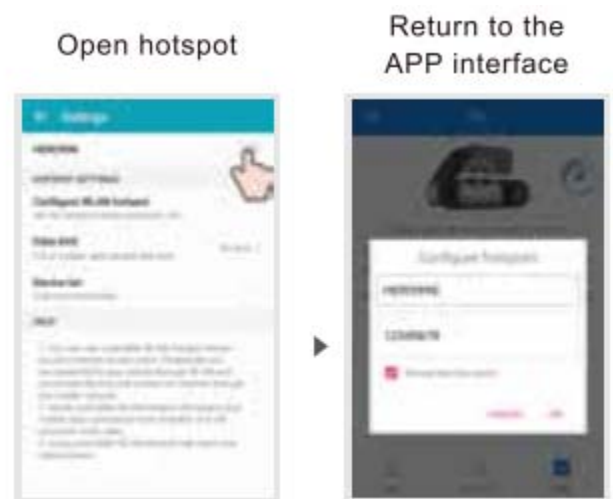
2. Click "Add icon button" to search the device within range (device names start with : HEROGOGO_PRO_XXXX) please find box sticker to identify wifi name.



3. Click on the Bluetooth of your night vision device to connect and enter the hotspot setting of the mobile phone
4. Android 8.0 or lower version following system needs to be applied
 - a) Open Hotspot
 - b) Setup hotspot according to your mobile OS setting
 - c) **Pair with the device**



5. Android System 8.0 or higher system
Enter the phone hotspot name and password in the dialog box, click “OK” button to start connecting to the night vision device. wait for 8 seconds or so to establish the connection successfully. If the connection fails to connect please check the connection steps and follow the steps again to connect (steps can be found in APP help menu)



c) **Apple Phone connection**

Download Herogogo APP from apple store and complete the installation and registration process.

Turn on the device, enter the phone-set-wifi setting, select your device name (HEROGOGO_PRO_XXXX) please find box sticker to identify WiFi name, to connect, open the app after the connection, wait for 2 seconds to connect successfully.

If Night vision device is not turned on, Open the APP to enter the device interface, click “open Night Vision”, the system will prompt to open Bluetooth, choose Device name (HEROGOGO_PRO_XXXX), after successfully WiFi connection. Return to app interface and wait for 2 seconds

Note: the app will be update from time to time, and the interactive interface may be different after upgrade.

d) **External LCD Connection.**

Connect CVBS cable with CVBS interface (3) , turn on the camera

4. Active Warnings

Earlier Warning : in case of emergency, click the preview interface warning button, the device will perform earlier warning operation 10 seconds before and 10 seconds after and upload to cloud and at the same time send an emergency SMS to the family member set in the APP along with video clips and geographical position for rescue/ help

Collision Warning/Alarm: If the device is connected with the APP, the device will perform earlier warning in case of emergency brake or collision, 10 seconds / before / after video clips along with geographical location will upload to cloud for nearby help (herogogotribe users) and at the same time a Short SMS along with clips / geographical location will send to emergency contact which user defined as a emergency contact for rapid help & rescue.

Note: if the device is not connected with the APP , cloud / sms function will not perform actively, the video can be store in the device without geographical location.

5. Restoring device Wifi Password

Device default password is : 12345678

Restoring : press the power button (1) three time in 2 seconds to restore the initial password, the device will automatically restore the password as default password. the process will complete after the device is successfully reboot and play welcome message.

6. Voice Commands

To wake-up any time say "GOGO", the device will reply "YES COMMANDER"

Voice Command	Function
Fog Away	Anti fog / Anti Rain
Fog Down	Shutdown anti fog / anti rain faction
Big	Zooming faction
Zoom in	Zooming faction
Take Photo	Take a picture and store in tribe or device
Not Remind	Quite Device voice interaction voices
Live Share	Live video sharing
Shut Down	Shutdown the device
GoGo	Active / awake
Hello GoGo	Active / awake

Note: Voice commands are sensitive to noise. High speed friction on the ground or large wind noise had a great impract on the voice interaction. Especially in the noise enviroinment of human voice, the accuracy of the voice interaction will be seriously affected. The correct rate of voice interaction in different noise enviroinment will vary.

7. Installation of night vision :

Please attach the washable adhesive to the bracket of the device and stick it on the right position of the front windscreen of the call. Please ensure that the lens is facing forward and turn the device to adjust the angle of the night vision device.

Removable adhesive tap: the adhesive tape can use multiple time, if you want to remove the tap, please hold the bracket and pull it vigorously. After taking off the adhesive please keep its surface free from dust, otherwise the stickiness of the adhesive got decrees.

8. Installation of night vision APP

Pay attention to the official wechat public account number of heroGoGo tribe” Download the corresponding app of HeroGoGo Pro in the public number, and follow the prompt to complete the installation (App can be download from Apple Store and Android Market)



9. CVBS interface

Plug in CVBS cable and connect with Video input/output port of the car or external LCD,

10.Firmware upgrade and APP upgrade

Firmware upgrade: Make sure that device have enough power back (recommended 50% or higher)

Make sure that the 4G Data function of the mobile phone is Tuned on and SD card installed with sufficient space.

Connect App with device

If there are firmware update released, the APP will prompt notifications

Download the firmware , which will show in progress bar

Normally upgrade take 10 mints to download and update the device firmware. Make sure that, you will not turn off the device & device have enough power otherwise there is a sick of system damage.

after upgrade, the device will automatically reboot and prompt voice command.

11.Charging

Device can charge though Car Charger. Please always use 5v/1A car charger to mentain the battery life of the device.

FCC Notice:

This device complies with Part 15 of the FCC Rules. Operation is subject to the following two conditions: (1) This device may not cause harmful interference. (2) This device must accept any interference received, including interference that may cause undesired operation.

NOTE: This equipment has been tested and found to comply with the limits for a Class B digital device, pursuant to Part 15 of the FCC Rules. These limits are designed to provide reasonable protection against harmful interference in a residential installation. This equipment generates uses and can radiate radio frequency energy and, if not installed and used in accordance with the instructions, may cause harmful interference to radio communications. However, there is no guarantee that interference will not occur in a particular installation. If this equipment does cause harmful interference to radio or television reception, which can be determined by turning the equipment off and on, the user is encouraged to try to correct the interference by one or more of the following measures:

- Reorient or relocate the receiving antenna.
- Increase the separation between the equipment and receiver.
- Connect the equipment into an outlet on a circuit different from that to which the receiver is connected.
- Consult the dealer or an experienced radio/TV technician for help.

WARNING: Changes or modifications not expressly approved by the party responsible for compliance could void the user's authority to operate the equipment.

RF Exposure

The equipment complies with FCC radiation exposure limits set forth for an uncontrolled environment. This device should be installed and operated with minimum distance 20cm between the radiator & your body.