

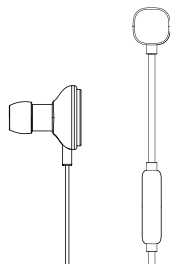
50mm

50mm

User manual

BLUETOOTH EARPHONE

Model:2184



Getting Started and Charging the Wireless Headset

1. Fully charge the headset before first use.
2. Use the provided USB cable to charge.
3. Ensure your power charging source is functioning and turned on
4. Red LED light indicates charging
5. Solid continuous blue LED light indicates fully charged

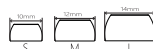
Rechargeable Battery Maintenance and Precautions

1. Only charge the battery with the provided USB cable from a 500mAh source only.
2. Do not overcharge the battery to protect the life of the internal battery. (When solid continuous blue LED light shows fully charged discontinue charging)
3. Do not leave the unit charging indefinitely or overnight.
4. To protect the battery lifespan and product functionality do not expose to heat, fire or liquid

Before using the Earplugs

1. Everyone's ears are different. Try all size of enhancers and ear tips to determine your correct fit.

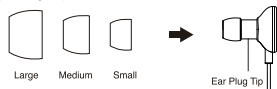
Ear TIP:



2. Select the size of protective covers that best fits you

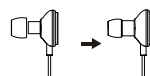


3. Fit the cover onto the tin with the round dome cover on the outside (see diagram)



Attach enhancers

Gently clip the ear tip onto the earphone.

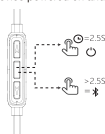


The cord should be worn in back.



Function keys

Begin with the headphones powered off and your bluetooth audio device powered on and in search mode.



State	LED behaviors
Power on	★
Power off	○
Pairing mode	★
Device connected	★x2



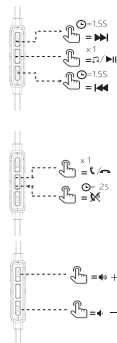
State	LED behaviors
Low battery	★
Battery level critical	★
Battery in charge	★

Music Control

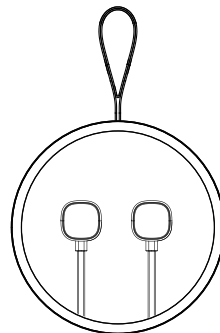
State	LED behaviors
Power on	★
Power off	○

Phone Control

Volume Control



Box



Wireless Range: 10M / 33ft
Talk Time: 4 Hours
Battery Capacity: 100mAh

Attention:

This product is not designed for children. Keep out of the reach of children. The supplier assumes no responsibility for malfunction due to damage, misuse of product, product tampering or to malfunction due to connection with an incompatible source.

FC CE RoHS



Made in China

FCC Warning Statement

Changes or modifications not expressly approved by the party responsible for compliance could void the user's authority to operate the equipment. This equipment has been tested and found to comply with the limits for a Class B digital device, pursuant to Part 15 of the FCC Rules. These limits are designed to provide reasonable protection against harmful interference in a residential installation. This equipment generates uses and can radiate radio frequency energy and, if not installed and used in accordance with the instructions, may cause harmful interference to radio communications. However, there is no guarantee that interference will not occur in a particular installation. If this equipment does cause harmful interference to radio or television reception, which can be determined by turning the equipment off and on, the user is encouraged to try to correct the interference by one or more of the following measures:

- - Reorient or relocate the receiving antenna.
- - Increase the separation between the equipment and receiver.
- - Connect the equipment into an outlet on a circuit different from that to which the receiver is connected.
- - Consult the dealer or an experienced radio/TV technician for help.

This device complies with part 15 of the FCC Rules. Operation is subject to the following two conditions:

- (1) This device may not cause harmful interference, and
- (2) this device must accept any interference received, including interference that may cause undesired operation.