

# User Manual MINI-RBS, MINI-RBS-MS (EN)



## Smart Roller Shutter Switch

User Manual V1.0

## Introduction

This compact smart curtain retrofit is designed to fit perfectly into an EU-type mounting box and supports motors with a maximum current of 1A as a load. It offers WiFi remote control and is compatible with the Matter platform, enabling seamless integration across multiple smart home systems. Simply connect the device to the switch and motor correctly to easily upgrade ordinary electric roller shutters to smart systems.



Remote Control



Percentage Control



Timer Schedule



Deviation Calibration



Voice Control



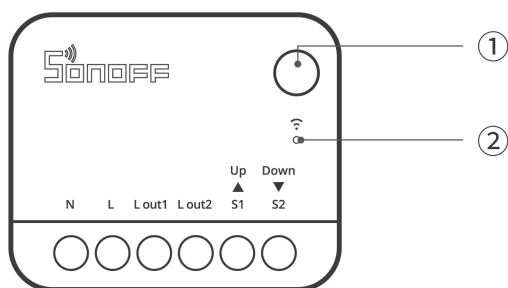
eWeLink Remote



Smart Scene



Compatible with  
Various Curtain  
Types



### ① Button

- Press and hold for 5 seconds: Device enters the pairing mode. (Pairing time 10 minutes)
- Short press three times: Switch the external switch type.

### ② LED indicator (Blue)

- Keeps on: Online.
- Flashes once: Offline
- Flashes twice: LAN
- Flashes two short and one long: Device is in pairing mode.
- Breathing mode (press and hold the button for 10 seconds): The device successfully marks the "fully open" position of the curtain.
- Flashes three times (short press the button once while in breathing mode): The device successfully marks the curtain in the "fully closed" position.
- Flashes three times: The switch type is successfully switched.

## Matter-compatible Ecosystem



Works with  
**Apple Home**



works with  
**Google Home**

works  
with



## Specification

|                                |  |
|--------------------------------|--|
| Model                          | MINI-RBS, MINI-RBS-MS                        |
| MCU                            | ESP32  |
| Rating                         | 100–240V~ 50/60Hz 1A Max (M)                 |
| Wireless connectivity          | Wi-Fi IEEE 802.11 b/g/n 2.4GHz               |
| Net weight                     | 25.1g  |
| Product dimension              | 39.5x33x16.8mm                               |
| Color                          | White  |
| Casing material                | PC   |
| Applicable place               | Indoor                                       |
| Working temperature            | 10T40 (–10°C~40°C)                           |
| Working humidity               | 5–95%RH, non–condensing                      |
| Working height                 | Less than 2000m                              |
| Certification                  | CE/FCC/RoHS                                  |
| FCC ID                         | 2APN5–MINIRBS                                |
| Pollution degree               | 2  |
| Rated impulse voltage          | 4kV  |
| Automatic action               | 10000 Cycles                                 |
| Control type                   | Type 1.B                                     |
| Diameter of wiring(recommend): | 18AWG to 14AWG SOL/STR copper conductor only |

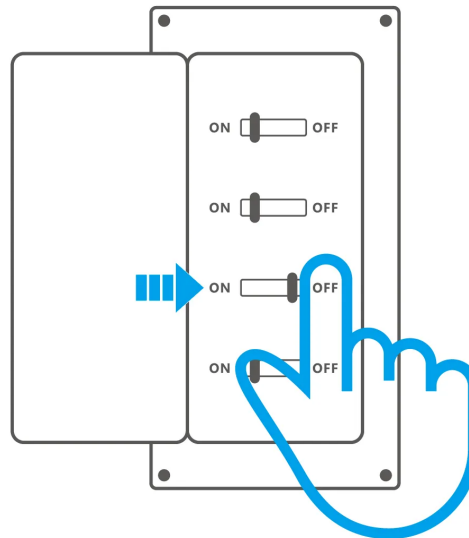
The products is designed to be completely installed into a flush mounted box and enclosed with a cover plate or switch that fullfill the corresponsing national standard requirement. There shall be no exposure of any part of the product after installation.

Les produits sont conçus pour être complètement installés dans une boîte encastrée et enfermés avec une plaque de couvercle ou un commutateur qui remplissent les exigences correspondantes de la norme nationale. Il n'y aura aucune explosion d'une partie quelconque du produit après installation.

\*This product is only suitable for safe use at altitudes below 2000m.

## Installation

### 1. Power off



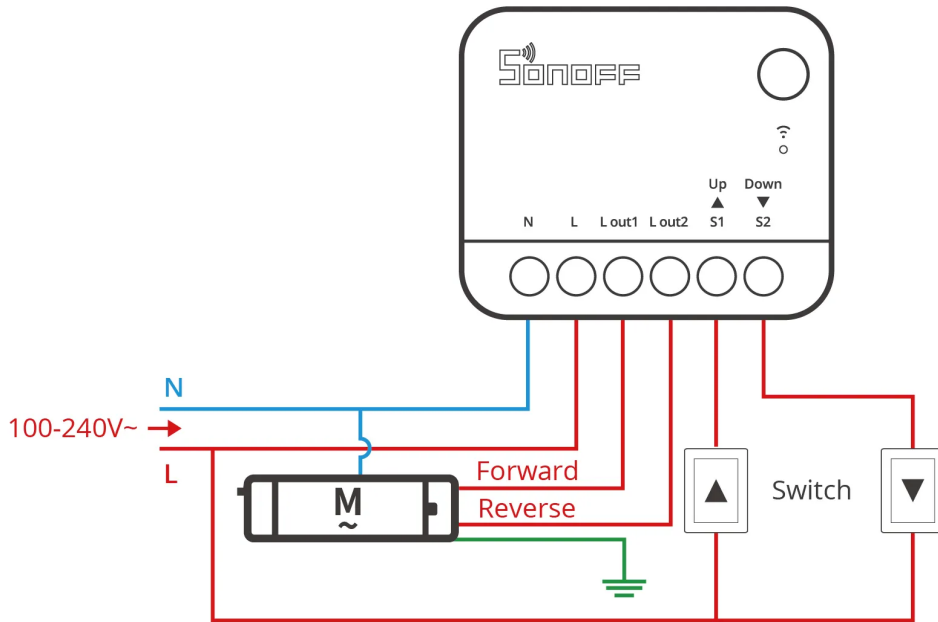
#### WARNING

Please install and maintain the device by a professional electrician. To avoid electric shock hazards, do not operate any connection or contact the terminal connector while the device is powered on!

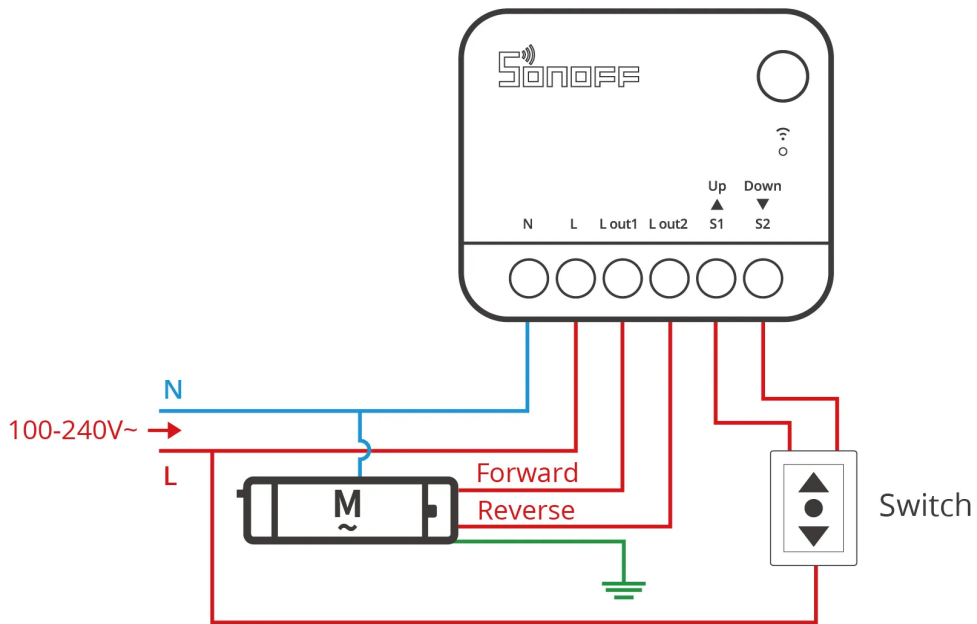
### 2. Wiring instruction

To ensure the safety of your electrical installation, it's essential either a Miniature Circuit Breaker (MCB) or a Residual Current operated Circuit-breaker with Integral Overcurrent protection(RCBO) with an electrical rating of 1A has been installed before the MINI-RBS, MINI-RBS-MS.

### Momentary Switch Wiring:



### Three-Position Rocker Switch Wiring:



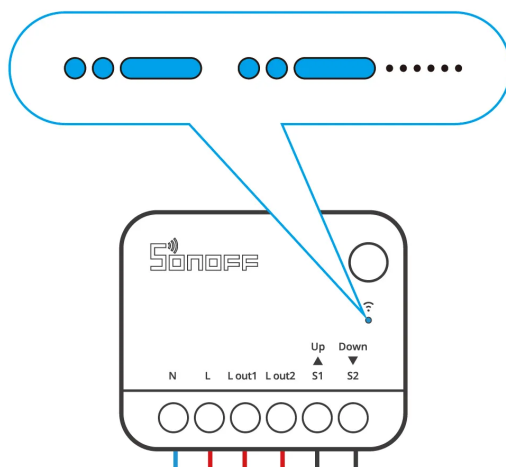
\*Make sure all wires are connected correctly.

### Instructions for wiring symbols

| Terminals |                                   | Wires        |                      |
|-----------|-----------------------------------|--------------|----------------------|
| N         | Neutral Line                      | N            | Neutral Line         |
| L         | Live Line                         | L            | Live Line (100~240V) |
| L out1    | Live Output Terminal__1(100~240V) | Forward Line | Motor Forward Line   |
| L out2    | Live Output Terminal__2(100~240V) | Reverse Line | Motor Reverse Line   |
| S1        | Switch_1 (Forward Control)        |              |                      |
| S2        | Switch_2 (Reverse Control)        |              |                      |

### 3. Power on

When the device is used for the first time, it will enter pairing mode by default after being powered on. At this time, the LED indicator will flash in a pattern of "two short and one long".



\*The device will exit the Pairing Mode if not paired within 10mins. If you want to enter this mode, please long press button for about 5s until the LED indicator changes in a cycle of two short and one long flash and release.

\*As the maximum one-way allowable continuous operation time for the motor in this device is 2mins, please pause the operation before the curtain reaches its limit position to avoid damaging the motor.

## Check the Device Status

### 1. External switch type

- ① The types of external switches supported are three-position rocker switches and momentary switches, with the default setting from the factory being the rocker switch (Edge Mode).
- ② The method to switch the external switch type: Short press the button three times and the blue light flashes 3 times, then the switch type is switched successfully.
- ③ External switch trigger mode switching sequence (cycle): Edge Mode → Pulse Mode → Following Mode

### 2. Roller shutter direction test

Press the external switch to check if the roller shutter moves in the correct direction. If it does not, power off the device, swap the Lout1 and Lout2 wires, and test again.



### Important Prerequisite Confirmation

Please select the appropriate section based on the ecosystem you are using (Matter or eWeLink). Follow the corresponding steps to complete the "Add Device" and "Travel Calibration" operations.

## Matter Ecosystem User Guide

### 1. Add Device

Open a Matter-compatible App to scan the Matter QR code on the Quick Guide or the device itself to add the device.



Add to Apple via  
Matter



Add to Google via  
Matter



Add to Alexa via  
Matter



Add to SmartThings  
via Matter

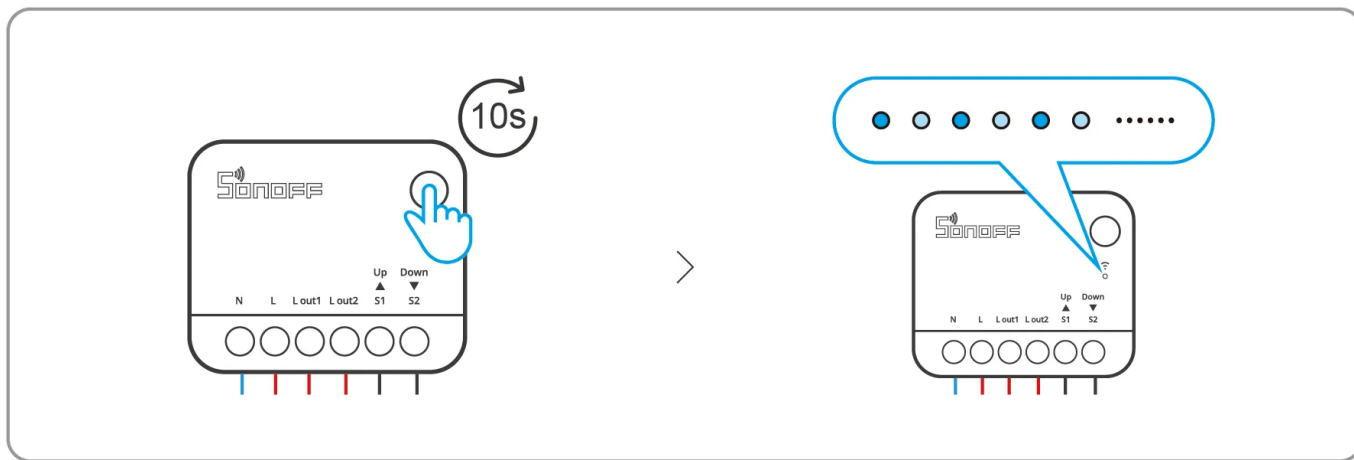
### 2. Travel Calibration

⚠ Using percentage control requires travel calibration. Please select one of the following two calibration options based on your needs.

#### Method 1: Automatic calibration

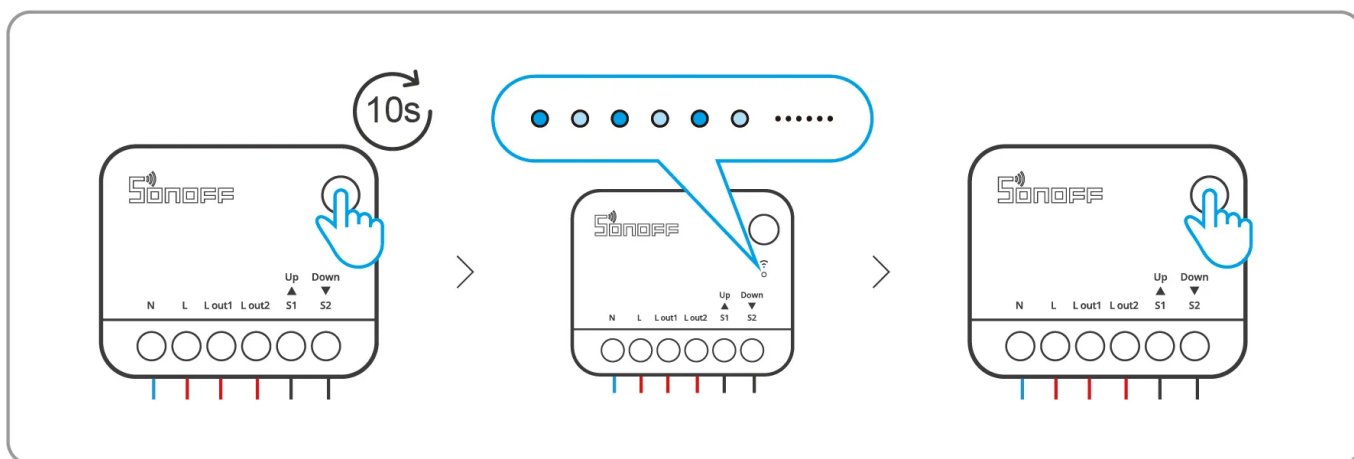
① Press and hold the device button for more than 10 seconds until the LED indicator enters breathing mode. The device will then automatically control the motor for calibration.



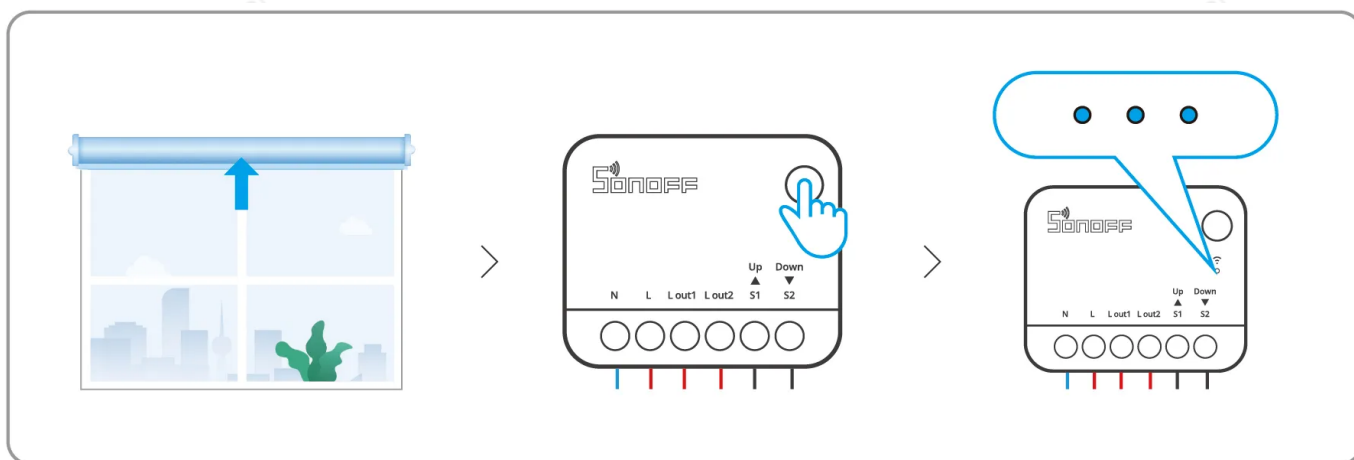


## Method 2: Manual calibration

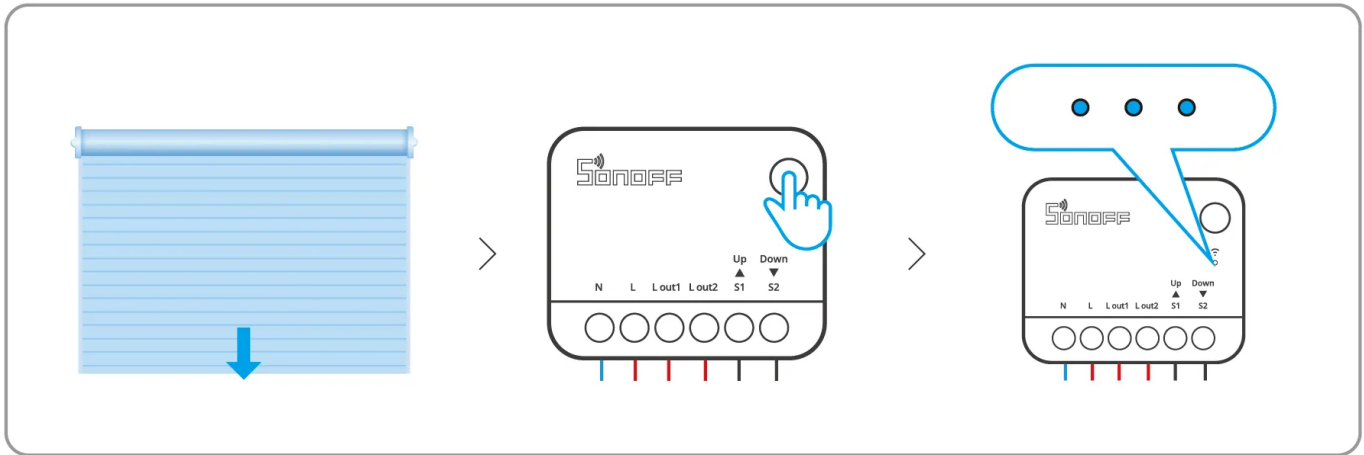
① Press and hold the device button for more than 10 seconds until the LED indicator enters breathing mode. Then, briefly press the device button to enter "Manual Calibration" mode.



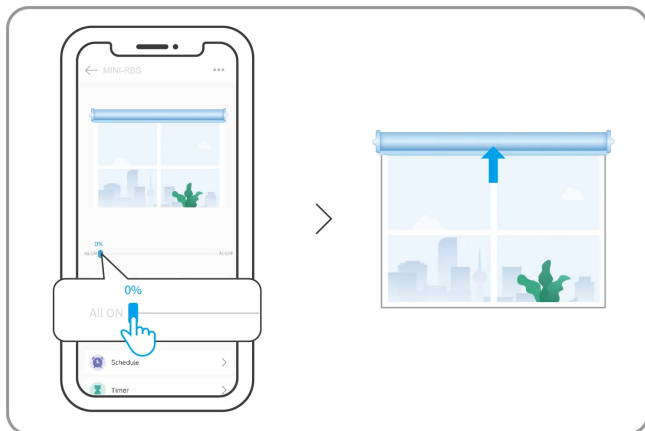
② Manually open the curtains completely, then briefly press the device button until the LED indicator flashes three times.



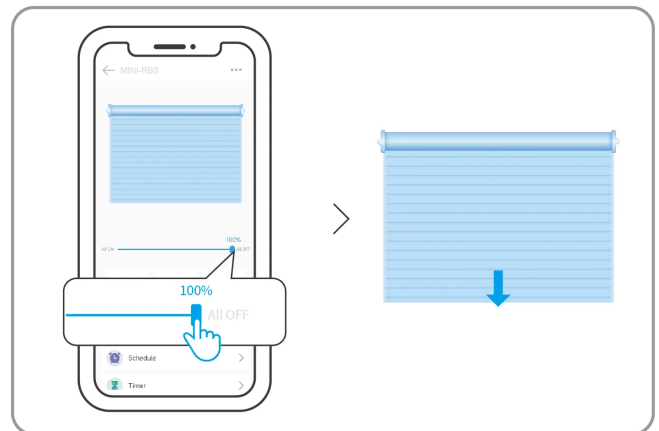
③ Wait for the device to automatically close the curtains, then briefly press the device button again until the LED indicator flashes three times. This completes the "Manual Calibration."



④ Control the device through the App and check the fully open or fully closed positions. If there is any discrepancy, you can recalibrate.



fully open



fully closed

## eWeLink Ecosystem User Guide

### 1. Add Device

#### ① Download the eWeLink App

Please download the "eWeLink" App from [Google Play Store](#) or [Apple App Store](#).