

UTi260T

Quick Start Guide of Pocket Thermal Imager

PREFACE

Thank you for purchasing the new UTi260T Pocket Thermal Imager. In order to use this product safely and correctly, please read this manual thoroughly, especially the Cautions part.

After reading this manual, it is recommended to keep the manual at an easily accessible place, preferably close to the device, for future reference.

LIMITED WARRANTY AND LIABILITY

Uni-Trend guarantees that the product is free from any defect in material and workmanship within one year from the purchase date. This warranty does not apply to damages caused by accident, negligence, misuse, modification, contamination and improper handling. The dealer shall not be entitled to give any other warranty on behalf of Uni-Trend. If you need warranty service within the warranty period, please contact your seller directly.

This warranty is the only compensation you can obtain. Uni-Trend will not be responsible for any special, indirect, incidental or subsequent damage or loss caused by any reason or speculation. As some areas or countries do not allow limitations on implied warranties and incidental or subsequent damage, the above limitation of liability and stipulation may not apply to you.

Cautions

1. Use or store the product at specified operating or storage temperatures to avoid damage.
2. Do not aim the product at strong heat source, such as sun, laser device, spot-welder, etc.
3. Do not knock, toss, or shake the product and accessories.
4. Do not use dissolved or similar liquids on the product or cables.
5. Please follow the following instructions to wipe the device:
Non-optical surface: If necessary, use a clean and soft cloth to wipe the non-optical surface of the thermal imager.
Optical surface: Do not stain the optical surface of the lens when using the thermal imager. Especially not to touch lens with hands, cause it may erode the optical coating layer on the glass surface. When the optical surface is stained, wipe it carefully with a special lens paper.
6. When using the device, please try to keep it stable and avoid violent shaking.
7. Please package device and its accessories into the carrying box if not needed.
8. Please do not disassemble the device avoiding product damage and loss of warranty rights.
9. Due to different batches, the materials and details of actual products may be slightly different from the graphic information. Please refer to the goods received.
10. The experimental data in the manual are theoretical values and all from Uni-Trend's internal laboratories, for reference only. Customers cannot use them as bases for placing orders. If users have any questions, please contact customer service.

Content

1. Product Introduction	15
2. Product Features	15
3. Packing List	15
4. Product Appearance	16
5. Buttons	16
6. Display	16
7. Shortcut Menu	17
8. Menu	18
9. Mobile App	19
10. USB Communication & PC Analysis Software	20
11. FCC Statement	20
12. FCC/IC RF Radiation Exposure and SAR Statements.....	21
13. Others	21

1. Product Introduction

UTi260T is a thermal imager in card style with portable design and multiple functions, equipped with HD capacitive touch screen, convenient operation and high imaging quality. Its unique NFC function, automatically connects Wi-Fi quickly, with professional App and mobile video transmission. Its function of Bluetooth can be connected with meters, such as the Temperature Humidity Meter, and the real-time test data showed.

2. Product Features

- 3.5" HD capacitive touch screen
- Temperature measurement range: -20°C~550°C
- IR resolution: 256×192
- Dual-light lens & Four detection modes
- NFC function: Auto connect Wi-Fi quickly
- Professional App & Real-time video transmission
- Bluetooth connects Temperature Humidity Meter, showing real-time data
- Compact design, easy to carry



3. Packing List

Items	Quantity
Infrared Thermal Imager	1
USB Cable	1
Hand Strap	1
Quick Start Guide	1

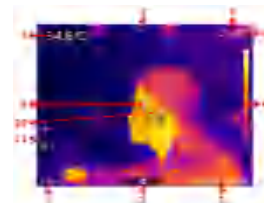
4. Product Appearance



5. Buttons

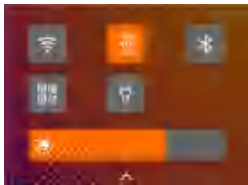
Buttons	Current Status	Short Press	Long Press
 POWER	Power Off	/	Power On
	Power On	/	Power On
	Fusion Mode of Main Interface	Calibration	/
 PHOTO CAPTURING	Main Interface	Photo Capturing	Video Recording
	Video recording	Stop Recording	/
	Not Main Interface	Return to Main Interface	/

6. Display



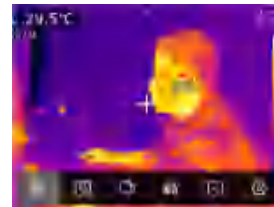
No.	Descriptions	No.	Descriptions
1	Magnification	7	Pull shortcut menu down
2	Menu (Collapsed)	8	Center spot temperature
3	Date & Time	9	Center spot
4	Range bar	10	Hi spot
5	Battery	11	Lo spot
6	NFC		

7. Shortcut Menu



Wi-Fi	Turn on/off Wi-Fi. Search Wi-Fi of device through mobile and connect APP.
NFC	Turn on/off NFC, automatically connect Wi-Fi of device when the mobile phone touched it, with mobile App ON and real-time video transmission.
Bluetooth	Turn on/off device and the Bluetooth function needed to be connected, real-time data showed when the connection succeeded. (currently UT333 BT supported)
QR Code	Turn on/off QR code, classifying the images/videos in the gallery.
Light	Turn on/off light.
Brightness	Adjust screen brightness through touching the screen.

8. Menu



Camera modes	Thermal, Visual image, Fusion (T-Mix), PIP
On screen analyzer	Analysis graphics adding (5 Points/1 Line/3 Rectangles/3 Circles, all up to 6), temperature data contrast, and graphics delete are supported.
Palettes	White Hot, Red Hot, Ironbow, Black Hot, Rainbow HC, Rainbow, Lava
Isotherm	Auto//Manual/Above/ Below/Section/ Out of section
Gallery	Check images (Details, Edit, Note, QR Code, Delete), Video (Details, Note, QR Code, Delete), New gallery created (Remark, Rename, QR Code, Delete, Images added/ Video shared).
Settings	Temperature mark, Alarm settings, Measurement parameters, System settings.
System settings	Languages: Chinese/English
	Wi-Fi hotspot: Modify hotspot frequency band (5G, 2.4G), Wi-Fi name/password.
	Bluetooth: ON/OFF
	Temperature Range: -20°C~150°C/100°C~550°C
	Distance Unit: m/yd

	Temperature Unit: °C/°F
	USB: Storage/ USB Projection (Used with PC software)
	Date & Time
	Auto power off: OFF/5min/10min/20min/ 30min/45min/60min/90min.
	Version: Storage/Model/Infrared Resolution/ Software/Firmware/System.
	Factory Reset

9. Mobile App

Step 1

For iOS devices, search & download "Thermal Link" from Apple Store, or scan the following QR code.

For Android devices, download & install "Thermal Link" from Uni-Trend official website, or scan the following QR code.



iOS



Android

Step 2

- Turn on Wi-Fi hotspot on the device.
- Search hotspot name "UTi260T" on your mobile phone.
- Connect the hotspot by entering the password 12345678.
- Enter the App to get the function of real-time screen transmission, remote viewing and images download, etc.

Note: Please keep the connection range within 10m and no obstacles to ensure the stable data transmission.

10. USB Communication & PC Analysis Software

1. Refer to the Download Guide to download and install the PC software.
2. Connect the USB cable with computer to navigate images and analyze data via the PC software.
3. Refer to the Software User Manual in the Help option to get help about how to use the PC software.
4. Do not unplug the USB cable when in the USB communication before cutting off the connection between device and computer correctly (Cutting off the connection is in the lower right side of the computer).

11. FCC Statement:

Changes or modifications to this unit not expressly approved by the party responsible for compliance could void the user's authority to operate the equipment.

This device complies with Part 15 of the FCC Rules. Operation is subject to the following two conditions: (1) this device may not cause harmful interference, and (2) this device must accept any interference received, including interference that may cause undesired operation.

NOTE: This equipment has been tested and found to comply with the limits for a Class B digital device, pursuant to Part 15 of the FCC Rules. These limits are designed to provide reasonable protection against harmful interference in a residential installation. This equipment generates uses and can radiate radio frequency energy and, if not installed and used in accordance with the instructions, may cause harmful interference to radio communications.

However, there is no guarantee that interference will not occur in a particular installation. If this equipment does cause harmful interference to radio or television reception, which can be determined by turning the equipment off and on, the user is encouraged to try to correct the interference by one or more of the following measures:

- Reorient or relocate the receiving antenna.
Increase the separation between the equipment and receiver.
- Connect the equipment into an outlet on a circuit different from that to which the receiver is connected.
- Consult the dealer or an experienced radio/TV technician for help.

12. FCC/IC RF Radiation Exposure and SAR Statements

The device has been tested for body-worn Specific Absorption Rate (SAR) compliance.

The FCC/IC has established detailed SAR requirements and has established that these requirements.

RF Exposure Information The radio module has been evaluated under FCC Bulletin C95.1 and IEEE 1528 and found to be compliant to RF Exposure from radio frequency devices. This model meets the applicable government requirements for exposure to radio frequency waves. The highest reported SAR level for usage near the body (0mm) is 0.736 W/kg.

13. Others

Indoor use

Pollution degree: 2

Altitude \leq 2000m

3.7V 1800mAh Lithium-ion Polymer battery

USB Input: 5V/2A

Relative humidity: 10%-95%, non-condensing

Operating temperature: -10°C~50°C

Storage temperature: -20°C~60°C

* This guide is subject to change without prior notice.*

UNI-T®**UNI-TREND TECHNOLOGY (CHINA) CO., LTD.**

No. 6, Gong Ye Bei 1st Road,
Songsshan Lake National High-Tech Industrial
Development Zone, Dongguan City,
Guangdong Province, China
Tel: (86-769) 8572 3888
www.uni-trend.com