

ERIA®

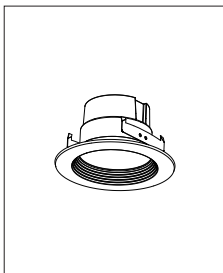
USER MANUAL
4" RECESSED SMART LIGHT
MULTI-COLOR



The ERIA Recessed Smart Light offers a range of 16 million colors and 50,000 white shades, allowing you to set the lighting for any occasion. They can be easily controlled remotely through your smartphone/tablet or voice control via your favorite voice assistants.

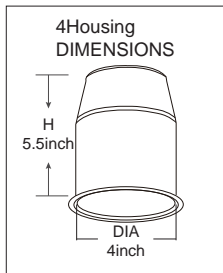
Included

Recessed Smart Light



Excluded

Recessed Fixture Can

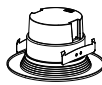


Safety instructions.



INSIDE THE BOX*

SUITABLE FOR TYPE IC OR NON-IC LUMINAIRES.



A



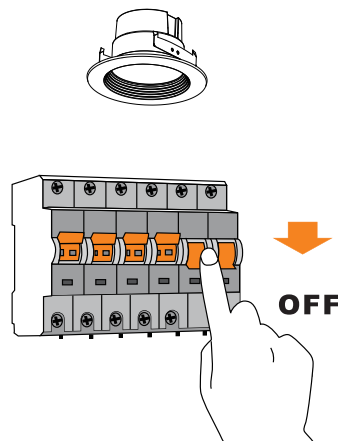
B

Part	Description
A	Recessed Smart Light
B	Edison socket adapter.

Model	Input Voltage	Wattage	Lumen
89863	110-130V, 50/60Hz	10W	850

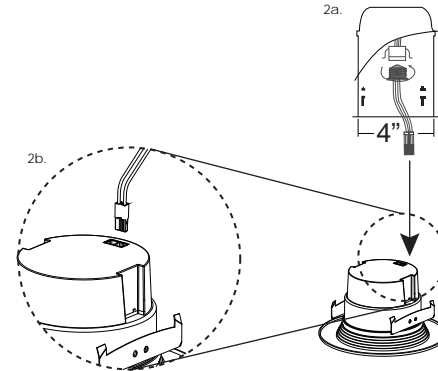
RECESSED SMART LIGHT INSTALLATION INSTRUCTIONS

1. Before you proceed, turn off the power to the lights you are installing at the main circuit breaker or fuse panel.

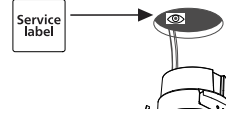


2a. Locate the socket in the recessed can and screw the E26 base into the socket, using the connector cable included in the product package.

2b. Plug the connector at the end of the cable into the base of the recessed smart light.



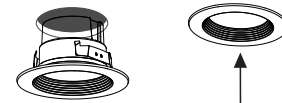
3. Adhere the service label in a visible space inside the metal fixture.



4. Push the springs together, then insert them into the receiving bracket inside the metal fixture.

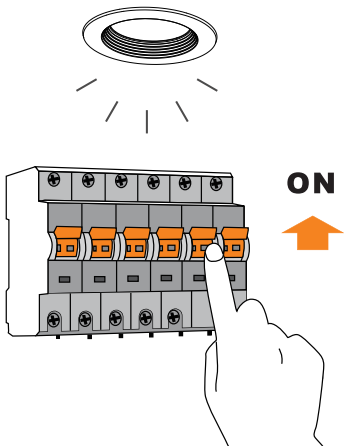


5. Push the recessed light into the can so it is flush with the ceiling.



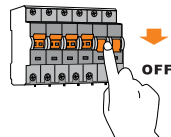
6. Finally, turn on the power to the light you have installed at the main circuit breaker or fuse panel.

The recessed light is now ready to pair with your smart home devices.



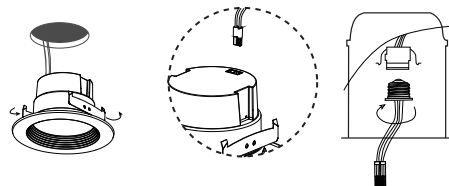
TO UNINSTALL YOUR SMART LIGHT:

1. Turn off the power to the lights you are installing at the main circuit breaker or fuse panel.



2. Pull the recessed smart light down until you can reach the springs. Unhook the springs from the receiving bracket and slide the light out of the fixture.

Finally, disconnect the cable from the base of the smart light and unscrew the E26 base from the socket to completely remove the light.



WARNING - Risk of fire or electric shock. Install this kit only in luminaires that have the construction features and dimensions shown in the photographs and/or drawings and where the input rating of the retrofit kit does not exceed the input ratings of the luminaire.

Do not make or alter any open holes in an enclosure of wiring or electrical components during kit installation.

WARNING -To prevent wiring damage or abrasion, do not expose wiring to edges of sheet metal or other sharp objects.

Please examine all parts that are not intended to be replaced by the retrofit kit for damage and replace any damaged parts prior to installation of the retrofit kit.

THIS DEVICE IS NOT INTENDED FOR USE WITH EMERGENCY EXITS or NOT FOR EMERGENCY LIGHTING

SUITABLE FOR TYPE IC OR NON-IC LUMINAIRES

This lamp is only compatible with provided or other specified controls listed in these instructions for proper functionality. This lamp will not operate properly when connected to a standard incandescent dimmer or other off-shelf dimming controls.

The ERIA Recessed Smart Light is designed to install into most recessed can fixtures. However, please be aware that it may not be compatible with some models. Always ensure a secure fit into the can and ensure that the ERIA Recessed Smart Light fits firmly against the ceiling and does not sag out of the fixture.

This product is rated for 110-130 V use. However, do not install this product directly on branch circuits over 120V in the United States. The US National Electrical Code does not permit connecting Medium lampholders directly to branch circuits greater than 120 volts.* or equivalent.

TWO-YEAR LIMITED WARRANTY

Warrant this product to be free from defects in material and workmanship for three years from the original date of purchase by the consumer. This warranty is limited to the counter replacement at the time of purchase, with the original purchase receipt, will not be liable for the loss or damage of any kind, whether based on warranty contract or negligence, and arising in connection with the sale, use or repair of the product claimed to be defective, some states do not allow the exclusion or limitation of incidental or consequential damages so the above limitation may not apply to you. This warranty gives you specific legal rights and you may also have other rights, which vary from state to state. Misuse, accident, improper installation or maintenance will also void the warranty.

This device complies with part 15 of the FCC Rules. Operation is subject to the following two conditions:
(1) This device may not cause harmful interference, and (2) this device must accept any interference received, including interference that may cause undesired operation.

NOTE: This equipment has been tested and found to comply with the limits for a Class B digital device, pursuant to part 15 of the FCC Rules. These limits are designed to provide reasonable protection against harmful interference in a residential installation. This equipment generates, uses and can radiate radio frequency energy and, if not installed and used in accordance with the instructions, may cause harmful interference to radio communications. However, there is no guarantee that interference will not occur in a particular installation. If this equipment does cause harmful interference to radio or television reception, which can be determined by turning the equipment off and on, the user is encouraged to try to correct the interference by one or more of the following measures:
- Reorient or relocate the receiving antenna.
- Increase the separation between the equipment and receiver.
- Connect the equipment into an outlet on a circuit different from that to which the receiver is connected.
- Consult the dealer or an experienced radio/TV technician for help.
Warning: Changes or modifications not expressly approved by the party responsible for compliance could void the user's authority to operate the equipment.

The distance between user and products should be no less than 20cm.

Contact us
Aduro Technologies LLC
475 WASHINGTON BLVD, MARINA DEL REY,
CA 90292, USA
TEL: (424)363-3420
Email: support@adurosmart.com
Website: www.adurosmart.com

ERIA®

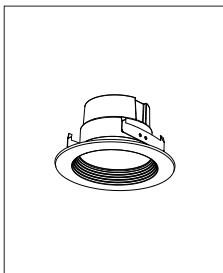
USER MANUAL
4" RECESSED SMART LIGHT
TUNABLE WHITE



The ERIA Recessed Smart Light allows you to select from 50,000 whites shades for any occasion. It can be easily controlled remotely through your smartphone/tablet or voice control via your favorite voice assistants.

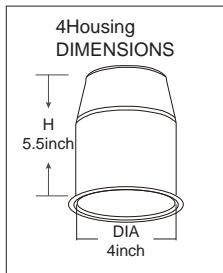
Included

Recessed Smart Light



Excluded

Recessed Fixture Can

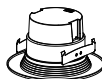


Safety instructions.



INSIDE THE BOX*

SUITABLE FOR TYPE IC OR NON-IC LUMINAIRES.



A



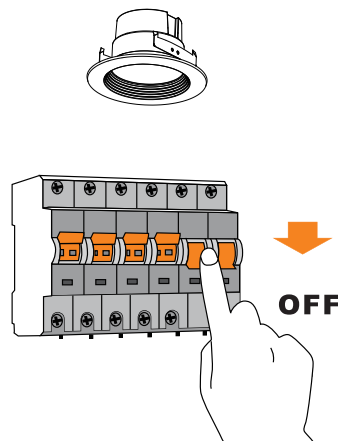
B

Part	Description
A	Recessed Smart Light
B	Edison socket adapter.

Model	Input Voltage	Wattage	Lumen
89843	110-130V, 50/60Hz	10W	850

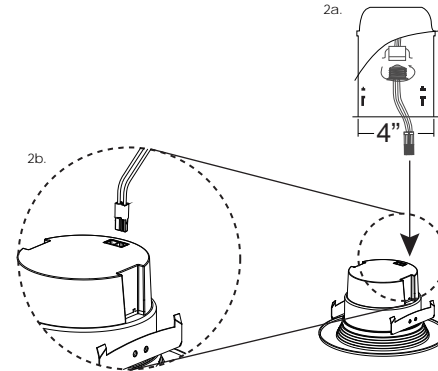
RECESSED SMART LIGHT INSTALLATION INSTRUCTIONS

1. Before you proceed, turn off the power to the lights you are installing at the main circuit breaker or fuse panel.

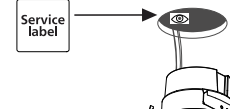


2a. Locate the socket in the recessed can and screw the E26 base into the socket, using the connector cable included in the product package.

2b. Plug the connector at the end of the cable into the base of the recessed smart light.



3. Adhere the service label in a visible space inside the metal fixture.



4. Push the springs together, then insert them into the receiving bracket inside the metal fixture.

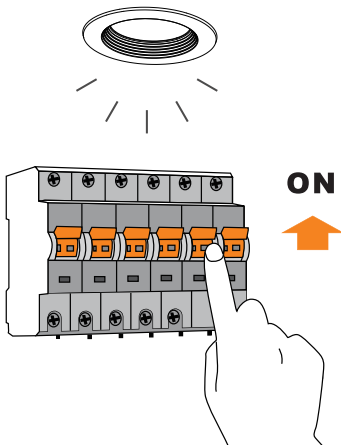


5. Push the recessed light into the can so it is flush with the ceiling.



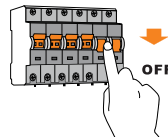
6. Finally, turn on the power to the light you have installed at the main circuit breaker or fuse panel.

The recessed light is now ready to pair with your smart home devices.



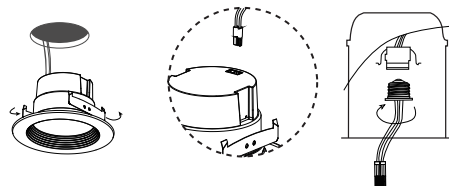
TO UNINSTALL YOUR SMART LIGHT:

1. Turn off the power to the lights you are installing at the main circuit breaker or fuse panel.



2. Pull the recessed smart light down until you can reach the springs. Unhook the springs from the receiving bracket and slide the light out of the fixture.

Finally, disconnect the cable from the base of the smart light and unscrew the E26 base from the socket to completely remove the light.



WARNING - Risk of fire or electric shock. Install this kit only in luminaires that have the construction features and dimensions shown in the photographs and/or drawings and where the input rating of the retrofit kit does not exceed the input ratings of the luminaire.

Do not make or alter any open holes in an enclosure of wiring or electrical components during kit installation.

WARNING -To prevent wiring damage or abrasion, do not expose wiring to edges of sheet metal or other sharp objects.

Please examine all parts that are not intended to be replaced by the retrofit kit for damage and replace any damaged parts prior to installation of the retrofit kit.

THIS DEVICE IS NOT INTENDED FOR USE WITH EMERGENCY EXITS or NOT FOR EMERGENCY LIGHTING

SUITABLE FOR TYPE IC OR NON-IC LUMINAIRES

This lamp is only compatible with provided or other specified controls listed in these instructions for proper functionality. This lamp will not operate properly when connected to a standard incandescent dimmer or other off-shelf dimming controls.

The ERIA Recessed Smart Light is designed to install into most recessed can fixtures. However, please be aware that it may not be compatible with some models. Always ensure a secure fit into the can and ensure that the ERIA Recessed Smart Light fits firmly against the ceiling and does not sag out of the fixture.

This product is rated for 110-130 V use. However, do not install this product directly on branch circuits over 120V in the United States. The US National Electrical Code does not permit connecting Medium lampholders directly to branch circuits greater than 120 volts.* or equivalent.

TWO-YEAR LIMITED WARRANTY

Warrant this product to be free from defects in material and workmanship for three years from the original date of purchase by the consumer. This warranty is limited to the counter replacement at the time of purchase, with the original purchase receipt. will not be liable for the loss or damage of any kind, whether based on warranty contract or negligence, and arising in connection with the sale, use or repair of the product claimed to be defective, some states do not allow the exclusion or limitation of incidental or consequential damages so the above limitation may not apply to you. This warranty gives you specific legal rights and you may also have other rights, which vary from state to state. Misuse, accident, improper installation or maintenance will also void the warranty.

This device complies with part 15 of the FCC Rules. Operation is subject to the following two conditions:
(1) This device may not cause harmful interference, and (2) this device must accept any interference received, including interference that may cause undesired operation.

NOTE: This equipment has been tested and found to comply with the limits for a Class B digital device, pursuant to part 15 of the FCC Rules. These limits are designed to provide reasonable protection against harmful interference in a residential installation. This equipment generates, uses and can radiate radio frequency energy and, if not installed and used in accordance with the instructions, may cause harmful interference to radio communications. However, there is no guarantee that interference will not occur in a particular installation. If this equipment does cause harmful interference to radio or television reception, which can be determined by turning the equipment off and on, the user is encouraged to try to correct the interference by one or more of the following measures:

- Reorient or relocate the receiving antenna.
- Increase the separation between the equipment and receiver.
- Connect the equipment into an outlet on a circuit different from that to which the receiver is connected.
- Consult the dealer or an experienced radio/TV technician for help.

Warning: Changes or modifications not expressly approved by the party responsible for compliance could void the user's authority to operate the equipment.

The distance between user and products should be no less than 20cm.

Contact us
Aduro Technologies LLC
475 WASHINGTON BLVD., MARINA DEL REY,
CA 90292, USA
TEL: (424)363-3420
Email: support@adurosmart.com
Website: www.adurosmart.com