

7 ft PRE-LIT MICROBRITE SNOW DUSTED ALPINE

model no. CTI151-8409 | www.noma.com

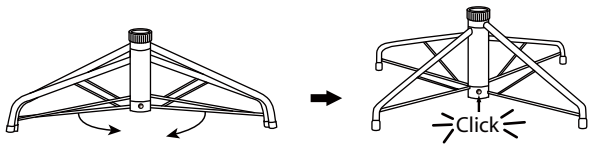
IMPORTANT: Please read this manual carefully before assembly and save it for reference.

TREE ASSEMBLY INSTRUCTIONS

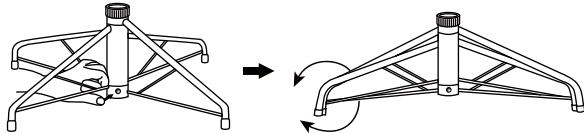
Carefully follow the instructions below to quickly and easily set up your tree.

1. Before you start to assemble your tree, choose an appropriate location near a wall outlet. Do not plug the adapter into the wall outlet until all of the below steps are completed.
2. First assemble the tree stand and place on a level surface. (See Fig. A.)

Fig. A - Tree Stand Assembly

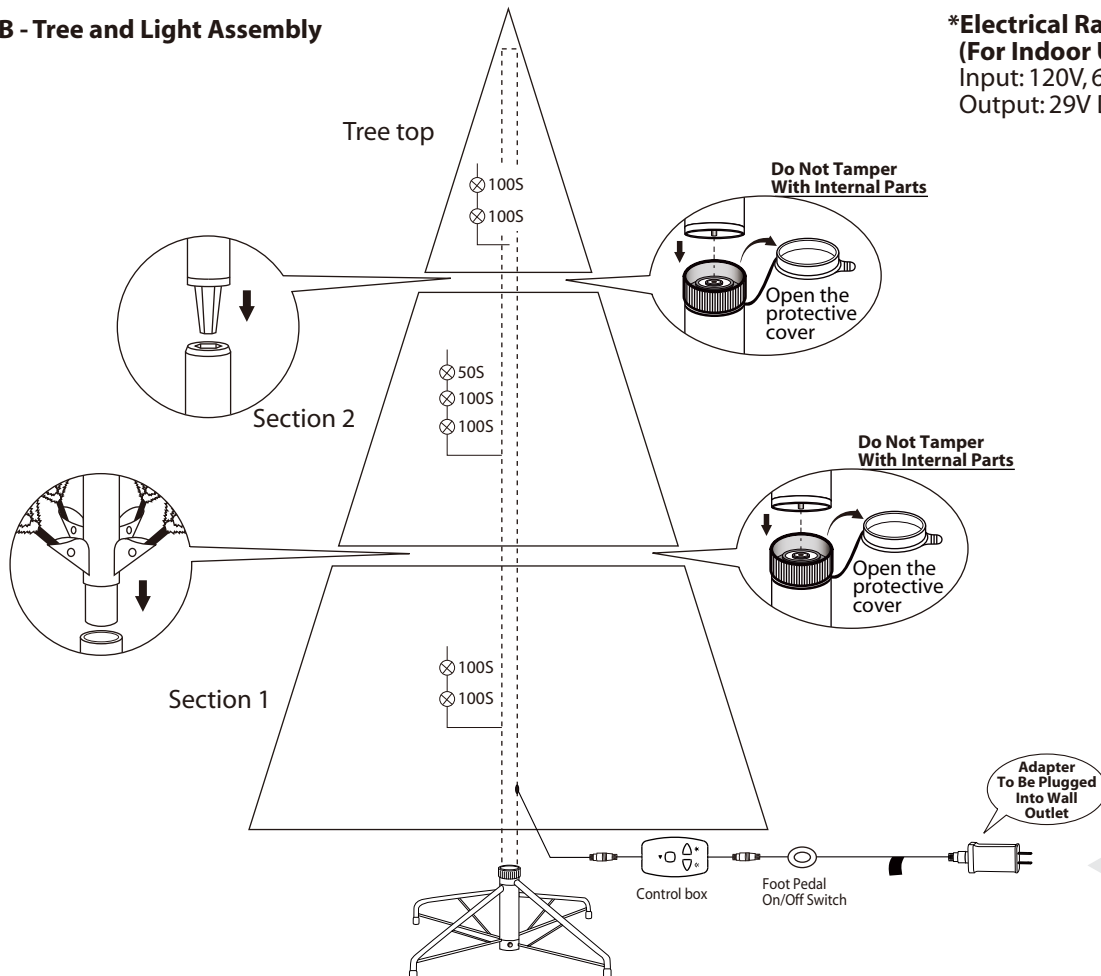


Swivel the legs of the stand until they snap into position. (The legs should be evenly spaced once this step is complete). Place the tree stand on a level surface.



To close the stand, press the metal button and fold the legs together.

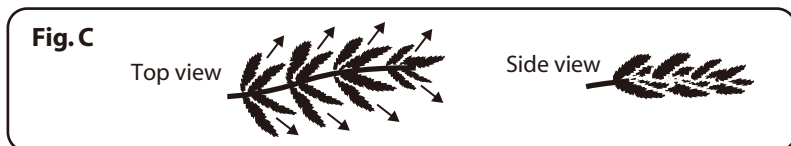
Fig. B - Tree and Light Assembly



***Electrical Rating For The Tree
 (For Indoor Use Only)**
 Input: 120V, 60Hz, 0.38A
 Output: 29V DC 0.621A

3. Each tree section is numbered with a sticker. Please identify all sections before assembling.
4. Assemble the tree from the bottom to the top. Start with the bottom section. Remove the protective cap before inserting it into the already pre-assembled stand. Before proceeding to the next step, make sure the pole is firmly inserted and secured into the stand.
5. Continue by inserting the upper tree section(s) into the lower section(s) until inserting the tree top.

6. Allow branches to fall into place or gently pull up and out. When adjusting branches, be sure that all wires are free of branch hinges.
7. Plug the adapter into the wall outlet (**See Fig. B**). Your entire tree should now be lit.
8. Begin to shape the branches and tips, working from the bottom to the top. Start with tips farthest from the pole and fan out one to the right, one to the left and one at the centre of the main stem (**See Fig. C**.)



9. Once the shaping of the entire tree is completed, slightly upsweep all branch tips so a uniform look may be obtained. Shift branches to fill any gaps. Your Christmas tree is now complete and ready to be decorated.

STORAGE INSTRUCTIONS

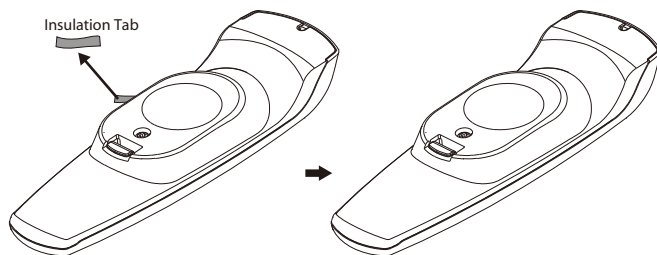
1. For pre-lit trees, first unplug adapter from the wall outlet, remove all ornaments and decorations. Disconnect light cords between each section of the tree.
2. Disassemble the tree from the top to the bottom. Start with the tree top: gently lift straight up to remove from section below, and fold all branches toward the pole.
3. In case of difficulty separating the tree pole (trunk), apply a small amount of lubricant at the joint and gently twist the upper pole in both directions. Lift up the upper pole again.
4. Continue by gently lifting straight up each section from the section below and folding all branches toward the pole until the bottom section is removed from the tree stand. Put the protective cap on the poles to avoid damaging the internal parts. (**See Fig. D**)
5. Carefully place all tree sections into shipping box and tape it shut.
6. When not in use, please store your tree in a cool, dry place away from sunlight. Exposing your tree to excessive heat or humidity may damage your tree.
7. Dispose of used batteries per municipal or provincial law.
8. Battery must be recycled or disposed of properly. Dispose of as per the requirements of your local municipality.
9. Keep out of reach of pets and children.



OPERATING INSTRUCTIONS

You can customize the light functions by using either the Light Controller or the Remote Control.

1. Before using the remote control, remove the insulation tab on its rear.
2. Press the Selector Button once on either control and wait for a second to enjoy light effects in the pre-programmed sequence.



Press the Selector Button to select from the 5 preset light effects in the following sequence:

1. **Steady Glow**
2. **Slow Fading**
3. **Fast Fading**
4. **3 Speeds Fading**
5. **Slow Blinking**
6. **Fast Blinking**
7. **3 Speeds Blinking**

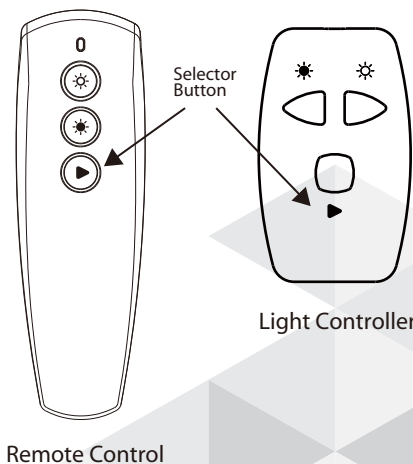
There are 5 brightness levels. Simply press the controller buttons to increase ☀ or decrease ☹ the brightness to your liking.

Default Timer Function:

Lights stay ON for 8 hours and then turn OFF for 16 hours. Timer function will restart when any control button are pressed or main power supply to the lights are reconnected.

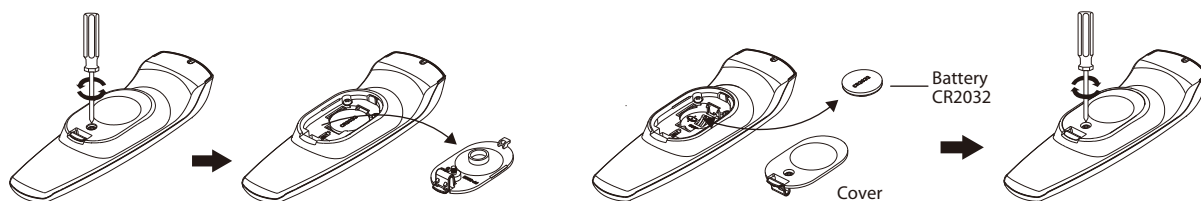
Memory Function:

If you unplug and reconnect the product to the power outlet, the product will resume the last light effect and brightness level that was selected before the power was cut out.



BATTERY REPLACEMENT OF REMOTE CONTROL

1. Loosen the screw of the battery cover with a screwdriver (not included).
2. Replace the used battery with a new CR2032 button cell battery (not included). Make sure that the battery is installed with the correct polarity (+ and -).
3. Retighten the screw to close and secure the battery cover.



⚠ WARNING

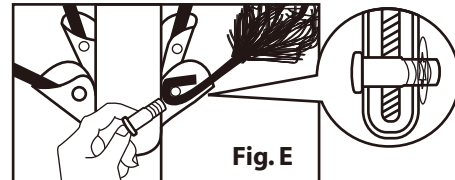
1. This product is powered by a lithium battery. Due to their small size, lithium batteries can easily be swallowed by children. Ingestion of such batteries has been known to cause death.
2. This product contains a lithium battery which if swallowed has been known to cause death.
3. Do not expose light set to moisture.
4. Remove batteries when not used for an extended period of time, or when depleted.
5. Dispose of used batteries properly.
6. Use only CR2032 batteries for the remote controller.
7. Clean the battery contacts prior to battery installation.
8. DO NOT DISPOSE OF BATTERIES IN FIRE. BATTERIES MAY EXPLODE OR LEAK.
9. SMALL PARTS, KEEP BATTERIES OUT OF REACH OF CHILDREN.

For pre-lit trees, if the tree does not illuminate:

1. Please check to make sure that all plugs are properly connected and that the power cord is plugged into the wall outlet. Refer to assembly guide for instructions. (If the tree comes with a foot pedal, try stepping on the ON/OFF button.)
2. When multiple products are connected together, do not exceed the lowest of the indicated maximum wattage on the cord tag near the connected product's receptacle.

Loose Hinge Pin

1. Extra hinge pins are included for repairing the hinges. Place the branch into the slot of the bracket.
2. Insert a new hinge pin through the hole and secure using the retainer washer. (See Fig. E)



SPARE PARTS

Each tree includes hinge pins/washers are also included.
If extra parts are needed, please contact our customer service centre.

CAUTION:

To reduce the risk of fire and electric shock:

- a) Use only the power supply that was provided with this product. Using a different adapter will damage the lights and may cause fire, or electrical shock hazards.
- b) Do not install on trees having needles, leaves or branch covering of metal or materials which look like metal.
- c) Do not mount or support strings in a manner that can cut or damage wire insulation.

This product carries a five (5) year warranty against defects in workmanship and materials. Noma Canada agrees to replace a defective product, within the stated warranty period, when returned to the place of purchase with proof of purchase. This product is not guaranteed against wear or breakage due to misuse and/or abuse.

Made in China
Imported by: CTC Triangle (USA) LLC
14000 24th Street E, Sumner, WA, USA 98390

FCC Warning:

This equipment has been tested and found to comply with the limits for a Class B digital device, pursuant to part 15 of the FCC Rules. These limits are designed to provide reasonable protection against harmful interference in a residential installation. This equipment generates, uses and can radiate radio frequency energy and, if not installed and used in accordance with the instructions, may cause harmful interference to radio communications. However, there is no guarantee that interference will not occur in a particular installation. If this equipment does cause harmful interference to radio or television reception, which can be determined by turning the equipment off and on, the user is encouraged to try to correct the interference by one or more of the following measures:

Note: This equipment has been tested and found to comply with the limits for a Class B digital device, pursuant to part 15 of the FCC Rules. These limits are designed to provide reasonable protection against harmful interference in a residential installation. This equipment generates, uses and can radiate radio frequency energy and, if not installed and used in accordance with the instructions, may cause harmful interference to radio communications. However, there is no guarantee that interference will not occur in a particular installation. If this equipment does cause harmful interference to radio or television reception, which can be determined by turning the equipment off and on, the user is encouraged to try to correct the interference by one or more of the following measures:

- Reorient or relocate the receiving antenna.
- Increase the separation between the equipment and receiver.
- Connect the equipment into an outlet on a circuit different from that to which the receiver is connected.
- Consult the dealer or an experienced radio/TV technician for help.

ISED/C Warning:

This device complies with Innovation, Science, and Economic Development Canada licence-exempt RSS standard(s). Operation is subject to the following two conditions:

- (1) this device may not cause interference, and
- (2) this device must accept any interference, including interference that may cause undesired operation of the device.

Le présent appareil est conforme aux CNR d'Innovation, Sciences et Développement économique Canada applicables aux appareils radio exempts de licence. L'exploitation est autorisée aux deux conditions suivantes :

- (1) l'appareil ne doit pas produire de brouillage, et
- (2) l'utilisateur de l'appareil doit accepter tout brouillage radioélectrique subi, même si le brouillage est susceptible d'en compromettre le fonctionnement.