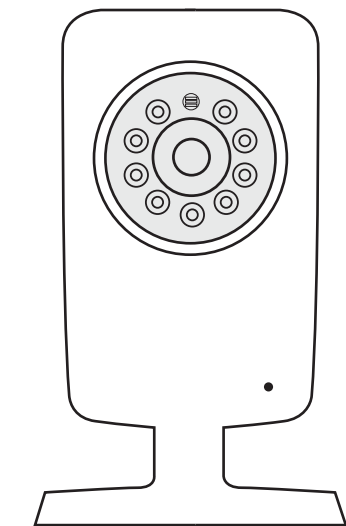


Wi-Fi IP Camera Quick Installation Guide

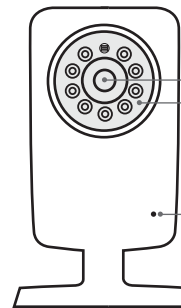


Quick Installation Guide

1. Package Contents

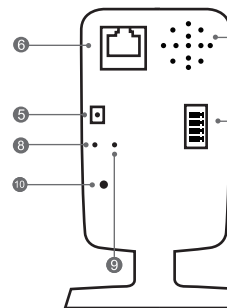
Camera / Mounting Bracket / AC Power Adapter / Mounting Screws / Quick Installation Guide

Front View



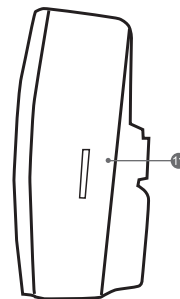
CB-IS-WF-2MP

- 1.LENS
- 2.IR LED
(Night Vision Function)
- 3.Built-in Microphone



4. Built-in Speaker
5. DC5V-IN Socket
6. RJ-45 Network Port
7. Alarm In/Out
8. Power LED Indicator / WPS
9. Network LED Indicator
10. Reset Button

Back View



11. Micro SD Card Slot

3. Network Requirements

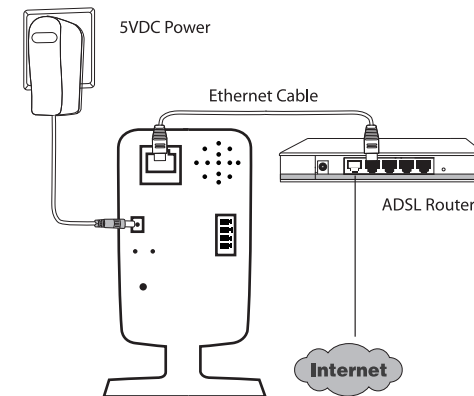
- An ADSL modem with Internet connection.
- A broadband router, preferably with Wi-Fi capability. Please make sure DHCP is enabled on your router.

4. Install the hardware and connect with PC

Before connect camera to the Internet, please check if your router has a WPS button, and then follow the WPS setup. If not (or unsure), please follow the wire setup.

A. Wired setup

- a. Connect a network cable to the network port, which is on the back of Camera and a LAN port of the router.
- b. Then plug the power adapter of Camera to power on the camera.

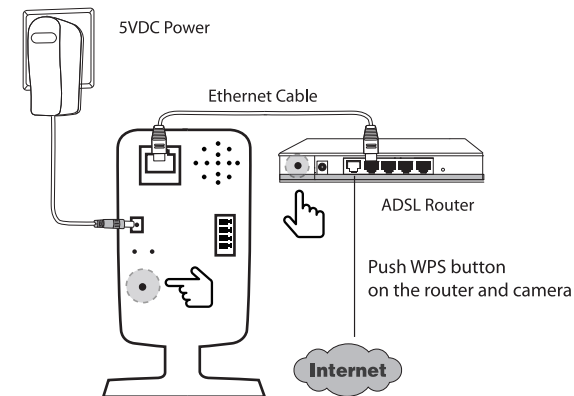


B. Wireless setup via WPS

Note: Please unplug the network cable for Camera WPS setup.

- a. Plug the power adapter and power on your Camera then wait for 40 seconds to boot the camera (operating system).

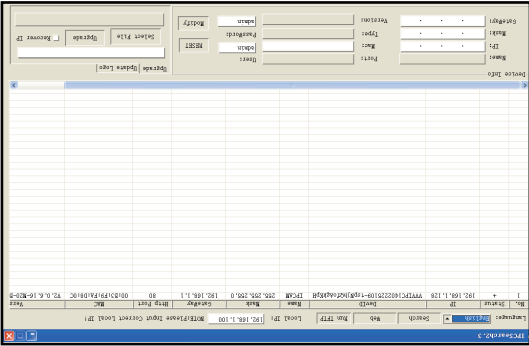
- b. Press the WPS button for 5 seconds until its LED blinks. Then press the WPS button on your router and wait for the Wi-Fi connection to be established.



C. Viewing camera video image through I.E. Browser

- a. Installation of plug-ins and login
When the IE is used for the access to the video camera for the first time, images of the video camera can be previewed as long as plug-ins are installed; and after the login of the IE, the video camera will prompt you to download player automatically. The installation steps are as follows:

(1). Run IE and input the video camera’ s IP address and HTTP port as shown in the following figure.



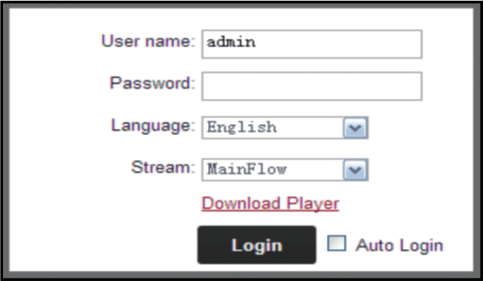
(2). After the successful access to the video camera, a login page will appear, and please input a username and a password (Both the default username and password are admin).

(3). Choose the language you want.

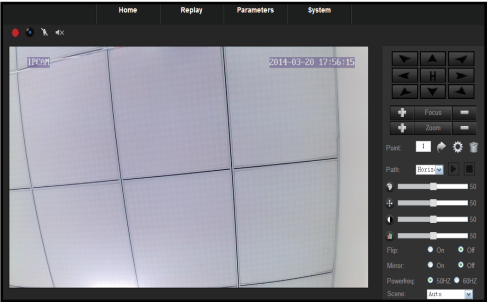
(4). Stream: through this option, you can select to preview the main flow or the minor flow of the video camera.

(5). Click the link ‘Download Player’ to download player for the first time using camera.

(6). After the control is loaded, please log in the video camera again (if you do not want to log in repeatedly, you can select “Auto login”); and images of the video camera are displayed in the page.



(7). You can get Live Video Image.



5. IP Camera Connection via P2P(Optional).

a. Download APP “P2PWIFICAM” from Google Pay / Apple Store or scan QR code to install it.



iOS



Android

b. Open “P2PWIFICAM” and click + to add camera.

c. You can choose “Scan QR code” , “Local Search” , or key-in UID to add the camera (The default password is admin123).

d. Once you have seen the status of your camera is online and then you can watch the live video right away.

FCC Compliance and Advisory Statement

This equipment has been tested and found to comply with the limits for a Class B digital device, pursuant to part 15 of the FCC rules. These limits are designed to provide reasonable protection against harmful interference in a residential installation. This equipment generates, uses and can radiate radio frequency energy and, if not installed and used in accordance with the instructions, may cause harmful interference to radio communications. However, there is no guarantee that interference will not occur in a particular installation. If this equipment does cause harmful interference to radio or television reception, which can be

determined by turning the equipment off and on, the user is encouraged to try to correct the interference by one or more of the following measures:

- Reorient or relocate the receiving antenna.
- Increase the separation between the equipment and receiver.
- Connect the equipment into an outlet on a circuit different from that to which the receiver is connected.
- Consult the dealer or an experienced radion/TV technician for help.

Any changes or modifications not expressly approved by the party responsible for compliance could void the user's authority to operate this equipment.

FCC RF Radiation Exposure Statement:

- 1.This Transmitter must not be co - located or operating in conjunction with any other antenna or transmitter.
- 2.This equipment complies with FCC RF radiation exposure limits set forth for an uncontrolled environment. This equipment should be installed and operated with a minimum distance of 20 centimeters between the radiator and your body.