



Spaceti sensors

(Occupancy - desk, room; Environmental)

User Manual

Information about the product

Manufacturer

spaceti s.r.o.
Přemyslovská 2845/43,
130 00, Prague, Czech Republic
ID: 05137659, VAT: CZ05137659
support@spaceti.com www.spaceti.com

Introduction

Thank you for choosing Spaceti to help you build the office of the future. Our mission is to digitalize spaces and positively influence human interaction within buildings. We aim to increase comfort, productivity, and security while also providing an effective facility management tool.

The Spaceti Sensor (Occupancy Desk or Room; Environmental) is one of three components that make up Spaceti's technology. Occupancy sensors provides information on the occupancy of workplaces and meeting rooms and allowing their reservation at the same time. The environmental sensor can measure temperature, humidity, and air quality in real time.

Package Contents

- Spaceti Sensor (Occupancy Desk or Room; Environmental) (batteries included)
- Installation/deinstallation tool MEC1
- Installation platform

Note: If any of the items are damaged or missing, please contact the retailer where you purchased the product or an authorized service agent.

Copyright and trademarks

The technical specification and all other information in this product manual (referred to just as "Manual" from here on) can change without prior announcements. Spaceti Sensor (Occupancy Desk or Room; Environmental) is trademarked by Spaceti s.r.o.

No portion of this Manual can be reproduced in any way, nor can it be used in a paraphrased or translated form without the expressed consent of Spaceti s.r.o. All rights reserved.

Basic product information

The Spaceti Sensor (Occupancy Desk or Room; Environmental) ("Device") is a component of Spaceti's technology. It is a necessary component both for measuring the occupancy of workplaces and meeting rooms, as well as for measuring the environmental parameters of the environment. Spaceti's system is made up of the hardware device, a mobile application, and a web-based interface. The system requires all the parts to work correctly.

WARNING!

Carefully read this Manual and save it for future use!

The manufacturer is not responsible for defects, accidents, damage, or other risks caused by not adhering to the procedures in this Manual!

The Manufacturer does not guarantee the Device will work properly if it is used or handled in any way that is contrary to the recommended procedures listed in this Manual!

Technical parameters

Power	2x LS14500 lithium metal batteries 3.6 V, 2600 mAh (batteries are included)
Output	Max. 500 mW
Communication frequency	918.5 MHz
Radiation output	918.5 MHz max. +14 dBm
Operation temperature range	(+5; +40) °C
Relative humidity range	(5; 85) %
Weight	110 g
Dimensions	(87 x 96 x 33) mm
Other	PC-ABS fire retardant box (UL94V0)

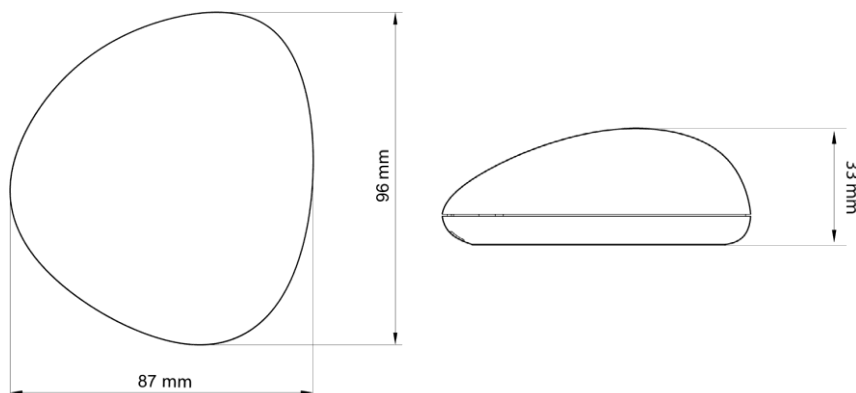


Figure 1

General safety instructions

WARNING!

Carefully read these instructions, memorize them, and save the instructions for future use!

A. Installation

- Installation can only be performed by a trained technician authorized by the Manufacturer ("Technician").
- The Device cannot be installed in direct sunlight, close to a heat source, or a warm air duct.
- The Device requires at least 5 cm of space on all sides in order to operate correctly.

B. Environment

- The Device must not be used in spaces with extreme temperatures. The appropriate range is listed in the technical specifications.
- The space where the Device is located must be well ventilated, especially if the Device is installed in an enclosed or small space.
- Do not install the Device in rooms with extreme humidity or close to water, such as a damp cellar, in an aquarium, or a pool area.

C. Electric safety

- Do not use batteries other than those specified by the Manufacturer in the technical specifications.
- Follow the instructions in Chapter 4 – Changing the Device's Battery to change the batteries.

D. Personal safety

- Do not break the Device.
- Do not hit the Device or allow it to be struck.
- Do not clean with water or any other liquid.
- Do not place the Device into a microwave or any other tool that will warm it up.
- Do not place the Device into open flames, smoke, or other fumes.
- Do not allow the Device or the batteries to be subject to outside pressure.
- Prevent contact between the Device and the batteries and mouths, ears, and eyes. Specifically, do not bite or lick the Device.
- Do not squeeze or stab the Device and prevent it from being deformed.
- Do not expose animals to the Device.

E. Maintenance

- Only the Technician installs, maintains, or removes the Device.
- Use dry tissues, a rag, or a duster to clean the exterior of the Device.

WARNING!

Do not use any detergents, water, solvents, or other liquids or moist cleaning supplies. Be sure to prevent any liquid from leaking into the Device when cleaning the mounting!

The Device must be kept out of the reach of children under the age of 12 or those with limited cognitive functions!

F. Using the device's batteries

- Only use the batteries specified by the Manufacturer
- Never use a damaged or drained battery
- Only a Technician can replace batteries

WARNING!

The Manufacturer is not responsible for any damage to the Device caused by the installation, opening, removal, or any other manipulation of the Device or its accessories by an unqualified individual!

Do not shorten or manipulate the battery clips in any way, do not expose them to liquids of any kind.

If the Device is to be transported, it must be protected in a similar way, especially protection from coming into contact with liquids. It should be mounted on the supplied covers.

Do not allow the battery to come into contact with metallic items because + and – poles could become connected and the battery could be temporarily or permanently damaged.

G. FCC warning

NOTE: This equipment has been tested and found to comply with the limits for a Class B digital device, pursuant to part 15 of the FCC Rules. These limits are designed to provide reasonable protection against harmful interference in a residential installation. This equipment generates uses and can radiate radio frequency energy and, if not installed and used in accordance with the instructions, may cause harmful interference to radio communications. However, there is no guarantee that interference will not occur in a particular installation. If this equipment does cause harmful interference to radio or television reception, which can be determined by turning the equipment off and on, the user is encouraged to try to correct the interference by one or more of the following measures:

- Reorient or relocate the receiving antenna.
- Increase the separation between the equipment and receiver.
- Connect the equipment into an outlet on a circuit different from that to which the receiver is connected.
- Consult the dealer or an experienced radio/TV technician for help.

Changes or modifications not expressly approved by the party responsible for compliance could void the user's authority to operate the equipment.

This device complies with Part 15 of the FCC Rules. Operation is subject to the following two conditions:

1. This device may not cause harmful interference.
2. This device must accept any interference received, including interference that may cause undesired operation.

H. ISED warning

This device complies with Industry Canada's licence-exempt RSSs. Operation is subject to the following two conditions:

1. This device may not cause harmful interference.
2. This device must accept any interference, including interference that may cause undesired operation of the device.

This equipment complies with ISED radiation exposure limits set forth for an uncontrolled environment. This equipment should be installed and operated with a minimum distance of 20cm between the radiator and your body.

Cet appareil est conforme aux RSS (Règlements sur le spectre radioélectrique) sans licence d'Innovation, Sciences et Développement économique Canada (ISED). Son fonctionnement est soumis aux deux conditions suivantes:

1. Cet appareil ne doit pas causer d'interférences nuisibles.
2. Cet appareil doit accepter toute interférence, y compris les interférences pouvant entraîner un dysfonctionnement de l'appareil.

Cet équipement respecte les limites d'exposition aux rayonnements établies par ISED pour un environnement non contrôlé. Cet équipement doit être installé et utilisé avec une distance minimale de 20 cm entre le radiateur et votre corps.

The symbols used:



Read the Manual before using



EU declaration of conformity



Do not throw away



Indor usage only



Federa Communications Commission

I. Notice about using this wireless device.

WARNING!

The Manufacturer is not responsible for interfering with any other radio or television signals nor for any other unwanted effects caused by inappropriate settings or changes made by the user. The Device generates, uses, and can radiate radio frequency energy and if not installed and used in accordance with the instructions can cause damaging interference to radio communication!

Sub-GHz communication channel

The Device uses the open license 918.5 MHz (902 - 928 MHz) band according to general authorization VO-R/10/11.2016-13 for using radio frequencies and on operating short-range devices.

Installation and operation

A. Installing the Device

Only an authorized Technician installs and removes the Device.

WARNING!

The user is obligated to ensure the installation of the Device is permitted (especially the wireless technologies and Sub-GHz communication channels) before installation and operation or to procure permission from the authorized individual (most often the property owner or manager) to ensure that no limitations on using such technologies in the planned Device installation area are violated. The Manufacturer is not responsible for any damage caused by installing or using the Device in areas without permission or if the Device was not installed by an authorized Technician!

B. Operating the Device for the first time

Upon installation, the technician will activate “turn on” switch using a special tool. This will connect the batteries to the circuit and the Device will begin to operate. **Error! Reference source not found.** shows the position of the switches.

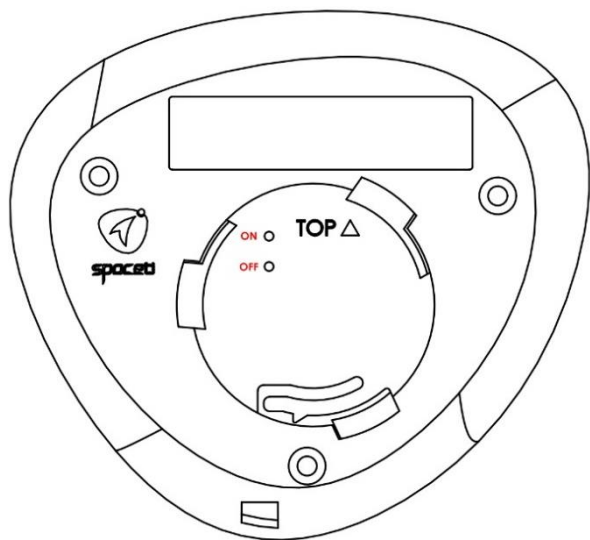


Figure 2

C. Operating the Device and replacing the battery

The Technician replaces the battery during regular maintenance visits. The Technician decides whether it is necessary to replace the battery. If they are both to be replaced, both batteries will be replaced at once and the same type of battery from the same producer will be installed.

WARNING!

Under no circumstances can a battery with specifications different from those listed in the technical specifications be used. See Chapter 2 – Information about the Device. It is forbidden to re-charge the battery! It is forbidden to dispose of used batteries in the trash. Used batteries should be delivered to collection points.

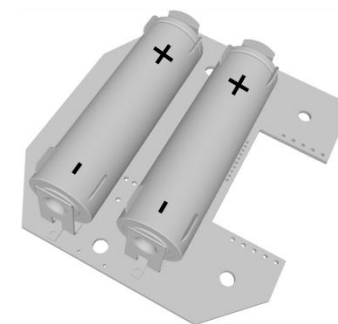


Figure 3

D. Using the Device in a new location

The technician will remove the Device, prepare it for transport, and then re-install the Device using the MEC 1 Clicking tool.

WARNING!

If the user installs the Device without the Technician, or replaces the battery without the Technician, or uses the Device at a new location, the Manufacturer is not responsible for any damages that could be caused, neither to the Device, nor in the unauthorized installation location, nor any possible health damages to individuals!

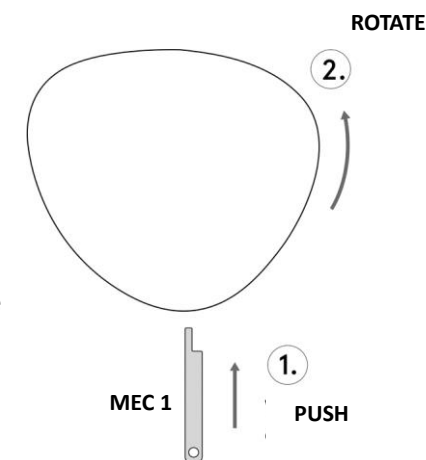


Figure 4



E. Malfunctions

If the Device ceases to work or displays any malfunctions, immediately contact the Technician or the Manufacturer.

F. Handling of electrical or electronic waste

WARNING!

NEVER dispose of the Device or the battery in the trash!

- The Manufacturer states that mixing with normal trash can cause negative effects on the environment and human health.
- Never burn the Device or the battery.
- Never place the Device or the battery into heating equipment.
- Adhere to all general regulations in the given location when removing the used device or battery and place the battery in a designated receptacle.
- The Device will be removed by the Technician and then its parts and materials will be recycled.
- Dispose of the packaging in designated receptacles.

WARNING! Recycle!

If the device will be disposed of outside the European Union, the user is obligated to ensure the Device and battery are disposed of according to the laws and regulations of the given country and to acquire information about the correct method of disposal from the authorities.

G. Contacs and maintenance

Contacting the Manufacturer:

EU: (+420) 800 661 133

US: (+420) 800 997 755

UK: (+420) 800 996 644

Please send any general questions to: support@spaceti.com

General information and details can be found at: www.spaceti.com

spaceti.com