

Camera(NVR&DVR)

2CU0630



The client computer to log on
www.Yoosee.Co

I. Download & install Yoosee APP for phone

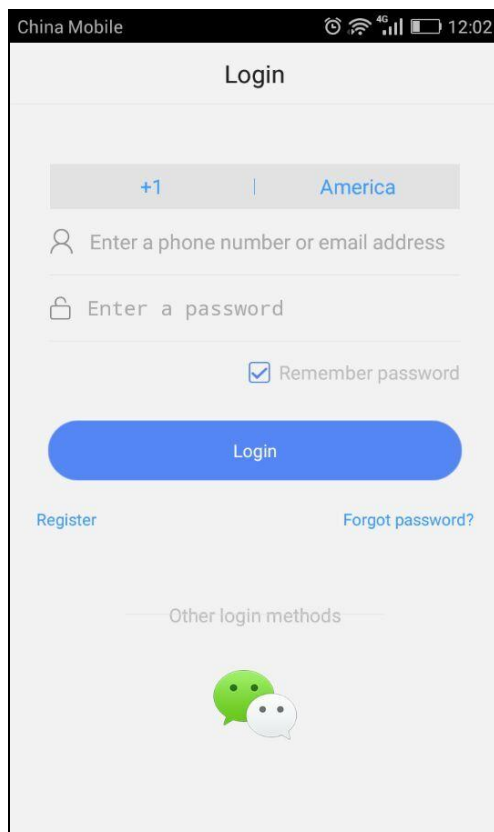
Go to Apple APP Store or Android Google Play and search for Yoosee or you can go to www.yoosee.co to download & install Yoosee then finish registration according to the instructions and log in.

II. Add camera

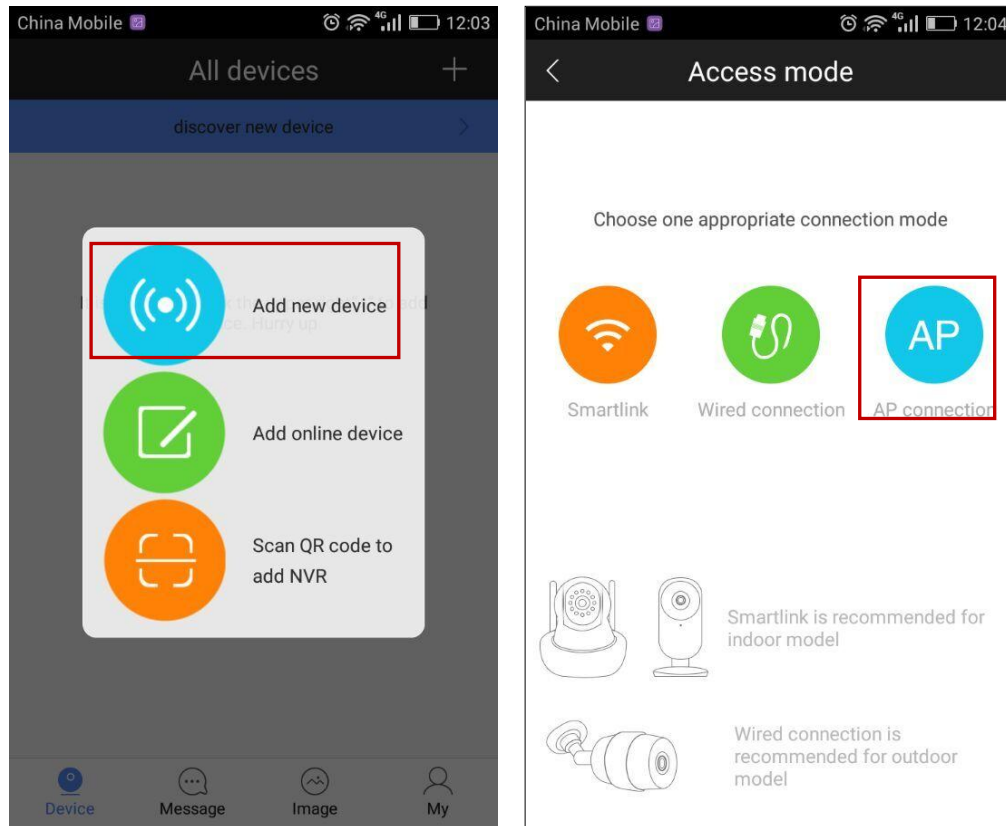
1. Register & log in

App can be registered via phone numbers and e-mail addresses as well as via WeChat.

Note: phone numbers registration is only limited in China currently and also do use true e-mail addresses better for finding forgotten password back in the future.



2. Process of adding new devices



The connection method of Android mobile phone

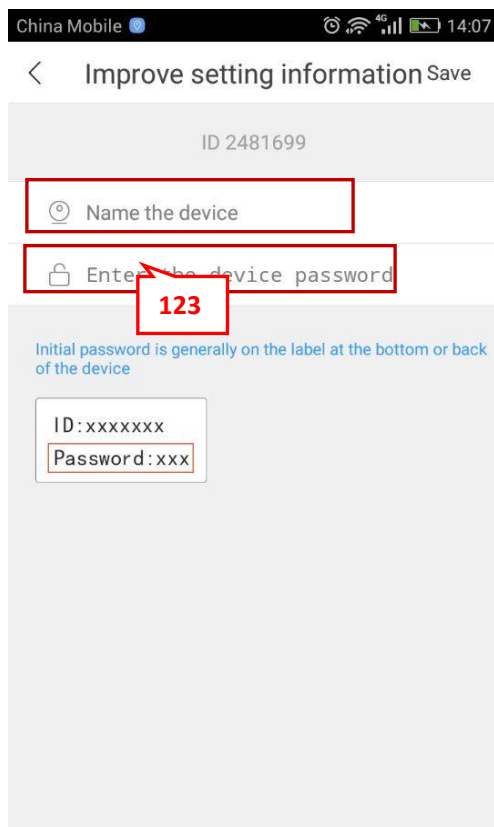
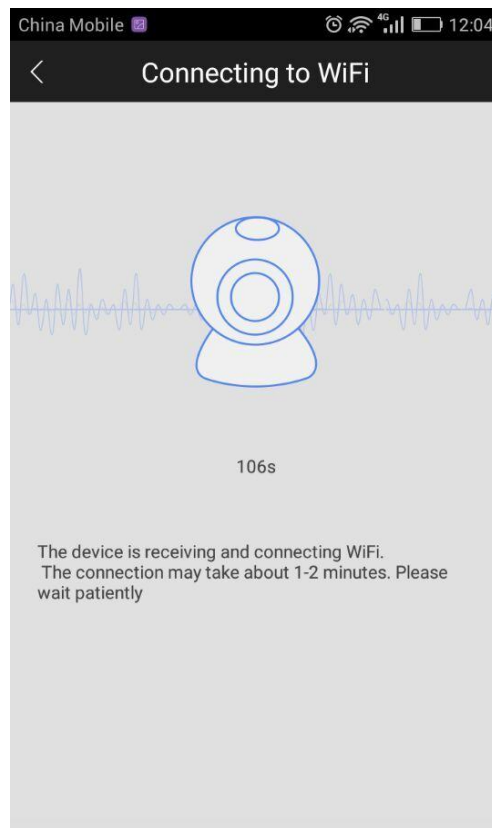
Device needs to be back to initialized status by pressing the “reset” button for 5 seconds when adding new devices.

Two ways for adding device: one is via WiFi, the other is via wire. WiFi adding can be divided into smart link and AP connection.

Method 1: adding via WiFi ,put phone WiFi to connect with wireless router(make sure connected WiFi is 2.4G WiFi as camera is not supported for 5G WiFi) →open Yoosee App→ click”+”on the right upper corner of device listing→select smart link or AP connection.

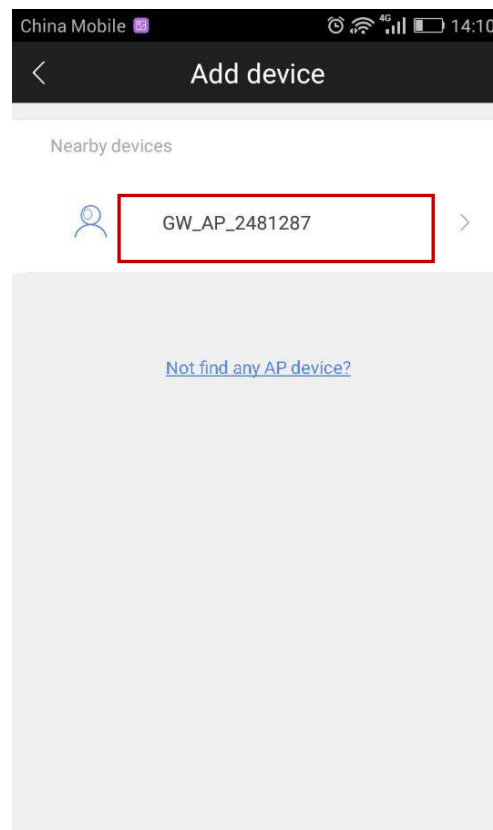
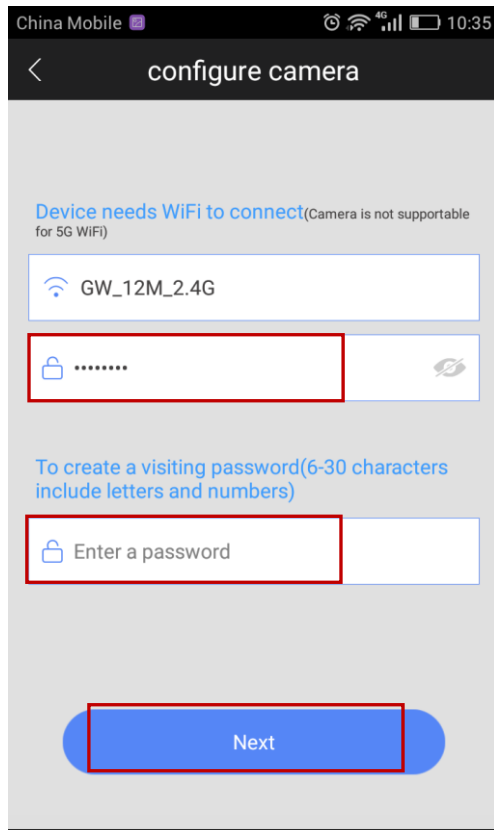
- **Smart link (it might to be failed when adding via this way due to the restriction of certain routers, if fails, you can try to connect with AP connection):**

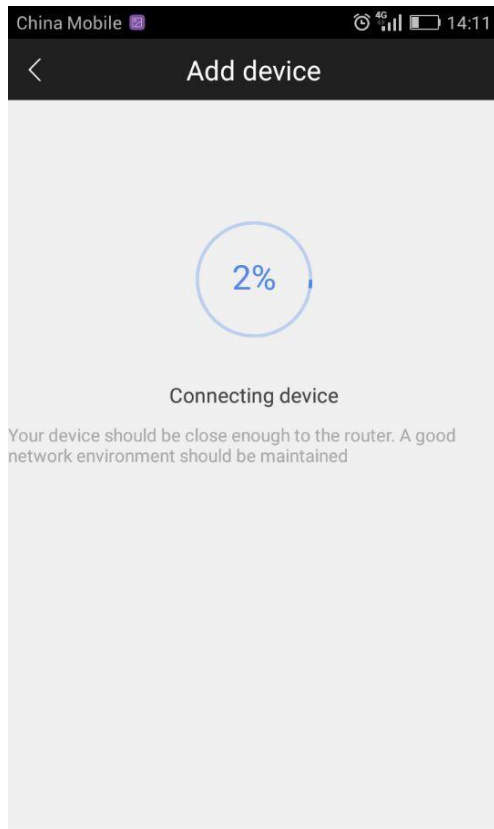
Select smart link→follow up with the instructions→connected WiFi successfully→input device default password (if no, you can create a new password according to instructions) → save & add successfully.



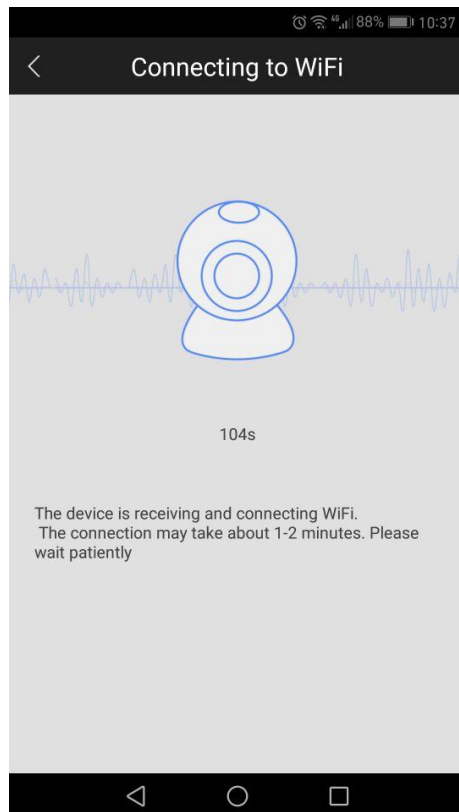
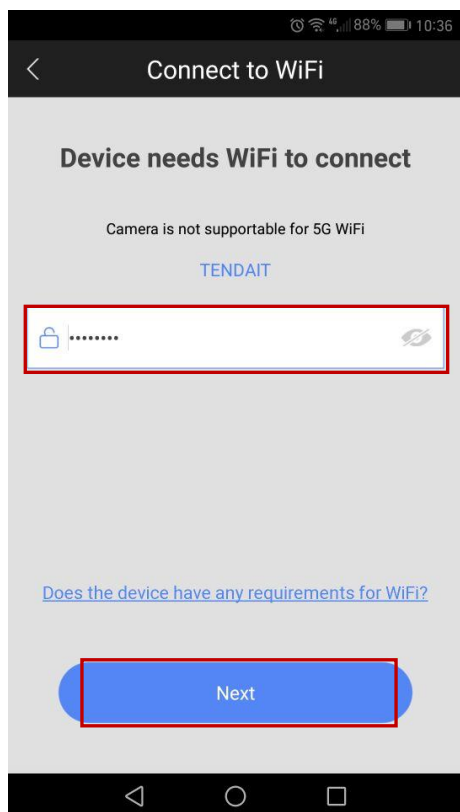
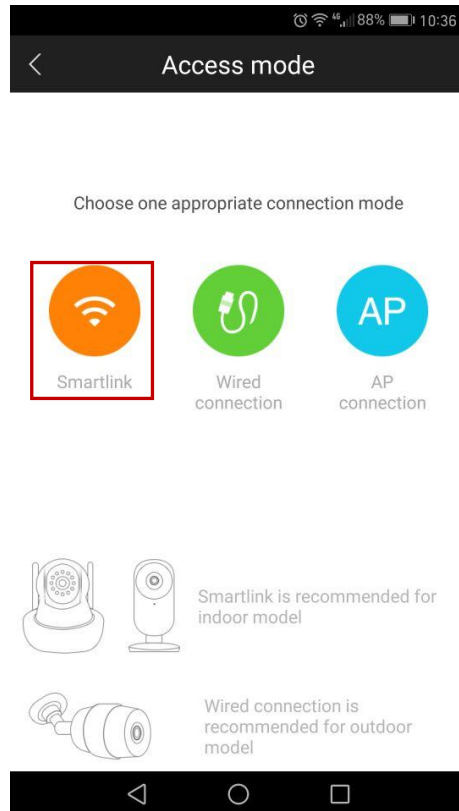
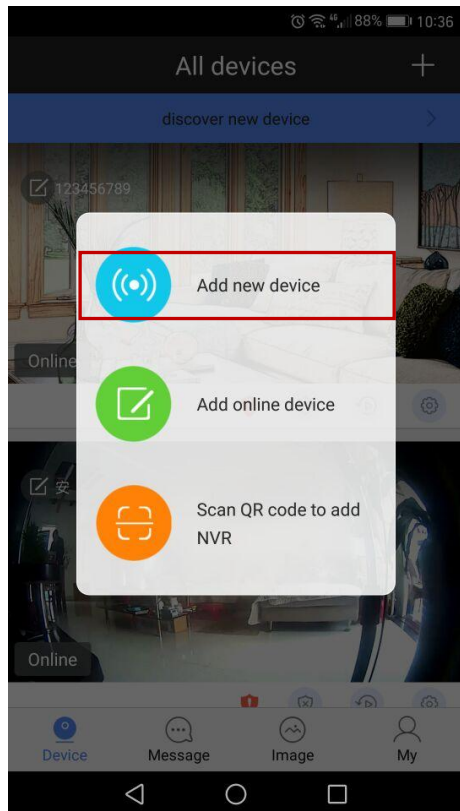
- **AP connection:**

Select AP connection→input the WiFi password asked by device→create visiting password→
click “next step”→enter into interface of “adding device” →select your wanted device
GW-AP-XXX→follow up with the instructions.

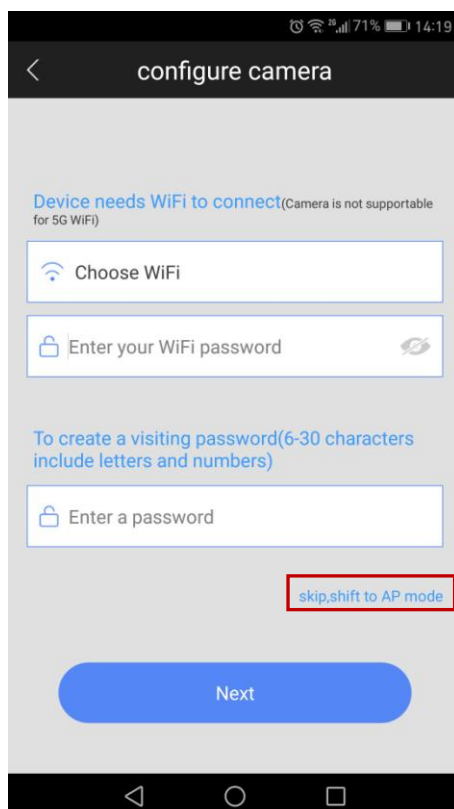
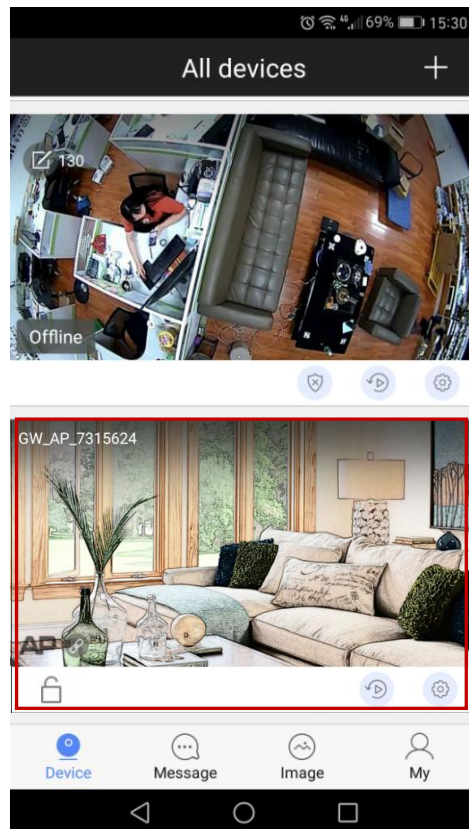




Method 2: wireless router (because the camera wifi does not support 4g wifi), open yoo see, click add button ' + ' in the upper right corner of the device list, select the smart online, select wifi and enter the password, click next to scan, wait a moment to scan the id number, enter a name and password to watch.

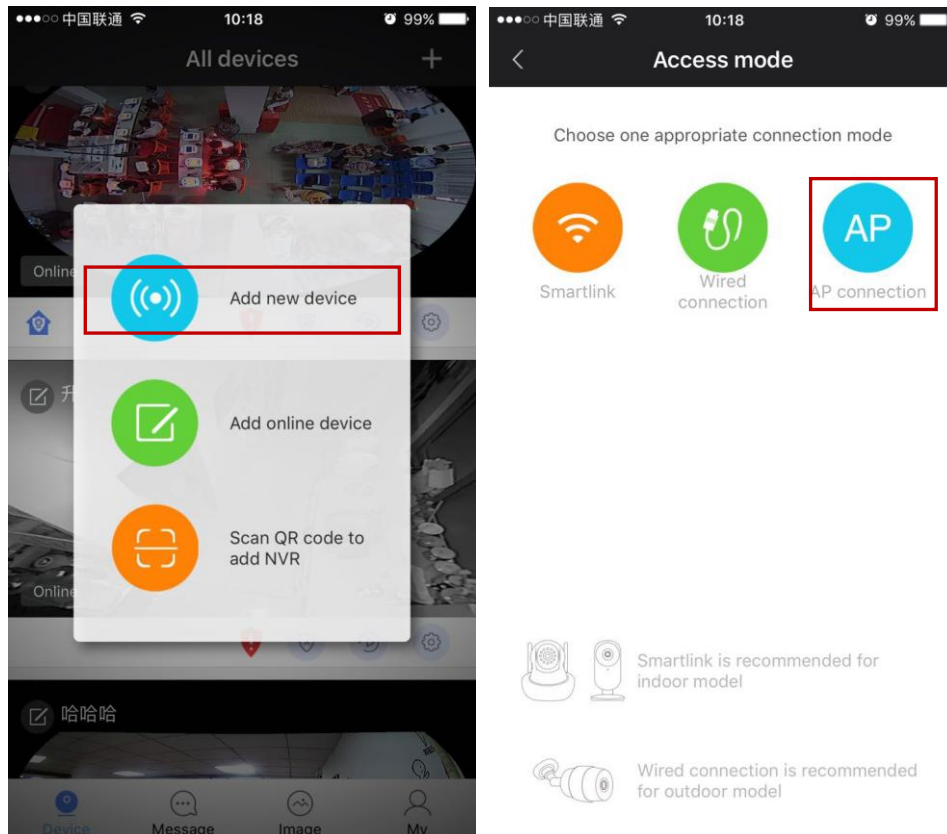


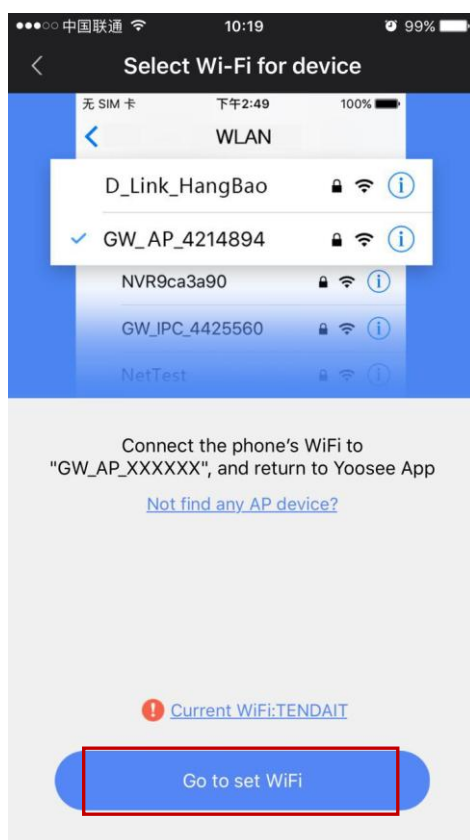
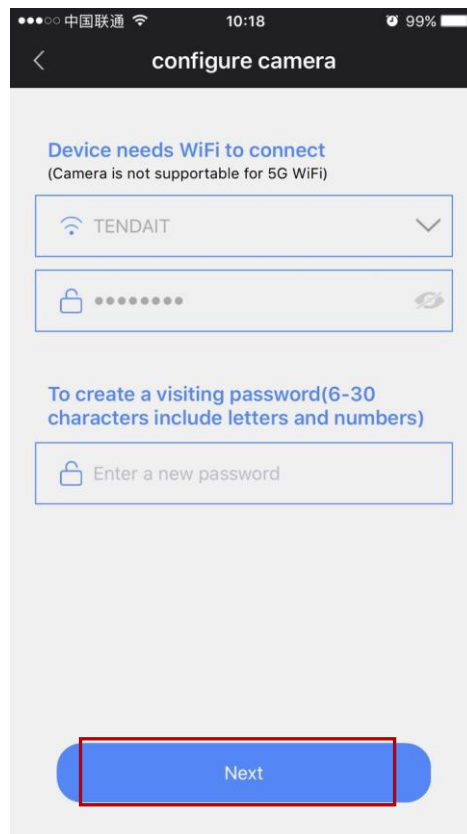
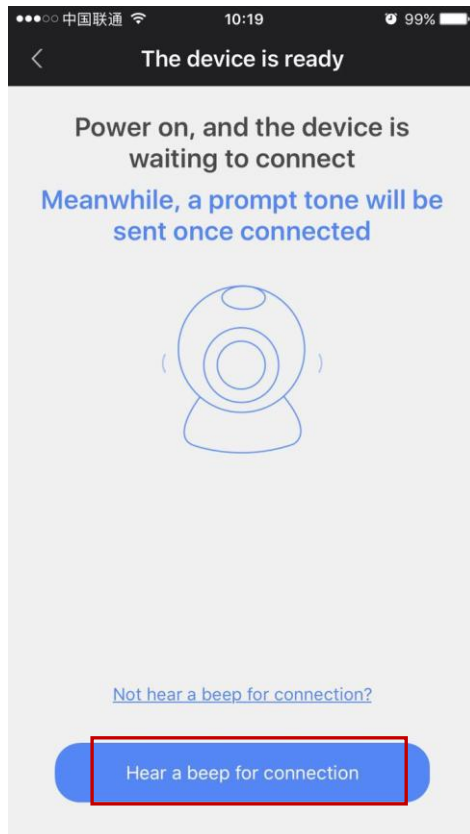
Approach IV: mobile phone connection GW_AP_***** network, open yoosee software, pull to the bottom, and the GW_AP_***** AP device, click on it, click on the lower right corner of the skip switch to the stand-alone mode "to watch.

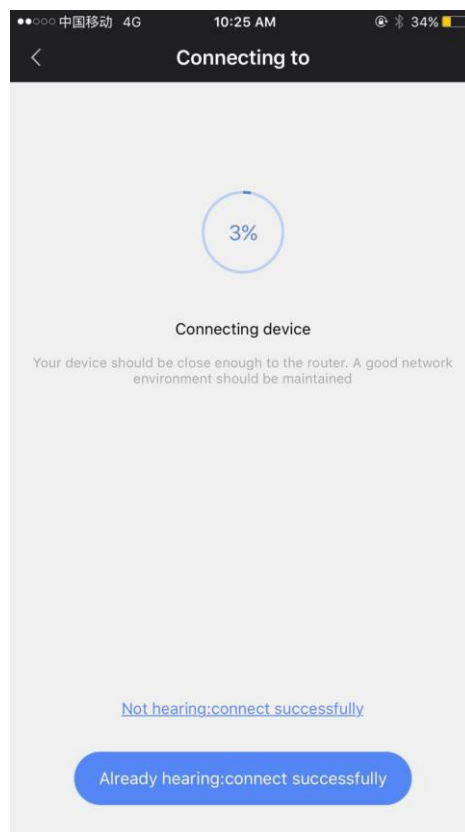


The connection method of apple mobile phone

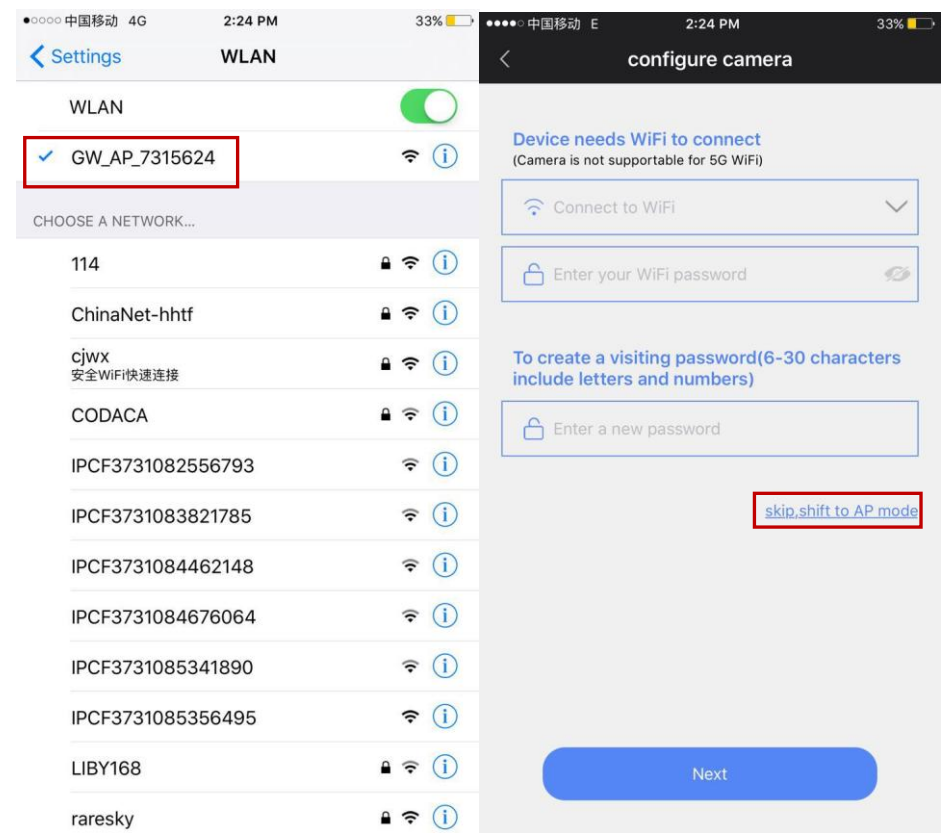
Through wifi add, the mobile phone wifi connected to the wireless router (because the camera wifi does not support 4g wifi), open yoo see, click add button '+' in the upper right corner of the device list, select hot link, select to hear the connect tone, give the device a six password, enter the next step, select to set the button, select the hot point at the beginning of GW _ AP, and connect it. After the connection is successful, select the button to return to the top left corner. Enter a device connection, the device sends a drop of a reminder that the connection is successful, you can watch.



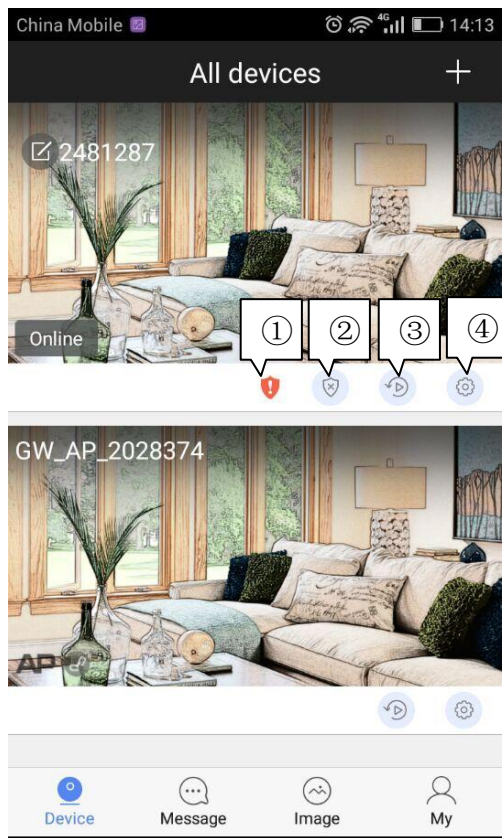




Methods: the cell phone connection GW_AP_***** network, open yoosee software, and the GW_AP_***** AP device, click on it, click on the lower right corner of the skip switch to the stand-alone mode "to watch.



III. Introduction of function buttons

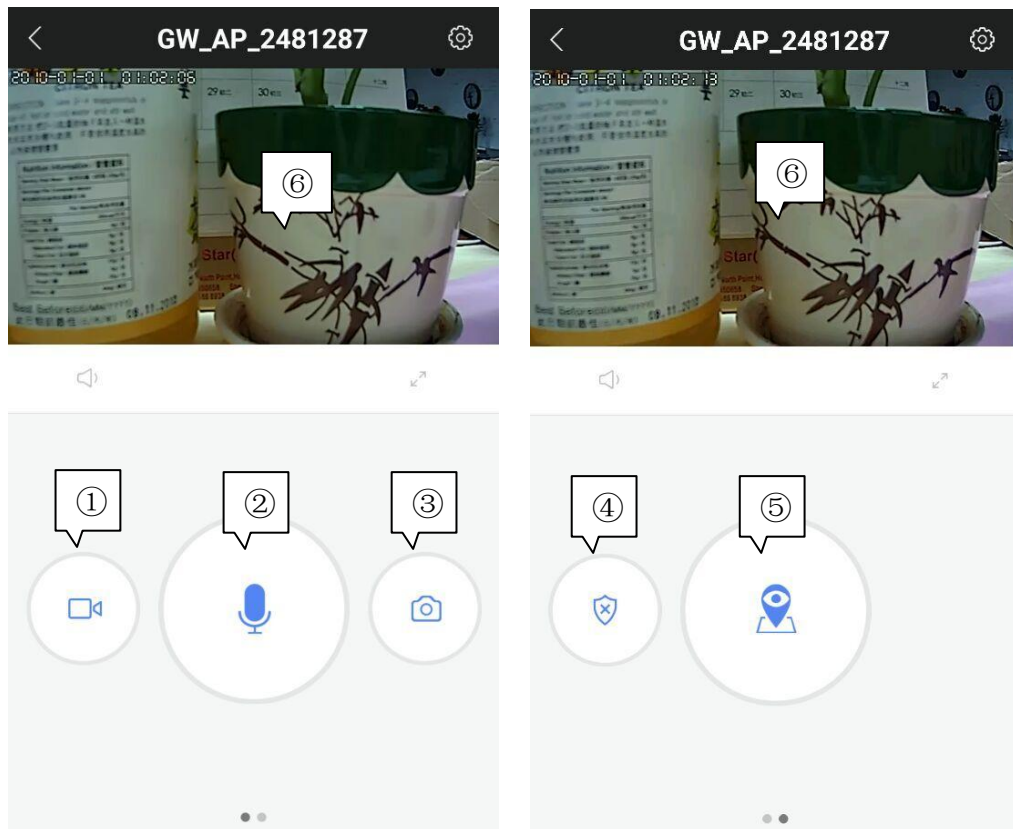


① **Weak password icon:** suggest to revise password when this icon is on.

② **Defense succeeded & disarming succeeded :** deploy must be switch on when using alarm notification and alarm recording.

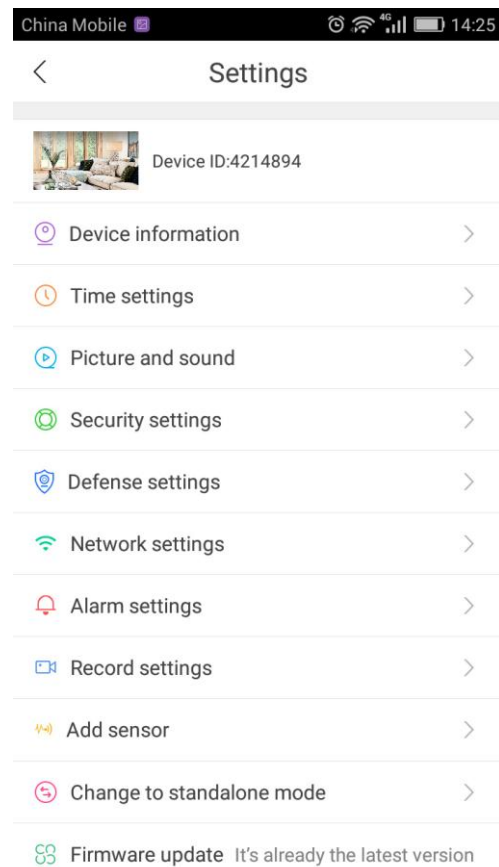
③ **Video playback**

④ **Setting**



- ① **Remote recording**: record videos and save it to phone.
- ② **Intercom system**: press the button and you can talk remotely.
- ③ **Remote capturing**: capture video screenshot and save it to phone.
- ④ **Defense succeeded & disarming succeeded**
- ⑤ **Memory point settings** (it needs firmware support)
- ⑥ You can adjust the monitoring direction with your finger sliding the screen up and down.

IV. Settings



Device information: firmware version. We need to know firmware information when something happens to firmware.

Time settings: set device's time and time zone.

Picture and sound: set device video format、volume、video quality、motion detection sensitivity、reverse image、indicator light and so on.

Security settings: set or revise device administer password and visitor password which is just for monitoring the device and doesn't have any other operating rights.

Defense settings (this function needs device support): set regular plan of deploying & revoking alarm

Network settings: shift between wired & WiFi connection or shift to other WiFi.

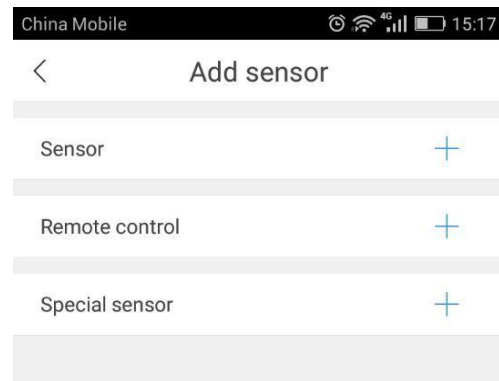
Alarm settings: receive alarm prompt、delete alarm pushing account、bound alarm pushing e-mail、buzzer、motion detection and sensitivity.

Record settings: set record mode---record manually, record alarm, record timer.

Note: motion detection or sensor should be switched on as well as defense succeeded when

using alarm notification and alarm recording.

Add sensor (this function needs device support): it's available to add ordinary sensor (door magnetic, PIR), remoter, special sensor (smoke detector, special gas detector).



Adding methods :click"+” in add sensor interface→confirm→trigger sensor→add successfully.

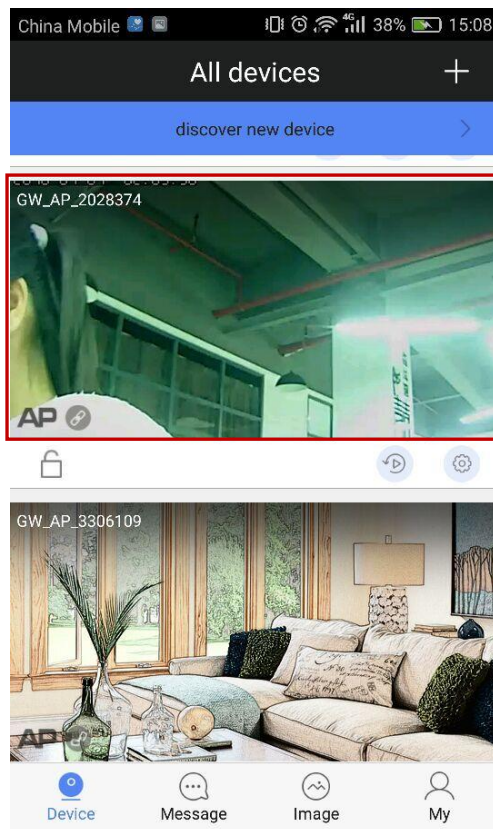
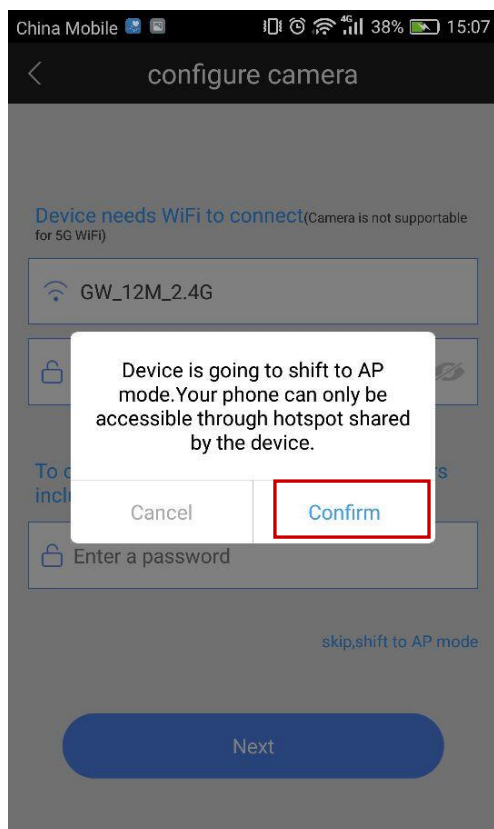
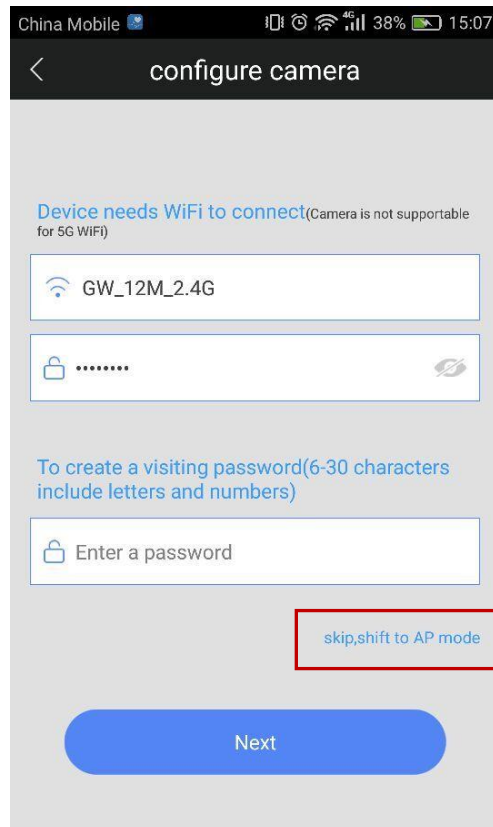
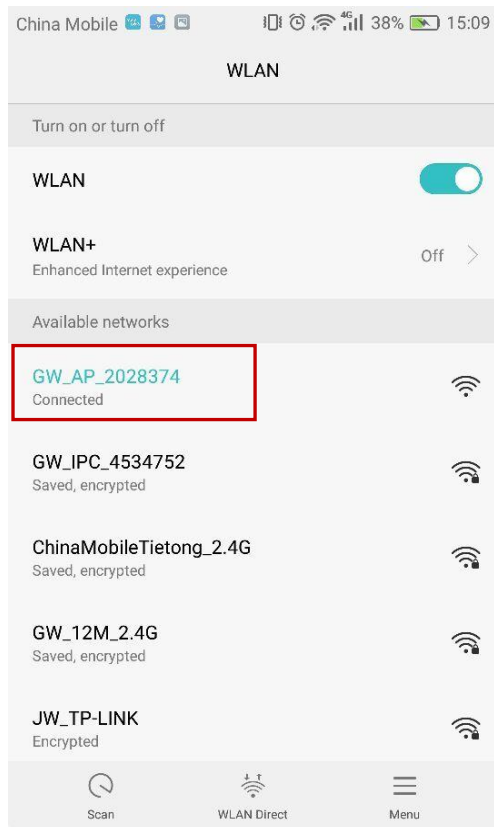
Using case: switch on “receive alarm prompt” in alarm settings after add sensor successfully. And at the same time deploying alarm should be done. Once door magnetic is triggered after deploying alarm successfully, device will send alarm notifications to phone APP.

Firmware update: update & optimize device firmware.

Change to standalone mode (this function needs device support): it applies to the users without using router. You can get through via AP hot WiFi under this mode.

- Users without router can access through device's hot WiFi, details are as follows:

Let device back to the initialized status→connect device's hot WiFi: GW-AP-XXX→back to APP interface of “configuring camera” and click “skip, shift to AP mode” →confirm→find the device



V. FAQ

① Q: Notice wrong password when checking real time videos.

A: Device visiting password probably has been changed by other people but you can enter correct remote visiting password in the popup. If you forgot the password, you can press the “reset” button for a long time and restart.

② Q: It shows device is offline in device listing.

A: Please check whether camera is connected with network properly and network indicator light is always on or not.

Please check whether the router’s network is fine or not.

③ Q: What shall we do if phone APP can’t get any notifications?

A: Check whether alarm items & alarm notifications in alarm settings are switched on and make sure you have deployed alarm successfully. Also whether android backgrounder have been prohibited or not by SafeMgr.

④ Q: What shall we do if motion detection gives misinformation?

A: Update device firmware (above 14.0.07.76) and APP (above 00.46.00.13) so that you can adjust motion detection sensitivity in APP settings or revise configuration files `md_level = 3`(1~6, the smaller, the more sensitive)

⑤ Q: Recorded videos files can’t be searched out on playback.

A: Please check whether SD card is damaged or not.

Please check the search time of recorded files and system time of camera.

⑥ Q: Camera can’t connect with WiFi.

A: Confirm the input password is correct.

Camera is not supported for 5G WiFi, please connect with 2.4G WiFi.

Some items restricted on WiFi access such as AP isolation, Wifi Zone and etc. should be closed.

⑦ Q: AP devices can't be found on Phone WiFi list.

A: Firmware is not supported for this function.

The distance is too far from phone to device.

VI. Acquire more information

This fast guidance will guide you to use your network camera in a very fast way. If you want to acquire more information, please download detailed user guidance or ask technical support from manufacturer.

FCC Statement

This device complies with part 15 of the FCC rules. Operation is subject to the following two conditions: (1) this device may not cause harmful interference, and (2) this device must accept any interference received, including interference that may cause undesired operation.

Changes or modifications not expressly approved by the party responsible for compliance could void the user's authority to operate the equipment.

NOTE: This equipment has been tested and found to comply with the limits for a Class B digital device, pursuant to part 15 of the FCC Rules. These limits are designed to provide reasonable protection against harmful interference in a residential installation. This equipment generates uses and can radiate radio frequency energy and, if not installed and used in accordance with the instructions, may cause harmful interference to radio communications. However, there is no guarantee that interference will not occur in a particular installation. If this equipment does cause harmful interference to radio or television reception, which can be determined by turning the equipment off and on, the user is encouraged to try to correct the interference by one or more of the following measures:

- 1) Reorient or relocate the receiving antenna.
- 2) Reorient or relocate the receiving antenna.
- 3) Reorient or relocate the receiving antenna.
- 4) Consult the dealer or an experienced radio/TV technician for help important announcement

The device has been evaluated to meet general RF exposure requirement. The device can be used in portable exposure condition without restriction.

Radiation Exposure Statement

This equipment complies with FCC radiation exposure limits set forth for an uncontrolled environment. This equipment should be installed and operated with minimum distance 20cm between the radiator and your body.

This transmitter must not be co-located or operating in conjunction with any other antenna or transmitter.