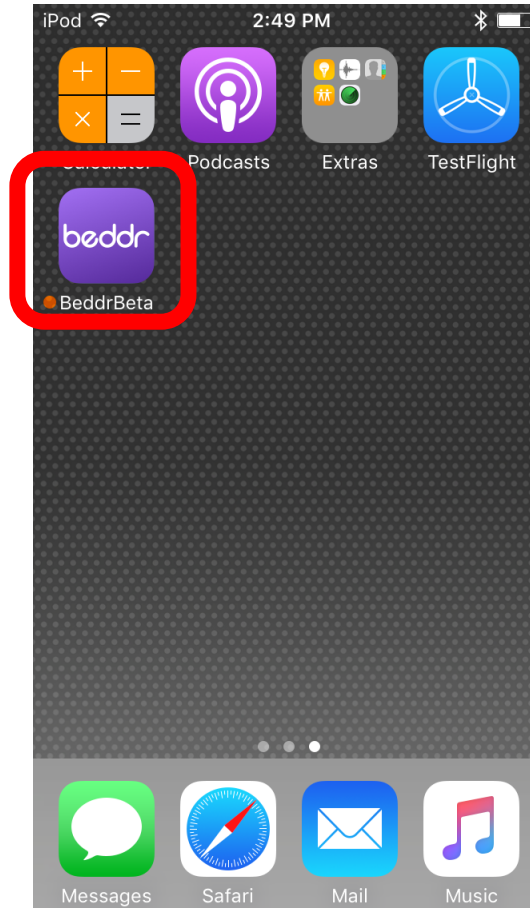


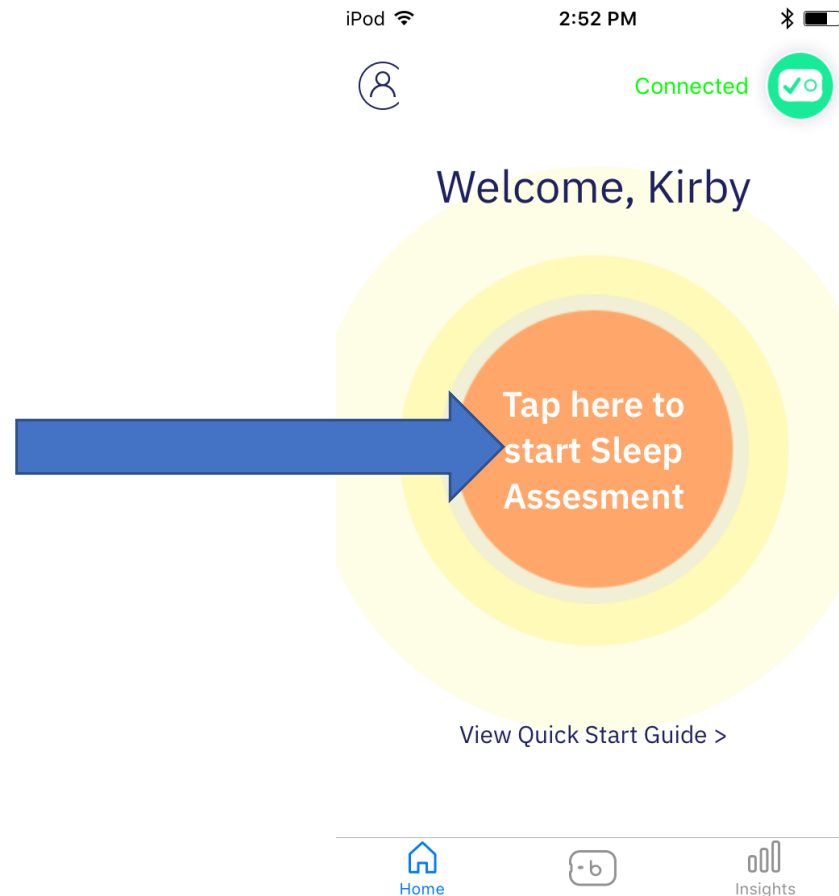
Directions for using BeddrBeta

7/13/18

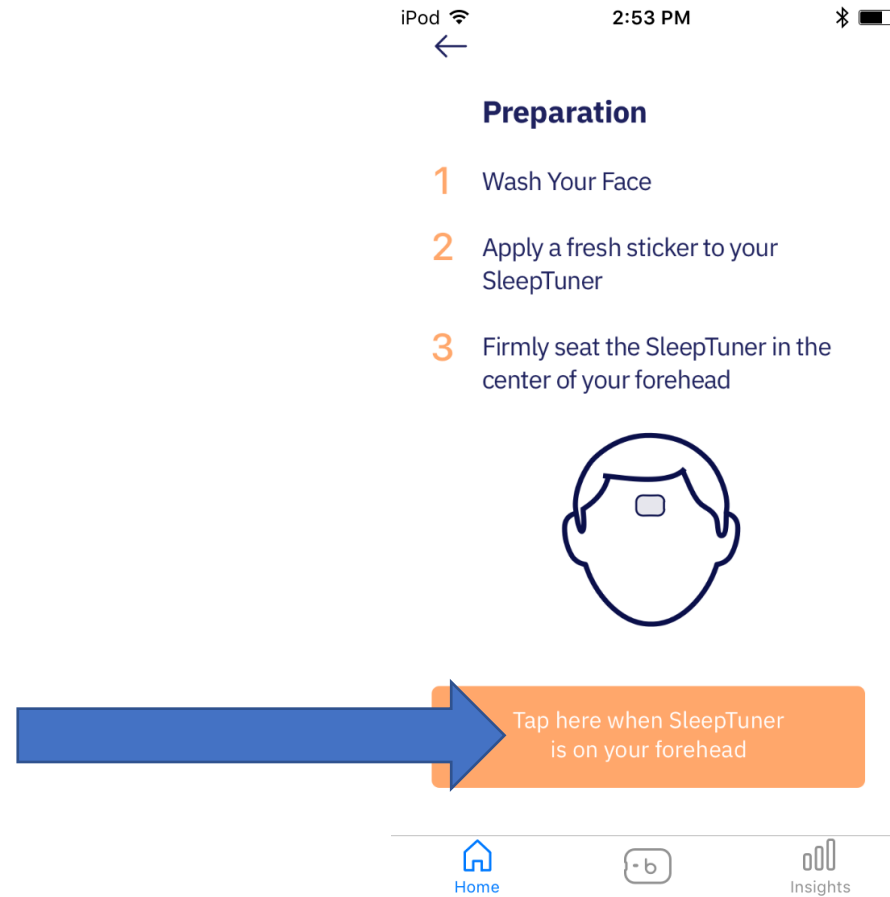
Open BeddrBeta App



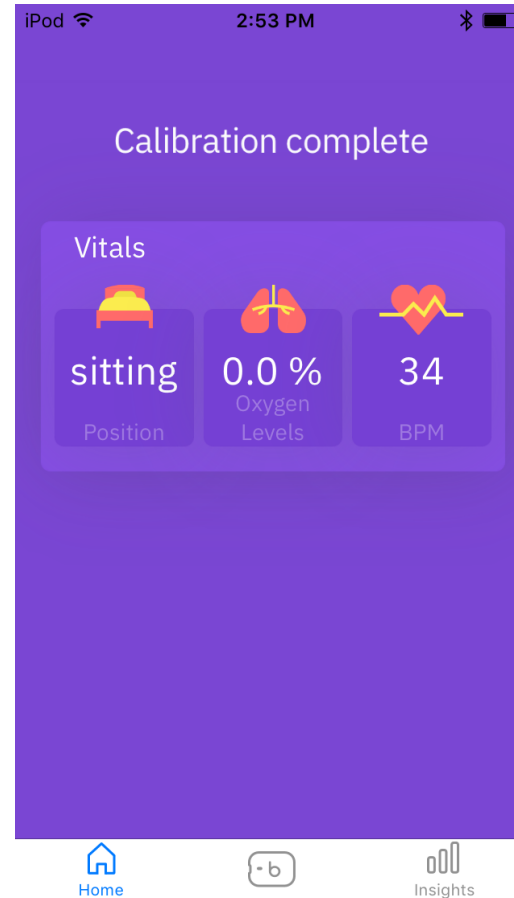
Click here to start Sleep Assessment, SleepTuner
Serial # 1804DVT085 needs to be turned on. Only
this device will work with the app.



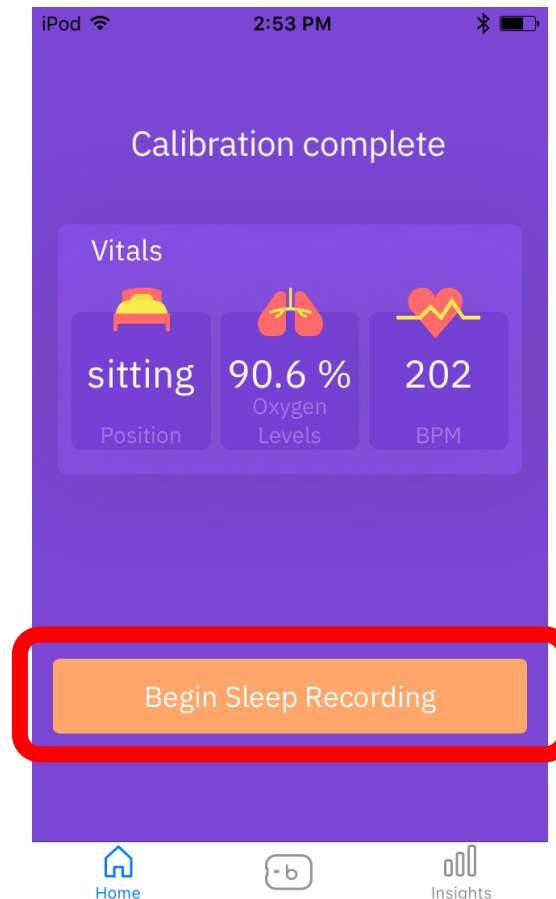
Tap on the “Tap here”



While on this screen, device is in “streaming mode”, use this for streaming mode.



Move device around, changing distance and angle from reflective/bright surfaces. If done correctly, “Begin Sleep Recording” button will appear. Click Begin Sleep Recording button in order to get to “logging mode”.



While on this screen, device is in “logging mode”.

