

TapNLink TnL-FIR103 (BLE, NFC) Datasheet

11 April 2018
Version 1.2

Contents

1	Introduction	5
2	Summary	6
3	Block schematic.....	7
4	Development environment.....	8
4.1	TapNLink module configuration	8
4.2	Smartphone software	8
4.3	Connectivity to a Cloud platform.....	8
5	Features.....	9
5.1	Communication channels	9
5.1.1	Near Field Communication (NFC)	9
5.1.2	Bluetooth Low Energy (BLE)	9
5.2	Target system interface	9
5.3	Security features.....	9
5.3.1	Access control configuration.....	10
5.4	Electrical characteristics	10
5.4.1	Power supply	10
5.4.2	Digital levels.....	10
5.5	RF specifications	10
5.6	Information appliance support	10
5.7	Cloud support	10
5.8	Operating temperature range	11
6	Pin assignment	12
6.1	J1 pinout	12
6.2	J3 pinout	13
6.3	P1 extension connector	13
7	Regulatory compliance	14
7.1	CE certification (Europe)	14
7.2	FCC (USA) and IC (Canada).....	14
7.2.1	FCC Part 15 compliance statement.....	14
7.2.2	Industry Canada Licence-Exempt Radio Apparatus	14
7.2.3	Radio Frequency (RF) Exposure Compliance of Radiocommunication Apparatus	15
7.2.4	End Product Labeling	15
7.2.5	End Product User's Manual:	15
8	Mechanical characteristics	16
8.1	Module dimensions.....	16
8.2	Standard plastic case	16
9	Ordering Information.....	17

9.1	Ordering Codes and Options.....	17
9.2	Evaluation version (Primer)	17
10	Appendices	18
10.1	EU Declaration of Conformity (DoC)	18
11	History.....	20

1 Introduction

IoTize™ offers a complete solution for migrating electronic systems to the Internet of Things (IoT). It is inspired by the advantages of adding network connectivity without redesigning existing systems or recoding their firmware.

The **TapNLink™** line uses technologies and techniques that are typically reserved for system programming and debugging to connect directly the target system's microcontroller. This unique approach makes it possible to add connectivity without redesigning the system. It also delivers design flexibility through simple encapsulation of complex wireless communication, network and security technologies. This facilitates the initial integration, but also makes it possible to easily evolve the wireless connection to meet future needs or technology evolutions... and still without ever recoding the system's original software.

TapNLink provides fully qualified wireless implementations. These allow connection to local information appliances (smartphones, PDAs, tablets, PCs, etc.) allowing users to monitor or update a system and transfer data to the Cloud if/when necessary. Depending on the connectivity channels on the module, TapNLink can also enable connection to WAN or LPWAN for remote supervision and remote access control from the Cloud. To support Cloud integration, TapNLink leverages IoTize's system-to-Cloud IoT solution based on MQTT. This solution easily integrates both private and public Cloud platforms.

The complete solution is implemented by configuration only. It thus minimizes the risks of IoT migration whether you are creating an early IoT proof-of-concept, retrofitting products for the IoT or designing new IoT-enabled products, IoTize provides the required connectivity, ease-of-implementation and flexibility.

For the embedded application, IoTize enables:

- Smartphone-based GUI
- Data transfer to the internet

IoTize provides software and hardware encapsulation of the smartphone / target application communication. It manages communication with:

- Target application via hardware module RF interface(s) and communication co-processor
- Smartphone via a low-level service application
- All IoTize connectivity modules:
- Uses NFC (Near Field Communication) to enable RF connectivity, some also use BLE, Wi-Fi and others.

2 Summary

The TapNLink NFC, Bluetooth Low Energy (BLE) module (Part N°: TnL-FIR103) offers plug'n play integration of contactless/radio interfaces to enable the connection of a microcontroller-based target system to a local information appliance (smartphones, PDAs, tablets, PCs, etc.).

TapNLink connects directly the microcontroller of the target system and allows non-intrusive read and/or write access to variables in the target microcontroller's memory. The data addresses and access parameters for the target system are configured in the TapNLink. No coding of the target system's native functionality is required to connect TapNLink to the target microcontroller.

TapNLink supports connection to local information appliances (Android or iOS), where data can be viewed and modified via a graphical user interface created by the target system designer. The solution includes MQTT infrastructure to enable data transmission via the local information appliance to any Cloud-based IoT platform. Data that is read by the TapNLink can be transmitted via the information appliance's data or network connection when available. For this, IoTize provides an MQTT-base relay with IoT Cloud platform translators. This MQTT infrastructure is open source software that target system designers can install on servers and adapt to any private or public IoT Cloud platform.

Communication Channels

- Near Field Communication (NFC) Type5 tag (ISO/IEC 15693)
- Bluetooth Low Energy (BLE) 4.1

Target system interface protocols

- SWD debugging/programming interface protocol
- Software Secure Serial Port (S3P)

Security features

- Configurable access profiles
- Configurable, encrypted passwords
- AES-128 module-level data encryption
- Configurable secure pairing with NFC

Configurable target memory access controls

- Accessible data addresses: up to ~ 500
- User profiles: up to ~ 100
- Access capabilities: Read or Write or Read/Write

Electrical characteristics

- Input voltage: 2.3V to 3.6V
- Low power consumption:
 - Standby: 80 μ A
 - NFC Tx/Rx: 7 mA
 - BLE Tx/Rx: 15 mA

Mechanical characteristics

- Dimensions: 28 x 38 x 3 mm

Package options

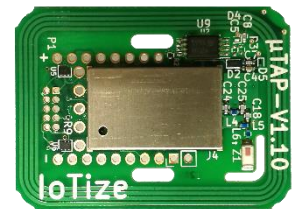
- Bare board
- Plastic casing (IP44)
- Silicone resin (IP65)

Operating temperature range

- -20°C, +55°C

Acceptance

- CE (Europe), FCC (USA), IC (Canada).
- REACH and RoHS compliant

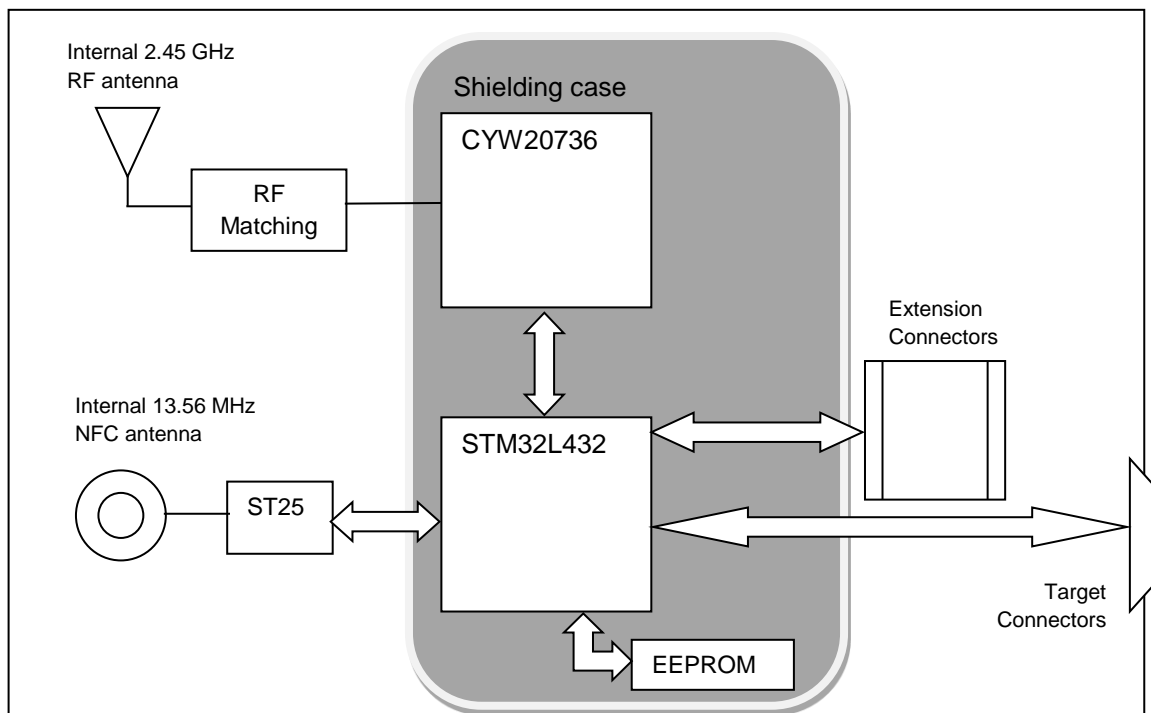


3 Block schematic

The BLE TapNLink module is equipped with two main integrated circuits:

- The STM32L432 microcontroller that execute the main program, managing the upper level protocols, the configuration and the access control.
- The CYW20736 SoC embeds the Cypress BLE stack and acts as a simple transmitter.

The matching circuitry for both the NFC and the BLE antennas are out of the shielding case. The NFC antenna is a trace at the periphery of the printed circuit and the BLE. The 2.45 GHz antenna is a ceramic device located close to the L slot in the printed circuit.



4 Development environment

4.1 TapNLink module configuration

TapNLink are implemented by configuration only using the free IoTize Studio software environment available on the IoTize website.

IoTize Studio provides a simple yet complete interface for managing the configuration of IoTize radio modules so that they interface correctly with the target system. IoTize Studio provides:

- Drag-and-drop configuration of target data addresses using the sources (ELF files) of the target system
- Instant configuration transfer without extensive hardware installations
- Immediate configuration verification on the designers PC and smartphone

When creating the TapNLink configuration, the designer imports the target system's firmware source (ELF file). Designating the address to access via TapNLink is as easy as dragging-and-dropping them into the configuration project. All variable information (address, type, etc.) is copied directly from the firmware source file, greatly reducing the risk of configuration errors. IoTize Studio also notifies the designer if the firmware source file is modified after the configuration has been created.

IoTize Studio allows users to transfer their configuration for testing and deployment with just the click of a button. No complicated or expensive hardware is required.

After configuration, the designer can connect to the module and visualize in IoTize Studio the results of the configuration. The integrated app viewer in IoTize Studio shows the resulting user app exactly as it would display on a smartphone or other portable information appliances. When the designer is satisfied with the configuration, visualizing the result on a portable information appliance requires only that the designer connect it to the TapNLink via one of the supported radio interfaces.

IoTize Studio and TapNLink are designed to allow the transfer of the Designer's configuration using a smartphone connection either directly with the designer's PC or via our Cloud-based MQTT relay. Thanks to this implementation no additional hardware is required during the design phase.

4.2 Smartphone software

Various application notes are available at the IoTize Website to describe how to design HTML pages to monitor the TapNlink Primer from a smartphone. APIs for native programs are also available.

4.3 Connectivity to a Cloud platform

For visualization of Cloud data, IoTize provides TapNLink Primer. The Primer includes a preconfigured, provisioned IoT Cloud space where data from the target system can be easily viewed.

5 Features

The TapNLink NFC, Bluetooth Low Energy (BLE) module (root part number: TnL-FIR103) offers plug'n play integration of contactless/wireless radio interfaces to enable the connection of a microcontroller-base target system to a local information appliance (smartphones, PDAs, tablets, PCs, etc.).

TapNLink connects directly to two GPIO on the microcontroller in the target system. These GPIOs can be either the target Microcontroller's debugging/programming port (ex. SWD) or any pair of GPIOs enabled by the IoTize S3P protocol (application relinking is required). The connection to the target microcontroller is non-intrusive and allows read and/or write access of variables in the target microcontroller's memory. The data addresses and access parameters for the target system are configured in the TapNLink using the IoTize Studio configuration environment. No coding of the target system's native functionality is required to connect TapNLink.

TapNLink communicates with local information appliances via their NFC and/or BLE interfaces. The IoTize Communication Service app (Android or iOS) on the information appliance manages its communication interfaces, thus eliminating the need for the target-system designers to code or validate these mechanisms. Target system designers instead focus on creating the user interface for the target system.

With TapNLink NFC, BLE modules, a local information appliance can serve as a network gateway to bring data to or retrieve data from the Cloud. Data that is read by the TapNLink can be transmitted via the information appliance's data or network connection when available. For this, IoTize provides an MQTT-base relay with IoT Cloud platform translators. This MQTT infrastructure is open source software that designers of target systems can install on servers and adapt to any private or public IoT Cloud platform.

5.1 Communication channels

5.1.1 Near Field Communication (NFC)

- Data transmission rate¹: 2 kilobytes per second
- Range²: to 4 centimeters
- Supports use of NFC for dynamic wakeup and pairing of the BLE interface.

5.1.2 Bluetooth Low Energy (BLE)

- Max power: 4 dBm (approx. 2.5 mW)
- Data transmission rate¹: 0.5 kilobytes per second
- Range²: to 30 meters

Notes:

1. Average speed while acquiring 1000 times 220 bytes from the target.
2. Measure line-of-site in an environment free of obstructions and rebound effects.

5.2 Target system interface

Requires 2 GPIO enabled by the target microcontroller's debug protocol or IoTize Simulated Secure Serial Port (S3P).

5.3 Security features

Customized firmware allows differentiated algorithms for each application. The communication chain is fully secured using classic techniques such as:

- Authentication: secured passwords or signed tokens
- Encryption: AES-128

When implementing on GPIO enabled by the target microcontroller's debug protocol, data encryption is enabled to the level of the TapNLink module.

When implementing with S3P protocol, security features can be implemented on the target microcontroller. Features include data encryption and filtering of accessible addresses in the target's memory space.

5.3.1 Access control configuration

IoTize stores access control data in 2KB of E²PROM:

- Accessible data addresses: up to ~ 500
- User profiles: up to ~ 100
- Access rights: Read/Write
- Plus 3 predefined profiles of up to 96 characters.

5.4 Electrical characteristics

5.4.1 Power supply

- Maximum DC supply voltage 3.9V
- DC supply voltage 2.3V to 3.6V
- Low power consumption:
 - Standby: 80 μ A
 - NFC Tx/Rx: 7 mA
 - BLE Tx/Rx: 15 mA

When in standby mode, wake up of the Tap is possible by NFC.

5.4.2 Digital levels

- Maximum voltage on input/output $V_{cc} + 0.3V$
- Minimum voltage on input/output $V_{ss} - 0.3V$
- Input low voltage (max) 0.4V
- Input high voltage (min) $0.75 \times V_{cc}$

5.5 RF specifications

For details, see CYW20736 SoC specifications.

Parameter	Min	Typ	Max	Unit
Frequency range	2402	-	2480	MHz
Rx sensitivity		-93		dBm
Output power range	-20	3.0	3.0	dBm

5.6 Information appliance support

TapNLink includes radio implementations for NFC and BLE, which are compatible with a wide range of information appliances running Android or iOS operating systems.

The IoTize Communication Service (ICS) app manages the radio interfaces on information appliances running Android v4.0.3 and iOS v10 or later versions.

5.7 Cloud support

TapNLink includes an open source MQTT relay. Designers using TapNLink are free to copy and adapt this to meet their specific requirements for data exchanges with IoT Cloud platforms. Full information about IoTize Cloud support for TapNLink is provided in the IoTize MQTT Relay User Manual.

5.8 Operating temperature range

The behavior and the radio characteristics have been tested to guarantee a correct operation in the range:

$[-20^{\circ}\text{C}, +55^{\circ}\text{C}]$.

Important note:

When the temperature is below -10°C , the startup time (t_s) of the BLE advertising increases. The following delay have been measured:

- For $T > -10^{\circ}\text{C}$, $t_s < 3 \text{ s}$
- For $T = -15^{\circ}\text{C}$, $t_s = 20 \text{ s}$
- For $T = -20^{\circ}\text{C}$, $t_s = 33 \text{ s}$
- *For $T = -25^{\circ}\text{C}$, $t_s = \pm 60 \text{ s}$*
- *For $T = -35^{\circ}\text{C}$, $t_s = \pm 200 \text{ s}$*

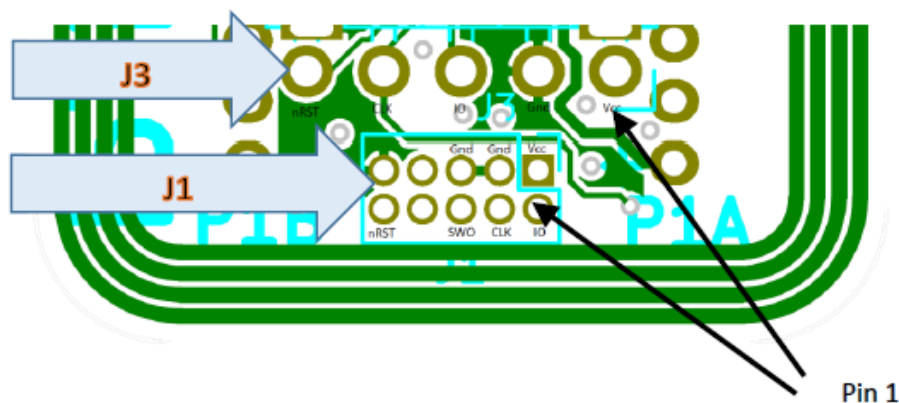
This delay does not concern the NFC communication but only BLE. Note that the same delay has to be considered for waking-up when the low power mode has been configured.

6 Pin assignment

The module TapNLink BLE-NFC has 3 connectors:

- J1 (2x5 in 1.27mm steps) that connects the TAP to the debug connector (ARM-SWD standard) of the target card via a flex cable (in 0.635mm steps).
- J3 (1x5 in 2.54mm steps) which connects the TAP to the target board more flexibly by free wires not necessarily grouped in tablecloth. Note that J3 is a subset of J1.
- P1 extension connector, composed of two rows P1A and P1B of contacts in 2mm steps. This connector is mainly reserved for the addition of expansion cards and will only be briefly described in this document.

The following figure shows (bottom view) the signals connected to J1 and J3:



6.1 J1 pinout

This connection corresponds to the format specified by ARM for Cortex-M microcontrollers

Vcc	1	•	•	2	S3PIO/SWDIO (TMS)
Gnd	3	•	•	4	S3PCLK/SWDCLK (TCK)
Gnd	5	•	•	6	SWO (TDO)
Not connected	7	•	•	8	-- (TDI)
Gnd	9	•	•	10	nRST

Note:

The names in parentheses correspond to the JTAG protocol. In general, it is advisable to prefer SWD to JTAG on Cortex-M microcontrollers. For any other microcontroller, use the S3P protocol.

The signals to be connected in SWD or S3P are:

- Gnd
- Vcc (the target must provide the TAP power),
- S3PIO/SWDIO, a bi-directional data signal.
- S3PCLK/SWDCLK, the clock signal, bi-directional in S3P.
- NRST: Reset signal of the target processor. Its connection is optional. It should be maintained if you want to use the reset command, or if you want to use the TAP as a programmer (the reset signal is required in some programming situations).

6.2 J3 pinout

J3 was added for practical reasons. The 2.54 mm step connectors are cheaper and more robust and can connect to a wide range of connectors. It is easier to use this connector to connect to the 20-point ARM 2.54mm-step standard.

J3 does not correspond to a standard. It contains the main signals necessary for S3P and SWD protocols:

Vcc	1	●
Gnd	2	●
S3PIO/SWDIO	3	●
S3PCK/SWDCK	4	●
nRST	5	●

6.3 P1 extension connector

P1 extension connector is composed of two mechanically independent parts:

- P1A has 8 points
- P1B has 8 + 2 = 10 points. The two additional points are used exclusively for initial programming.

Most of the signals on the expansion connector are reserved for extensions proposed by IoTize, so this connector will only be used in exceptional situations, for example, if it is necessary to control the reset of the TAP.

The figure below shows the position of the TAP's power, reset and wakeup points.

		●	P1B.10
		●	P1B.9
P1A.8	●	●	P1B.8
P1A.7	●	●	P1B.7
P1A.6	●	●	P1B.6
Tap_nRST / P1A.5	●	●	P1B.5
P1A.4	●	●	P1B.4
P1A.3	●	●	P1B.3 / Tap_Wakeup
P1A.2	●	●	P1B.2
Vcc / P1A.1	●	●	P1B.1 / Gnd

7 Regulatory compliance

Changes or modifications not expressly approved by IOTIZE S.A.S. could void the user's authority to operate the equipment.

TapNLink TnL-FIR103 is tested and qualified under the following standards:

7.1 CE certification (Europe)

The TapNLink TnL-FIR103 operating range corresponds to:

- Frequency Band: 2400-2483.5MHz
- Maximum Transmitting Power: 10mW (EIRP)

This device has been tested and certified for use in the European Union and IOTIZE hereby declares that the device "TapNLink TnL-FIR103" is in conformity with the essential requirements of Directive 2014/53/EU. The complete Declaration of Conformity can be found at:

- Appendix 1 of the present notice,
- www.iotize.com for the electronic version.

If this device is used in a product, the OEM has responsibility to verify compliance of the final product to the EU standards. A Declaration of Conformity must be issued and kept on file. The 'CE' mark must be placed on the OEM product per the labeling requirements of the Directive.

7.2 FCC (USA) and IC (Canada)

7.2.1 FCC Part 15 compliance statement

This device complies with part 15 of the FCC Rules. Operation is subject to the following two conditions: (1) This device may not cause harmful interference, and (2) this device must accept any interference received, including interference that may cause undesired operation.

NOTE: This equipment has been tested and found to comply with the limits for a Class B digital device, pursuant to part 15 of the FCC Rules. These limits are designed to provide reasonable protection against harmful interference in a residential installation. This equipment generates uses and can radiate radio frequency energy and, if not installed and used in accordance with the instruction, may cause harmful interference to radio communications. However, there is no guarantee that interference will not occur in a particular installation. If this equipment does cause harmful interference to radio or television reception which can be determined by turning the equipment off and on, the user is encouraged to try to correct interference by one or more of the following measures:

- Reorient or relocate the receiving antenna.
- Increase the separation between the equipment and receiver.
- Connect the equipment into an outlet on circuit different from that to which the receiver is connected.
- Consult the dealer or an experienced radio/TV technician for help.

7.2.2 Industry Canada Licence-Exempt Radio Apparatus

This device complies with Industry Canada licence-exempt RSS standard(s). Operation is subject to the following two conditions: (1) this device may not cause interference, and (2) this device must accept any interference, including interference that may cause undesired operation of the device.

Le présent appareil est conforme aux CNR d'Industrie Canada applicables aux appareils radio exempts de licence. L'exploitation est autorisée aux deux conditions suivantes : (1) l'appareil ne doit pas produire de brouillage, et (2) l'utilisateur de l'appareil doit accepter tout brouillage radioélectrique subi, même si le brouillage est susceptible d'en compromettre le fonctionnement.

7.2.3 Radio Frequency (RF) Exposure Compliance of Radiocommunication Apparatus

This device complies with FCC and Industry Canada RF radiation exposure limits set forth for general population (uncontrolled exposure). This device must not be collocated or operating in conjunction with any other antenna or transmitter.

Cet appareil est conforme aux limites FCC et Industry Canada concernant l'exposition aux rayonnements RF établies pour le grand public. (Environnement non-contrôlé) Cet émetteur ne doit pas être co-situé ou fonctionner conjointement avec une autre antenne ou un autre émetteur.

7.2.4 End Product Labeling

7.2.4.1 FCC Certification

The final end product must be labeled in visible area with the following:

“Contains Transmitter Module FCC ID: 2APCX-TNLFIR10”
or “Contains FCC ID: 2APCX-TNLFIR10”

7.2.4.2 IC Certification

The final end product must be labeled in visible area with the following:

L'équipement final doit être étiqueté sur un endroit visible avec le texte suivant :
“Contains IC: 23741-TNLFIR10”

7.2.5 End Product User's Manual:

The user manual for end users must include the following information in a prominent location:

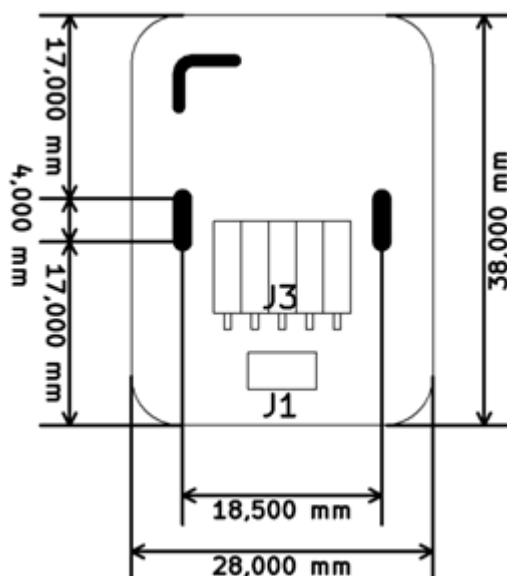
“IMPORTANT NOTE:

To comply with FCC RF exposure compliance requirements, the antenna used for this transmitter must not be collocated or operating in conjunction with any other antenna or transmitter.”

8 Mechanical characteristics

8.1 Module dimensions

The main dimensions are noted in the diagram below (bottom view):

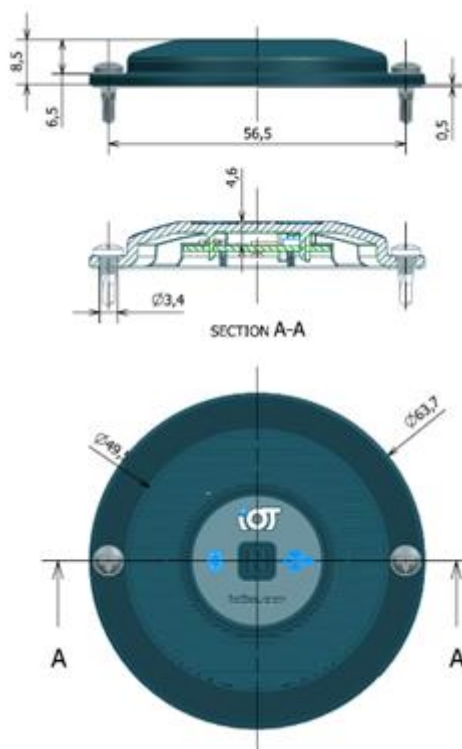


Dimensions³: 28 x 38 x 3 mm

Weight: 3 g

8.2 Standard plastic case

An optional plastic casing is available from IoTize (see dimensions below):



9 Ordering Information

All prices include at a minimum the TapNLink modules pre-qualified, pre-programmed and ready to configure. Pricing also includes software for smartphone user interface implementation (IoTize Communication Service – ICS) and the IoTize Cloud MQTT infrastructure (open source). For product configuration, pricing includes IoTize Studio configuration and testing environment for Windows PCs, and infrastructure for device configuration via a smartphone connection (Wi-Fi, BLE) or via the IoTize MQTT broker/relay.

The **TapNLink TnL-FIR103** is available for purchase in an off-the-shelf configuration without optional connectors or connection cables. Off-the-shelf packages are available in MOQ of 10 units via the www.iotize.com online store or by emailing contact@iotize.com.

For quantities of more than 500 units, please email contact@iotize.com for price quotes and lead times.

9.1 Ordering Codes and Options

Base part number: TnL-FIR103

Product Line	Use Mode	Physical Interface	Radio Interface ¹	Product Prefix	Security	Casing Type	Power Supply
TnL	F	I	R	10	3	-0	-TO

Product Lines: TnL = TapNLink²

Use Mode: **F** = **Fixed** (powered by target system)

Physical interface: **I** = **SWD/S3P**

Radio interface: T = NFC only, **R = BLE**, W = Wi-Fi, B = Bluetooth Classic, L = BLE, LoRa

Security: 1 = Primer, 2 = Low, **3 = software based security**, 5 = hardware based security with embedded secure element.

Casing Type³: **-0 = No casing option selected**

Power Supply: **-TO = Powered by target system only**

Notes:

1. All modules include NFC by default for advanced functionalities such as secure wake up and pairing.
2. The features of the Part number shown in the table are indicated in bold.
3. The ABS plastic casing is available as an option with its specific type number.

9.2 Evaluation version (Primer)


An evaluation kit for the TnL-FIR103, referenced as IOTZ-TAPNLINK-PRIMER-NB. It contains:

- A TnL-FIR101 tap (identical to TnL-FIR103 but lower security level),
- A simple target board based on a STM32F103 microcontroller,
- A plastic casing,
- A 5 wire cable to connect the tap to the target board.

10 Appendices

10.1 EU Declaration of Conformity (DoC)

EU Declaration of Conformity (DoC)



We, the undersigned:

Designated product:

Certify and declare:

Important hints:

IoTize S.A.S.
17, avenue Jean Kuntzmann
38330 Montbonnot St Martin
France
Email: contact@iotize.com
Phone : +33 4 76 41 87 99

TapNLink Bluetooth Low Energy module

Part number: TnLFIR103
Frequency band 1: 2400-2483.5MHz
Max Power: 10mW (e.i.r.p)

under our sole responsibility that the designated product is in conformity with the essential requirements and provisions of the following European Directives:


☒ Directive 2014/53/EU of the European Parliament and of the Council of 16 April 2014 on the harmonisation of the laws of the Member States relating to the making available on the market of **radio equipment (RED)**.
The conformity of the designated product(s) with the provisions of this European Directive is given by the compliance with the following European Standard(s):

Essential requirements of article 3.1a) of RED: (Safety, electrical)	- EN 60950-1 (2006+A11/2009+A1/2010+A12/2011+A2/2013)
Essential requirements of article 3.1a) of RED: (Safety, health)	- EN 62479 (2010)
Essential requirements of article 3.1b) of RED: (Electromagnetic Compatibility)	- ETSI 301 489-1 (V2.1.1 + Draft V2.2.0) - ETSI 301 489-17 (V3.1.1 + Draft V3.2.0)
Essential requirements of article 3.2) of RED: (Efficient use of radio spectrum)	- ETSI EN 300 328 (V2.1.1)

☒ Directive 2011/65/EU of the European Parliament and of the Council of 8 June 2011 on the restriction of the use of certain hazardous substances (**ROHS**) in electrical and electronic equipment.

☒ Directive 2012/19/EU of the European Parliament and of the Council of 4 July 2012 on waste electrical and electronic equipment (**WEEE**).

RED approval is only valid for products in delivery state, including standard hardware and software.
TapNLink Bluetooth Low Energy modules are components which are delivered to OEM manufacturers for their use (integration) in final or combined products.
It is the responsibility of the OEM manufacturer to demonstrate compliance with all applicable EU directives and standards. The IoTize declaration of conformity serves as input to the declaration of conformity for the final product.



TapNLink DoC, page 1 of 2

EU Declaration of Conformity (DoC)



At the time of writing following documents guidance have been published:

Blue Guide:

<http://ec.europa.eu/DocsRoom/documents/18027/>

RED Guide:

<http://ec.europa.eu/docsroom/documents/23321>

Specifically, within the new RED framework, all OEM manufacturers have for instance to fulfill the following additional requirements:

- Provide product branding clearly identifying company name or brand and product name as well as type, charge or serial number for market surveillance
- Include documentation containing full postal address of the manufacturer as well as radio frequency band and maximum transmitting power
- Include a user manual, safety information and a declaration of conformity for the final product in local language
- Provide product development and test documentation upon request

The technical construction file is kept available at:

IoTize S.A.S.

17, avenue Jean Kuntzmann

38330 Montbonnot St Martin

FRANCE

Phone : +33 4 76 41 87 99

Issued on April 10th 2018,

Name and position of person binding the manufacturer or his authorised representative:

Name: Francis Lamotte
Position: President
Email: francis.lamotte@iotize.com

Signature:




TapNLink DoC, page 2 of 2

11 History

Date	Version	Author	Modification
Dec 20 th 2017	1.0	SG	First release version.
Feb 15 th 2018	1.1	FL	Update dimensions and current consumption.
April 10 th 2018	1.2	SG	Acceptance information (CE/FCC/IC).

Disclaimer

Information in this document is subject to change without notice and does not represent a commitment on the part of the author(s).

No part of this document may be reproduced or transmitted in any form or by any means, electronic or mechanical, including photocopying, recording, or information storage and retrieval systems, for any purpose other than the development of the IoTize™ technology, without prior written permission from IoTize SAS and the IoTize™ consortium members.

Every effort has been made to ensure the accuracy of this manual and to give appropriate credit to persons, companies and trademarks referenced herein.

This document exists in electronic form (pdf) only.

Copyright © IoTize All rights reserved

IoTize™ is a registered trademark of IoTize SAS. All other registered names and trademarks are the property of their respective owners.