

# Smart Plug User Manual

Electrical Rating: 100-250V AC,50Hz  
Working Temp: -20-50℃  
Wireless Type: WiFi 2.4GHz  
App Support: iOS/Android

## ► Warm Tips

- Support 2.4 GHz Wi-Fi
- Simplified steps to install App on your smart phone or tablet on Apple/Google Play Store
- Works with Amazon Alexa, Google Home
- For indoor use only

- 01 -

## ► How to connect Smart Plug to Wi-Fi network

1. Download Smart Life from [App Store](#) or [Google Play](#)
2. Download or scan the QR code and install the Smart Life App for either iOS and Android. Once downloaded, the app will ask you to register your device. Enter your email, you will receive a text with a registration code, you will then create a password.



Attention: There's no Registration Code needed if email method chosen.

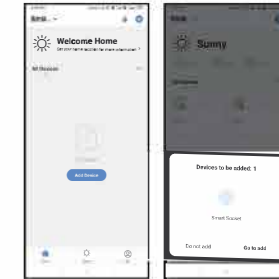
- 02 -

## ► Connect with mobile phone (Auto Scan)

1. Turn on the smart phone or device Bluetooth function and ensure the smart phone or device network is ON.
2. Before connecting, please make sure your smart phone or device is connecting with your home Wi-Fi 2.4GHz successfully.
3. Make sure quick mode configuration is initiated: the indicator light blinks blue rapidly (twice per second). If it blinks blue slowly (once every 3 seconds), press and hold the power button on the Smart Plug for 6 seconds until the indicator light blinks rapidly.
4. Open the application, click "+" to select 'Auto Scan Mode', and then start to automatically scan products that can be connected.
5. Once connected, the App will prompt the connection, then click "Done".

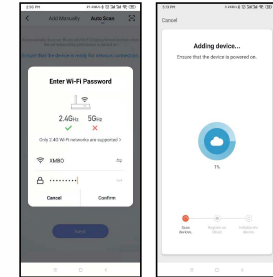
- 03 -

- ① Into the home page    ② Auto Scan



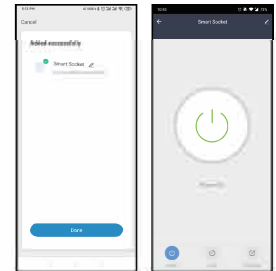
- 04 -

- ③ Enter the Wifi password    ④ The equipment connected to the internet



- 05 -

- ⑤ Distribution network    ⑥ Jump to the user panel



- 06 -

## ► Connect with mobile phone [Add Manually]

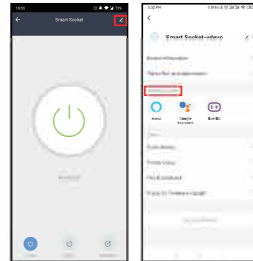
1. Turn on the smart phone or device Bluetooth function and ensure the smart phone or device network is ON.
2. Before connecting, please make sure your smart phone or device is connecting with your home Wi-Fi 2.4GHz successfully.
3. Make sure quick mode configuration is initiated: the indicator light blinks blue rapidly (twice per second). If it blinks blue slowly (once every 3 seconds), press and hold the power button on the Smart Plug for 6 seconds until the indicator light blinks rapidly.
4. Open the app, to scan QR code and see the guideline of pairing mode.



- 07 -

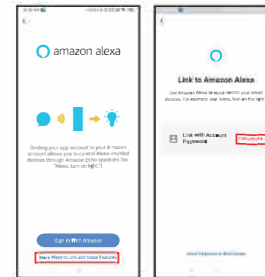
## ► Support 3rd Party Control

- ① Type the edit menu of the user panel.
- ② Select the third-party application to be operated.



- 08 -

- ③ Follow the instructions in the tutorial to connect and use.



- 09 -

## FCC Warning

This device complies with Part 15 of the FCC Rules. Operation is subject to the following two conditions:  
(1) This device may not cause harmful interference, and (2) this device must accept any interference received, including interference that may cause undesired operation.

NOTE: 1. This equipment has been tested and found to comply with the limits for a Class B digital device, pursuant to part 15 of the FCC Rules. These limits are designed to provide reasonable protection against harmful interference in a residential environment. This equipment generates, uses and can radiate radio frequency energy and, if not installed and used in accordance with the instructions, may cause harmful interference to radio communications. However, there is no guarantee that interference will not occur in a particular installation. If this equipment does cause harmful interference to radio or television reception, which can be determined by turning the equipment off and on, the user is encouraged to correct the interference by one or more of the following measures:  
• Reorient or relocate the receiving antenna.  
• Increase the separation between the equipment and receiver.  
• Connect the equipment into an outlet on a circuit different from that to which the receiver is connected.  
• Consult the dealer or an experienced radio/TV technician for help.

NOTE 2: Any change or modification to this user manual is subject to the approval of the manufacturer. The manufacturer shall not be responsible for any damage caused by the use of this equipment in violation of the instructions.  
RF Emissions Statement  
To maintain compliance with FCC's RF Emissions guidelines, this equipment should be installed and operated with minimum 20cm between the radiator and your body.  
This device and its antenna(s) must not be co-located or operated in conjunction with any other antenna or transmitter.

- Please check whether the device is connected with power and your phone is connected with Wi-Fi.
- Check routers: If the router is dual-band router, please select a 2.4GHz network to add a device. You do not need to open the router broadcasting function.
- Set up the wireless router: Set encryption method as WPA2-PSK authentication type as AES, or set both as auto. The Wireless mode cannot be only 5GHz. Please name router "Wi-Fi" in English. In order to stay strong Wi-Fi signal, please keep device and router within a certain distance.

- 10 -

- Check whether connected devices have reached the Maximum number router connection. If so, please try to turn off the Wi-Fi connection of some devices.
- Make sure router wireless MAC filtering function is enabled.
- Remove the device from the filter list and make sure that router is not prohibiting device from connection.
- Make sure the entered password is correct when adding a new device.

## Warranty

The product carries a one-year warranty from purchase date. Please feel free to contact us when you have any product problem or suggestions. We take care of all quality-related issues with a REPLACEMENT OR FULL REFUND.



Made in China / In China hergestellt

- 11 -