

55" wall-mounted Android Network Poster Screen with touch

ZSG5575-HIF

FCC ID:2AP9N-ZSG5575

USER INSTALLATION MANUAL

Requirements of pollution control markings on China electronic information Products

In order to control and reduce the environmental pollution caused by the wastes of electronic information products, promote the production and sales of low-pollution electronic information products, and protect the environment and human health, only toxic and hazardous substances contained by the products are given below according to the Regulations of the Chinese Government for Electronic Information Products Pollution Control:

Part name	Toxic and hazardous substances or elements					
	Lead(Pb)	Hg	Cd	Chromium VI(Cr (VI)	PBB	PBED
Back cover(SECC/SPT/SPCC)	○	○	○	○	○	○
Front frame(aluminum or aluminum-magnesium alloys)	○	○	○	○	○	○
Lens	○	○	○	○	○	○
Plastic assemblies	○	○	○	○	○	○
Metal parts(SECC/SPTE/SPCC)	○	○	○	○	○	○
Springs(SUS/SUP)	○	○	○	○	○	○
Spring sheet(fast cut phosphor bronze)	○	○	○	○	○	○
Rubber assemblies	○	○	○	○	○	○
Fan assemblies	×	○	○	○	○	○
Base board assembly	×	○	○	○	○	○
Cable and wire	○	○	○	○	○	○
Power cord	○	○	○	○	○	○
Power socket assemblies	○	○	○	○	○	○
Metal and plastic bracket frameworks	×	○	○	○	○	○
Label/Name Plate	○	○	○	○	○	○
CD/Manual	○	○	○	○	○	○
Mylar	○	○	○	○	○	○

○ : It means that the content of this hazardous substance in all homogeneous materials of the part is lower than the limit value stipulated in SJ/T11363-2006

× : It means that the content of this hazardous substance in at least one homogeneous materials of the component is reater than the limit value stipulated in SJ/T11363-2006 Electronic Information Product.

FCC Warning

Changes or modifications not expressly approved by the party responsible for compliance could void the user's authority to operate the equipment.

This device complies with Part 15 of the FCC Rules. Operation is subject to the following two conditions: (1) this device may not cause harmful interference, and (2) this device must accept any interference received, including interference that may cause undesired operation.

This equipment has been tested and found to comply with the limits for a Class B digital device, pursuant to Part 15 of the FCC Rules. These limits are designed to provide reasonable protection against harmful interference in a residential installation. This equipment generates, uses and can radiate radio frequency energy and, if not installed and used in accordance with the instructions, may cause harmful interference to radio communications. However, there is no guarantee that interference will not occur in a particular installation.

If this equipment does cause harmful interference to radio or television reception, which can be determined by turning the equipment off and on, the user is encouraged to try to correct the interference by one or more of the following measures:

- Reorient or relocate the receiving antenna.
- Increase the separation between the equipment and receiver.
- Connect the equipment into an outlet on a circuit different from that to which the receiver is connected.
- Consult the dealer or an experienced radio/TV technician for help.

This equipment complies with FCC radiation exposure limits set forth for an uncontrolled environment. This equipment should be installed and operated with a minimum distance of 20cm between the radiator & your body. This transmitter must not be co-located or operating in conjunction with any other antenna or transmitter.

You are cautioned that changes or modifications not expressly approved by the party responsible for compliance could void your authority to operate the equipment. This device complies with part 15 of the FCC Rules. Operation is subject to the following two conditions:

- (1) This device may not cause harmful interference, and
- (2) this device must accept any interference received, including interference that may cause undesired operation.

Description of environmental service duration



Duration of service of the electronic information products under normal use conditions described in the manual shall be 10 years, which includes no leakage of toxic and harmful substances that would cause environmental pollution or harm to human body and property.



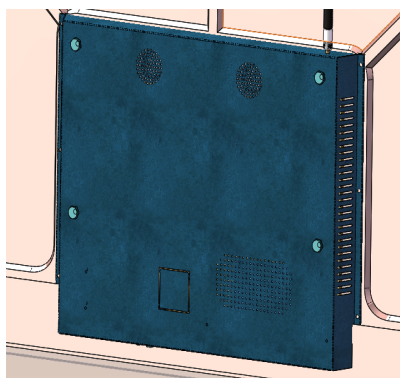
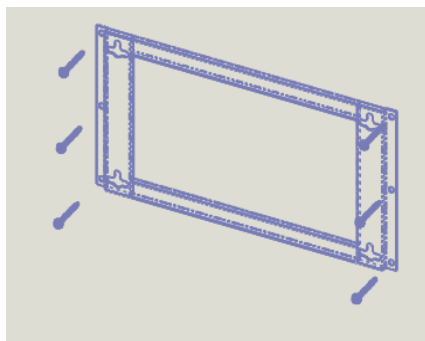
This product is only applicable within an area of 2000M

Statement

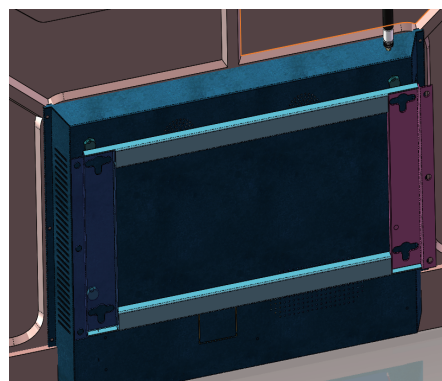
This is a Class B product. In a domestic environment, it may cause radio interference; in this case the user may be required to take practical measures against interference.

InstallationSteps

I. Install mounting bracket



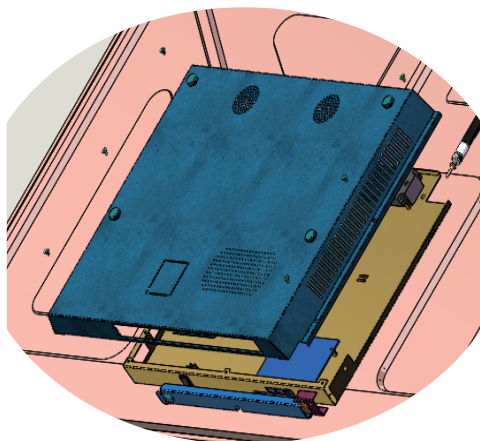
2. Screw the M8*25mm bolt into the back cover of the machine for a total of 4PCS.



3. Align the M8*25mm bolt cap on the back cover of the machine with the corresponding hole on the wall mount as shown above; until the machine is fully inserted into the hanging slot.

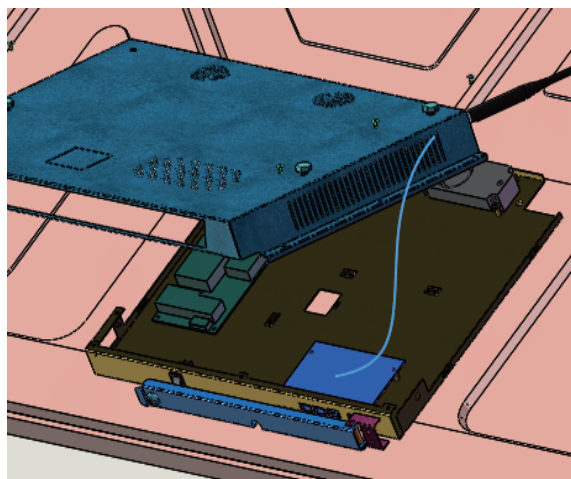
- 1.1. Use a percussion drill to pre-apply a hole with a diameter of 6 mm on the wall according to the hole size.
- 1.2. Insert a 6mm diameter hex plastic expansion tube into the previously drilled hole.
- 1.3. Use a Phillips screwdriver to screw in the M6*60mm self-tapping screws.

II.After disassembling shell



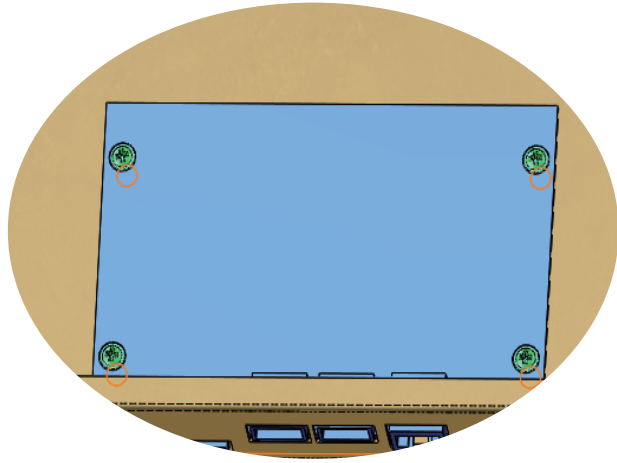
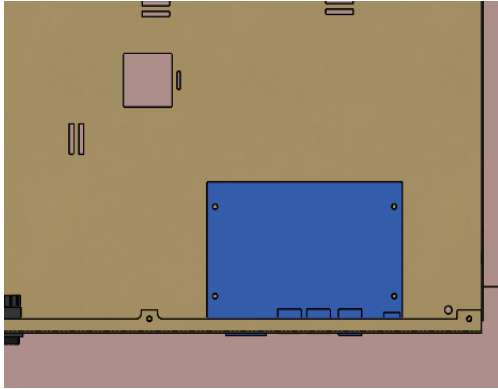
1. Remove the six screws on both sides of the back cover, gently lift the back cover from the machine, and remove the WIFI cable from the motherboard.

Note: The WIFI signal cable is connected to the rear case. Please pay attention when removing the back cover!

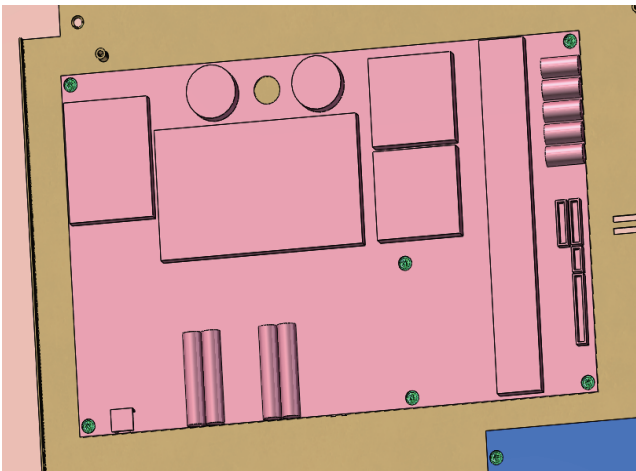


III. Install the motherboard (up to 170*170mm, THIN MINI ITX Motherboard)

1. Install the motherboard as shown

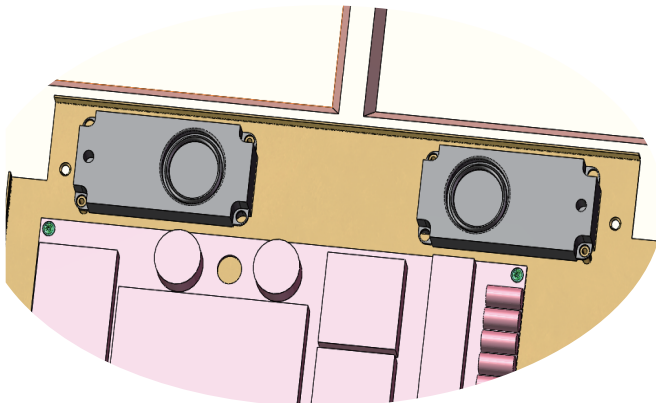


2. Lock 4 PCS PWM3*6 screws on the Android board.



IV. Install the power supply

1. Install the power supply as shown on the left. Look at the six screws on the power board.
2. Lock 6 PCS PWM3*6 screws on the power board.



V. Install the Speaker

1. The speaker is installed as shown, lock the four screws

Installation tips and troubleshooting:

Issues	Things to check and things to do
Black screen, silent, Indicator light not work	※Check that the power cord is plugged into the main power outlet ※Unplug the power plug, wait 60 seconds, then plug the plug back to the main power outlet, and reboot ※Check if the power switch in the immobilizer is on.
No image	※Check storage media (such as SD card) is loose or not ※Check whether there is storage of mission content to play.
Image without voice	※ volume + ※Check the machine is set to mute, click on the remote control "mute" button to switch
With sound and abnormal color	※Adjust contrast, color and brightness settings. ※Reset
Horizontal dotted line	※This may be caused by electrical disturbances (such as hair dryers, nearby neon lights, etc.). ※Turn off the interfering device
Remote control does not work	※check the battery of the remote control ※Clean the remote control receiver on the machine
Network useless	※Check if the network is plugged in to the host ※Re-plug the cable plug ※Check if the server is working properly

Product Overview

