



Left Ear cup



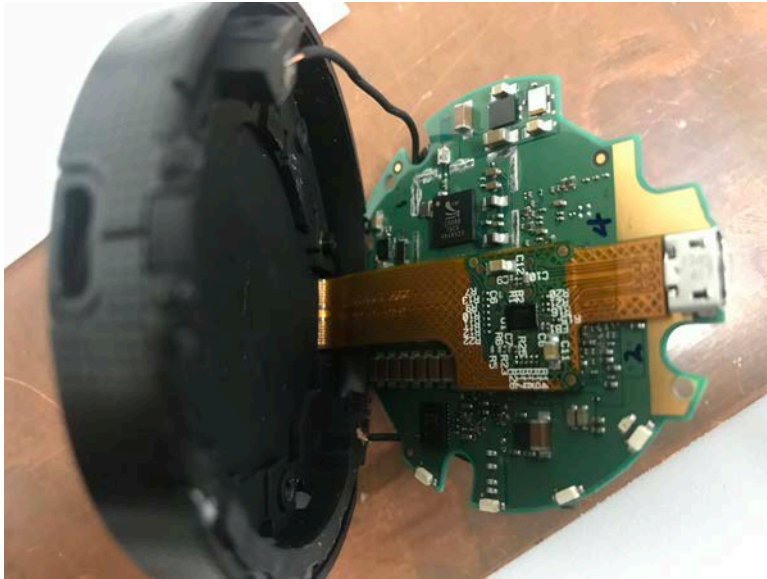
Right ear cup



overall looking



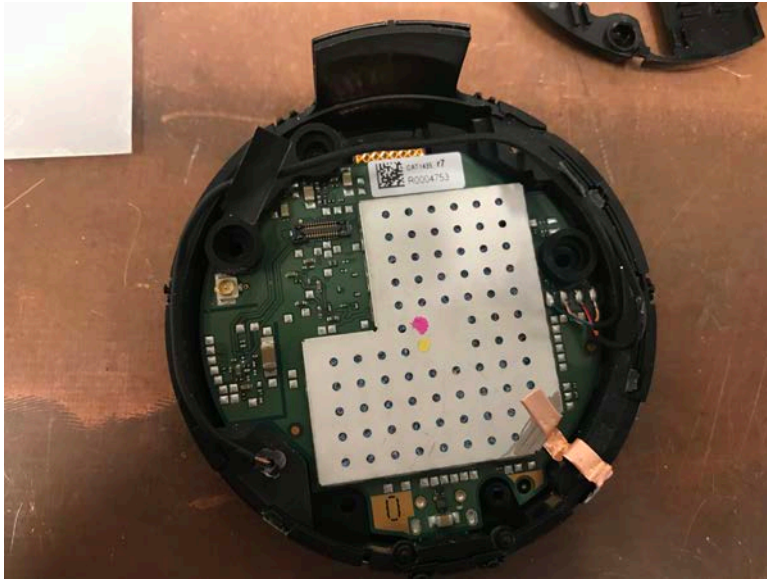
antenna cable routing



Main board, Capacitor sensor under the black rubber on the right portion



CAT 14535 main board, FPC Atmel and capacitance touch sensor



main processor under RF shielding case



main processor



main PCB, top side with Bluetooth SoC



USB charger and contact charging pins





buttons on the right ear cup



antenna