

RMCU M5 Manual



Product features description

- Install to Worldwide Excavator Wheel loader equipment
- Real-time monitoring and diagnosis of equipment
- Support integrated maintenance function for equipment
- Support for setting function restrict operation
- Connecting server using 4G networks
- Location information collecting as using GPS function

About User's guide

The contents of the user manual are subject to change depending on the manufacturer's service policy, etc.
There may be technical and editing errors or missing content.

FCC RF Radiation Exposure Statement

This equipment complies with FCC RF Radiation exposure limits set forth for an uncontrolled environment. This device and its antenna must not be co-located or operating in conjunction with any other antenna or transmitter. This equipment should be installed and operated with a minimum distance of 20 cm between the radiator and your body.

Copyright

All contents and rights of the instruction manual are in TAEHA MECHTRONICS Co., Ltd. and are protected under copyright law.

Where a manual is reproduced, modified, produced, or distributed without prior written consent, it shall be subject to criminal punishment in accordance with the Copyright Act.

Package Contents



Main Case

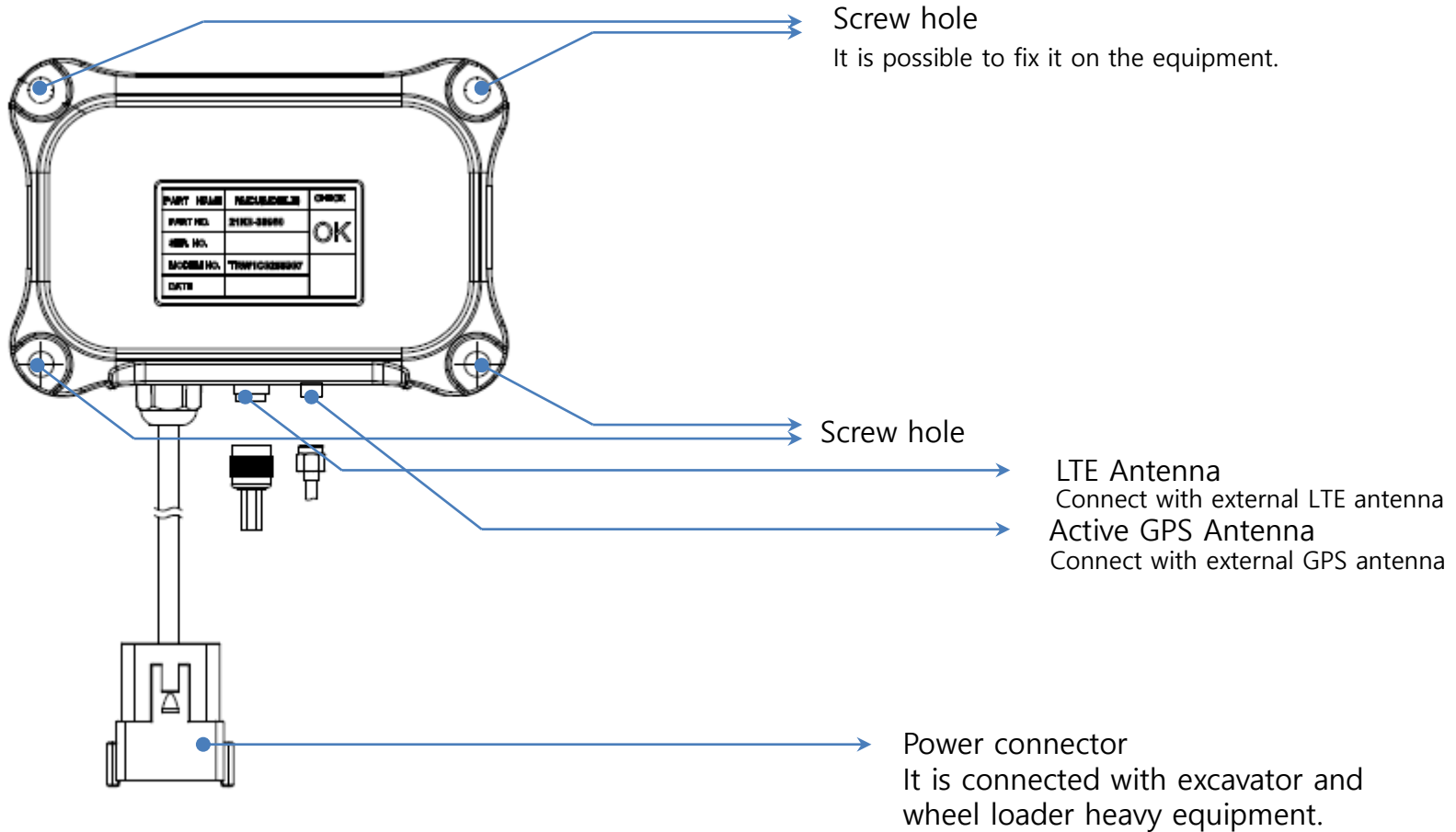


LTE, GPS
Antenna

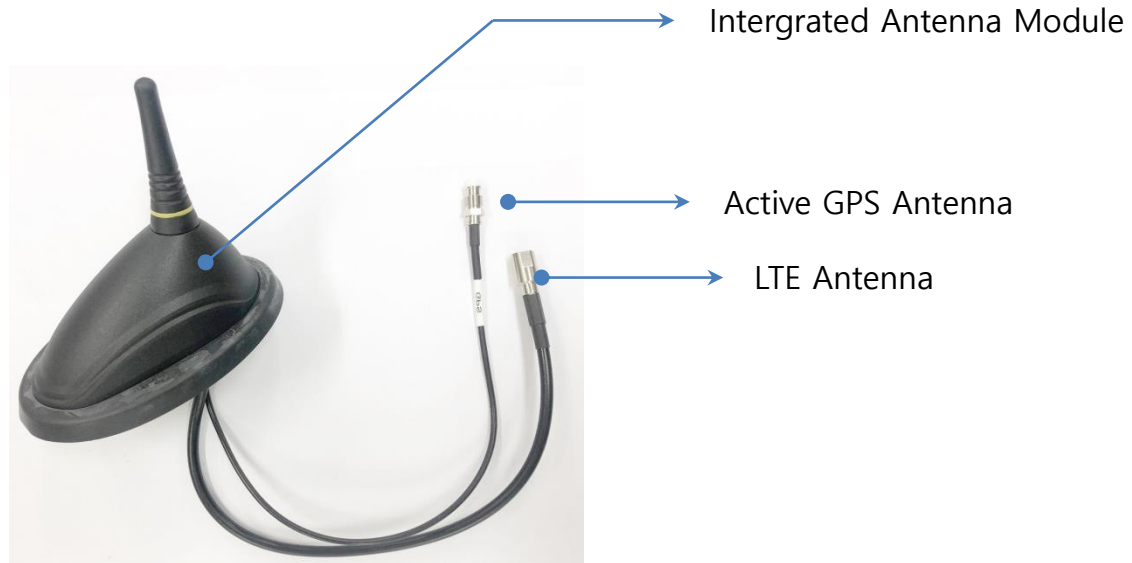


Antenna
Cable (Length = Approx. 305cm)

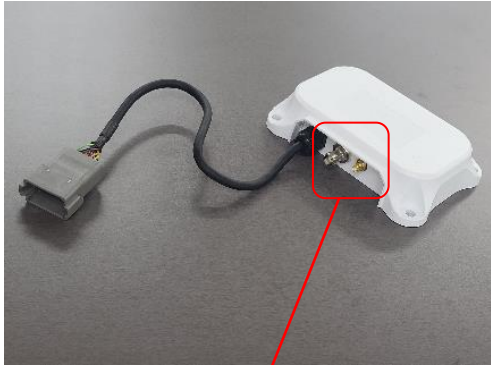
Product Overview



Product Overview

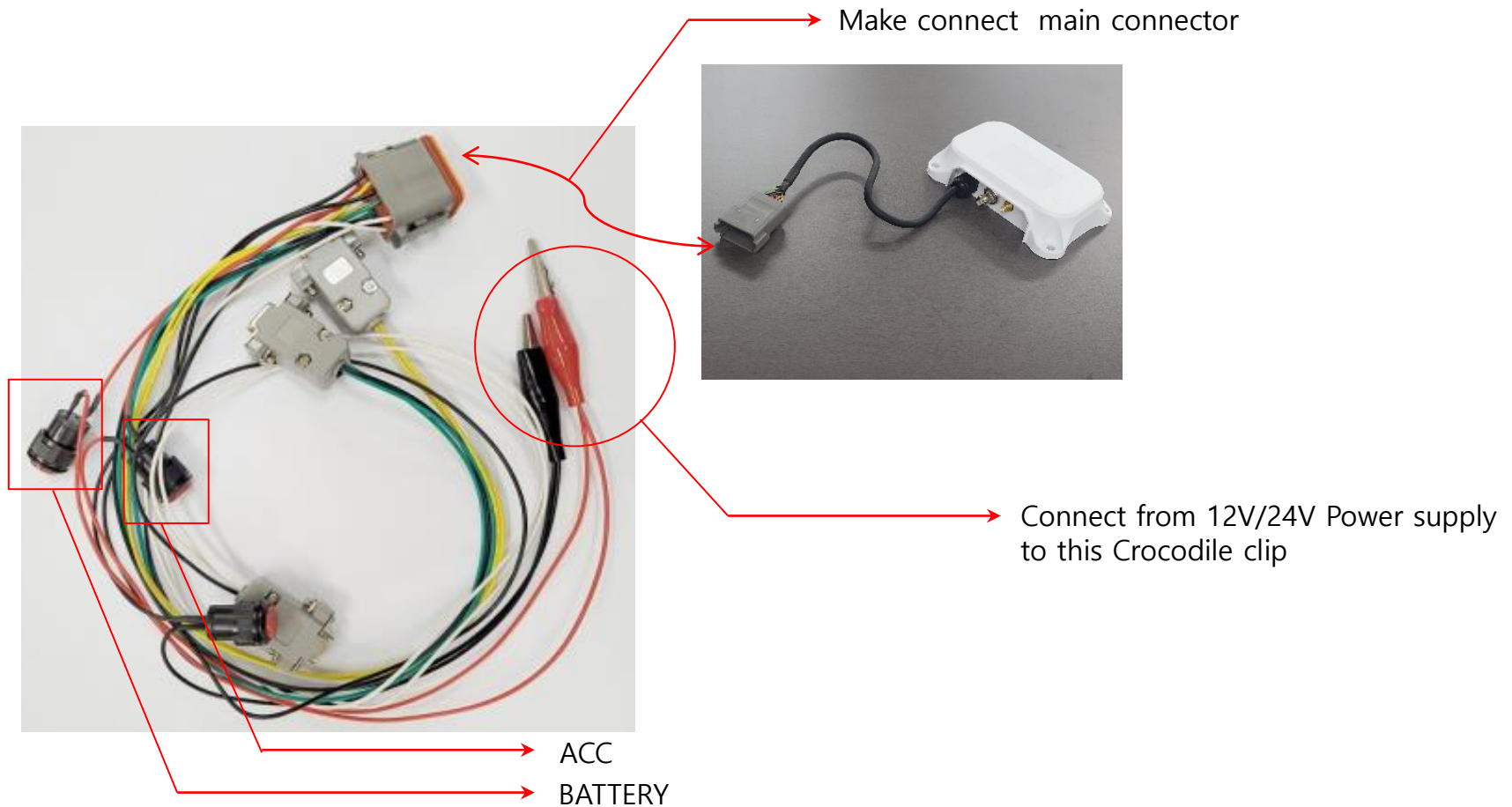


Device Installation



Tighten the screws as shown in the picture

Device Installation



To booting operation for the first time, it need to input the Battery power and ACC signal. A switch is provided for the development cable. For testing, use it in a pushed state.

Product spec

	Items	Unit	Description	Note
Basic Spec.	Operating temperature	[°C]	-30 ~85	
	Size	[mm]	160 x 120 x 40(WxDxH)	
	Normal Input Voltage	[V]	12 / 24 (Free voltage)	
	Input Voltage Range	[V]	9 ~ 32	
Location information	GNSS	-	50-Channel	GPS
Wireless Communication	Cellular	-	LTE/WCDMA Worldwide band support	Network operator ()