

### USB Mp3



### Folder



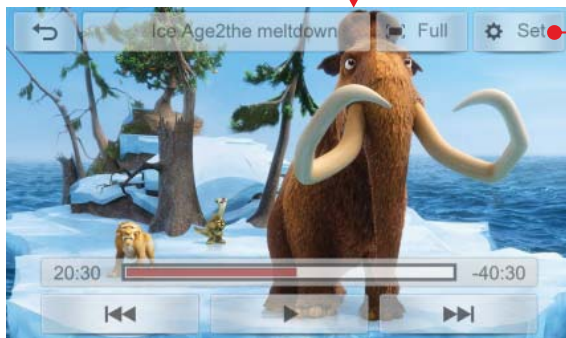
### USB Mp4



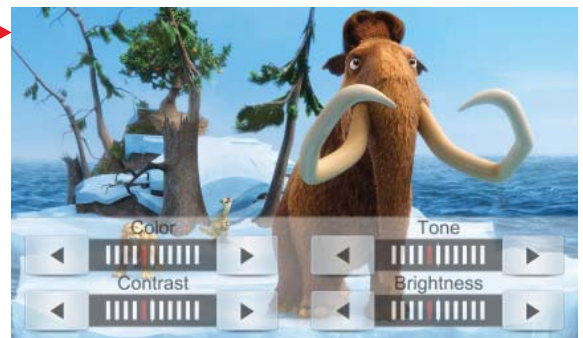
### Folder



### Image



### Set



## [USB] operation description

### MP3 player

Click on the [USB] button in [sources] function, to enter the USB MP3 user interface, as shown below:



- [ ⏮ ]: Press this button to play the previous song, and long press it to rewind.
- [ ⏸ ]: Press this button to start playback, and press this button in the playback state to pause playback. And again press this button to resume normal playback.
- [ ⏭ ]: Press this button to play the next song and press it to fast forward.
- [Mute]: Press this button to enter the silent mode, and then press it again to restore the original volume.
- [RPT-One]: It automatically repeat the currently playing clips, tracks.
- [Shuffle]: it randomly plays USB audio or video files.
- Note: In the case of not selecting [RPT-One] and [Shuffle], the system will be defaulted to auto list playback.
- [Folder]: Browse to play USB audio or video files.

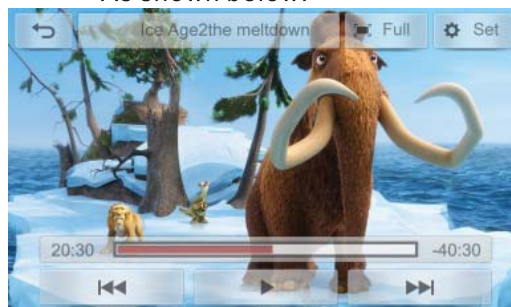
**Note**

- Click the progress bar to display the time of the play time node selection.

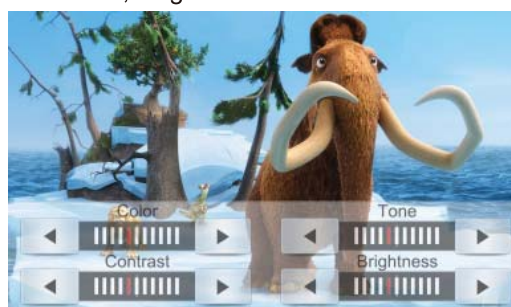
### MP4 player



- [ TRACK 1/10 ]: The clip number of the currently playing .
- [ 02:30 ]: It displays the time that the USB is currently playing.
- [ ⏸ ]: After the USB is plugged in, press this button to start playback, and press the button in the playback state to pause. And again Press this button to resume normal playback.
- [ ⏮ ]: Press this button to play the previous clip or track and press it to rewind.
- [ ⏭ ]: Press this button to play the next clip or track and press it to fast forward.
- [ Mute ]: Press this button to enter the silent mode.
- [ Image ]: Press this button to enter the video display and operation menu interface. As shown below:



- [ Full ]: After you press this button, the screen displays full screen video interface. Once again press the [Full] button, the screen displays the normal video interface. (Note: it is related to the USB video format.)
- [ Set ]: To adjust the video image color, contrast, tone, brightness. As shown below:



Press the [Folder] button, the screen as shown below:



Program browsing: press the [▲][▼] button on the touch screen to browse the list of folders or files.

[Upper]: Press this button to return to the previous interface.

[↶]: Press this button to return to [USB] operation interface.

[USB]: If you access the two USB devices, click this button to switch between the two USB devices arbitrarily; if you access a USB device, you can not switch it; if no USB device is accessed, this button will not be displayed. Note: If you use the encrypted USB, it will not be able to read. As shown below:



**Note**

- The AV (Audio & Video) formats and codec formats which the navigation supported are as follows:

Audio	File formats	codec formats	
	AAC	AAC	
	MP2	MPEG	
	MP3	MPEG	
	FLAC	FLAC	
	APE	MonKEY	
	M4A	AAC	
	RA	Cooker	
Video	File formats	Video codec formats	Audio codec formats
	AVI	XVID	MP3 AC3MP2
	MP4	XVID	AAC
	MPG	MPEG2	MPEG
	RMVB	Realvideo	Cooker RAAC

### [iPod] [Bluetooth] operation flow chart:

Main menu



Folder



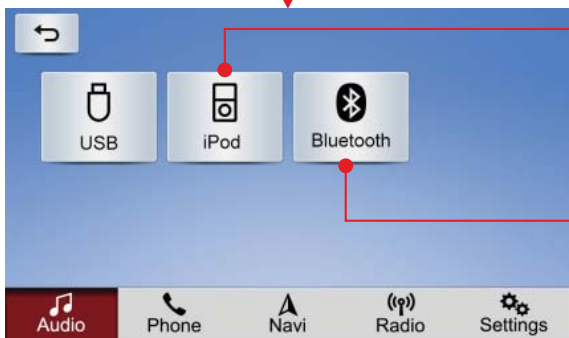
Audio



iPod



Sources



Bluetooth



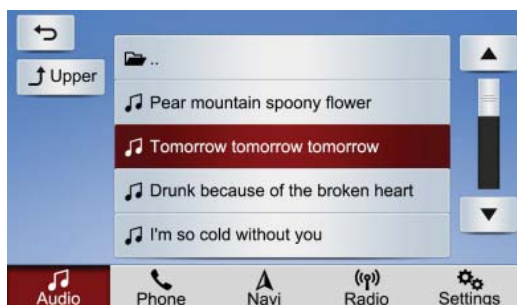
## [iPod] Operation description

Click the [iPod] in the [Sources] function to enter the iPod operation interface, as shown below:



- [ <<< ]: Press this button to play the previous track, and long press to rewind.
- [ || ]: Press this button to start playback, and press it in the playback state to pause playback. And again press it to resume normal playback.
- [ >>> ]: Press this button to play the next track, and long press it to fast forward.
- [ Mute ]: Press this button to enter the silent mode, and then press it again to restore the original volume.
- [ RPT ]: Press this button to enter the list loop, and then click it again to enter the single loop.
- [ Shuffle ]: It random plays ipod MP3 songs.  
Note: In the case of neither selecting [loop] nor [random], the system will be defaulted to the automatic list loop.
- [ Folder ]: Browse to play MP3 MP3 songs.

Press the [Folder] button to enter the following display:



Program browsing: press the [ ▲ ] [ ▼ ] button on the touch screen to browse the list of folders or files.

- [ Upper ]: Press this button to return to the previous interface.
- [ ↶ ]: Press this button to return to [iPod] operation interface.

## [Bluetooth] operation description

Click [Bluetooth] in the [Sources] to enter the Bluetooth interface, as shown below:



- [ <<< ]: Press this button to play the previous track.
- [ ▶ ]: In the case of connecting to the phone, press this button to start playing.
- [ || ]: Press this button in the playback mode to pause playback.
- [ >>> ]: Press this button to play the next track.

### Note:

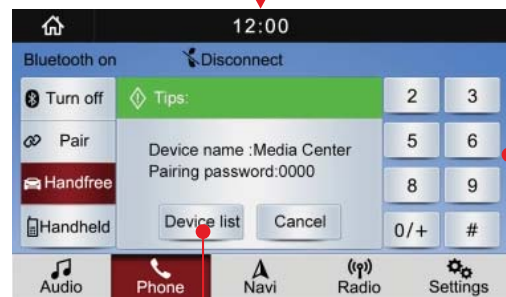
1. Please match the Bluetooth before using this function. The Bluetooth and mobile phone player should support this function.
2. After connected Android or iPhone to the Bluetooth of head unit, open the map in the phone to navigate. The head unit must be in Bluetooth Music page, then the car speaker can broadcast the phone navigation.
3. After connecting mobile phone to Bluetooth and playing Bluetooth music head unit, then pull out or plug in the USB cable, there will be two phenomena as below.
  - A. Bluetooth music of iPhone will pause, need to click the button to continue.
  - B. Bluetooth music of Android phone will pause 2 seconds and then continue to play automatically.

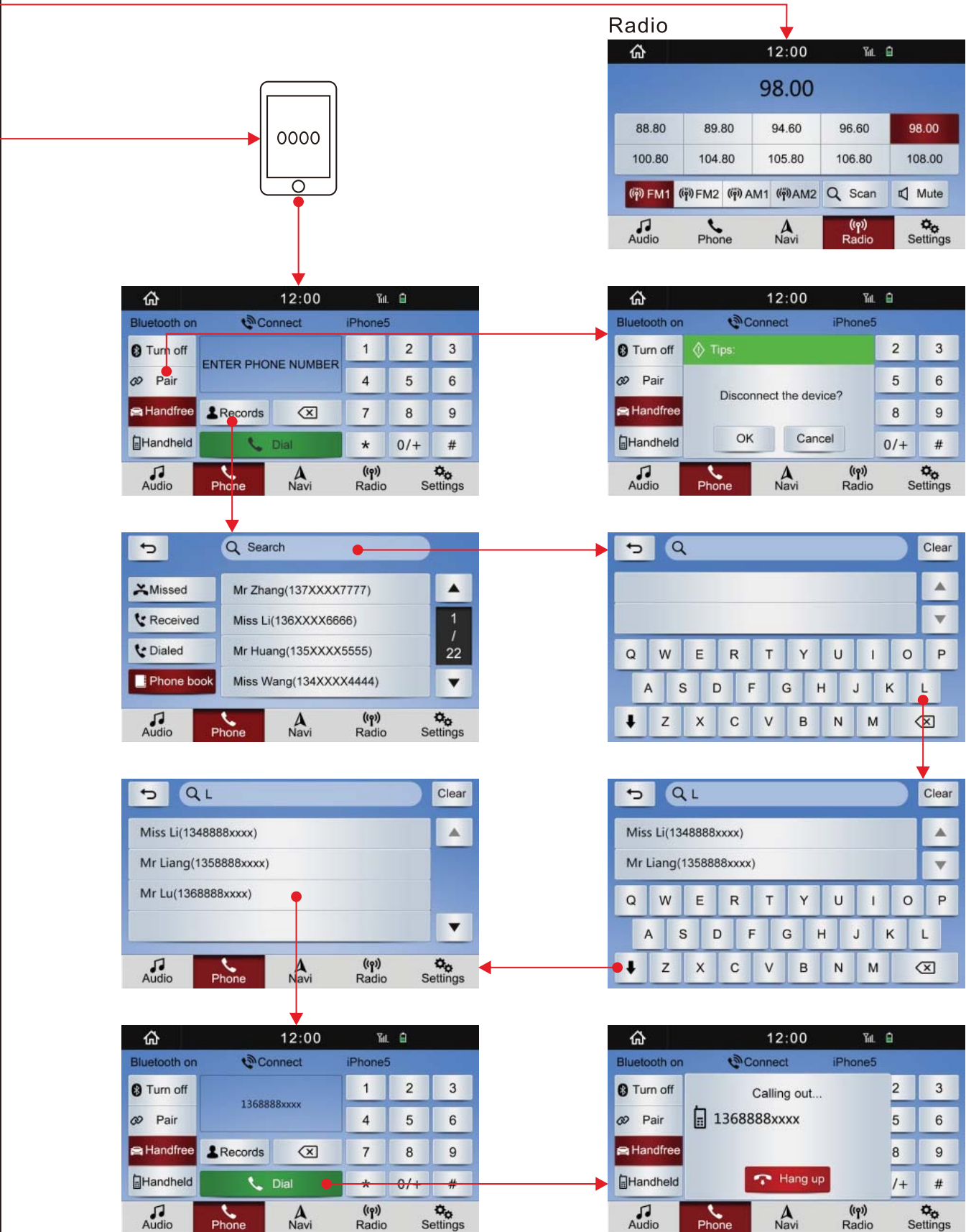
### [Phone] [Radio] operation flow chart

Main menu



Phone





## [Phone] operation description

Click the [Phone] button in the main menu, the interface is shown as below.



[Turn off]: in the case of Bluetooth connected, click this button, you can turn off the Bluetooth; If it is not connected, click [Turn on] button, you can open the Bluetooth of head unit.

[Pair]: Click this button to pair the Bluetooth of phone.

[Handfree]: Convert into the system calling status.

[Handheld]: Switch to the phone answer.

[Dial]: Dial out telephone or answer the calling.

[Delete]: Delete the wrong number.

[Records]: Click this button, the screen as shown below:



[Missed]: list of calls missed.

[Received]: List of calls received.

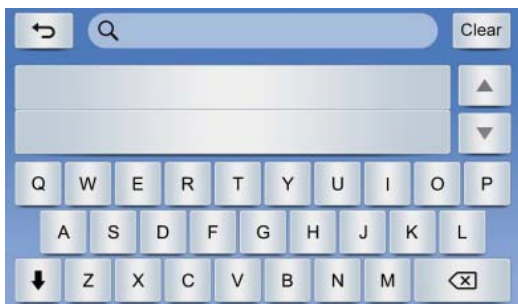
[Dialed]: list of calls dialed

[Phone book]: Contacts stored on the phone. (device should support it)

[▲] And [▼]: view recent calls

[↶]: Press this button to return to the [Phone] operation interface.

[Search]: Click above input field in the page, you can enter the Contacts to search for contacts as shown below:

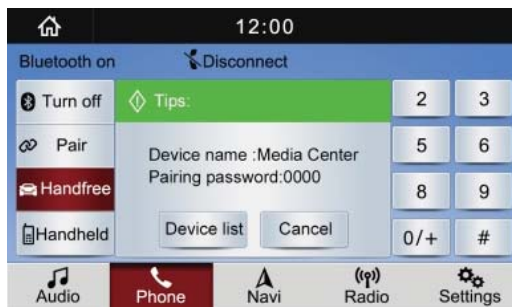


Enter the relevant letter of contact name, will pop up the relevant contact information. And then click the "↓" key on the keypad, the keypad will be hidden, as shown below:



### [Pair] operation description

Click [Pair] in the [phone] interface to enter the Bluetooth page as shown below.



There are two ways to make phone pairing.

1. to search the name of the head unit by phone, click the corresponding device name on the phone screen to enter the password to pair;
2. click the "Device list" in the prompt box to enter the device list page, select the previous connected phone records to connect as shown below.







Click on the phone name on the device list to enter the device connection settings, you can choose "Primary device", "Connect", "Delete" and other setting options. After connected to the "Pair", click the "Pair" button again, click "OK" button in the prompt box to disconnect.



## [Radio] operation description

Click on the main menu of **[Radio]**, enter the main interface of the radio. Receive the previous broadcasting station.

### Noted

- Automatically displays the list of radio stations that are stored in the default channel.
- In tunnel, behind the mountain, the cracks in the building, etc. The place where the waves are easy to be blocked, receiving signal will be weak.
- Even if the list shows broadcasting station, according to the real situation of the current location and the radio waves, that sometimes can not receive the signal.



[Scan]:

Search automatically to browse radio channel, keep in automatically radio channel for searching.

[Searching manually]:

To select the radio station in need in the bottom of radio function interface.

If FM/AM want to switch from one mode to another one, please press the corresponding button.

Each mode can provide 10 pieces storage cell which can store in common radio station. To touch the radio frequency, can be listen this channel. If want to revise or set the cell of radio frequency, the operation is to be as below:

1. To search in selecting of radio frequency.
2. To select one of cell for 10 pieces of Cell, to press longer this cell in 2 seconds, the radio frequency in need will be stored, in this cell, it shows this radio frequency.

[98.00MHz]: The frequency is playing in currently radio station.

[FM1/FM2]: Press this button to select in stored FM station.

[AM1/AM2]: Press this button to select in stored AM station.

[Mute]: Press this button to enter Mute mode, press this button again, can back to previous volume.

### Noted

- If due to disconnect the battery or blown off fuse and power outages, stored preset stations may be deleted.

### [Sound] [Clock] setting operation flow chart

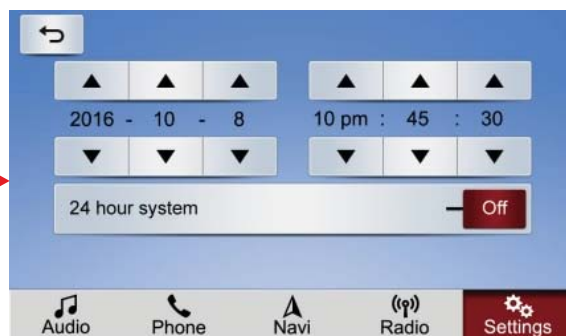
Main menu



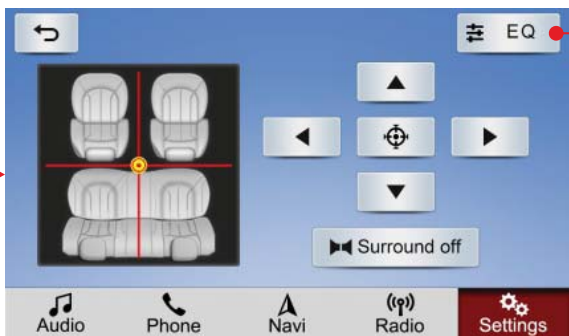
Settings



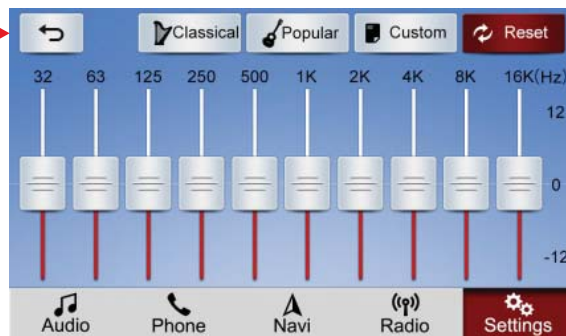
Clock



Sound



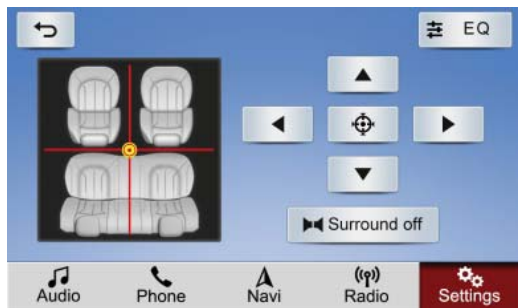
EQ



## [Sound] setting operation description

The pros and cons of sound effects are largely depends on the treble, bass mixing sound level. In fact, a variety of music and vocal programs in different sound level of the treble, bass combination will be the more pleasant. It is also important to keep the best balance between the left and right stereo channels as well as the front and rear sound levels.

As shown below:



[▲][▼]: It adjusts the sound balance between front and rear speakers.

[◀][▶]: It adjusts the sound balance between the left and right speakers.

Each time you press [▲] or [▼], [◀] or [▶], the red bar will move one unit in the corresponding direction.

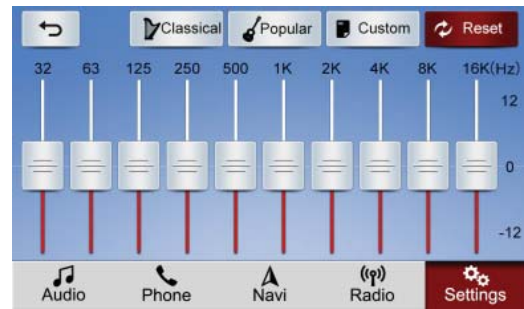
[↶]: Press this button to return to the previous operation interface.

[Surround off]: It is to raise the volume of the high and low frequency components at low volume so that the loudness ratio of the low, medium, and high parts remains the same as the loudness at high volume.

**Note** • When you listen to a stereo record or broadcast, changing the left / right balance will increase the volume of a group of sounds while reducing the volume of another group of sounds.

### EQ

Equalizer in the audio equipment is an electronic device that can adjust the amplification of the electrical signal of various frequency components separately. Through the adjustment of electrical signals at different frequencies, it compensates for the defects of the loudspeakers and sound fields, and compensates and modifies various sound sources and other special effects. Ordinary Equalizer on the mixer can be adjusted only between high frequency, intermediate frequency, low frequency three frequency electrical signal.



[Classical]: Classical music also is improved in the high and low two parts, which mainly highlights the performance of musical instruments.

[Popular]: It requires that both the combination of vocals and instrumental music are very average, so the curve of the volatility is not great.

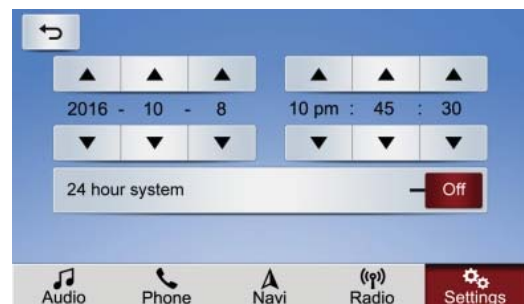
[Custom]: The user can adjust the equalizer according to their preferences.

Note: After setting the custom function, you can save the custom settings by long pressing this button.

[Reset]: Resets all equalizers.

## [Clock] setting operation description

Press [Clock] button in the [Settings], you can adjust the system time through [▲] [▼], as shown below:



[24 hour system]: You can set the system time to 12-hour or 24-hour [On] [Off].

## [Display] setting operation flow chart

Main menu



Settings



Display



## [Display] setting operation description

Press [Display] button in [Settings], as shown below:



**[Brightness]:** In the boot state, the user can set the screen to among three brightness modes of [Dark] [Mid] and [Bri].

**[Mode]:** Click this button to set the navigation screen to [Day] or [Night].

**[Key light intensity]:** You can adjust the brightness of the panel key light by [ ▲ ] or [ ▼ ] to keep the brightness in accordance to the other keys.

**[Auto dim]:**

When it is set to [On]:

**[Auto headlight models]:**

**[Auto headlight]: [Day & Night mode]** function can not be set manually. When the car in the dark environment, the system will automatically switches to the night mode, and the key light is on while the screen dims; when the car in the bright environment, the system will automatically switches to day mode, and key light is off while the screen becomes bright.

**[Non-automatic headlight]: [Day & Night mode]** function can not be set manually. It needs to turn on the car headlight, and the system switches to night mode when the car in the dark environment, and the key light is on while the screen dims; in other way it is day mode, and the key light is off while the screen becomes bright.

**[Non-automatic headlamp models]: [day and night mode]** function can not be set manually. It needs to turn on the car headlight, and the system switches to night mode when the car in the dark environment, and the key light is on while the screen dims; in other way it is day mode, and the key light is off while the screen becomes bright.

When it sets to [Off]: Day / night mode can only be set manually by clicking [day / night mode] option on the screen. The system can not be controlled by car headlight and ambient light.

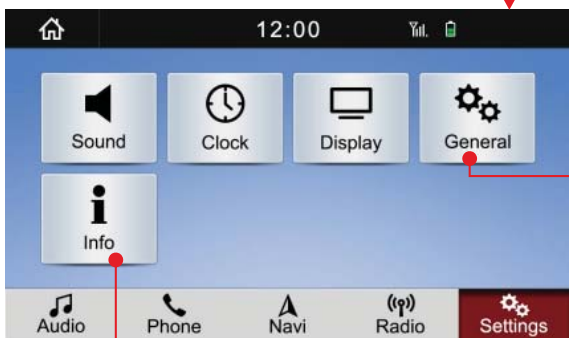
**[ ⏻ ]:** Click this button to turn off the navigation screen.

### [General] [Info] setting operation flow chart

Main menu



Settings



General

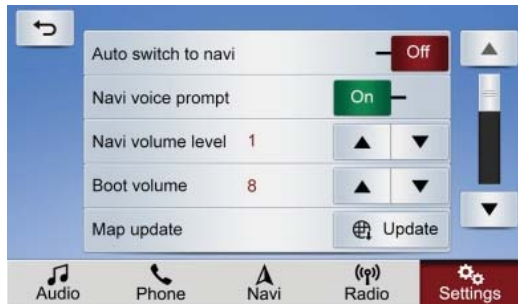


Info



## [General] setting operation description

Click the [General] button in the [Settings] of the main menu to enter the interface shown as below:



### Auto switch navi [On] [Off]

When it is set to [On], it will automatically switches from the current operation screen to the navigation screen when the other screen operations are finished for 10 seconds. When it is set to [Off], this function will be turned off.  
Navi voice prompt [On] [Off]

When it is set to [On], the navigation voice prompt is turned on. When it is set to [Off], the navigation voice prompt is turn off.  
Navi volume level [ ▲ ] [ ▼ ]

It can be adjusted through [ ▲ ] [ ▼ ].  
Boot volume [ ▲ ] [ ▼ ]

You can adjust the boot volume by [ ▲ ] [ ▼ ].  
[Map update]: Click the [Update] button to set the map update.

Continue to click [General] to set the [ ▼ ] on right side, to enter the [General] settings interface in the second page, as shown below:



[System reset]: Click the [Reset] button to select the reset system. Long press to restore factory settings.

[↶]: Press this button to return to the setting operation interface.

## [Info] setting operation description

Click [Info] button to display information about MCU, iPod, Barcode, Bluetooth, MPEG, UUID, Hardware, as shown below:



## Standby interface



Vertically press the center of the vehicle button panel knob, the system will enter the standby interface; again press it, the system will return to the current interface, as shown above.

# Appendix



## Use the Monitor correctly

---

### Notes of use

- \* Do not expose the monitor under the direct sunlight or high temperature place, otherwise, LCD failure may happen. Please use the monitor within the following temperature:

Using temperature: -10C -+50C

Preservation temperature: -12C -+80C

- \* Please do not press the surface of LCD, otherwise, it probably leads to failure.
- \* In vehicle with safety air bag device, do not hinder the working of safety device.

## About LCD Screen

---

- \* The LCD monitor sometimes with a black dot or a flashing dot (bright dot), this is a unique phenomena of LCD monitor, rather than failure.
- \* When using in cold area, after connecting the power, the LCD may be a little bit dim initially, but the brightness will restore normal after a while.
- \* LCD is probably difficult to watch clearly because of the direct sunlight.

## About the TFT

---

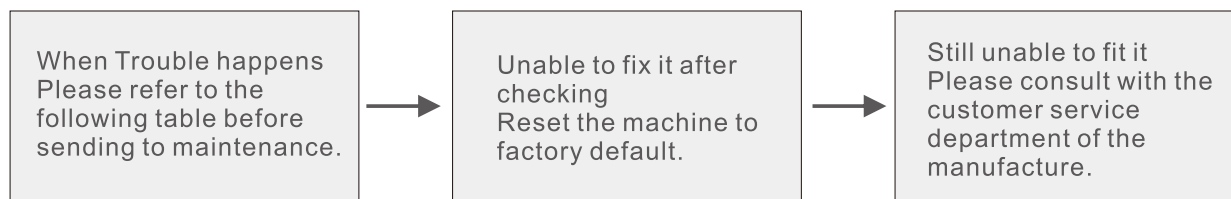
- \* In order to LCD with back-light, inner LCD uses small TFT.
- \* The life of TFT is about 10000hours (In cold area, the life will be shorten), The LCD will turn dim or can not display once the TFT is close to its using life. Please consult the supplier for help.

## About Maintenance

---

- \* When cleaning the dirt on screen, pls turn off power and use soft cloth to wipe it.
- \* When wiping monitor, please avoid scratching by fingernail.
- \* Do not use wet cloth, volatile oil or diluents. Do not keep corroded items away from LCD Monitor..

## Trouble shooting



## Common issues

Trouble	Reason	Solution
Unable to power on, Not working	All cables and connectors are not connected correctly	Reconfirm connection stably and correctly
	Blown Fuse	Check reason of blown fuse, and replace it with the fuse of the same specification
	For noise reason, built-in computer error	Press Reset button
No response to touch button on screen, or being insensitive	Touch button shifting over actual reaction location	Calibrate the Coordinate of the Touch screen
Black dot or bright dot on LCD screen	Unique LCD phenomena, rather than failure	
Dark LCD picture	Improper brightness adjustment	Adjust the brightness
	Too code in vehicle	Low surrounding temp. Leads to dark monitor. Use heater to warm up the interior vehicle.
No Sound	Volume is 0	Increase volume
	Connection error	Confirm correct connection
No image display	Not connect to parking brake line	Connect to parking brake and execute it
	No parking brake	Press PWR key or touch the screen again
Volume is small	Volume at low level	Turn up volume
No navigation system image display	Not being switched to navigation	Switch image into navigation system
The front and rear speakers are mute.	Improper volume adjustment in front or rear speaker	Make sure correct adjustment and setup
The Left or right speakers are mute.	Improper volume adjustment in left or right speaker	

## Navigation

Trouble	Reason	Solution
Navigation system does not work or often loaded into the path of the running navigation interface.	The maps program just completed the update.	Please re-press the "Browse" button to set up the correct one, the correct path is "\SDMEM\Dontpanic\Dontpanic.exe". And
	Navigation path is not correct.	then tick the "Auto run next time" button, in the end, press the "Run Navigation" button enter the navigation.
	The map card does not fit well or damaged.	First at all, please reboot vehicle navigation system. If can't work, please re-install the map card. If both can't work, Please turn to the retailer accordingly.

## Specification

---

(With the improvement of product, please forgive that we do not offer extra notice)

### Universal

Max. Current Consumption: 10.0A  
System Power: DC14.4V (11V-16V)  
Grounding : Negative Pole Grounding  
External Image output level: 1Vp-p/75  
External Sound Max. Output level: 1.5V/22K  
Image Output Level: 1Vp-p/75

### GPS

Approach: L1, C/A Code GPS, SPS standard  
Positioning Service  
Receiving Way: 12 Channels  
Receiving Frequency: 1575.42MHz  
Sensitivity: -130dBm  
Testing updating time: about 1/second

### AMP, Audio Part

Rated Power Output: 48W (12W\*4)  
Max. Power Output: 140W (45W\*4)  
Speaker Impedance: 4Ω

### FM Tuner Section

Frequency range (50kHz space): 87.5 MHz –  
108.00 MHz

Practical sensitivity:  $\leq 12$  dB $\mu$ V  
Locking sensitivity: 35 dB $\mu$ V  
SNR: Over 50dB (IHF-A network)  
THD: 0.3%  
Frequency response:  $\geq 2$ KHz  
Stereo crosstalk:  $\geq 27$ dB

### AM Tuner Section

Received frequency band: 522KHz ~ 1620  
KHz (9 KHz)

Practical sensitivity:  $\leq 28$  dB $\mu$ V

Read all items carefully before installation, and suggest go to professional and authorized shop for installation.

### Installation Steps

---

1. Check and make sure all the attached accessories is available
2. Please withdraw the original Radio
3. Fix the located screws and plastic in AVN Head Unit (If not attached, no need to fix)
4. Following the installation guide to install the Head Unit, make sure all cables connected well; start the engine, turn on head unit for testing; if can not turn on the Head Unit, please check the cables connection correctly or not till the problem solved; if working fine, turn off ACC!
5. Put the Head Unit back the original Radio Place, and fix it well!



### Special Note items

1. Be careful not to break the original cables
2. To avoid short circuit issue, it is recommended to withdraw the Negative pole of Battery.
3. To avoid unexpected damage, do not plug harness with power.
4. Please check the attached cables label matching the car type or not.
5. Make sure original cables and HeadUnit cables connected correctly
6. Before power on, please make sure all connection correctly, Battery (+) (Yellow) and GND (Black) not short circuit. Wrong connection of Power cable will bring damage to head unit and car.
7. Do not connect head unit's power cable to other product's power directly.
8. Attached Map Card already inserted in Card slot.

---

**Note**

- please check the "Installation flow chart and attention" for reference!
-

**Poisonous and harmful substances or element table name and content**

Part Name	Poisonous and harmful substances or elements						Environment protection use period
	Pb	Hg	Cd	Cr6	PBDE	PBB	
Main Board	X	○	○	○	○	○	10
Display screen	○	○	○	○	○	○	10
Platstic	○	○	○	○	○	○	10
Metal	X	○	○	○	○	○	10
Non-metal	○	○	○	○	○	○	10
Data wire	○	○	○	○	○	○	10
Antenna	○	○	○	○	○	○	10
Accessory	○	○	○	○	○	○	10

O: Means that the content of toxic and harmful substances in the parts in all homogeneous materials is lower than the standard of GB/26572-26572

X: Means that the content of toxic and harmful substances in the parts in all homogeneous materials is higher than the standard of GB/26572-26572

Attention: the reason of "X" for the product is not alternative available technologies or parts at this stage.

This product by the environmental protection use period refers to the use of the information in this guide provides conditions.

Sales agent: Ford India Private Limited  
Address: National Parts Distribution Center, S P Koil post, Chengalpattu.  
Pincode-603204, Tamilnadu, India  
Manufacturer: Guangdong Creator & FlyAudio Ele & Tech Co., Ltd.  
Address: Floor 3, Building F, Creator & FlyAudio Xinyong Sheng Industrial  
Park, No.3 Industrial District, Gekeng Village, Hengli Town,  
Dongguan City, Guangdong Province, China, 523460  
Issue Date: 1st Jul.2017  
Execute Standard: Q/TYFG 1-2016



BP02V0198R0