

GQ5020TH

User Guide

Contents

I. CAUTIONS ON MOBILE PHONE USE.....	4
1.1 <i>INTERFERENCE</i>	4
1.2 REASONABLE USE	4
1.3 QUALIFIED MAINTENANCE SERVICE.....	4
1.4 <i>WATER-RESISTANCE</i>	4
1.5 EMERGENCY CALLS	4
2 PRECAUTIONS FOR USE OF BATTERY	4
3 CAUTIONS FOR CHILDREN	5
II. KEYS AND PARTS	6
III. <i>START TO USE</i>	7
3.1 <i>TO INSERT SIM CARD(S)</i>	7
3.2 CHARGE THE BATTERY.....	9
IV. BASIC FUNCTIONS.....	9
1. LOCK AND UNLOCK THE SCREEN	9
2. <i>MAKE IT YOURS</i>	11
3. SWITCH TO RECENTLY USED APPLICATION.....	17
4. <i>MAKE A CALL</i>	18
5. <i>CALL LOG</i>	19

6. ANSWERING PHONE CALLS AND REJECTION	20
7. ADD A CONTACT	21
8. SEND AND RECEIVE MESSAGE(S)	22
9. BROWSER THE WEB	24
10. ENJOY MUSIC	24
11. DOWNLOAD APPLICATIONS FROM PLAY STORE	25
12. MANAGE APPLICATIONS	26
13. APPLICATIONS & UTILITIES	27
14. SETTINGS	27
V. TECHNICAL INFORMATION	32

I. Cautions on mobile phone use

1.1 Interference

All phones may be interfered, which affect phone calls.

1.2 Reasonable use

Use only in the normal position. Do not touch the antenna area unnecessarily.

1.3 Qualified maintenance service

Only qualified personnel may install or repair this product.

1.4 Water-resistance

Your device is non water-resistant. Keep it dry.

1.5 Emergency calls

Ensure the phone is switched on and in service. Enter the emergency number and press the Dialer icon.

2 Precautions for use of battery


2.1 Do not dispose of batteries near or in a fire to avoid dangers.

2.2 Do not dispose of batteries in the garbage. Dispose of batteries to assigned battery recycling center.

3 Cautions for children

Keep your device out the reach of children in case of accidental injury caused by incorrect use of the device as toys.

11. Keys and parts

- 
1. Audio jack
 2. USB Connector
 3. Front Camera
 4. Receiver
 5. Light sensor / Proximity sensor
 6. LCD
 7. Mic
 8. Adjust volume key
 9. Power key
 10. Rear Camera
 11. Flashlight
 12. Speaker

III. Start to use

3.1 To insert SIM card(S):

Insert the SIM card correctly in the card slot(s) (See figure below), suggest switch off the phone when you insert SIM card.

Insert the Micro SD card into the slot with the correct direction (See figure below), suggest switch off the phone when you insert SIM card.

Note: Use only compatible memory cards with this device. Incompatible memory cards may damage the card or the device and corrupt the data stored in the card.

3.2 Charge the battery

During charging, the battery indicator on the phone is a thunder icon. If the device is switched off during charging, there will still be a charging indication on the screen that shows the phone is being charged. If the device is overused when the battery is low, the charging icon might take some time to appear.

When the battery indicator on the screen display 'Battery is full', thunder icon will disappear, which means the completion of charging. If the phone is switched off during charging, the screen will display ' Battery is full '. It generally takes 4 hours to charge the battery. During charging, the battery, the device and the charger will get hot. This is normal.

Unplug the charger from the AC electrical outlet and disconnect the wiring between the phone and the charger after charging. .

Cautions: Charge the phone in a well ventilated place in which the temperature is between -10°C to +55°C . Use the charger provided by the manufacturer only. The use of unconfirmed charger may lead to dangers and violate the manufacturer's warranty clause. If the temperature is too high or too low during charging, the device will automatically send a warning and stop charging to avoid damage to the battery or any danger.

IV. Basic functions

1. Lock and unlock the screen

Press power button to enter Sleep mode and meanwhile the screen will be locked; press power button again to wake up and then swipe up for unlock.



2. Make it yours

2.1 Home screen: It is your starting point to access all the features on your phone. It displays application icons, widgets, shortcuts, and other features. Long press home screen and Modify Wallpaper.



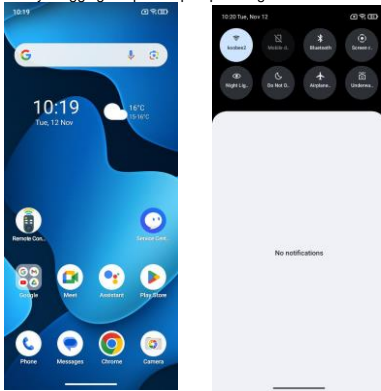
2.2 Long press **Home** screen, and then you can Modify Wallpaper; or enter Launcher and long press and hold an application till the screen vibrates, and then loosen your hold finger.



Long press and hold the widget or icon you want to move. Once the phone vibrates, don't loosen your hold on the icon. Drag the widget or icon to a new location on the screen. Press and hold on an icon till the phone vibrates, and drag the widgets or icon to the trash for remove!

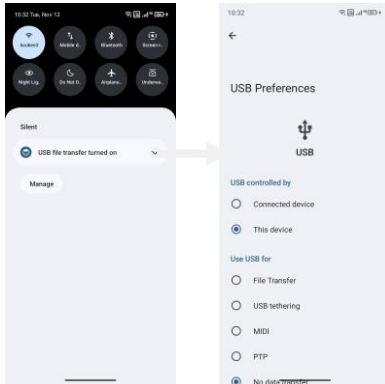


2.3 Notification Bar: At the top of the screen, the Status Bar displays the time, status, and notifications. If there is a new message, missed call or something in the notification bar, you can drag it down to open notification panel and click the desired one to have a view. When you finished, you can close it by dragging the panel up or pressing “Back”.



2.4 Android™ and computer connection

If you connect your phone to PC via USB, you can find the USB options, choose This Device - file Transfer option, you can see your phone memory in PC, this is same function like USB storage.



3. Switch to Recently Used Application


Press menu key.



Touch and slide this place can choose to open the history application

Touch this icon to close all history application

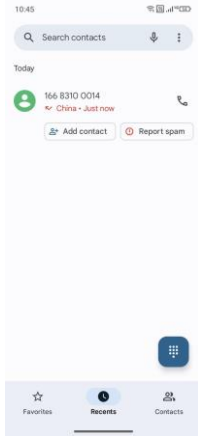
4. Make a call

Click  and enter a complete phone number to make a call. Your phone supports smart search.



Swipe to right to view Call history and Contacts.

5. Call log

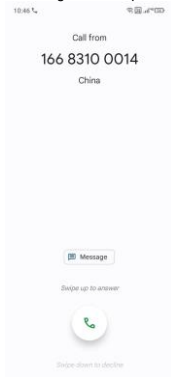


Press the number if you want to see the details , send message or call back, there are three options for you.

Press the number, you can view the contact details, send a message or call back.

6. Answering phone calls and rejection

When there is an incoming call, you can drag the icon up or down to answer or hang up it directly.



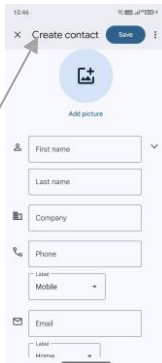
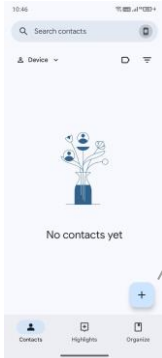
7. Add a contact



Touch to enter contact



Touch to add a new contact

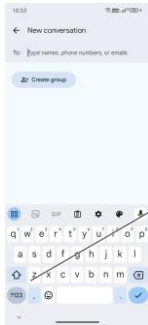


Click here to add new contact and in this page press menu key to enter menu view, setting, etc.

8. Send and Receive message(s)



Touch enter to messaging, touch “Start chat”.



Tap this icon to select desired contact from phone book.

Touch to switch the digital input and symbols

Press space or a punctuation mark to enter the highlighted suggestion

When you are composing a new text message, you can select text for cutting or copying. The selected text is highlighted in blue

Tap **O** to create "Attach" including Pict 图片 Vid 视频 Audios, etc MMS.SMS



Then a new message comes, you can read by dragging notification panel and click the message, or entering Message to read it directly
Long press one of the all message threads, you can delete it"

9. Browse the Web

9.1 Set up Internet/Data connection

Enter Settings > More..., scroll down to find out Mobile network, and then enter "Access Points Names, choose the desired WAP account.

9.2 Switch on Data connection or Wi-Fi

To browse the web, you need to switch on Data connection. If there is Wi-Fi around, you can switch on Wi-Fi to use it browse the web.

10. Enjoy music

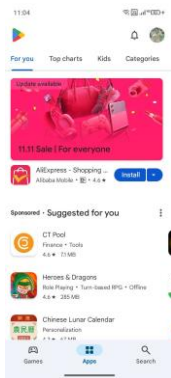
When you copy music to your SD card, the Music player searches the card for music files and builds a catalog of your music, based on information about each file that is stored in the file itself.



11. Download applications from Play Store

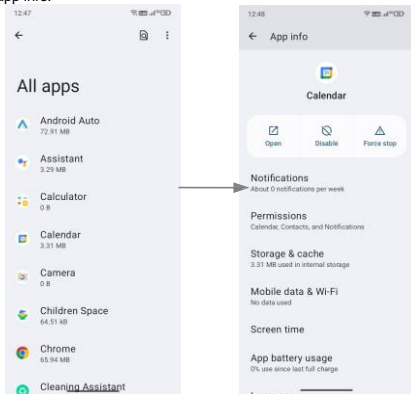
11.1 Add Google™ account

11.2 Enter play store and download apps



12. Manage Applications

Enter Setting > App.
You can see app info.



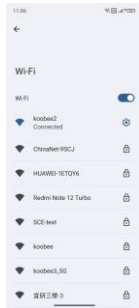
13. APPLICATIONS & UTILITIES

For your entertainment purpose, your device is provided with several interesting games, applications and utilities, such as Gmail, Email, Play Store. Before accessing the applications, please turn on the data connection or connect to wifi.

14. Settings

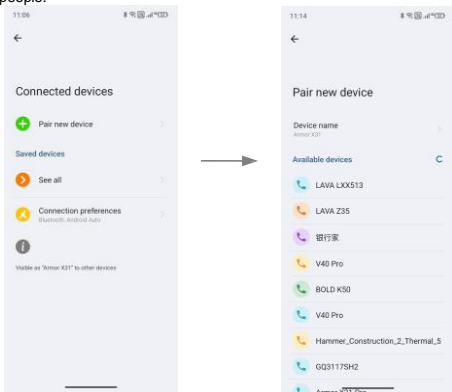
14.1 Wi-Fi

Open Wi-Fi, search nearby Wi-Fi and connect it, then you can use Internet or download apps for free.



14.2 Bluetooth

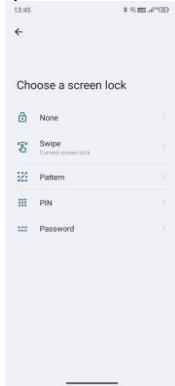
Open Bluetooth, connect to other phone, you can share something like music, photos, movies etc to other people.



14.3 Security

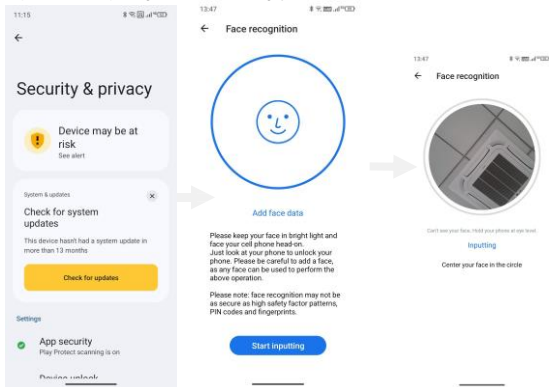
Screen lock.

There are four screen lock ways for you to choose :Slide, Pattern, PIN, Password.



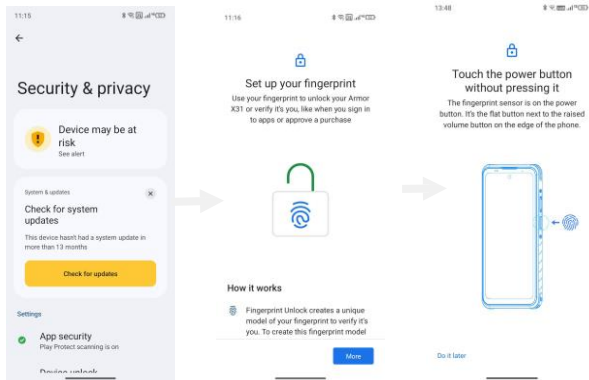
14.4 Face ID

Click Settings - Security&privacy - Device Unlock - Face&Fingerprint Unlock - Face Unlock, follow the prompts ,after completing the face recording, you can use the face unlock function.



14.5 Fingerprint

Click Settings - Security&privacy - Device Unlock - Face&Fingerprint Unlock - Fingerprint Unlock Unlock, follow the prompts ,after completing the fingerprint recording, you can use the fingerprint unlock function



FCC Statement

1. This device complies with Part 15 of the FCC Rules. Operation is subject to the following two conditions:

(1) This device may not cause harmful interference.

(2) This device must accept any interference received, including interference that may cause undesired operation.

2. Changes or modifications not expressly approved by the party responsible for compliance could void the user's authority to operate the equipment.

NOTE:

This equipment has been tested and found to comply with the limits for a Class B digital device, pursuant to Part 15 of the FCC Rules.

These limits are designed to provide reasonable protection against harmful interference in a residential installation.

This equipment generates uses and can radiate radio frequency energy and, if not installed and used in accordance with the instructions, may cause harmful interference to radio communications. However, there is no guarantee that interference will not occur in a particular installation. If this equipment does cause harmful interference to radio or television reception, which can be determined by turning the equipment off and on, the user is encouraged to try to correct the interference by one or more of the following measures:

Reorient or relocate the receiving antenna.

Increase the separation between the equipment and receiver.

Connect the equipment into an outlet on a circuit different from that to which the receiver is connected.

Consult the dealer or an experienced radio/TV technician for help.

SAR Information Statement

Your wireless phone is a radio transmitter and receiver. It is designed and manufactured not to exceed the emission limits for exposure to radiofrequency (RF) energy set by the Federal Communications Commission of the U.S. Government. These limits are part of comprehensive guidelines and establish permitted levels of RF energy for the general population. The guidelines are based on standards that were developed by independent scientific organizations through periodic and thorough evaluation of scientific studies. The standards include a substantial safety margin designed to assure the safety of all persons, regardless of age and health. The exposure standard for wireless mobile phones employs a unit of measurement known as the Specific Absorption Rate, or SAR. The SAR limit set by the FCC is 1.6 W/kg. * Tests for SAR are conducted with the phone transmitting at its highest certified power level in all tested frequency bands. Although the SAR is determined at the highest certified power level, the actual SAR level of the phone while operating can be well below the maximum value. This is because the phone is designed to operate at multiple power levels so as to use only the power required to reach the network. In general, the closer you are to a wireless base station antenna, the lower the power output. Before a phone model is available for sale to the public, it must be tested and certified to the FCC that it does not exceed the limit established by the government adopted requirement for safe exposure. The tests are performed in positions and locations (e.g., at the ear and worn on the body) as required by the FCC for each model. The highest SAR value for this model phone when tested for use at the ear is 0.809W/Kg and when worn on the body, as described in this user guide, is **0.666W/Kg**(Body-worn measurements differ among phone models, depending upon available accessories and FCC requirements). The maximum scaled SAR in hotspot mode is 0.666W/Kg. While there may be differences between the SAR levels of various phones and at various positions, they all meet the government requirement for safe exposure. The FCC has granted an Equipment Authorization for this model phone with all reported SAR levels evaluated as in compliance with the FCC RFexposure guidelines. SAR information on this model phone is on file with the FCC and can be found under the Display Grant section of <http://www.fcc.gov/oet/fccid> after searching on FCC ID: 2AOWK-5020TH Additional information on Specific Absorption Rates (SAR) can be found on the Cellular Telecommunications Industry Association (CTIA) web-site at <http://www.wow-com.com>. * In the United States and Canada, the SAR limit for mobile phones used by the public is 1.6 watts/kg (W/kg) averaged over one gram of tissue. The standard incorporates a substantial margin of safety to give additional protection for the public and to account for any variations in measurements.

Body-worn Operation

This device was tested for typical body-worn operations. To comply with RF exposure requirements, a minimum separation distance of 10mm must be maintained between the user's body and the handset, including the antenna. Third-party belt-clips, holsters, and similar accessories used by this device should not contain any metallic components. Body-worn accessories that do not meet these requirements may not comply with RF exposure requirements and should be avoided. Use only the supplied or an approved antenna.

IC STATEMENT

This device complies with Industry Canada licence-exempt RSS standard(s)

Operation is subject to the following two conditions:

- (1) This device may not cause interference, and
- (2) This device must accept any interference, including interference that may cause undesired operation of the device.

This equipment complies with IC radiation exposure limits set forth for an uncontrolled environment. End user must follow the specific operating instructions for satisfying RF exposure compliance. This transmitter must not be co-located or operating in conjunction with any other antenna or transmitter.

These requirements set a SAR limit of 1.6 W/kg averaged over one gram of tissue.

The highest SAR value for this model phone when tested for use at the ear is 0.745W/Kg and when worn on the body is 0.666 W/Kg. The maximum scaled SAR in hotspot mode is 0.666W/Kg. This device was tested for typical body-worn operations. To comply with RF exposure requirements, a minimum separation distance of 10mm must be maintained between the

user's body and the handset, including the antenna. Third-party belt-clips, holsters, and similar accessories used by this device should not contain any metallic components. Body-worn accessories that do not meet these requirements may not comply with RF exposure requirements and should be avoided. Use only the supplied or an approved antenna.

Le présent appareil est conforme aux CNR d'Industrie Canada applicables aux appareils radio exempts de licence.

Ce dispositif est conforme aux normes autoriser-exemptes du Canada RSS d'industrie

L'exploitation est autorisée aux deux conditions suivantes :

- (1) l'appareil ne doit pas produire de brouillage, et
 - (2) l'utilisateur de l'appareil doit accepter tout brouillage radioélectrique subi, même si le brouillage est susceptible d'en compromettre le fonctionnement. Cet équipement est conforme avec l'exposition aux radiations IC définies pour un environnement non contrôlé. L'utilisateur final doit respecter les instructions de fonctionnement spécifiques pour satisfaire la conformité aux expositions RF. Cet émetteur ne doit pas être co-localisées ou opérant en conjonction avec une autre antenne ou transmetteur. Ces exigences définissent la valeur SAR limite à 1.6 W / kg en moyenne par gramme de tissu. La valeur SAR la plus élevée pour ce modèle de téléphone testé à l'oreille est 0.745W/Kg et lorsque porté sur le corps est 0.666W/Kg. l'échelle maximale sar en mode hotspot est de 0.666 W kg
- Cet appareil a été testé pour des opérations portés sur le corps typiques. Pour se conformer aux exigences d'exposition aux radiofréquences, une distance minimale de 15 mm doit être maintenue entre le corps de l'utilisateur et le combiné, y compris l'antenne. Les pinces de ceinture, les étuis et autres accessoires similaires utilisés par cet appareil ne doivent pas contenir de composants métalliques. Les accessoires portatifs qui ne répondent pas à ces exigences peuvent ne pas se conformer aux exigences d'exposition RF et doit être évitée. Utilisez uniquement l'antenne fournie ou une antenne approuvée

E-label will used

Regulatory Certification: If you need to view your device's certification number, follow these steps:

Settings>About Phone >Regulatory label.