

**A900HA86A7**

**User Guide**

## Contents

I. CAUTIONS ON MOBILE PHONE USE .....	4
1.1 INTERFERENCE .....	4
1.2 REASONABLE USE .....	4
1.3 QUALIFIED MAINTENANCE SERVICE .....	4
1.4 WATER-RESISTANCE .....	4
1.5 EMERGENCY CALLS .....	4
2 PRECAUTIONS FOR USE OF BATTERY .....	4
3 CAUTIONS FOR CHILDREN .....	5
II. KEYS AND PARTS .....	6
III. START TO USE .....	7
3.1 To INSERT SIM CARD(S): .....	7
3.2 CHARGE THE BATTERY .....	9
IV. BASIC FUNCTIONS .....	9
1. LOCK AND UNLOCK THE SCREEN .....	9
2. MAKE IT YOURS .....	11
3. SWITCH TO RECENTLY USED APPLICATION .....	17
4. MAKE A CALL .....	18
5. CALL LOG .....	19

<b>6. ANSWERING PHONE CALLS AND REJECTION .....</b>	<b>20</b>
<b>7. ADD A CONTACT .....</b>	<b>21</b>
<b>8. SEND AND RECEIVE MESSAGE(S) .....</b>	<b>22</b>
<b>9. BROWSER THE WEB .....</b>	<b>24</b>
<b>10. ENJOY MUSIC .....</b>	<b>24</b>
<b>11. DOWNLOAD APPLICATIONS FROM PLAY STORE .....</b>	<b>25</b>
<b>12. MANAGE APPLICATIONS .....</b>	<b>26</b>
<b>13. APPLICATIONS &amp; UTILITIES .....</b>	<b>27</b>
<b>14. SETTINGS .....</b>	<b>27</b>
<b>V. TECHNICAL INFORMATION .....</b>	<b>32</b>

## **I. Cautions on mobile phone use**

### **1.1 Interference**

All phones may be interfered, which affect phone calls.

### **1.2 Reasonable use**

Use only in the normal position. Do not touch the antenna area unnecessarily.

### **1.3 Qualified maintenance service**

Only qualified personnel may install or repair this product.

### **1.4 Water-resistance**

Your device is non water-resistant. Keep it dry.

### **1.5 Emergency calls**

Ensure the phone is switched on and in service. Enter the emergency number and press the Dialer icon.

## **2 Precautions for use of battery**

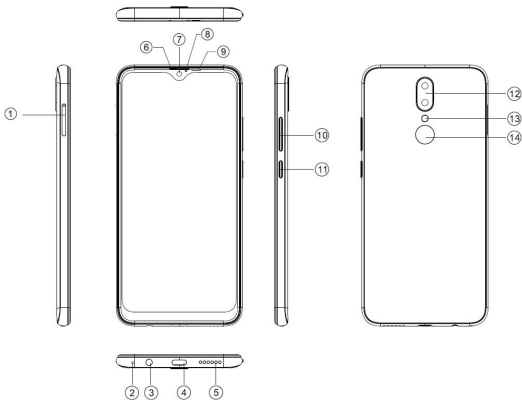
**2.1** Do not dispose of batteries near or in a fire to avoid dangers.

**2.2** Do not dispose of batteries in the garbage. Dispose of batteries to assigned battery recycling center.

### **3 Cautions for children**

Keep your device out the reach of children in case of accidental injury caused by incorrect use of the device as toys.

## II. Keys and parts



- 1. Audio jack
- 2. USB Connector
- 3. Front Camera
- 4. Receiver
- 5. Light sensor / Proximity sensor
- 6. LCD
- 7. Mic
- 8. Adjust volume key
- 9. Power key
- 10. Rear Camera
- 11. Flashlight
- 12. Speaker

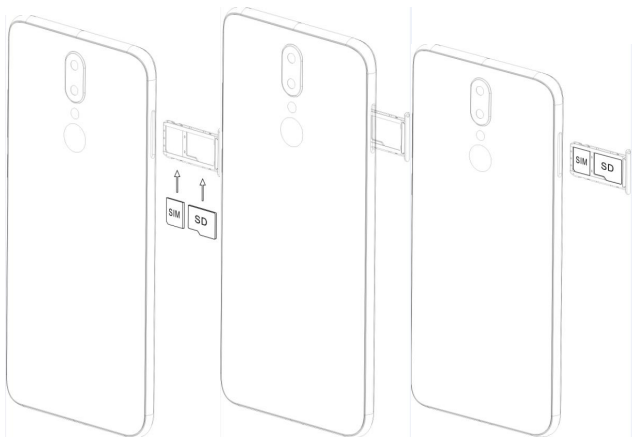
### **III. Start to use**

#### **3.1 To insert SIM card(S):**

Insert the SIM card correctly in the card slot(s) (See figure below), suggest switch off the phone when you insert SIM card.

Insert the Micro SD card into the slot with the correct direction (See figure below), suggest switch off the phone when you insert SIM card.

Note: Use only compatible memory cards with this device. Incompatible memory cards may damage the card or the device and corrupt the data stored in the card.





### **3.2 Charge the battery**

During charging, the battery indicator on the phone is a thunder icon. If the device is switched off during charging, there will still be a charging indication on the screen that shows the phone is being charged. If the device is overused when the battery is low, the charging icon might take some time to appear.

When the battery indicator on the screen display 'Battery is full', thunder icon will disappear, which means the completion of charging. If the phone is switched off during charging, the screen will display ' Battery is full '. It generally takes 4 hours to charge the battery. During charging, the battery, the device and the charger will get hot. This is normal.

Unplug the charger from the AC electrical outlet and disconnect the wiring between the phone and the charger after charging. .

**Cautions:** Charge the phone in a well ventilated place in which the temperature is between -10°C to +55°C . Use the charger provided by the manufacturer only. The use of unconfirmed charger may lead to dangers and violate the manufacturer's warranty clause. If the temperature is too high or too low during charging, the device will automatically send a warning and stop charging to avoid damage to the battery or any danger.

## **IV. Basic functions**

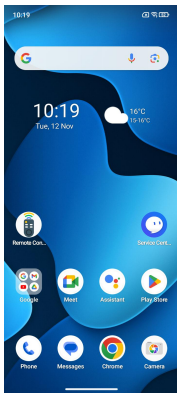
### **1. Lock and unlock the screen**

Press power button to enter Sleep mode and meanwhile the screen will be locked; press power button again to wake up and then swipe up for unlock.

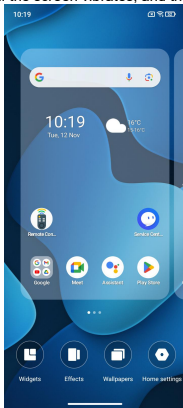


## 2. Make it yours

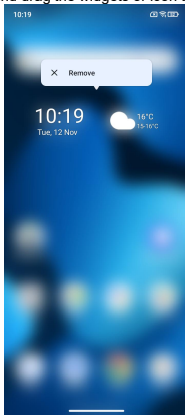
2.1 Home screen: It is your starting point to access all the features on your phone. It displays application icons, widgets, shortcuts, and other features. Long press home screen and Modify Wallpaper.



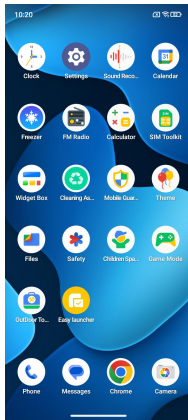
2.2 Long press **Home** screen, and then you can Modify Wallpaper; or enter Launcher and long press and hold an application till the screen vibrates, and then loosen your hold finger.



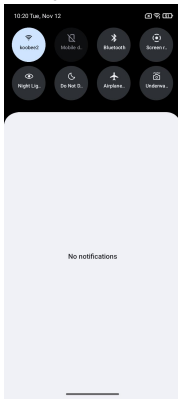
Long press and hold the widget or icon you want to move. Once the phone vibrates, don't loosen your hold on the icon. Drag the widget or icon to a new location on the screen. Press and hold on an icon till the phone vibrates, and drag the widgets or icon to the trash for remove!



Swipe left and enter to applaction list.

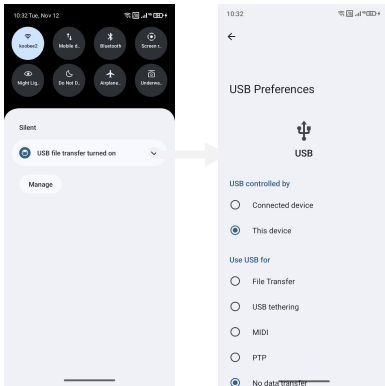


**2.3 Notification Bar:** At the top of the screen, the Status Bar displays the time, status, and notifications. If there is a new message, missed call or something in the notification bar, you can drag it down to open notification panel and click the desired one to have a view. When you finished, you can close it by dragging the panel up or pressing “Back”.



## 2.4 Android™ and computer connection

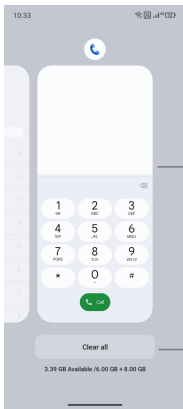
If you connect your phone to PC via USB, you can find the USB options, choose This Device file Transfer option, you can see your phone memory in PC, this is same function like USB storage.





### 3. Switch to Recently Used Application


Press menu key.

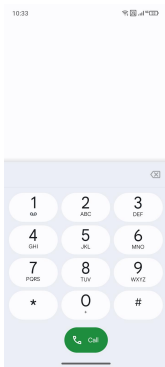


Touch and slide this place can choose to open the history application

Touch this icon to close all history application

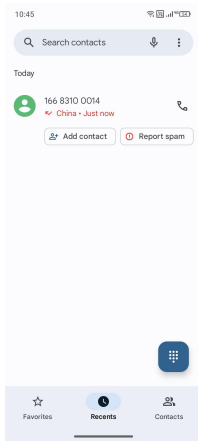
#### 4. Make a call

Click  and enter a complete phone number to make a call. Your phone supports smart search.



Swipe to right to view Call history and Contacts.

## 5. Call log

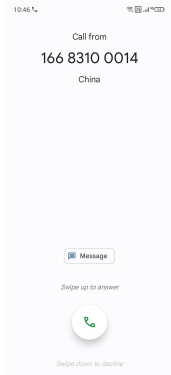


Press the number if you want to see the details , send message or call back, there are three options for you.

Press the number, you can view the contact details, send a message or call back.


## 6. Answering phone calls and rejection

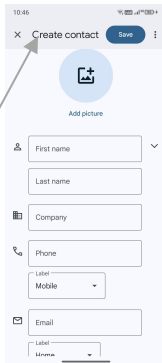
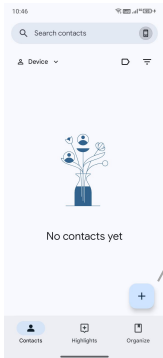
When there is an incoming call, you can drag the icon up or down to answer or hang up it directly.



## 7. Add a contact

Touch  to enter contact

Touch  to add a new contact

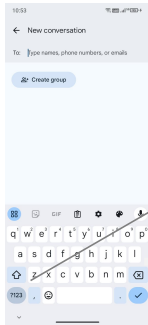


Click here to add new contact and in this page press menu key to enter menu view, setting, etc.

## 8. Send and Receive message(s)



Touch enter to messaging, touch “Start chat”.



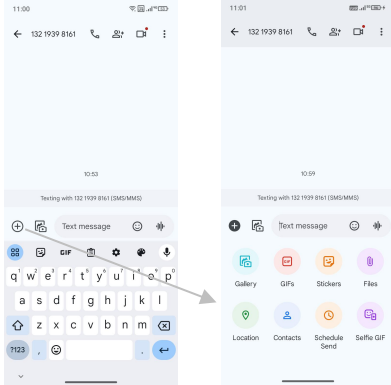
Tap this icon to select desired contact from phone book.

Touch to switch the digital input and symbols

Press space or a punctuation mark to enter the highlighted suggestion

When you are composing a new text message, you can select text for cutting or copying. The selected text is highlighted in blue

Tap  to add “Attach” including Pictures, Videos, Audios, etc to send MMS/SMS



When a new message comes, you can read by dragging notification panel and click the message, or entering Message to read it directly.

Long press one of the all message threads, you can delete it”.

## 9. Browser the Web

### 9.1 Set up Internet/Data connection

Enter Settings > More..., scroll down to find out Mobile network, and then enter "Access Points Names, choose the desired WAP account.

### 9.2 Switch on Data connection or Wi-Fi

To browse the web, you need to switch on Data connection. If there is Wi-Fi around, you can switch on Wi-Fi to use it browse the web.

## 10. Enjoy music

When you copy music to your SD card, the Music player searches the card for music files and builds a catalog of your music, based on information about each file that is stored in the file itself.

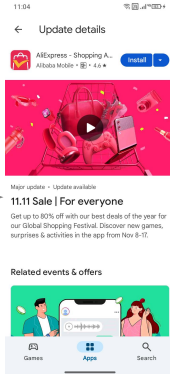
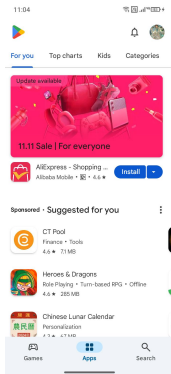




## 11. Download applications from Play Store

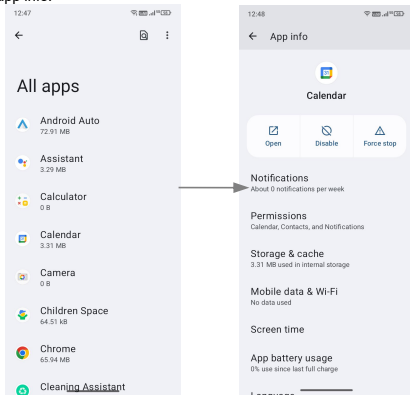
### 11.1 Add Google™ account

### 11.2 Enter play store and download apps



## 12. Manage Applications

Enter Setting > App.  
You can see app info.



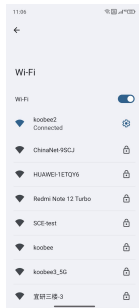
## 13. APPLICATIONS & UTILITIES

For your entertainment purpose, your device is provided with several interesting games, applications and utilities, such as Gmail, Email, Play Store. Before accessing the applications, please turn on the data connection or connect to wifi.

## 14. Settings

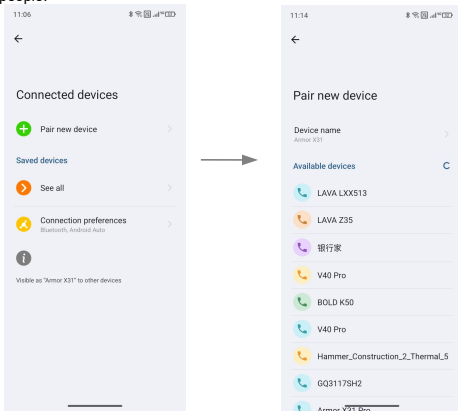
### 14.1 Wi-Fi

Open Wi-Fi, search nearby Wi-Fi and connect it, then you can use Internet or download apps for free.



## 14.2 Bluetooth

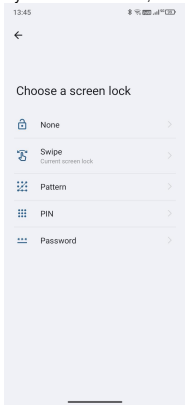
Open Bluetooth, connect to other phone, you can share something like music, photos, movies etc to other people.



### 14.3 Security

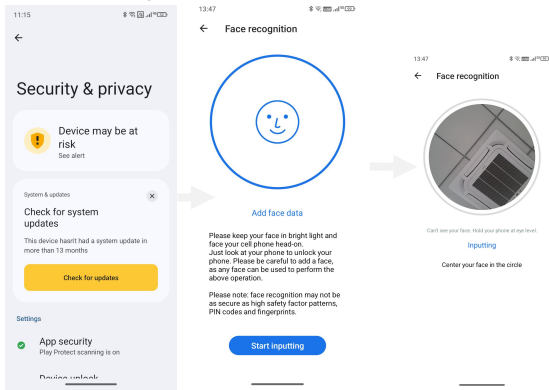
Screen lock.

There are four screen lock ways for you to choose :Slide, Pattern, PIN, Password.



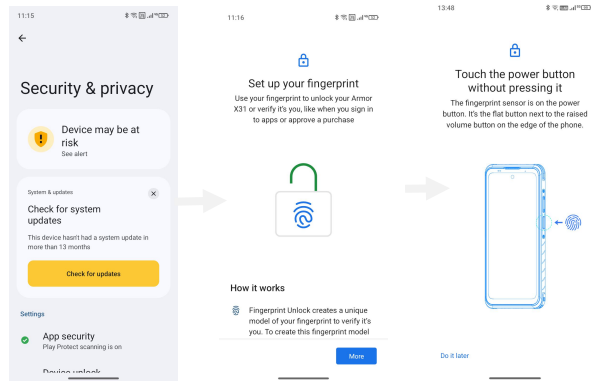
## 14.4 Face ID

Click Settings - Security&privacy - Device Unlock - Face&Fingerprint Unlock - Face Unlock, follow the prompts ,after completing the face recording, you can use the face unlock function.



## 14.5 Fingerprint

Click Settings - Security&privacy - Device Unlock - Face&Fingerprint Unlock - Fingerprint Unlock Unlock, follow the prompts ,after completing the fingerprint recording, you can use the fingerprint unlock function



## **V. Technical Information**

Model: STG A2 Pro

Size Length: 146.8\*71.3\*8.5mm

Battery: 3950mAh

Networks: 2G: GSM B2/3/5/8

3G: WCDMA B1/2/5/8

4G: FDD B1/3/5/7/8/20      TDD B38/39/40/41

SAR Value: Head SAR value:

GSM: 850/EGSM900/DCS1800/PCS1900

Weight: 160g

Nominal voltage: 3.8V

Max. Voltage: 4.35V

Capacity rating: 2200 mAh (8.36Wh)

Google, Google Play, Google Pay, YouTube and other marks are trademarks of Google LLC.



## RF Specification:

Function	Operation Frequency	Max RF output power:
BLE	2402MHz~2480MHz	-2.68 dBm
BT(BR+EDR)	2402MHz~2480MHz	4.38 dBm
WIFI 802.11b/g/n(HT20/40)	802.11b/g/n(20MHz): 2412~2472MHz; 802.11n(40MHz):2422~2462MHz	17.05 dBm
Wi-Fi 5.2G(802.11a/n20/n40/ac20/ac40/ac80)	802.11a/ n20/ac20:5180MHz~5240MHz 802.11 n40/ac40:5190MHz~5230MHz 802.11 ac80:5210MHz	11.65 dBm
Wi-Fi 5.8G(802.11a/n20/n40/ac20/ac40/ac80)	802.11a/ n20/ac20:5745MHz~5825MHz 802.11 n40/ac40:5755MHz~5795MHz 802.11 ac80:57750MHz	12.11 dBm
GSM/GPRS/EGPRS 900	TX(Uplink):880M-915MHz; RX(Downlink):925M-960MHz	32.68 dBm
GSM/GPRS/EGPRS 1800	TX(Uplink):1710M-1785MHz; RX(Downlink):1805M-1880MHz	30.36 dBm
WCDMA B1	TX(Uplink):1920-1980MHz; RX(Downlink):2110-2170MHz	23.66 dBm
WCDMA B8	TX(Uplink): 880-915MHz; RX(Downlink):925-960MHz	23.72 dBm
LTE FDD B1	TX(Uplink):1920-1980MHz; RX(Downlink):2110-2170MHz	24.23 dBm
LTE FDD B3	TX(Uplink) :1710-1785MHz; RX(Downlink):1805-1880MHz	24.21 dBm
LTE FDD B7	TX(Uplink) :2500-2570MHz; RX(Downlink):2620-2690MHz	24.19 dBm
LTE FDD B8	TX(Uplink): 880MHz to 915 MHz RX(Downlink): 925 MHz to 960 MHz	24.00 dBm
LTE FDD B20	TX(Uplink): 832MHz~862MHz; RX(Downlink):791MHz~821MHz	24.03 dBm
LTE FDD B28	TX(Uplink): 703 MHz to 733MHz RX(Downlink): 758 MHz to 788 MHz	23.94 dBm
LTE TDD B40	Uplink & Downlink: 2300 MHz to 2400 MHz	24.52 dBm
NFC	13.56MHz	12.61/m@10m
FM	Rx(Downlink): 87.5MHz~108MHz	--
GPS	Rx(Downlink): 1.57542GHz	--

**Warning:**


1. Use carefully with the earphone; maybe possible excessive sound pressure from earphones and headphones can cause hearing loss.
2. **CAUTION: RISK OF EXPLOSION IF BATTERY IS REPLACED BY AN INCORRECT TYPE. DISPOSE OF USED BATTERIES ACCORDING TO THE INSTRUCTIONS.**
3. The product shall only be connected to a USB interface of version USB2.0.
4. Adapter shall be installed near the equipment and shall be easily accessible.
5. Operation temperature: -10~40°C.
6. The plug considered as disconnect device of adapter.
7. SAR: The device complies with RF specifications when the device is used at 0.5cm from your body (SAR limit 2.0 W/Kg for 10-g). Member DAS Separation distance of 0mm (SAR limit 4.0 W/Kg for 10-g). The device is in compliance with the requirements.



**Restrictions in the 5 GHz band:**

According to Article 10 (10) of Directive 2014/53/EU, the packaging shows that this radio equipment will be subject to some restrictions when placed on the market in Belgium (BE), Bulgaria (BG), the Czech Republic (CZ), Denmark (DK), Germany (DE), Estonia (EE), Ireland (IE), Greece (EL), Spain (ES), France (FR), Croatia (HR), Italy (IT), Cyprus (CY), Latvia (LV), Lithuania (LT), Luxembourg (LU), Hungary (HU), Malta (MT), Netherlands (NL), Austria (AT), Poland (PL), Portugal (PT), Romania (RO), Slovenia (SI), Slovakia (SK), Finland (FI), Sweden (SE), Turkey (TR), Norway (NO), Switzerland (CH), Iceland (IS), and Liechtenstein (LI).

The WLAN function for this device is restricted to indoor use only when operating in the 5150 to 5350 MHz frequency range.

	ES	LU	RO	CZ	FR	HU	SI
	DK	HR	BE	BG	DE	EE	IE
	EL	IT	Cy	LV	LT	SK	MT
	NL	AT	PL	PT	FI	SE	TR
	NO	CH	IS	LI			

**FCC Caution:** Any changes or modifications not expressly approved by the party responsible for compliance could void the user's authority to operate this equipment.

This device complies with Part 15 of the FCC Rules. Operation is subject to the following two conditions:

- (1) This device may not cause harmful interference, and
- (2) this device must accept any interference received, including interference that may cause undesired operation.

This Product meets the government's requirements for exposure to radio waves. The guidelines are based on standards that were developed by independent scientific organizations through periodic and thorough evaluation of scientific studies. The standards include a substantial safety margin designed to assure the safety of all persons regardless of age or health.

FCC RF Exposure Information and Statement the SAR limit of USA (FCC)

is 1.6 W/kg averaged over one gram of this has been tested against this SAR limit. SAR information on this can be viewed on-line at <http://www.fcc.gov/oet/ea/fccid/>. Please use the device FCC ID number for search. The device has been evaluated to meet general RF exposure requirements. The device can be used in portable exposure conditions without restriction.

**NOTE:**

This equipment has been tested and found to comply with the limits for a Class B digital device, pursuant to Part 15 of the FCC Rules.

These limits are

designed to provide reasonable protection against harmful interference in a residential installation. This equipment generates, uses and can radiate radio frequency energy and, if not installed and used in accordance with the instructions, may cause harmful interference to radio communications.

However, there is no guarantee that interference will not occur in a particular installation.

If this equipment does cause harmful interference to radio or television reception, which can be determined by turning the equipment off and on, the user is encouraged to try to correct the interference by one or more of the following measures:

- Reorient or relocate the receiving antenna.
- Increase the separation between the equipment and receiver.
- Connect the equipment into an outlet on a circuit different from that to which the receiver is connected.
- Consult the dealer or an experienced radio/TV technician for help.

#### Canadian regulatory statement

This device complies with Innovation, Science, and Economic Development Canada licence-exempt RSS standard(s). Operation is subject to the following two conditions:

- (1) this device may not cause interference, and
- (2) this device must accept any interference, including interference that may cause undesired operation of the device.

Le présent appareil est conforme aux CNR d'Innovation, Sciences et Développement économique Canada applicables aux appareils radio exempts de licence. L'exploitation est autorisée aux deux conditions suivantes :

- (1) l'appareil ne doit pas produire de brouillage, et
- (2) l'utilisateur de l'appareil doit accepter tout brouillage radioélectrique subi, même si le brouillage est susceptible d'en compromettre le fonctionnement.

**SAR Statement:** This product meets the government's requirements for exposure to radio waves. The guidelines are based on standards that were developed by independent scientific organizations through periodic and thorough evaluation of scientific studies. The standards include a substantial safety margin designed to assure the safety of all persons regardless of age or health. IC RF Exposure Information and Statement the SAR limit of Canada (IC) is 1.6 W/kg averaged over one gram of tissue. has also been tested against this SAR limit. This device was tested for typical body-worn operations with the back of the handset kept 10mm from the body. To maintain compliance with FCC RF exposure requirements, use accessories that maintain a 10mm separation distance between the user's body and the back of the handset. The use of belt clips, holsters and similar accessories should not contain metallic components in its assembly. The use of accessories that do not satisfy these requirements may not comply with FCC RF exposure requirements, and should be avoided. **Body-worn Operation** This device was tested for typical body-worn operations. To comply with RF exposure requirements, a minimum separation distance of 10mm must be maintained between the user's body and the handset, including the antenna. Third-party belt- clips, holsters, and similar accessories used by this device should not contain any metallic components. Body-worn accessories that do not meet these requirements may not comply with RF exposure requirements and should be avoided. Use only the supplied or an approved antenna.