

UserGuide

GQ5008

Contents

I. CAUTIONSONMOBILEPHONEUSE	4
1.1 INTERFERENCE.....	4
1.2 REASONABLEUSE.....	4
1.3 QUALIFIEDMAINTENANCESERVICE	4
1.4 WATER-RESISTANCE.....	4
1.5 EMERGENCYCALLS	4
2 PRECAUTIONSFORUSEOFBATTERY	4
3 CAUTIONSFORCHILDREN	5
II. KEYSANDPARTS	6
III. STARTTOUSE.....	7
3.1 TOINSERTSIMCARD(S).....	7
3.2 CHARGETHEBATTERY	9
IV. BASICFUNCTIONS	9
1. LOCKANDUNLOCKTHESCREEN	9
2. MAKEITYOURS.....	11
3. SWITCHTORECENTLYUSEDAPPLICATION.....	17
4. MAKEACALL.....	18
5. CALLLOG	19

6. ANSWERINGPHONECALLSANDREJECTION.....	20
7. ADDACONTACT.....	21
8. SENDANDRECEIVEMESSAGE(S).....	22
9. BROWSETHEWEB.....	24
10. ENJOYMUSIC.....	24
11. DOWNLOADAPPLICATIONSFROMPLAY STORE.....	25
12. MANAGEAPPLICATIONS.....	26
13. APPLICATIONS&UTILITIES.....	27
14. SETTINGS.....	27
V. TECHNICALINFORMATION.....	32

I. Caution on mobile phone use

1.1 Interference

All phones may be interfered, which affects phone calls.

1.2 Reasonable use

Use only in the normal position. Do not touch the antenna area unnecessarily.

1.3 Qualified maintenance service

Only qualified personnel may install or repair this product.

1.4 Water-resistance

Your device is not water-resistant. Keep it dry.

1.5 Emergency calls

Ensure the phone is switched on and in service. Enter the emergency number and press the Dialer icon.

2 Precautions for use of battery

2.1 Do not dispose of batteries near or in a fire to avoid dangers.

2.2 Do not dispose of batteries in the garbage. Dispose of batteries to assigned battery recycling center.

3 Cautionsforchildren

Keepyour deviceoutthereachofchildren
incaseofaccidental injurycausedbyincorrectuseofthedeviceastoys.

- ☐ **1.Audiojack**
- ☐ **2.USBConnector**
- ☐ **3.Front Camera**
- ☐ **4.Receiver**
- ☐ **5.Light sensor/Proximity sensor**
- ☐ **6.LCD**
- ☐ **7.Mic**
- ☐ **8.Adjust volume key**
- ☐ **9.Powerkey**
- ☐ **10.Rear Camera**
- ☐ **11.Flashlight**
- ☐ **12.Speaker**

III. Start to use

3.1 To insert SIM card(S):

Insert the SIM card correctly in the card slot(s) (See figure below), suggest switch off the phone when you insert SIM card.

Insert the Micro SD card into the slot with the correct direction (See figure below), suggest switch off the phone when you insert SIM card.

Note: Use only compatible memory cards with this device. Incompatible memory cards may damage the card or the device and corrupt the data stored in the card.

3.2 Charge the battery

During charging, the battery indicator on the phone is a thunder icon. If the device is switched off during charging, there will still be a charging indication on the screen that shows the phone is being charged. If the device is overused when the battery is low, the charging icon might take some time to appear. When the battery indicator on the screen displays 'Battery is full', the thunder icon will disappear, which means the completion of charging. If the phone is switched off during charging, the screen will display 'Battery is full'. It generally takes 4 hours to charge the battery. During charging, the battery, the device and the charger will get hot. This is normal.

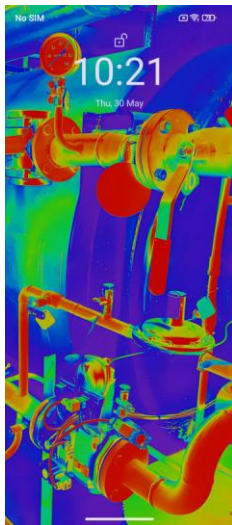
Unplug the charger from the AC electrical outlet and disconnect the wiring between the phone and the charger after charging..

Cautions: Charge the phone in a well ventilated place in which the temperature is between -10°C to +55°C. Use the charger provided by the manufacturer only. The use of an unconfirmed charger may lead to dangers and violate the manufacturer's warranty clause. If the temperature is too high or too low during charging, the device will automatically send a warning and stop charging to avoid damage to the battery or any danger.

IV. Basic functions

1. Lock and unlock the screen

Press power button to enter Sleep mode and meanwhile the screen will be locked; press power button again to wake up and then swipe up for unlock.



2. Make it yours

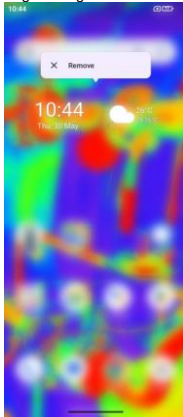
2.1 Homescreen: It is your starting point to access all the features on your phone. It displays application icons, widgets, shortcuts, and other features. Long press homescreen and Modify Wallpaper.



2.2 Longpress**Homescreen**,andthenyoucanModify Wallpaper;orenterLauncherandlong pressandhold anapplicationtillthescreenvibrates,andthen loosenyour holdfinger.



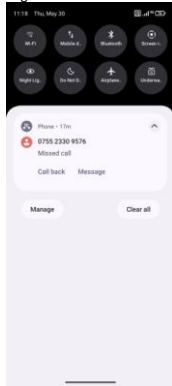
Long press and hold the widget or icon you want to move. Once the phone vibrates, don't loosen your hold on the icon. Drag the widget or icon to a new location on the screen. Press and hold on an icon until the phone vibrates, and drag the widget or icon to the trash for removal!



Swipe left and enter to application list

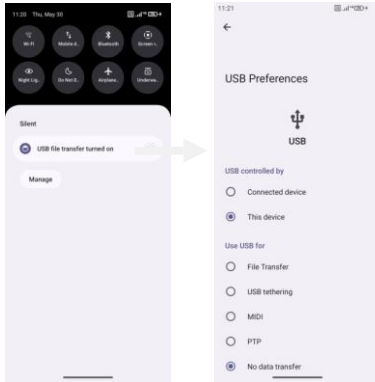


2.3 NotificationBar: At the top of the screen, the Status Bar displays the time, status, and notifications. If there is a new message, missed call or something in the notification bar, you can drag it down to open the notification panel and click the desired one to have a view. When you finished, you can close it by dragging the panel up or pressing "Back".



2.4 Android™ and computer connection

If you connect your phone to PC via USB, you can find the USB Options, choose This Device - file Transfer option, you can see your phone memory in PC, this is same function like USB storage.



3. Switch to Recently Used Application

Press menu key.

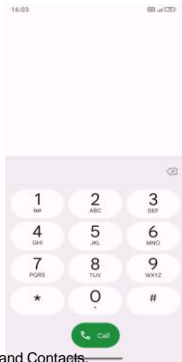


Touch and
slide this place can
be used to open the
history application

Touch this icon to
clear all history appli
cation

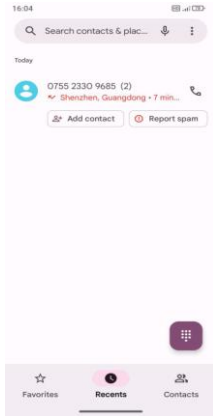
4. Makeacall

Click  and enter a complete phone number to make a call. Your phone supports smart search.



Swipe to right to view Call history and Contacts.

5. Call log



Press the number if you want to see the details, send message or call back, there are three options for you.

Press the number, you can view the contact details, send a message or callback.

6. Answering phone calls and rejection

When there is an incoming call, you can drag the icon up or down to answer or hang up it directly.



Call from
0755 8670 8666
Shenzhen, Guangdong



Swipe up to answer

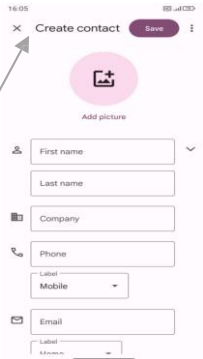
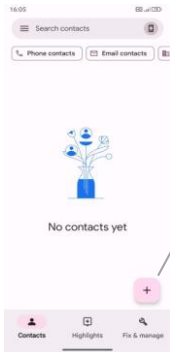


Swipe down to reject

7. Add a contact

Touch  to enter contact

Touch  to add a new contact



Click here to add new contact and in this page press menu key to enter menu view, setting, etc.

8. Send and Receive message(s)



Touch  enter to messaging, touch "Start chat".



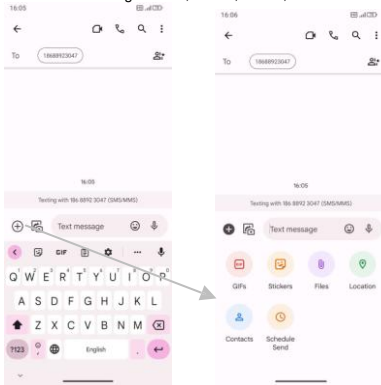
Tap this icon
to select desired contact from
phone

Touch to switch the digital input and
symbols

Press space or a punctuation mark to enter the highlighted
suggestion

When you are composing a new text message, you can select text for cutting or copying. The selected text is highlighted in blue

Tap  to add "Attach" including Pictures, Videos, Audios, etc. to send MMS. SMS



When a new message comes, you can read by dragging notification panel and click the message, or enter the message to read it directly.
 Long press one of the all message threads, you can delete it".

9. Browser theWeb

9.1 SetupInternet/Dataconnection

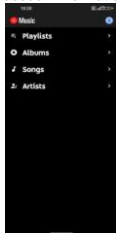
EnterSettings>More...,scroll downtofindoutMobilenetwork,andthenenter“AccessPoints Names,choosethedesiredWAPaccount.

9.2 SwitchonDataconnectionorWi-Fi

Tobrowsetheweb,youneedtoswitchonDataconnection.IfthereisWi-Fiaround,youcan switchonWi-Fiouseit browsetheweb.

10. Enjoymusic

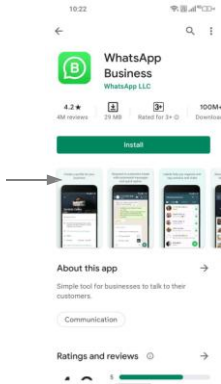
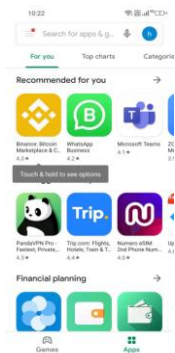
Whenyoucopy music toyour SD card,the Musicplayer searches thecardformusicfiles and buildsacatalogofyourmusic, basedon informationabouteachfilethat isstored in thefileitself.



11. Download applications from PlayStore

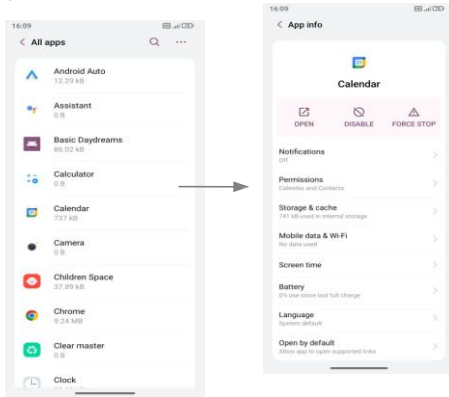
11.1 Add Google™ account

11.2 Enter playstore and download apps



12. ManageApplications

Enter Setting > App. You can see app info.



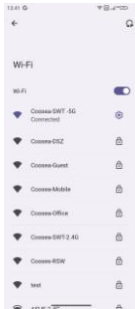
13. APPLICATIONS&UTILITIES

For your entertainment purpose, your device is provided with several interesting games, applications and utilities, such as Gmail, Email, Play Store. Before accessing the applications, please turn on the data connection or connect to wifi.

14. Settings

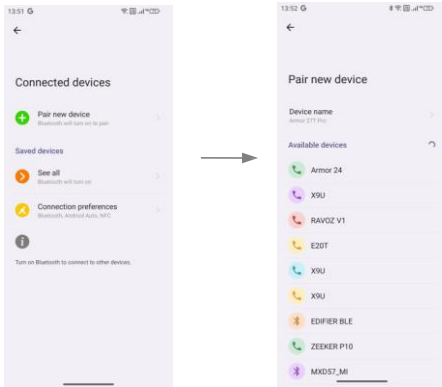
14.1 Wi-Fi

Open Wi-Fi, search nearby Wi-Fi and connect it, then you can use Internet or download apps for free.



14.2 Bluetooth

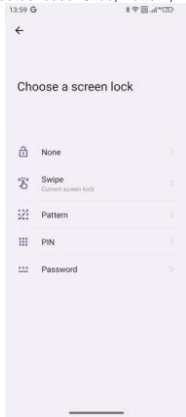
Open Bluetooth, connect to other phone, you can share something like music, photos, movies etc to other people.



14.3 Security

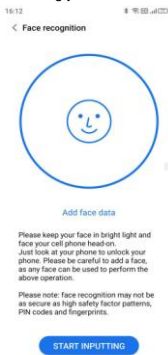
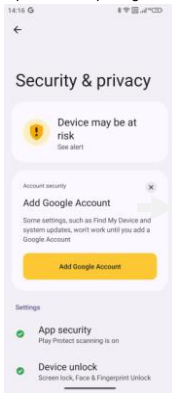
Screenlock.

There are four screen lock ways for you to choose: Slide, Pattern, PIN, Password.



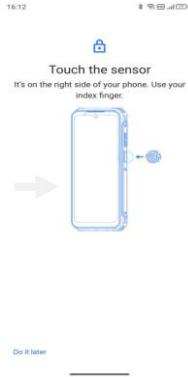
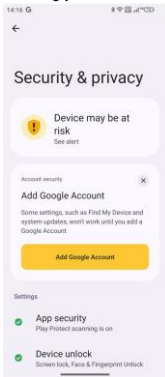
14.4 Face ID

Click Settings > Security & privacy > Device Unlock > Face & Fingerprint Unlock > Face Unlock, follow the prompts, after completing the face recording, you can use the face unlock function.



14.5 Fingerprint

Click Settings - Security & privacy - Device Unlock - Face & Fingerprint Unlock - Fingerprint Unlock, follow the prompts, after recording, you can use the fingerprint unlock function



RF Specification:

Function	Operation Frequency	Max RF output power:
BLE	2402MHz~2480MHz	4.95 dBm
BT(BR+EDR)	2402MHz~2480MHz	3.3 dBm
WIFI 802.11b/g/n/(HT20/40)	802.11b/g/n (20MHz): 2412~2472MHz; 802.11n (40MHz):2422~2462MHz	16.28 dBm
Wi-Fi 5.2G(802.11a/n20/n40/ac20/ac40/ac80)	802.11a/ n20/ac 20:5180MHz~5240MHz 802.11 n40/ac 40:5190MHz~5230MHz 802.11 ac 80:5210MHz	13.9 dBm
Wi-Fi 5.8G(802.11a/n20/n40/ac20/ac40/ac80)	802.11a/ n20/ac 20:5745MHz~5825MHz 802.11 n40/ac 40:5755MHz~5795MHz 802.11 ac 80:57750MHz	13.94 dBm
GSM/GPRS/EGPRS 900	TX(Uplink):880M-915MHz; RX(Downlink):925M-960MHz	33.48 dBm
GSM/GPRS/EGPRS 1800	TX(Uplink):1710M-1785MHz; RX(Downlink):1805M-1880MHz	29.43 dBm
WCDMA B1	TX(Uplink):1920-1980MHz; RX(Downlink):2110-2170MHz	22.56 dBm
WCDMA B8	TX(Uplink): 880-915MHz; RX(Downlink):925-960MHz	23.36 dBm
LTE FDD B1	TX(Uplink):1920-1980MHz; RX(Downlink):2110-2170MHz	23.67dBm
LTE FDD B3	TX(Uplink) :1710-1785MHz; RX(Downlink):1805-1880MHz	22.98 dBm
LTE FDD B7	TX(Uplink) :2500-2570MHz; RX(Downlink):2620-2690MHz	23.49 dBm
LTE FDD B8	TX(Uplink): 880MHz to 915 MHz RX(Downlink): 925 MHz to 960 MHz	24.42 dBm
LTE FDD B20	TX(Uplink): 832MHz~862MHz; RX(Downlink):791MHz~821MHz	23.73 dBm
LTE FDD B28	TX(Uplink): 703 MHz to 748MHz RX(Downlink): 758 MHz to 803 MHz	23.93 dBm
LTE TDD B40	Uplink & Downlink: 2300 MHz to 2400 MHz	23.67 dBm
NR FDD n1:	Uplink: 1920 MHz to 1980MHz Downlink: 2110 MHz to 2170 MHz	24.71 dBm
NR FDD n3:	Uplink: 1710 MHz to 1785 MHz Downlink: 1805 MHz to 1880 MHz	25.03 dBm
NR FDD n8:	Uplink: 880 MHz to 915 MHz Downlink: 925 MHz to 960 MHz	23.96 dBm
NR FDD n20:	Uplink: 832 MHz to 862 MHz Downlink: 791 MHz to 821 MHz	24.23 dBm
NR FDD n28:	Uplink: 703 MHz to 748 MHz Downlink: 758 MHz to 803 MHz	23.93 dBm
NR TDD n38:	Uplink & Downlink: 2570 MHz to 2620 MHz	24.83 dBm
NR TDD n77:	Uplink & Downlink: 3300 MHz to 4200 MHz	27.03 dBm
NR TDD n78	Uplink & Downlink: 3300 MHz to 3800 MHz	27.03 dBm
EN DC_1A_n78A	Band 1: TX(Uplink):1920-1980MHz; RX(Downlink):2110-2170MHz N78: Uplink & Downlink: 3300 MHz to 3800 MHz	26.87 dBm

NFC	13.56MHz	-4dBuA/m@10m
WPT RX	100-205KHz	--
FM RX	Rx(Downlink): 87.5MHz~108MHz	--
GPS RX	Rx(Downlink): 1.57542GHz	--

Warning:

1. Use careful with the earphone maybe possible excessive sound pressure from earphones and headphones can cause hearing loss.

2. CAUTION: RISK OF EXPLOSION IF BATTERY IS REPLACED BY AN INCORRECT TYPE. DISPOSE OF USED BATTERIES ACCORDING TO THE INSTRUCTIONS.

3. The product shall only be connected to a USB interface of version USB2.0.

4. Adapter shall be installed near the equipment and shall be easily accessible.

5. Operation temperature: -10~40°C.

6. The plug considered as disconnect device of adapter.

7. SAR: The device complies with RF specifications when the device used at 0.5cm from your body (SAR limit 2.0 W/Kg for 10-g). Member DAS Separation distance of 0mm (SAR limit 4.0 W/Kg for 10-g). The device is in compliance with the requirements.

Restrictions in the 5 GHz band:

According to Article 10 (10) of Directive 2014/53/EU, the packaging shows that this radio equipment will be subject to some restrictions when placed on the market in Belgium (BE), Bulgaria (BG), the Czech Republic (CZ), Denmark (DK), Germany (DE), Estonia (EE), Ireland (IE), Greece (EL), Spain (ES), France (FR), Croatia (HR), Italy (IT), Cyprus (CY), Latvia (LV), Lithuania (LT), Luxembourg (LU), Hungary (HU), Malta (MT), Netherlands (NL), Austria (AT), Poland (PL), Portugal (PT), Romania (RO), Slovenia (SI), Slovakia (SK), Finland (FI), Sweden (SE), Turkey (TR), Norway (NO), Switzerland (CH), Iceland (IS), and Liechtenstein (LI).

The WLAN function for this device is restricted to indoor use only when operating in the 5150 to 5350 MHz frequency range.



	ES	LU	RO	CZ	FR	HU	SI
	DK	HR	BE	BG	DE	EE	IE
	EL	IT	Cy	LV	LT	SK	MT
	NL	AT	PL	PT	FI	SE	TR
	NO	CH	IS	LI			

This device complies with part 15 of the FCC rules. Operation is subject to the following two conditions: (1) This device may not cause harmful interference, and (2) this device must accept any interference received, including interference that may cause undesired operation.

15.21 Information to the user.

Any changes or modifications not expressly approved by the party responsible for compliance could void the user's authority to operate the equipment. 15.105 Information for the user.

Note: This equipment has been tested and found to comply with the limits for a Class B digital device, pursuant to part 15 of the FCC rules. These limits are designed to provide reasonable protection against harmful interference in a residential installation. This equipment generates, uses and can radiate radio frequency energy and, if not installed and used in accordance with the instructions, may cause interference to radio communications. However, there is no guarantee that interference will not occur in a particular installation. If this equipment does cause harmful interference to radio or television reception, which can be determined by turning the equipment off and on, the user is encouraged to try to correct the interference by one or more of the following measures:

- Reorient or relocate the receiving antenna.
- Increase the separation between the equipment and receiver.
- Connecting the equipment to a socket on a circuit different from that to which the receiver is connected.
- Contact with the provider or a radio/TV technician for help.

Specific absorption rate (SAR):

This device meets the government's requirements for exposure to radio waves. The guidelines are based on standards developed by independent scientific organizations through periodic and thorough evaluation of scientific studies. The standards include a margin of safety designed to ensure the safety of all people regardless of their age or health.

The FCC Statement of Exposure to RF and the SAR limit for the United States (FCC) is 1.6 W/kg average for each gram of tissue. This device was tested for typical operations of use on the body, with the back of the device at 10mm from the body. To maintain compliance with FCC RF exposure requirements, use accessories that maintain a distance of 10mm between the user's body and the back of the device. The use of belt clips, covers and similar accessories must not contain metallic components in their assembly. The use of accessories that do not meet these requirements may not meet FCC RF exposure requirements and should be avoided.

Functioning in the body

This device was tested for typical operations of use in the body. To comply with RF exposure requirements, a minimum separation distance of 10mm must be maintained between the user's body and the telephone, including the antenna. Third-party accessories such as belt clips, covers and similar accessories used with this device should not contain metallic components, accessories that do not meet these RF exposure requirements and should be avoided from use on the body. Use only the supplied antenna or an approved antenna.