

N2TV6TC7

User Guide

Contents

I. CAUTIONS ON MOBILE PHONE USE.....	4
1.1 INTERFERENCE.....	4
1.2 REASONABLE USE.....	4
1.3 QUALIFIED MAINTENANCE SERVICE	4
1.4 WATER-RESISTANCE.....	4
1.5 EMERGENCY CALLS.....	4
2 PRECAUTIONS FOR USE OF BATTERY	4
3 CAUTIONS FOR CHILDREN.....	5
II. KEYS AND PARTS.....	6
III. START TO USE	7
3.1 To INSERT SIM CARD(S):	7
3.2 CHARGE THE BATTERY	9
IV. BASIC FUNCTIONS	9
1. LOCK AND UNLOCK THE SCREEN	9
2. MAKE IT YOURS	11
3. SWITCH TO RECENTLY USED APPLICATION	17
4. MAKE A CALL	18
5. CALL LOG.....	19

6. ANSWERING PHONE CALLS AND REJECTION	20
7. ADD A CONTACT	21
8. SEND AND RECEIVE MESSAGE(S)	22
9. BROWSER THE WEB.....	24
10. ENJOY MUSIC	24
11. DOWNLOAD APPLICATIONS FROM PLAY STORE	25
12. MANAGE APPLICATIONS	26
13. APPLICATIONS & UTILITIES	27
14. SETTINGS	27
V. TECHNICAL INFORMATION	32

I. Cautions on mobile phone use

1.1 Interference

All phones may be interfered, which affect phone calls.

1.2 Reasonable use

Use only in the normal position. Do not touch the antenna area unnecessarily.

1.3 Qualified maintenance service

Only qualified personnel may install or repair this product.

1.4 Water-resistance

Your device is non water-resistant. Keep it dry.

1.5 Emergency calls

Ensure the phone is switched on and in service. Enter the emergency number and press the Dialer icon.

2 Precautions for use of battery

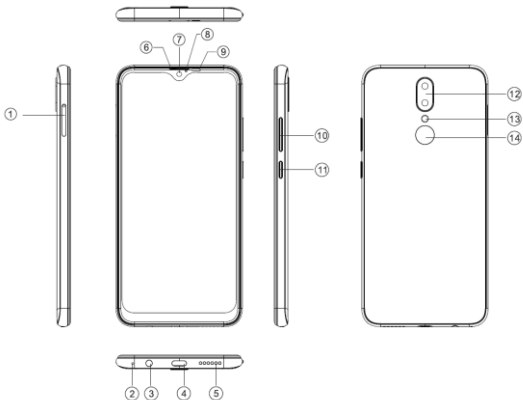
2.1 Do not dispose of batteries near or in a fire to avoid dangers.

2.2 Do not dispose of batteries in the garbage. Dispose of batteries to assigned battery recycling center.

3 Cautions for children

Keep your device out the reach of children in case of accidental injury caused by incorrect use of the device as toys.

II. Keys and parts



- 1. Audio jack
- 2. USB Connector
- 3. Front Camera
- 4. Receiver
- 5. Light sensor / Proximity sensor
- 6. LCD
- 7. Mic
- 8. Adjust volume key
- 9. Power key
- 10. Rear Camera
- 11. Flashlight
- 12. Speaker

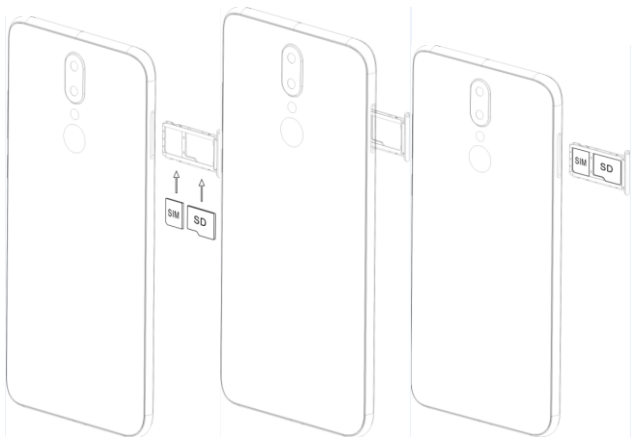
III. Start to use

3.1 To insert SIM card(S):

Insert the SIM card correctly in the card slot(s) (See figure below), suggest switch off the phone when you insert SIM card.

Insert the Micro SD card into the slot with the correct direction (See figure below), suggest switch off the phone when you insert SIM card.

Note: Use only compatible memory cards with this device. Incompatible memory cards may damage the card or the device and corrupt the data stored in the card.



3.2 Charge the battery

During charging, the battery indicator on the phone is a thunder icon. If the device is switched off during charging, there will still be a charging indication on the screen that shows the phone is being charged. If the device is overused when the battery is low, the charging icon might take some time to appear.

When the battery indicator on the screen display 'Battery is full', thunder icon will disappear, which means the completion of charging. If the phone is switched off during charging, the screen will display ' Battery is full '. It generally takes 4 hours to charge the battery. During charging, the battery, the device and the charger will get hot. This is normal.

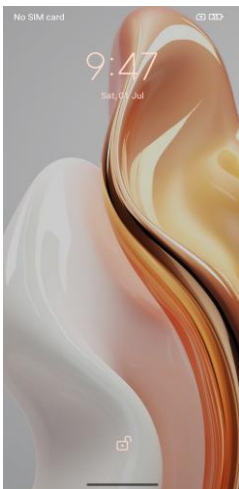
Unplug the charger from the AC electrical outlet and disconnect the wiring between the phone and the charger after charging. .

Cautions: Charge the phone in a well ventilated place in which the temperature is between -10°C to +55°C. Use the charger provided by the manufacturer only. The use of unconfirmed charger may lead to dangers and violate the manufacturer's warranty clause. If the temperature is too high or too low during charging, the device will automatically send a warning and stop charging to avoid damage to the battery or any danger.

IV. Basic functions

1. Lock and unlock the screen

Press power button to enter Sleep mode and meanwhile the screen will be locked; press power button again to wake up and then swipe up for unlock.

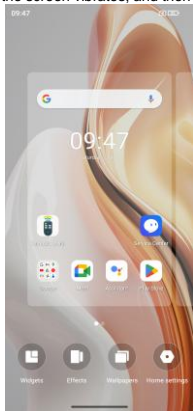


2. Make it yours

2.1 Home screen: It is your starting point to access all the features on your phone. It displays application icons, widgets, shortcuts, and other features. Long press home screen and Modify Wallpaper.



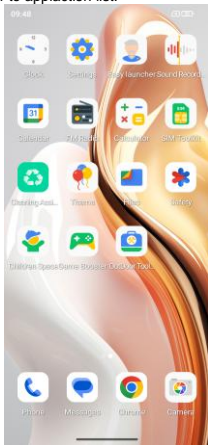
2.2 Long press **Home** screen, and then you can Modify Wallpaper; or enter Launcher and long press and hold an application till the screen vibrates, and then loosen your hold finger.



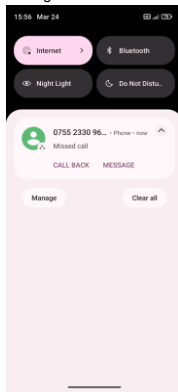
Long press and hold the widget or icon you want to move. Once the phone vibrates, don't loosen your hold on the icon. Drag the widget or icon to a new location on the screen Press and hold on an icon till the phone vibrates, and drag the widgets or icon to the trash for remove!



Swipe left and enter to appaction list.

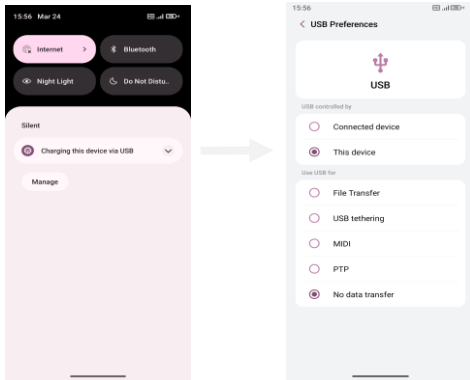


2.3 Notification Bar: At the top of the screen, the Status Bar displays the time, status, and notifications. If there is a new message, missed call or something in the notification bar, you can drag it down to open notification panel and click the desired one to have a view. When you finished, you can close it by dragging the panel up or pressing “Back”.



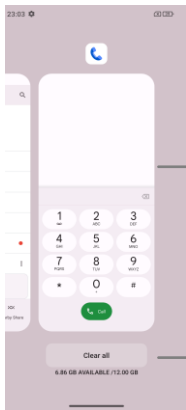
2.4 Android™ and computer connection

If you connect your phone to PC via USB, you can find the USB options, choose This Device file Transfer option, you can see your phone memory in PC, this is same function like USB storage.



3. Switch to Recently Used Application


Press menu key.

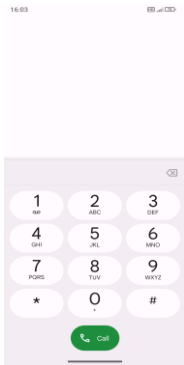


Touch and slide this place can choose to open the history application

Touch this icon to close all history application

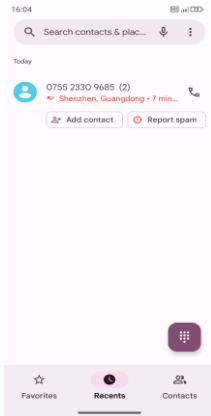
4. Make a call

Click  and enter a complete phone number to make a call. Your phone supports smart search.



Swipe to right to view Call history and Contacts.

5. Call log



Press the number if you want to see the details , send message or call back, there are three options for you.

Press the number, you can view the contact details, send a message or call back.

6. Answering phone calls and rejection

When there is an incoming call, you can drag the icon up or down to answer or hang up it directly.



Call from

0755 8670 8666

Shenzhen, Guangdong




Swipe up to answer

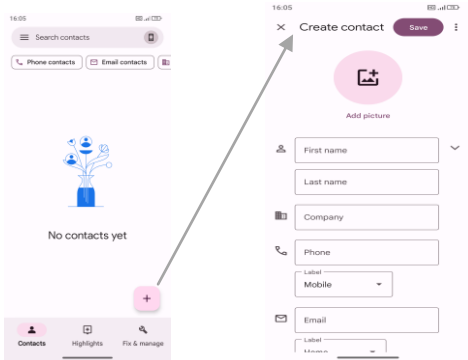


Swipe down to reject

7. Add a contact

Touch  to enter contact


Touch  to add a new contact



Click here to add new contact and in this page press menu key to enter menu view, setting, etc.

8. Send and Receive message(s)



Touch  enter to messaging, touch "What".



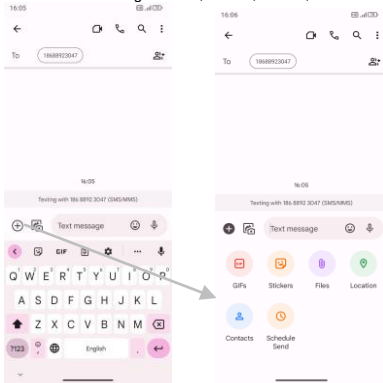
Tap this icon to select
desired contact from phone

Touch to switch the digital input and
symbols

Press space or a punctuation mark to enter the highlighted
suggestion

When you are composing a new text message, you can select text for cutting or copying. The selected text is highlighted in blue

Tap  to add "Attach" including Pictures, Videos, Audios, etc to send MMS.SMS



When a new message comes, you can read by dragging notification panel and click the message, or entering Message to read it directly.
Long press one of the all message threads, you can delete it".

9. Browser the Web

9.1 Set up Internet/Data connection

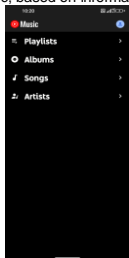
Enter Settings > More..., scroll down to find out Mobile network, and then enter "Access Points Names, choose the desired WAP account.

9.2 Switch on Data connection or Wi-Fi

To browse the web, you need to switch on Data connection. If there is Wi-Fi around, you can switch on Wi-Fi to use it browse the web.

10. Enjoy music

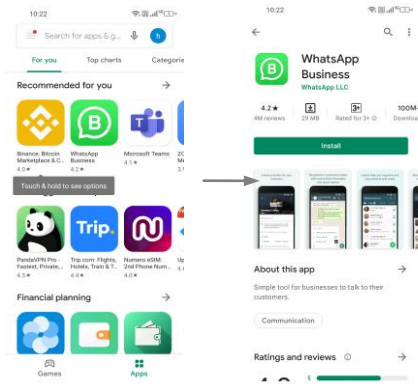
When you copy music to your SD card, the Music player searches the card for music files and builds a catalog of your music, based on information about each file that is stored in the file itself.



11. Download applications from Play Store

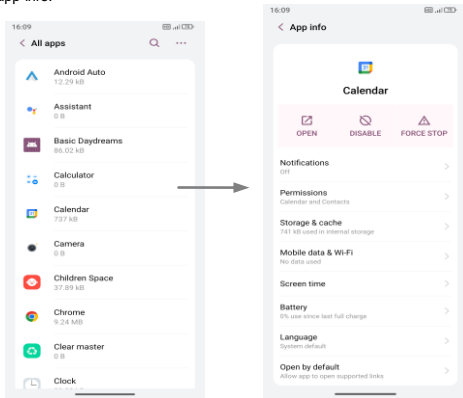
11.1 Add Google™ account

11.2 Enter play store and download apps



12. Manage Applications

Enter Setting > App.
You can see app info.



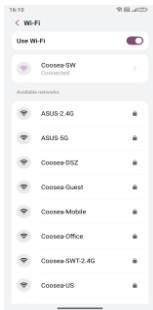
13. APPLICATIONS & UTILITIES

For your entertainment purpose, your device is provided with several interesting games, applications and utilities, such as Gmail, Email, Play Store. Before accessing the applications, please turn on the data connection or connect to wifi.

14. Settings

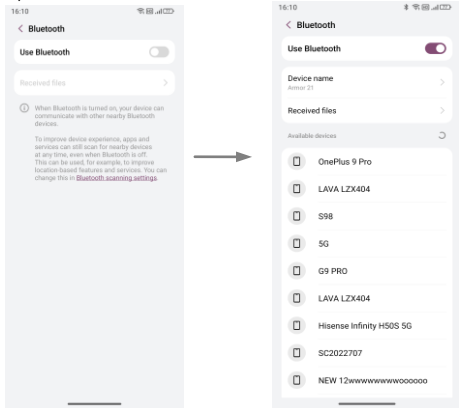
14.1 Wi-Fi

Open Wi-Fi, search nearby Wi-Fi and connect it, then you can use Internet or download apps for free.



14.2 Bluetooth

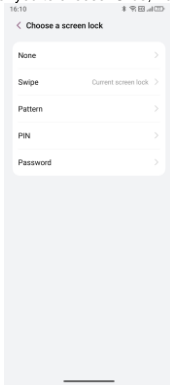
Open Bluetooth, connect to other phone, you can share something like music, photos, movies etc to other people.



14.3 Security

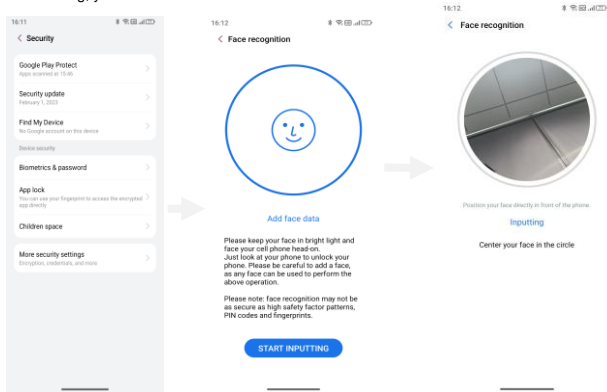
Screen lock.

There are four screen lock ways for you to choose :Slide, Pattern, PIN, Password.



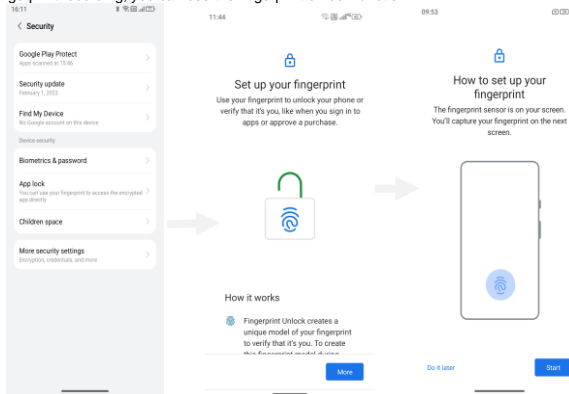
14.4 Face ID

Click Settings - Security and Location - Face Unlock, follow the prompts ,after completing the face recording, you can use the face unlock function.



14.5 Fingerprint

Click Settings - Security and Location - fingerprint, follow the prompts ,after completing the fingerprint recording, you can use the fingerprint unlock function.



V. Technical Information

Model: STG A2 Pro

Size Length: 146.8*71.3*8.5mm

Battery: 3950mAh

Networks: 2G: GSM B2/3/5/8

3G: WCDMA B1/2/5/8

4G: FDD B1/3/5/7/8/20 TDD B38/39/40/41

SAR Value: Head SAR value:

GSM: 850/EGSM900/DCS1800/PCS1900

Weight: 160g

Nominal voltage: 3.8V

Max. Voltage: 4.35V

Capacity rating: 2200 mAh (8.36Wh)

Google, Google Play, Google Pay, YouTube and other marks are trademarks of Google LLC.

FCC Caution:

Any changes or modifications not expressly approved by the party responsible for compliance could void the user's authority to operate this equipment.

This device complies with Part 15 of the FCC Rules. Operation is subject to the following two conditions:

- (1) This device may not cause harmful interference, and
- (2) this device must accept any interference received, including interference that may cause undesired operation.

This Product meets the government's requirements for exposure to radio waves. The guidelines are based on standards that were developed by independent scientific organizations through periodic and thorough evaluation of scientific studies. The standards include a substantial safety margin designed to assure the safety of all persons regardless of age or health.

FCC RF Exposure Information and Statement the SAR limit of USA (FCC) is 1.6 W/kg averaged over one gram of this Device GQ3119(FCC ID: 2AOWK-3119) has been tested against this SAR limit. SAR information on this can be viewed on-line at <http://www.fcc.gov/oet/ea/fccid/>. Please use the device FCC ID number for search. This device was tested for typical operations 10mm from the body. To maintain compliance with FCC RF exposure requirements, 10mm separation distance should be maintained to the user's bodies

NOTE:

This equipment has been tested and found to comply with the limits for a Class B digital device, pursuant to Part 15 of the FCC Rules. These limits are designed to provide reasonable protection against harmful interference in a residential installation. This equipment generates, uses and can radiate radiofrequency energy and, if not installed and used in accordance with the instructions, may cause harmful interference to radio communications.

However,

there is no guarantee that interference will not occur in a particular installation.

If this equipment does cause harmful interference to radio or television reception, which can be determined by turning the equipment off and on, the user is encouraged to try to correct the interference by one or more of the following measures:

- Reorient or relocate the receiving antenna.
- Increase the separation between the equipment and receiver.
- Connect the equipment into an outlet on a circuit different from that to which the receiver is connected.
- Consult the dealer or an experienced radio/TV technician for help.

IC Caution

EN

This device contains licence-exempt transmitter(s)/receiver(s) that comply with Innovation, Science and Economic Development Canada's licence-exempt RSS(s). Operation is object to the following two conditions:

1. This device may not cause interference.
2. This device must accept any interference, including interference that may cause undesired operation of the device.

FR

L'émetteur/récepteur exempt de licence contenu dans le présent appareil est conforme aux CNR d'Innovation, Sciences et Développement économique Canada applicables aux appareils radio exempts de licence. L'exploitation est autorisée aux deux conditions suivantes :

1. L'appareil ne doit pas produire de brouillage;
2. L'appareil doit accepter tout brouillage radioélectrique subi, même si le brouillage est susceptible d'en compromettre le fonctionnement.

SAR Statement: Tablet has been tested and meets applicable limits for radio frequency (RF) exposure. Specific Absorption Rate (SAR) refers to the rate at which the body absorbs RF energy. The SAR limit is 1.6 watts per kilogram in Canada that set the limit averaged over 1 gram of tissue. During testing, Mobile Phone(IC: 12564A-3119) radios are set to their highest transmission levels and placed in positions that simulate uses against the -head. with-no separation, and when worn or-carried against the torso of the body, with 10mm separation. To reduce exposure to RF energy, use a hands-free option, such as the built-in speaker phone, the supplied headphones, or other similar accessories. Cases with metal parts may change the RF performance of the device, including its compliance with RF exposure guidelines, in a manner that has not been tested or certified. Although this device has been tested to determine SAR in each band of operation, not all bands are available in all areas. Bands are dependent on your service provider's wireless and roaming networks.

The WLAN function for this device is restricted to indoor use only when operating in the 5150 to 5250 MHz frequency range