



Quick Start Guide



PRODUCT OVERVIEW

The all-in-one video conferencing device integrates a camera, microphone, and speaker, designed specifically for home office and commercial spaces. It aims to enhance the quality of remote video meetings, addressing the sound quality issues commonly associated with traditional equipment in multi-party meetings. With compatibility across mainstream conferencing platforms, users can easily engage in efficient collaboration.

KEY FEATURES

Excellent audio and video effects:

- The microphone and speaker support long-distance transmission up to 9 meters (with an optimal range of 5 meters), suitable for various environments such as home and office, ensuring clear communication.

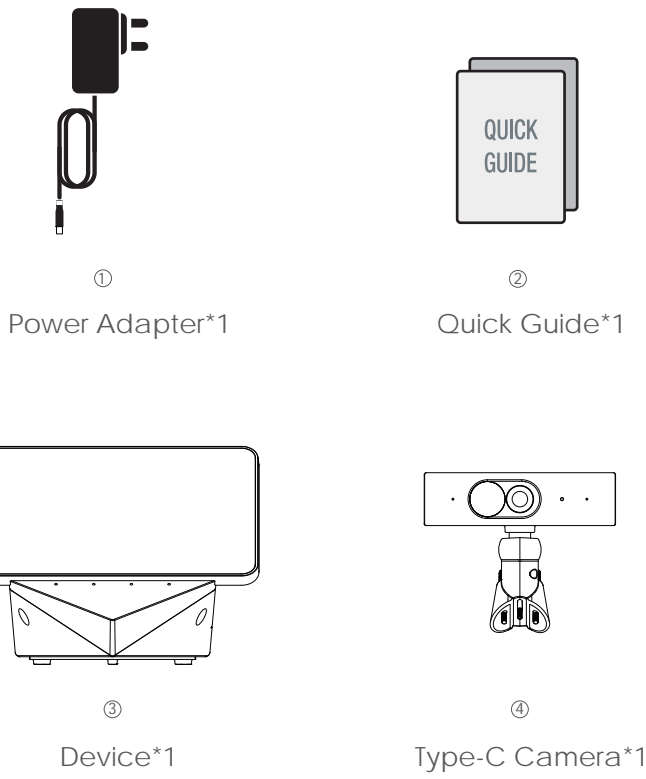
Unified schedule management:

- Video supports 1080P meetings, both for standalone use and for connection to large screen high-definition displays.
- Automatically synchronizes meeting schedules across multiple Google/Microsoft accounts to reduce the risk of missed meetings.
- Equipped with calendar view switching functions, providing users with personalized schedule viewing operations.

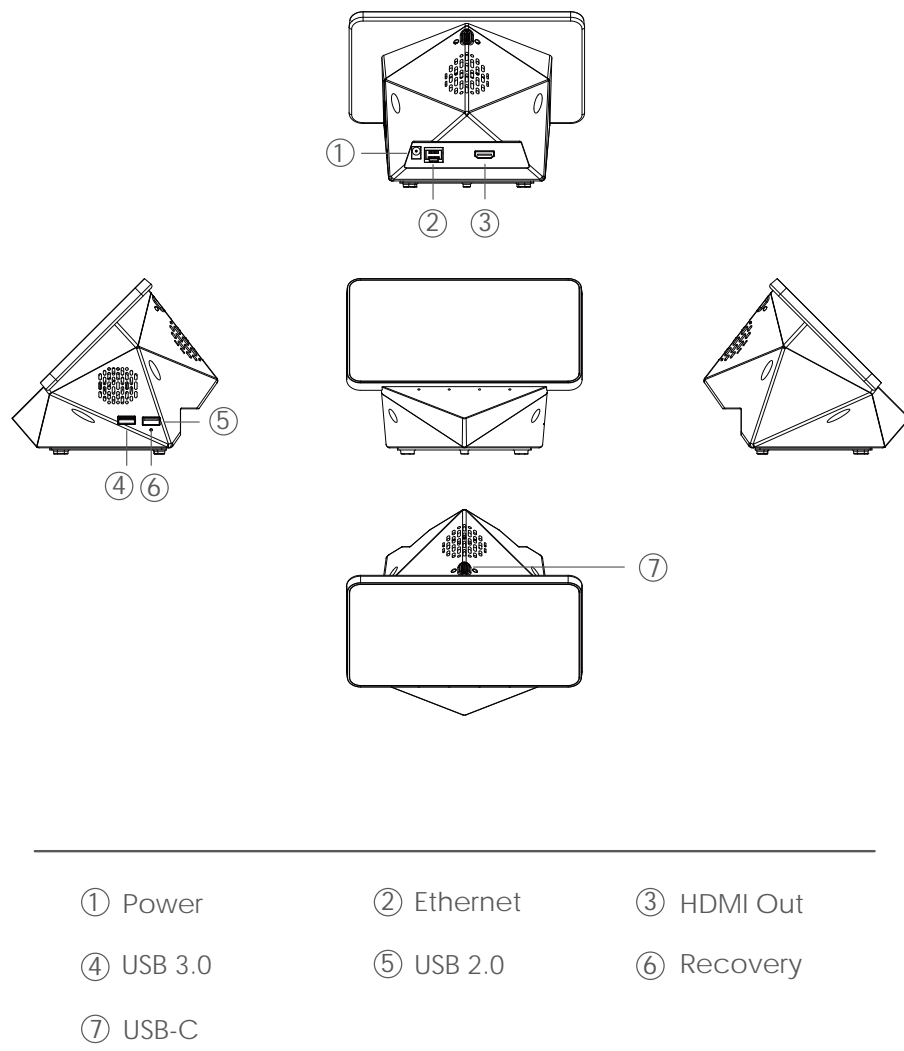
Multi-platform compatibility:

- Covers 8 mainstream video conferencing platforms, including GMeet, Zoom, Teams, Skype, Webex, Vovv, Lark, GoToMeeting, ensuring users can easily achieve one-click access to meetings.
- Users can experience product updates and optimizations in a timely manner, and the system's automatic upgrade feature will ensure that the device software is always running the latest version.
- Supports unlimited attendees in online meetings. For optimal experience, it is recommended to keep the number of in-person participants on a single device to around 20 people or fewer, adjustable based on the size of the room.

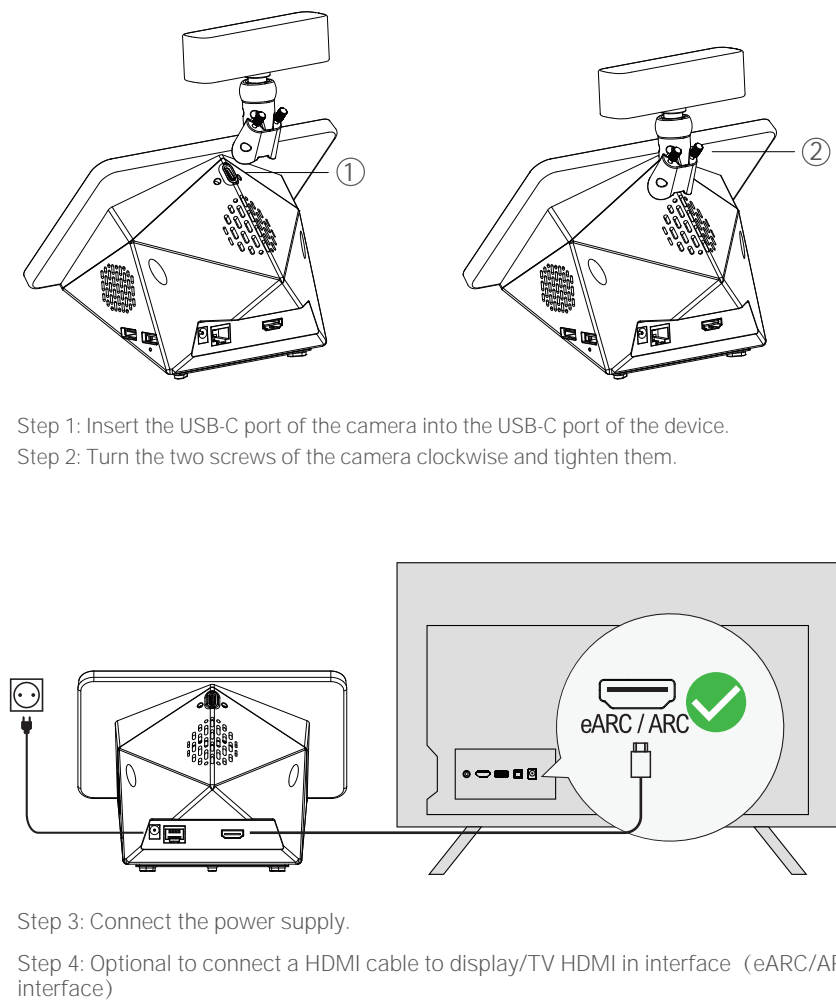
CONTENTS



DEVICE INFORMATION



SETUP DIAGRAM

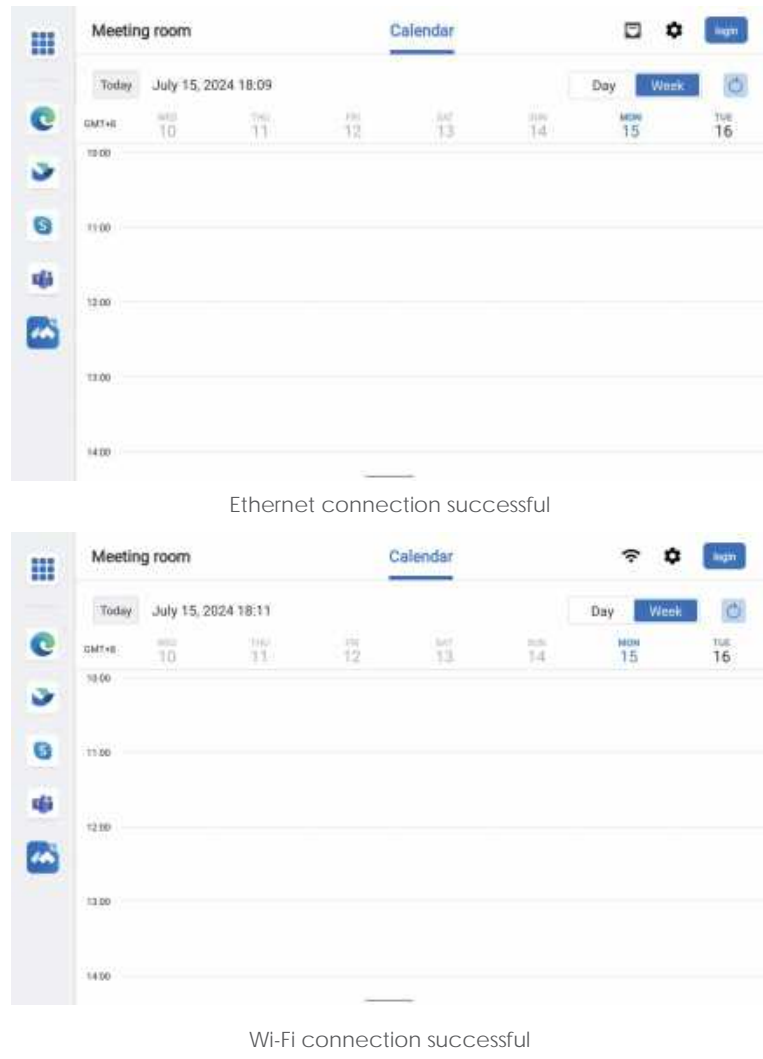


SPECIFICATION

Hardware	
Main Chipset	Amlogic A311D2
DMIPS	55k DMIPS
GPU	ARM Mali-G52 MP8 (8EE)
RAM	4GB LPDDR4X
Flash	eMMC 32GB
Network	
Wi-Fi	Dual-Band Wi-Fi 6 (2.4GHz / 5GHz Wi-Fi)
Ethernet	100Mbps
Basic Funtion	
Microphone	4" Far-field Microphone
Speaker	5W
HDMI	1* HDMI OUT
Bluetooth	Bluetooth 5.0
Display	7" Touchscreen
Camera	1080p USB-C Camera, Pan: 90° (±45°) Tilt: 6° (±3°)

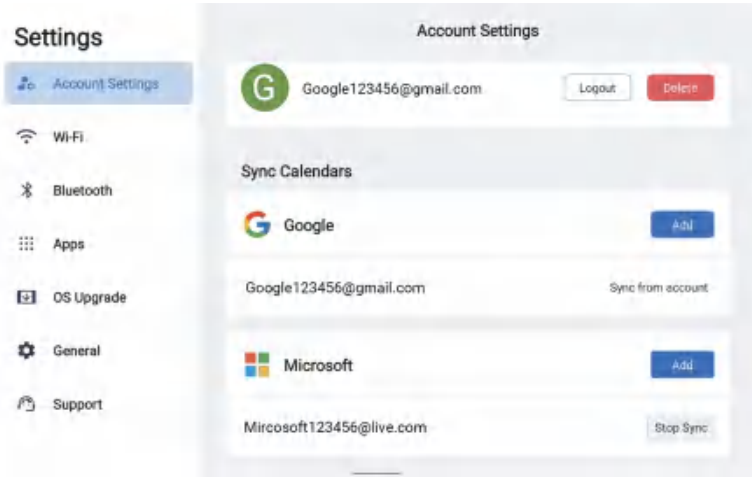
GETTING STARTED

1. Network Connection: Connect via Ethernet or Wi-Fi to ensure the device's successful network connection.



GETTING STARTED

2. Region & Time Zone Settings: When connecting the device via Wi-Fi, the system will automatically set your time zone. You may also choose to manually set in the settings.
3. Multiple Google or Microsoft Calendar Sync: Click the login button at the top right corner of the page to log in and sync multiple accounts in the account settings.



CONTACT

CUSTOMER SERVICE: Support@emersonsmart.com

SAFETY INFORMATION

FCC WARNING STATEMENT
This device complies with Part 15 of the FCC Rules. Operation is subject to the following two conditions: (1) This device may not cause harmful interference, and (2) This device must accept any interference received, including interference that may cause undesired operation. Warning: Changes or modifications not expressly approved by the party responsible for compliance could void the user's authority to operate the equipment. NOTE: This equipment has been tested and found to comply with the limits for a Class B digital device, pursuant to Part 15 of the FCC Rules. These limits are designed to provide reasonable protection against harmful interference in a residential installation. This equipment generates uses and can radiate radio frequency energy and, if not installed and used in accordance with the instructions, may cause harmful interference to radio communications. However, there is no guarantee that interference will not occur in a particular installation. If this equipment does cause harmful interference to radio or television reception, which can be determined by turning the equipment off and on, the user is encouraged to try to correct the interference by one or more of the following measures: Reorient or relocate the receiving antenna. Increase the separation between the equipment and receiver. Connect the equipment into an outlet on a circuit different from that to which the receiver is connected. Consult the dealer or an experienced radio/TV technician for help. FCC Radiation Exposure Statement: This equipment complies with FCC radiation exposure limits set forth for an uncontrolled environment. This equipment should be installed and operated with minimum distance 20cm between the radiator & your body.



SAFETY INFORMATION

CAUTION!
NOTICE: To prevent fire and electric shock, do not expose this device to rain or moisture. In order to avoid any possible risk of electric shock, never attempt to open the unit. In case of the unit breaking down, repair of the unit should be carried out by qualified technicians. No part of this unit should be repaired by users.

- WARNING!**
- Place the device in a well-ventilated location to prevent accumulation of internal heat.
 - Protect the device from high temperatures, humidity, water and dust.
 - Do not place any objects that might damage your unit near it (e.g. liquid filled objects or candles).

The terms HDMI and HDMI High-Definition Multimedia Interface, and the HDMI Logo are trademarks or registered trademarks of HDMI Licensing Administrator, Inc. in the United States and other countries.



WARNING: Cancer and Reproductive Harm -www.P65Warnings.ca.gov.

FCC regulatory conformance:

This device complies with Part 15 of the FCC Rules. Operation is subject to the following two conditions:

- (1) This device may not cause harmful interference.
- (2) This device must accept any interference received, including interference that may cause undesired operation.

NOTE: This equipment has been tested and found to comply with the limits for a **Class B** digital device, pursuant to part 15 of the FCC Rules. These limits are designed to provide reasonable protection against harmful interference in a residential installation.

This equipment generates uses and can radiate radio frequency energy and, if not installed and used in accordance with the instructions, may cause harmful interference to radio communications. However, there is no guarantee that interference will not occur in a particular installation. If this equipment does cause harmful interference to radio or television reception, which can be determined by turning the equipment off and on, the user is encouraged to try to correct the interference by one or more of the following measures:

- Reorient or relocate the receiving antenna.
- Increase the separation between the equipment and receiver.
- Connect the equipment into an outlet on a circuit different from that to which the receiver is connected.
- Consult the dealer or an experienced radio/TV technician for help

NOTE: The manufacturer is not responsible for any radio or TV interference caused by unauthorized modifications to this equipment. Such modifications could void the user's authority to operate the equipment.

Changes or modifications not expressly approved by the party responsible for compliance could void the user's authority to operate the equipment

RF Exposure

This equipment complies with FCC radiation exposure limits set forth for an uncontrolled environment. This equipment should be installed and operated with minimum distance of 20 cm between the radiator and your body. This transmitter must not be co-located or operating in conjunction with any other antenna or transmitter.