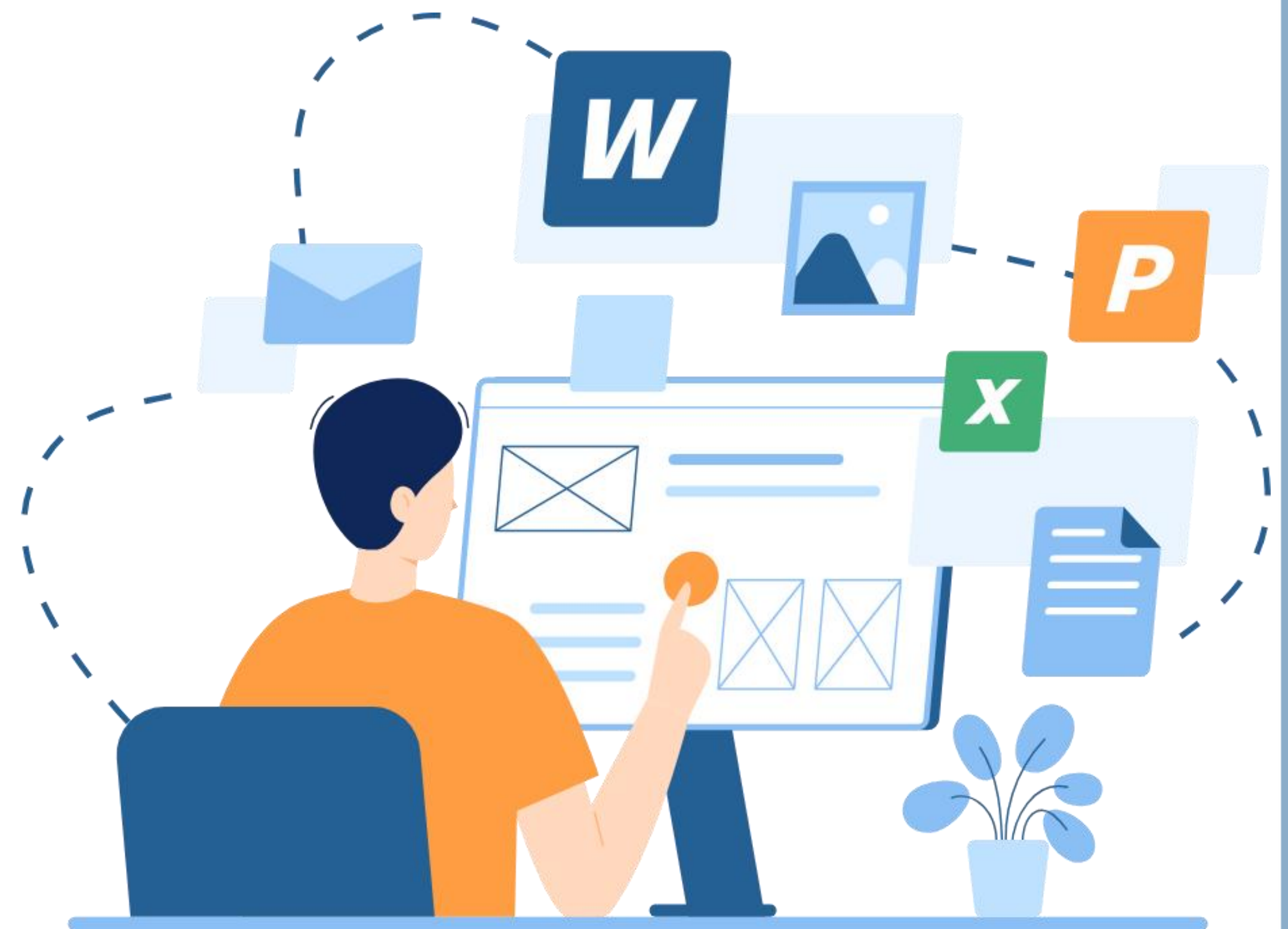


Shenzhen HamyWe Technology Co Ltd

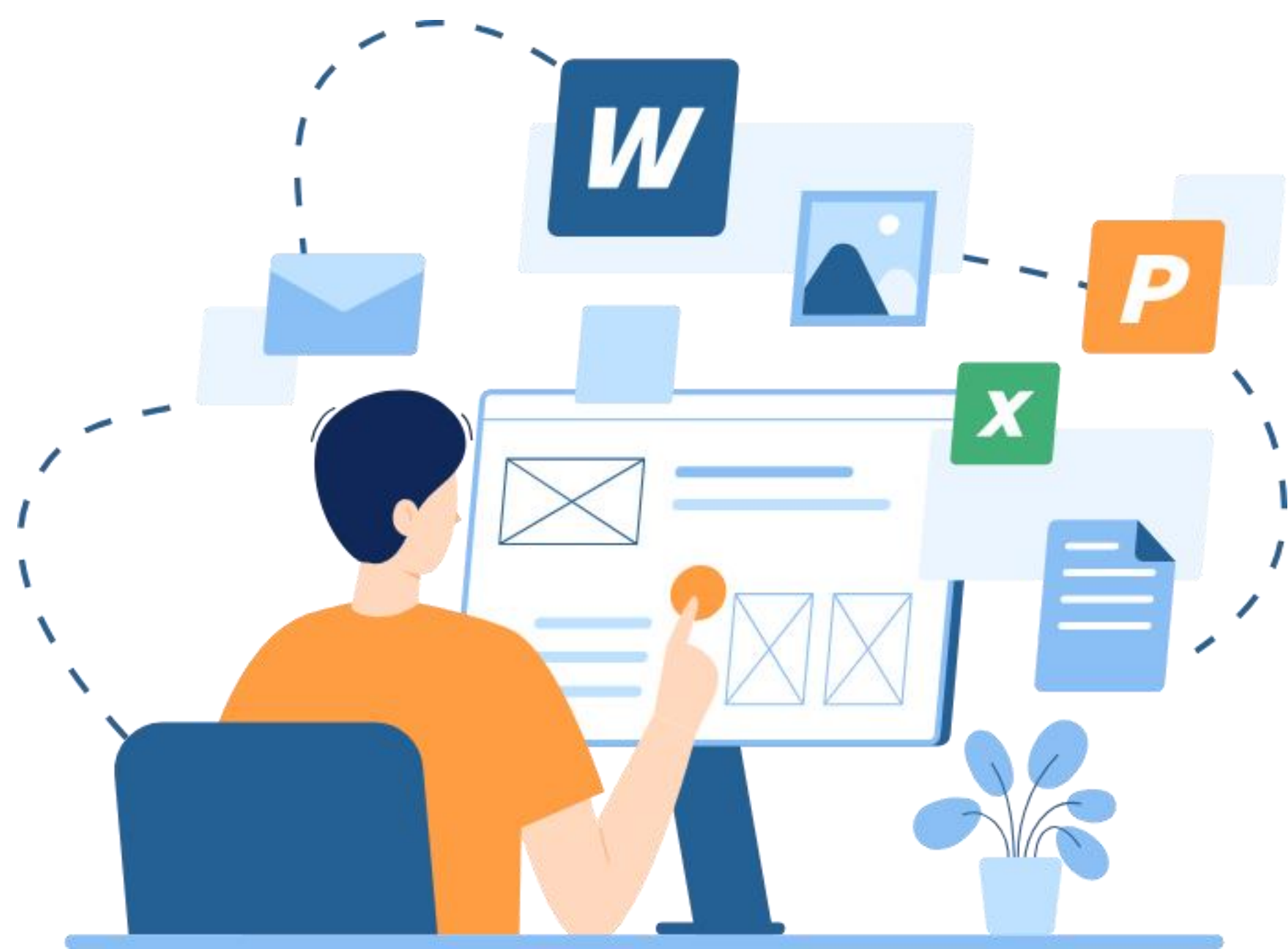
battery camera antenna passive report

- Tested by: Guosong Li
- Tel: 15889324702
- Date: May 28, 2024





Contents

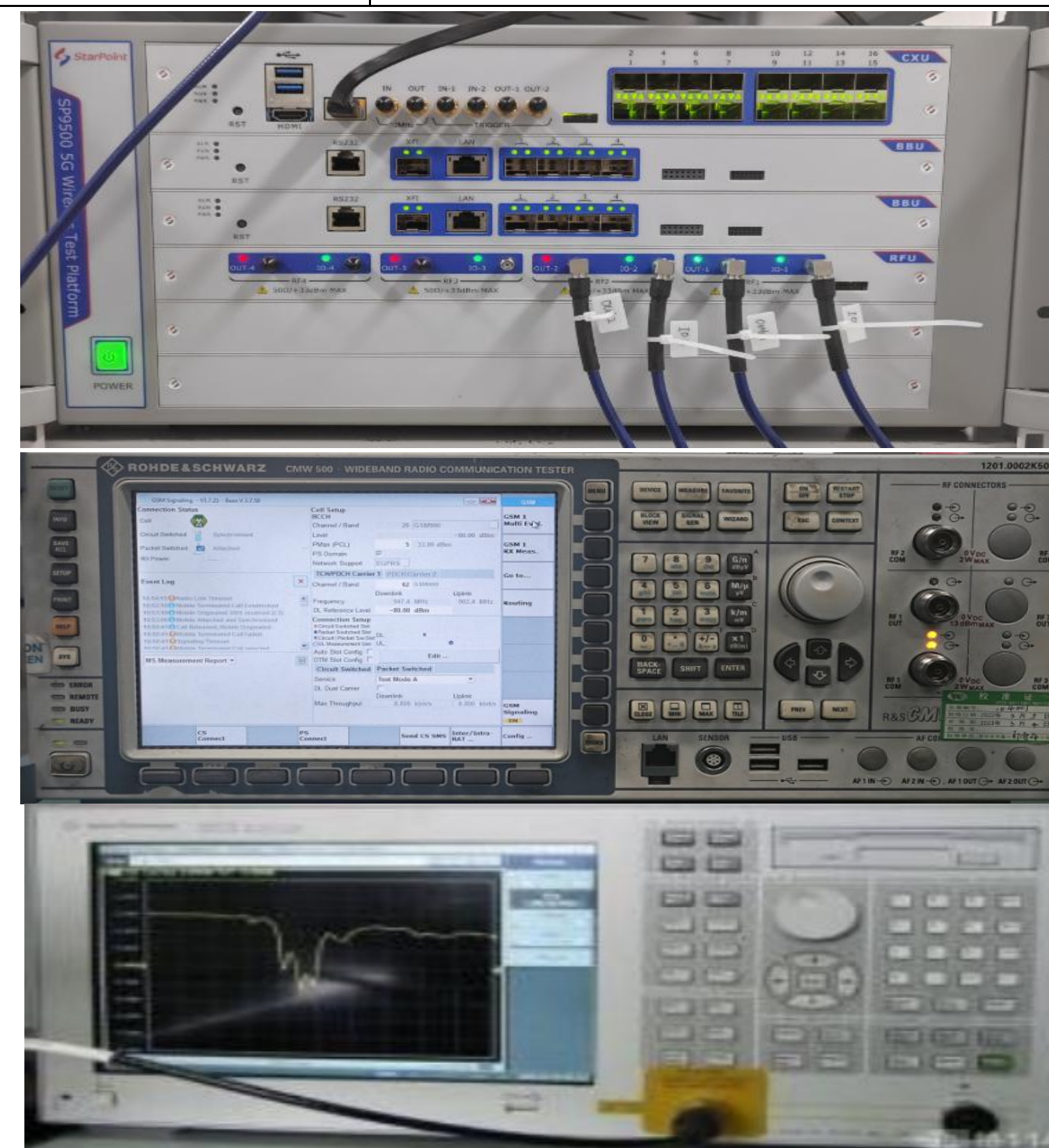
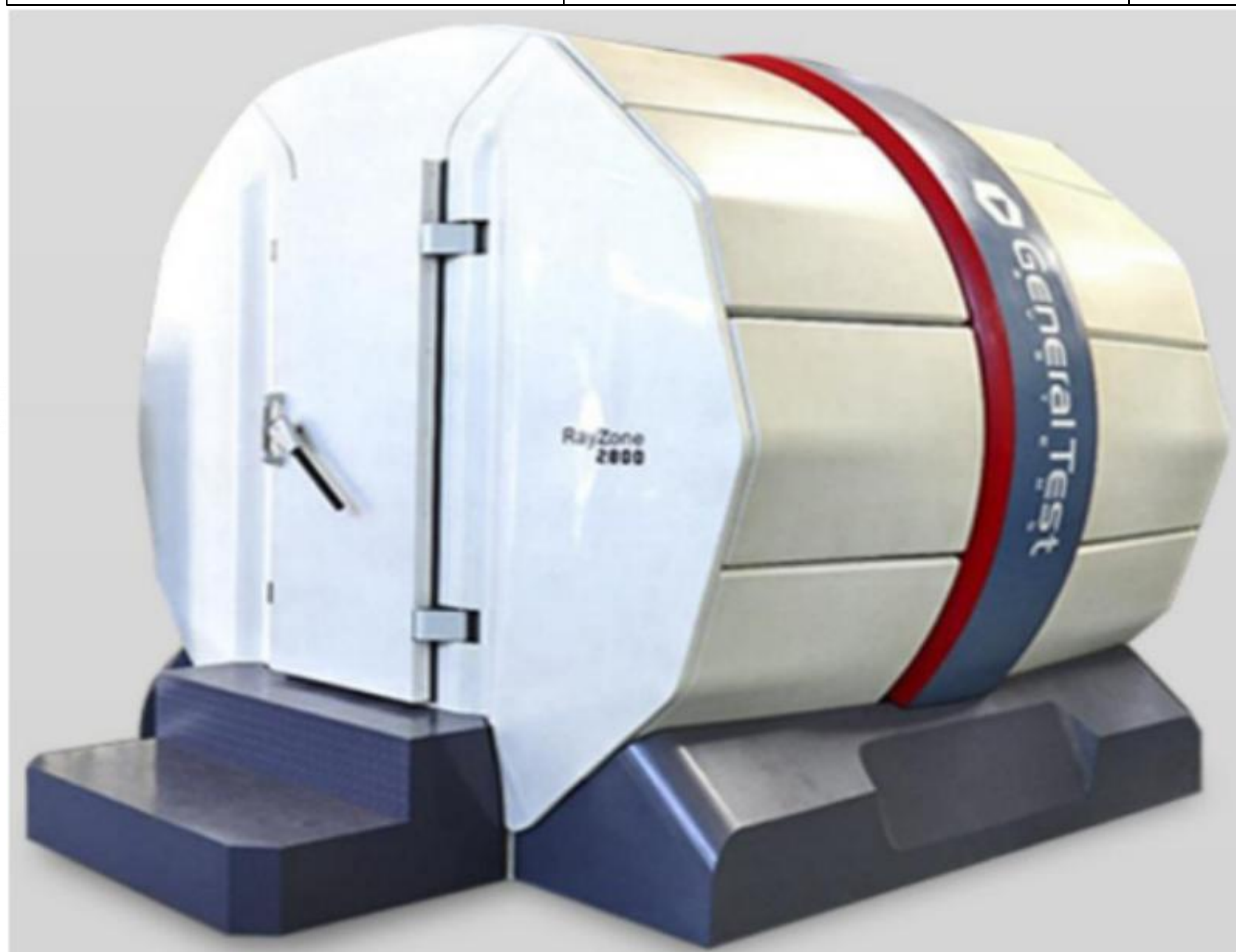


- 1 Test Equipment
- 2 Project Description
- 3 Debug Version Log
- 4 Matching Records
- 5 S11 Parameter Testing
- 6 OTA Measurement Results
- 7 Important Notes



Passive & Active Testing — 5G Anechoic Chambe

◆ Test System	◆ Test Environment	◆ Active Testing	◆ Passive Testing
GTS2800	Temperature : 22°C±3°C Humidity : 50%±15%	Supports 5G/4G/3G/2G Supports BT/WIFI/GPS	600MHZ——6G



Project Debugging Overview

Device Type	Battery Camera	
Antenna Type & Frequency Band	wifi	2.4GHz
	BT	N/A
Antenna Material/Form	FPC	



Debug Version History

X2775

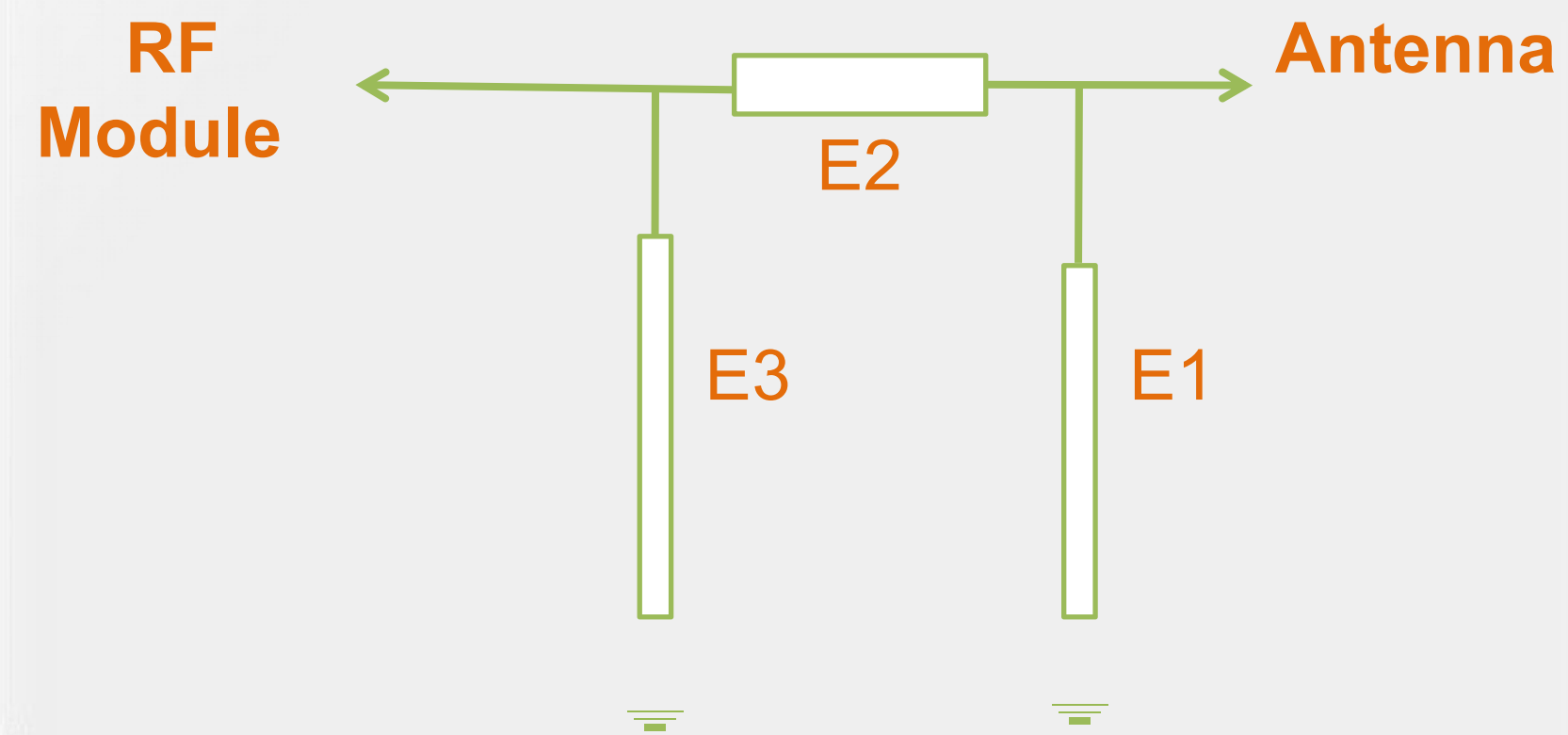


Version	Date	Change Description
V1	2024/4/19	Initial antenna tuning
V2	2024/5/28	Functional testing phase

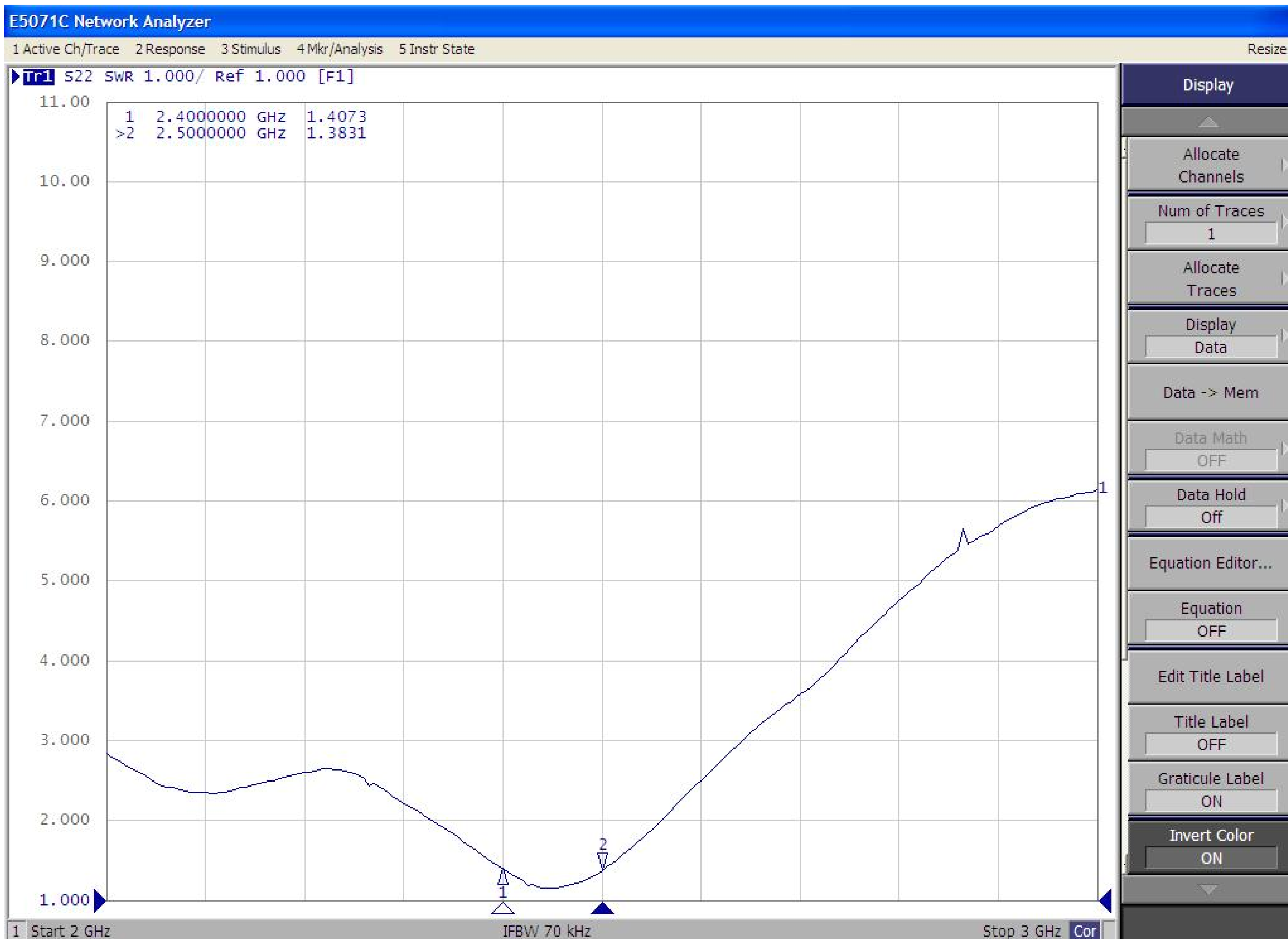


匹配电路

匹配是否有改动
否



驻波图

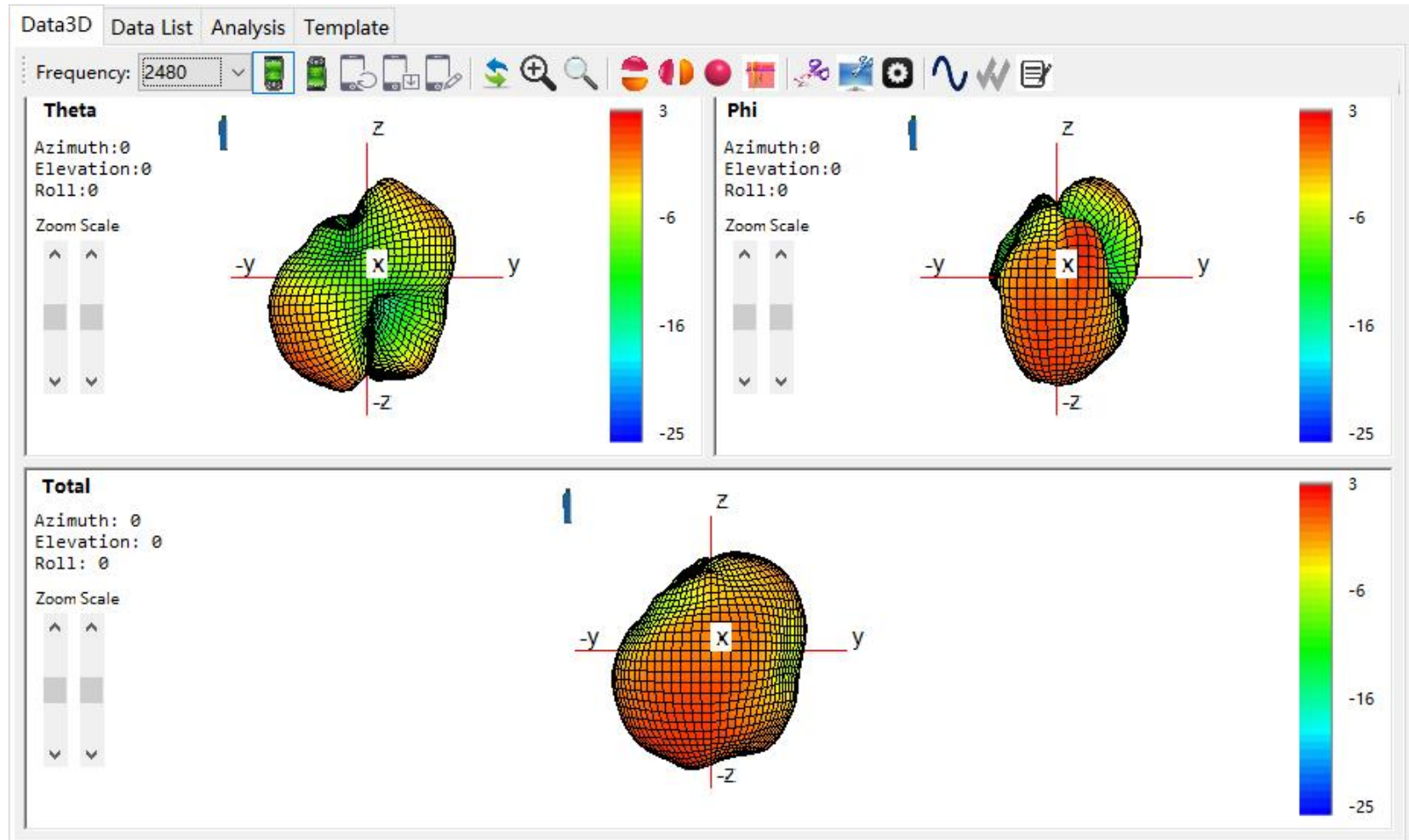
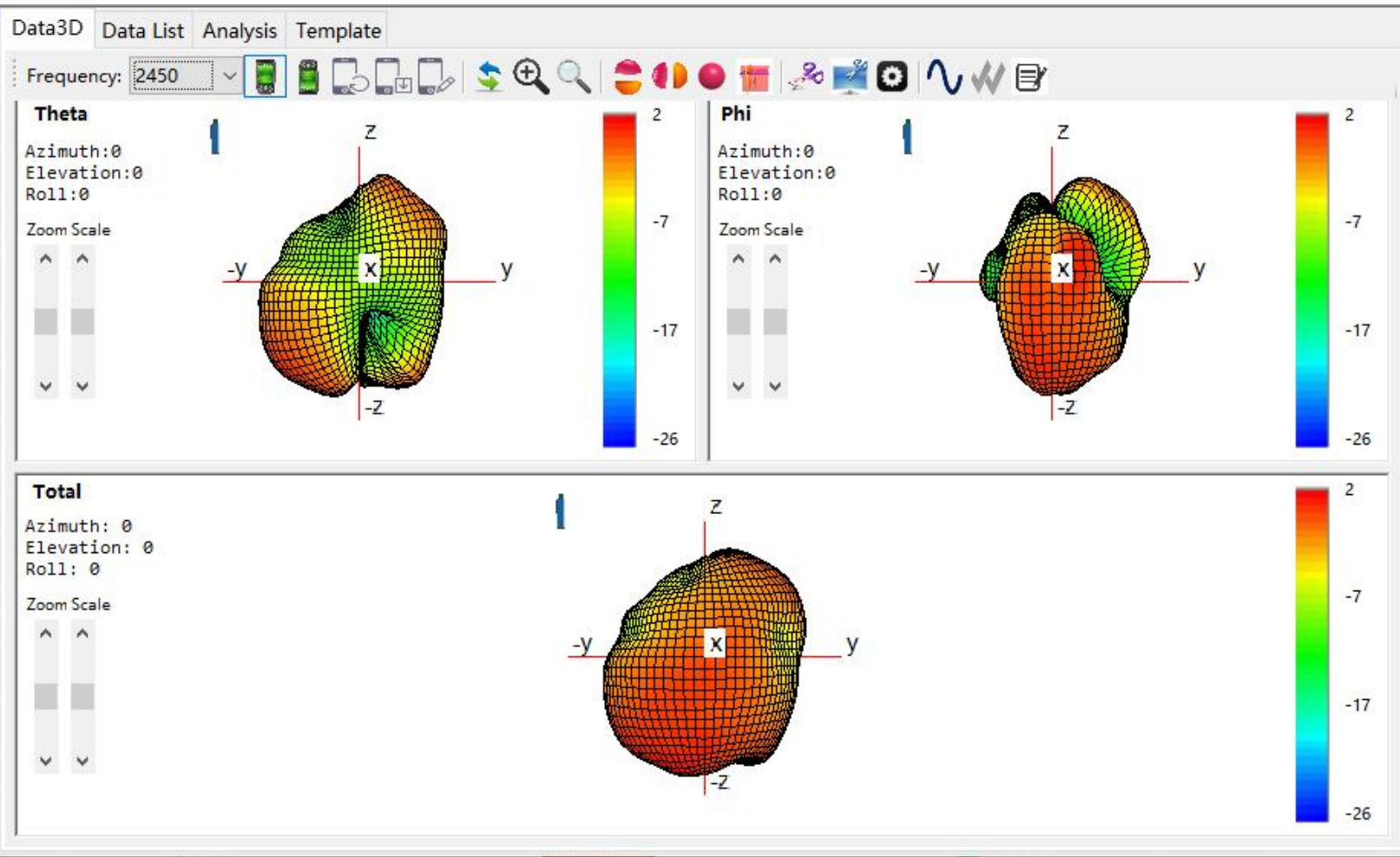
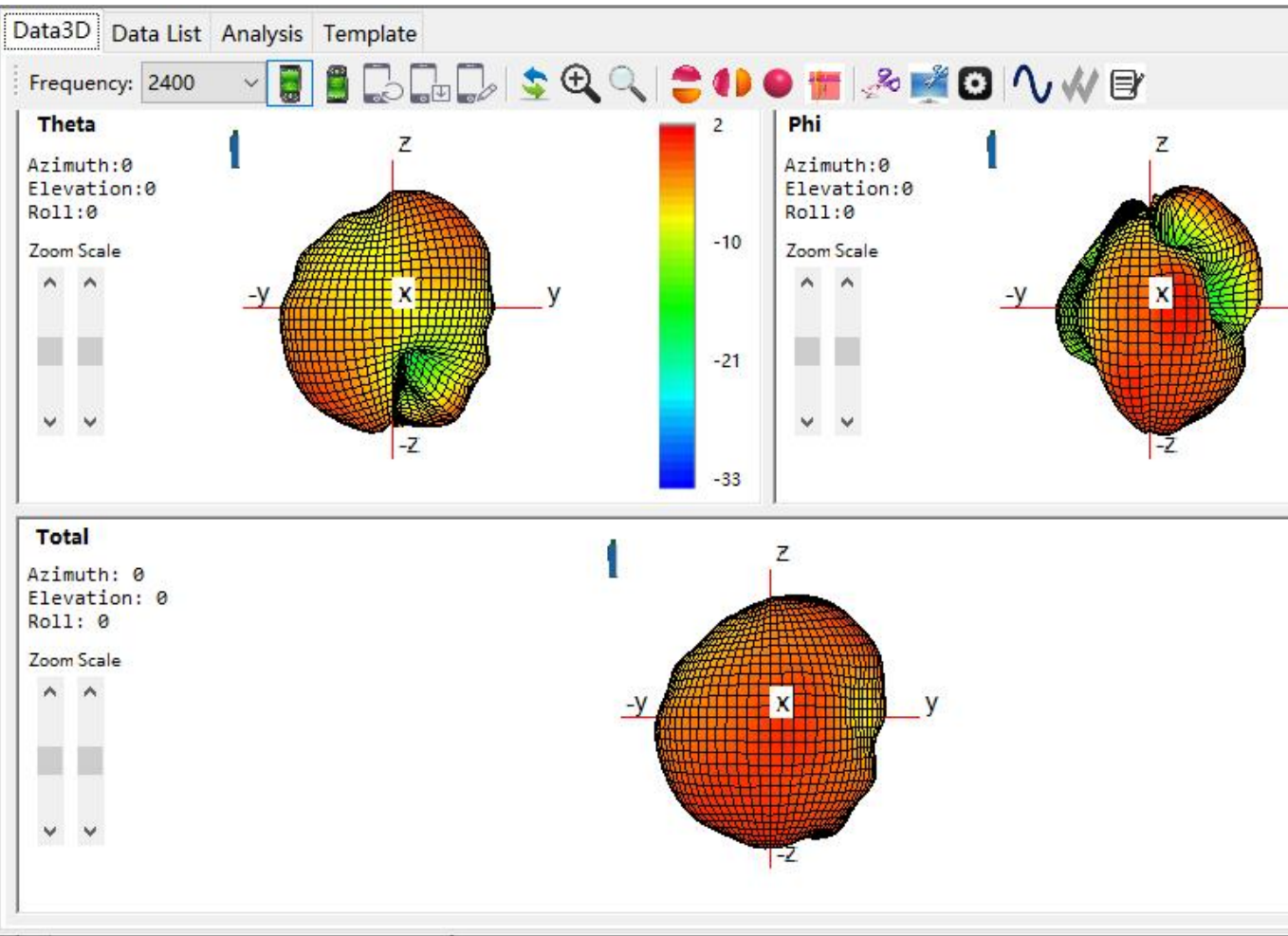


GAIN & Efficiency

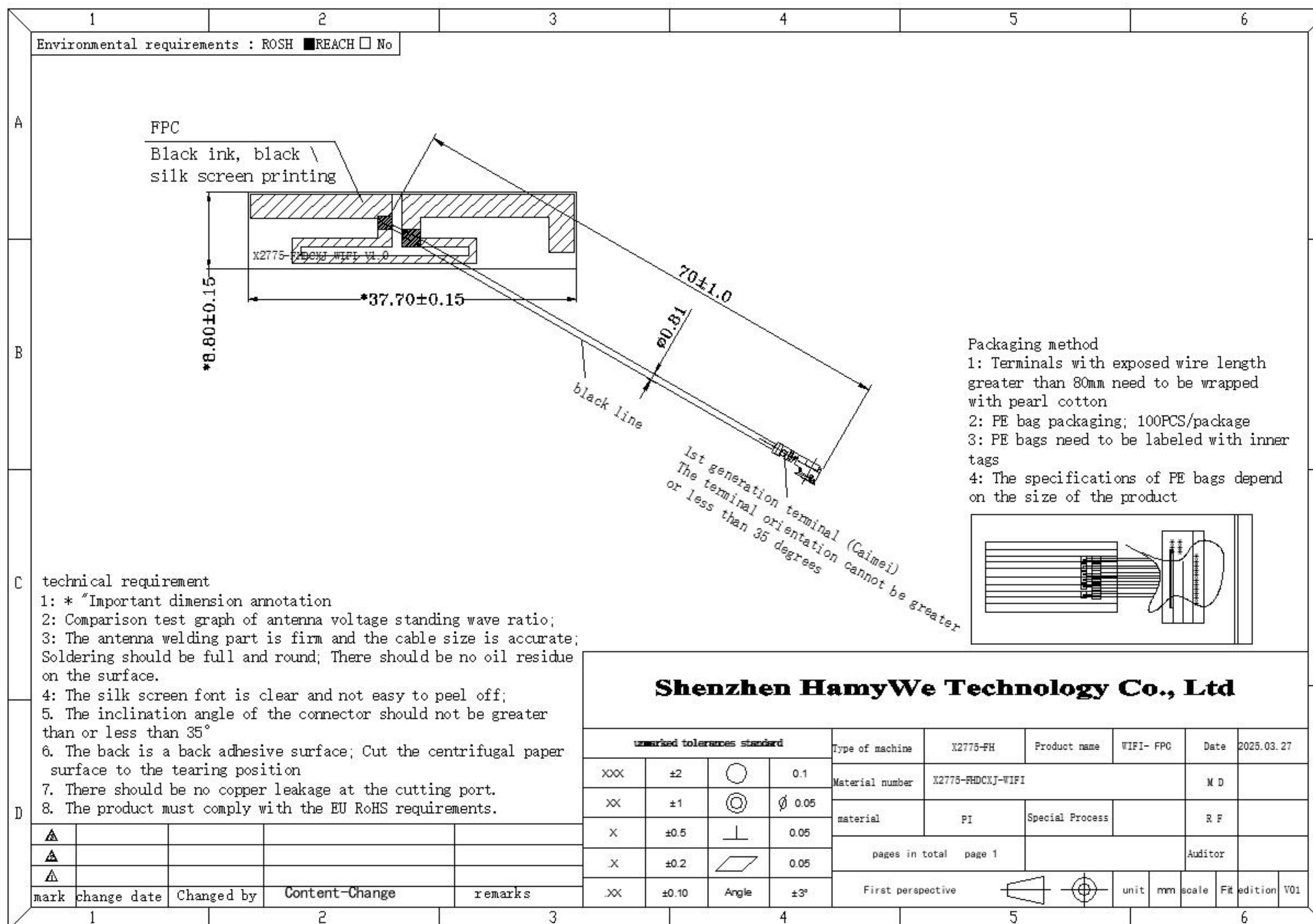
Frequency (MHz)	Gain (dB)	Efficiency (%)
2400	1.18	52.33
2410	0.96	52.32
2420	1.42	50.71
2430	1.59	52.27
2440	1.42	51.37
2450	1.89	51.86
2460	1.94	53.33
2470	2.24	53.45
2480	2.06	53.21
2490	2.59	52.71
2500	2.27	51.75



3D Radiation Pattern



Antenna Size Diagram



Important Notice



1

Verify whether matching circuits have been modified and if environmental treatments are feasible, as these directly impact antenna performance. Raise any objections promptly with our team

2

If your device undergoes material changes, software updates, or environmental treatment adjustments, you must provide the latest unit for our verification

3

For devices intended for third-party certification or testing:

- Submit the unit to us first for validation (including RF performance verification).
- Do not proceed with external testing until we confirm compliance.

Reason: Consistency in motherboard design, environmental treatments, and antenna assembly critically affects antenna performance



THANKS FOR WATCHING

Tel: +86-755-3688170

**Address: 1st Floor, Building B, Jinghang Industrial Park, Liuxian
3rd Road, Bao'an District 71, Shenzhen, China**

