

➤ USE OF Bluebeep High Chair GUARDIAN®

- When you first install **Bluebeep High Chair GUARDIAN®** on a baby highchair, initialize it in accordance with the Bluebeep Guardian Application user guide. www.blue-beep.com.

Bluebeep High Chair GUARDIAN® is designed to go into sleep mode if no event nor child presence are detected. To wake it up, see it on your smartphone, and activate the monitoring, you should shake slightly the high chair. This awakening is performed naturally at the child's installation.

If the distance between the smartphone and the highchair is approximately 50 feet, depending on the nature of the wall partitions, The Bluebeep Guardian application will sound a reminder alerting you, if the baby is still on his chair.

This reminder is accompanied by the sending of SMS and Email messages to the addresses you have entered.

When using on board an aircraft : remove the **Bluebeep High Chair GUARDIAN®** battery.

To comply with the FAA Electronic Device Regulations, the battery must be removed before take-off.

Note: After landing, put the battery back in place.

CAUTION : the user that changes or modifications not expressly approved by the party responsible for compliance could void the user's authority to operate the equipment.

NOTE : this equipment has been tested and found to comply with the limits for a Class B digital device, pursuant to part 15 of the FCC Rules. These limits are designed to provide reasonable protection against harmful interference in a residential installation. this equipment generates, uses and can radiate radio frequency energy and, if not installed and used in accordance with the instruction, may cause harmful interference to radio communications. However, there is no guarantee that interference will not occur in a particular installation. If this equipment does cause harmful interference to radio or television reception which can be determined by turning the equipment off and on, the user is encouraged to try to correct interference by one or more of the following measures :

- Reorient or relocate the receiving antenna
- Increase the separation between the equipment and receiver
- Connect the equipment into an outlet on a circuit different from that to which the receiver is connected
- Consult the dealer or an experienced radio/TV technician for help

Under Industry Canada regulations, this radio transmitter may only operate using an antenna of a type and maximum (or lesser) gain approved for the transmitter by industry Canada. to reduce potential radio interference to other users, the antenna type and its gain should be so chosen that the equivalent isotropically radiated power (e.i.r.p.) is not more than that necessary for successful communication.

This device complies with FCC and Industry Canada radiation exposure limits set forth for general population. This device must not be co-located or operating in conjunction with any other antenna or transmitter.

LIMITED WARRANTY

Bluebeep warrants this product (including accessories) to the original user ("Buyer") to be free from defects in materials Or manufacture for a period of 1 year from the date of original purchase of this product or, as the case may be, over the legal period of the national regulations. The sole responsibility of Bluebeep under the terms of this limited express warranty is to repair or replace, at its discretion, any product that will be deemed to be defective and that will be determined by Bluebeep to be covered under the terms of this guarantee.

Repair or replacement under the terms of this warranty is the sole remedy of the buyer. Proof of Purchase in the form of an invoice or contract of sale, proving that the Product is still under the warranty period, shall be provided to obtain warranty service. This limited express warranty is granted EXCLUSIVELY by Bluebeep to the original purchaser of this Product and cannot be assigned or transferred to subsequent purchasers or users of this product. For warranty service, contact your dealer or log on to www.blue-beep.com.

Except to the extent prohibited by applicable law, any implied warranty of merchantability or fitness for a particular purpose of this product is totally excluded. Bluebeep will not be responsible for any incidental, indirect, special, or consequential damages or punitive damages of any kind for breach of the express limited warranty on this product, or any warranty implied by operation of the law. Other than the express limited warranty set forth above, there are no other warranties that accompany this product and any oral, written or any other express representation of any kind is hereby disclaimed.



This symbol indicates that you must follow the instructions for use.



This sign indicates that this product must not be scrapped with household waste as specified in the Directive European Union WEEE 2002/96 / EC & EN50419 and that it was placed on the market after August 13, 2005.

For more information on the appropriate treatment of this material, if it is to be recycled or entrusted to a collection point.

bluebeep ➤

WE CARE • WE CONNECT

BLUEBEEP SAS, ZI LES BOULAIES, MALE, 61260 VAL AU PERCHE, FRANCE

High Chair GUARDIAN®

➔ INSTALLATION INSTRUCTIONS



➤ GENERAL INFORMATIONS Bluebeep High Chair GUARDIAN®

Initialize your GUARDIAN® Bluebeep High Chair according to the application's user guide Bluebeep Guardian.

Attach the child in the high chair in accordance with the high chair supplier's instructions.

In the event that no smartphone is connected to the module, if it is equipped with a buzzer, **Bluebeep High Chair GUARDIAN®** will emit a series of short beeps when you install the child. This signal can only be heard once after the child is installed. **Bluebeep High Chair GUARDIAN®** will then be ready to inform you continuously.

Use of Batteries :

- **Bluebeep High Chair GUARDIAN®** is powered by two AAA batteries (rechargeable or not) not included. The application Bluebeep Guardian informs you of the condition of the batteries. As soon as the worn-out pictogram appears, you will have to replace them.
- The useful life of the batteries under normal use is estimated to be approximately 4 months.

➤ TECHNOLOGY Bluebeep High Chair GUARDIAN®

Questions ? Comments ? Visit our website : www.blue-beep.com.

FCC Certified - Model: High chair GUARDIAN®, FCC ID:2A0V7-HC0001

This device complies with Part 15 of the FCC Rules. Operation is subject to the following two conditions: (1) This device may not cause harmful interference, and (2) this device must accept any other interference received, including interference that may cause undesired operation. Changes or modifications to this unit without the approval of the third party responsible for compliance may cancel the authorization of the user to use this equipment.

Certified by Industry Canada (IC) - Model: High chair GUARDIAN®, IC:23639-HC0001

This device complies with Industry Canada's non-licensing RSS standards.

Operation is subject to the following two conditions: (1) this device may not cause harmful interference and (2) this device must accept any other interference, including interference that may cause undesired operation not wanted.

➤ WARNINGS

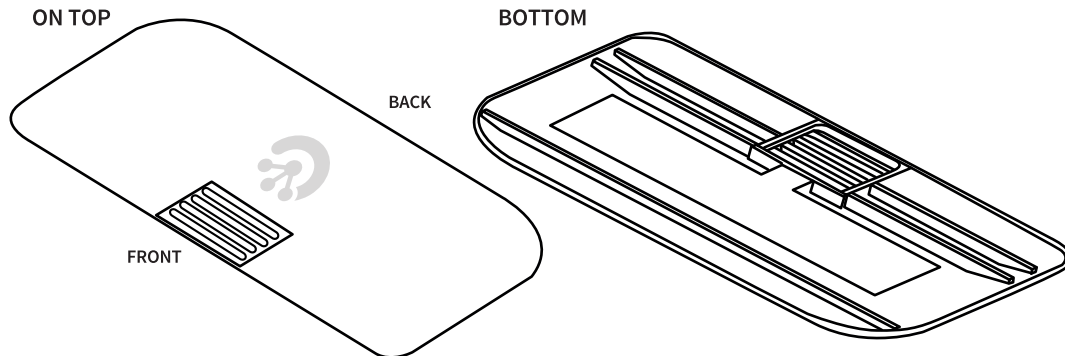
- 1- Do not ingest battery, risk of chemical burn.
- 2- This product contains batteries. If swallowed, the battery may cause severe internal burns in just 2 hours, which can be fatal.
- 3- Keep new and used batteries out of the reach of children. If the battery compartment does not close securely, do not use the product and keep it out of the reach of children. In case of suspected ingestion of an accumulator or introduction into any part of the body, immediately seek medical advice.
- 4- CAUTION RISK OF EXPLOSION IF THE BATTERY IS REPLACED BY A TYPE BATTERY INCORRECT. DISPOSE OF USED BATTERIES IN ACCORDANCE WITH THESE INSTRUCTIONS.

bluebeep ➤

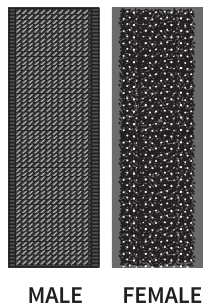
WE CARE • WE CONNECT

PIECES PROVIDED :

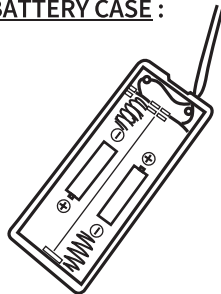
ELECTRONIC MODULE :



VELCRO :



BATTERY CASE :

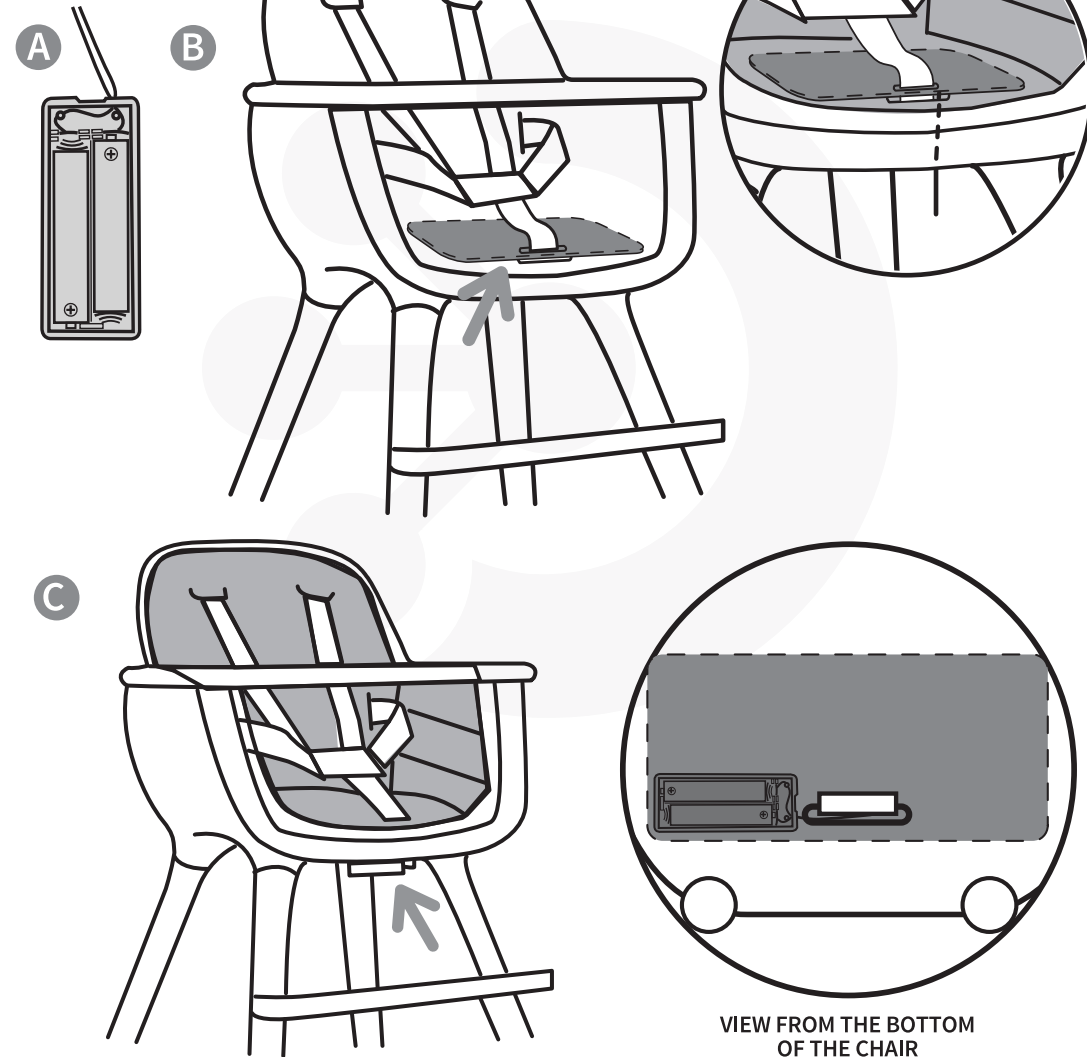


FIRST COMMENTS: YOUR BLUEBEEP HC GUARDIAN® IS POWERED BY TWO AAA BATTERIES NOT INCLUDED.

➤ INSTALLATION OF Bluebeep High Chair GUARDIAN®

- A** • Open the battery cover by turning it counterclockwise.
 - Place the batteries in the correct direction.
 - Close the battery cover and push the switch to ON if necessary.
- B** • Lift the seat cushion cover.
 - Place the module on the seat.
 - Pass the power cord from the module into the crotch passage of the chair, or at the back of the seat between seat and backrest.
 - Pass the crotch in the ad hoc passage of the module.
 - Replace the seat cushion cover.
- C** • Secure the battery box under the seat as close to the crotch or at the back of the backrest, by means of the provided velcro.
 - Connect the battery case to the backrest module.

bluebeep ➤
WE CARE • WE CONNECT



➤ FINAL TEST:

- Avoid any metal parts near (2 inches) from Bluebeep High Chair GUARDIAN® which could distort the information transmitted.
- Check the mounting direction of the batteries.
- Make sure the child is securely fastened and does not come off..
- Check that the battery case is not placed below the electronic part of the module.