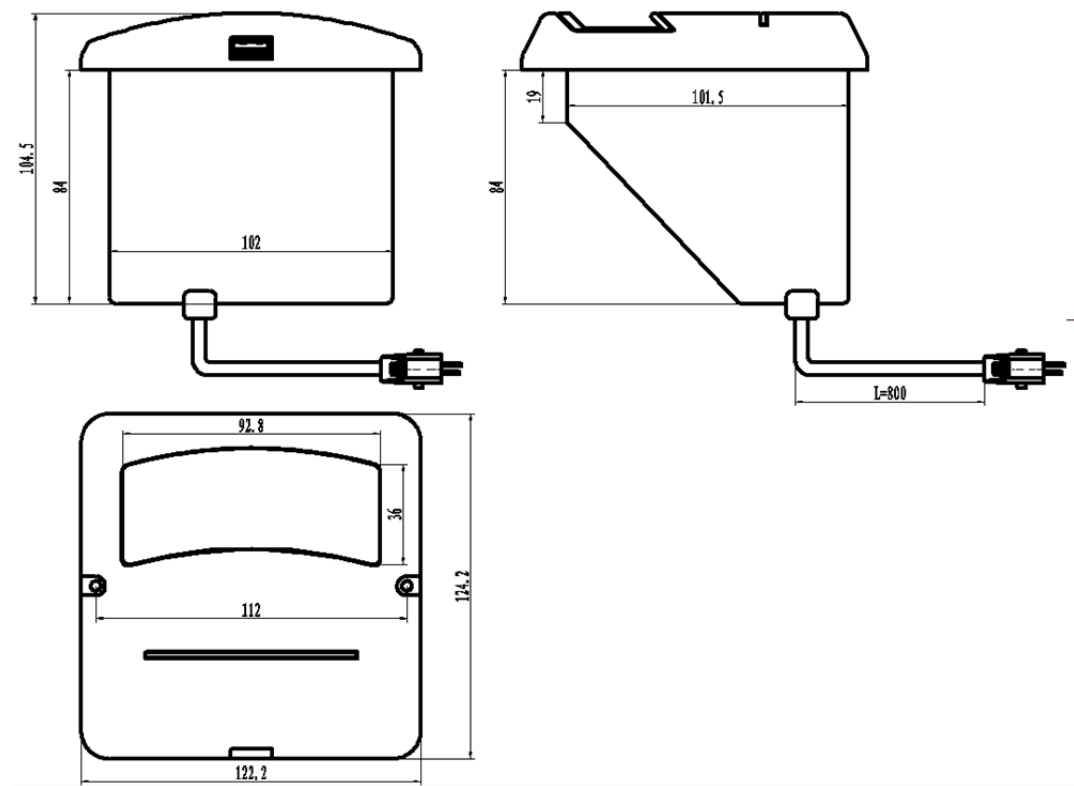


## KDDY101B Wireless Charging Manual

### 1、Product parameter:

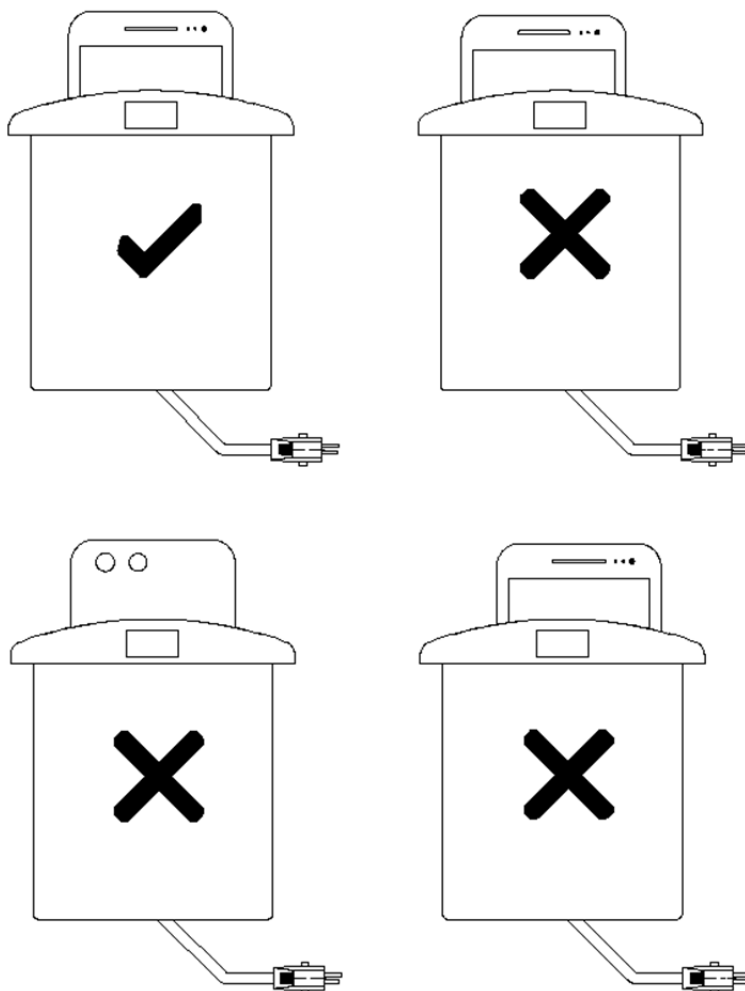
Type of product	Wireless charger	
Model	KDDY101B	
Wireless charging Compatibility Protocol output power	QI-BPP	5W
	Samsung Fast Charge Protocol	10W
input voltage	DC29V	
Protection function	Over temperature protection , Foreign object detection	
Indicator light description	1. Standby state: The indicator light is not on 2. Charging status: indicator light is on green 3. Error alarm status such as overheating and foreign objects during wireless charging: The indicator light flashes green.	
USB output	Maximum output 5V 2A, supports simultaneous operation of USB charging and wireless charging	
Working environment temperature	0-35℃	

## 2、Outline drawing



## 3、instructions:

- 1) Use a dedicated power adapter to provide wireless charging with DC29V power supply. After power supply, normal operation can begin.
- 2) . Place a phone with wireless charging function that needs to be charged (such as iPhone 8/8 plus/X, Samsung Note8/S9+, Huawei Mate20 Pro, etc.) into the wireless charging slot, and charging will automatically start. When the wireless charger is in normal working condition, the LED green light is always on. Please place your phone in the center of the slot, as it may cause low charging efficiency or disconnection due to being placed next to the phone.



3) When charging, keep the center position of the phone aligned with the center position of the wireless charger to perform wireless charging. If the charging cannot work properly, please adjust the position of the phone until it displays normal power on or the LED green light stays on.

#### 4、matters needing attention:

- During charging, metal objects should not be mixed between the phone and the wireless charger.
- To ensure normal charging, it is recommended that the thickness of plastic or silicone phone cases be less than 1-2mm. The material and thickness of the phone case can affect normal charging function and exacerbate the temperature of wireless charging. If necessary, remove the phone case for wireless charging.
- Do not forcefully squeeze or collide with the product.
- Do not disassemble, dismantle or modify by yourself.
- Do not place the product near a source of fire or in fire or water.
- Do not use wireless chargers under severe high temperature, humidity, or corrosive conditions to avoid damaging the circuit and causing leakage.
- Do not place magnetic cards (such as ID cards, bank cards, etc.) with magnetic strips or chips too close to avoid causing the card to become invalid.
- Please maintain a distance of at least 20cm between implanted medical devices (pacemakers, cochlear implants, etc.) and wireless chargers to avoid potential interference with medical devices.
- Children should be taken care of to avoid unnecessary accidents.
- Product warranty period: 2 years.
- This device complies with part 15 of the FCC Rules. Operation is subject to the following two

conditions: (1) This device may not cause harmful interference, and (2) this device must accept any interference received, including interference that may cause undesired operation.

**FCC warning:**

Any Changes or modifications not expressly approved by the party responsible for compliance could void the user's authority to operate the equipment.

Note: This equipment has been tested and found to comply with the limits for a Class B digital device, pursuant to part 15 of the FCC Rules. These limits are designed to provide reasonable protection against harmful interference in a residential installation. This equipment generates uses and can radiate radio frequency energy and, if not installed and used in accordance with the instructions, may cause harmful interference to radio communications. However, there is no guarantee that interference will not occur in a particular installation. If this equipment does cause harmful interference to radio or television reception, which can be determined by turning the equipment off and on, the user is encouraged to try to correct the interference by one or more of the following measures:

- Reorient or relocate the receiving antenna.
- Increase the separation between the equipment and receiver.
- Connect the equipment into an outlet on a circuit different from that to which the receiver is connected.
- Consult the dealer or an experienced radio/TV technician for help.

This equipment complies with FCC radiation exposure limits set forth for an uncontrolled environment. This equipment should be installed and operated with minimum distance 20cm between the radiator & your body.