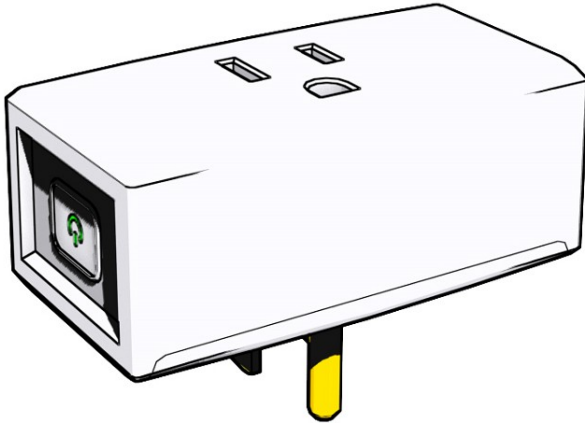


WI-FI smart socket outlet

User Manual

Product Schematic



Function Key and Indicator Description

Short press the power button, red indicator lights up means power on, red indicator lights off means power off.

Long press the power button for about 5 seconds, blue indicator flashes means the product begin enter into the distribution network mode.

Blue indicator flashes slowly means the network connection is abnormal, please check the router or network configuration.

Technical Parameters

Maximum current: 10A

Rated voltage: 100-240V

Rated power: 1100W

Input voltage: 110-240V

Wireless Type: Wi-Fi 2412-2462MHz

Operating temperature: 0 °C - 40 °C

Support system: Android \IOS

Turn On Intelligence

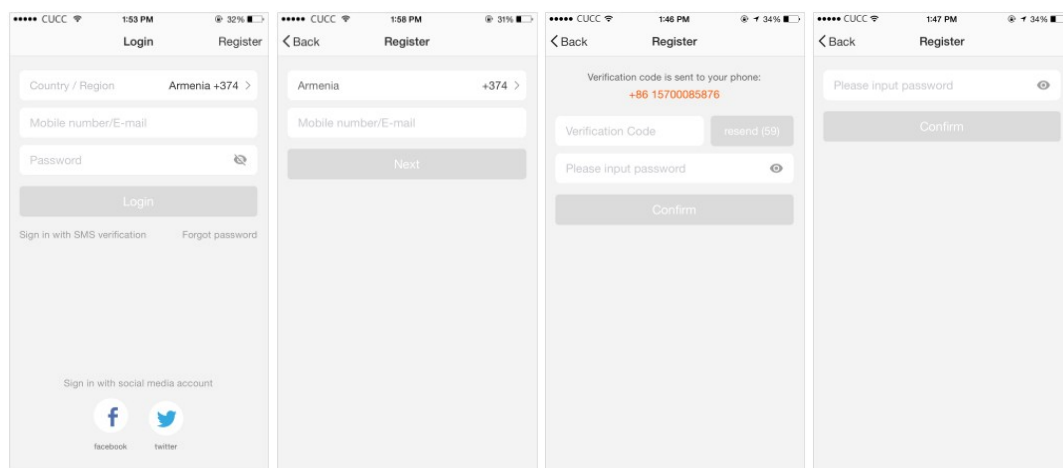
Use your phone to scan the QR code below or search “smart life” in application market to download and install the App



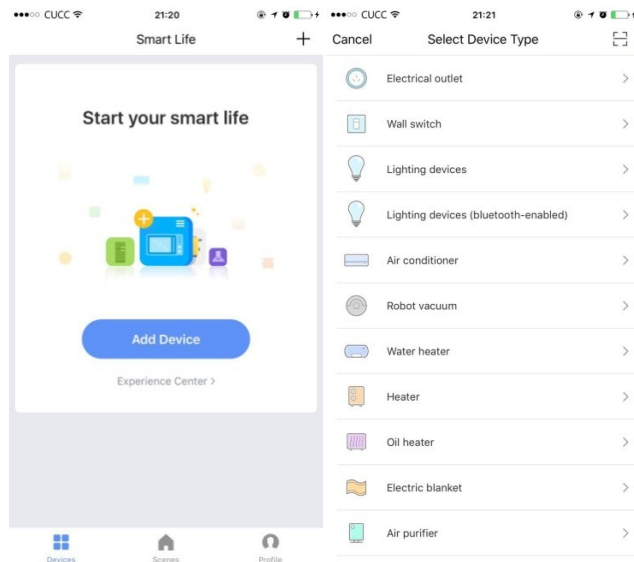
Step 1: Registration and login "smart life" APP.

If you don't have the account of "Smart life"APP,register an account or sign in with cellphone number +verification code.This page describes the Registration process.

- 1.Tap"Register"in the upper right (pic 1)
- 2.The system automatically determines your country / area.You can also select your country code by yourself.Enter the cellphone number/E-mail and tap "Next" (pic 2)
- 3.If you enter the mobile cellphone number , enter the verification code in the message (pic 3) , and enterthe password, tap"Confirm" to finish your registration.
- 4.If you enter the E-mail, enter the password (pic 4) , tap" Confirm" to finish your registration.

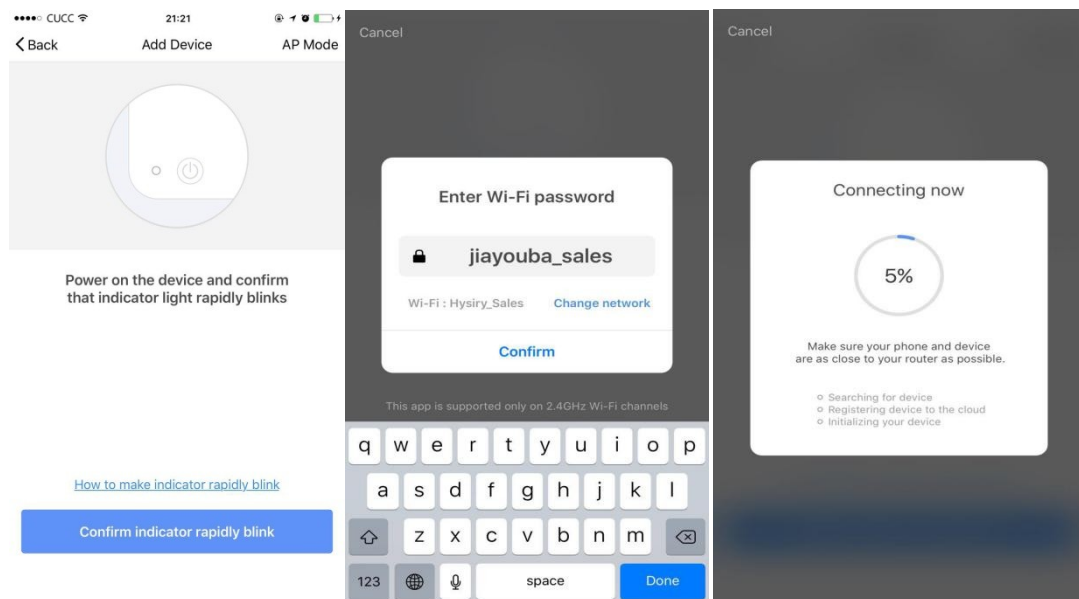


Make sure your phone is connected to WiFi in your home. Click "+" in the upper right corner of the homepage and select "Electrical outlet" from the device type.

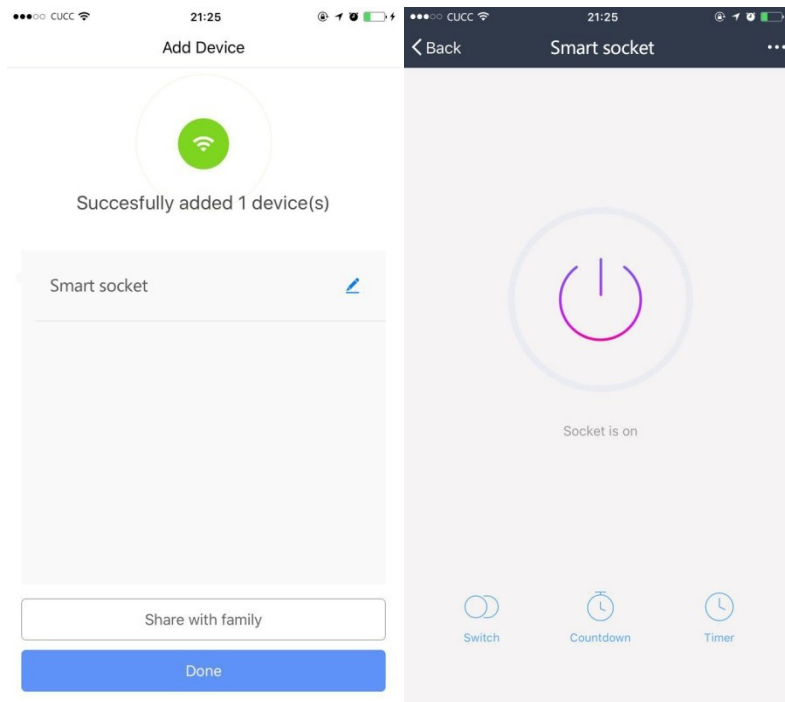


Step 2: Connect with the power supply, long press the power button more than 5 seconds until the blue indicator enters into the fast flash mode. Select confirm indicator rapidly blinks.

Step 3: Enter your WiFi password for your phone and click "Confirm" to enter the page of the search device.

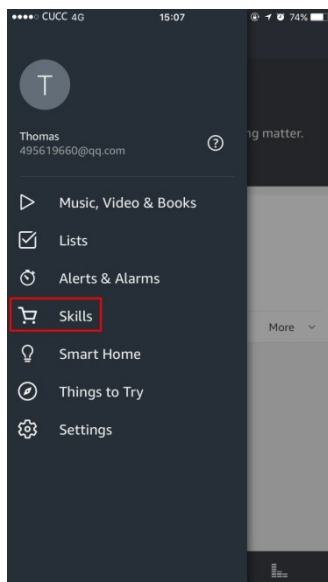


Step 4: Enter the device page, then complete the configuration

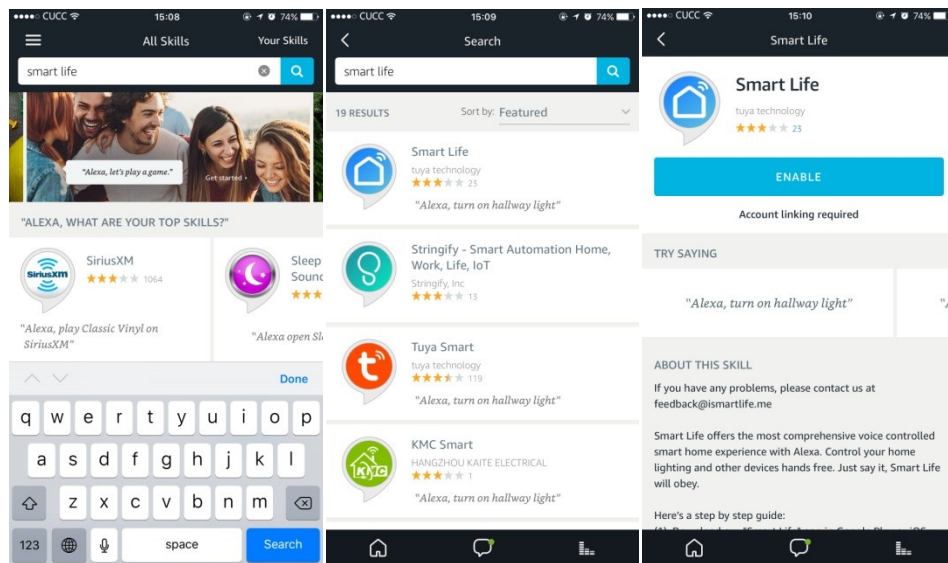


How to use Amazon Echo to control your Smart devices?

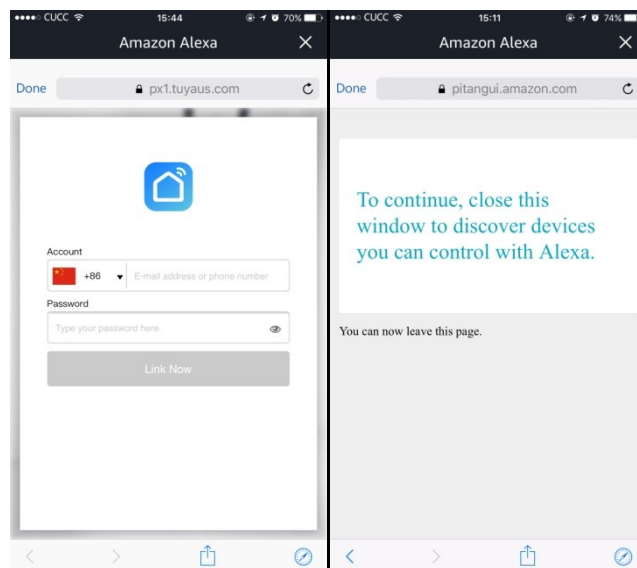
Step 1: Open the "AmazonAlexa"APP,then find the "Skills "button on the menu.Press it.



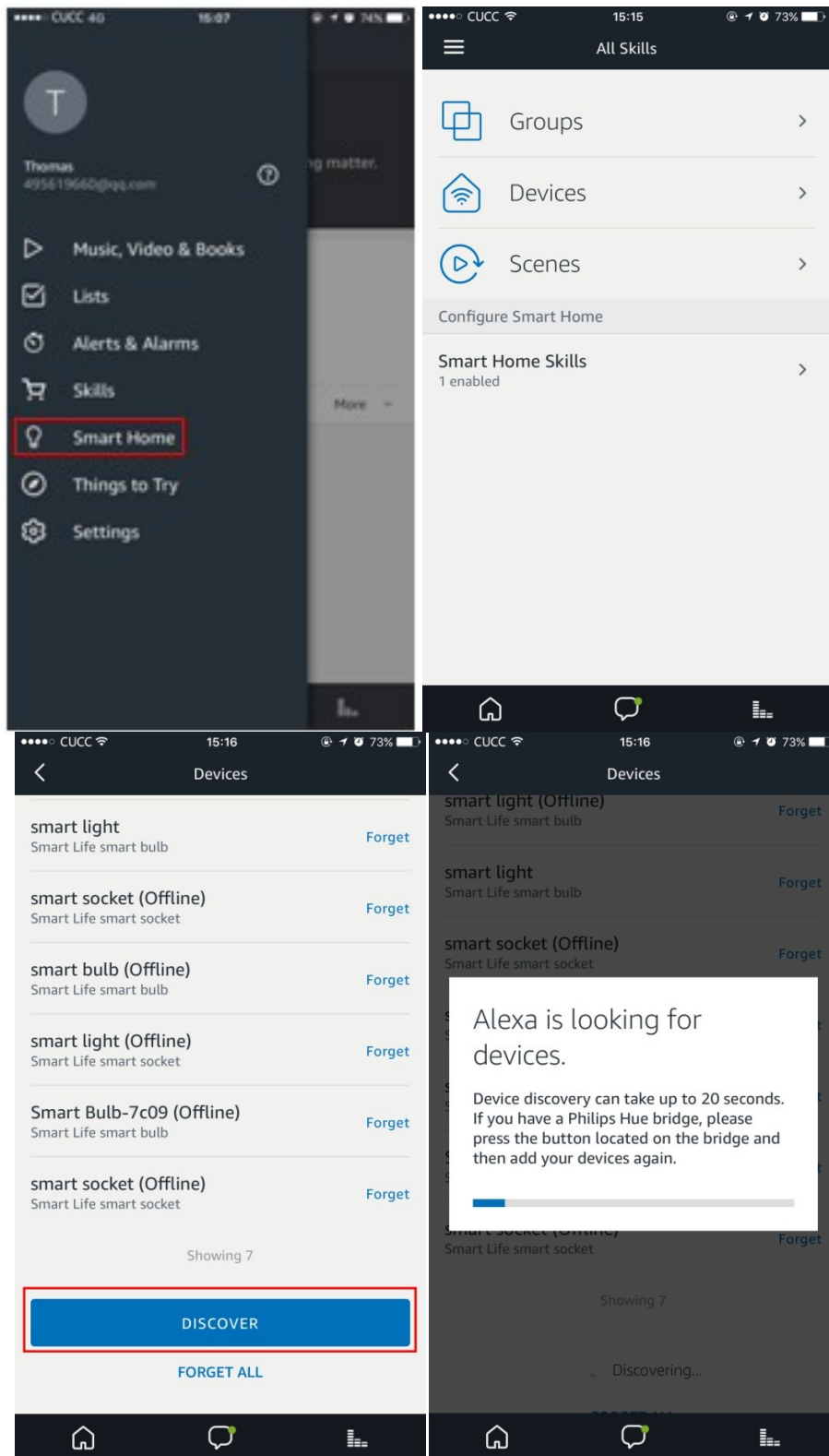
Step 2: Search the "Smartlife" and choose the first one, then Enable it.



Step 3: Select your country code and Enter your "Smart life" APP Account and Password, then press the "Link Now" button. When the Account success to login press the "Done" button.



Step 4: Back to the menu, and press the "Smart home" button, then choose the "Devices", then press the "Discover" button.



Step 5: Now you can use your Alexa to control your Smart devices, enjoy yourself.

FCC Caution:

This device complies with part 15 of the FCC Rules. Operation is subject to the following two conditions: (1) This device may not cause harmful interference, and (2) this device must accept any interference received, including interference that may cause undesired operation.

Any Changes or modifications not expressly approved by the party responsible for compliance could void the user's authority to operate the equipment.

Note: This equipment has been tested and found to comply with the limits for a Class B digital device, pursuant to part 15 of the FCC Rules. These limits are designed to provide reasonable protection against harmful interference in a residential installation. This equipment generates uses and can radiate radio frequency energy and, if not installed and used in accordance with the instructions, may cause harmful interference to radio communications. However, there is no guarantee that interference will not occur in a particular installation. If this equipment does cause harmful interference to radio or television reception, which can be determined by turning the equipment off and on, the user is encouraged to try to correct the interference by one or more of the following measures:

- Reorient or relocate the receiving antenna.
- Increase the separation between the equipment and receiver.
- Connect the equipment into an outlet on a circuit different from that to which the receiver is connected.
- Consult the dealer or an experienced radio/TV technician for help.

This equipment complies with FCC radiation exposure limits set forth for an uncontrolled environment. This equipment should be installed and operated with minimum distance 20cm between the radiator & your body.