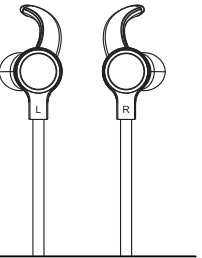


# BT215 Manual Bluetooth Earphones

To assure the finest performance, please read this user's manual carefully. keep it in a safe place for future reference.



- ★ Item: SI-505B
- ★ Bluetooth version: V4.2
- ★ Battery capacity: 90mAh
- ★ Music time: 5 - 6 hours
- ★ Driver diameter: 9mm
- ★ Operation distance: 8-10m
- ★ Impedance: 16Ω±15%
- ★ Sensitivity: 94dB±3dB

## Power on/Pairing/Power off

1. Long press the power button for about 3 seconds, hearing the alert tone "power on" and the LED blue light flash for 2 seconds, it means the bluetooth earphone is worked.

2. Long press the power button for about 5 seconds, hearing the alert tone "Power on" and "Pairing", it means it is in the pairing mode. Then turn on the Bluetooth function of the phone or other device, and connect the bluetooth signal named "Right ③", hearing the alert tone "Connected", it means it is paired successfully.

3. Long press the power button for about 3 seconds, hearing the alert tone "power off" and the LED red light flash for 2 seconds, it means the bluetooth earphone is turned off.

## Controls

### 1.Call :

Short press : Answer/Hang up  
Long press for 2 seconds : Reject a call

### 2.Music :

Short press : Play/Pause (Music player is working)

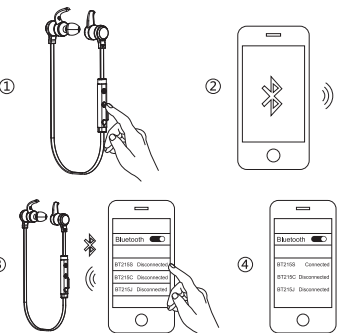
### 3.Long press for 3 seconds : Power on/off



Click : Next song  
Long press : VOL+

Click : Previous song  
Long press : VOL-

English/Chinese language switching : When it is in the pairing mode, double-click the power button, it can switch English/Chinese language.



Note: Take the name searched as the standard

## FCC Statement

Changes or modifications not expressly approved by the party responsible for compliance could void the user's authority to operate the equipment.

This equipment has been tested and found to comply with the limits for a Class B digital device, pursuant to Part 15 of the FCC Rules. These limits are designed to provide reasonable protection against harmful interference in a residential installation. This equipment generates uses and can radiate radio frequency energy and, if not installed and used in accordance with the

instructions, may cause harmful interference to radio communications. However, there is no guarantee that interference will not occur in a particular installation. If this equipment does cause harmful interference to radio or television reception, which can be determined by turning the equipment off and on, the user is encouraged to try to correct the interference by one or more of the following measures:

- Reorient or relocate the receiving antenna.
- Increase the separation between the equipment and receiver.
- Connect the equipment into an outlet on a circuit different from that to which the receiver is connected.
- Consult the dealer or an experienced radio/TV technician for help

This device complies with part 15 of the FCC rules. Operation is subject to the following two conditions (1) this device may not cause harmful interference, and (2) this device must accept any interference received, including interference that may cause undesired operation.



## Dongguan Goldstep Electronics Co.,LTD

Address: Puxin Industrial Zone, Shipai Town,  
Dongguan City, Guangdong, China  
Tel: 0769-81379315 / 81379316  
Fax: 0769-86521200