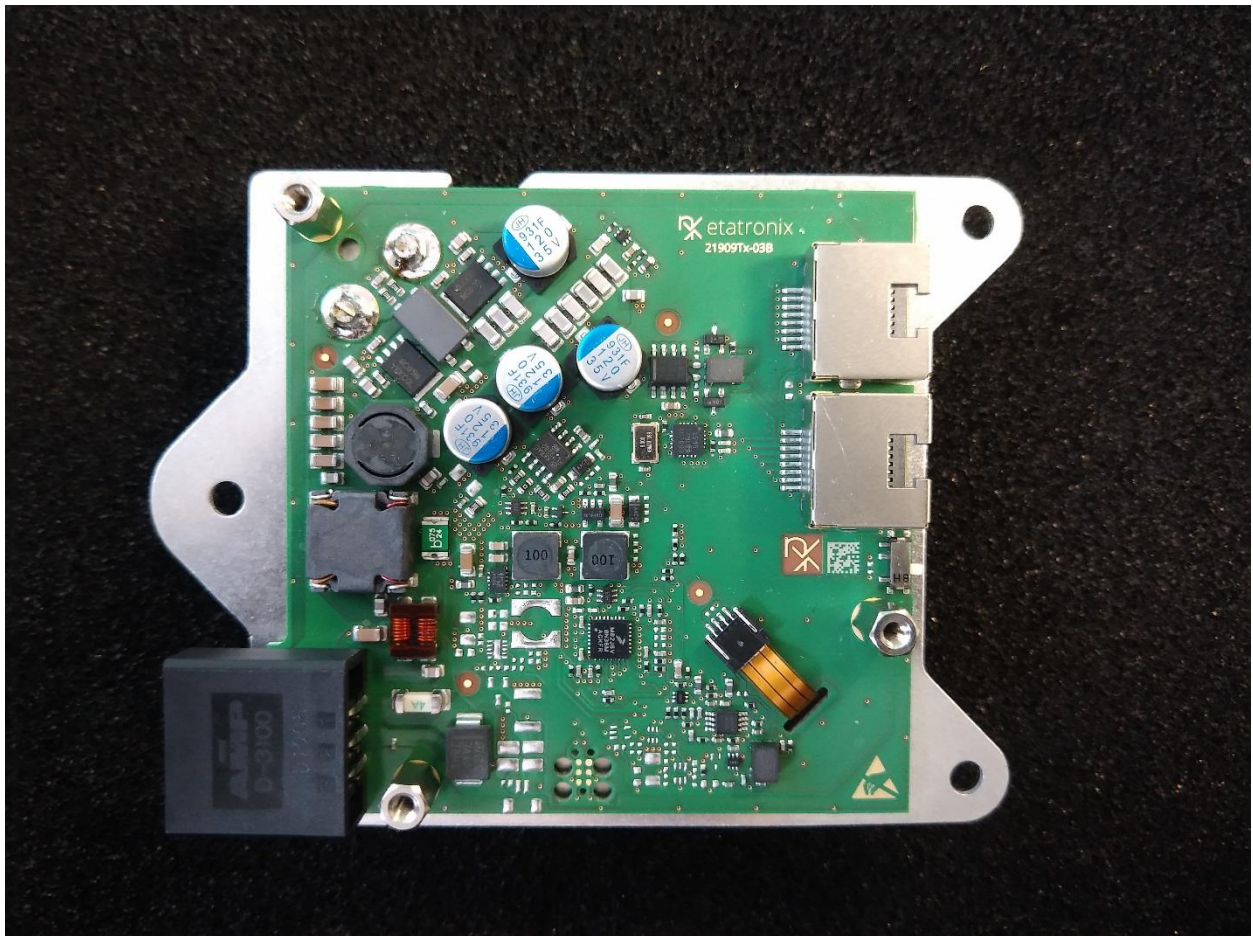


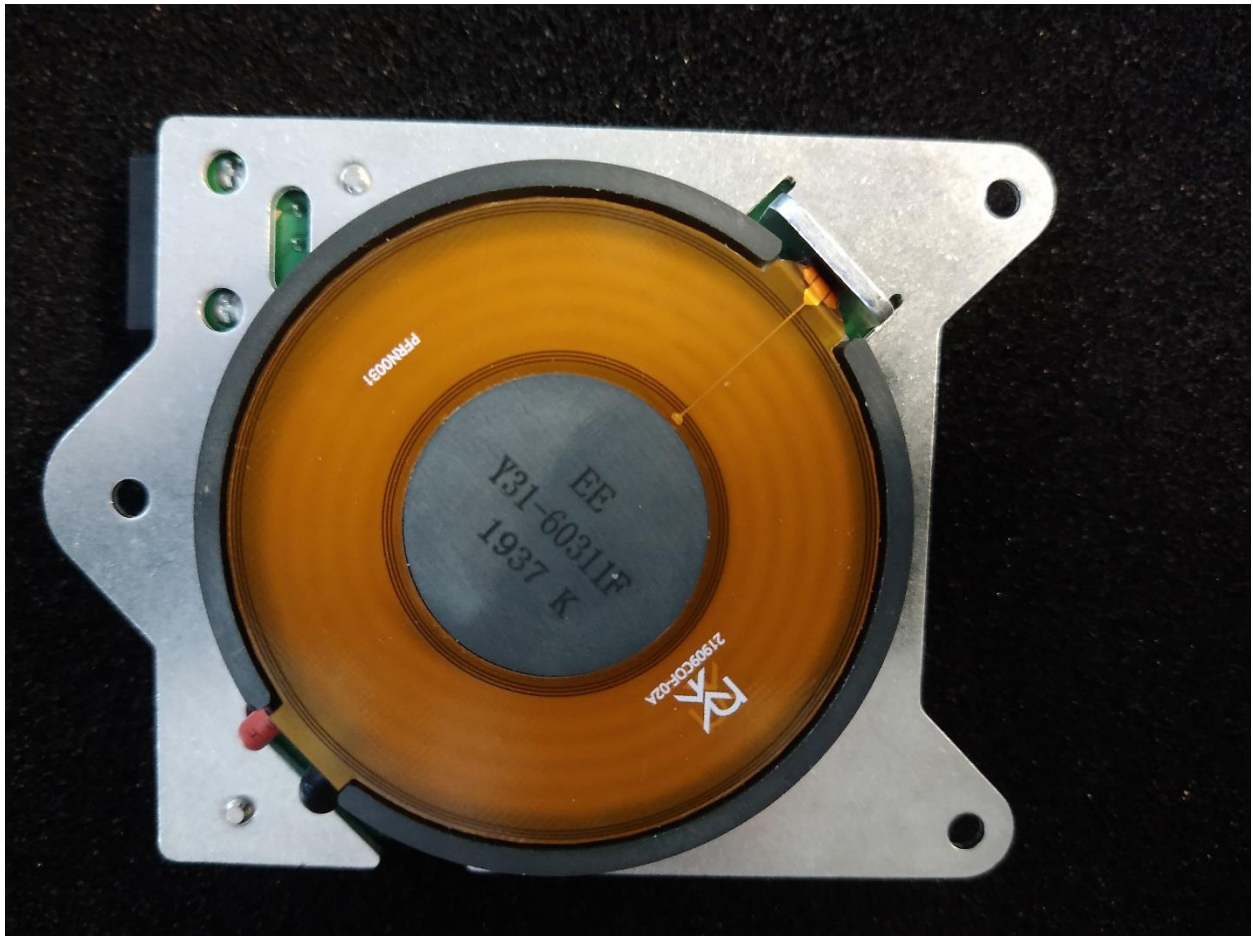
Internal Photos

Transmitter

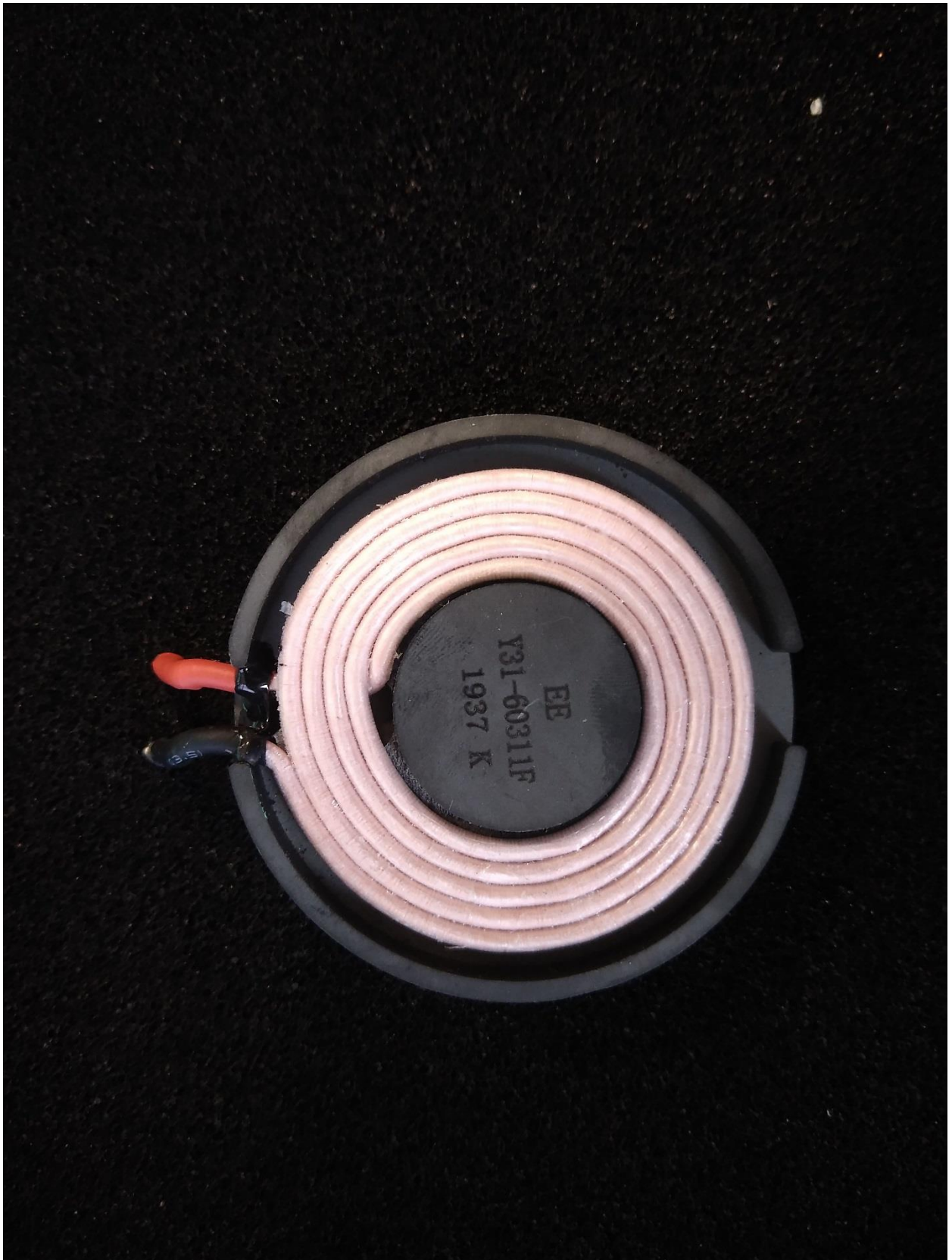
The following picture shows the Top View of the PCB:



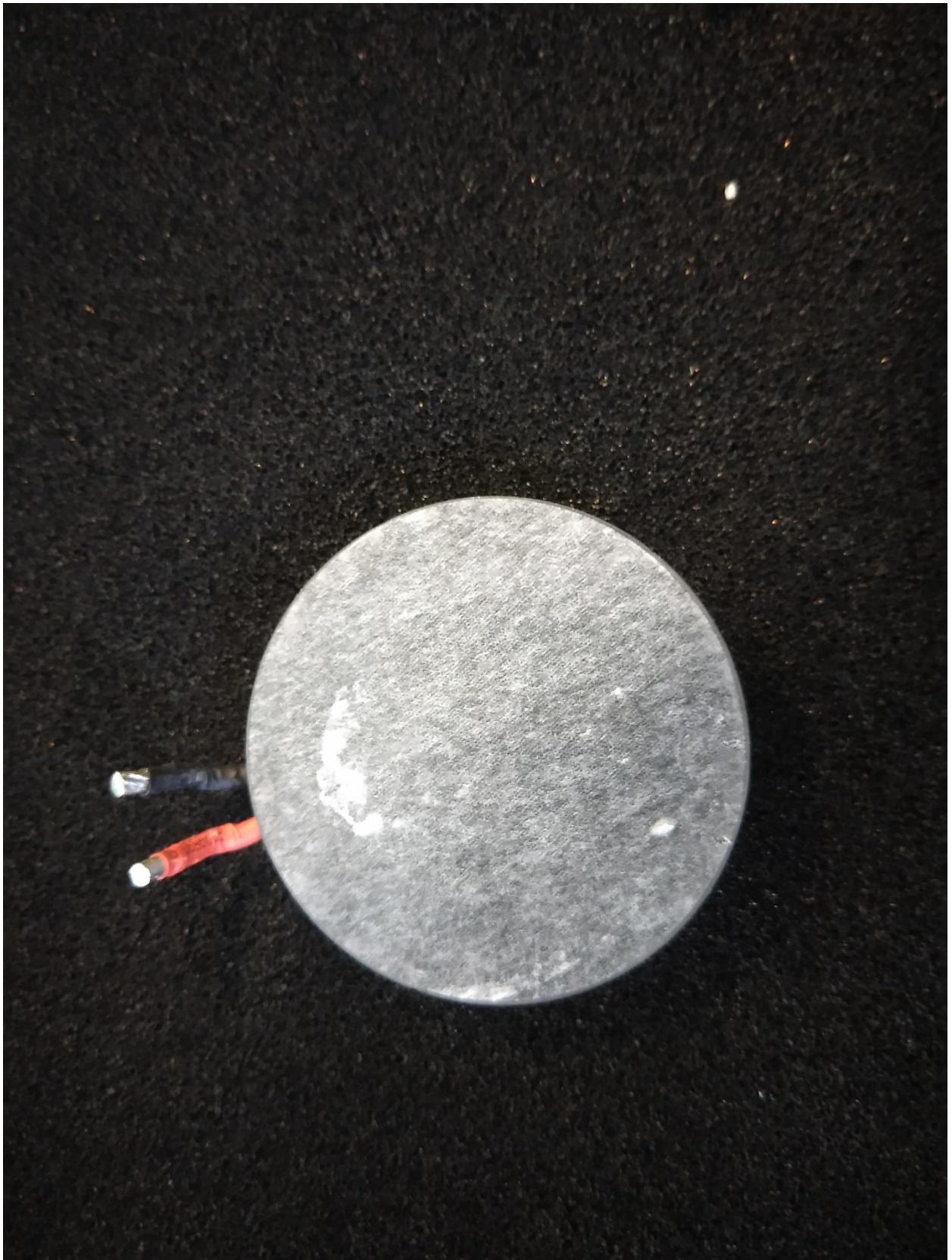
The following picture shows the Top View of the Power Coil with Data Coil:



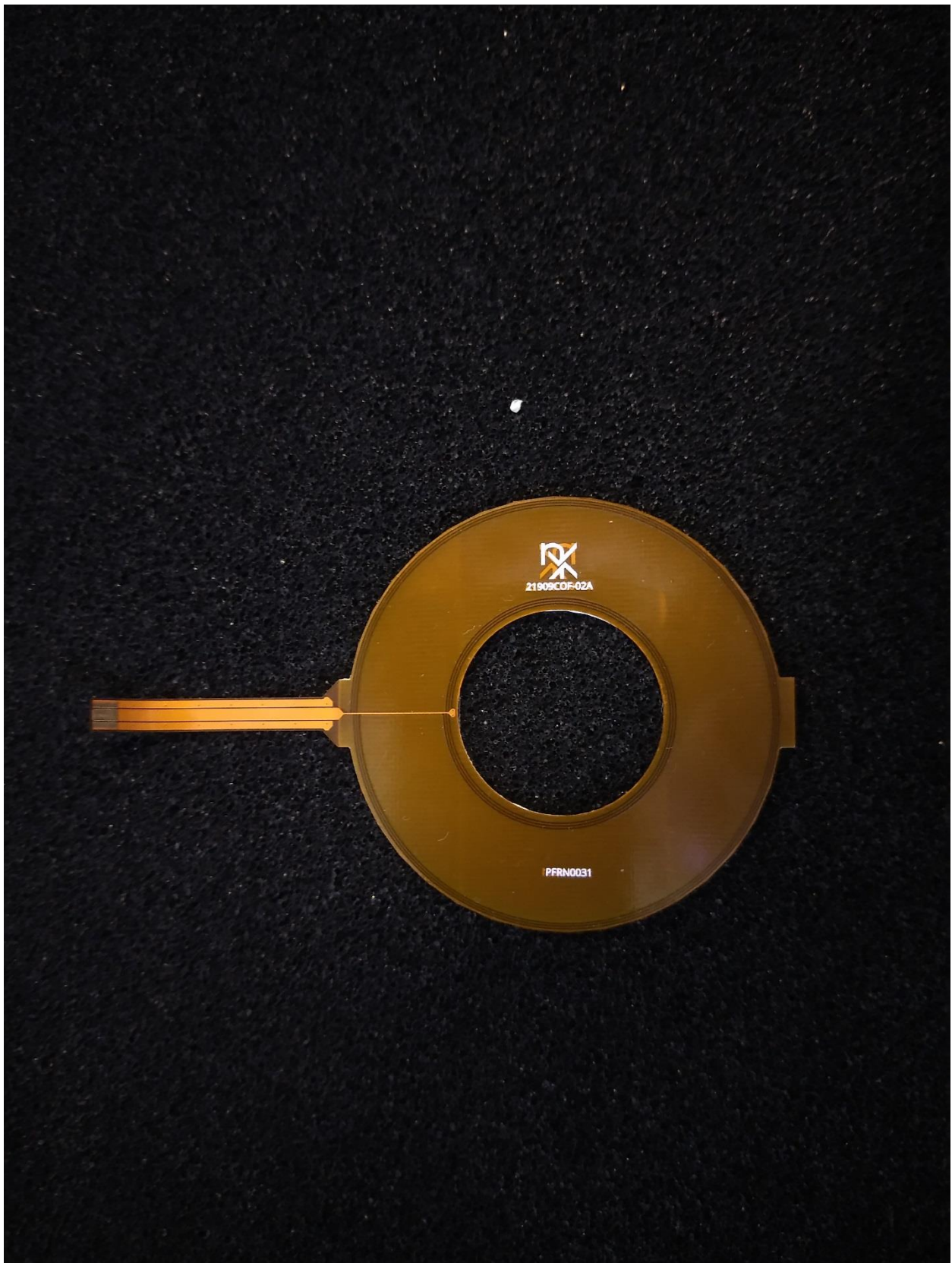
The following picture shows the Top View of the Power Coil:



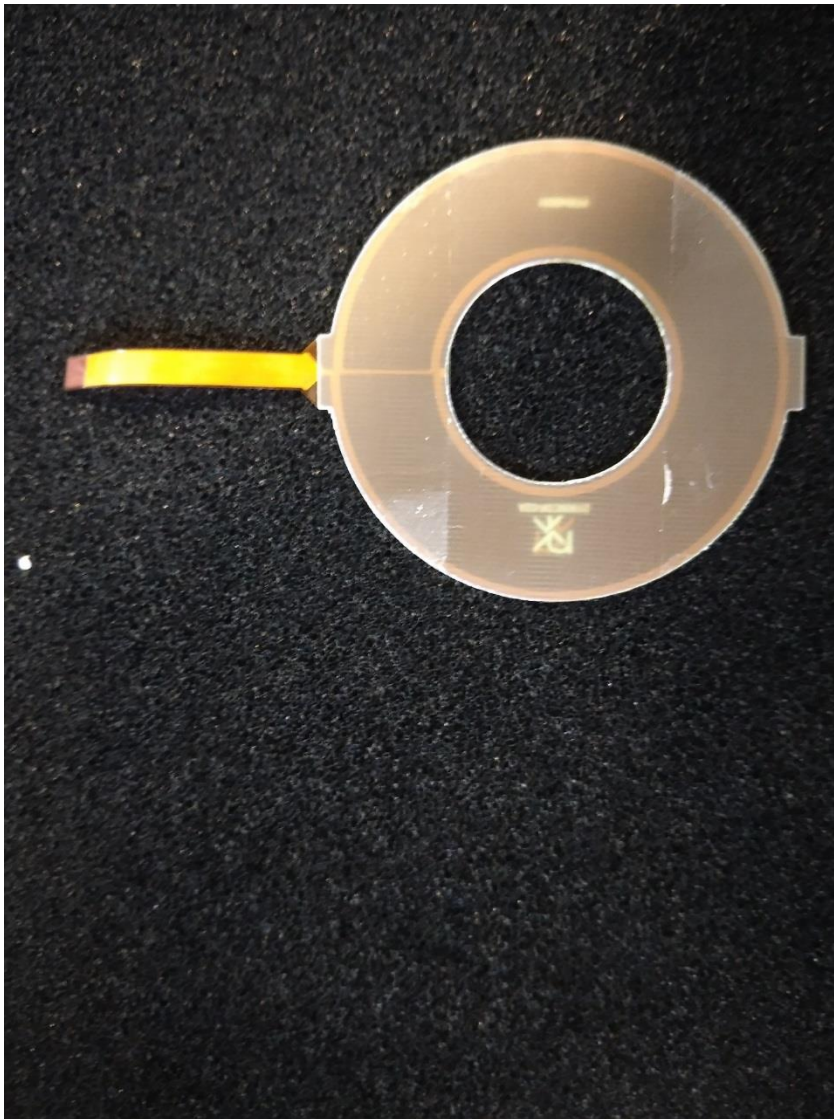
The following picture shows the Bottom View of the Power Coil:



The following picture shows the Top View of the Data Coil:

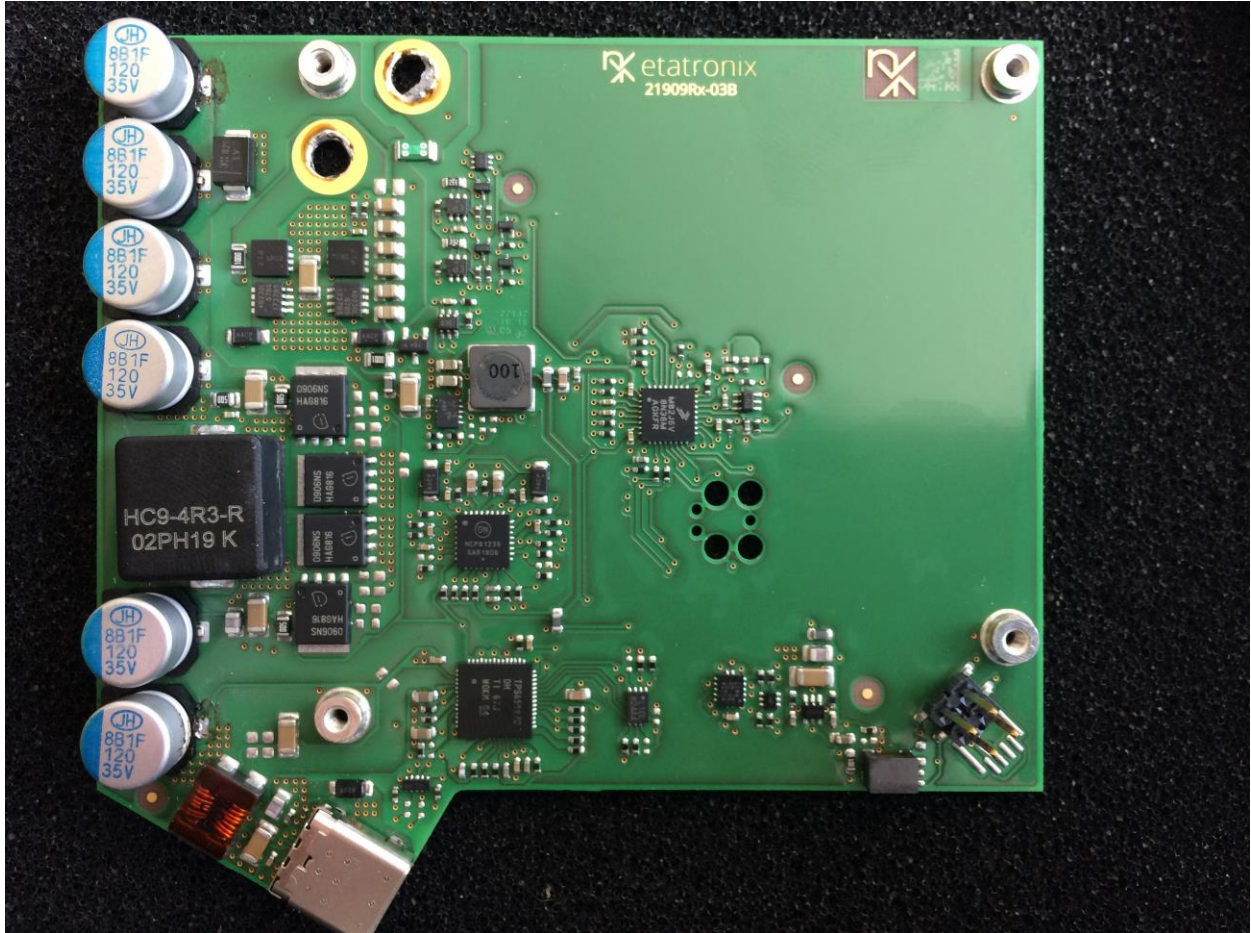


The following picture shows the Bottom View of the Data Coil:

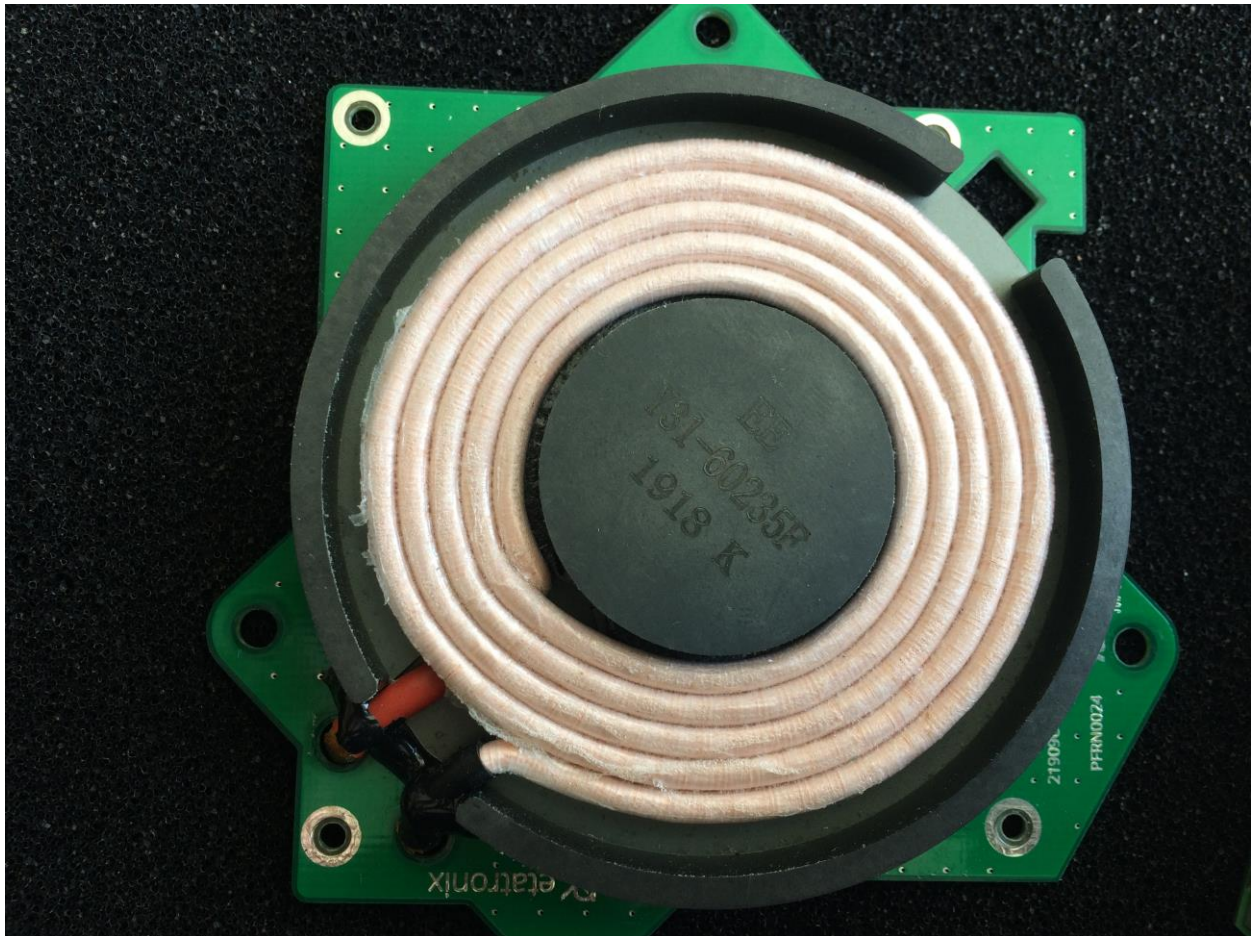


Receiver

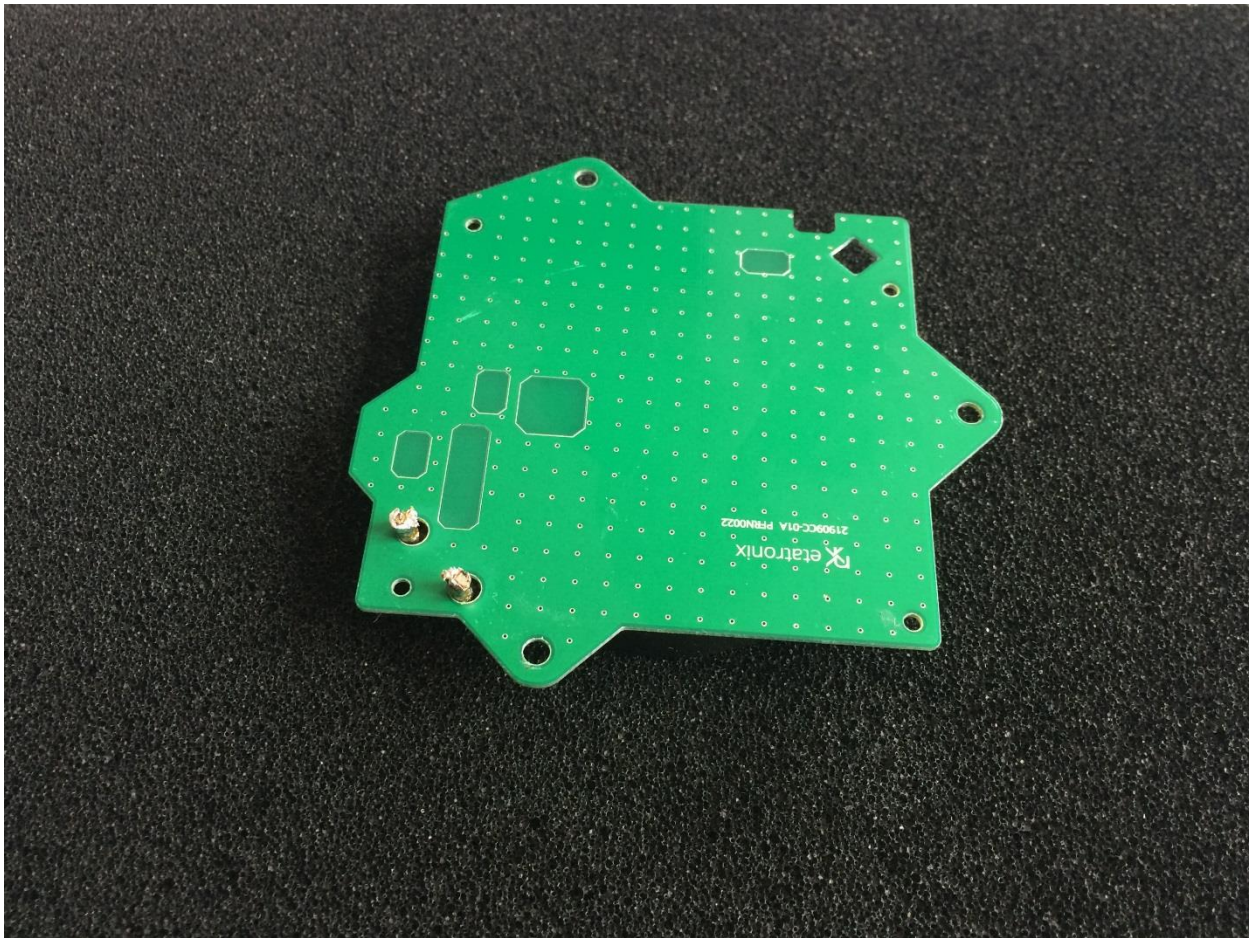
The following picture shows the Top View of the PCB without coils attached:



The following picture shows the Top View of the Power Coil:



The following picture shows the Bottom View of the Power Coil:



The following picture shows the Top View of the Data Coil:



The following picture shows the Bottom View of the Data Coil:

