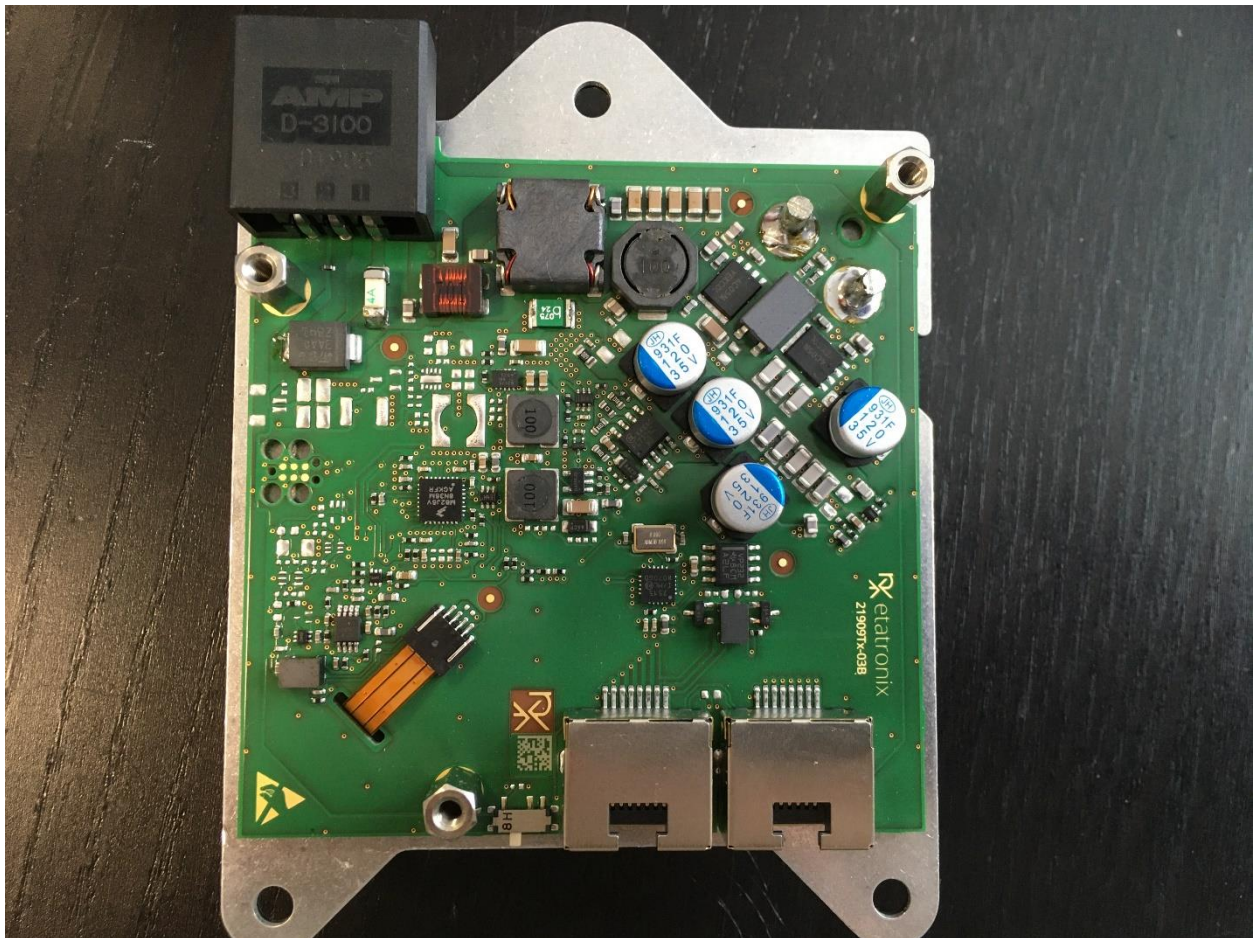


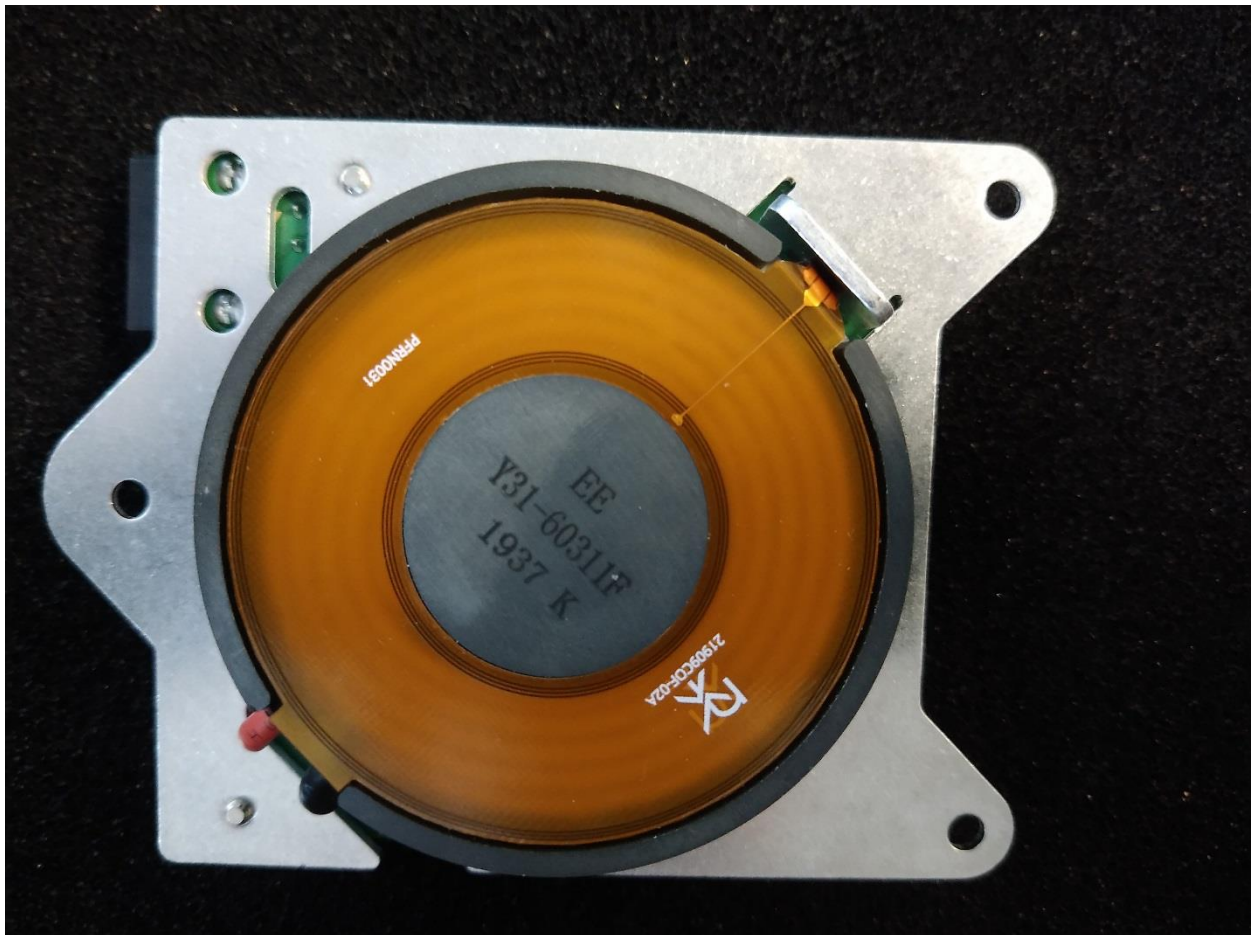
# Internal Photos

## Transmitter

The following picture shows the Top View of the PCB:



The following picture shows the Top View of the Power Coil with Data Coil:

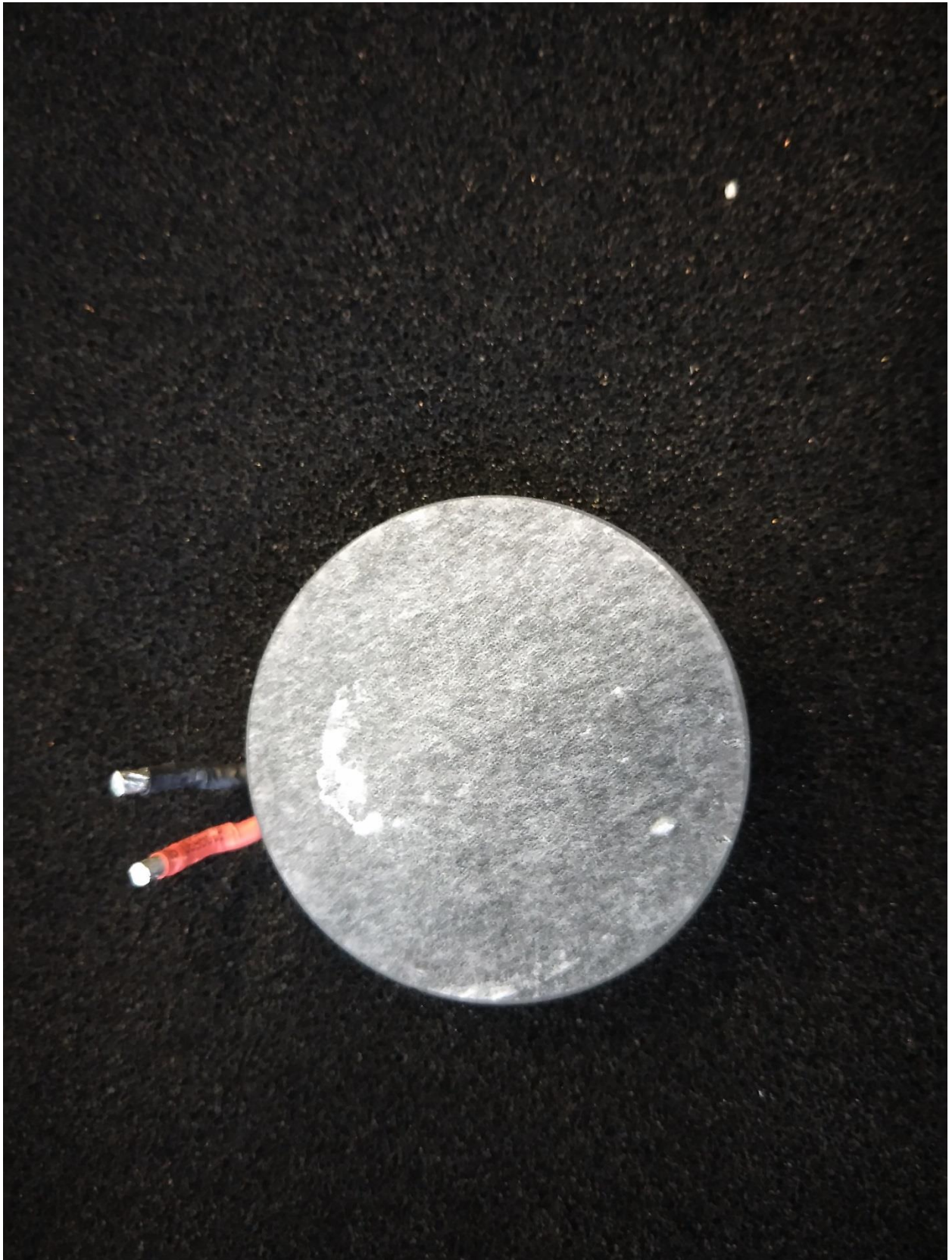




The following picture shows the Top View of the Power Coil:

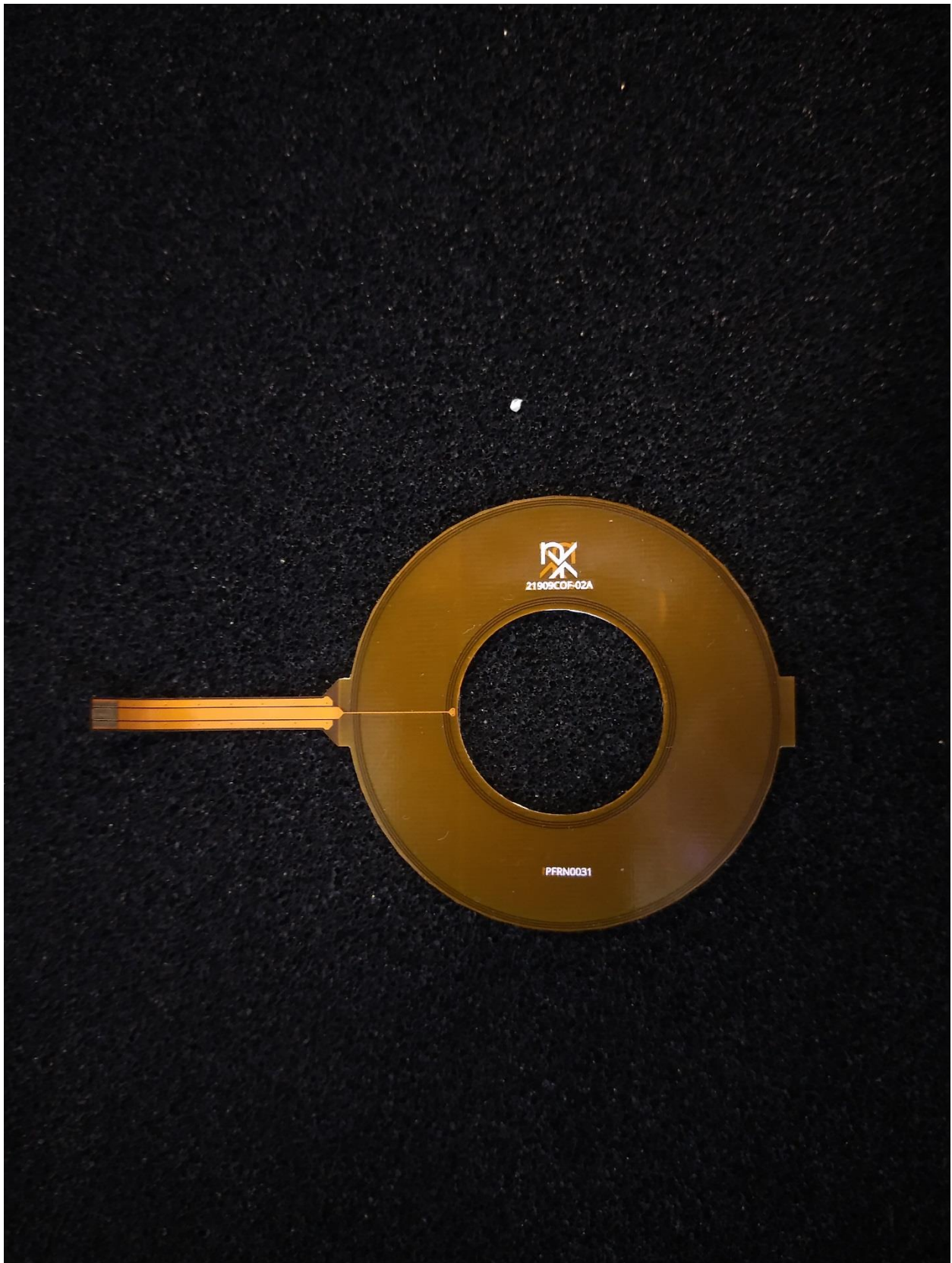


The following picture shows the Bottom View of the Power Coil:

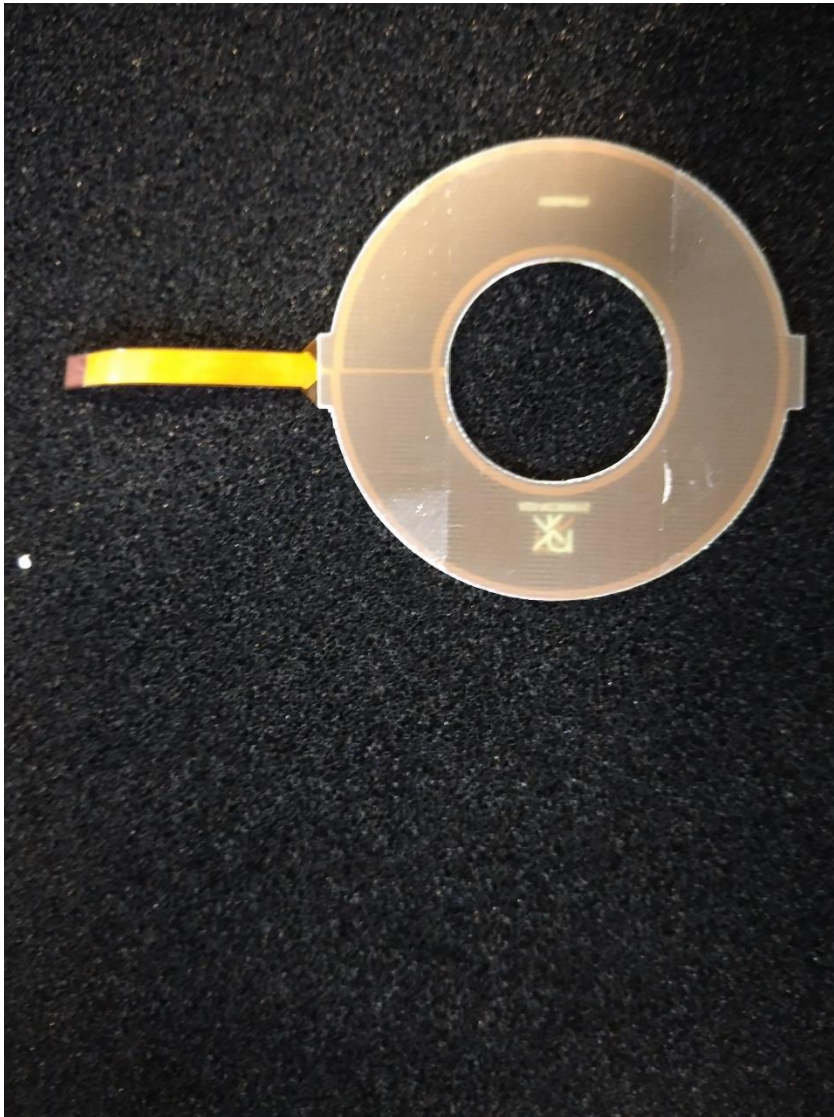




The following picture shows the Top View of the Data Coil:



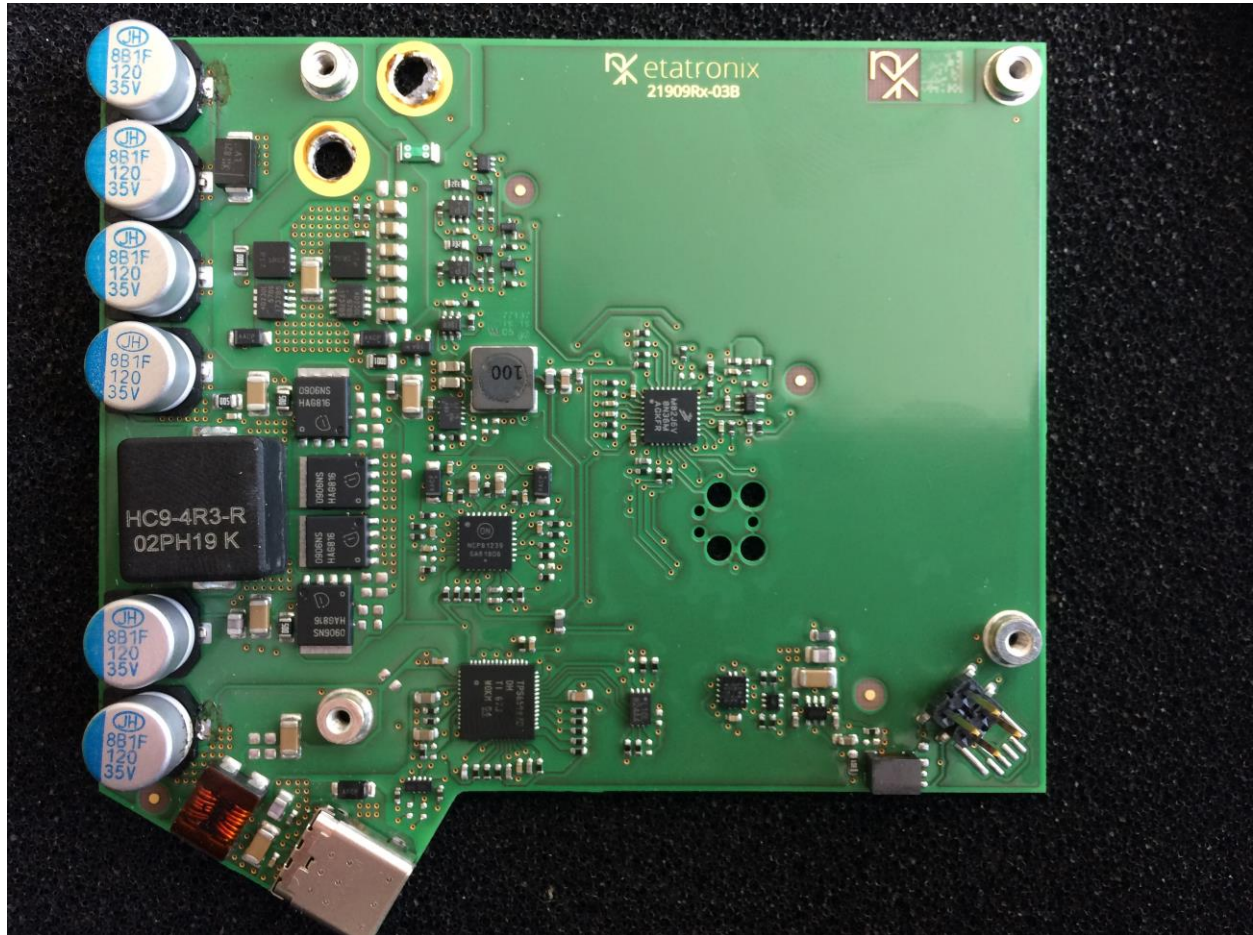
The following picture shows the Bottom View of the Data Coil:



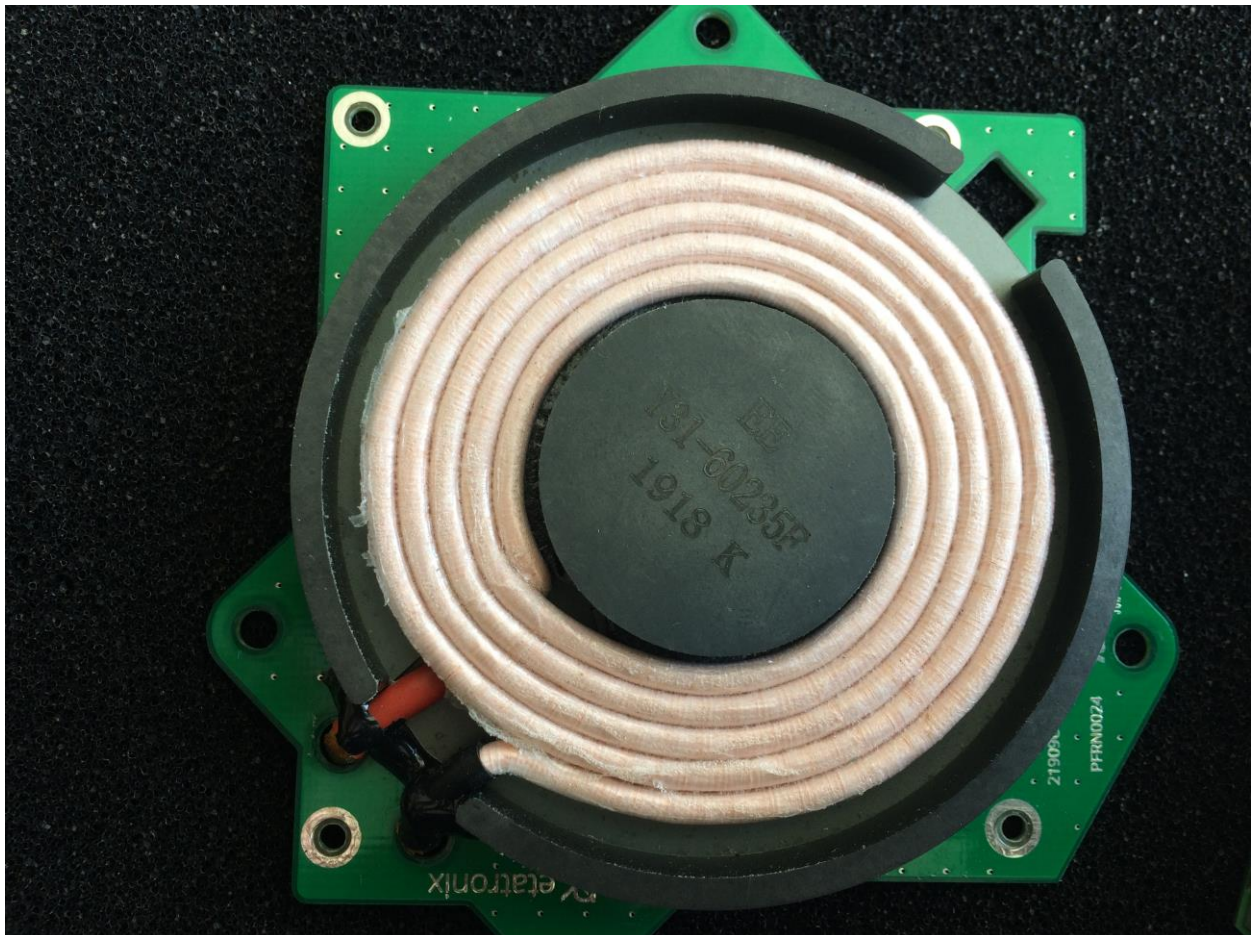


## Receiver

The following picture shows the Top View of the PCB without coils attached:

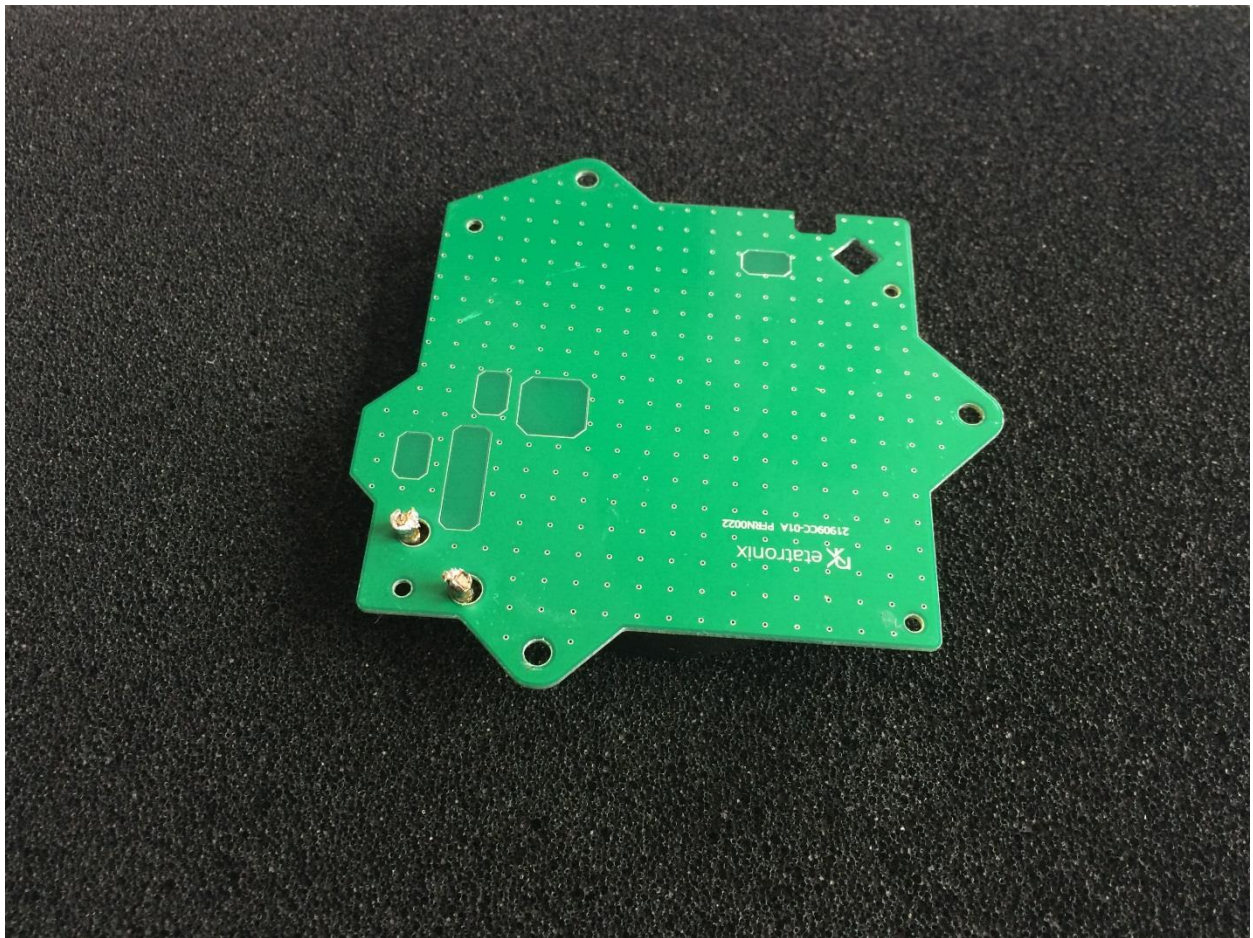


The following picture shows the Top View of the Power Coil:





The following picture shows the Bottom View of the Power Coil:



The following picture shows the Top View of the Data Coil:





The following picture shows the Bottom View of the Data Coil:

