

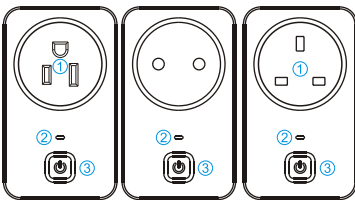
## Wi-Fi Smart Socket

# User Manual



### ●PRODUCT OVERVIEW

WIFI smart socket works through WIFI, by which you can remote control your home appliances in your mobile phones. This product supports tasks, the countdown, real-time two-way feedback, etc. If you want to use the voice control, you can connect the socket to the Amazon Echo or Echo Dot. Once the configuration is completed, you can use it.



- ① ——— Alexa-Compatible Outlet
- ② ——— Indicator Light
- ③ ——— Main Switch

- 1 -

### ●PREPARATIONS

1. Scan the QR code below, download and install "Smart Life" on your phone. You can also download "Smart Life" App from App Store or Google Play and install it on your phone.



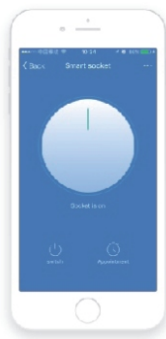
2. Make sure your phone is connected to your home WIFI network (2.4GHz).  
3. Plug the WIFI smart outlets into power socket, you can see the red LED in a flash state, if there is no flash, please press the button for about 5 seconds to restore the factory settings.

### ●ADD DEVICES TO SMART LIFE APP

1. Open the "Smart Life" App, click "+", and select "Electrical outlet", now your mobile phone is connected with your WIFI Smart Socket.  
2. Leave "Smart Life" and jump to the device control interface, click "...", to manage the device, such as: modify the name, check the firmware update and restore factory settings.

- 2 -

3. Go to the "Scenes" page, click "+" on the top right corner to add scene. Enter the scene name, and then add the requirements to perform a single or multiple tasks. It can be saved as a key management device.



4. Enter 'Profile', select 'Device Sharing', you can share device to family members or friends, you can also accept other users' device sharing at the same time.

- 3 -

### ●Quick Guide of Using Amazon Echo to Control Smart Devices

#### 1. What you need to get started

Before using Echo to control your smart devices, make sure you meet the following conditions:

Stable Wi-Fi network which could access to Amazon server. (For mainland China users)  
An Echo device, including Echo, Echo Tap, or Echo Dot.  
An Amazon account.  
Smart Life app and a related account.

Smart devices.

You can skip this part if you've already add some devices to your Smart Life account, and in the meantime the devices' name are easily recognized.

#### 2.1 Download Smart Life app (Refer to App Instruction)

You can scan the QR code below to download the Smart Life app.  
You can also search "Smart Life" in either App Store or Google Play to install the app.

2.2 Register a Smart Life account and sign in the app (Refer to App Instruction)

Open the Smart Life app, tap "Register" to register an account, then sign in the app.

2.3 Add device and change device's name (Refer to App Instruction)  
Sign in with the Smart Life account, add the device, then change device name to a easily recognized word or phrase, like "bedroom light".

- 4 -

#### 3. Set up Amazon Echo and enable Smart Life Skill

We suggest using web for configuration in mainland China since Alexa app is not available here.

User can configure Echo through web or Alexa app.

Web configuration link:

<http://alexa.amazon.com/spa/index.html>

We take app configuration as an example.

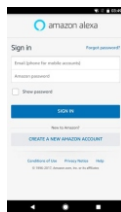
Configuration through web and app are basically the same.

Search "Amazon Alexa" in App Store or Google Play to install the app.

3.1 Set up Echo with Alexa app

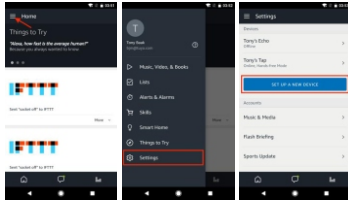
You can skip this part if your Echo is already set up.

1. Make sure your Echo device is energized.  
2. Open the Alexa app by tapping the app icon on your mobile device.  
3. Type in your Amazon account and password, then tap "SIGN IN".

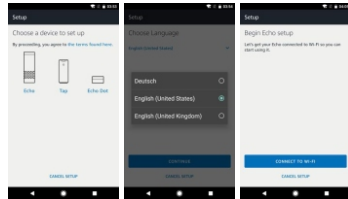


4. Tap the hamburger menu on the top left corner, select "Settings", then tap "SET UP A NEW DEVICE".

- 5 -

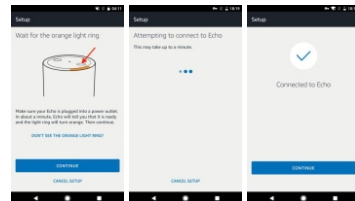


5. Select your Echo model, choose a proper language, then tap "CONNECT TO WI-FI".

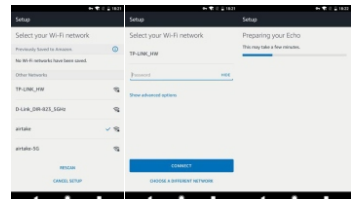


6. Long press the dot button on the top of your Echo device until the orange light shows up, then tap "CONTINUE". When your phone is connected to Echo, tap "CONTINUE".

- 6 -

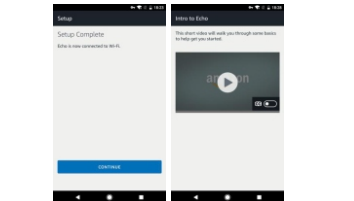


7. Select a Wi-Fi to let Echo have the access to the internet. Type in the Wi-Fi password, then tap "CONNECT". Echo may take several minutes to connect the network.



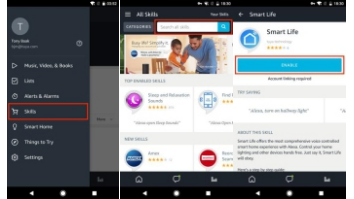
8. Tap "CONTINUE" when Echo is connected to the network. After an introduction video, tap "CONTINUE" to finish the setup.

- 7 -



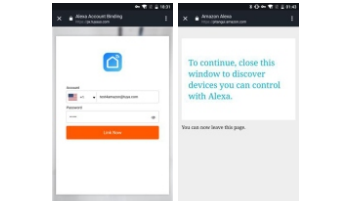
3.2 Link Smart Life account to Alexa

1. Tap "Skills" in the hamburger menu, then search "Smart Life". Select "Smart Life" and tap "ENABLE" to enable the Skill.



2. You will be redirected to the account link page. Type in your Smart Life account and password, don't forget to select the country/region where your account belongs to. Then tap "Link Now" to link your Smart Life account. The Country/Region, the account, and the password must match with the exact content in Step 2.2.

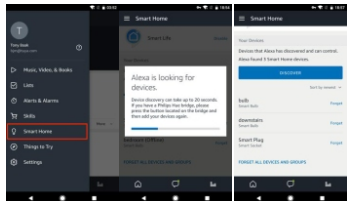
- 8 -



4. Control your smart devices through Echo

#### 4.1 Discover devices

Echo needs to discover your smart devices before it controls them. You can say "Alexa, discover devices" to Echo. Echo will discover devices which have already been added in the Smart Life app. You can also tap "DISCOVER" to discover the smart devices. Discovered devices will be shown in the list.



- 9 -

Note:every time you change the device's name on Smart Life app,Echo must re-discover before you control them.

#### 4.2 Control devices by voice commands

Now you can control your smart devices through Echo. You can use the following commands to control your devices (e.g., bedroom light):

- Alexa, turn on/off bedroom light.
- Alexa, set bedroom light to 50 percent.
- Alexa, brighten/dim bedroom light.
- Alexa, set bedroom light to green.
- Alexa, set bedroom light to warm white.
- Alexa, set air conditioner to 24°C.

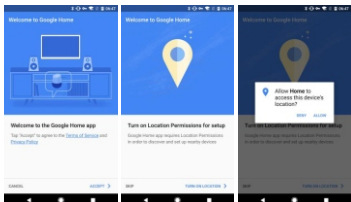
-10-

### ●Set up Google Home and configure in Home Control

Configuration needs Google Home app. Search "Google Home" in App Store or Google Play to install the app.

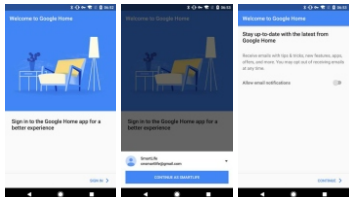
1. Set up Google Home with Google Home app  
You can skip this part if your Google Home is already set up.

1.1 Make sure your Google Home is energized.  
1.2 Open the Google Home app by tapping the app icon on your mobile device.  
1.3 Tap "ACCEPT" to agree to the Terms of Service and Privacy Policy. Allow Google

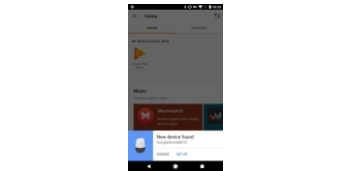


Home app to access the device location to discover and set up nearby devices.  
1.4 Tap "SIGN IN", choose one Google account that you already logged in on your mobile device. Or follow the instructions to sign in with a new Google account.

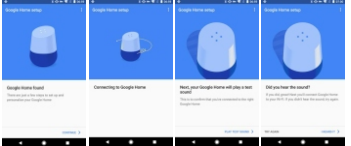
-11-



1.5 The Google Home app scans nearby devices that are energized and are ready to set up. Tap "SET UP" to set up your Google Home.



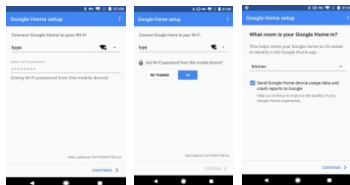
1.6 When Google Home app is successfully connected to the Google Home device, tap "PLAY TEST SOUND".



-12-

it will play a test sound to confirm you are connected to the right device.If you heard the test sound, tap "I HEARD IT".

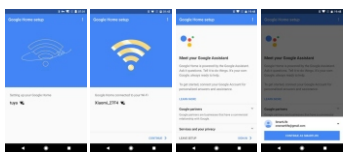
1.7 Select the Room (ex Living Room) where your Google Home is located. This helps you identify the device when you want to cast to it. Choose the Wi-Fi network you want to connect to your Google Home. To automatically fetch the password for this network on this device, tap "OK", then the password will populate in the password



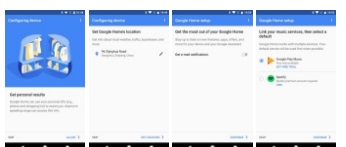
field. You can also manually enter your password. Then tap "CONTINUE".

1.8 Google Home will now attempt to connect to the provided Wi-Fi network. When Google Home is successfully connected to your Wi-Fi network, tap "CONTINUE".

-13-

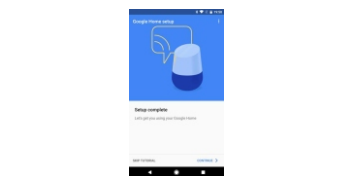


1.9 In order for the Google assistant to answer your questions and to enjoy a personalized experience, you must sign into your Google account, then tap "SIGN UP". Choose the Google account you want to link to your Google Home device, then tap "CONTINUE AS XXX". Enter the address where this Google Home is installed, and select your default music service.



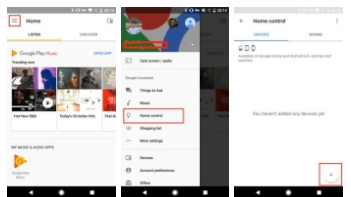
1.10 Tap "SKIP TUTORIAL" to finish the setup. You can also tap "CONTINUE" to watch the Google Home tutorial.

-14-



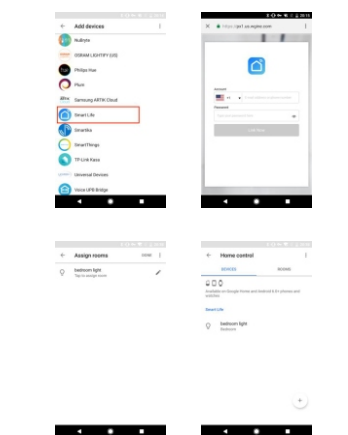
#### 2. Link Smart Life account in Home Control

2.1 Tap "Home Control" in the hamburger menu on the Google Home app's home page, then tap "+".



2.2 Find "Smart Life" in the list. In the new window, select your Smart Life account's region, type your Smart Life account and password, then tap "Link Now". After you assign rooms for devices, your devices will be listed in the Home Control page.

-15-



-16-

#### Create a groupP

1. Click "Create group" to organize your device according to your operation habits.  
2. Name the group and select the devices of your choice, then click 'Save'.You can create a group for a specified devices of your choice, once put them in groups, you can control the devices that's within a group with just one single command instead of individual commands.

#### ●Button Description

\* Short Press: Turn the jack on or off  
\* Long press: Reset the factory settings while waiting for configuration

#### ●LED Status Indication

\* Red Flash: Waiting for configuration  
\* Red Normally On: The configuration is successful and the socket is connected to WIFI  
\* Red Normally Off: The socket is not connected to WIFI  
\* Blue Normally On: Plug power on  
\* Blue Normally Off: Plug power off  
\* Red + Blue On: The socket is connected to WIFI and the jack is energized

#### ●BASIC PARAMETERS

Input Voltage: 125V~ 60Hz (US)  
250V~ 50/60Hz (UK/EU)  
Rated Power:1250W 10A (US), 3250W 13A (UK), 2500W 10A (EU)  
Wireless Type: Wi-Fi 2.4GHz  
Wireless Standard: IEEE 802.11 b/g/n

-17-

#### ●FCC Caution

This device complies with part 15 of the FCC Rules. Operation is subject to the following two conditions: (1) This device may not cause harmful interference, and (2) this device must accept any interference received, including interference that may cause undesired operation.

Any Changes or modifications not expressly approved by the party responsible for compliance could void the user's authority to operate the equipment.

**Note:** This equipment has been tested and found to comply with the limits for a Class B digital device, pursuant to part 15 of the FCC Rules. These limits are designed to provide reasonable protection against harmful interference in a residential installation. This equipment generates uses and can radiate radio frequency energy and, if not installed and used in accordance with the instructions, may cause harmful interference to radio communications. However, there is no guarantee that interference will not occur in a particular installation.If this equipment does cause harmful interference to radio or television reception, which can be determined by turning the equipment off and on, the user is encouraged to try to correct the interference by one or more of the following measures:

-18-

-Reorient or relocate the receiving antenna.  
-Increase the separation between the equipment and receiver.  
-Connect the equipment into an outlet on a circuit different from that to which the receiver is connected.  
-Consult the dealer or an experienced radio/TV technician for help.

\*RF warning for Mobile device:  
This equipment complies with FCC radiation exposure limits set forth for an uncontrolled environment. This equipment should be installed and operated with minimum distance 20cm between the radiator & your body.

-19-