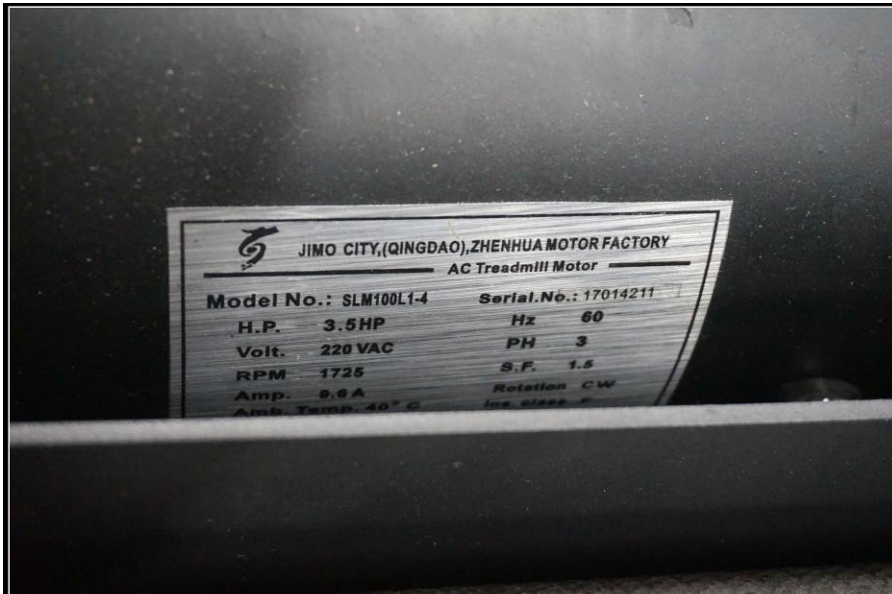
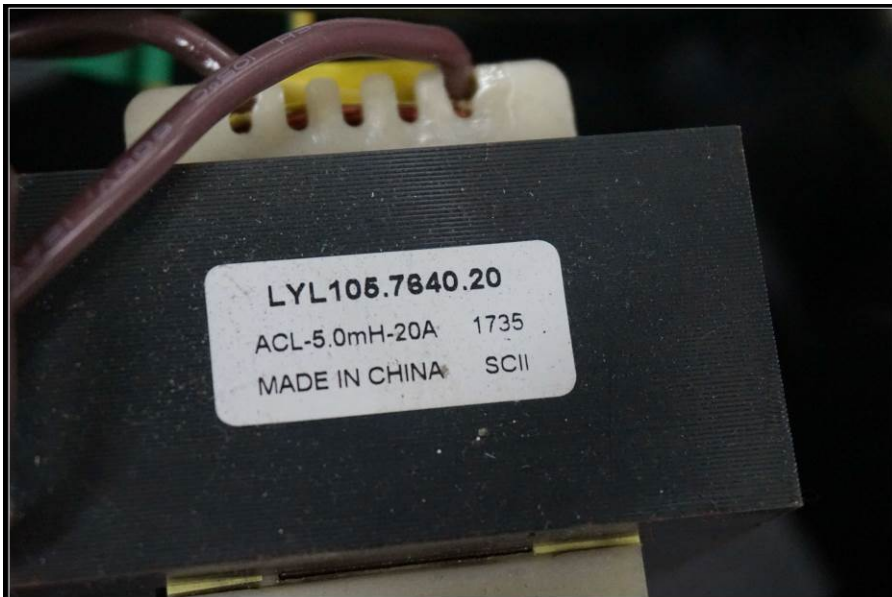


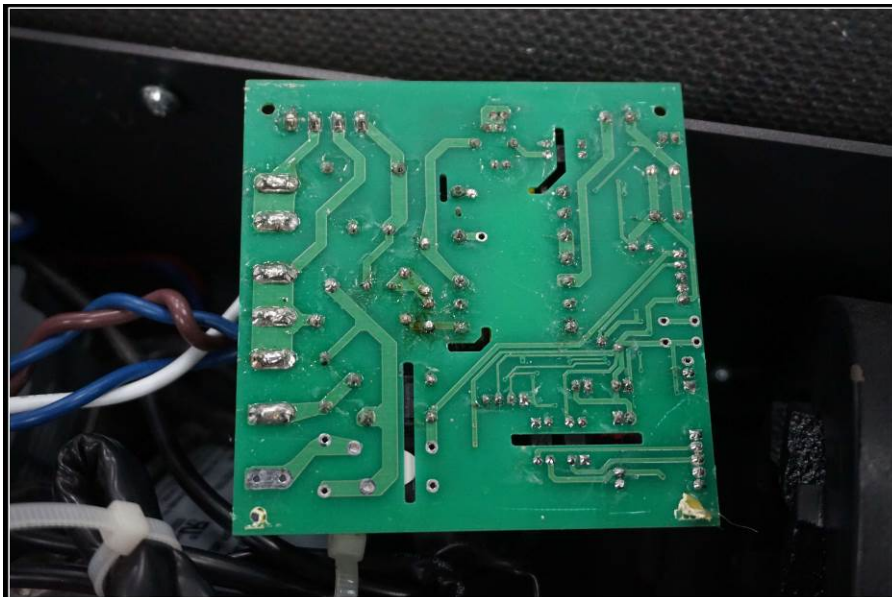
## Internal Photo



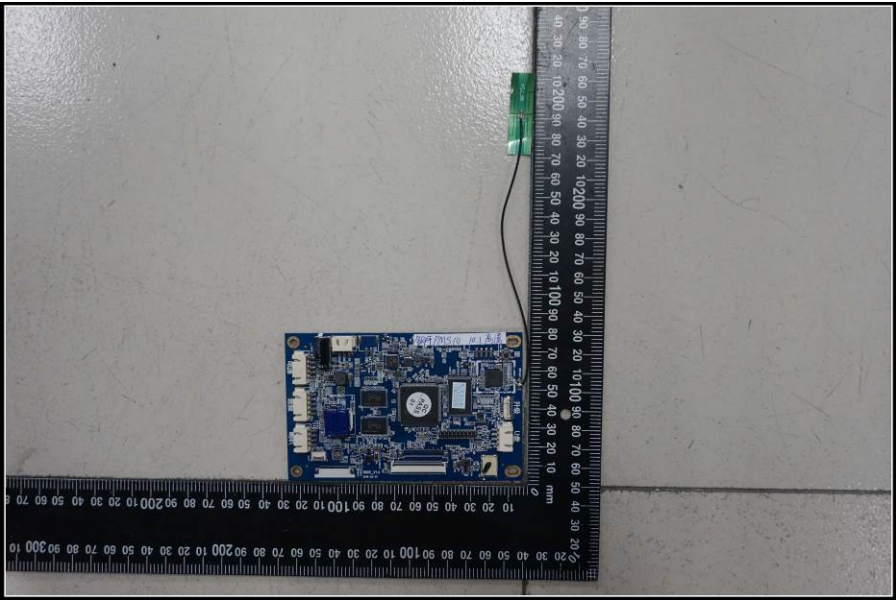
Model No.:PM820 with motor SLM100L1-4(3.5HP)

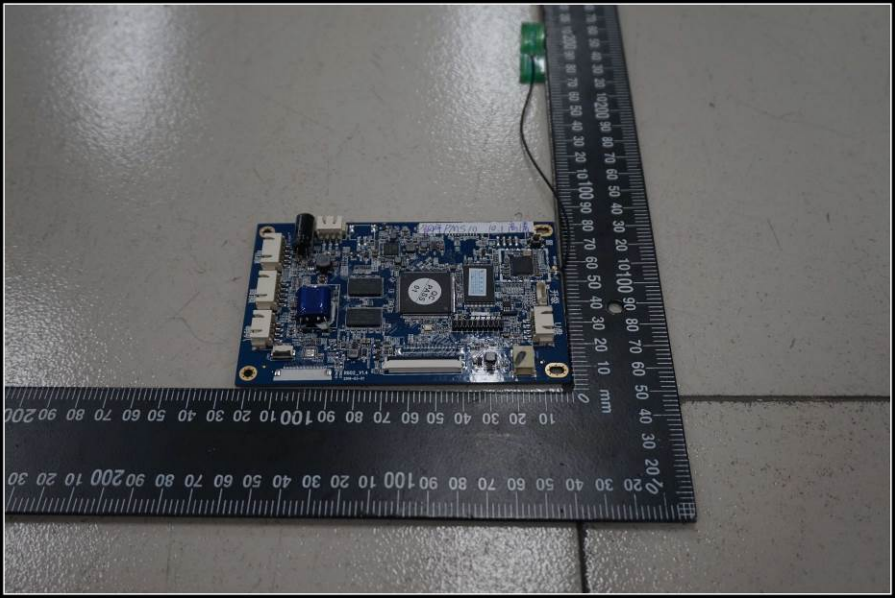
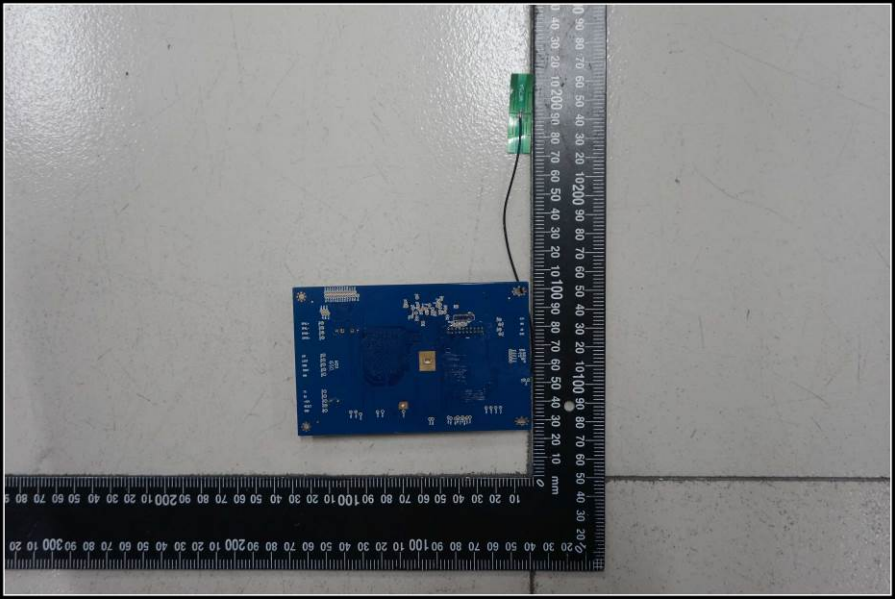


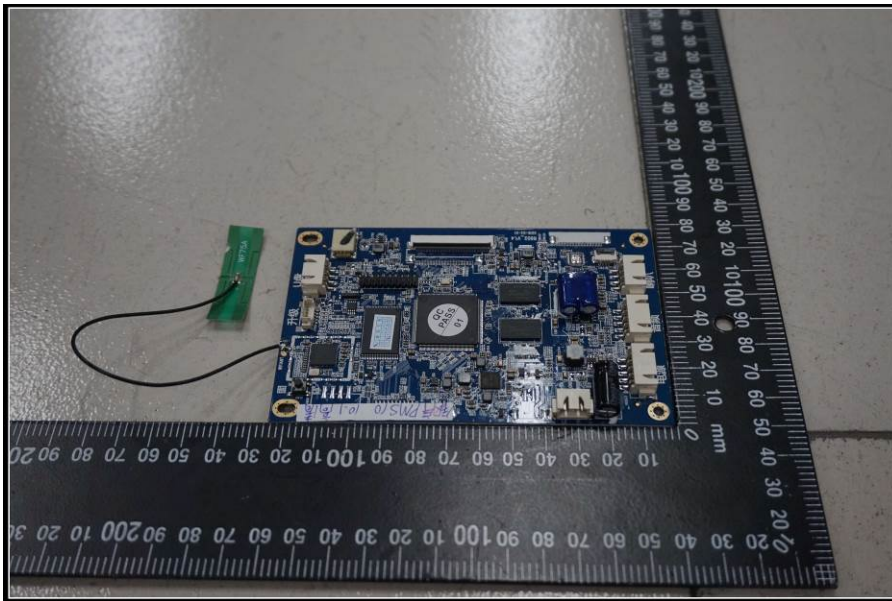
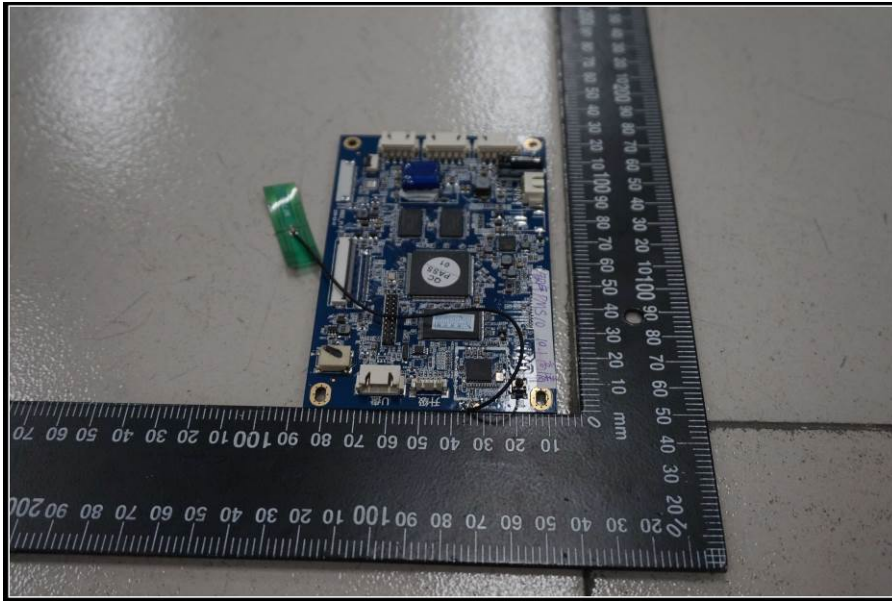




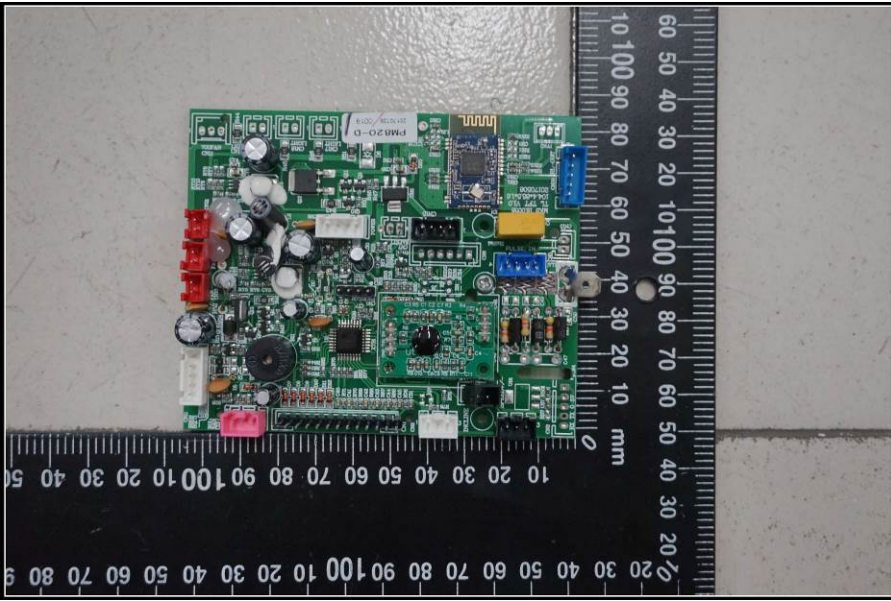
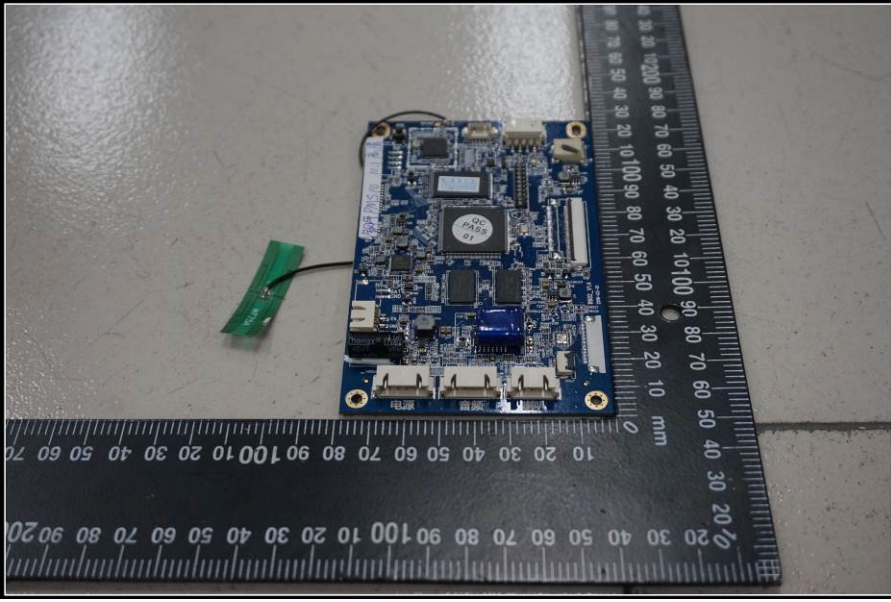


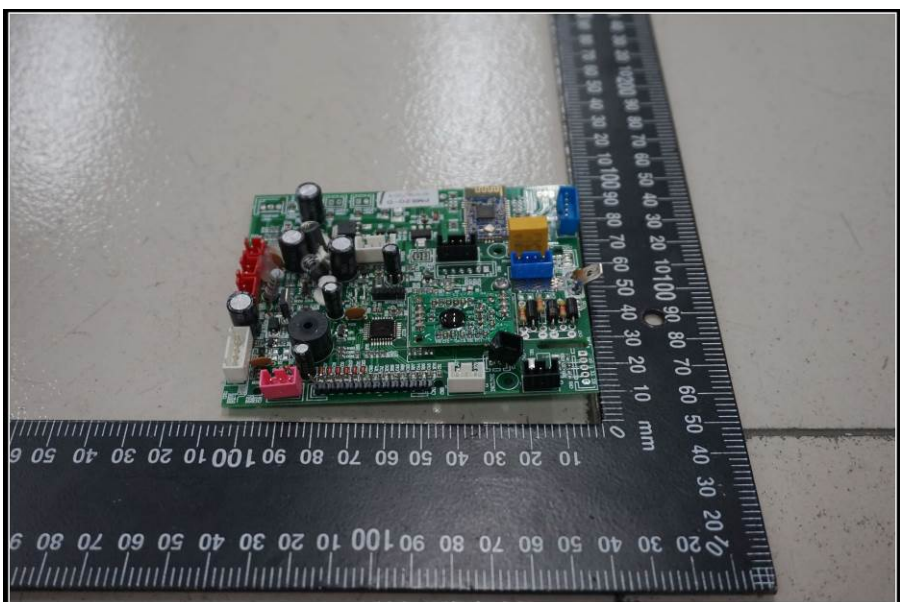
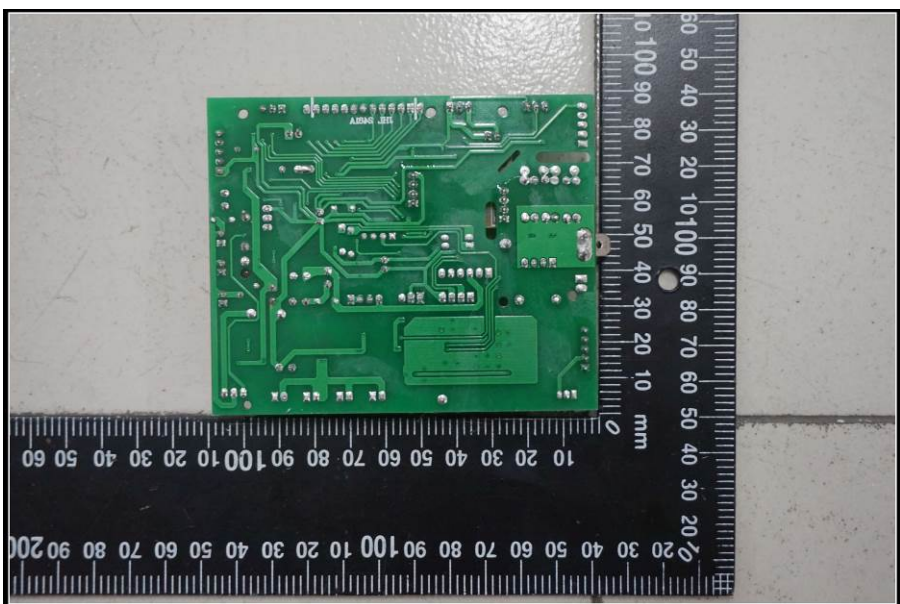




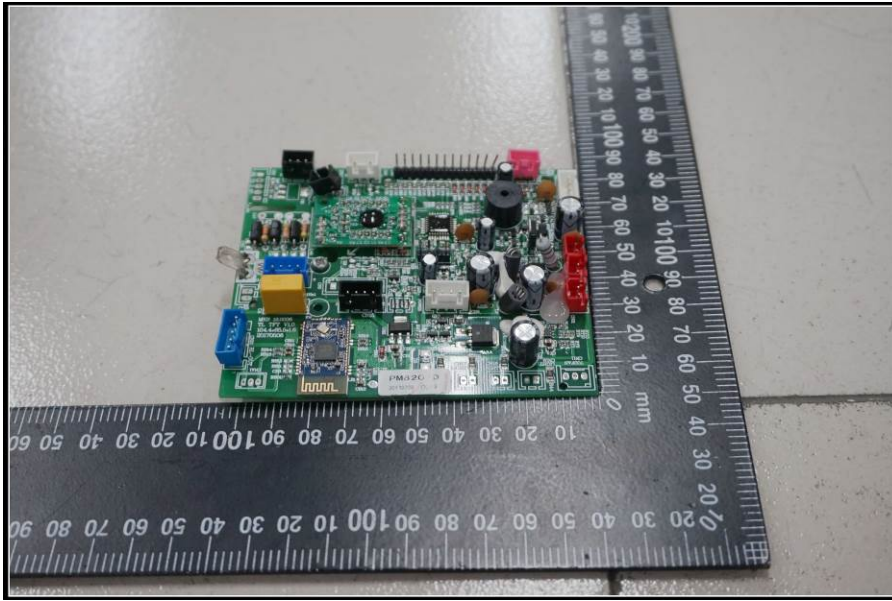
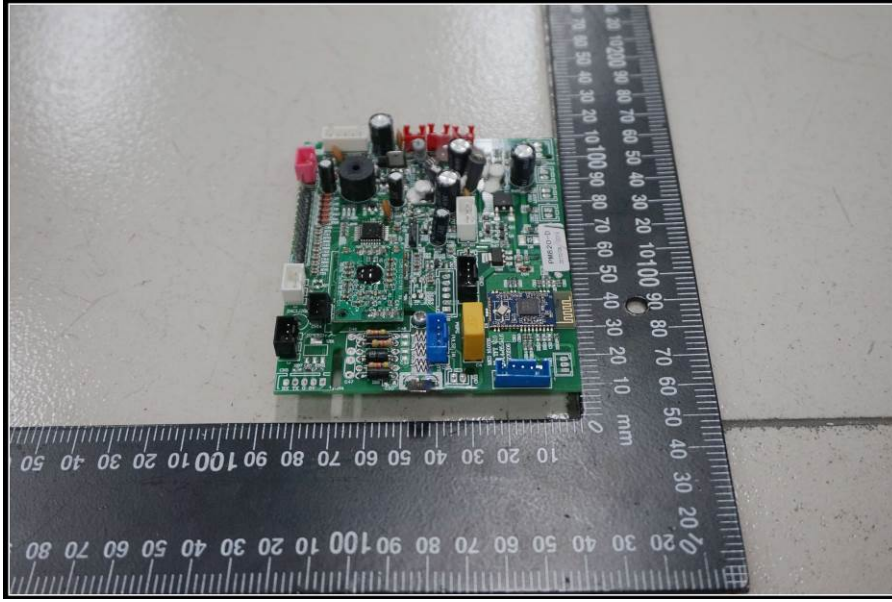


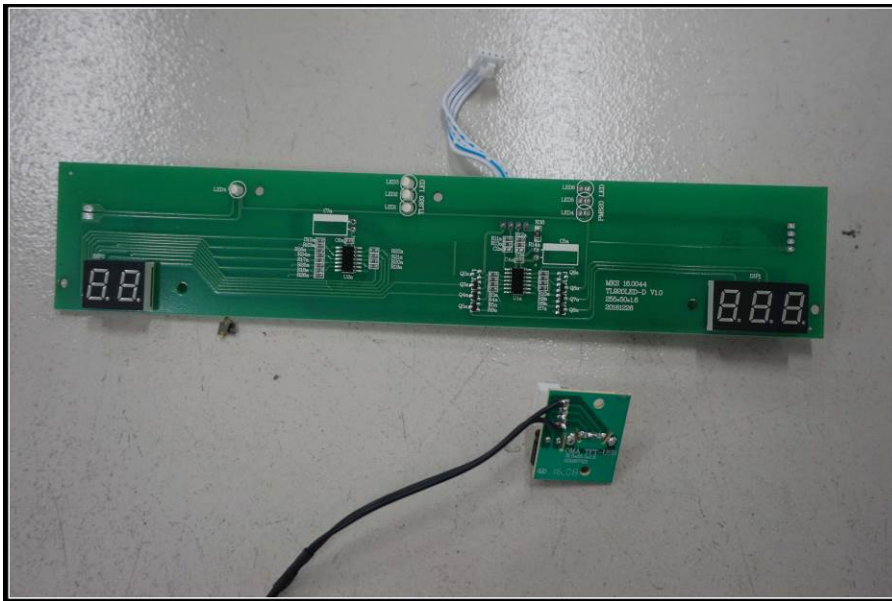
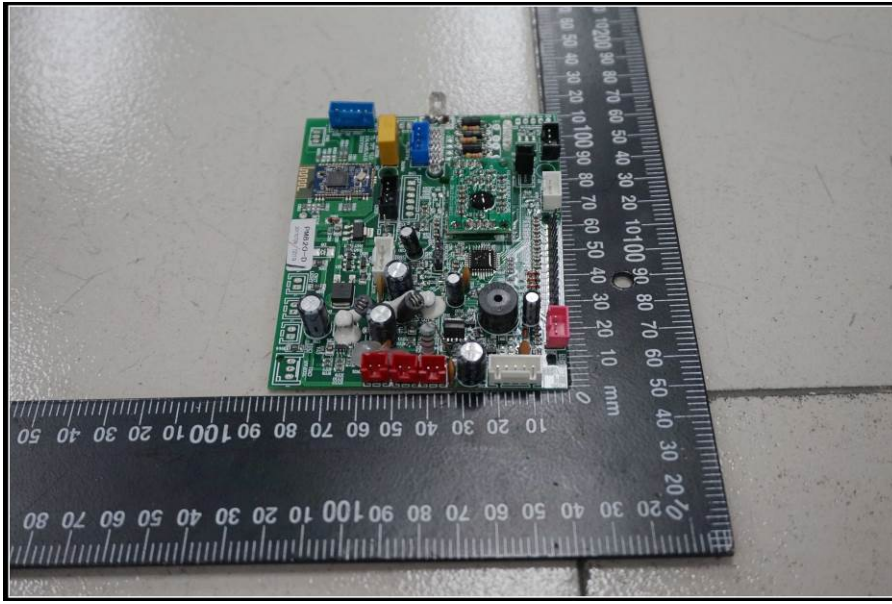


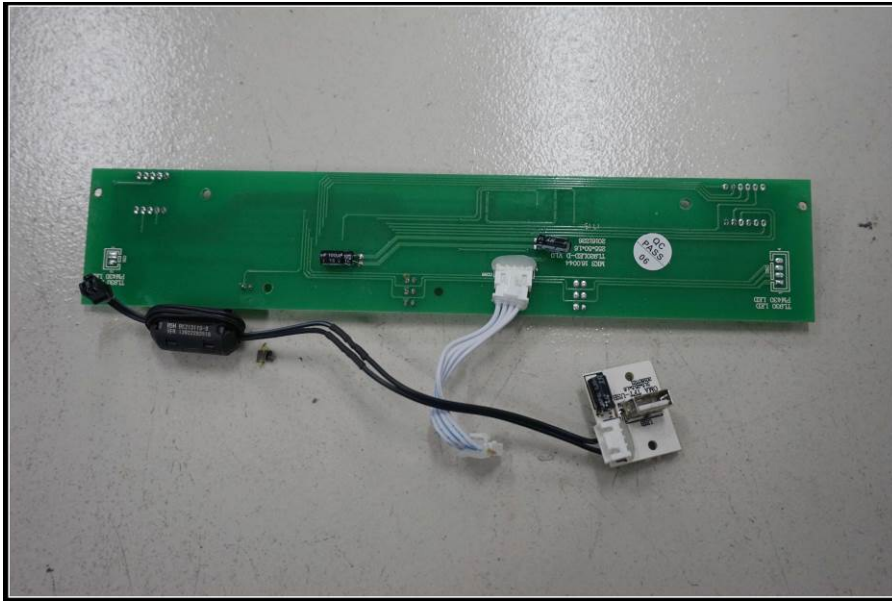








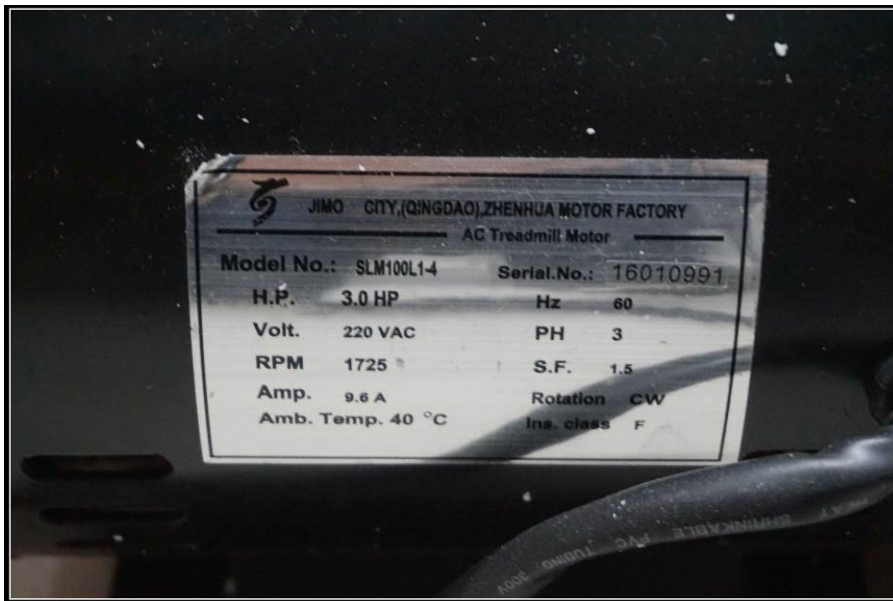




Model No.:PM810 with motor SLM100L1-4(3.0HP)

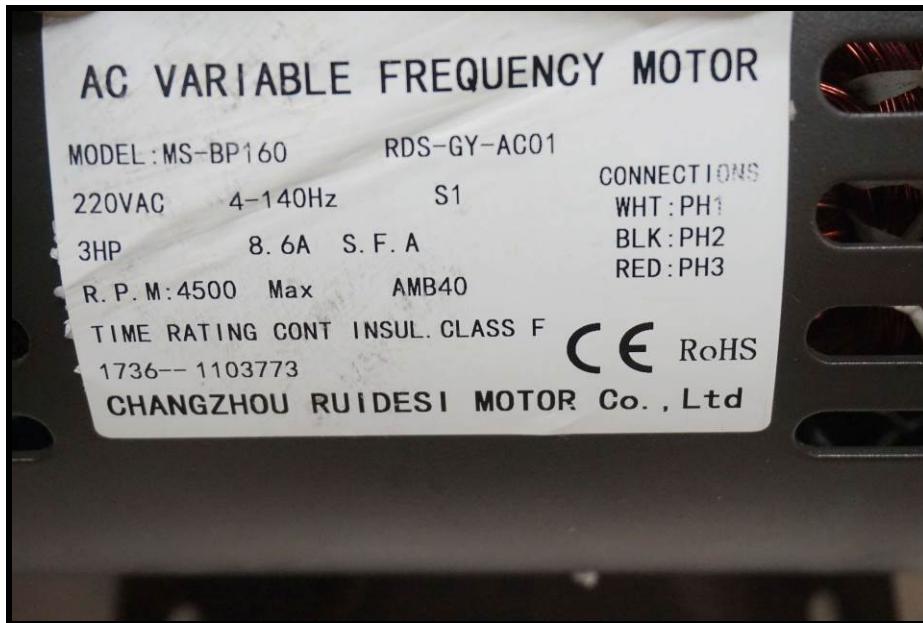






Model No.:PM810 with motor MS-BP160





Model No.:PM820 with motor MS-BP160CQ



High Voltage

## AC VARIABLE FREQUENCY MOTOR

MODEL: MS-BP160CQ RDS-GY-AC01

220VAC 4-100Hz S1

3.0HP 8.6A S.F.A

R.P.M.: 3000 (Max) AMB40

TIME RATING CONT INSUL. CLASS F

1740—2100008

CHANGZHOU RUIDESI MOTOR Co., Ltd

### CONNECTIONS

WHT: PH1

BLK: PH2

RED: PH3

CE RoHS



## Internal Photo

