

CAUTIONS:

- 1. Please format the card before power on, otherwise video errors and freezes will occur during video playback. Please use a high-speed TF card. If a low-speed card is used, problems are likely to occur.
- 2. You can view the video through the mirror. Or you can connect to the mobile APP to view through the mobile phone.
- 3. WiFi account: YV09-XXXXXX, Password: 12345678
- 4. About touch buttons: When two touch areas are touched at the same time, the touch buttons will malfunction temporarily. Function resumes after 15 seconds.

Note: For the best performance and durability of video recording, we recommend to use C10 U1 level TF card or better.



✳️ **This manual is only for your reference, please check the actual product as the standard!**

FCC Statement

Changes or modifications not expressly approved by the party responsible for compliance could void the user's authority to operate the equipment. This equipment has been tested and found to comply with the limits for a Class B digital device, pursuant to Part 15 of the FCC Rules. These limits are designed to provide reasonable protection against harmful interference in a residential installation. This equipment generates uses and can radiate radio frequency energy and, if not installed and used in accordance with the instructions, may cause harmful interference to radio communications. However, there is no guarantee that interference will not occur in a particular installation. If this equipment does cause harmful interference to radio or television reception, which can be determined by turning the equipment off and on, the user is encouraged to try to correct the interference by one or more of the following measures:

- Reorient or relocate the receiving antenna.
- Increase the separation between the equipment and receiver.
- Connect the equipment into an outlet on a circuit different from that to which the receiver is connected.
- Consult the dealer or an experienced radio/TV technician for help

This device complies with part 15 of the FCC rules. Operation is subject to the following two conditions (1) this device may not cause harmful interference, and (2) this device must accept any interference received, including interference that may cause undesired operation.

This equipment complies with FCC radiation exposure limits set forth for an uncontrolled environment. This equipment should be installed and operated with minimum distance 20cm between the radiator & your body.

Serial No.: 2023YV0961207

9.66 Inch 2K/1440P Streaming Media Mirror Monitor With Built-in Dash Cam

USER MANUAL

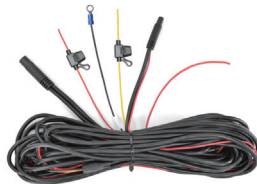


PACKAGE

The package contains the following:



1 Rear view mirror



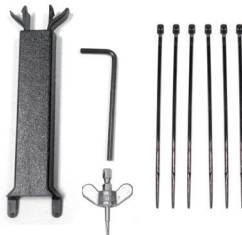
2 Wire harness



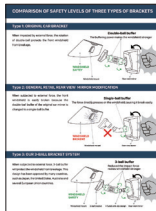
3 Rear camera



4 User manual



5 Accessories



6 User manual for bracket

For the items listed above, please check your packing contents. If any damage, please contact the distributor or the agent as soon as possible.

FEATURES

- Front recording 1440P/1080P
- Rear recording 1080P
- 9.66 inch full display screen
- Touch screen button
- Wi-Fi connection
- Parking mode
- Time lapses video
- Gps (optional)
- LCD power save
- G-sensor
- Super Capacitor
- Real-time view on app
- Waterproof rear camera
- Back up camera display
- Automatic screen brightness adjustment

SPECIFICATIONS

Solution	SSC8826Q
Flash	XMC-25QH32CH1G
Video Resolution	Front 1440P / Rear 1080P
Recording Angle	Front 140°/ rear 120°
Video Format	H.264, TS
Display Screen	9.66 inch MIPI IPS, 1920*480
Memory	SD card (MAX 128GB)

Wi-Fi	0-10m
Super Capacitor	Support
Supporting platform	Linux
Operation Temperature	-20°C ~ +70°C
Storage Temperature	-30°C ~ +85°C
Working Voltage	12-24V
Language	English, Traditional Chinese, ..

BASIC OPERATING INSTRUCTIONS

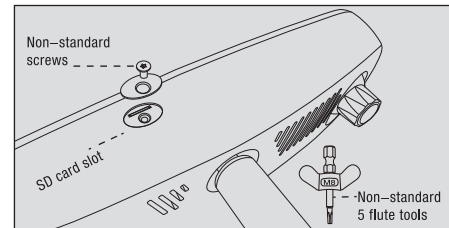
NOTED: The front camera can only be adjusted up and down, left and right, do not rotate 360°



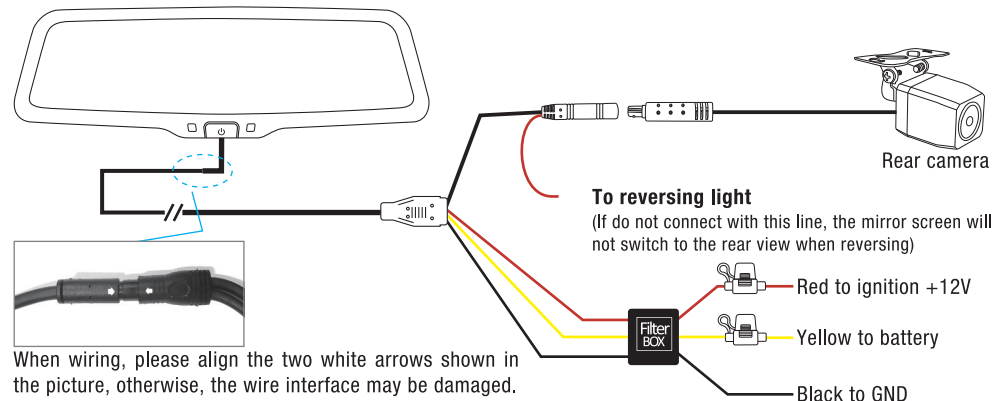
Corresponding function	Instruction manual
4: Touch button: Short press to enter menu settings	Stop recording first, then press this button to enter the menu settings
5: Touch button: Short press to adjust the visual position of the screen	Adjust the vertical up and down position of the current screen, and the setting result has a memory function
6: Touch button: short press to Replay theater	Long press is invalid
7: Touch button: short press to Take photos	Long press is invalid
8: Touch button: Short press to switch the front and rear image screens	The setting result has a power-off memory function
9: Touch button: Short press to lock the image screen	Long press is invalid
10: Ambient Light Sensing Window	There is a light sensor inside, which is used to control the brightness and darkness of the screen and the indicator light following the ambient light
11: Physical button: short press to switch screen, long press to switch machine	Press time ≥ 3S means long press
12: LED display window	The red light flashes when recording, the green light flashes when locking, and the red light is always on when the recording is stopped.

ABOUT THE SD CARD SLOT

Using anti-theft design, the SD card is hidden inside, locked with non-standard screws and covered with stickers. Patent special structure makes the card is hard to find and must use special non-standard 5 flute tools to open.

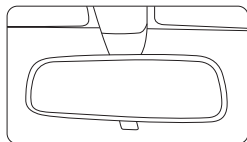


HOW TO WIRE

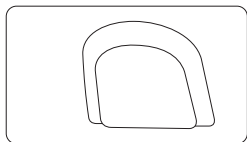


HOW TO INSTALL MIRROR MONITOR

Remove the original mirror



Car factory original mirror

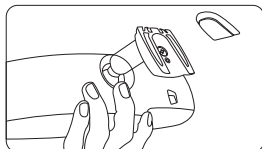


The plate on the windshield

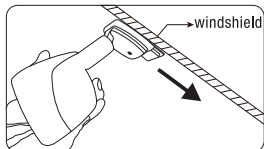
Different cars have different brackets. It depends on your vehicle maker and manufacturer. There are many methods to remove the original rear view mirror, however, please don't force the mirror off the bracket.

The manufacturer will not be responsible for damage caused to your car by wrong installation of the mirror.

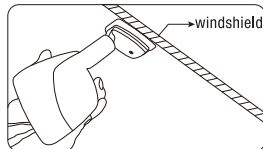
Install mirror monitor on the plate



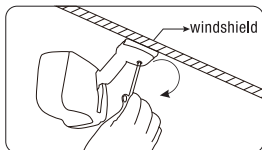
Take down your original mirror, and make the mirror monitor ready



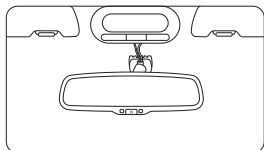
Install rear view mirror along this direction



Please make sure to install the mirror to the end of the bottom without any loose

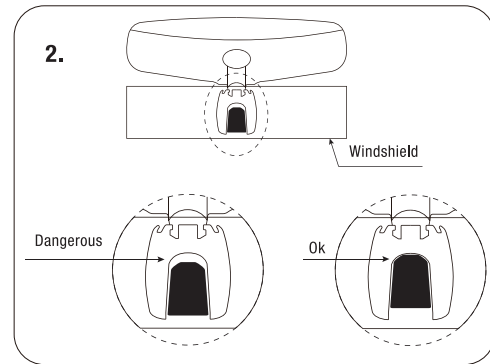
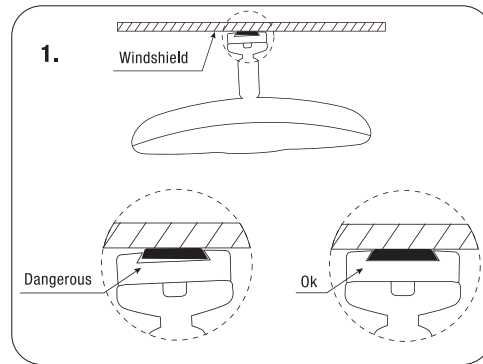


Contrarotate the fixed rear view mirror
Torque is about 0.8—1.3 N.m

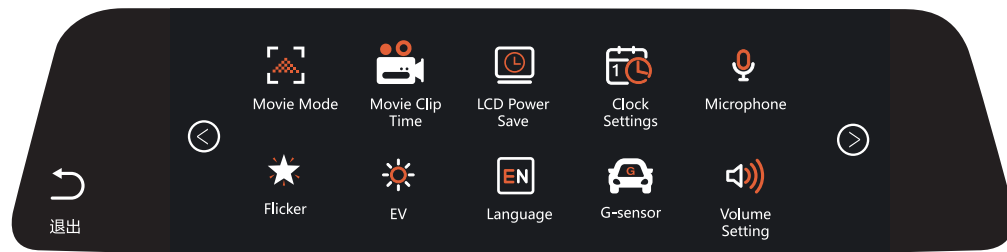


NOTE: Always use caution, DO NOT force the mount. We will not be responsible for broken windshields. If you are not sure how to remove or re-install the mirror seek trained, qualified help.

CAUTION!



MENU SETTINGS



Movie Mode:1440P/1080P

Movie clip Time:1minute/3minute/5minute

LCD Power Save:Off/30sec/1min/3min

Clock Settings:Date Time Adjustment

Microphone:On/Off

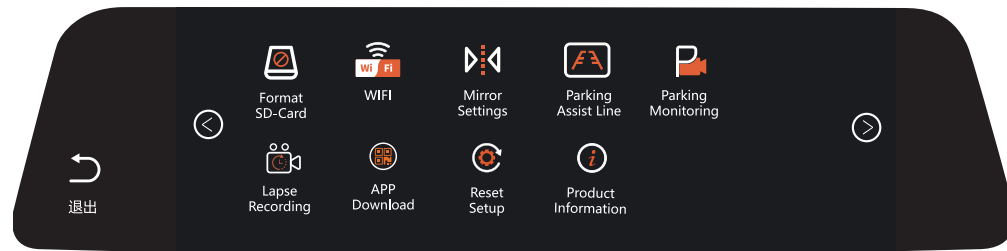
Flicker:50Hz/60Hz

EV:Screen Brightness Adjustment

Language:Multiple languages available

G-sensor:Gravity Sensing off/High/Middle/Low

Volume Setting:Key Volume Adjustment +/-



Format SD-Card:Format Card? YES/NO

WIFI :Open/Close

Mirror Settings:Rear camera mirroring ON/OFF

Parking Assist Line:Reverse track line ON/OFF

Parking Monitoring:Off/High/Middle/Low

Lapse Recording:Off/8H/12H/24H

APP Download:Scan QR code to download APP

Reset Setup:Reset the system back to factory settings

Product Information:version information

SCREEN SLIDE

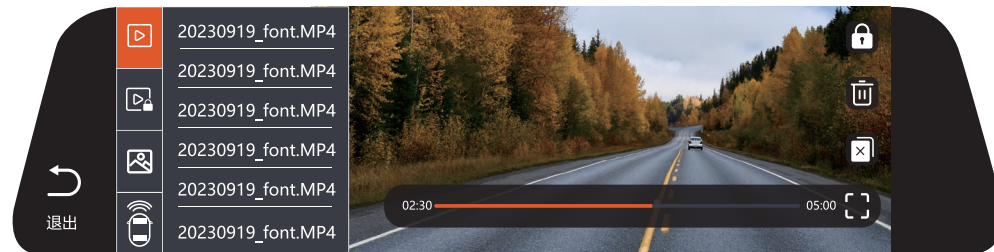
Note: The sub-sliding function only takes effect at the time when the rear camera displays the screen, so if you adjust it too much and don't know how to adjust it back, you can restore the appearance settings










- ① Swipe the screen in the direction of the arrow and the display will shift to the right.
- ② Swipe the screen in the direction of the arrow and the display will shift to the left.
- ③ Swipe the screen in the direction of the arrow and the display will shift upwards.
- ④ Swipe the screen in the direction of the arrow and the display will shift downward.
- ⑤ Clicking the button will enlarge the current screen.
- ⑥ Clicking on the button will shrink the current screen.

PLAYBACK

In the state of inserting SD card, tap “⏸”Pause Recording button in the main screen, and tap “📷”to enter the video/picture page in the state of paused recording



 :video	 :Video Lock Page	 :Picture Taking
 :Switching between pictures recorded/taken by the front and rear cameras		
 :Current Video Locked	 :Delete the current	
 :Delete all files		

MOBILE PHONE APP CONNECTION and OPERATION

Note : If the phone has been connected to this product, do not operate the machine. Operating the machine after connecting to the mobile phone APP may cause adverse phenomena. During the connection, please refer to the status of the mobile phone screen. If you need to operate the machine, first disconnect the mobile phone APP.

1: In the main interface to pause the video recording, click “⊕” to enter the menu option, click "APP Downlonad" scan the QR code to download the APP.



2: Pause the recording video in the main interface, tap “⊕” to open the menu page, tap "Product Information" to view the WIFI information.

3. Turn on your cellular WiFi and search for the machine's WiFi information to link to it.

3. Enter mobile phone interface, turn on Wi-Fi and connect Wi-Fi ID, enter initial password: 12345678, then connect. Please see figure 3

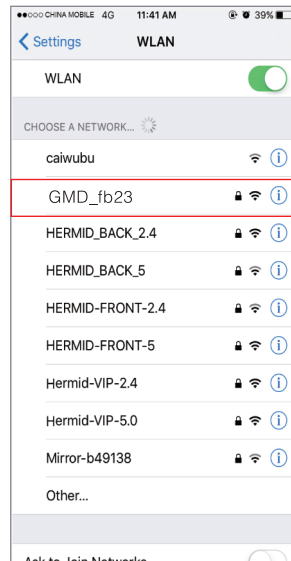


Figure 2

5. In Figure 4, click the “Into camera” icon, the phone and rearview mirror are successfully connected, as shown in Figure 5.

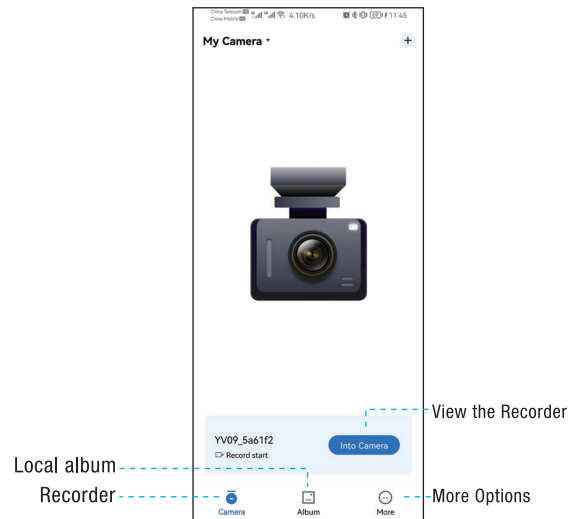


Figure 4

6. Once connected, user can check the recording video and operate accordingly. Click Camera Settings to access the settings page.

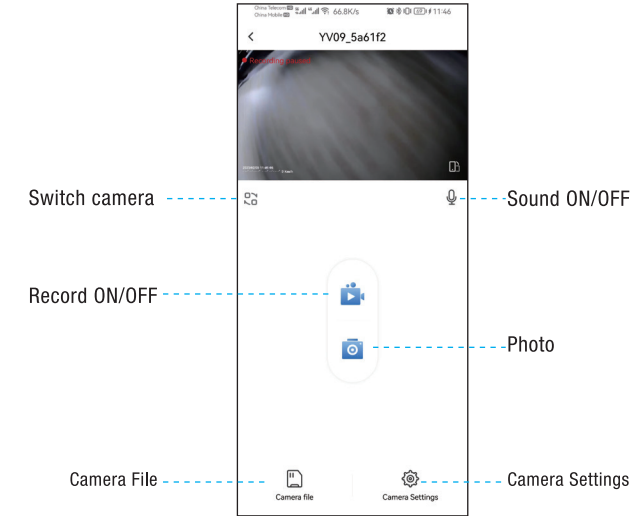
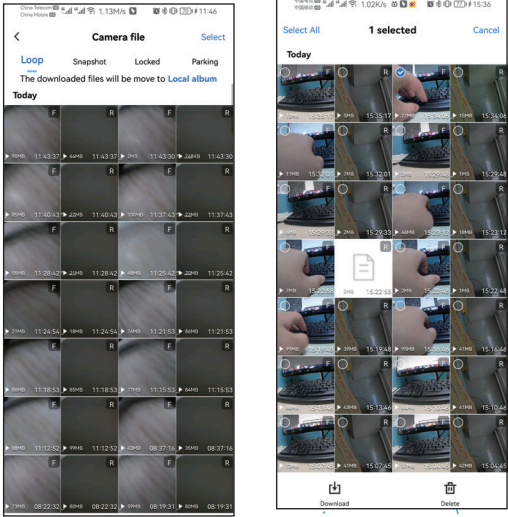


Figure 5

Click “ Camera File ” to enter the list of recorded videos, Press and hold the file thumbnail to select the file, download the video to the local, delete videos in batches, etc. See the figure below.



Download to local album Delete