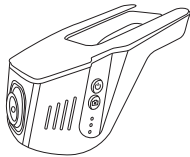


Hidden DVR Recorder
HD-12 Series

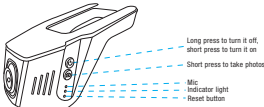


— Quick Start Guidance —

Product introduction

This product adopts Ambarella A12 solution with HD recording. Designed by the structure of vehicle itself, it is with compact, exquisite appearance, hidden installation and special for dedicated. You can install and program this by yourself. Moreover, this product does not contain lithium batteries. The professional processing technology of wide dynamic makes the abundant details available by capturing images in different lengths, and unites two frames into one at the same time. High-definition HD (1920 * 1080) video is with up to 30 frames per second (fps). The recorded video files are selectable; Continually dynamic screen; automatic coverage, loop record. In addition, you have no need to worry about the full storage of memory card. It also allows playback of video clips. It is a new high-tech product with multifunction that external memory card can support up to 32GB TF. This high-end driving recorder is mainly used in driving recording and it is the best helper to effectively improve the capability to get the evidence of traffic safety incident. Before using this product, please read this user manual carefully and kindly keep this manual; We hope that this product can meet your needs. After connecting successfully, user can check the image of driving recording intuitively and operate the relevant functions.

Function of buttons



* The system is defaulted as factory preset of auto recording and Wi-Fi is on.

Product parameter

MPU	Ambarella A12
Screen	Display through the phone screen
Video resolution	1920*1080 30P, HDR1920*1080 30P, 1280*720 30P, HDR1280*720 30P.
Recording angle	140 degree wide angle
Video footage	1 minutes (defaulted)
Video mode	Seamless recording, and coverwritten
Video signal	NTSC/PAL (defaulted as NTSC)
MIC	Support (default as ON)
Memory card	8-32GB, over class 10
Power supply mode	ACC
Battery	without
Work voltage	10-16V
Work temperature	-30°C ~ +80°C



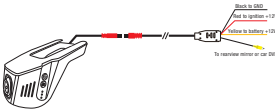
Installation instructions

1. Turn off car engine.
2. Insert TF card correctly.



Noted: Please use high speed TF card (over class 10), memory capacity should not be less than 8GB. It supports 32GB in max.

3. Connect yellow power line to 12V B+, red ACC to ignition, black is to ground, yellow video connector to AV interface of rearview mirror or car DVD. Start the engine and check installation and connection, if red light twinkle, it indicates the system is working and recording properly.



Special function introduction

HDR

HDR is an extremely useful feature that can provide 60fps with the odd frames at a short exposure time and the even frames at a longer exposure time. Then reproduce a greater dynamic range and luminosity in the captured video sequence.

G-sensor

With G-sensor function, DVR can automatically save the video as read-only file when it detects acceleration of gravity changes greatly. For example, when car crash happens, the read-only file will be locked and cannot be over-written in record cycle mode. It can only be manually deleted one by one or formatted.

Parking mode

Parking mode means this device can keep recording after ignition is off. When parking mode is on, both the recorder and indicator are off though the recorder is still recording videos. This function can protect your car well after you leave the car.

Record recycle

To ensure enough memory, new recorded video will automatically overwrite the pre-recorded one.

Distortion Correction

If the recorded angle is too large, the recording video will have a certain deformation, our machine has the features of distortion correction, so that the final recording image is more real.

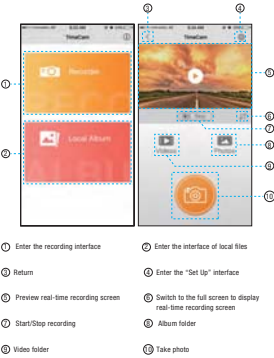
Mobile phone APP connection and operation manual

Built-in Wi-Fi module, this system can connect mobile phone through Android or iOS APP, please check below for its setup.

1. Open APP store, search "Tima network inc." to install.
2. Enter mobile phone interface, turn on Wi-Fi and connect Wi-Fi ID (default name: amba-boss), enter initial password: 1234567890, then connect.



3. Open mobile phone APP, once the device is connected successfully, user can check the recording video and operate accordingly.



Files

Under the stopping record mode, Click the button " ", enter the list of video file. Click "select", you can simply select or completely select another operation. For the selected files, can be deleted in bulk or downloaded to the local.



FCC Caution.

This device complies with part 15 of the FCC Rules. Operation is subject to the following two conditions: (1) This device may not cause harmful interference, and (2) this device must accept any interference received, including interference that may cause undesired operation.

Any Changes or modifications not expressly approved by the party responsible for compliance could void the user's authority to operate the equipment.

Note: This equipment has been tested and found to comply with the limits for a Class B digital device, pursuant to part 15 of the FCC Rules. These limits are designed to provide reasonable protection against harmful interference in a residential installation. This equipment generates uses and can radiate radio frequency energy and, if not installed and used in accordance with the instructions, may cause harmful interference to radio communications. However, there is no guarantee that interference will not occur in a particular installation. If this equipment does cause harmful interference to radio or television reception, which can be determined by turning the equipment off and on, the user is encouraged to try to correct the interference by one or more of the following measures:

- Reorient or relocate the receiving antenna.
- Increase the separation between the equipment and receiver.
- Connect the equipment into an outlet on a circuit different from that to which the receiver is connected.
- Consult the dealer or an experienced radio/TV technician for help.

***RF warning for Mobile device:**
This equipment complies with FCC radiation exposure limits set forth for an uncontrolled environment. This equipment should be installed and operated with minimum distance 20cm between the radiator & your body.