

Carplay & Android Auto DVR Mirror

USER MANUAL



Imirror Texas Inc

FCC Statement
Changes or modifications not expressly approved by the party responsible for compliance could void the user's authority to operate the equipment.
This equipment has been tested and found to comply with the limits for a Class B digital device, pursuant to Part 15 of the FCC Rules. These limits are designed to provide reasonable protection against harmful interference in a residential installation. This equipment generates uses and can radiate radio frequency energy and, if not installed and used in accordance with the instructions, may cause harmful interference to radio communications. However, there is no guarantee that interference will not occur in a particular installation. If this equipment does cause harmful interference to radio or television reception, which can be determined by turning the equipment off and on, the user is encouraged to try to correct the interference by one or more of the following measures:
-- Reorient or relocate the receiving antenna.
-- Increase the separation between the equipment and receiver.
-- Connect the equipment into an outlet on a circuit different from that to which the receiver is connected.
-- Consult the dealer or an experienced radio/TV technician for help
This device complies with part 15 of the FCC rules. Operation is subject to the following two conditions (1)this device may not cause harmful interference, and (2) this device must accept any interference received, including interference that may cause undesired operation.
This equipment complies with FCC radiation exposure limits set forth for an uncontrolled environment. This equipment should be installed and operated with minimum distance 20cm between the radiator & your body.

- PACKING LIST
- Package contains following items, please confirm.
- 1. Carplay & Android Auto Screen
 - 2. Car cigarette lighter
 - 3. Rear camera accessories
 - 4. Rear Camera
 - 5. Audio cable
 - 6. Rear camera extension cable
 - 7. GPS kit (Not included)
 - 8. Display Stand



- MAIN FEATURES
- 10.26 inch full dispaly screen
 - 4K front recording
 - 1080P rear recording
 - FM radio transmission
 - Apple Carplay
 - Wi-Fi connect
 - Bluetooth
 - HD night version
 - Android Auto
 - G-sensor
 - Multi touch screen
 - Reversing rear view

SPECIFICATIONS

CPU	Allwinner V535 Cortex-A7@1 GHz		
SOFTWARE	Linux	DDR	DDR32GB
CarPlay	iPhone	Android Auto	Android phone
Bluetooth	support	FM radio transmission	support
G-sensor	3-axis	Multi touch	support
View Parking	Adjustable	Reversing recording	support
Display	10.26 inch, display resolution: 1600(V)*600(H)		
Camera	Front camera	4K 3840*2160P, S/25fps	
	Rear camera	1080P 1920*1080, S/25fps	
WIFI	802.11ac/b/g/n 2.4G/5G Dual Mode		
Language	English/Chinese/French;/German/Italian;/Spanish;/Hebrew;/Japanese;/Russian;/Turkish;/Korean;/Polish;/Arabic;/Hungarian;/Czech;/Dutch;/Lithuanian		
Storage temperature	-30°C ~ +80°C		
Working temperature	-20°C ~ +70°C		
Memory card capacity	Maximum support 256GB(Not included)		

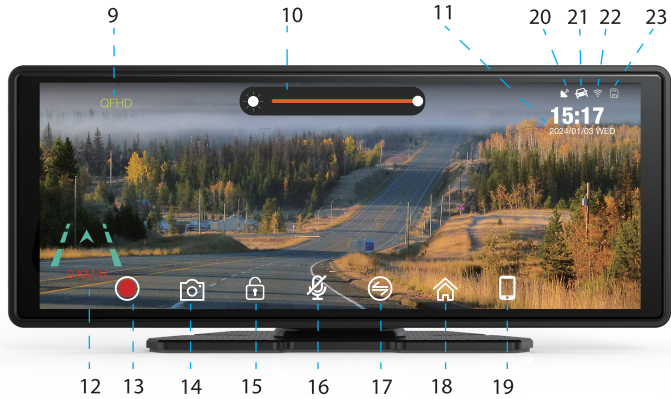
PRODUCT INTRODUCTION

MONITOR SIDE & BACK



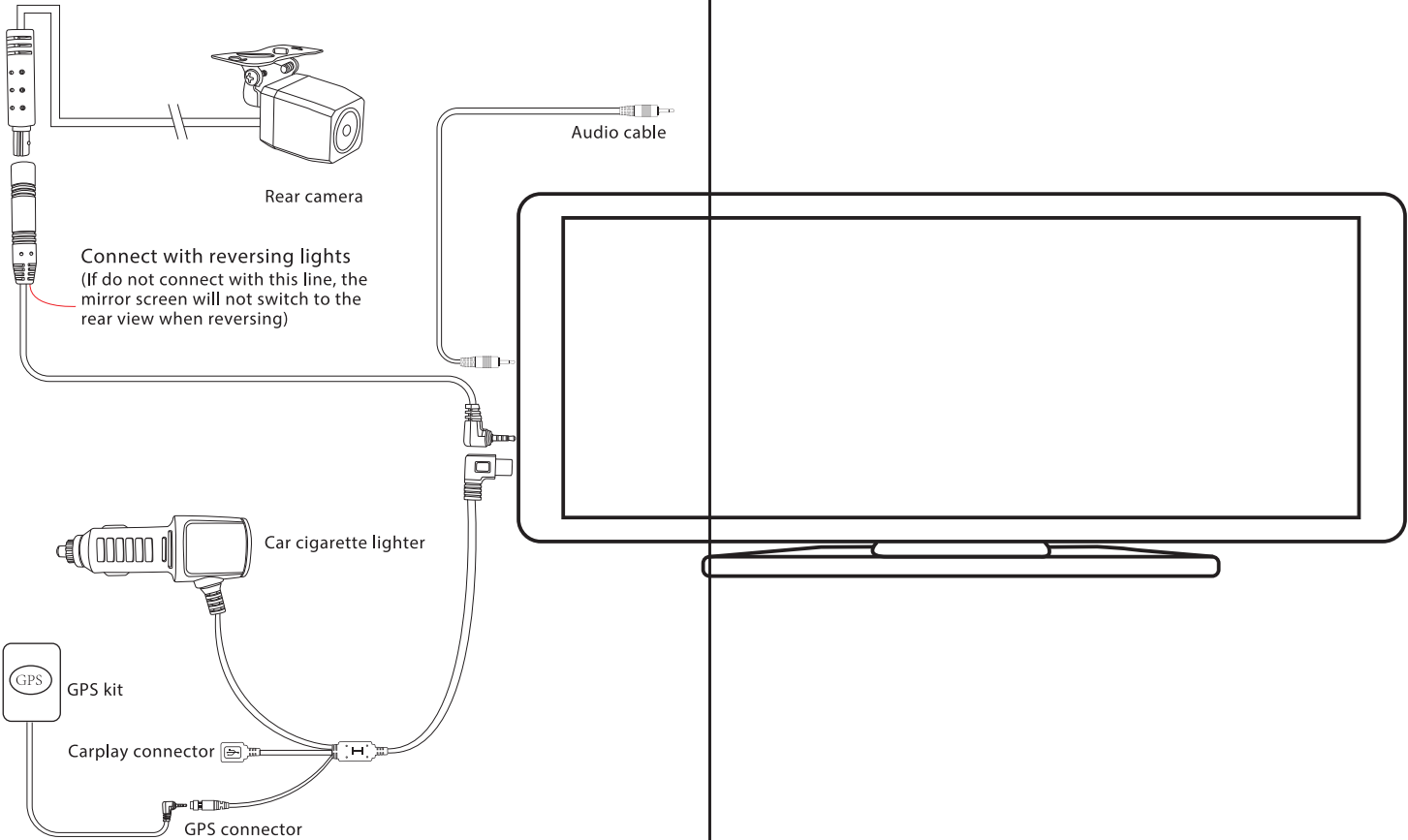
- 1. Audio output connector
- 2. TF memory card slot
- 3. Rear camera connector
- 4. Type-C power connector
- 5. Power button (short press to turn on/off the screen, long time press to turn on/off)
- 6. Front HD Camera
- 7. Speaker
- 8. Reset hole

MONITOR FRONT



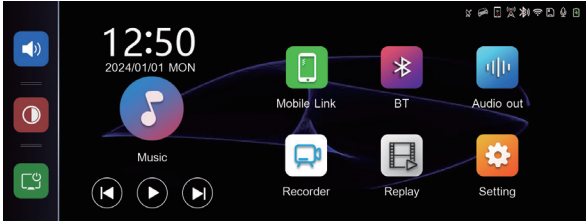
- 9. Video Recording Resolution
- 10. Screen Brightness Bar
- 11. Date and Time
- 12. Speed and Direction (only display when connected GPS)
- 13. Start & Pause Button (video recording)
- 14. Photograph button
- 15. Lock video key
- 16. Sound Recording Switch
- 17. Front and Rear Camera Switching Key
- 18. Back to Main Menu
- 19. Switch to Mobile Video Link Key
- 20. GPS Icon(only display when connected GPS)
- 21. Crash Sensitive Icons
- 22. WIFI Connected Signal Icon
- 23. TF Card Present

HOW TO WIRE

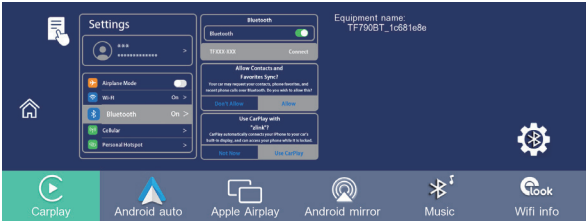


Note

- 1, Android Auto carplay supports wired and wireless connection
- 2, After turning on the FM transmitter function or inserting the AUX cable, the device will have no sound. Otherwise, the device will have sound
- 3, Bluetooth is a function of connecting with mobile phone, and it does not support audio transmission to car speaker



The 10.26 inch product support wired or wireless Android Auto/Carplay, and "Mobile Link" functions. In the setting, click "Mobile Link", select the mode (Apple Carplay / Android Auto), and then the device will switch to the corresponding mode.



Wireless Carplay / wireless Android Auto Connection tutorial

1) **iOS Version, please follow below steps**

First click the "Mobile Internet" on Setting to switch to the Carplay mode,For first connection, please open iPhone's Bluetooth & WiFi. Connect the DVR's Bluetooth mode, then wait for 5-10 seconds. The mobile phone will pop up one window and choose to use Carplay vehicle. After the Bluetooth authentication becomes successful, and disconnects automatically, the DVR's Carplay interface will be transmitted automatically. The device will automatically re-connect next time (No need any cooperation if the DVR's Bluetooth & WiFi is opened)

9

Common problem
The copyright of some video content is resticted and the screencasting is not supported.

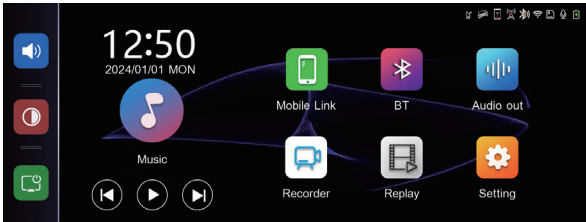
FAQ

- 1, How do I disconnect the CarPlay / Android Auto?
Please turn off the WiFi on mobile phone.
- 2, How to connect the device again if manually disconnecting CarPlay / Android Auto?
Please click the phone's Bluetooth to connect the device again.
- 3, How to connect CarPlay / Android auto when power off and restart the dvr device?
If the mobile phone have connected the DVR device before, then it will reconnect if the phone's Bluetooth and WiFi is ON.
- 4, How to adjust the volume when you connect Carplay / Android auto?
There is volume + / - on the DVR device, you can adjust volume.
- 5, How to connect the vehicle's original audio?
After connecting Carplay / Android auto, you can turn on DVR's FM transmission function, then turn on the car's FM radio to adjust and set up the same FM frequency as DVR's FM, then you can transmit the music to the original car audio .

SERVICE SUPPORT

Monday ---Friday 9:30 a.m.---6:00 p.m.(U.S.Central Time)
Customer Service Tel: +1(909)551-5517
E-mail: germid.info@gmail.com
You can also bring the products that need to be repaired to our Dallas office to get after-sales service directly.
IMIRROR TEXAS INC.
Add:11443 Wainwright Way , Suite 155 , Carrollton, TX 75007

Part 1: Interface description



Remark

When you insert a micro SD card, the device will automatically enter into the recording mode. To ensure normally recording, please select at least class 10 or higher speed memory card.

13

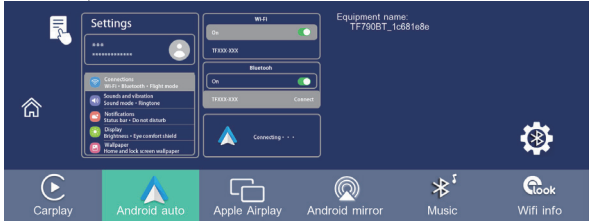
Note: Due to the version issues of iOS system, please do not select to connect the device's WiFi, If the connection is failed, please manually ignore the connected device's "xxx" and click Bluetooth connection again.

2) **Android Version, please follow below steps :**

First, please confirm that your phone is Android 10 or higher version. Android phones need to install the Android Auto App in advance (you can download it in Google Store)

- 1) First click the "Android Auto" on Setting to switch to the Android Auto mode,
- 2) Check whether the Bluetooth and WIFI of DVR are open
- 3) Open the Bluetooth and WiFi of the mobile phone,
- 4) Bluetooth of the mobile phone connect to the paired DVR.
- 5) After the Bluetooth connection is successful, wait for 10-15 seconds to automatically enter the Android Auto page.

In addition, because there are many Android mobile phones, some mobile phones may be incompatible. If your phone cannot successfully connect to Android Auto, please ask the merchant for help first.



Mirror Link Connection tutorial

iPhone

1. Connect mobile phone to device's wifi.
2. Open the Apple pull-up menu to find Screen Mirroring.
3. Click to connect zj-airplay.

Button description
Volume -, Volume +, back to the main interface.

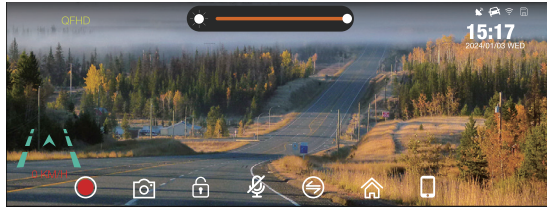
Common problem
The copyright of some video content is restricted and the screen casting is not supported.



10

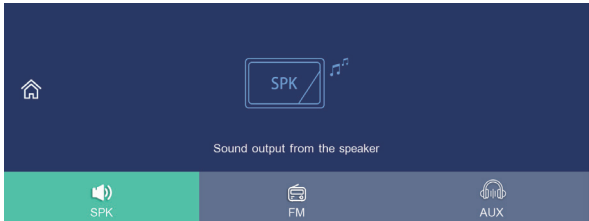
Driving recorder

Click icon , "Recorder" to enter the preview screen of dash cam



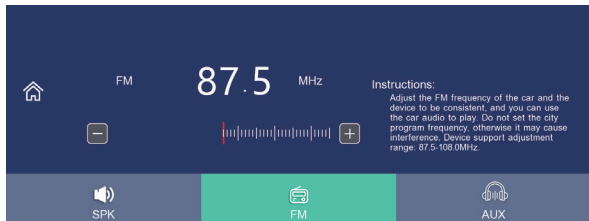
Audio out

Click "Audio out" to enter audio setting interface



The way of connecting FM

The frequency band of the device needs to be consistent with the car's radio

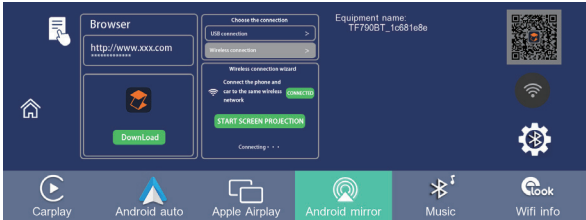


14

Android Phone:

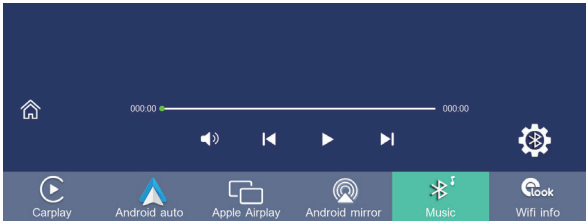
1. Scan the QR code to download the app and turn on the mobile hotspot (recommended to set the 5G frequency band).
2. For first connection, click WiFi icon to input the hotspot information. Only numbers, English and some special character combinations are supported.
3. Connect to BT, click to start screen casting.

Button description:
Volume -, Volume +, back to the main interface.



Play music by bluetooth

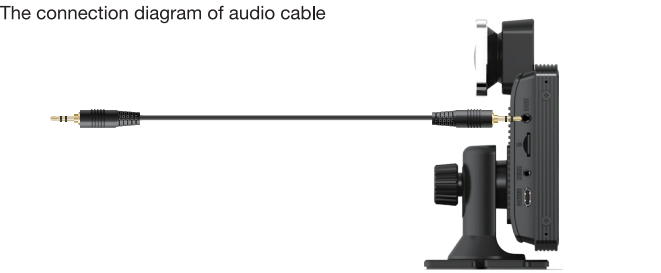
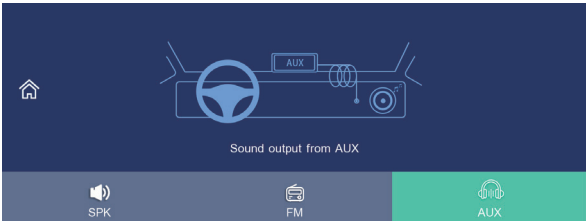
You can play music by connecting bluetooth in following interface, this function will not work in the FM and AUX interface of the "Audio out".



11

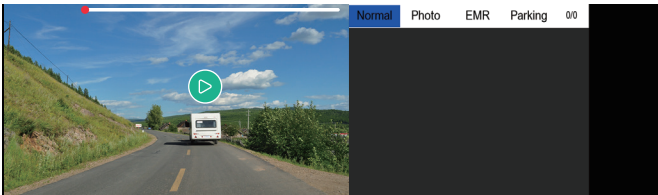
The way of connecting AUX

In order to use this function, you need to insert one end of the audio cable into device and the another end into car's audio input end.



Replay

Click icon "Replay" , you can check the recorded video.

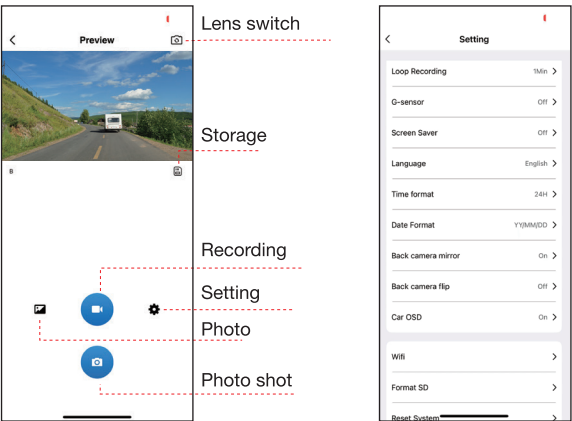


15

Download APP

Scan the QR code and download the APP, you can check videos and photos through WIFI connection.

SSID:TF790-XXXXXXX
PWD:12345678

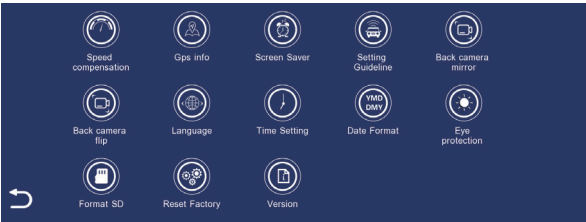
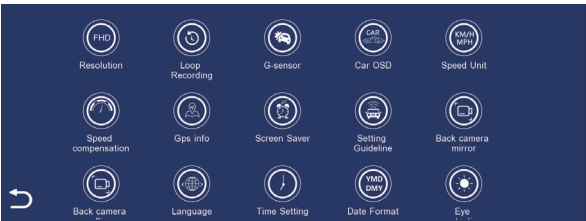


Main interface

12

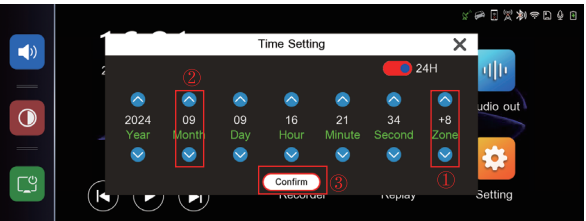
System setting

Click icon "setting" to enter the system setting interface



How to make sure the time do not need resetting after restart?

Open the time and date setting, first set the correct time zone ① (you can search your local time zone on Google), then adjust the correct time ②, and finally click "Confirm" ③.



16