



Up to 192K/24bit

Hi-Res Wireless Audio Amplifier

Portable BT Amplifier

PA-101BT

X Dual-Driver In-Ear Headphones

User Manual

- CAEE Audio Enhancing Technology to 192K / 24bit Quality



- High / Low Gain Adjustments



High Gain for headphones with higher impedance level.



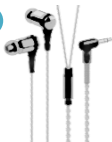
Low Gain for Earphones with lower impedance level.

- Supports 2.5mm Balanced Audio Out

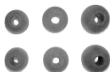
1



2



3



4



5



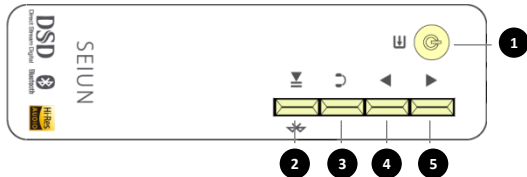
1. **Portable Bluetooth Amplifier PA-101BT *1**
2. **Hi-Res Dual-Driver In-Ear Headphones*1**
3. **Ear caps in three sizes: Small, Medium, Large**
4. **USB Cable**
5. **User Manual**

PA-101BT Specifications

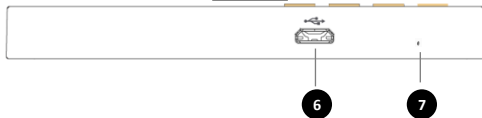


- Audio Output Balanced 192K / 24bit
- SNR (HP-AMP) 108dB
- THD + N (HP-AMP) 0.007 %
- Frequency Response 5Hz – 48kHz
- Power Output 50mW / 16 Ω
- Audio Out Connector 2.5mm balanced
- Wireless Connection Bluetooth V4.2/BLE
- Bluetooth Protocol A2DP, AVRCP, HFP, SPP
- Bluetooth Power Class-2
- Communication Distance >10M
- USB Audio DSD128 / PCM352K Hi-Res Player
- PC Connection Micro USB 2.0
- Storage 8GB Internal Memory
- Microphone Built-in
- Battery Life 12 hrs
- Battery Charging via Micro USB Port

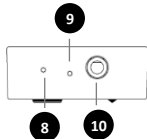
Front View



Side View



Top View



This end connects to headsets

Button	Long press	Short press
1	Power On / Off	Audio Source Select Bluetooth - Player
2	Disconnecting Bluetooth (under BT connection)	Play / Pause Music
3	Language select English – Voice Off - Japanese	Gain Select Headphone – High Gain Earphone – Low Gain
4	Select Previous	Volume Down
5	Select Next	Volume Up
6	Micro USB Port Battery charging / USB Audio port	
7	Reset	
8	2.5mm Balanced Audio out port	
9	LED Indicator Solid Green LED - Under Player Mode Solid Blue LED - Under BT Mode Flashing Blue LED - Bluetooth pairing Solid Red LED - Battery charging	

Connecting to Bluetooth

Default start-up audio will be on Bluetooth wireless mode.

- 1 Turn on the unit by long press the power button. (**button 1**)
- 2 Connect your playing devices with the PA-101BT under ID name **"PA101_00a"** shown on your playing devices.
- 3 To disconnect Bluetooth connection long press button 2 .

Bluetooth LED indications:

LED flashing in blue: Bluetooth Pairing

LED on solid blue: Bluetooth Connected.

Using the Built-in Player

- 1 Turn on the unit by long press the power button. (**button1**)
- 2 Switch to player mode by short press the audio source button. (**button 1**)
- 3 Skip to the next track by long press the select next button. (**button 5**), or return to the previous track by long press the select previous button. (**button 4**)

USB Connection (USB Audio Streaming)

1	Turn on the unit by <u>long</u> press the power button. (button 1)
2	Connect to PC or Smartphones (via OTG) to use USB audio streaming. (under PC connection please activate USB memory for data transfer.)
3	Download the ZEUS Player for Windows Hi-Res use. Download the SEIUN Player for Android Hi-Res use.
4	Run APP for Hi-Res music thru USB Audio Streaming.

Organizing Files via USB connection

1	Turn OFF the unit by <u>long</u> press the power button. (button1)
2	Use the USB cable included in the package to connect the PA-101BT to the computer.
3	Select device under the name “Cyberdrive” and now you can organize the music files.

Battery Charging

- 1 Connect the PA-101BT to external power supply using the Micro USB cable.
- 2 RED LED will come on indicating that the battery is charging.
- 3 LED will flash GREEN when the battery is fully charged.
- 4 Remove the USB cable when charging is completed.

Organizing Files via USB connection

- 1 Turn OFF the unit by long press the power button. (**button1**)
- 2 Use the USB cable included in the package to connect the PA-101BT to the computer.
- 3 Select device under the name “Cyberdrive” and now you can organize the music files.

Hi-Res Dual-Driver In-Ear Headphones

The EP-150 Series



Hybrid -Dual Driver Speaker

2 *Hi-Res Speaker-Driver units per Ear*

- Audio Out: 2.5mm balanced
- Speaker Driver/ear: 10mm Dynamic driver x 1unit
Balanced Armature driver x 1unit
- Frequency Response: 5Hz – 40kHz
- Sensitivity: 97 ± 3 dB/mW@1KHz
- Impedance: $16 \pm 15\%$ ohm@1KHz
- Rated Power: 1mW
- Power Capacity: 10mW

2.5mm to 2.5mm Balanced cable



By using the balanced signal audio the sound noise generated when audio signal passes thru the wires is greatly reduced very similar to noise cancellation system. The PA-101BT portable Amplifier supports balanced signal audio for maximum music listening enjoyments.

Legal Disclaimers

LEGAL DISCALIMERS

SAFETY INSTRUCTIONS:

Keep these instructions.

Heed all warnings.

Follow all instructions.

Do not use this apparatus near water.

Clean only with dry cloth.

Do not install near any heat sources such as radiators, heat registers, stoves or other apparatus that produce heat. Only use attachments / accessories specified by the manufacture.

Unplug this apparatus during lighting storms or when unused for long periods of time.

Refer all services to qualified service personal.

Servicing is required when the apparatus has been damaged in any way, such as plug damage, Liquid has been spilled or objects have fallen into the apparatus, the apparatus has been exposed to rain or moisture, does not operate normally, or has been dropped.

Do not dismantle or attempt to repair your product.

Do not expose your product to temperatures outside the range of 0°C to 40°C (32°F to 104°F).

Do not pierce, rush or set fire to your product.

SAFETY WARNINGS:

TO REDUCE THE RISK OF FIRE OR ELECTRIC SHOCK, DO NOT EXPOSE THIS APPARATUS TO RAIN OR MOISTURE.

Do not expose the unit to dripping or splashing.

Do not place any object filled with liquid, such as a vase, on the unit.

Do not place naked flame sources, such as lighted candles, on the unit.

To avoid overheating leave at least 10cm around the equipment for sufficient ventilation.

Do not position the unit in direct sunlight, near heat sources or directly on top of heat producing Equipment.

To avoid interference do not position the unit near strong electrical or magnetic radiation, such As near a power amplifier.

Warranty

WARRANTY:

CYBERDRIVE Product is covered by warranty to be free from defects in material and Workmanship for one year from the date of purchase; subject to the limitations and conditions outlined below.

This warranty covers the cost of labor and materials for any repair deemed necessary by the CYBERDRIVE Service Team. Proof of purchase or a copy of the sales receipt will be required for any claim made against the warranty.

LIMITATIONS AND CONDITIONS:

The PA-101BT portable amplifier and the EP-150 In-Ear Headphones are covered under the warranty only if the following conditions have been met:

It has been used in accordance with the instructions given in the section Safety.

Instructions and Safety warnings elsewhere in this document.

It has not been altered or modified in any way.

It has not been purchased from an unauthorized dealer.

It has not been subjected to an unauthorized repair or service.

In order to make a claim against the warranty, the approved process for returning a faulty unit for repair or replacement must be followed.

To learn about this process please contact Support at: contact@verisonix.com

RADIO INTERFERENCE:

FCC Warning: This equipment generates and can radiate radio frequency energy and if not installed and used correctly in accordance with our instructions may cause interference to radio Communications or radio and television reception. It has been type-tested and complies with the Limits set out in Subpart J, Part 15 of FCC rules for a Class B computing device.

EEC: This product has been designed and type-tested to comply with the limits set out in USE with USB 1.1, 2, 3, 3.1 only.

FCC Statement

Changes or modifications not expressly approved by the party responsible for compliance could void the user's authority to operate the equipment.

This equipment has been tested and found to comply with the limits for a Class B digital device, pursuant to Part 15 of the FCC Rules. These limits are designed to provide reasonable protection against harmful interference in a residential installation. This equipment generates uses and can radiate radio frequency energy and, if not installed and used in accordance with the

instructions, may cause harmful interference to radio communications. However, there is no guarantee that interference will not occur in a particular installation. If this equipment does cause harmful interference to radio or television reception, which can be determined by turning the equipment off and on, the user is encouraged to try to correct the interference by one or more of the following measures:

- Reorient or relocate the receiving antenna.
- Increase the separation between the equipment and receiver.
- Connect the equipment into an outlet on a circuit different from that to which the receiver is connected.
- Consult the dealer or an experienced radio/TV technician for help

This device complies with part 15 of the FCC rules. Operation is subject to the following two conditions (1) this device may not cause harmful interference, and (2) this device must accept any interference received, including interference that may cause undesired operation.



»» *Powered by VERISONIX*



©2017 CYBERDRIVE, All rights reserved. CYBERDRIVE, the CYBERDRIVE logo, and all other CYBERDRIVE trademarks are Owned by CYBERDRIVE and may be registered. The Hi-Res work mark and logos are registered trademarks owned by Japan Audio Society and any use of such marks by CYBERDRIVE is under license. All other trademarks are property of their respective owners. CYBERDRIVE assumes no responsibility for any errors that may appear in this manual. Information contained herein is subject to change without notice.