

WyPLUG User Manual



Please read carefully before using the product.

The picture of User's manual might be upgraded without any notice.

You can find the latest User Manual in WAPEUL web site (www.wapeul.com)

CONTENTS

WyPLUG Overview

Features	3
----------	---

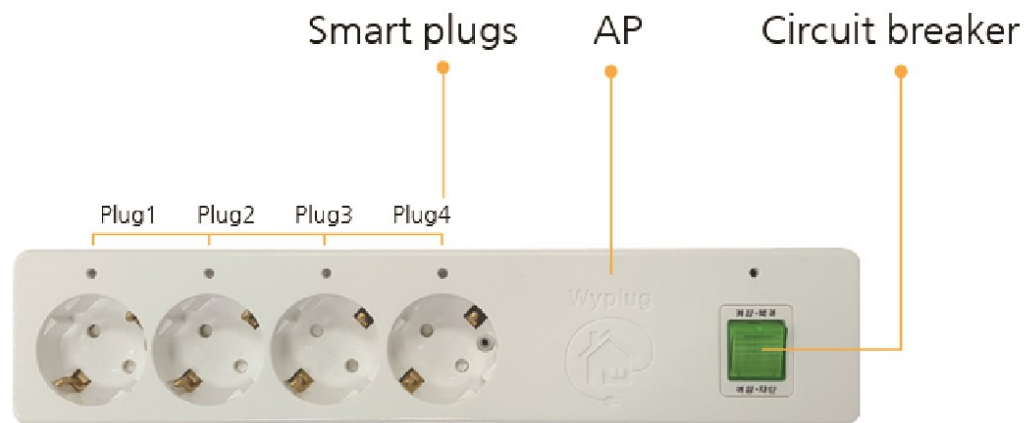
Starting WyPLUG

Before starting using the product	4
1. Power Connection	5
2. Application Installation	6
3. Setting WIFI	7
4. User's Registration and Login	10
5. Register product	12

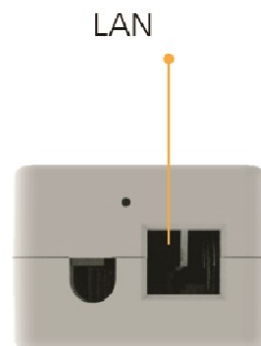
How-to

Group	13
Share Device	17
Device Setting and information	19
Scheduling	21
Q&A	22
Specification	23
Quality Assurance	24
Notice	25

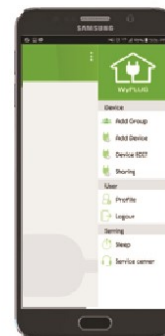
Features



Front



Right



App

Before start it



Before using WyPLUG Service, please follow the procedures

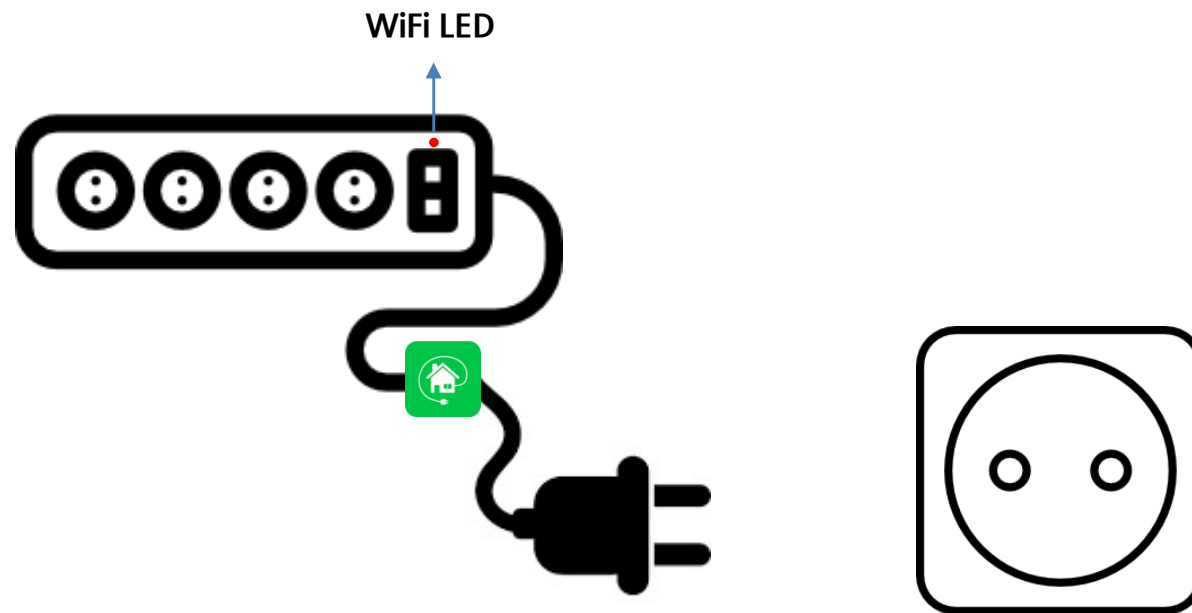


1. How to Connect Power

Connect Power

Connect WyPLUG socket into Power Plug.

After pressing ON button, please check WIFI LED is on and off periodically.

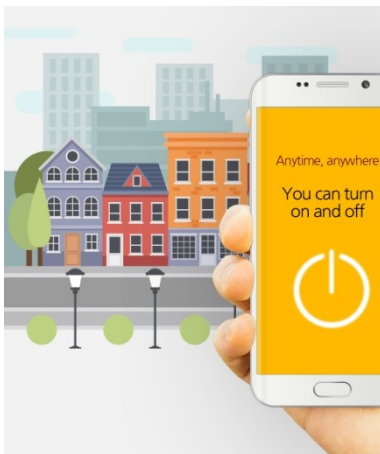


2. How to install App.

App. Installation

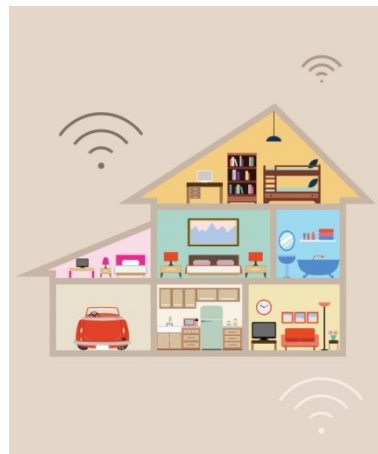


You can download with keyword search “WyPLUG” in Playstore or AppStore and install it
For Android, you can directly download App in wapeul.com/wifi/android.apk



Smart Plug

Power control can be available
outside



Router / Extender / Repeater

Build and extend WiFi Network



Grouping / Sharing

WyPLUG can be shared
with your family and friends



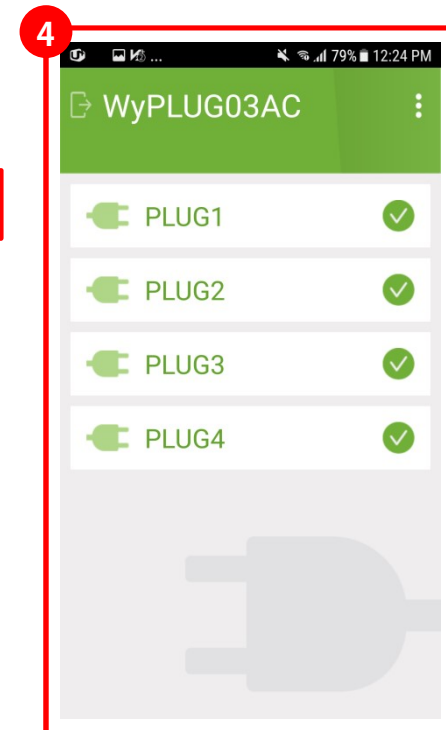
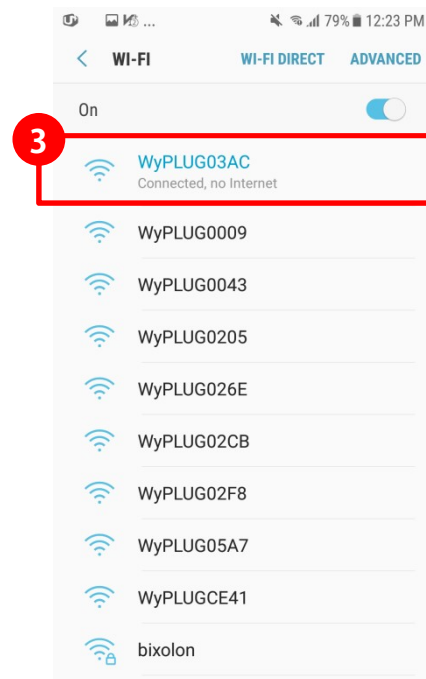
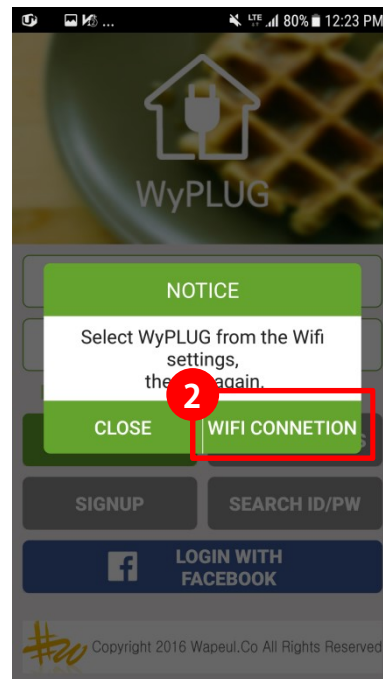
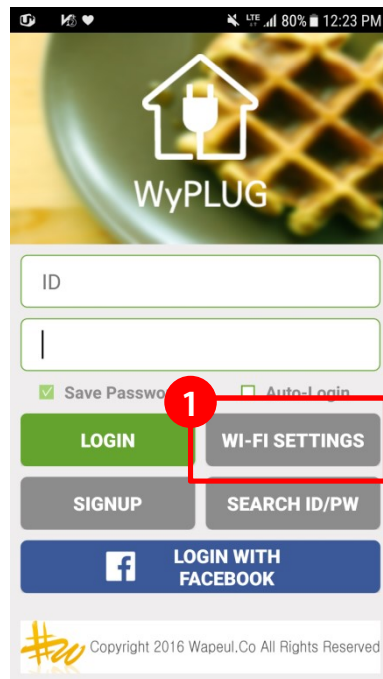
3. WIFI Setting - android



WyPLUG can be set any mode in Factory. (Repeater or LAN Card Mode). After accessing through WIFI scan, please set repeater mode to use your old AP.

WIFI Setting

1. Start Application in your Smart Phone and set WIFI settings' button.
2. In Notice Popup, click WiFi CONNECTION.
3. In WiFi Scan list window, click SSID in the list. SSID starts with WyPLUG followed by 4 digits.
4. Again go back to WyPLUG App, and click again WIFI SETTINGS button.)



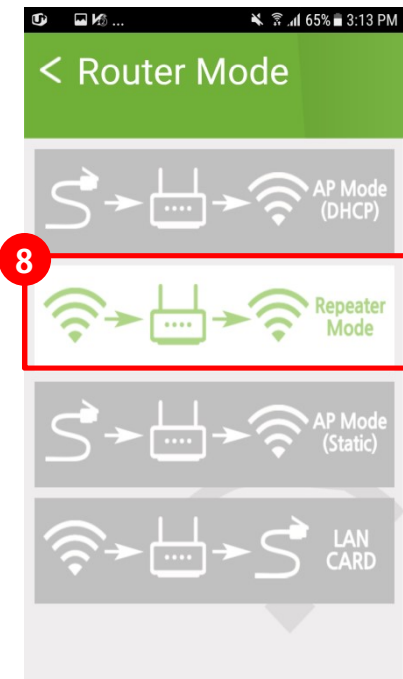
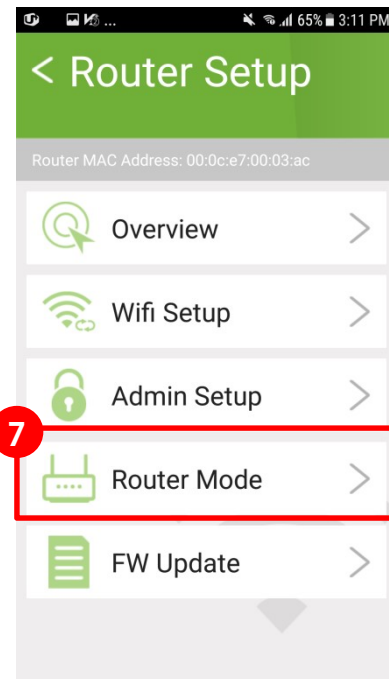
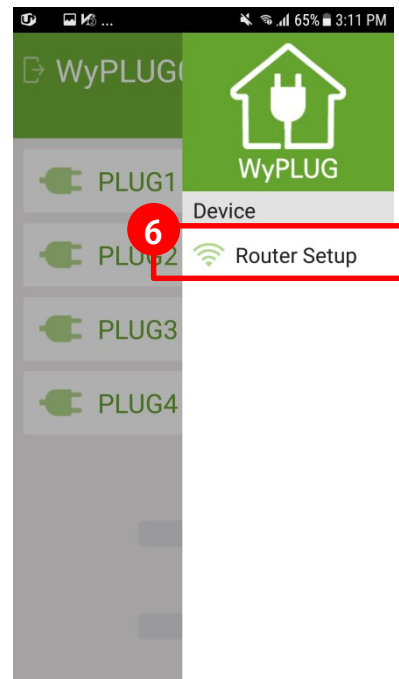
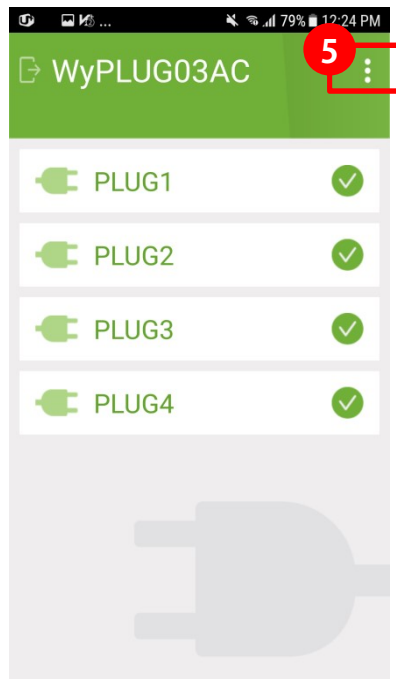
3. WIFI Setting - android



WyPLUG can be set any mode in Factory. (Repeater or LAN Card Mode). After accessing through WIFI scan, please set repeater mode to use your old AP.

How to set WIFI

5. Click right top Menu Icon
6. Click Router Setup
7. Click Router Mode
8. To use your existing active AP, click Repeater Mode. If you don't have WiFi AP, click AP to use wired LAN.



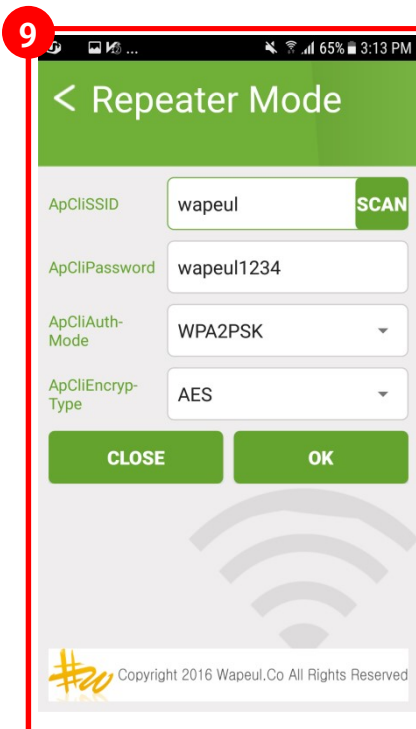
3. WIFI Setting - android



WyPLUG can be set any mode in Factory. (Repeater or LAN Card Mode). After accessing through WIFI scan, please set repeater mode to use your existing active AP.

How to set WiFi

9. SSID, Network Security, Authentication Method, Encryption Type should be selected to allow secure Internet Access. In the following picture, user's WiFi AP SSID is "wapeul" and its password is "wapeul1234". (WPA2PSK, AES is recommended by default App. Setting)



If you change the router settings, you will be taken to the initial screen and the WIFI connection will be disconnected to reflect the changes.

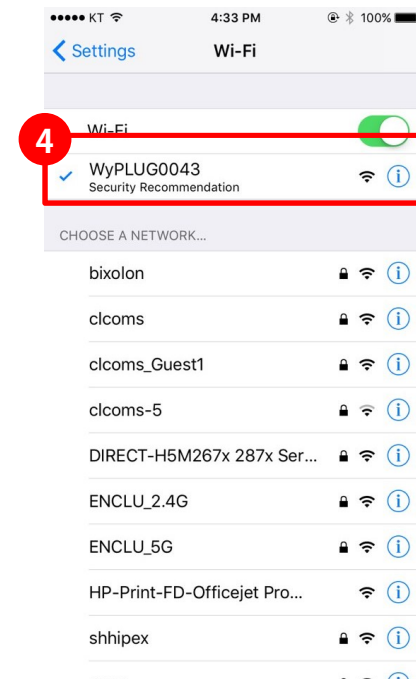
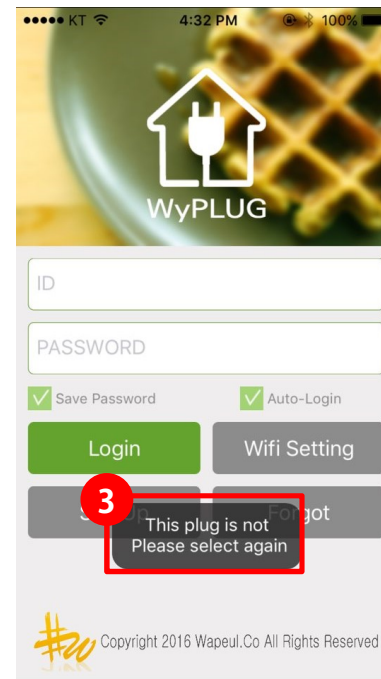
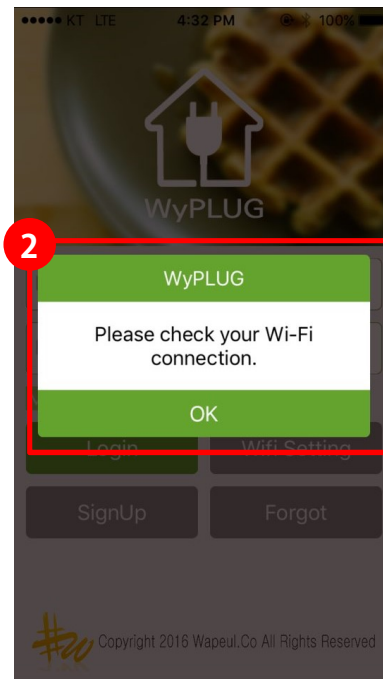
Wait for a while, go back to the WIFI settings window and find the correct WyPlug SSID.

3. WIFI Setting - iOS

⚠ WyPLUG can be set any mode in Factory. (Repeater or LAN Card Mode). After accessing through WIFI scan, please set repeater mode to use your existing active AP.

WIFI Setting

1. Start Application in your Smart Phone and set WIFI settings' button.
2. If WIFI is off, the message "Please check your WiFi connection" will be shown. Accordingly turn on WIFI and connect SSID starting with WyPLUG, followed by 4 digits.



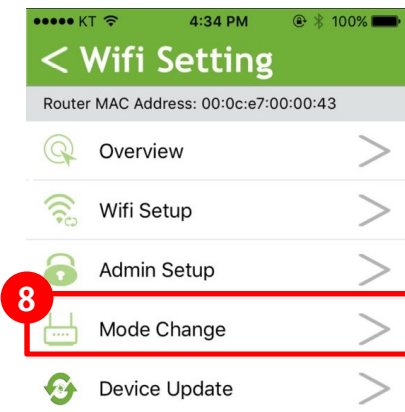
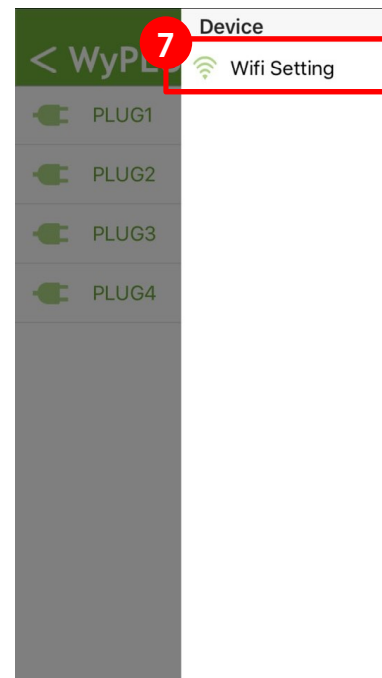
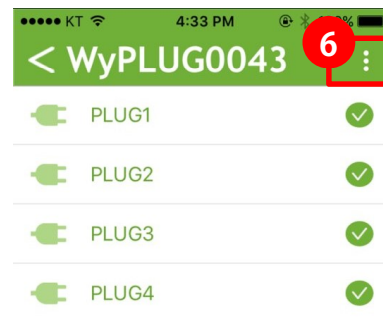
3. WIFI Setting - iOS



WyPLUG can be set any mode in Factory. (Repeater or LAN Card Mode). After accessing through WIFI scan, please set repeater mode to use your existing active AP.

WIFI Setting

5. To be connected with WyPLUG SSID, you will see the following pictures.
6. Click right top Menu Icon.
7. Click Router Setup
8. Click Router Mode

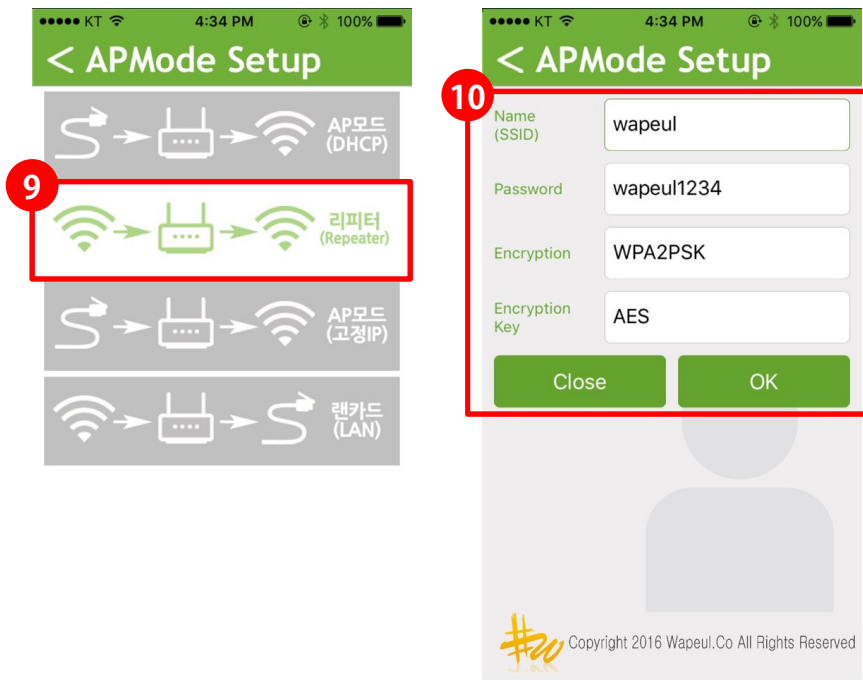


3. WIFI Setting - iOS

! WyPLUG can be set any mode in Factory. (Repeater or LAN Card Mode). After accessing through WIFI scan, please set repeater mode to use your existing active AP.

WIFI 설정하기

9. To use your existing active AP, click Repeater Mode. If you don't have WiFi AP, click AP to use wired LAN.
10. SSID, Network Security, Authentication Method, Encryption Type should be selected to allow secure Internet Access. In the following picture, user's WiFi AP SSID is "wapeul" and its password is "wapeul1234". (WPA2PSK, AES is recommended by default App. Setting)

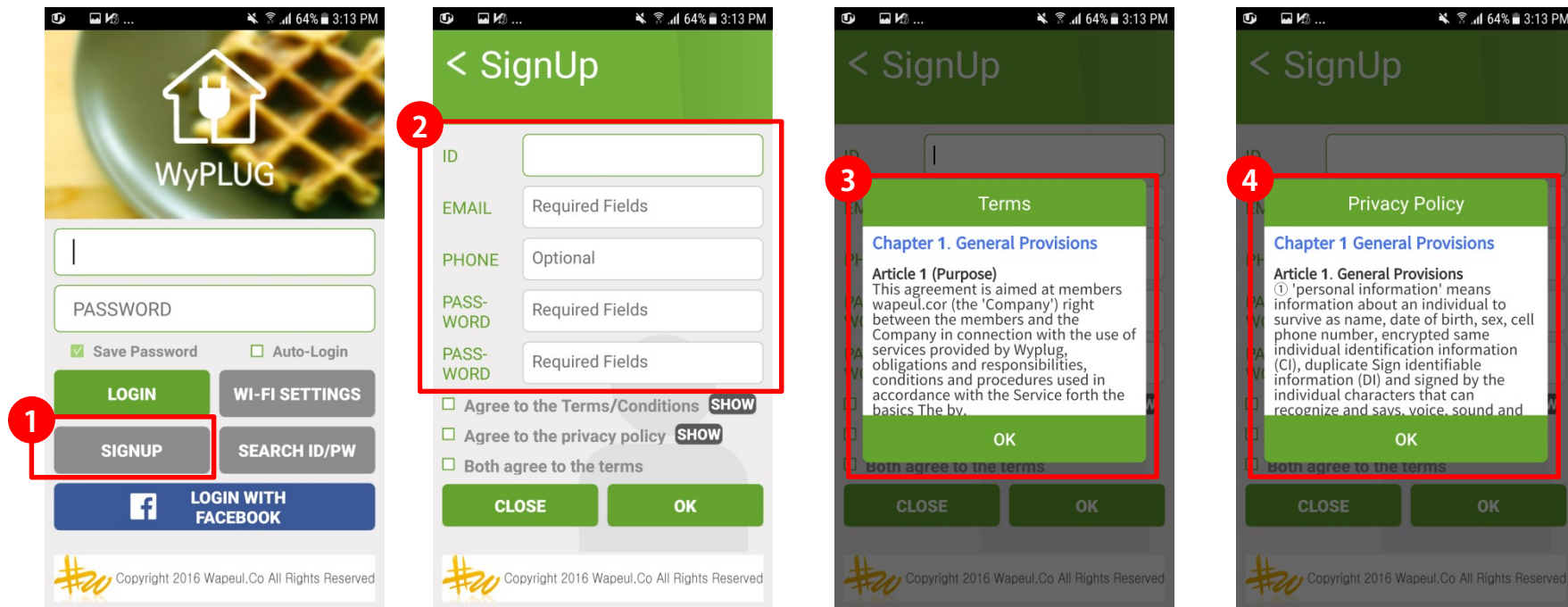


! If you change the router settings, you will be taken to the initial screen and the WIFI connection will be disconnected to reflect the changes. Wait for a while, go back to the WIFI settings window and find the correct WyPlug SSID.

4. Registration of User's membership and login

Registration and Login

1. Click SIGNUP button
2. Fill all the required information into Required Fields
3. Make sure of clicking "SHOW" to read all the required agreements
4. Make sure of clicking "SHOW" to read all the privacy policy

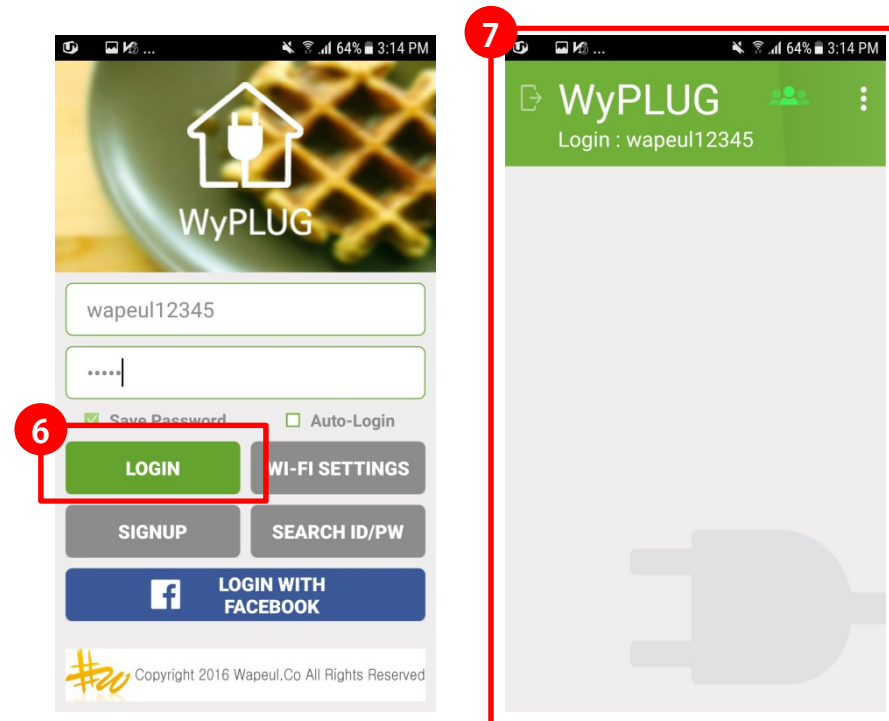


4. Registration of User's membership and login

! If you have to verify your email address before using this App.

Register Membership

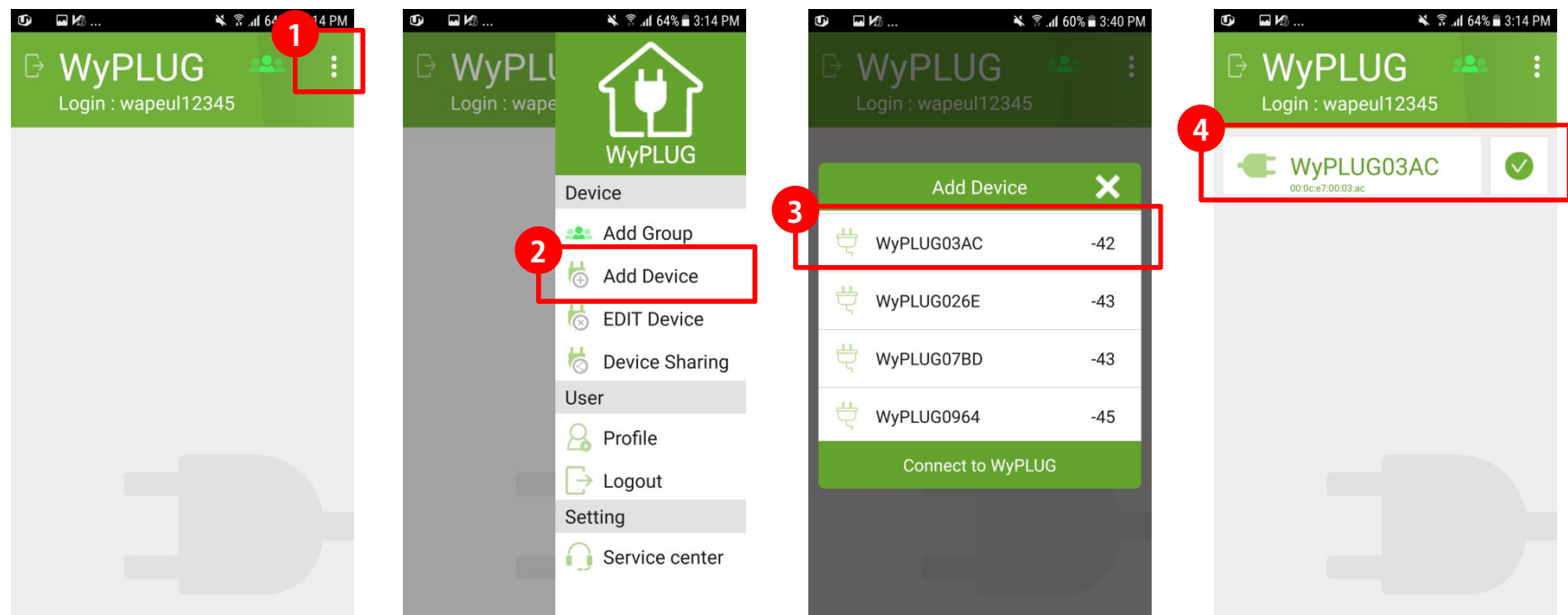
5. Check your email and please click the hyperlink **5**
6. After verifying your email, please login in App.
7. It shows “nothing” in the list in the first login.



5. Add Device

How to add WyPLUG Device

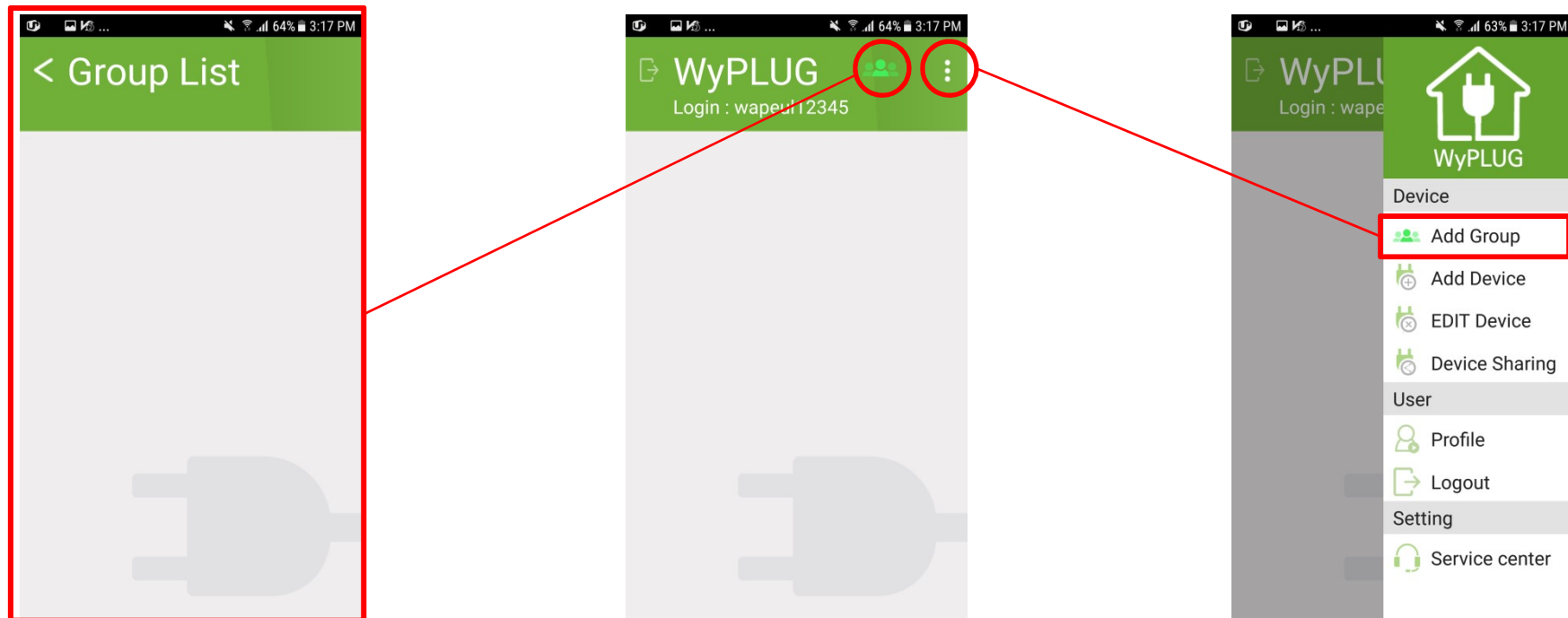
1. In the main screen, click Menu Icon.
2. Click Add Device
3. Choose one SSID which user wants to add (WyPLUG03AC in the following example)
4. Added Device can be checked in the main screen



GROUP

! Maximum 200 numbers of WyPLUG can be added.

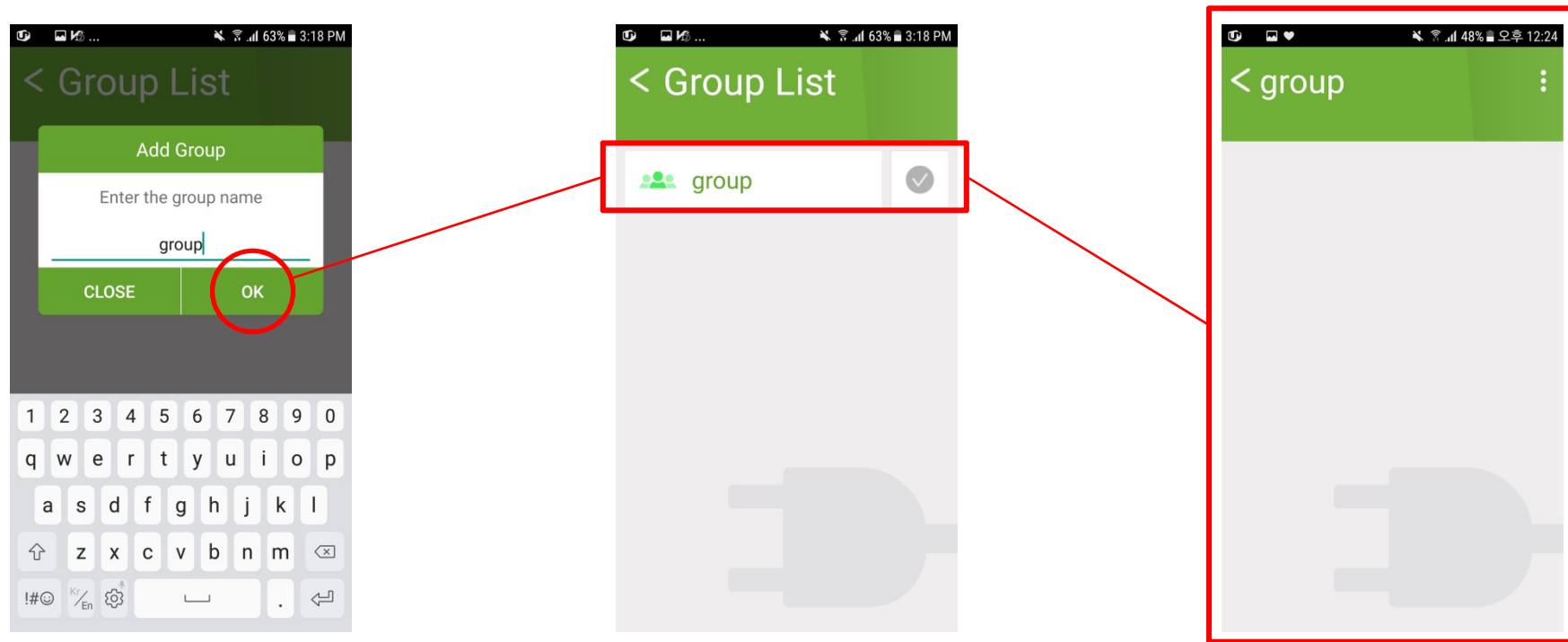
Click People Icon right second icon to see all groups you made.



- You can add Group by clicking “Add Group” sub Menu.

GROUP

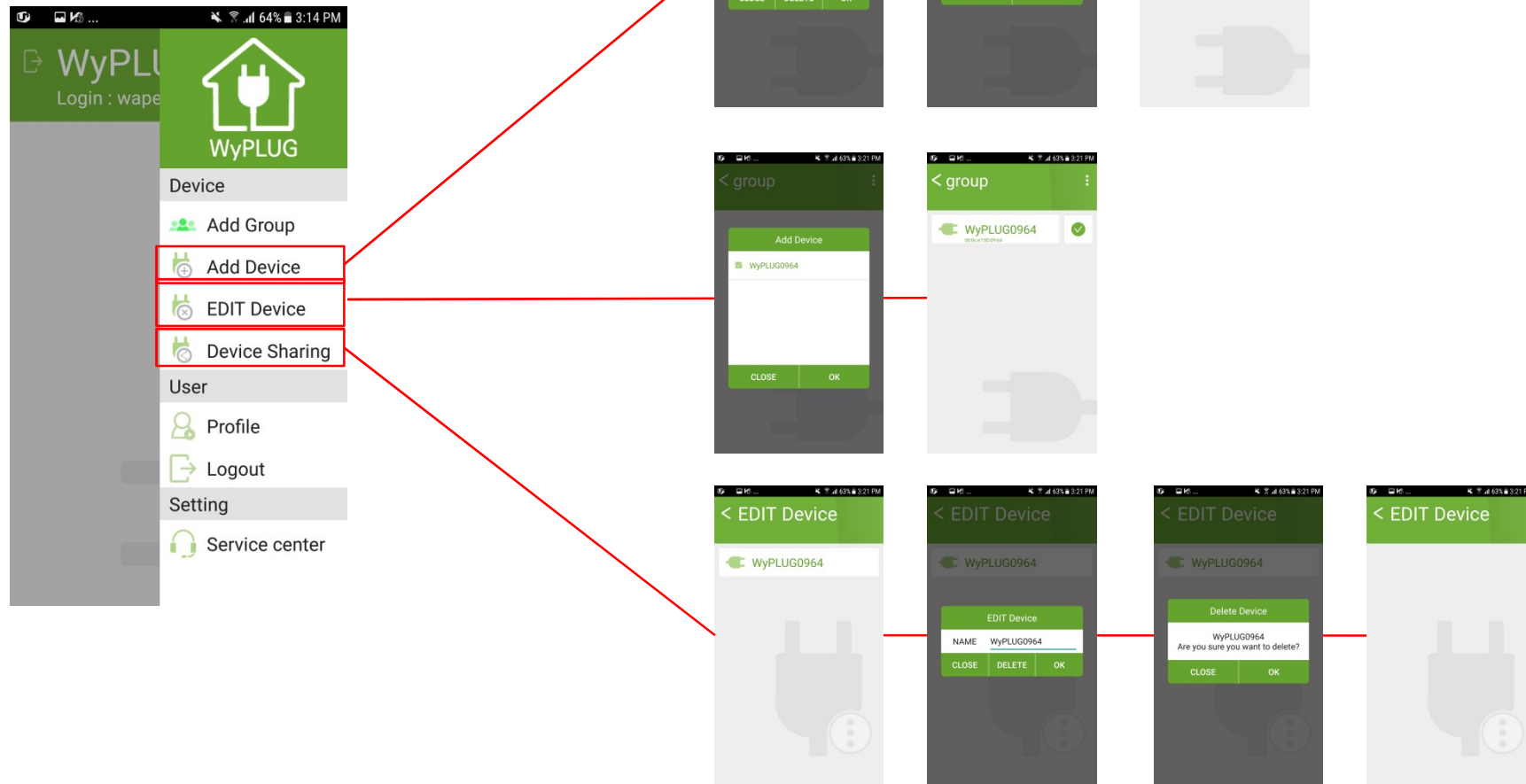
How to add Group



- Enter the group name that you want to add in text box.
- If you created a Group named “group”, you can click the Group list to see device list in the Group

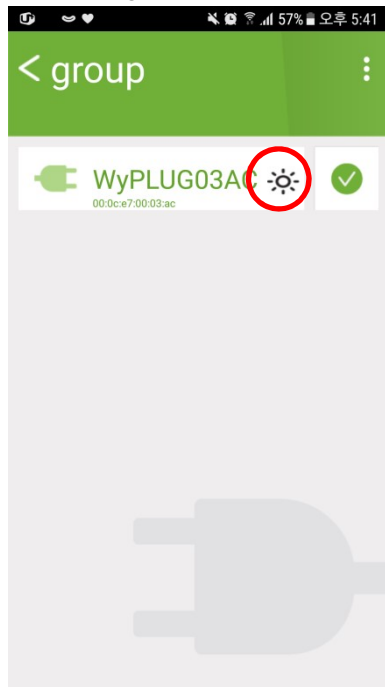
GROUP

Add/Edit/Share Device



GROUP

Group Device will show “Power saving” icon depending upon your power On/Off control Activity.



Active : Within 24 hours, WyPLUG socket has been controlled to save Standby Power consumption



Normal : WyPLUG socket has not been controlled over 24 hours



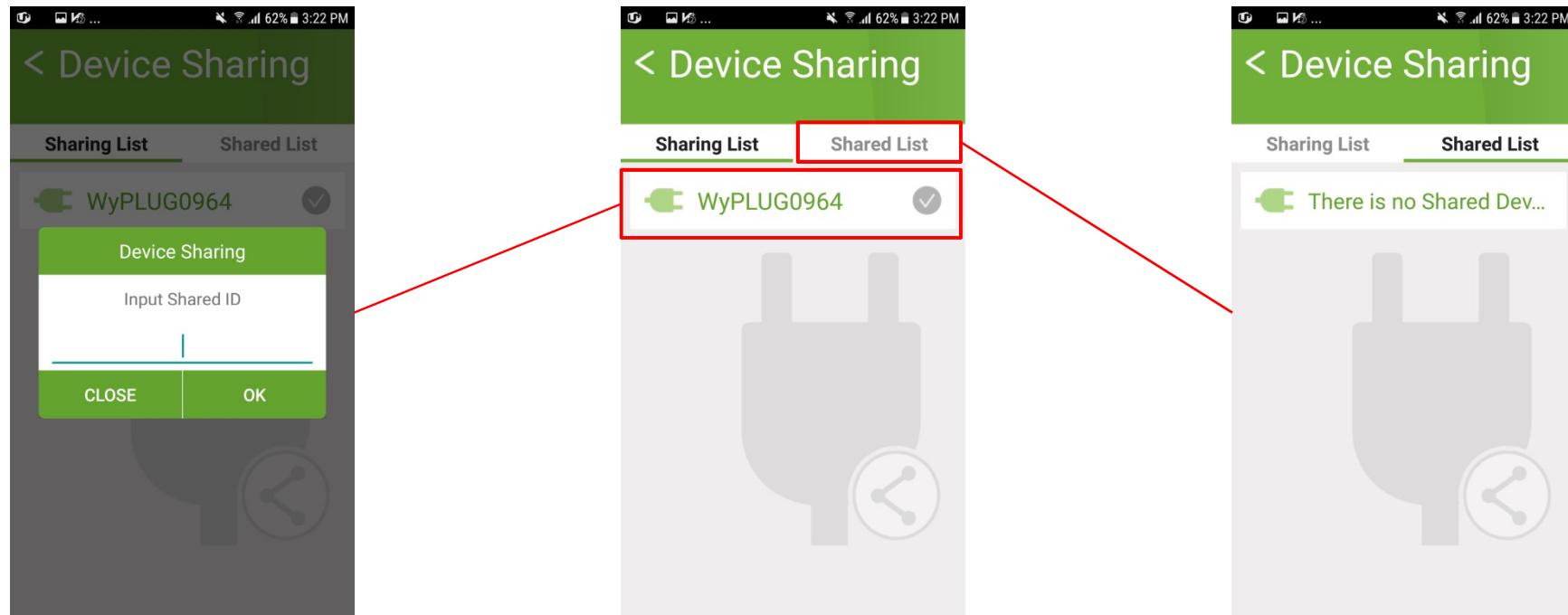
Need to control your WyPLUG sockets: WyPLUG socket has not been controlled over 72 hours

- This Power Saving Icon only can be shown in Group list

Device Sharing

⚠ WyPLUG can be controlled by many shared people

Try sharing your WyPLUG socket controls



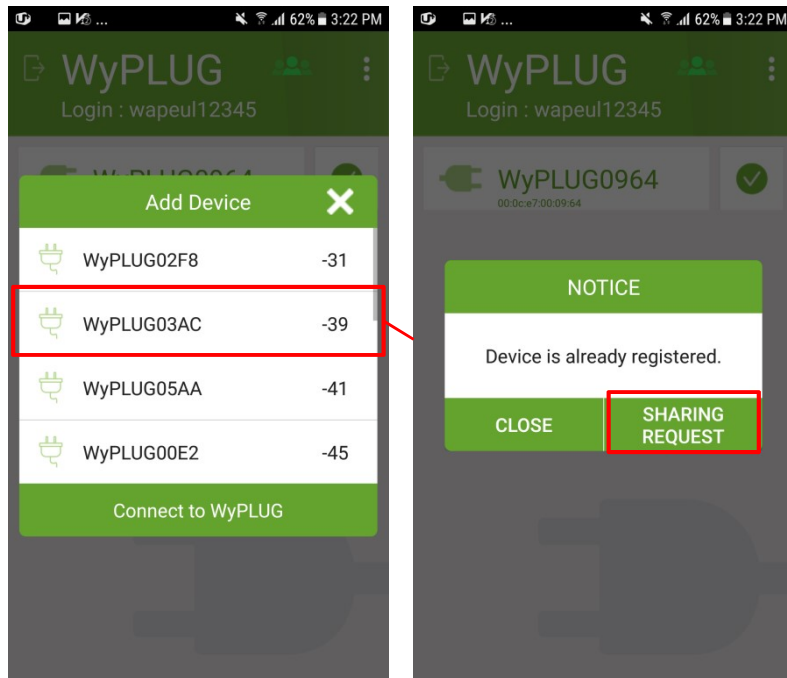
- Click “Device Sharing” > input shared ID which you want to share with. Shared ID User will be get notified through Application Notice

Device Sharing



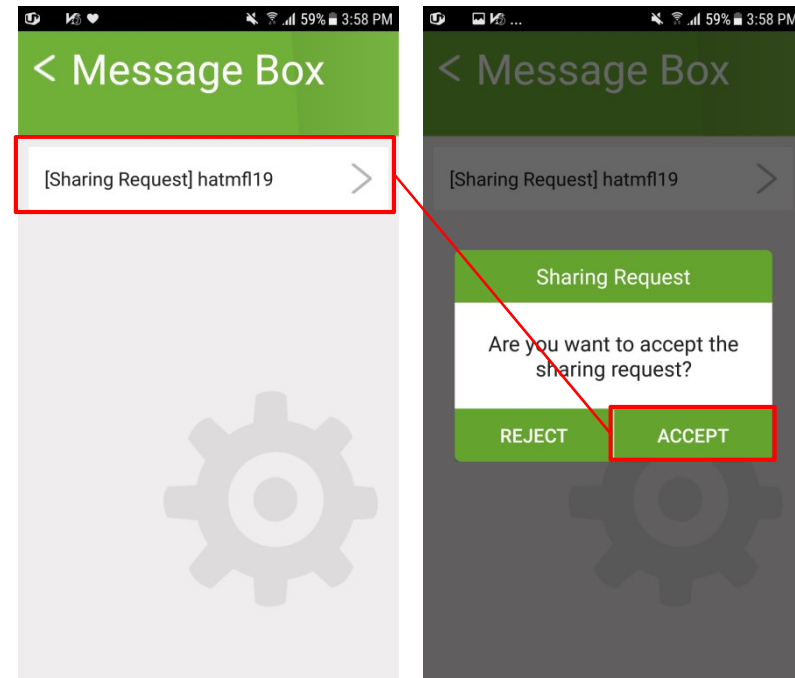
If a User want the WyPLUG to be shared, she/he can send Sharing request message which will be shown in Message Box
(Note: if the Push alarm is off, Popup will be snoozed.)

Requesting Device Sharing Request



► A User requiring “Sharing Device”

· A User requiring “Sharing Device” - Requesting “Sharing Device”



► A User got requested message by other user.

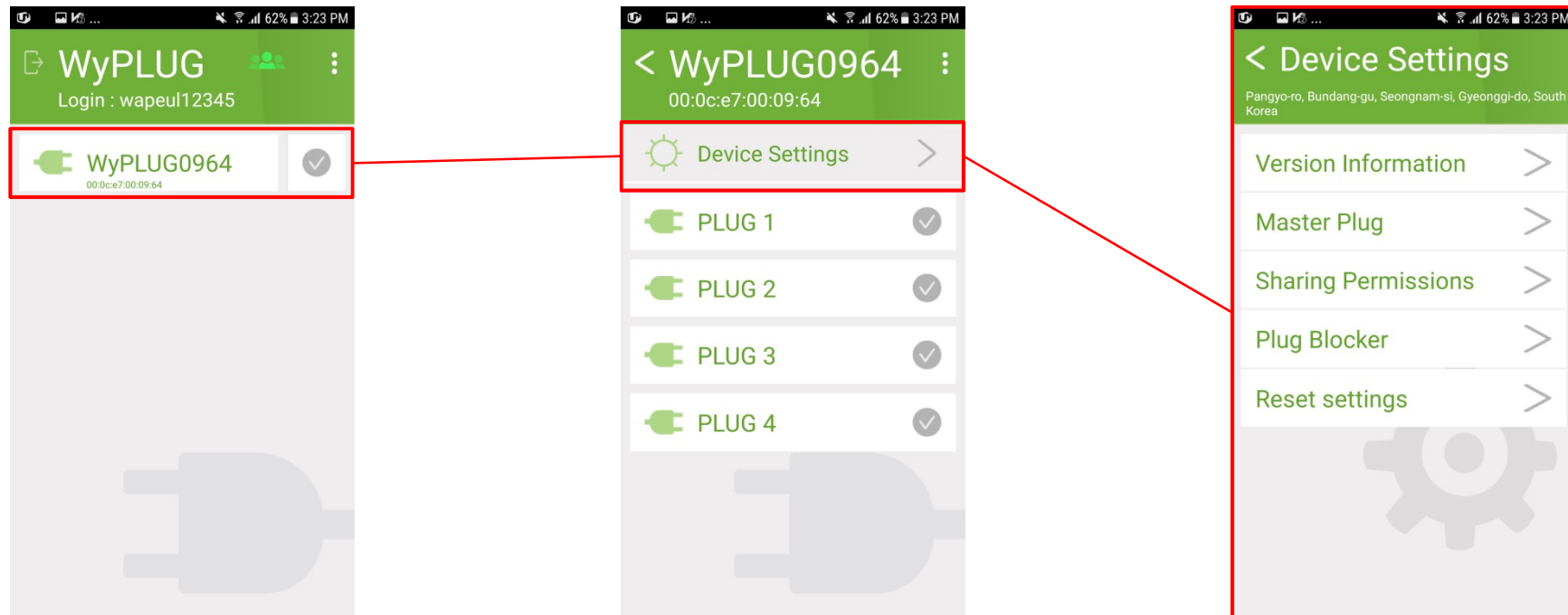
· Requested User's App - Get Requesting “Sharing Device” Message

Device Setting and Information



In main screen, you can click a device in device list. In Device, Device Settings will be shown

Please Check Device setting and information

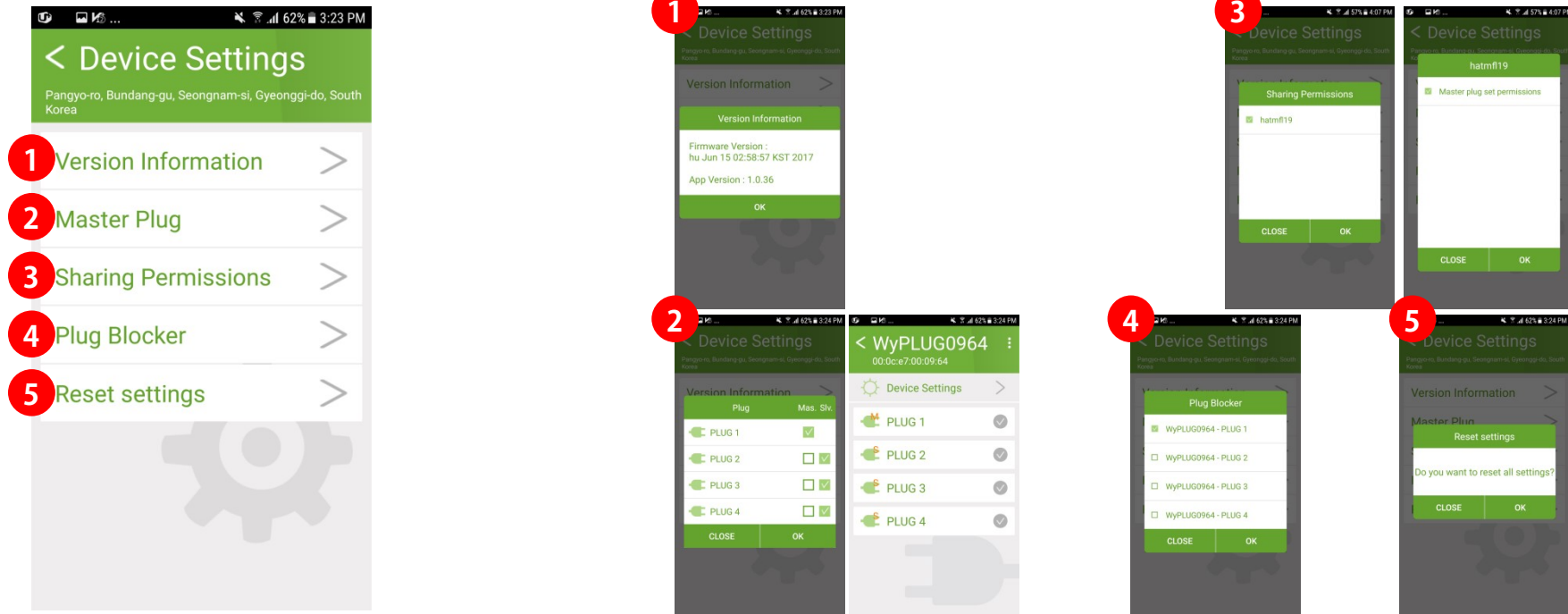


Device Setting and Information



In main screen, you can click a device in device list. In Device, Device Settings will be shown

Device Setting and information

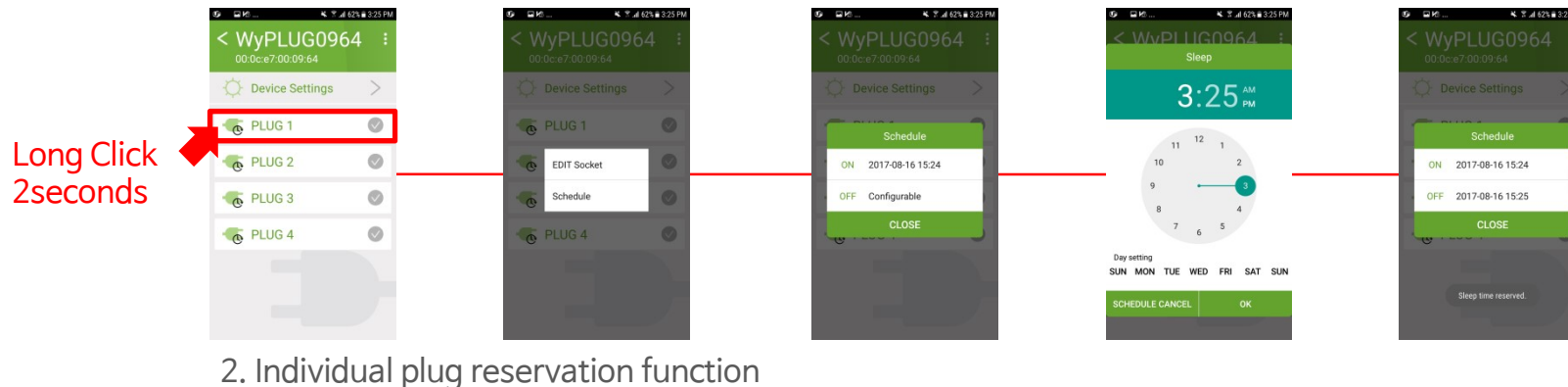
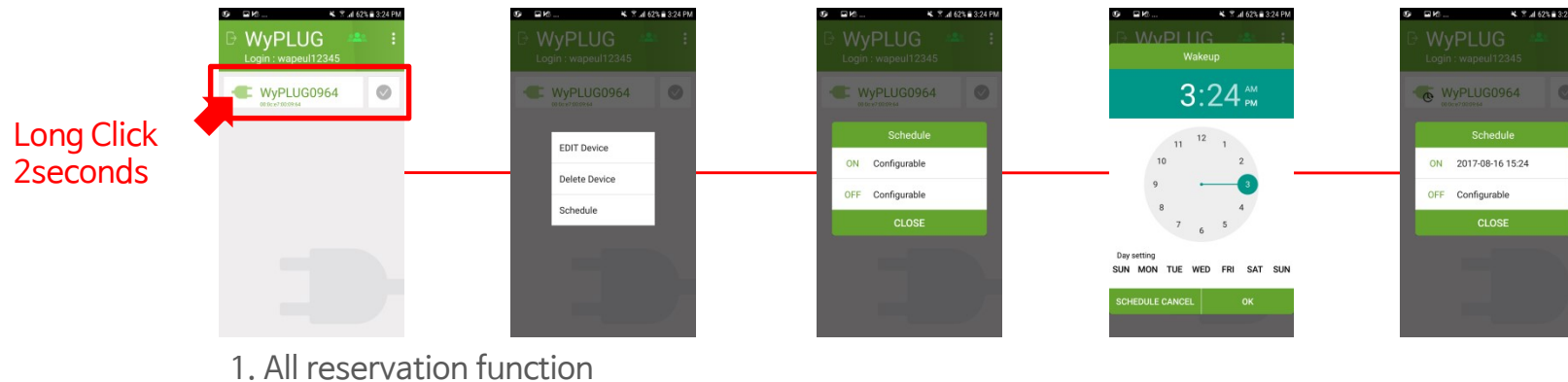


- Version information/Master Plug setting/ Sharing permission setting/ Setting initialization will be shown
- Master Plug will set one Master socket and multiple other socket to be slave. If Master plug socket is on, then accordingly slave sockets will be on and vice versa.

Schedule

! WyPLUG can schedule on/off time with repetition or without repetition.

Try Scheduling

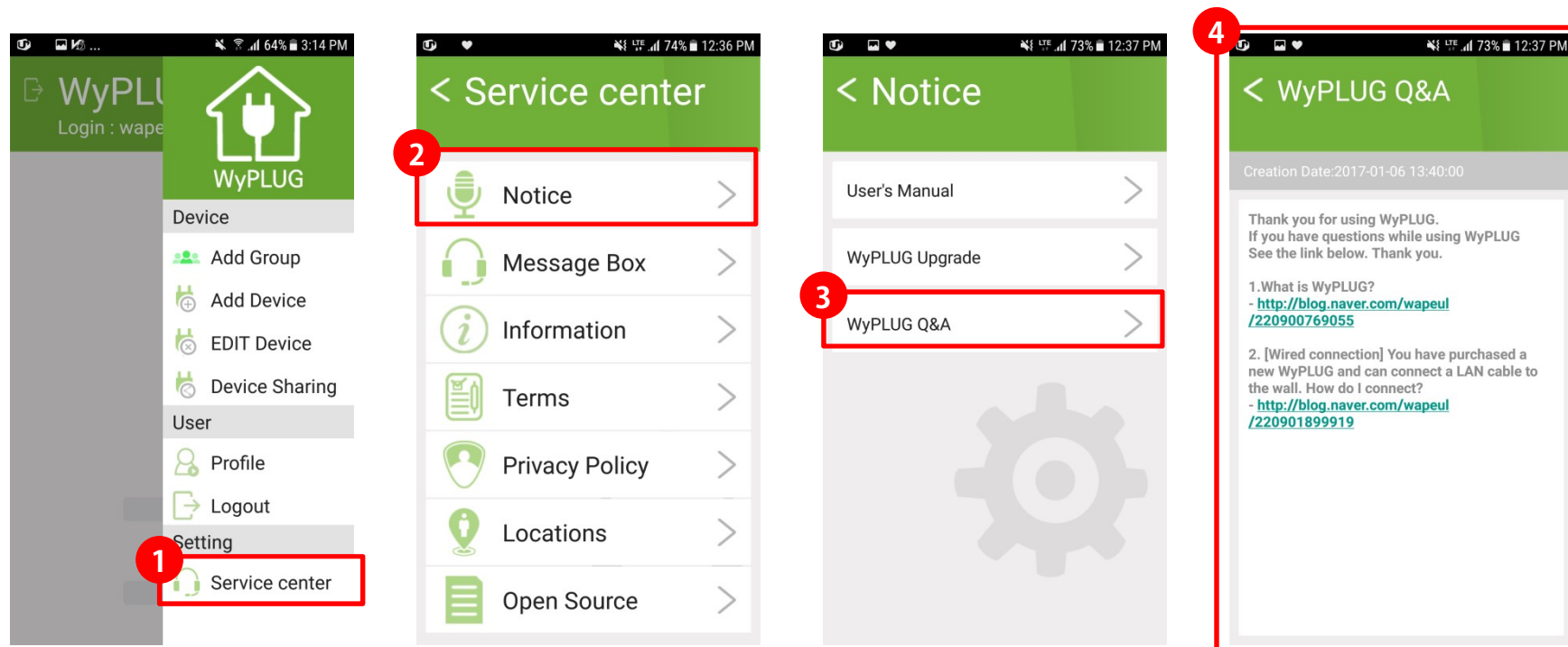


1. On the main screen, press and hold the WIPE button for a certain period of time (approximately 2 seconds) to display the menu with the reservation settings.
2. This is the same as the entire reservation method, and pressing and holding the respective button for a certain period of time (approximately 2 seconds) will display a menu with reservation settings.

Q&A

⚠ If you have any questions about setting up and using the WyPLUG, please refer to the app's Customer Center – Notice – Q & A

Please refer to the item-specific links in the Q & A!



Please use the service of the customers on the WyPLUG blog and refer to the link in the Q & A format for the most frequently asked questions.

Specification

Category	Role	Function
CPU	CPU	MIPS24KEc(580MHZ)
	DRAM Controller	16bit
	Package	DRQFN148-12mm x 12mm
RAM	DDR	512Mbit, 193MHZ
Flash	SPI Flash	128Mbit
WIFI	Wireless frequency	2.4GHz
	Wireless Interface	802.11b/g/n
	Transmission rate	300Mbps(2T2R)
	Antenna	Built-in-PCB Antenna x 2
Ethernet	Interface	1 x 10/100Mbps
LED	1 x WIFI / 4 x Socket	
ETC	1 x Reset Button / 1 x Power Switch	
Rated Voltage/Current	250V / 10A	
Recommended Usage	2,200W (By socket 2,200VA)	
SMPS	Input : 110-220 VAC Output : 5V / 1.5A	
Product Size	304 X 60 X 40 (mm)	

Quality assurance

- We guarantee the product with defects during normal use from the date of first purchase for 1 year.
- Changes to the owner of the product may limit its warranty.
- Damage caused by natural disasters or customer negligence is not guaranteed.
- We do not guarantee any disassembly or modification of the product.

Guidelines for product usage

- Use wall outlets or dedicated outlets for air conditioners / heaters / steam appliances / dedicated kerosene
- Do not use high capacity such as air conditioner, electric heater and so on. (Cause of overload)
- Please use less than 10A (2,000W) where the overload cut-off / earth leakage breaker is installed.
- This product is for indoor use only. Never use it in a place with high temperature and high humidity.
- Do not loosen wires, use them, and do not damage (press, scratch, peel, etc.).
- Never plug anything other than a plug (chopsticks, nails, screwdrivers, etc.) into the outlet opening.
- Do not disassemble or modify the product.
- Replace plugs that are fully plugged and loose.
- Because the radio equipment is capable of radio interference, services related to personal safety can not be performed.
- This equipment is intended for home use (Class B) and is suitable for home use as an electromagnetic compatibility device and can be used in all areas.

Model	User manual
Class B devices (Home Broadcasting Communication Equipment)	This equipment is intended for home use (Class B) electromagnetic compatibility equipment, and can be used in all areas.

FCC Warning:

This equipment has been tested and found to comply with the limits for a Class B digital device, pursuant to part 15 of the FCC Rules. These limits are designed to provide reasonable protection against harmful interference in a residential installation. This equipment generates, uses and can radiate radio frequency energy and, if not installed and used in accordance with the instructions, may cause harmful interference to radio communications. However, there is no guarantee that interference will not occur in a particular installation. If this equipment does cause harmful interference to radio or television reception, which can be determined by turning the equipment off and on, the user is encouraged to try to correct the interference by one or more of the following measures:

- o Reorient or relocate the receiving antenna.
- o Increase the separation between the equipment and receiver.
- o Connect the equipment into an outlet on a circuit different from that to which the receiver is connected.
- o Consult the dealer or an experienced radio/TV technician for help.

Caution: Any changes or modifications to this device not explicitly approved by manufacturer could void our authority to operate this equipment.

This device complies with part 15 of the FCC Rules. Operation is subject to the following two conditions:

- 1) This device may not cause harmful interference, and (2) this device must accept any interference
- 2) Received, including interference that may cause undesired operation.

This equipment complies with FCC radiation exposure limits set forth for an uncontrolled environment. This equipment should be installed and operated with minimum distance 20cm between the radiator & your body.

