

CONTENT

1. Safety Information	1
2. CD NOTE.....	1
3. BUTTON DESCRIPTION	2
4. INPUT SECURITY CODE	4
5. CHANGe SECURITY code.....	4
6. OPERATION GUIDE	6
7. RADIO SETTING	6
8. CD/USB/SD/AUX SETTING	6
9. AUDIO SETUP & SYSTEM SETUP	7
10. BLUETOOTH	8
11. MAINTENANCE	8
12. Connector Pin Definition	9
13. ELECTRICAL SPECIFICATION	9
14. TROUBLE SHOOTING	10

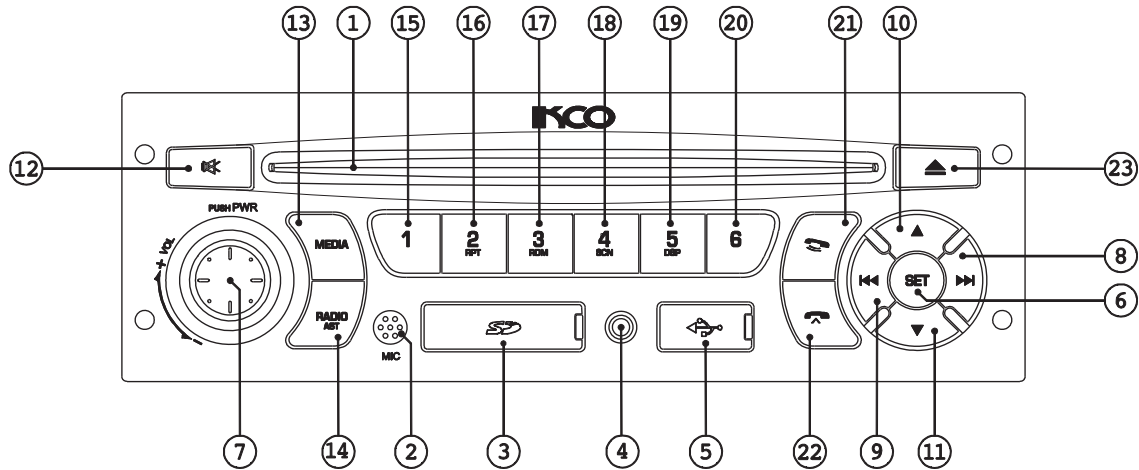
1. SAFETY INFORMATION

- Use only a 12-VDC negative ground electrical system.
- Be sure to connect the color coded leads according to the diagram.
- Incorrect connections may cause the unit to malfunction or damage the vehicles, electrical system.
- Be sure to connect the speaker (-) leads to the speaker (-) terminal.
- Never connect the left and right channel speaker cables to each other's or to the vehicle body.
- Make sure all the connections are completely correct before turning on your unit.
- Using a fuse with a higher amperage rating may cause serious damage to the unit.
- Don't attempt to disassemble the unit. Laser beams from the optical pick up are dangerous to the eyes.
- Make sure those pins or other foreign objects do not get inside the unit; they may cause malfunctions, or create safety hazards such as electrical shock or laser beam exposure.
- Keep the volume at a level at which you can hear outside warning sounds (horns sirens, etc.).
- Stop the vehicle before carrying out any operation that could interfere with your driving.
- Don't work in extremely high or low temperature.
- Don't open covers and do not repair yourself. Consult the dealer or an experienced technician for help.

2. CD NOTE

- Playing a defective or dusty CD can cause dropouts in sound. Hold CDs as illustrated.
- Don't touch the unlabeled side. Avoid making fingerprint on the disc when handling it.
- Don't attach any seal, label or data protection sheet to either side of a disc.
- Don't expose a CD to direct sunlight or excessive heat. Wipe a dirty CD from the center outward with a cleaning cloth.
- Don't use disc with labels or stickers attached, which may leave a sticky residue while beginning to peel off.
- Never use solvents such as benzene or alcohol.
- Never insert a 3-inch CD contained in the adapter or an irregularly shaped CD. The unit may not be able to eject it, resulting in a malfunction.
- Dust tends to accumulate in the CD slot, clean it every once in a while. Your CDs can get scratched if you put them in a dusty CD slot.
- Playing a CD that is dirty, scratched or warped can cause the sound to skip and the unit to operate incorrectly, resulting in worsened sound quality.
- Take the following precautions to prevent your CDs from getting scratched or damaged.
- Put the disc back in the box immediately after ejecting.
- Don't expose the disc to heat and direct sunlight.
- Clean the CD frequently with commercially available cleaning cloth or soft cotton cloth.

3. BUTTON DESCRIPTION



Description	Item
AUX Socket	4
USB Flash Cover	5

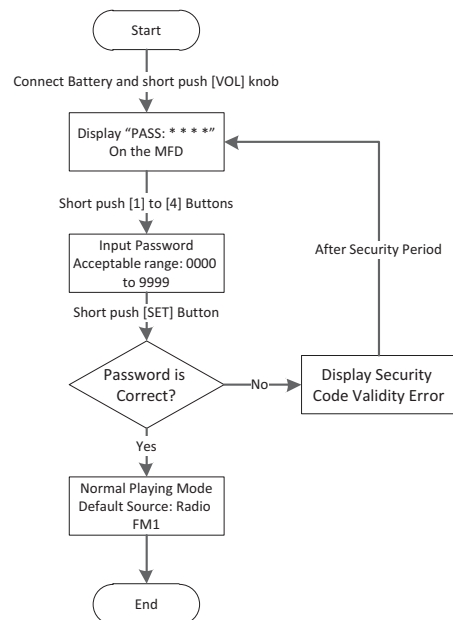
Description	Item
CD Slot	1
Microphone	2
SD Memory Cover	3

System Setup Mode	Audio Setup Mode	Calling Mode	Phonebook	BT Audio	CD/USB/SD	Tuner	Action	Name	Item
Change Setup Items	-	-	-	Enter To System Setup Mode			Short Push	SET	6
Exit From Setup	-	-	-	-	-	-	Long Push		
Enter to Sub Menu	Change Setup Items	-	Load Contact Data	In Power Off State: Power On / In Power On State: Enter to Audio Setup Mode			Short Push	Volume	7
Power Off							Long Push		
Change Parameters	Change Parameters	-	Next/Previous Contact	Adjust Volume Level			Rotate		

Calling Mode	Phonebook	BT Audio	CD/USB/SD	Tuner	Action	Name	Item
-	-	Next Track		Search Next Station Automatically	Short Push		8
-	-	Fast Forward		-	Long Push		
-	-	Previous Track		Search Previous Station Automatically	Short Push		9
-	-	Fast Rewind		-	Long Push		
-	Next Contacts Group	-	Next Folder	Manual Tuning to Up	Short Push		10
-	-	-	Track +10 in Current Folder	-	Long Push		
-	Previous Contacts Group	-	Previous Folder	Manual Tuning to Down	Short Push		11
-	-	-	Track -10 in Current Folder	-	Long Push		
Mute Microphone	PAUSE / MUTE	Pause		Mute	Short Push		12
-	-	-	-	-	Long Push		
-	-	Select Source (CD ▶ USB ▶ SD ▶ BT ▶ AUX ▶ CD)		Return To Previous Media	Short Push	MEDIA	13
-	-	-	-	-	Long Push		
-	-	Return to Previous Tuner Band Mode		Select Band (FM1 ▶ FM2 ▶ FM3 ▶ AM1 ▶ AM2)	Short Push	RADIO AST	14
-	-	-	-	Store Stations Automatically	Long Push		
-	-	-	-	Recall Preset 1	Short Push	1	15
-	-	-	-	Store Preset 1	Long Push		
-	-	-	Repeat File / Folder	Recall Preset 2	Short Push	2 RPT	16
-	-	-	-	Store Preset 2	Long Push		
-	-	-	Random Folder / All	Recall Preset 3	Short Push	3 RDM	17
-	-	-	-	Store Preset 3	Long Push		
-	-	-	Scan	Recall Preset 4	Short Push	4 SCN	18
-	-	-	-	Store Preset 4	Long Push		
-	Display Contact Name / Number	Display ID3 Information	Display Folder Name/ID3 Information	Recall Preset 5	Short Push	5 ID3	19
-	-	-	-	Store Preset 5	Long Push		
-	-	-	-	Recall Preset 6	Short Push	6	20
-	-	-	-	Store Preset 6	Long Push		
Private / Talking Mode	Call Out	After Pairing: Go to Phonebook Menu – When Received Call: Accept Incoming Call			Short Push		21
-	-	-	If it's Not Paired: Start Auto Pairing		Long Push		
End / Reject Call	Exit From Phonebook	-	-	-	Short Push		22
-	-	After Pairing: Disconnect			Long Push		
-	-	Eject / Reload Disk			Short Push		23
-	-	-	-	-	Long Push		

4. INPUT SECURITY CODE

When initiating the unit, "PASS: ****" will display on the MFD, the user is required to input a 4-digit password by 0 to 9 digits and press [SET] button to confirm it. If the password is right, the unit can be accessed. If the password is wrong, input the password again according to the instruction. Enter to error mode, shows "ERROR 01" to "ERROR 20" for specific time. The unit will be locked after 20 continuous wrong password input. The defaulted password is 1111.



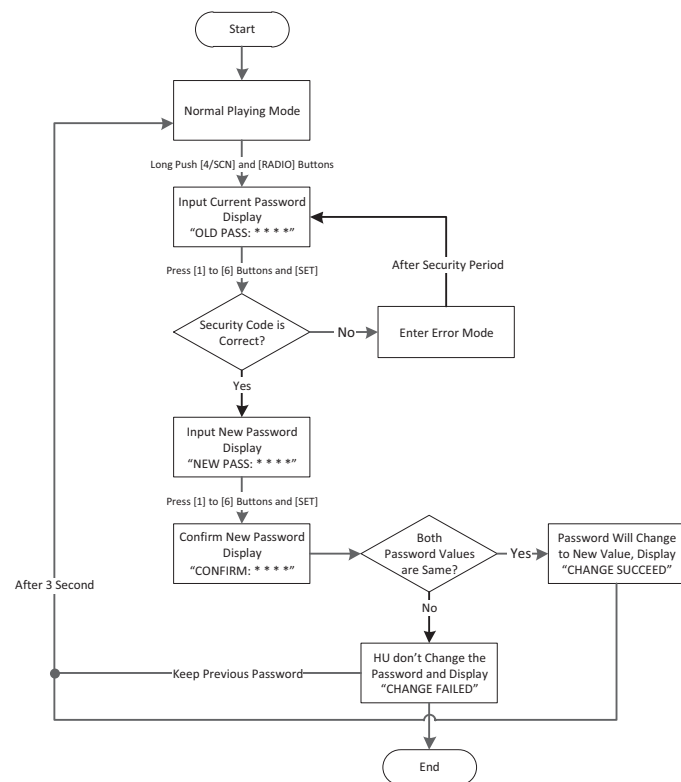
Security Period	Error No.
2 second	ERROR 01
30 second	ERROR 02
2 minute	ERROR 03
10 minute	ERROR 04
20 minute	ERROR 05
60 minute	ERROR 06-19
Permanent lock	ERROR 20

5. CHANGE SECURITY CODE

Press both [4/SCN] and [RADIO] buttons for 2 seconds to set a new password. When MFD displays "OLD PASS: ****", input 4-digit old password by 0-9 digits and press [SET] button to confirm it. New password will be required to input if the old password is rightly input, otherwise the error display will instruct the user be back to old password input interface. The unit will be locked after 20 continuous wrong password input.

After inputting a 4-digit new password, the MFD displays "NEW PASS: *****" and the new password should be input, after first inputting new security code you should confirm it, so MFD display "CONFIRM: *****" and the new password need to input again. If both the first and the second password values are the same MFD display "CHANGE SUCCEED" and return to normal playing mode, otherwise will display "CHANGE FAILED" on the MFD and return to previous working interface by keeping previous security code.

If user hopes to change password, follow below flowchart:



Security Period	Error No.
2 second	ERROR 01
30 second	ERROR 02
2 minute	ERROR 03
10 minute	ERROR 04
20 minute	ERROR 05
60 minute	ERROR 06-19
Permanent lock	ERROR 20

6. OPERATION GUIDE

6.1. GENERAL OPERATION

POWER ON/OFF

Press the [VOLUME] knob to turn on the unit and press and hold the knob to turn off the unit.
In system on mode, press the knob to enter audio setup menu.

MEDIA BUTTON

In radio mode, press this hard key can return to the pervious media.
Press the button to select the playback modes in the following turns:

CD ▶ USB ▶ SD ▶ BT ▶ AUX ▶ CD

ADJUST VOLUME LEVEL

Rotate the button clockwise to increase the volume level and rotate the button anticlockwise to decrease the volume level. The volume range is 0-30.
NOTE: Please make sure you can still hear the traffic sounds (horns, sirens, etc.)

7. RADIO SETTING

7.1. RADIO SWITCH

Press the button to select the radio mode and press repeatedly to switch the bands in the following turns:

FM1 → FM2 → FM3 → AM1 → AM2

7.2. AUTO SEARCHING

Press the button ►► to search stations upwards automatically; or button ◄◄ for a lower frequency.

7.3. MANUAL SEARCHING

Press ▲ and ▼ buttons to search stations upwards/downward manually.

7.4. AUTO STORING

Press and hold [RADIO] button for 2 second, store station automatically.

If the current band is FM, the stations will store to FM3, if the current band is AM, the stations will store to AM2.

If AST successes, it will automatically play the first preset of FM3/AM2 band.

NOTE: When you use Auto-Store, the new stations will replace any previously stored stations in the FM3/AM2 band.

7.5. PRESET STATIONS

You can manually store one favorite station in a preset, and recall by using the preset buttons (1 to 6). Press and hold the desired preset [1] to [6] buttons for more than 2 seconds (till you hear a "beep" sound) to store the current tuned station.

NOTE: Any stations that were previously stored in this memory band are replaced by the new stations.

7.6. RECALLING A PRESET

Press the desired preset button (1 to 6) to recall the stored station.

8. CD/USB/SD/AUX SETTING

8.1. CD/MP3 PLAYING

Insert CD to the CD slot or press [MEDIA] button when there is CD in the deck, to enter the CD or MP3 disc player mode.

Display will show: Number of currently playing track and elapsed time.

NOTE: The unit is designed for play of standard 5" (12 cm.) compact discs only. Do not attempt to use 3" (8 cm.) CD singles in this unit, either with or without an adaptor, as damage to the player and/or the disc may occur.

8.2. PLAY/PAUSE

Press the ◀ button to freeze disc playback. Press again ▶ button to resume disc playback.

8.3. REPEAT TRACK

During disc play, press the [2/RPT] button to select "REPEAT FILE" and repeatedly play the selected track. In MP3 mode, press button again to select "REPEAT FOLDER" and repeatedly play all tracks in the current folder. Repeat play will continue until RPT is pressed to select "REPEAT OFF".

8.4. RANDOM TRACK

Press [3/RDM] button to enable random folder play function and play all tracks on the current folder in random mode. Press button again to select "RANDOM ALL" and play all tracks on the current media in random mode.

Press next track during random mode, select a track randomly to play.

Press button [3/RDM] again to disable random track play by display "RANDOM OFF" message.

8.5. SCAN TRACK

The scan function enables you to listen to the first 10 seconds of each track.

Press [4/SCN] button to activate/deactivate scan track.

8.6. NEXT / PREVIOUS TRACK

Press the ►► button during disc play to select the beginning of the next track.


If the elapsed time is more than 2S, Press the ◄◄ button during disc play to select the beginning of the current track. Press twice to select the beginning of the previous track.

Press and hold ►► or ◄◄ buttons to fast reverse or fast forward through the disc.

8.7. NEXT / PREVIOUS FOLDER SELECTION

Press ▲ button to select next folder when playing MP3 disc. Press and hold ▲ button to select track+10. Press ▼ button to select next folder when playing MP3 disc. Press and hold ▼ button to select track+10.

8.8. EJECT DISC

Press  button to eject disc. Press again to reload the disc.

8.9. CARE OF DISC

Avoid making fingerprints on the disc when you take it out.

Put the disc back in its box immediately after you eject it, to protect the disc from dirt and dust.

Do not expose the disc to heat or direct sunlight.

8.10. DISPLAY FILE INFORMATION

When at normal MP3 playing mode, MFD display folder number (D), track number (T) and elapsed time in first line and file name in second line.



By short press [5/DSP] button, system scrolls folder name in second line and after that return to file name displaying mode, if you press [5/DSP] button during folder name scrolling, system will be scrolled ID3 information. After a while scrolls ID3 information then returns to normal mode.

8.11. PLUGIN EXTERNAL USB MEMORY DEVICE/SD CARD

Insert USB device or SD card:

1. Wait for several seconds the audio files in USB or SD will play automatically with the USB or SD-CARD flag on the front panel flashing.
2. When there is USB, SD in the unit, press MEDIA button to select USB or SD source.
3. When playing, insert a USB device. SD card or disc, the last insert device (disc) will play automatically.

8.12. NOTES ON MP3

- The unit cannot read an MP3 file that has a file extension other than MP3.
- The display support English and Persian language Characters also digits.
- The unit can display the file / folder / title / artist / album name of maximum 30 characters.
- Make sure that MP3 CD is burned in format as a data disc and NOT as an audio disc.
- To enjoy high quality sound. It is recommended to convert the MP3 files with a sampling frequency of 44.1 kHz and fixed bit rate of 128kbps or higher.

8.13. USB MEMORY MUSIC DECODING CLARIFICATION

- The unit supports USB playing, but not completely supports USB MP3 playing with USB HOST.
- The unit supports USB device with formats of FAT12/16/32. If the USB device is divided into two districts, the unit will read only the first district with format of FAT12/16/32; otherwise, the unit cannot read the USB.
- Don't connect the mobile hard disc drive to the unit; otherwise, overload reading may lead to malfunction in the unit.
- The unit cannot support the memory devices like USB Hub and so on.
- Please use a USB device manufactured legally.
- File format: *.mp3, *.MP3, *.WMA
- Support memory size: 32GB
- Sample Rate: 8 KHz~48 KHz
- Bit Rate: 32~320kps

NOTE: The unit will initialize and search MP3 files when you plug USB memory device/ SD Card. This will take several seconds; please do not unplug the USB memory device/ SD Card during this period.

8.14. AUX IN

In other media source mode, short press to access to media source page. Short press continually MEDIA or short press the corresponding preset key to select the audio source to play.

Insert audio cord, press MODE button on the unit to switch to AUX mode.

TIPS:

- The AUX slot of the unit is designed with auto detection. AUX cable being inserting, the system will detect and start turning to AUX audio playing mode.
- Please connect the AUX cable in a lower volume level to avoid serious distortion caused by large-signal audio source input with the high volume level.

9. AUDIO SETUP & SYSTEM SETUP

9.1. AUDIO SETUP

After each short push [VOL] knob, the order of submenus changes as below:

Parameter	Value	Default
EQUALIZER	POP, CLASSIC, ROCK, JAZZ, OFF	OFF
BASS	-7 TO +7	0
TREBLE	-7 TO +7	0
BALANCE	7L TO 7R	L=R
FADER	7R TO 7F	F=R
LOUD	ON, OFF	OFF

When at 6-Loudness, short push [VOL] knob will exit audio setup mode, return to previous source.

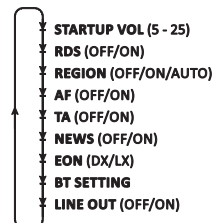
Select any one of the above settings and rotate the knob to set up.

Remark: Auto exit is after 5s without operation. EQ item will display selected mode.

Only EQ OFF item at the submenu is selected, Bass and Treble can be adjusted.

9.2. SYSTEM SETUP

After each short push [SET] button, the order of submenus changes as below:



Select any one of the above settings and rotate the knob to setup.

Remark: Auto exit is after 5s without operation.

10. BLUETOOTH

10.1. PAIRING BY MOBILE PHONE

In Bluetooth unpaired mode, long press button to access to the pairing page. Search the Bluetooth name "P6L RADIO" in the mobile and the password is "1234". The pairing will quit in 2 minutes failure. The pairing-in-progress can be cancelled by long press on button.

10.2. PAIRING BY RADIO

In Bluetooth unpaired mode, short press [SET] button till to "BT SETTING" menu and press [VOL] knob while BT SETTING displays. Rotate [VOL] knob to "-NEW DEVICE" page and press [VOL] knob again to access to search mobile to be paired then return to the searching mobile list. The searching-in-progress can be cancelled by long press on key.

After searching, rotate [VOL] knob to find the mobile name and press [VOL] key to start pair.

In Bluetooth paired mode, long press key to exit.

10.3. PHONEBOOK

In Bluetooth paired mode, short press key to access to Bluetooth phone main page. In Bluetooth phone mode, rotate [VOL] knob display PHONEBOOK/ MISSED CALL/ DIALED CALL/ RECEIVED CALL, short press to access to each one. If it is the first dialing, the phonebook will be downloaded automatically.

In Bluetooth list mode, rotate [VOL] knob to search contacts and short press to return Phonebook menu.

10.4. SEARCH CONTACT

In Bluetooth phone list, short Press and buttons to jump to the next/previous contacts with the same initial letter. In Bluetooth phone list mode, short press [5/DSP] button to display the contact name or contact number.

10.5. BT AUDIO

In Radio mode, if the last media source is Bluetooth audio, short press [MEDIA] button to switch to Bluetooth audio playing mode.

Short press / buttons to select a next/previous track. Long press buttons to play tracks fast forward / fast forwards.

10.6. INFO DISPLAY

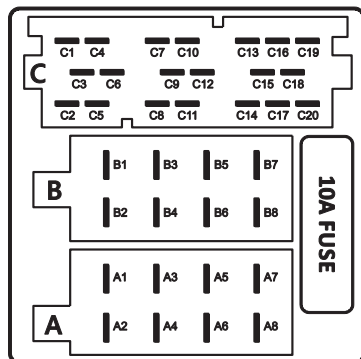
In BT AUDIO default mode HU display ID3 information (Title) in second line, Short press [5/DSP] button to display information such as title, artist and album.

TIP: This is to function only by a mobile that supports Bluetooth and keeps in music playing mode.

11. MAINTENANCE

- Keep the product dry. If it does not get wet, wipe it dry immediately. Liquids might contain minerals that can corrode the electronic circuits.
- Keep the product away from dust and dirt, which can cause premature wear of part.
- Handle the product gently and carefully dropping it can damage circuit boards and cases, and can cause the product to work improperly.
- Wipe the product with a dampened cloth occasionally to keep it looking new. Do not use harsh chemicals, cleaning solvents, or strong detergents to clean the product.

12. CONNECTOR PIN DEFINITION



ISO A			
A1	SWRC -	A2	Tel Mute
A3	SWRC +	A4	BAT
A5	Auto Antenna	A6	ILL
A7	ACC	A8	GND

ISO B			
B1	Rear Right +	B2	Rear Right -
B3	Front Right +	B4	Front Right -
B5	Front Left +	B6	Front Left -
B7	Rear Left +	B8	Rear Left -

ISO C			
C1	LINEOUT LEFT	C2	LINEOUT RIGHT
C3	LINEOUT GND	C4	-
C5	-	C6	Remote AMP
C7	-	C8	SWRC +
C9	-	C10	-
C11	SWRC -	C12	-
C13	-	C14	-
C15	-	C16	-
C17	CAN LS L	C18	-
C19	-	C20	CAN LS H

13. ELECTRICAL SPECIFICATION

GENERAL	
Power Supply	12V DC
Maximum power output	4x25W
Power output @10% T.H.D	4x18W
Speaker impedance	4Ω
Fuse	10A

FM Stereo Radio	
Frequency range	87.50 ~ 108.00 MHz
Usable sensitivity	≤10 dBuV
Frequency response	30 Hz ~ 10 KHz
Stereo separation	≥21dB
IF response ratio	≥60 dB
Image response ratio	≥60 dB

AM Radio	
Frequency range	522 ~ 1620 KHz
Usable sensitivity	≤30 dBuV
Signal to Noise Ratio	≥50dB
IF response ratio	≥70 dB
Image response ratio	≥50 dB

CD/USB Player	
Frequency response	16 Hz ~ 20 KHz
Signal to Noise Ratio	≥75 dB
THD	≤0.3 %
Channel separation	≥60 dB
Max capacity	32 GB

14. TROUBLE SHOOTING

Before going through the check list, check if the wiring connection is well. If any of the problems persist after check list has been made, consult your nearest service dealer.

SYMPTOM	CAUSE	SOLUTION
No power.	The car ignition is not on.	If the power supply is properly connected to the car accessory terminal, switch the ignition key to ACC. (LOGI OFF)
	The fuse is blown.	Replace the fuse.
	Cable is not properly connected	Check cable connection.
Disc cannot be loaded or ejected.	Presence of CD disc inside the player	Remove the disc in the player new one.
The appliance will not play discs.	Inserting the disc in reverse direction.	Insert the compact disc with the label facing upward.
	Compact disc is extremely dirty or defective disc.	Clean the disc or try to play a new one.
	Temperature inside the car is too high.	Cool off or wait until the ambient temperature return to normal.
	The format of the music is not MP3/WMA.	Make sure the format of the music is MP3/WMA.
No sound.	Volume is set at minimum or the mute function is	Check the volume or switch the mute function off.
	Cable is not properly connected.	Check wiring connect.
Sound skips.	Mounting is unstable	Mount the unit securely with the supplied parts.
The radio does not receive the radio station or Poor quality reception of radio station.	The antenna cable is not work or connected	Insert the antenna cable firmly.
	The antenna is not fully extended or it is broken.	Fully extend the antenna and if broken, replace it with a new one.

14. FCC Statement

This device complies with Part 15 of the FCC rules. Operation is subject to the following two conditions: 1) this device may not cause harmful interference, and 2) this device must accept any interference received, including interference that may cause undesired operation.

Note: This equipment has been tested and found to comply with the limits for a Class B digital device, pursuant to part 15 of the FCC Rules. These limits are designed to provide reasonable protection against harmful interference in a residential installation.

This equipment generates uses and can radiate radio frequency energy and, if not installed and used in accordance with the instructions, may cause harmful interference to radio communications. However, there is no guarantee that interference will not occur in particular installation. If this equipment does cause harmful interference to radio or television reception, which can be determined by turning the equipment off and on, the user is encouraged to try to correct the interference by one or more of the following measures:

- Reorient or relocate the receiving antenna.
 - Increase the separation between the equipment and receiver.
 - Connect the equipment into an outlet on a circuit different from that to which the receiver is connected.
 - Consult the dealer or an experienced radio/TV technician for help.
- Changes or modifications not expressly approved by the party responsible for compliance could void the user's authority to operate the equipment.

FCC Radiation Exposure Statement

This device complies with FCC RF radiation exposure limits set forth for an uncontrolled environment. This transmitter must not be co-located or operating in conjunction with any other antenna or transmitter.