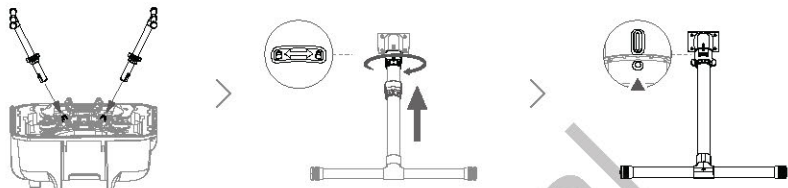


Preparing the Aircraft

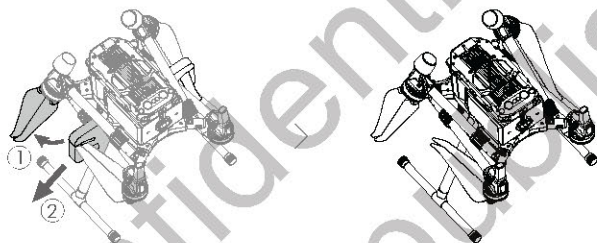
Installing the Landing Gears

Install the landing gears, slide the gear lock to the end of the landing gear, then rotate it about 90° until the dot is in sync with the alignment mark.

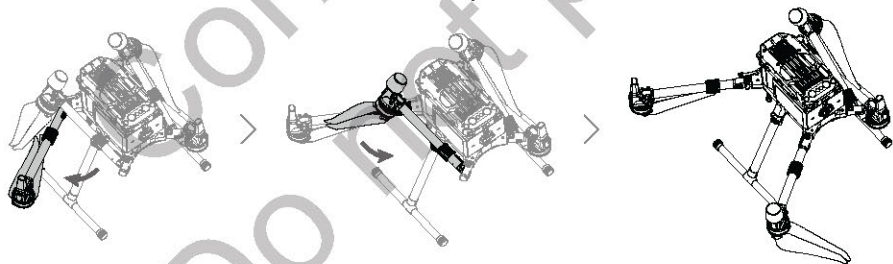


Unfolding the Aircraft

Remove the two propeller holders.



Unfold the frame arms on both sides in the same way.



Lock the frame arms and unfold the propellers.

