

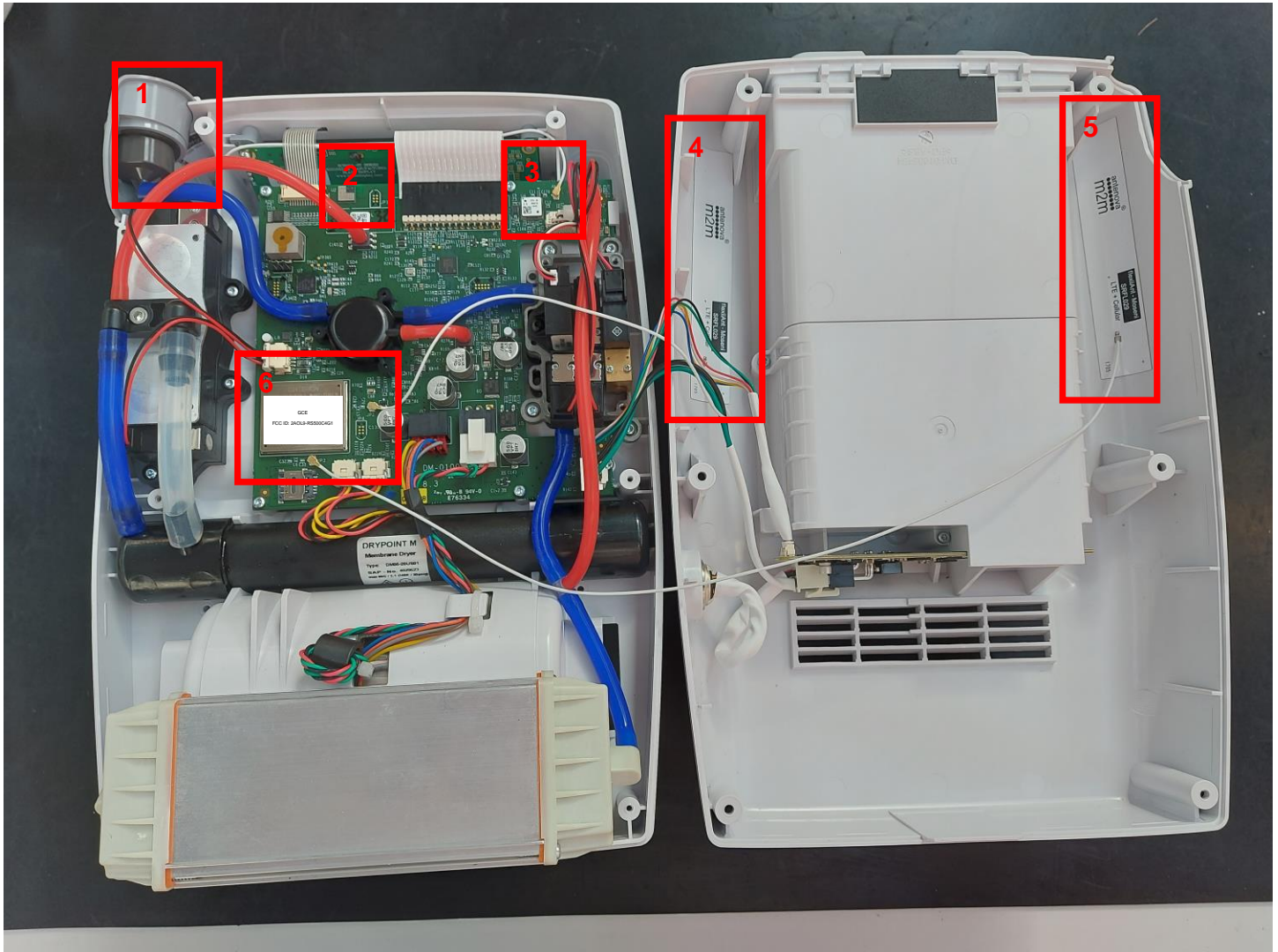
Zen-O Clarity Internal Photos

Revision	Release Date	ECO No	Created by	Notes
1	25/08/2020	E1157	W Turner	First Release

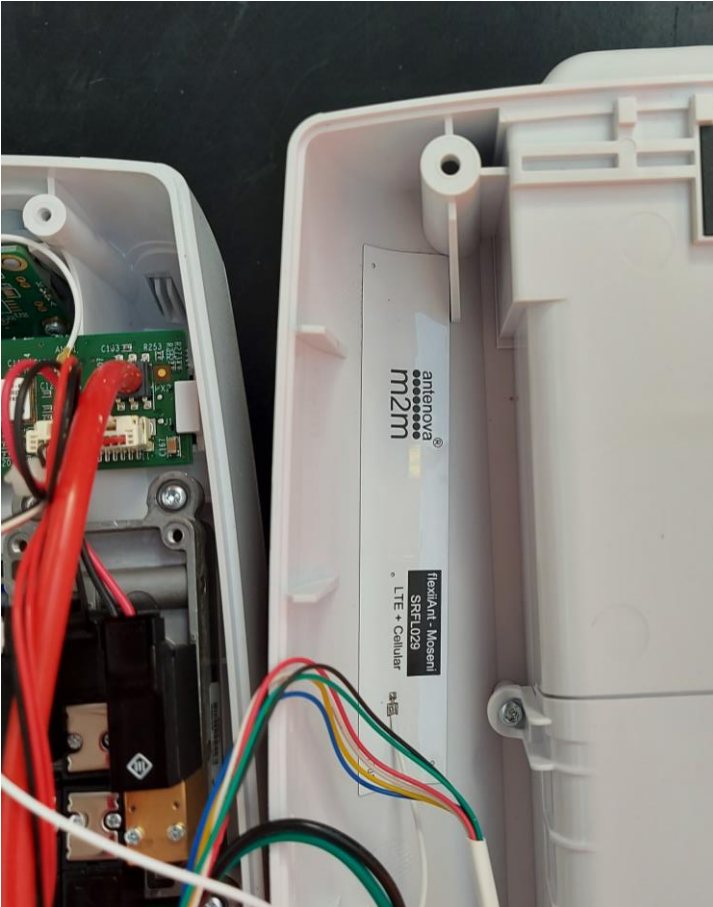
Unit Front Cover Removed



Rear Cover Removed



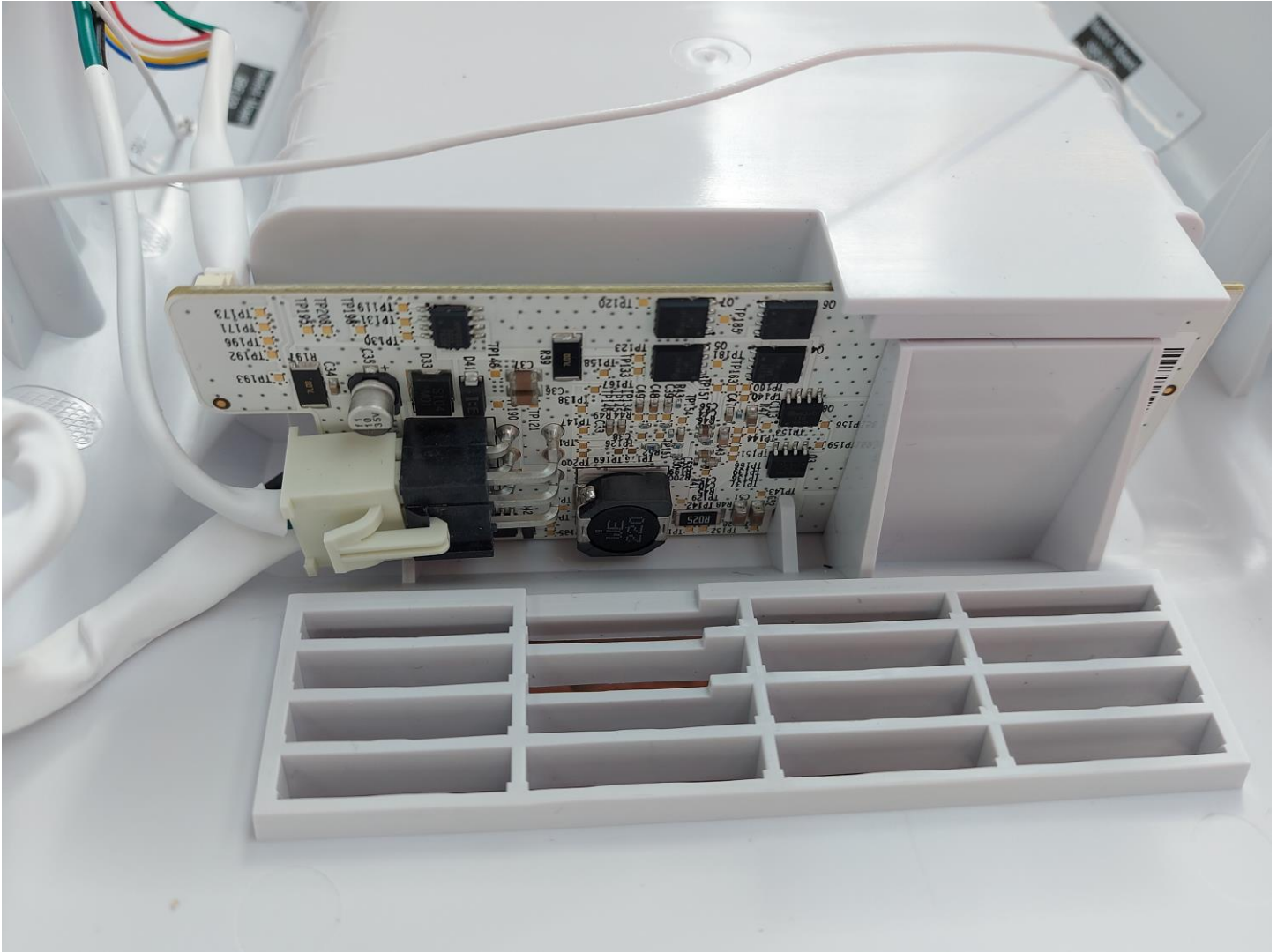
- 1 = GPS Antenna
- 2 = BLE module and trace antenna
- 3 = GPS Module and UF-L connection points
- 4 = Cellular Main (tx&rx) antenna
- 5 = Cellular Diversity (rx only) antenna
- 6 = Cellular module and UF-L connection points



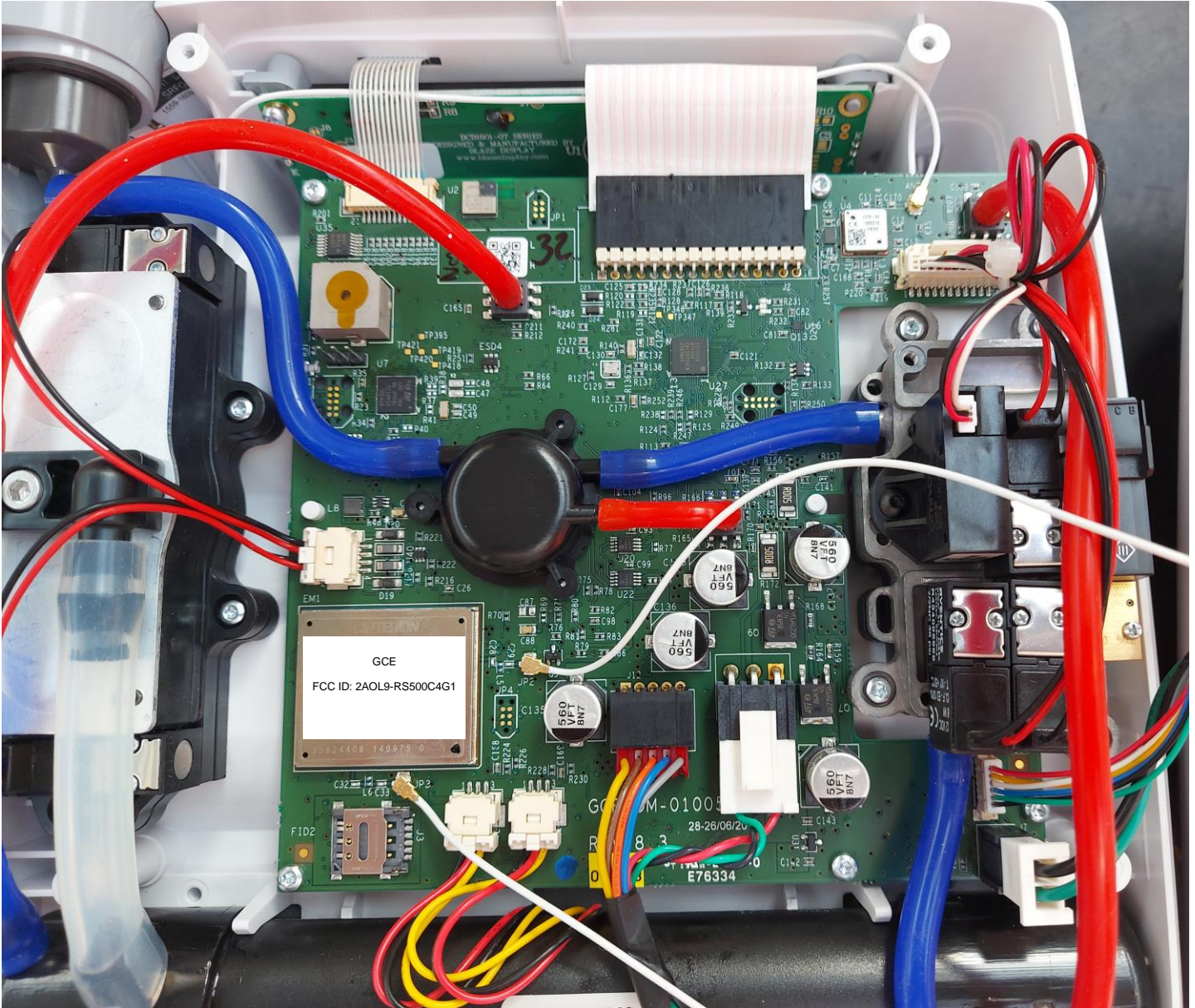
Main (Tx & Rx) Cellular Antenna



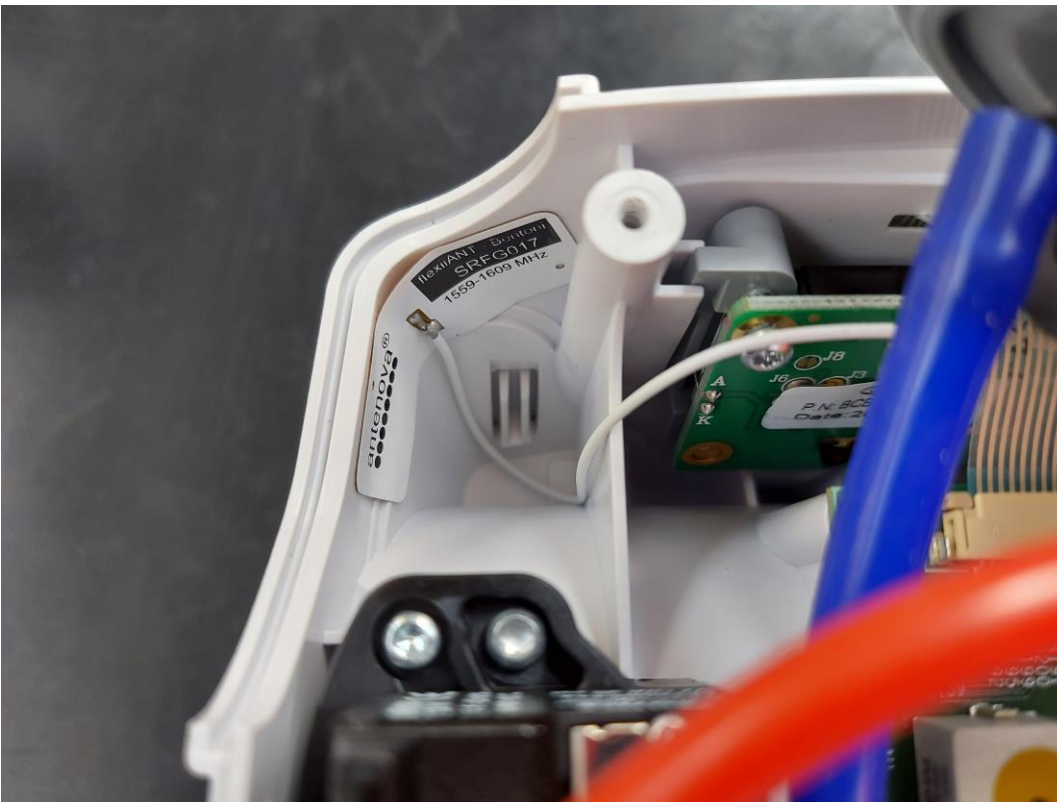
Diversity (Rx Only) Antenna



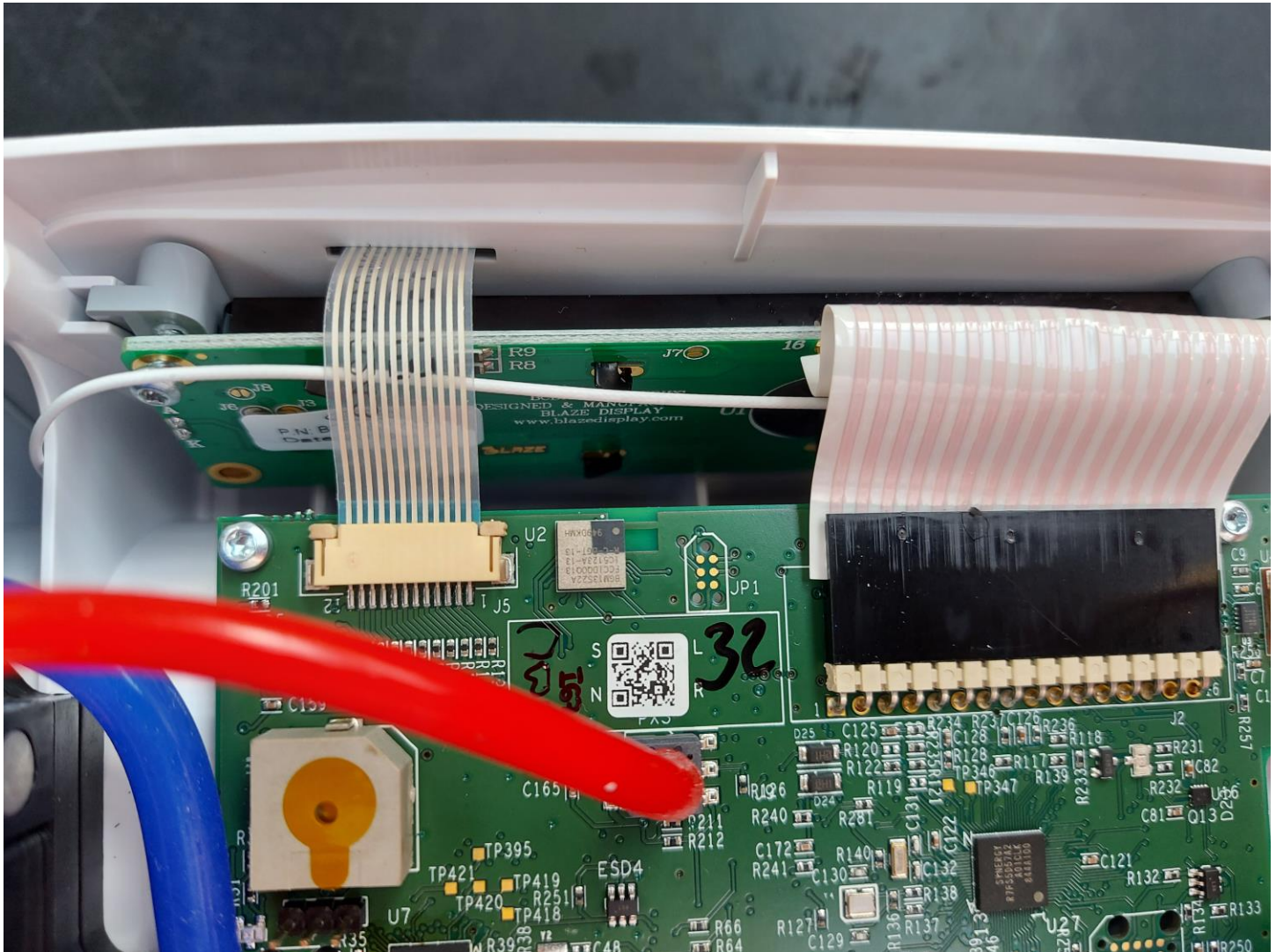
Battery PCBA location in rear cover



Main PCBA fitted to midframe, note red and blue hoses are pneumatic.



GPS Antenna location behind cannula



BLE module close up showing module and copper trace antenna

Main PCBA

