

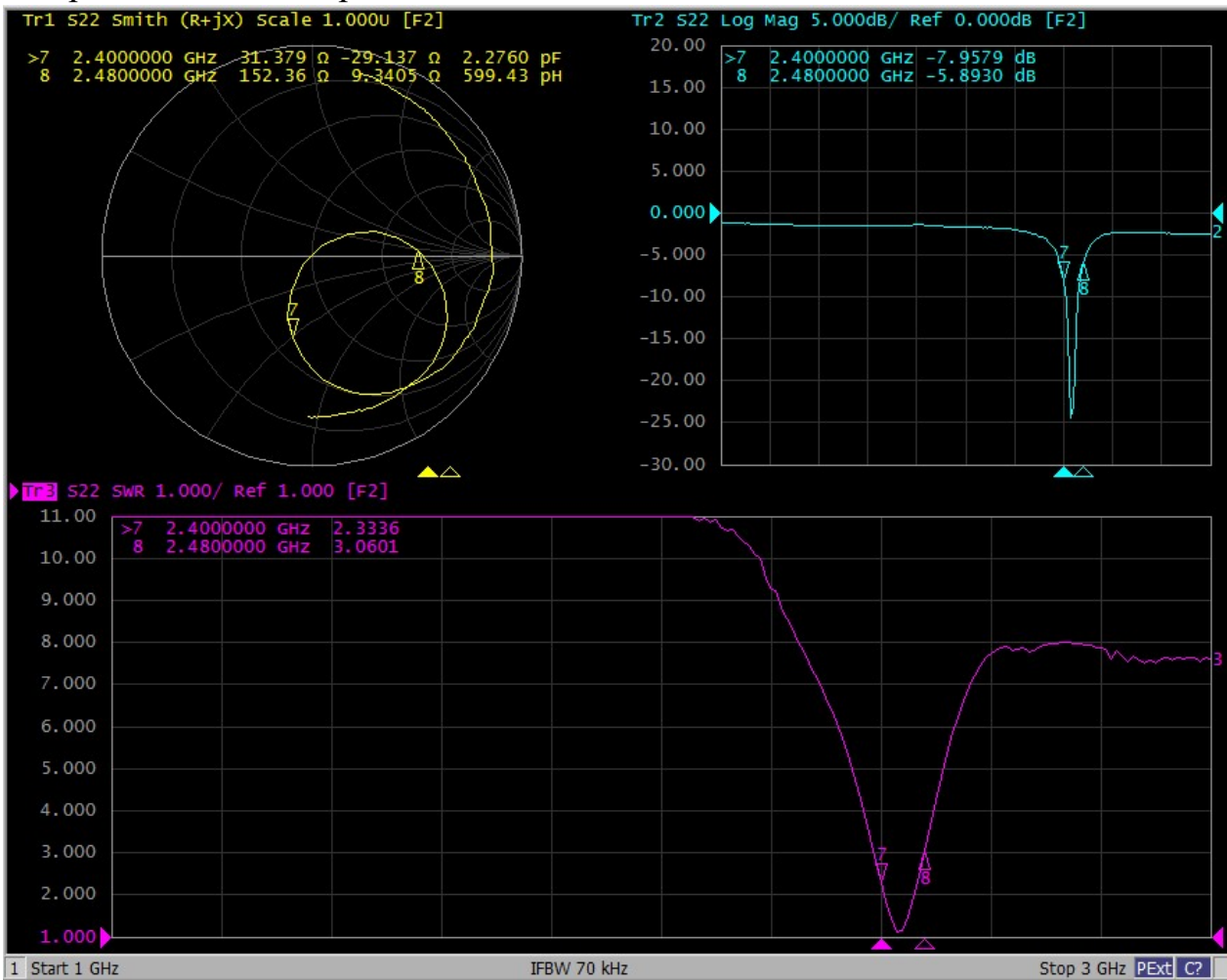


I: The report of passive data



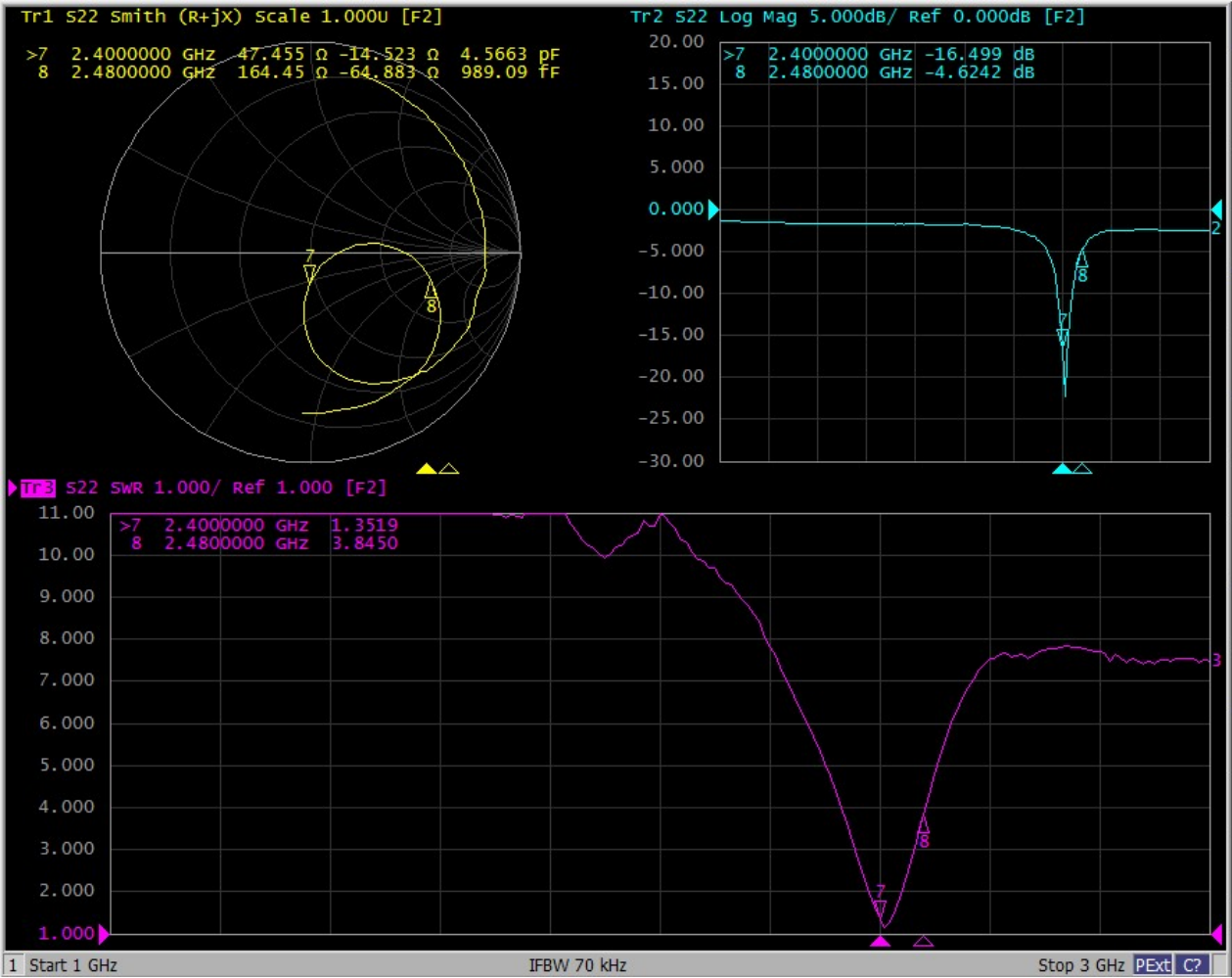
Angilent E5071C

S11 parameter (Free space) :





S11 parameter (Headform) :





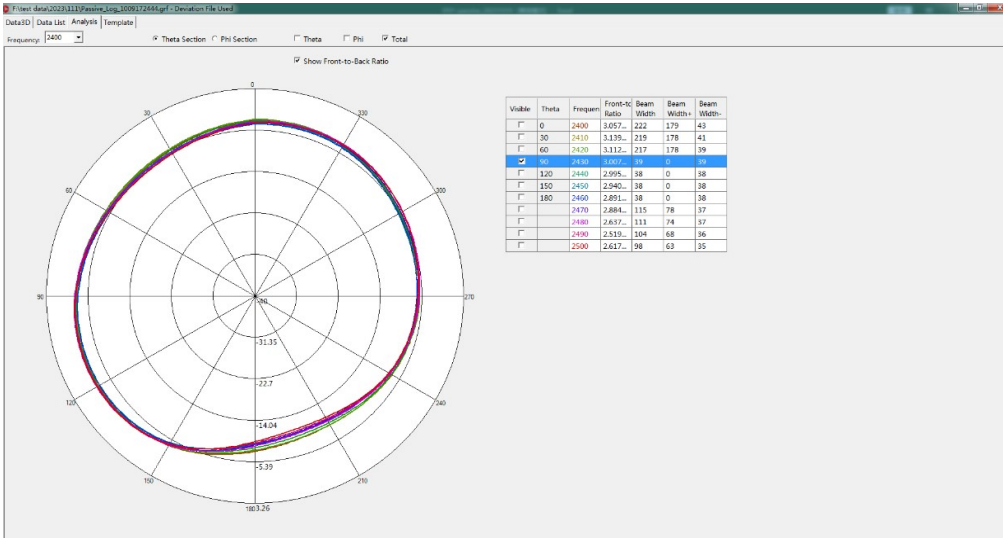
Efficiency:

Free space			
Frequency (MHz)	Gain (dBi)	Efficiency (dB)	Efficiency
2400	-2.26	-5.19	30.27%
2410	-2.20	-5.12	30.78%
2420	-2.15	-5.03	31.39%
2430	-2.26	-5.21	30.10%
2440	-2.23	-5.41	28.79%
2450	-1.98	-5.37	29.07%
2460	-2.28	-5.49	28.25%
2470	-2.09	-5.19	30.27%
2480	-1.72	-5.04	31.34%
2490	-1.88	-5.30	29.52%
2500	-2.03	-5.35	29.18%
Average value	-2.10	-5.24	29.91%

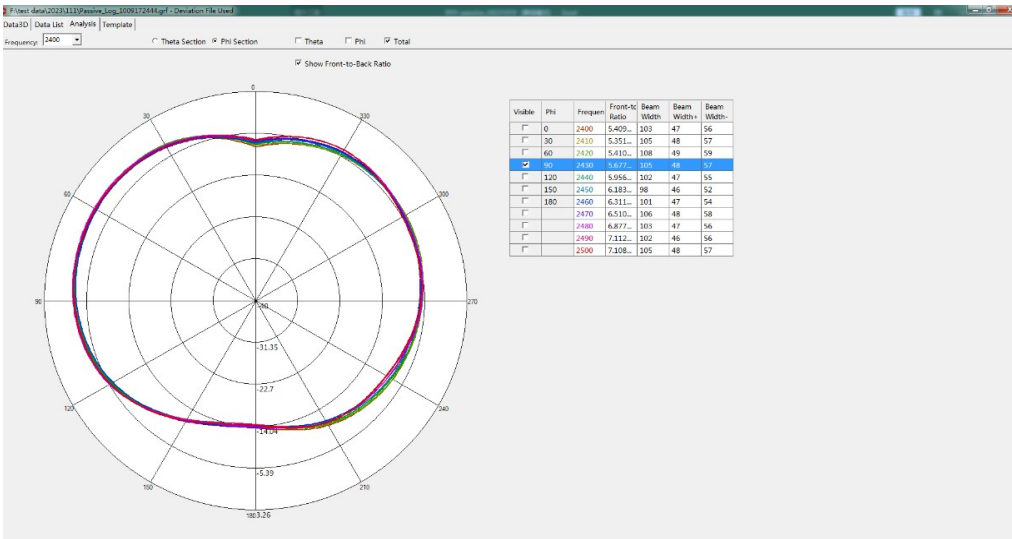
Headform			
Frequency (MHz)	Gain (dBi)	Efficiency (dB)	Efficiency
2400	-5.07	-12.35	5.83%
2410	-4.83	-12.21	6.01%
2420	-4.58	-12.12	6.13%
2430	-4.54	-12.18	6.05%
2440	-4.65	-12.29	5.90%
2450	-4.63	-12.21	6.01%
2460	-4.67	-12.32	5.86%
2470	-4.14	-12.02	6.27%
2480	-3.73	-11.73	6.72%
2490	-3.82	-11.82	6.57%
2500	-3.90	-11.90	6.45%
Average value	-4.42	-12.11	6.16%



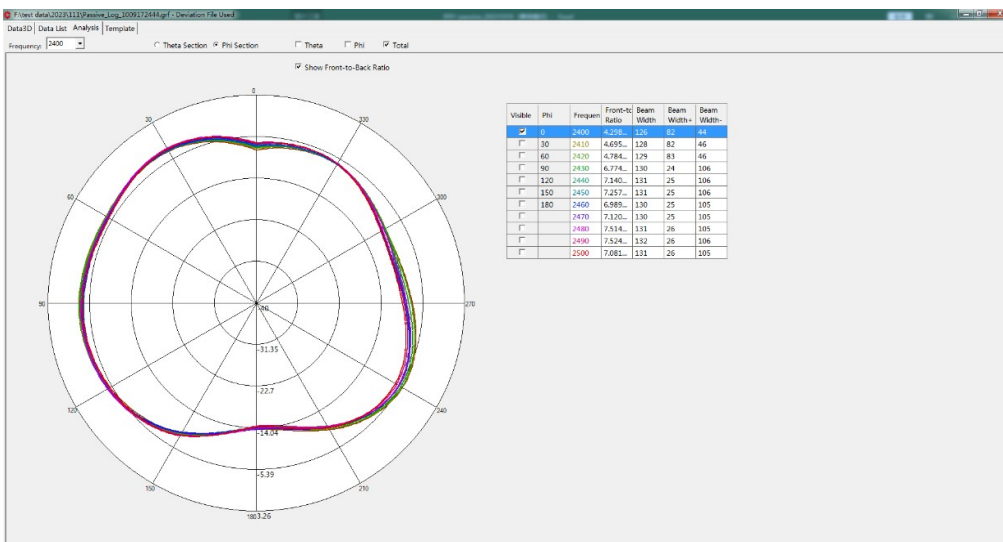
Antenna radiation pattern (Free space) :
Theta=90.00deg



Phi=90.00deg

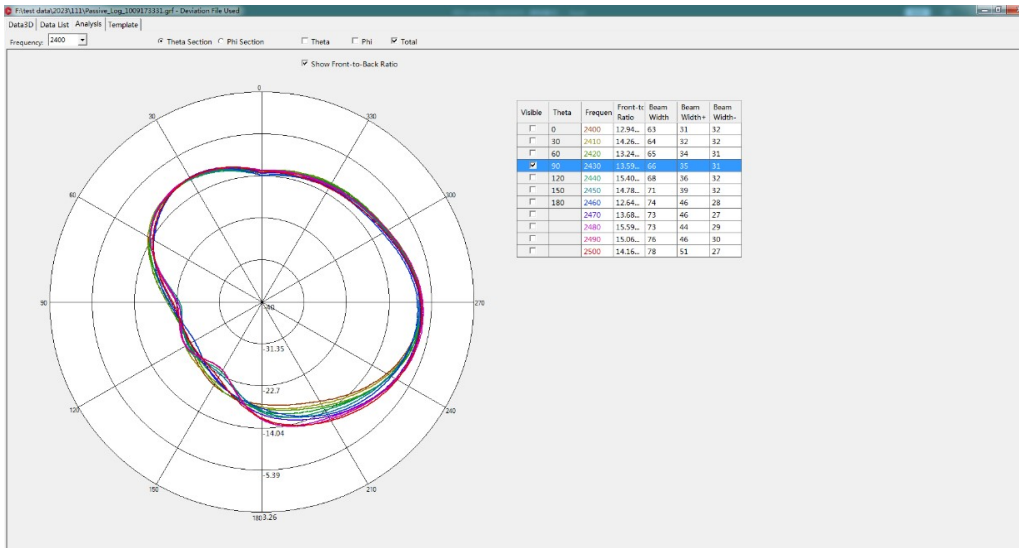


Phi=0.00deg

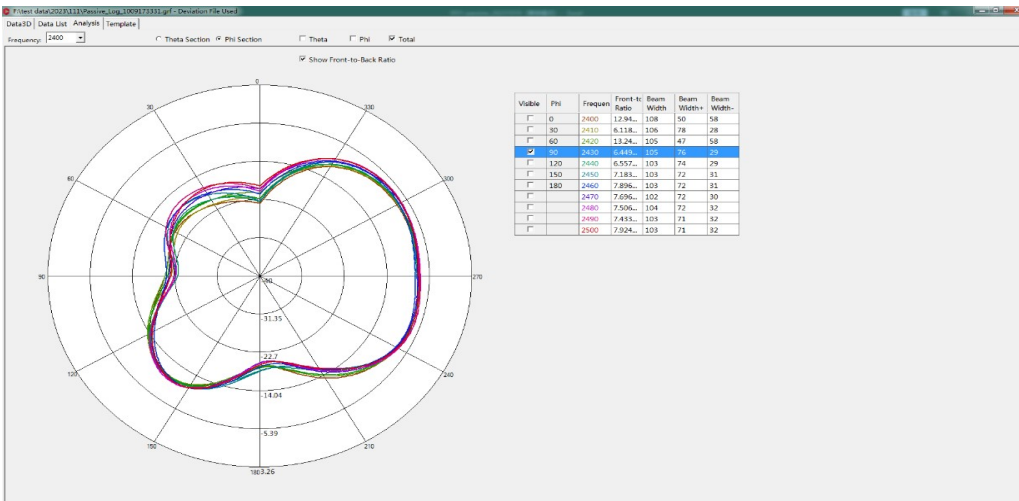




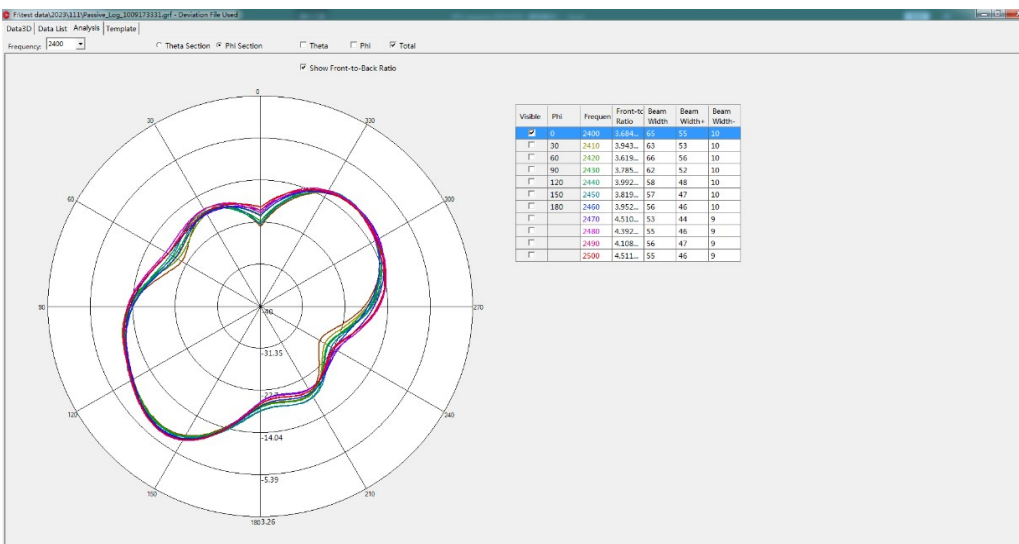
Antenna radiation pattern (Headform) : Theta=90.00deg



Phi=90.00deg

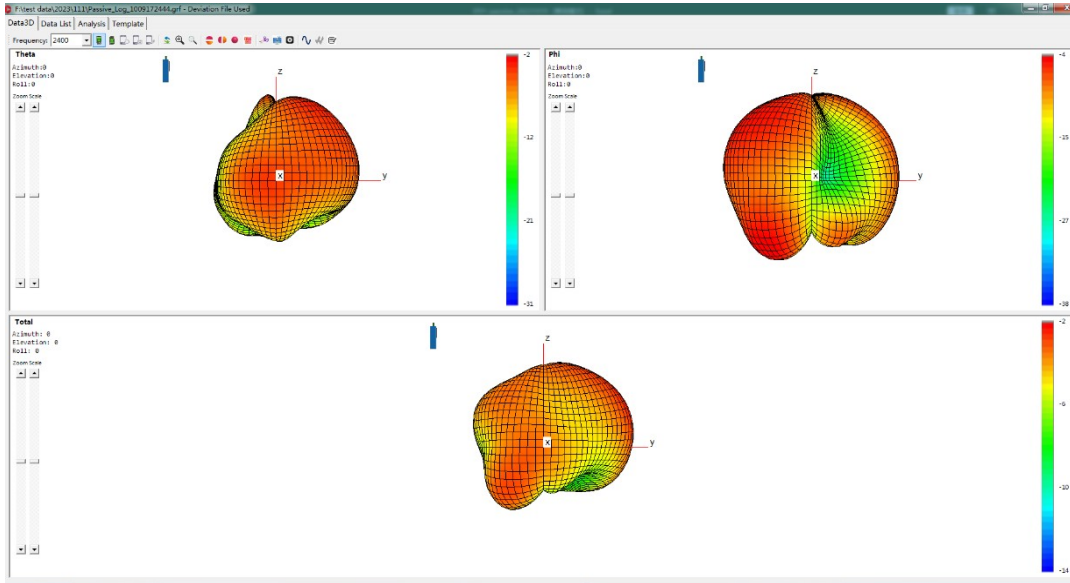


Phi=0.00deg

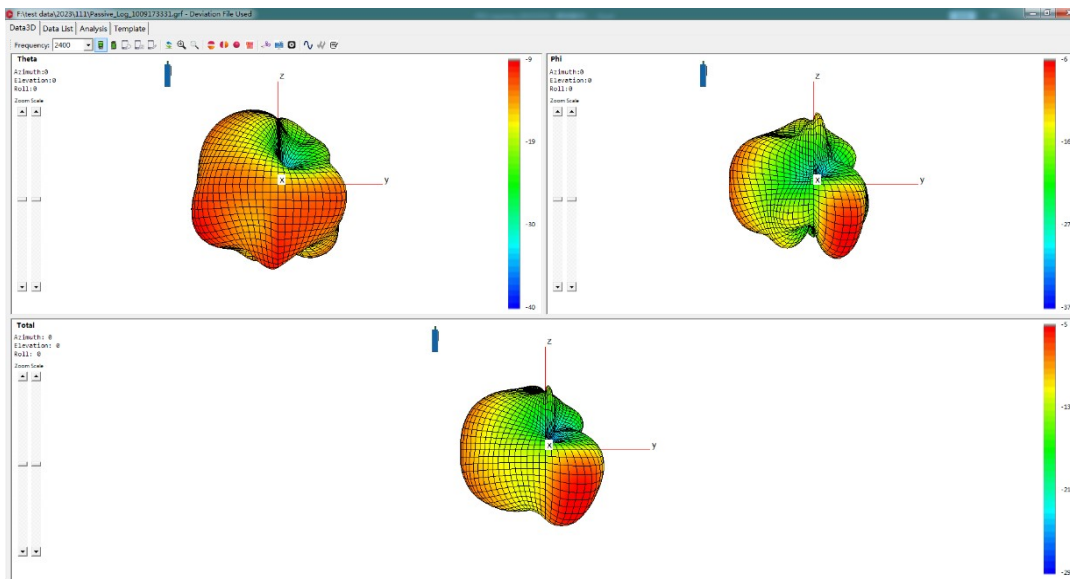




3D Antenna radiation pattern (Free space) :



3D Antenna radiation pattern (Headform) :





II: 3D Active test report of antenna

Free space	Channel	TRP (dBm)	TIS(dBm)
R	CH 0	0.8	-86.8
	CH 39	2.1	-88.8
	CH 78	-1.0	-87.8

Headform	Channel	TRP (dBm)	TIS(dBm)
R	CH 0	-1.1	-85.1
	CH 39	-2.1	-85.6
	CH 78	-3.7	-84.3



OTA Standard Chamber



III: Structure file

