



# Omata One

## PWB Changes

Haltian

# Summary of PWB changes v. MNU03 -> v. MNU0401

## Changes:

- Make room for mechanical protection improvement of the micro switches, outline change (slide 3)
- Increase test pads distance (slide 4)
- Improve micro switches (3) attachment accuracy for SMD (slide 5)
- Shorten battery soldering pads due above change (slide 6)

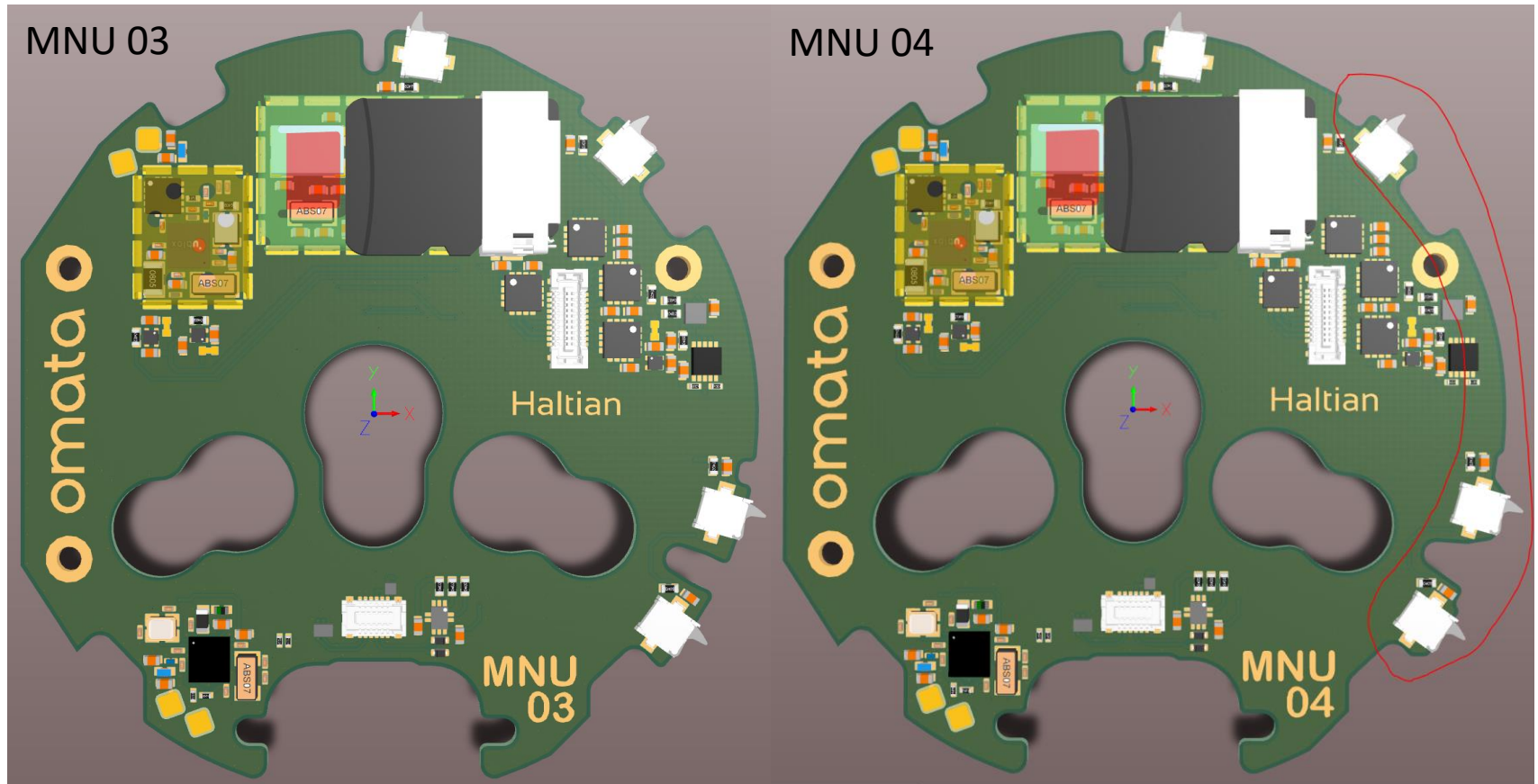
There is no changes in HW schema or components.

These changes have no impact to the certified (CE/FCC/ISED) functionality or safety of the device.

- Markku Hyvälä, Principal Engineer, PWB

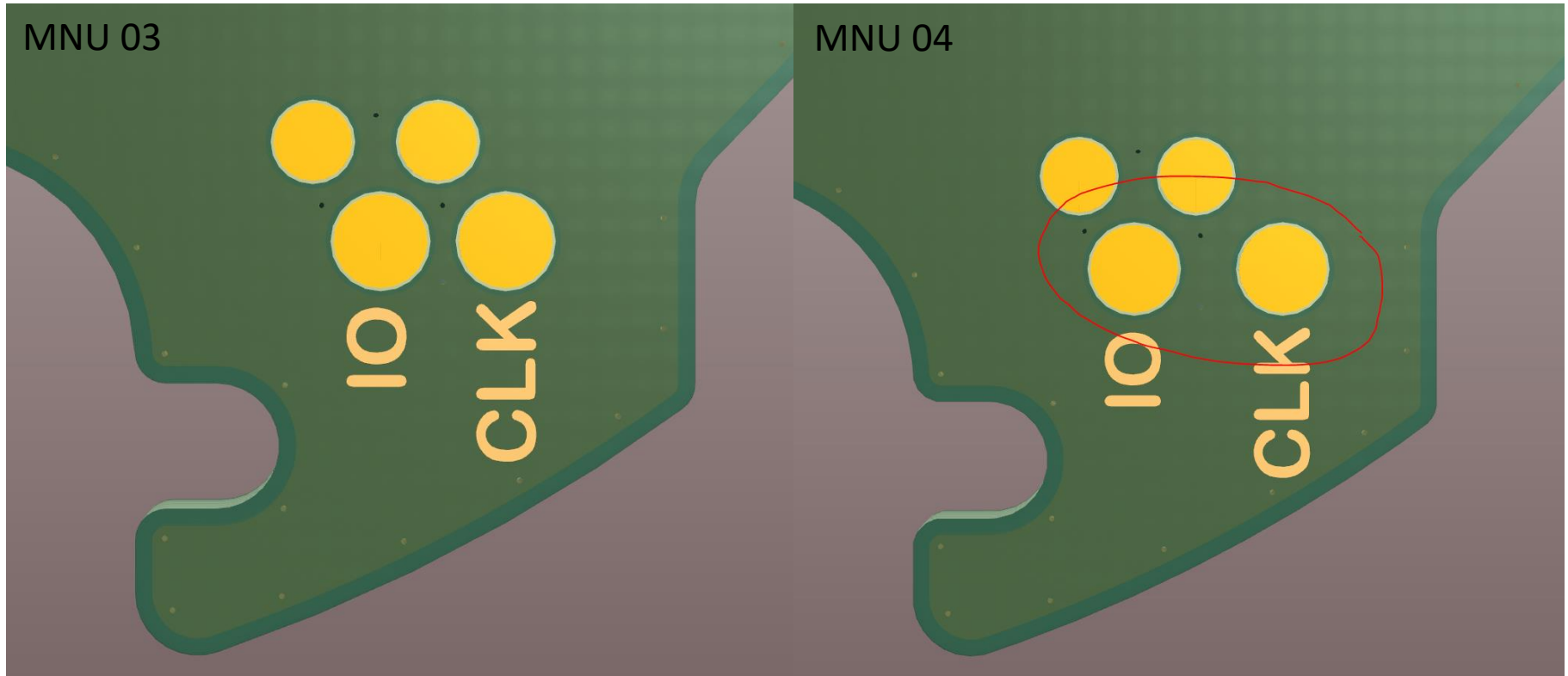
# OUTLINE CHANGE

- Based on reliability tests, additional mechanical support incorporated into mechanics -> a PWB-outline change was needed
- Affects also the panel design



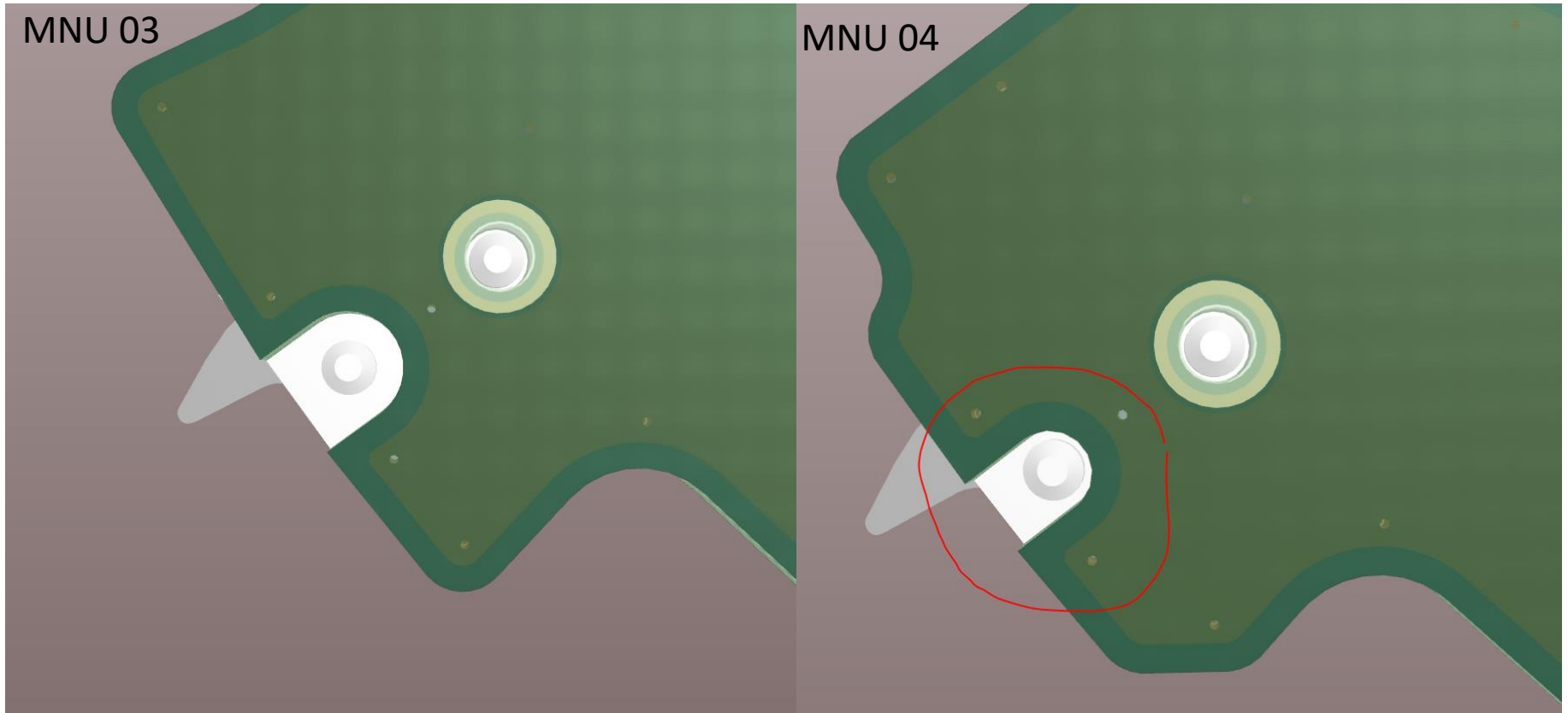
# TESTPAD CHANGE

- Distance between BTLE-testpoints increased to 2.54mm



# SIDE SWITCHES

- Width of the PWB-slots needed for the second guiding pin on side switches tightened for better alignment during SMD.



# BATTERY PADS

- Length of solder pads for battery connection shortened due to outline change (5.0mm -> 4.5mm)

