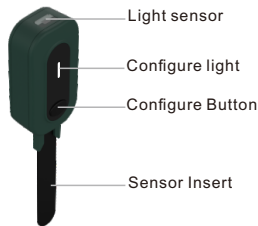


Zigbee soil temperature, humidity and light sensor



SAS981XRTH-GS-Z01(TY)

This sensor is a soil temperature, humidity and light data collector for the smart life APP. It adopts Zigbee technology and has a transmission rate of 250Kbps. After connecting to the APP through the Zigbee gateway, it regularly uploads temperature, humidity and light data to mobile phones or cloud platforms for user reference.

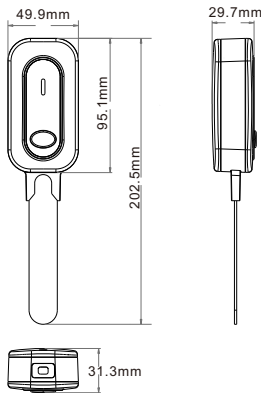


Specification

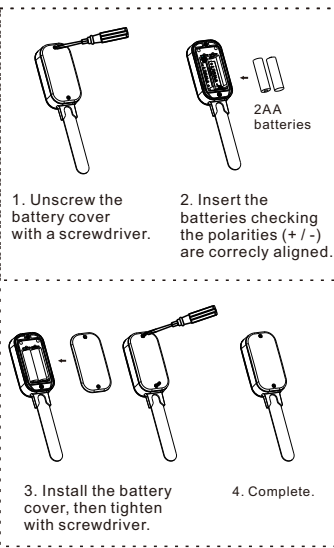
| | |
|-----------------------|--|
| Power supply | 2*AA battery(Don't use rechargeable battery) |
| Battery life | > 1 year |
| Working frequency | 2.4GHZ |
| Transmission distance | 100 meters |
| Size | 49.9*31.3*202.5mm |
| Button function | After long pressing for 5 seconds, the device resets and enters the network distribution mode, and a short press immediately collects data and reports it. |
| LED display | After the device enters the network configuration mode, it will flash continuously for 30 seconds. After the network configuration is successful, it will light up for 1 second and then turn off. It will light up when the data is reported. |

Specification

| | |
|--|--|
| Temperature measurement range | -20~85°C (-4°F~185°F) |
| Temperature measurement accuracy | 0.1°C |
| Humidity measurement range | 0-100%RH |
| Humidity measurement accuracy | 0.1% |
| Light intensity | 1-65535Lux |
| Low temperature alarm(Only APP can display the alarm) | ≤-15°C(5°F) |
| Low power alarm (Only APP can display the alarm) | ≤40% |
| Installation method | The humidity probes are all inserted into the soil |
| IP | IP65 |



Battery installation



Installation

The humidity probes are all inserted into the soil.

Tips: Please dig a hole and bury the PCB part of the device into the soil.

Precautions

1. The battery cannot be replaced when the product is exposed to rain. Prevent the internal moisture from damaging the components after the shell is opened.
2. When using the product, insert the sensor chip into the soil to the end.
3. Don't forget the sealing ring after replacing the battery, otherwise the waterproof effect may be weakened.
4. Do not rub the sensor sheet on the ground to damage the circuit board.
5. The Zigbee soil temperature, humidity and sunlight sensor data refresh time is fixed at 30 seconds, and the configuration button on the device can refresh the sensor data immediately.

FCC Warning

FCC ID:2AOIF-981XRTH
This device complies with part 15 of the FCC Rules. Operation is subject to the following two conditions:
(1) This device may not cause harmful interference, and (2) this device must accept any interference received, including interference that may cause undesired operation.
Note: This equipment has been tested and found to comply with the limits for a Class B digital device, pursuant to part 15 of the FCC Rules.

These limits are designed to provide reasonable protection against harmful interference in a residential installation. This equipment generates, uses and can radiate radio frequency energy and, if not installed and used in accordance with the instructions, may cause harmful interference to radio communications. However, there is no guarantee that interference will not occur in a particular installation. If this equipment does cause harmful interference to radio or television reception, which can be determined by turning the equipment off and on, the user is encouraged to try to correct the interference by one or more of the following.

measures:
—Reorient or relocate the receiving antenna.
—Increase the separation between the equipment and receiver.
—Connect the equipment into an outlet on a circuit different from that to which the receiver is connected.
—Consult the dealer or an experienced radio/TV technician for help.

Note:
The Grantee is not responsible for any changes or modifications not expressly approved by the party responsible for compliance. such modifications could void the user's authority to operate the equipment.
The device has been evaluated to meet general RF exposure requirement. To maintain compliance with FCC's RF exposure guidelines, the distance must be at least 20 cm between the radiator and your body, and fully supported by the operating and installation.

Link APP

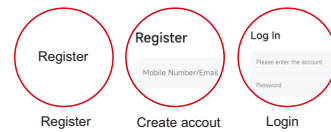
Download:

Click App store or Android application market to download "Tuya Smart" app.



Registration and Login:

Click the "Register" to create account. Enter your account password to log in



Add gateway

- 1 Enter the "HOME" interface of the app. Click the "+" in the upper right corner.
- 2 Click the list bar "Gateway Control", select the Gateway (Zigbee) in the right device list.



Tips: if your gateway is wired, please click "Gateway(ZigBee)"

- 3 Enter your wifi account and password. Click "Confirm"



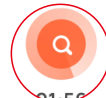
- 4 Click "Confirm the indicator is blinking"



- 5 Click "Blink Quickly"



- 6 Connecting device....



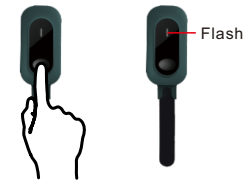
- 7 Click "Done", it means the gateway added successfully.



* Tips

Before binding the gateway, you need to power on the gateway.
When binding a gateway, the mobile phone and the gateway must connect to the same network.

Add a device through gateway



- 1 Press and hold the configuration button for 5 seconds. Wait for the red light to flash.

- 2 Click "Add subdevice" to enter the device list.



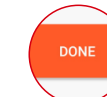
- 3 Search device



- 4 Select the type of device you want to add.

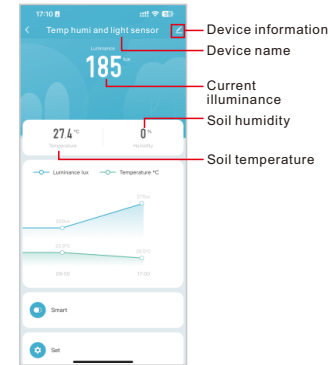


- 5 Click "Done", it means the device added successfully.

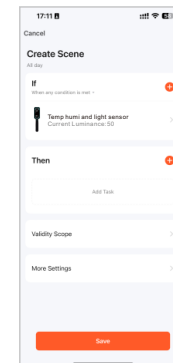


* Tips

- Gateway must be added before adding Zigbee soil sensor.



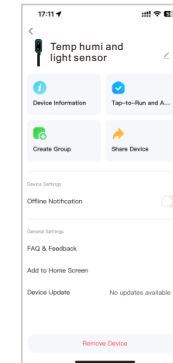
Zigbee soil temperature, humidity and light sensor **operation interface**



Zigbee soil temperature, humidity and light sensor **Smart interface**



Zigbee soil temperature, humidity and light sensor **Setting interface**



Zigbee soil temperature, humidity and light sensor **Device information**