

SAFETY PRECAUTIONS

Please read the instructions in this manual carefully before use, and check whether the voltage used is the same as the voltage on the nameplate of the machine

- 1.Please avoid using the same socket with other electrical products
- 2.Be sure to keep the power cord plug and the model body dry
- 3.Do not pour or insert abnormal objects such as liquids and metals into the fan

- 4.Pay special attention to children, do not insert fingers or sticks into the front net to play
- 5.In the following cases, please stop using it immediately and contact the official after-sales service for processing:

- a. Crash or drop damage b. Accidentally dropped into water
- c. Power cord damaged, aged or knotted d. The plug is loose
- e. The fan blade is broken f. There is hot, smoke and odor, etc.

6.Please refer to this manual for cleaning, maintenance and disassembly. If you have any questions, please contact the official after-sales service.

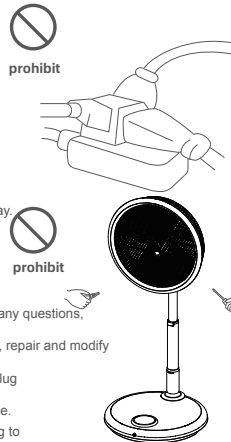
Non-manufacturers or their authorized professionals are not allowed to disassemble, repair and modify the machine by themselves.

7.Before moving, disassembling or maintaining the fan, please turn off the fan and unplug it from the power supply.

Please press and hold the power plug to pull out, do not pull the power cord with force.

8.When not in use for a long time or going out, please be sure to unplug the power plug to avoid standby power consumption.

**Warning: If the power cord is damaged, it must be replaced by a similarly qualified person from the manufacturer or its service office to avoid danger.**



BASIC PARAMETERS

PRODUCT NAME: FOLDABLE FAN

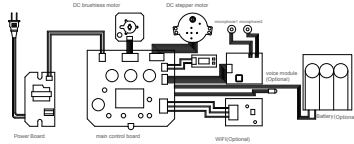
RATED VOLTAGE: 100-240~ 50/60Hz

RATED FREQUENCY: 50/60Hz

RATED POWER: 22W

PRODUCT SIZE: Φ380\*250MM(FOLD)

PRODUCT SIZE: Φ380\*725-910MM(UPRIGHT)



REFERENCE STANDARD:

GB 4706.1-2005 "Safety of Household and Similar Electrical Appliances Part 1: General Requirements"

GB 4706.27-2008 "Safety of Household and Similar Electrical Appliances Part 2: Special Requirements for Fans"

GB 4343.1-2018 "Electromagnetic Compatibility Requirements for Household Appliances, Power Tools and Similar Appliances Part 1: Emission"

GB 17625.1-2012 "Electromagnetic Compatibility Limits Harmonic Current Emission Limits (Each Phase Input Current s16A)"

COMPOSITION OF HAZARDOUS SUBSTANCES

Part Name	Hazardous Substances					
	(Pb)	(Hg)	(Cd)	(Cr(VI))	(PBB)	(PBDE)
control panel	×	○	○	○	○	○
motor	×	○	○	○	○	○
Power Board	×	○	○	○	○	○
plastic parts	○	○	○	○	○	○
power cable	○	○	○	○	○	○
packaging print	○	○	○	○	○	○
Hardware	×	○	○	○	○	○
<p>This form is prepared in accordance with SJ/T11364</p> <p>O: Indicates that the content of the hazardous substance in all homogeneous materials of the component is below the limit specified in GB/T26572.</p> <p>X: Indicates that the content of the hazardous substance in at least one homogeneous material of the component exceeds the limit specified in GB/T26572 However, with the existing technical conditions, it is extremely difficult to make the product parts completely free of the above harmful substances. The design will be gradually improved with the progress of technology.</p> <p>The " environmental protection service life " of this product is 10 years, and its logo is shown in the left figure. It can only be used under the normal conditions described in this manual.</p>						



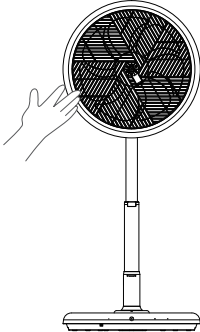
! WARN

It is strictly forbidden to forcibly break it with your hands

The up and down shaking of the fan and the left and right shaking of the fan are driven by motors. It is strictly forbidden to force it to be straightened by hand. Forcibly straightening may damage the internal structure! If you need to rotate the angle, please direct voice control or use the °.



prohibit



EASY TROUBLESHOOTING

1. If you find that it cannot be used, please pay attention to the following situations:

- 1. Maybe the plug is not plugged in;
- 2. The switch may not be turned on yet;
- 3. If none of the above is the case, please contact the official customer service.

2. If there is abnormal noise after operation, please pay attention to the following conditions:

- 1. Whether the fan blade is really placed in the axis of the motor;
- 2. Whether the fan blade is deformed and touches the front grille;
- 3. Whether the front grille is assembled correctly.

3. Emergency treatment methods

If there is any abnormal phenomenon such as smoking during use, please pull out the plug quickly and contact the official customer service for assistance.

AFTER-SALES SERVICE

Beontech strictly abides by the "Consumer Rights Protection Law of the People's Republic of China" and the "Product Quality Law of the People's Republic of China"

Three guarantees are implemented in accordance with the law, and the contents are as follows:

1. Warranty Policy

1. Within 7 days from the day after the receipt, if the machine has a performance failure, it can be returned/exchanged free of charge;

2 Within 30 days from the day after the receipt, if the machine has a performance failure, it can be replaced/repared free of charge;

3 Within 1 year from the day after the receipt, if the machine has a performance failure, it can be repaired free of charge;

4 For returns, exchanges and repairs that are not caused by performance failures, the user shall pay the freight;

5. Accessories and consumable parts do not enjoy this after-sales policy.

2. Disclaimer

In the following cases, even within the validity period of the Three Guarantees, you cannot enjoy free return/exchange and repair services:

- 1. Failures and damages caused by natural disasters, abnormal voltages, public hazards, and chemical erosion;
- 2. Failure and damage caused by human factors;
- 3. Failure and damage caused by maintenance, disassembly or modification at unofficial designated service points;
- 4. Other failures and damages caused by the use, maintenance or storage not in accordance with the requirements of the instruction manual;
- 5. Failure and damage caused by other non-product quality problems.
- 6. This appliance is not intended to be used by users (including children) with insufficient physiology, perception, mental ability, experience or knowledge.

"Unless it is used safely under the supervision or direction of a person responsible for its safety. (Children should be supervised to ensure children play with appliances).

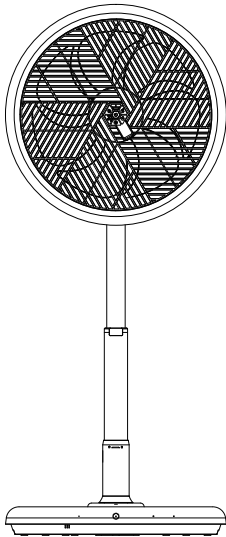


Customer Service: support@AirdogUSA.com

Official Website: <https://airdogusa.com/>



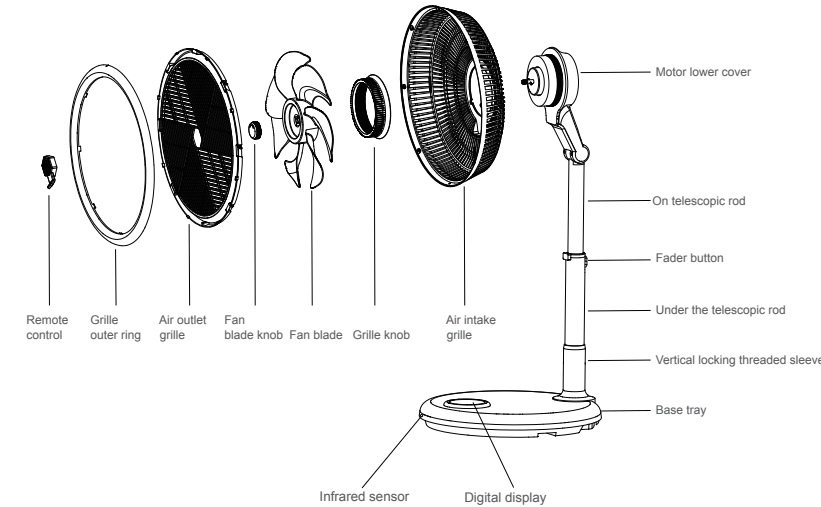
FOLDABLE FAN F12



PACKING LIST

Host	×1	Power Cable	×1
Certificate	×1	Remote Control	×1
Manual (including voice-activated command vocabulary)			×1

PART NAME



VOICE CONTROL INSTRUCTIONS (OPTIONAL)

- The standard language for controlling the fan is "wake-up word + command word". If you want to turn on the fan, first say the wake-up word "Xiao Bei Xiao Bei", After hearing the "di" sound, say the command word "turn on the fan, the fan will automatically turn on after the "di" sound.
- The 2 microphones that receive voice are on the control panel at the bottom of the fan. Use them as far as possible.
- At present, it mainly supports Mandarin, please try to use Mandarin to control the fan. .
- Due to the different use environment, when the fan has no feedback, you can slow down the speed of speech, articulate clearly or try a more accurate angle,More volume and closer distance.
- The instruction words of the fan and the corresponding feedback are as follows:

control intent	Chinese command word/wake word	Fan feedback
wake up the fan	Hello,Airdog	beep
switch machine	Turn on the fan, turn it on, turn on the electric fan	Turn on after a beep
	Turn off the fan, shut down, turn off the electric fan	Shut down after a beep
Adjust the wind speed	first wind, lowest gear, down to - gear, down to lowest gear	After a beep, go directly to the 1st gear
	2nd windshield, adjust to 2nd gear (3rd to 11th gears can be operated as above)	After a beep, go directly to the 2nd gear
	The highest gear (twelfth gear), adjust to the highest gear	After a beep, go directly to the 12th gear
	Turn down the wind speedr	After a beep, -1 gear, the lowest gear is 1 gear
	Increase the wind speed, the wind is stronger	After a beep, +1 gear, the highest gear is 12
control shaking	Shake left and righttronger	Started shaking his head after a beep
	Shake the head slightly	After a beep, turn on 60° and shake your head
	Shake your head normally	Turn on the 90° shaking head after a beep
	shake head sharply	Turn on the 120° shaking head after a beep
	shake your head quickly	After a beep, turn on and quickly shake your head
	shake your head slowly	After a beep-beep, turn on the slow shake
	Turn off shaking head	Turn off after a beep and shake your head left and right
Timer switch	Shut down after two, four, six or eight hours	After a beep, set it to shut down after two, four, six or eight hours
	Turn on after two, four, six, eight hours	Beep - set to turn on after two, four, six or eight hours
	cancel timer	Cancel the timer after a beep
Switch mode	normal mode, normal wind	After a beep sound, it directly turns into a general wind
	natural pattern, natural wind	After a beep, it turns into natural wind directly after making a sound
	Smart mode, turn on smart mode	After a beep, it will directly change to smart mode
	Turn off smart mode	Turn off smart mode after a beep
	sleep mode, turn on sleep mode	After a beep, it goes directly to sleep mode
	Turn off sleep mode	Turn off sleep mode after a beep
	Open the child lock, enable the child lock	Open the child lock after a beep
switch screen light	Turn off display, turn off screen light	Turn off the screen light after the beep
	Turn on display, turn on screen light	Turn on the screen light after a beep

CONTROL PANEL KEY DESCRIPTION

**Timed on/off**  
Timed power on when in standby  
Shutdown while running  
Short press 1 time, the timing will be extended by 1 hour,  
Can be extended up to 12 hours;  
Press again after 12 hours to cancel the timing

**shaking his head**  
6 cycle states,  
The order is: 60° shaking his head,  
90° shaking his head,  
120° shaking head, 60° slow shaking,  
90° slow shaking head,  
120° slow shaking head

**Switch mode (short press)**  
Short press to switch modes. 4 state loops  
Switch, followed by - sleep mode - normal wind  
- Natural Wind - Smart Mode.  
Natural wind: Simulate natural wind, sometimes fast and slow.  
Smart Mode: The wind speed changes with the room temperature.  
Sleep mode: the wind speed is reduced by 1 gear per hour,  
After downshifting to 1st gear, keep running at 1st gear at low speed.

**Turn up the wind speed**  
Up to 12th gear, after reaching 12th gear,  
it will not rise again

**Turn down the wind speed**  
The lowest gear is 1st gear, and it will not drop  
again after reaching the 1st gear

**switch**  
The switch defaults to 3 gears

CONTROL PANEL SYMBOL DESCRIPTIONS

Child lock Normal wind Natural wind Smart mode Sleep mode

°C Celsius h Hour 60° Shaking around 60° 90° Shaking around 90° 120° Shaking around 120°

WiFi CO2 Carbon dioxide 60°L Slowly shake around 60° 90°L Slowly shake around 90° 120°L Slowly shake around 120°

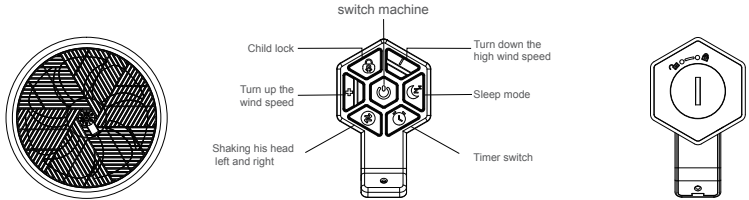
\* WiFi (Optional) Connection method: Press and hold for 10 seconds in the off state, let go after hearing a long beep  
CO2 (Optional)

CONTROL PANEL DIGITAL DESCRIPTION

- °C light up,Indicates temperature;
- h light up,Indicates hours;
- °C and h not bright,Indicates windshield

HOW TO USE THE REMOTE CONTROL

- The recommended storage position of the remote control is in the center of the air outlet grille.  
It contains a magnet, which can be directly adsorbed.
- The signal receiving port of the remote control is in the center of the chassis, the longest receiving distance is 4.5 meters, and the best receiving angle is 30 to 45 degrees, please use it accurately.
- If the fan cannot be controlled in the correct way, please replace the battery in time.



FCC Statement

This equipment has been tested and found to comply with the limits for a Class B digital device, pursuant to part 15 of the FCC Rules. These limits are designed to provide reasonable protection against harmful interference in a residential installation. This equipment generates, uses and can radiate radio frequency energy and, if not installed and used in accordance with the instructions, may cause harmful interference to radio communications. However, there is no guarantee that interference will not occur in a particular installation. If this equipment does cause harmful interference to radio or television reception, which can be determined by turning the equipment off and on, the user is encouraged to try to correct the interference by one or more of the following measures:  
—Reorient or relocate the receiving antenna.  
—Increase the separation between the equipment and receiver.  
—Connect the equipment into an outlet on a circuit different from that to which the receiver is connected.  
—Consult the dealer or an experienced radio/TV technician for help.

FCC Radiation Exposure Statement

This device complies with FCC radiation exposure limits set forth for an uncontrolled environment and it also complies with Part 15 of the FCC RF Rules. This equipment should be installed and operated with minimum distance 20cm between the radiator & your body and must not be co-located or operating in conjunction with any other antenna or transmitter.

This device complies with Part 15 of the FCC Rules. Operation is subject to the following two conditions:  
(1) this device may not cause harmful interference, and  
(2) this device must accept any interference received, including interference that may cause undesired operation.

Caution!  
Any changes or modifications not expressly approved by the party responsible for compliance could void the user's authority to operate the equipment.

CLEANING AND MAINTENANCE

- The oil or dust of the fan should be removed in time.
  - Before cleaning and maintenance, please turn off the power and pull out the plug.  
Do not touch the plug with wet hands, wait for the fan to cool before cleaning.
  - Wipe with a soft cloth dampened with water first, and then dry with a soft dry cloth.  
If there is dirt that is not easy to fall off, It is recommended to use neutral detergents specially formulated for tableware.
  - Do not use chemical solvents such as gasoline, toluene, bleach or strong lye to wipe,  
Also do not use a brush with a hard texture to avoid scratching and corroding the appearance of the machine.
  - Do not wash the host directly with water to prevent electrical short circuit or poor electrical conductivity.
  - The fan blade of the fan is an important part, no matter when it is installed, disassembled, scrubbed or used,  
it must be protected to prevent deformation. .
- \*The rotating shaft used by the motor of this product does not need extra. Oil maintenance,  
please do not spray maintenance oil by yourself (such as: rust removal oil, antirust oil, sewing oil, etc.)



REMOTE CONTROL BATTERY PRECAUTIONS

- When replacing the battery, be sure to use a brand new battery.
- Please install the battery according to the + and - pole instructions. Wrong installation will cause leakage and corrosion of the battery, and cause damage to the remote control.
- Do not try to change, short-circuit, or disassemble the battery to avoid danger.
- When not in use for a long time, please remove the battery. Avoid causing battery leakage.

Please Recycle and Used Batteries

※ When the battery is discarded, please put it in the recycling station designated by the government to avoid polluting the environment.