

TEST REPORT

FCC ID: 2AOE9-RM-8801

Product: 2.4G WIRELESS MOUSE

Model No.: RM-8801

Additional Model:

**RM-8802, RM-8803, RM-8805, RM-8806, RM-8808, RM-8809, RM-8810,
RM-8812, RM-8816, RM-8818, RM-8820, RM-8826, RM-8828**

Trade Mark: N/M

Report No.: TCT171219E004

Issued Date: October 26, 2017

Issued for:

**DONGGUAN HONGJIANXIN ELECTRONIC & TECHNOLOGY CO. LTD
490#, JIENAN RD, XIAOJIEJIAO, HUMEN TOWN, DONGGUAN,
GUANGDONG, CHINA**

Issued By:

**Shenzhen Tongce Testing Lab.
1B/F., Building 1, Yibaolai Industrial Park, Qiaotou, Fuyong, Baoan District,
Shenzhen, Guangdong, China**

TEL: +86-755-27673339

FAX: +86-755-27673332

Note: This report shall not be reproduced except in full, without the written approval of Shenzhen Tongce Testing Lab.

This document may be altered or revised by Shenzhen Tongce Testing Lab. personnel only, and shall be noted in the revision section of the document. The test results in the report only apply to the tested sample.

TABLE OF CONTENTS

1. Test Certification	3
2. Test Result Summary	4
3. EUT Description.....	5
4. Genera Information.....	7
4.1. Test Environment and Mode	7
4.2. Description of Support Units	7
5. Facilities and Accreditations	8
5.1. Facilities	8
5.2. Location.....	8
5.3. Measurement Uncertainty	8
6. Test Results and Measurement Data	9
6.1. Antenna Requirement	9
6.2. Conducted Emission.....	10
6.3. Radiated Emission Measurement.....	11
6.4. 20dB Occupied Bandwidth.....	20
Appendix A: Photographs of Test Setup	
Appendix B: Photographs of EUT	

1. Test Certification

Product:	2.4G WIRELESS MOUSE
Model No.:	RM-8801
Additional Model:	RM-8802, RM-8803, RM-8805, RM-8806, RM-8808, RM-8809, RM-8810, RM-8812, RM-8816, RM-8818, RM-8820, RM-8826, RM-8828
Trade Mark:	N/M
Applicant:	DONGGUAN HONGJIANXIN ELECTRONIC & TECHNOLOGY CO. LTD
Address:	490#, JIENAN RD, XIAOJIEJIAO, HUMEN TOWN, DONGGUAN, GUANGDONG, CHINA
Manufacturer:	DONGGUAN HONGJIANXIN ELECTRONIC & TECHNOLOGY CO. LTD
Address:	490#, JIENAN RD, XIAOJIEJIAO, HUMEN TOWN, DONGGUAN, GUANGDONG, CHINA
Date of Test:	October 26, 2017 – November 23, 2017
Applicable Standards:	FCC CFR Title 47 Part 15 Subpart C Section 15.249

The above equipment has been tested by Shenzhen Tongce Testing Lab. and found compliance with the requirements set forth in the technical standards mentioned above. The results of testing in this report apply only to the product/system, which was tested. Other similar equipment will not necessarily produce the same results due to production tolerance and measurement uncertainties.

Tested By:



Garen

Date:

Nov. 23, 2017

Reviewed By:



Tomsin

Date:

Nov. 25, 2017

Approved By:

Date:

Nov. 25, 2017

2. Test Result Summary

Requirement	CFR 47 Section	Result
Antenna Requirement	§15.203	PASS
AC Power Line Conducted Emission	§15.207	N/A
Field Strength of Fundamental	§15.249 (a)	PASS
Spurious Emissions	§2.1053 §15.249 (a) (d)/ §15.209	PASS
Band Edge	§2.1053 §15.249 (d)/ §15.205	PASS
20dB Occupied Bandwidth	§2.1049 §15.215 (c)	PASS

Note:

1. Pass: Test item meets the requirement.
2. Fail: Test item does not meet the requirement.
3. N/A: Test case does not apply to the test object.
4. The test result judgment is decided by the limit of test standard.

3. EUT Description

Product:	2.4G WIRELESS MOUSE
Model No.:	RM-8801
Additional Model:	RM-8802, RM-8803, RM-8805, RM-8806, RM-8808, RM-8809, RM-8810, RM-8812, RM-8816, RM-8818, RM-8820, RM-8826, RM-8828
Trade Mark:	N/M
Hardware Version:	N/A
Software Version:	N/A
Operation Frequency:	2408MHz - 2474MHz
Number of Channel:	34
Modulation Technology:	FSK , Mouse deviation=500Khz
Antenna Type:	Integral PCB Antenna
Antenna Gain:	-0.61dBi
Power Supply:	VDD=1.5V (AA 1.5V Battery)

Operation Frequency Each of Channel

Operation Frequency each of channel							
Channel	Frequency	Channel	Frequency	Channel	Frequency	Channel	Frequency
1	2408MHz	11	2428MHz	21	2448MHz	31	2468MHz
2	2410MHz	12	2430MHz	22	2450MHz	32	2470MHz
3	2412MHz	13	2432MHz	23	2452MHz	33	2472MHz
4	2414MHz	14	2434MHz	24	2454MHz	34	2474MHz
5	2416MHz	15	2436MHz	25	2456MHz		
6	2418MHz	16	2438MHz	26	2458MHz		
7	2420MHz	17	2440MHz	27	2460MHz		
8	2422MHz	18	2442MHz	28	2462MHz		
9	2424MHz	19	2444MHz	29	2464MHz		
10	2426MHz	20	2446MHz	30	2466MHz		

Remark: Channel 1, 17 and 34 are selected to perform the tests.

Note:

In section 15.31(m), regards to the operating frequency range over 10 MHz, the Lowest frequency, the middle frequency, and the highest frequency of channel were selected to perform the test, and the selected channel see below:

Channel	Frequency
The lowest channel	2408MHz
The middle channel	2440MHz
The Highest channel	2474MHz

4. General Information

4.1. Test Environment and Mode

Operating Environment:	
Temperature:	25.0 °C
Humidity:	54 % RH
Atmospheric Pressure:	1010 mbar
Test Mode:	
Engineering mode:	Keep the EUT in continuous transmitting by select channel
<p>The sample was placed (0.8m below 1GHz, 1.5m above 1GHz) above the ground plane of 3m chamber. Measurements in both horizontal and vertical polarities were performed. During the test, each emission was maximized by: having the EUT continuously working, investigated all operating modes, rotated about all 3 axis (X, Y & Z) and considered typical configuration to obtain worst position, manipulating interconnecting cables, rotating the turntable, varying antenna height from 1m to 4m in both horizontal and vertical polarizations. The emissions worst-case are shown in Test Results of the following pages.</p>	

4.2. Description of Support Units

The EUT has been tested as an independent unit together with other necessary accessories or support units. The following support units or accessories were used to form a representative test configuration during the tests.

Equipment	Model No.	Serial No.	FCC ID	Trade Name
/	/	/	/	/

Note:

1. All the equipment/cables were placed in the worst-case configuration to maximize the emission during the test.
2. Grounding was established in accordance with the manufacturer's requirements and conditions for the intended use.

5. Facilities and Accreditations

5.1. Facilities

The test facility is recognized, certified, or accredited by the following organizations:

- FCC - Registration No.: 645098

Shenzhen Tongce Testing Lab

The 3m Semi-anechoic chamber has been registered and fully described in a report with the (FCC) Federal Communications Commission. The acceptance letter from the FCC is maintained in our files.

- IC - Registration No.: 10668A-1

The 3m Semi-anechoic chamber of Shenzhen TCT Testing Technology Co., Ltd. has been registered by Certification and Engineering Bureau of Industry Canada for radio equipment testing

5.2. Location

Shenzhen Tongce Testing Lab

Address: 1B/F., Building 1, Yibaolai Industrial Park, Qiaotou, Fuyong, Baoan District, Shenzhen, Guangdong, China

TEL: +86-755-27673339

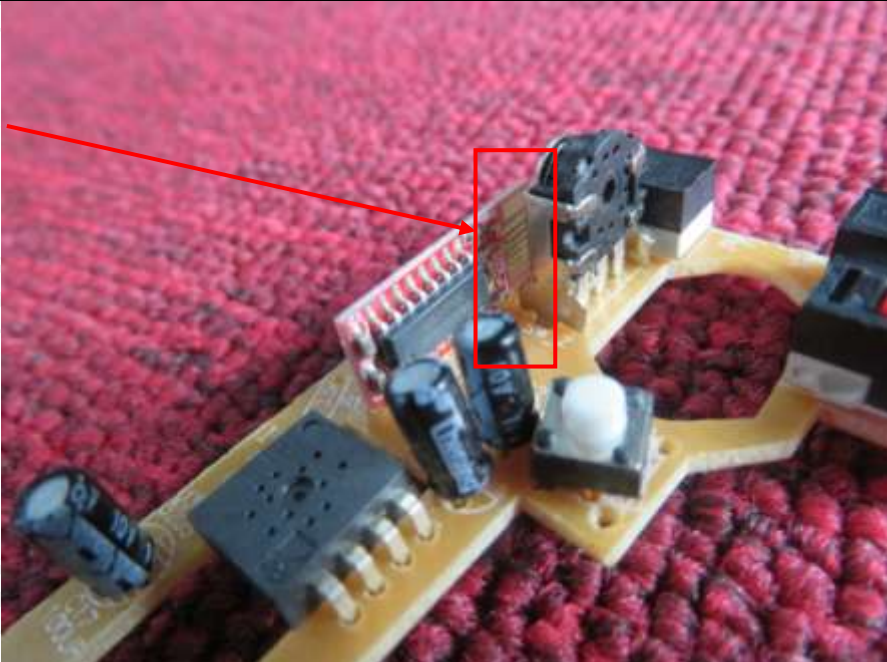
5.3. Measurement Uncertainty

The reported uncertainty of measurement $y \pm U$, where expanded uncertainty U is based on a standard uncertainty multiplied by a coverage factor of $k=2$, providing a level of confidence of approximately 95 %.

No.	Item	MU
1	Conducted Emission	$\pm 2.56\text{dB}$
2	RF power, conducted	$\pm 0.12\text{dB}$
3	Spurious emissions, conducted	$\pm 0.11\text{dB}$
4	All emissions, radiated(<1GHz)	$\pm 3.92\text{dB}$
5	All emissions, radiated(>1GHz)	$\pm 4.28\text{dB}$
6	Temperature	$\pm 0.1^{\circ}\text{C}$
7	Humidity	$\pm 1.0\%$

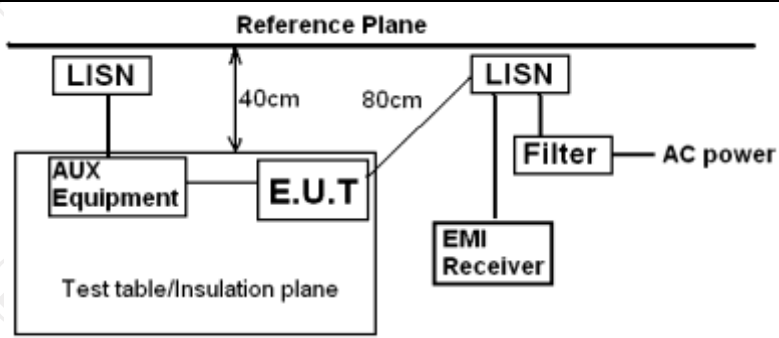
6. Test Results and Measurement Data

6.1. Antenna Requirement

Standard requirement:	FCC Part15 C Section 15.203
<p>15.203 requirement: An intentional radiator shall be designed to ensure that no antenna other than that furnished by the responsible party shall be used with the device. The use of a permanently attached antenna or of an antenna that uses a unique coupling to the intentional radiator, the manufacturer may design the unit so that a broken antenna can be replaced by the user, but the use of a standard antenna jack or electrical connector is prohibited.</p>	
E.U.T Antenna:	
<p>The EUT antenna is an integral antenna which permanently attached, and the best case gain of the antenna is -0.61dBi.</p>	
	

6.2. Conducted Emission

6.2.1. Test Specification

Test Requirement:	FCC Part15 C Section 15.207														
Test Method:	ANSI C63.10:2013														
Frequency Range:	150 kHz to 30 MHz														
Receiver setup:	RBW=9 kHz, VBW=30 kHz, Sweep time=auto														
Limits:	<table><tr><th rowspan="2">Frequency range (MHz)</th><th colspan="2">Limit (dBuV)</th></tr><tr><th>Quasi-peak</th><th>Average</th></tr><tr><td>0.15-0.5</td><td>66 to 56*</td><td>56 to 46*</td></tr><tr><td>0.5-5</td><td>56</td><td>46</td></tr><tr><td>5-30</td><td>60</td><td>50</td></tr></table>	Frequency range (MHz)	Limit (dBuV)		Quasi-peak	Average	0.15-0.5	66 to 56*	56 to 46*	0.5-5	56	46	5-30	60	50
Frequency range (MHz)	Limit (dBuV)														
	Quasi-peak	Average													
0.15-0.5	66 to 56*	56 to 46*													
0.5-5	56	46													
5-30	60	50													
Test Setup:	<div><p>Reference Plane</p><p>Remark: E.U.T: Equipment Under Test LISN: Line Impedance Stabilization Network Test table height=0.8m</p></div>														
Test Mode:	Transmitting mode with modulation														
Test Procedure:	<div><div>1. The E.U.T and simulators are connected to the main power through a line impedance stabilization network (L.I.S.N.). This provides a 50ohm/50uH coupling impedance for the measuring equipment.</div><div>2. The peripheral devices are also connected to the main power through a LISN that provides a 50ohm/50uH coupling impedance with 50ohm termination. (Please refer to the block diagram of the test setup and photographs).</div><div>3. Both sides of A.C. line are checked for maximum conducted interference. In order to find the maximum emission, the relative positions of equipment and all of the interface cables must be changed according to ANSI C63.10:2013 on conducted measurement.</div></div>														
Test Result:	N/A, Power supply is DC 1.5V from AA 1.5V Battery, so not applicable.														

6.3. Radiated Emission Measurement

6.3.1. Test Specification

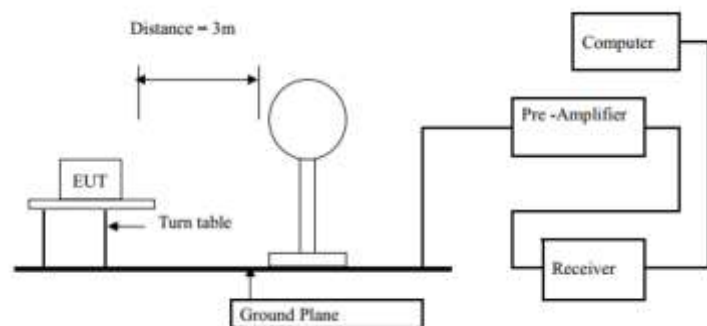
Test Requirement:	FCC Part15 C Section 15.209/ Part 2 J Section 2.1053				
Test Method:	ANSI C63.10:2013				
Frequency Range:	9 kHz to 25 GHz				
Measurement Distance:	3 m				
Antenna Polarization:	Horizontal & Vertical				
Receiver Setup:	Frequency	Detector	RBW	VBW	Remark
	9kHz- 150kHz	Quasi-peak	200Hz	1kHz	Quasi-peak Value
	150kHz- 30MHz	Quasi-peak	9kHz	30kHz	Quasi-peak Value
	30MHz-1GHz	Quasi-peak	120kHz	300kHz	Quasi-peak Value
	Above 1GHz	Peak	1MHz	3MHz	Peak Value
Limit(Field strength of the fundamental signal):					
	Frequency		Limit (dBuV/m @3m)		Remark
	2400MHz-2483.5MHz		94.00		Average Value
Limit(Spurious Emissions):			114.00		Peak Value
	Frequency		Limit (dBuV/m @3m)		Remark
	0.009-0.490		2400/F(KHz)		Quasi-peak Value
	0.490-1.705		24000/F(KHz)		Quasi-peak Value
	1.705-30		30		Quasi-peak Value
	30MHz-88MHz		40.0		Quasi-peak Value
	88MHz-216MHz		43.5		Quasi-peak Value
	216MHz-960MHz		46.0		Quasi-peak Value
	960MHz-1GHz		54.0		Quasi-peak Value
	Above 1GHz		54.0		Average Value
Limit (band edge) :			74.0		Peak Value
	Emissions radiated outside of the specified frequency bands, except for harmonics, shall be attenuated by at least 50 dB below the level of the fundamental or to the general radiated emission limits in Section 15.209, whichever is the lesser attenuation.				
Test Procedure:	<div>1. The EUT was placed on the top of a rotating table 0.8 meters above the ground at a 3 meter chamber in below 1GHz, 1.5m above the ground in above 1GHz. The table was rotated 360 degrees to determine the position of the highest radiation.</div> <div>2. The EUT was set 3 meters away from the interference-receiving antenna, which was mounted on the top of a variable-height antenna tower.</div> <div>3. The antenna height is varied from one meter to four meters above the ground to determine the maximum value of the field strength. Both horizontal and vertical polarizations of the antenna are set to make</div>				

Test setup:

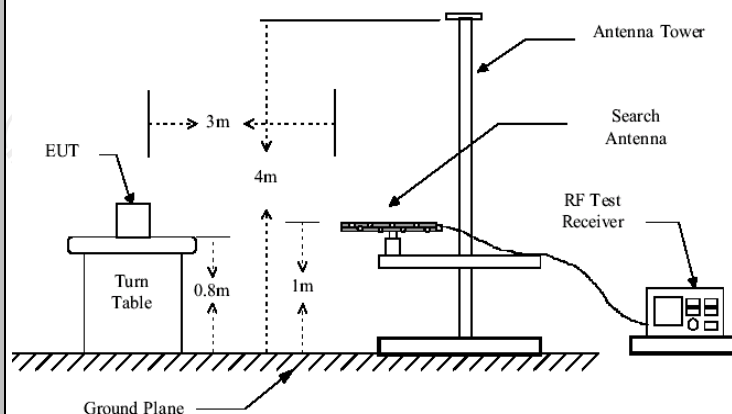
the measurement.

4. For each suspected emission, the EUT was arranged to its worst case and then the antenna was tuned to heights from 1 meter to 4 meters and the rotatable table was turned from 0 degrees to 360 degrees to find the maximum reading.
5. The test-receiver system was set to Peak Detect Function and Specified Bandwidth with Maximum Hold Mode.
6. If the emission level of the EUT in peak mode was 10dB lower than the limit specified, then testing could be stopped and the peak values of the EUT would be reported. Otherwise the emissions that did not have 10dB margin would be re-tested one by one using peak, quasi-peak or average method as specified and then reported in a data sheet.

For radiated emissions below 30MHz

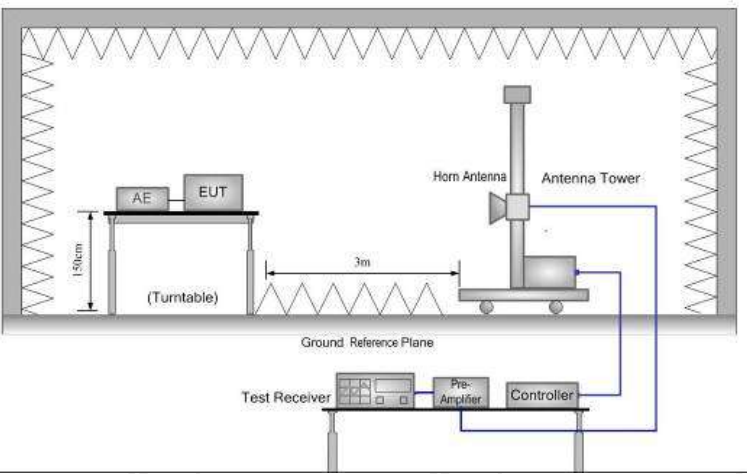


30MHz to 1GHz



Above 1GHz

(The diagram below shows the test setup that is utilized to make the measurements for emission from 1GHz to the tenth harmonic of the highest fundamental frequency or to 40GHz emissions, whichever is lower.)

	
Test results:	PASS

6.3.2. Test Instruments

Radiated Emission Test Site (966)				
Name of Equipment	Manufacturer	Model	Serial Number	Calibration Due
Test Receiver	ROHDE&SCHW ARZ	ESVD	100008	Sep. 27, 2018
Spectrum Analyzer	ROHDE&SCHW ARZ	FSQ	200061	Sep. 27, 2018
Pre-amplifier	EM Electronics Corporation CO.,LTD	EM30265	07032613	Sep. 27, 2018
Pre-amplifier	HP	8447D	2727A05017	Sep. 27, 2018
Loop antenna	ZHINAN	ZN30900A	12024	Sep. 27, 2018
Broadband Antenna	Schwarzbeck	VULB9163	340	Sep. 27, 2018
Horn Antenna	Schwarzbeck	BBHA 9120D	631	Sep. 27, 2018
Horn Antenna	Schwarzbeck	BBH 9170	582	Jun. 07, 2018
Antenna Mast	Keleto	CC-A-4M	N/A	N/A
Coax cable (9KHz-1GHz)	TCT	RE-low-01	N/A	Sep. 27, 2018
Coax cable (9KHz-40GHz)	TCT	RE-high-02	N/A	Sep. 27, 2018
Coax cable (9KHz-1GHz)	TCT	RE-low-03	N/A	Sep. 27, 2018
Coax cable (9KHz-40GHz)	TCT	RE-high-04	N/A	Sep. 27, 2018
EMI Test Software	Shurple Technology	EZ-EMC	N/A	N/A

Note: The calibration interval of the above test instruments is 12 months and the calibrations are traceable to international system unit (SI).

6.3.3. Test Data

Field Strength of Fundamental

Frequency (MHz)	Emission PK/AV (dBuV/m)	Horizontal /Vertical	Limits PK/AV (dBuV/m)	Margin (dB)
2408	87.25	H	114/94	-26.75
2408	84.05	H	114/94	-9.95
2440	87.38	H	114/94	-26.62
2440	82.88	H	114/94	-11.12
2474	86.07	H	114/94	-27.93
2474	84.40	H	114/94	-9.60
2408	87.29	V	114/94	-26.71
2408	81.20	V	114/94	-12.80
2440	85.31	V	114/94	-28.69
2440	82.71	V	114/94	-11.29
2474	87.32	V	114/94	-26.68
2474	83.39	V	114/94	-10.61

Spurious Emissions

Frequency Range (9 kHz-30MHz)

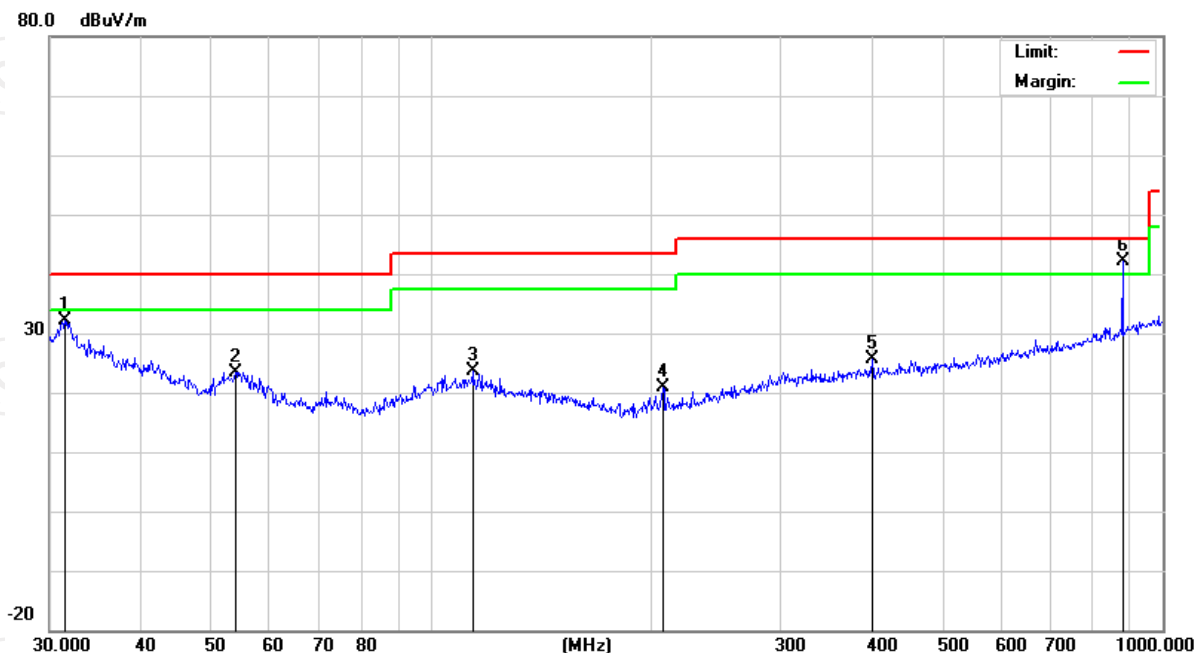
Frequency (MHz)	Level@3m (dBuV/m)	Limit@3m (dBuV/m)
--	--	--
--	--	--
--	--	--
--	--	--

Note: 1. Emission Level=Reading+ Cable loss-Antenna factor-Amp factor

2. The emission levels are 20 dB below the limit value, which are not reported. It is deemed to comply with the requirement

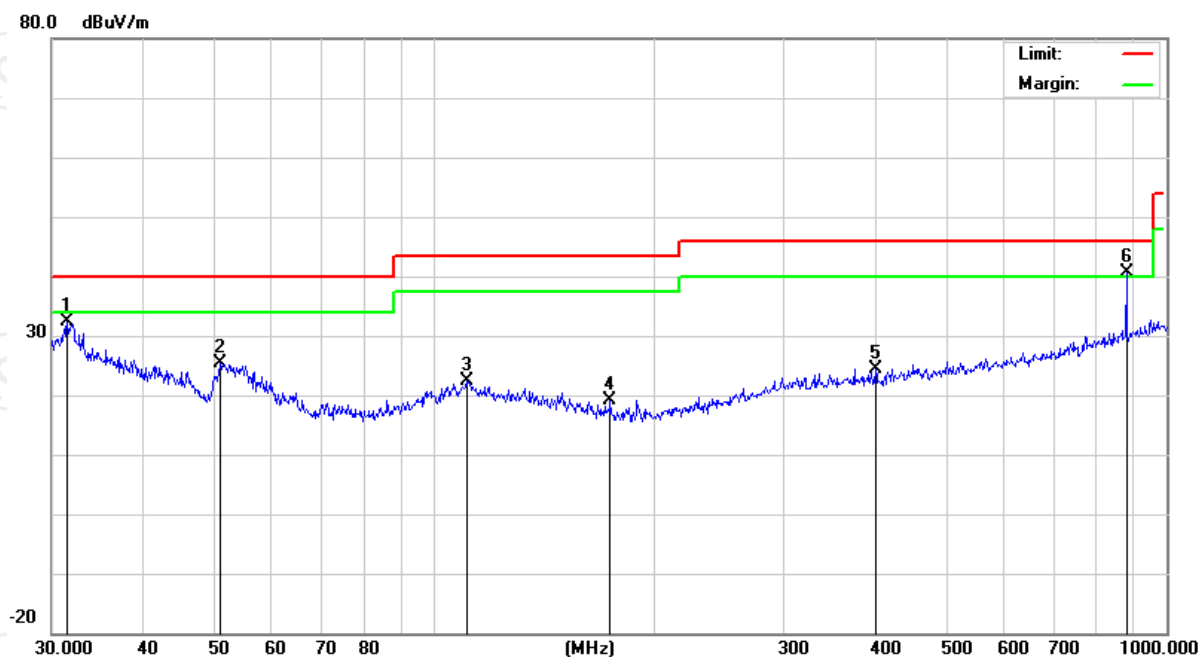
Frequency Range (30MHz-1GHz)

Horizontal:



No.	Mk.	Freq.	Reading	Correct	Measure-	Limit	Over	
		MHz	Level	Factor	ment			Detector
			dBuV	dB	dBuV/m	dBuV/m	dB	
1		31.5095	27.81	4.22	32.03	40.00	-7.97	peak
2		53.8818	28.98	-5.48	23.50	40.00	-16.50	peak
3		113.7143	25.88	-2.23	23.65	43.50	-19.85	peak
4		207.1226	27.65	-6.68	20.97	43.50	-22.53	peak
5		400.4319	27.23	-1.54	25.69	46.00	-20.31	peak
6	*	881.4067	36.69	5.32	42.01	46.00	-3.99	peak

Vertical:



No.	Mk.	Freq.	Reading	Correct	Measure-	Limit	Over	
		MHz	Level	Factor	ment			Detector
			dBuV	dB	dBuV/m	dBuV/m	dB	
1		31.5095	28.24	4.22	32.46	40.00	-7.54	peak
2		50.9420	30.46	-5.13	25.33	40.00	-14.67	peak
3		110.5687	24.28	-1.92	22.36	43.50	-21.14	peak
4		173.8135	25.71	-6.69	19.02	43.50	-24.48	peak
5		400.4319	25.39	-1.03	24.36	46.00	-21.64	peak
6	*	881.4067	35.31	5.32	40.63	46.00	-5.37	peak

Note: Measurements were conducted in all channels (high, middle, low), and the worst case (low channel) was submitted only.

Above 1GHz

Frequency (MHz)	Reading (dBuV/m)	Correct Factor dB/m	Emission Level (dBuV/m)	Limit (dBuV/m)	Margin (dB)	Polar H/V	Detector
Low Channel-2408MHz							
4816	57.84	-1.29	56.55	74	-17.45	H	PK
4816	42.57	-1.29	41.28	54	-12.72	H	AV
7224	50.81	6.51	57.32	74	-16.68	H	PK
7224	30.70	6.51	37.21	54	-16.79	H	AV
4816	56.72	-1.29	55.43	74	-18.57	V	PK
4816	39.37	-1.29	38.08	54	-15.92	V	AV
7224	47.08	6.51	53.59	74	-20.41	V	PK
7224	30.83	6.51	37.34	54	-16.66	V	AV
Middle Channel-2440MHz							
4880	60.03	-0.98	59.05	74	-14.95	H	PK
4880	44.98	-0.98	44.00	54	-10.00	H	AV
7320	45.36	6.83	52.19	74	-21.81	H	PK
7320	31.33	6.83	38.16	54	-15.84	H	AV
4880	55.19	-0.98	54.21	74	-19.79	V	PK
4880	44.91	-0.98	43.93	54	-10.07	V	AV
7320	46.58	6.83	53.41	74	-20.59	V	PK
7320	31.59	6.83	38.42	54	-15.58	V	AV
High Channel-2474MHz							
4948	55.08	-0.8	54.28	74	-19.72	H	PK
4948	44.65	-0.8	43.85	54	-10.15	H	AV
7422	42.81	6.94	49.75	74	-24.25	H	PK
7422	32.91	6.94	39.85	54	-14.15	H	AV
4948	56.30	-0.8	55.50	74	-18.50	V	PK
4948	41.53	-0.8	40.73	54	-13.27	V	AV
7422	46.77	6.94	53.71	74	-20.29	V	PK
7422	31.38	6.94	38.32	54	-15.68	V	AV

Note:

1. Emission Level=Peak Reading + Correction Factor; Correction Factor= Antenna Factor + Cable loss – Pre-amplifier
2. Margin (dB) = Emission Level (Peak) (dBuV/m)-Average limit (dBuV/m)
3. The emission levels of other frequencies are very lower than the limit and not show in test report.
4. Measurements were conducted from 1 GHz to the 10th harmonic of highest fundamental frequency.
5. Data of measurement shown "---" in the above table mean that the reading of emissions is attenuated more than 20 dB below the limits or the field strength is too small to be measured.

Band Edge Requirement

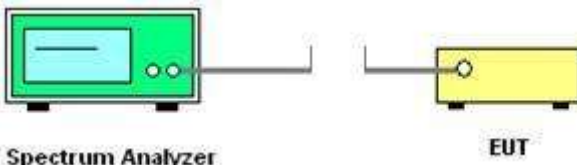
Frequency	Reading	Correct Factor	Emission Level	Limit	Margin	Polar	Detector
(MHz)	(dBuV/m)	dB/m	(dBuV/m)	(dBuV/m)	(dB)	H/V	
Low Channel-2408MHz							
2390	68.33	-8.73	59.60	74	-14.40	H	PK
2390	47.23	-8.73	38.50	54	-15.50	H	AV
2390	65.13	-8.73	56.40	74	-17.60	V	PK
2390	50.37	-8.73	41.64	54	-12.36	V	AV
High Channel-2474MHz							
2483.5	66.96	-8.17	58.79	74	-15.21	H	PK
2483.5	49.56	-8.17	41.39	54	-12.61	H	AV
2483.5	66.06	-8.17	57.89	74	-16.11	V	PK
2483.5	48.51	-8.17	40.34	54	-13.66	V	AV

Note:

1. Emission Level=Peak Reading + Correction Factor; Correction Factor= Antenna Factor + Cable loss – Pre-amplifier
2. Margin (dB) = Emission Level (Peak/Average)(dBuV/m)-(Peak/Average) limit (dBuV/m)
3. The emission levels of other frequencies are very lower than the limit and not show in test report.
4. Measurements were conducted from 1 GHz to the 10th harmonic of highest fundamental frequency.
5. Data of measurement shown "---"in the above table mean that the reading of emissions is attenuated more than 20 dB below the limits or the field strength is too small to be measured.

6.4.20dB Occupied Bandwidth

6.4.1. Test Specification

Test Requirement:	FCC Part15 C Section 15.215(c)/ Part 2 J Section 2.1049
Test Method:	ANSI C63.10: 2013
Limit:	N/A
	<ol style="list-style-type: none"> 1. According to the follow Test-setup, keep the relative position between the artificial antenna and the EUT. 2. Set to the maximum power setting and enable the EUT transmit continuously. 3. Use the following spectrum analyzer settings for 20dB Bandwidth measurement. Span = approximately 2 to 3 times the 20 dB bandwidth, centered on a hopping channel; RBW\geq1% of the 20 dB bandwidth; VBW\geqRBW; Sweep = auto; Detector function = peak; Trace = max hold. 4. Measure and record the results in the test report.
Test setup:	 <p>The diagram illustrates the test setup. On the left is a green Spectrum Analyzer with a screen and two knobs. A cable connects it to a yellow rectangular box on the right labeled 'EUT'.</p>
Test Mode:	Transmitting mode with modulation
Test results:	PASS

6.4.2. Test Instruments

RF Test Room				
Equipment	Manufacturer	Model	Serial Number	Calibration Due
Spectrum Analyzer	R&S	FSU	200054	Oct. 13, 2018

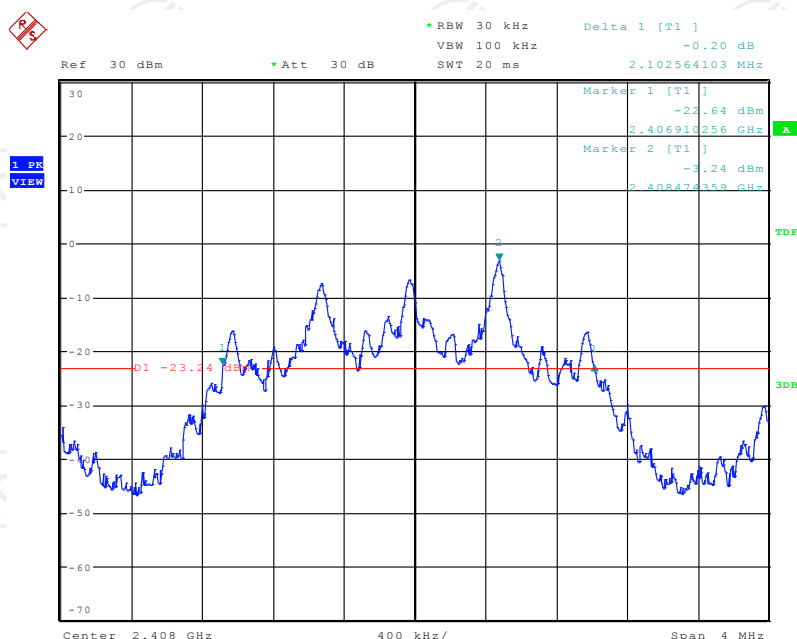
Note: The calibration interval of the above test instruments is 12 months and the calibrations are traceable to international system unit (SI).

6.4.3. Test data

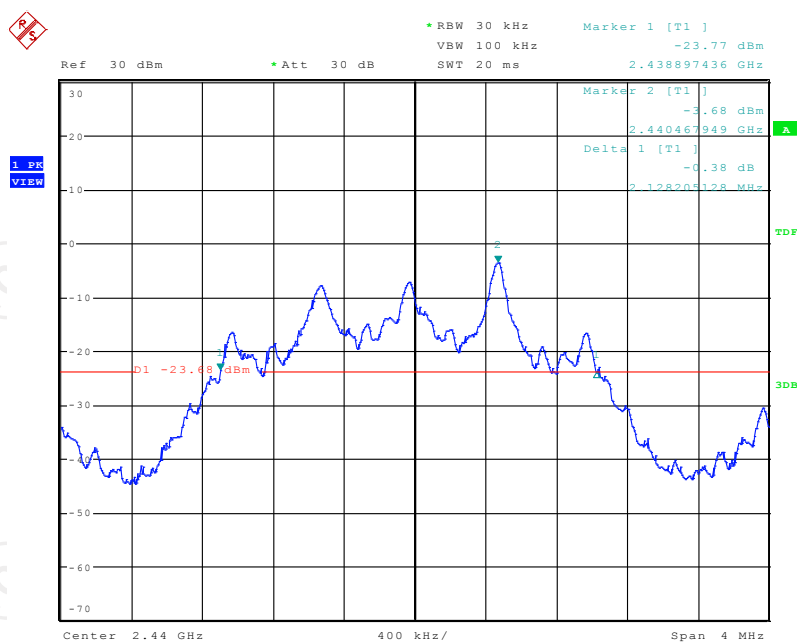
Test Channel	20dB Occupy Bandwidth (kHz)	Limit	Conclusion
Lowest	2102.56	---	PASS
Middle	2128.21	---	PASS
Highest	2121.79	---	PASS

Test plots as follows:

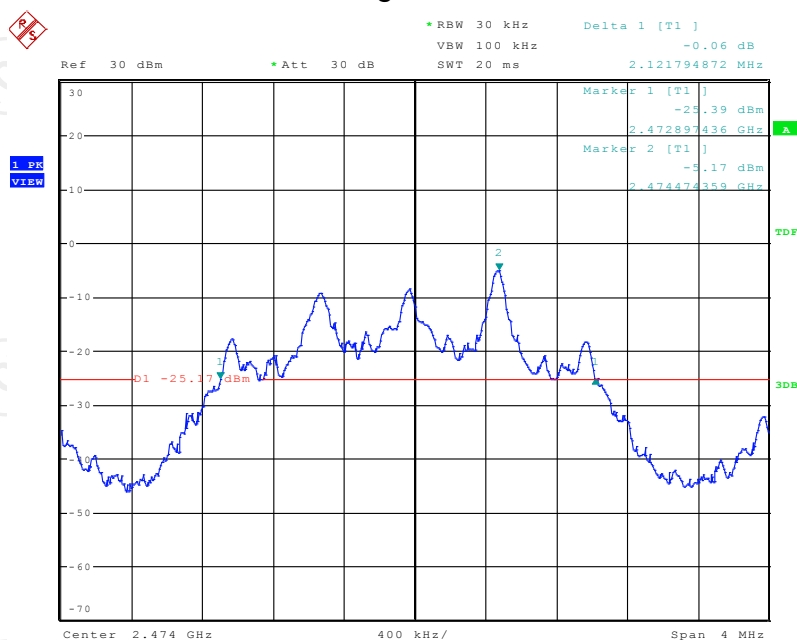
Lowest channel



Middle channel



Highest channel

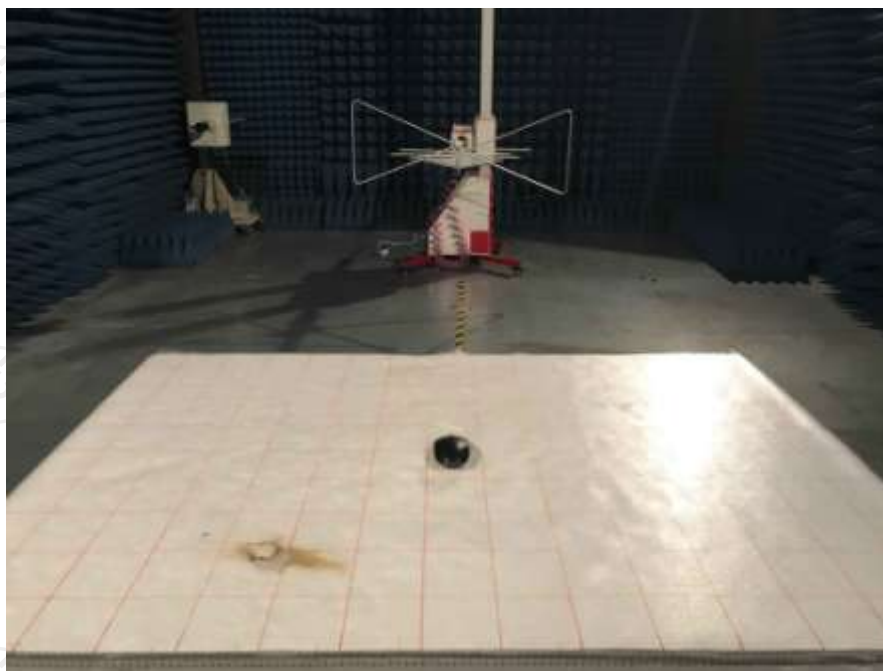


Appendix A: Photographs of Test Setup

Product: 2.4G WIRELESS MOUSE

Model: RM-8801

Radiated Emission



Appendix B: Photographs of EUT
Product: 2.4G WIRELESS MOUSE
Model: RM-8801
External Photos

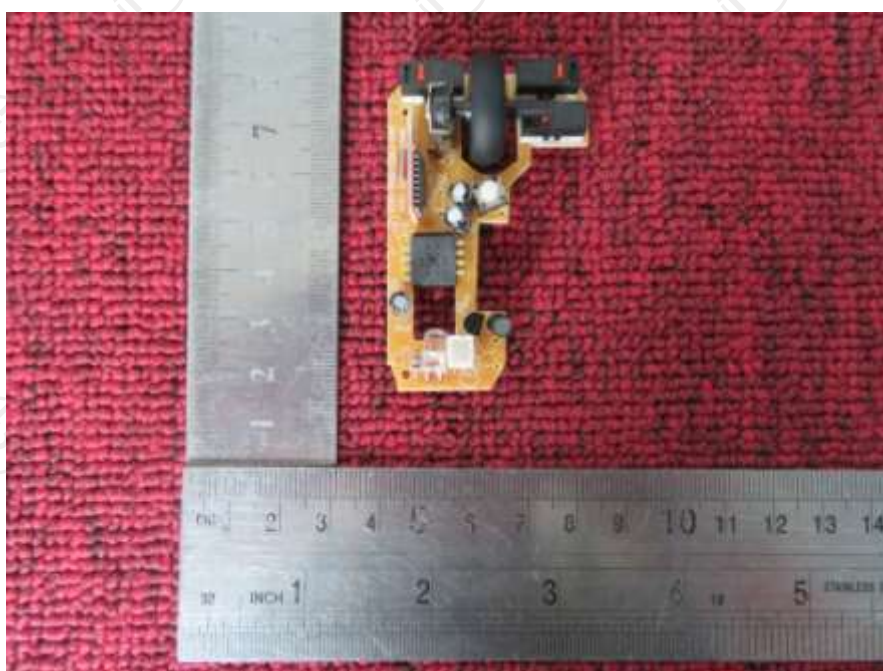


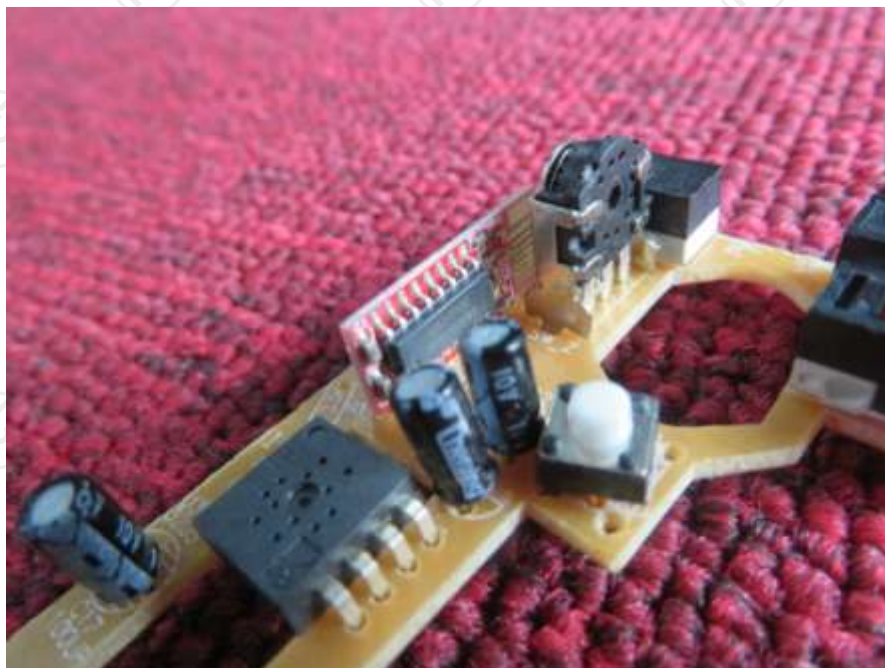




Appendix B: Photographs of EUT
Product: 2.4G WIRELESS MOUSE
Model: RM-8801
Internal Photos







*******END OF REPORT*******